



BEARING UNITS

Pillow Blocks

Standard Duty

- 2 bolt
- Set screw type
- Other types and sizes (units / inserts) available upon request



| Order No. | Mfg. No. | Shaft Size (in) |
|------------|-----------|-----------------|
| 3019.00001 | UCP202-10 | 5/8 |
| 3019.00004 | UCP204-12 | 3/4 |
| 3019.00007 | UCP205-14 | 7/8 |
| 3019.00010 | UCP205-15 | 15/16 |
| 3019.00013 | UCP205-16 | 1 |
| 3019.00016 | UCP206-18 | 1-1/8 |
| 3019.00019 | UCP206-19 | 1-3/16 |
| 3019.00022 | UCP206-20 | 1-1/4 |
| 3019.00025 | UCP207-20 | 1-1/4 |
| 3019.00028 | UCP207-22 | 1-3/8 |
| 3019.00031 | UCP207-23 | 1-7/16 |
| 3019.00034 | UCP208-24 | 1-1/2 |
| 3019.00037 | UCP209-26 | 1-5/8 |
| 3019.00040 | UCP209-27 | 1-11/16 |
| 3019.00043 | UCP209-28 | 1-3/4 |
| 3019.00047 | UCP210-30 | 1-7/8 |
| 3019.00050 | UCP210-31 | 1-15/16 |
| 3019.00053 | UCP210-32 | 2 |
| 3019.00056 | UCP211-32 | 2 |
| 3019.00059 | UCP211-35 | 2-3/16 |
| 3019.00062 | UCP212-38 | 2-3/8 |
| 3019.00065 | UCP212-39 | 2-7/16 |
| 3019.00068 | UCP213-40 | 2-1/2 |
| 3019.00071 | UCP215-47 | 2-15/16 |
| 3019.00074 | UCP215-48 | 3 |

Bearing Inserts

- Other types and sizes (units/inserts) available upon request



| Order No. | Mfg. No. | Shaft Size (in) |
|------------|-----------|-----------------|
| 3029.00001 | SA202-10 | 5/8 |
| 3029.00004 | SA204-12 | 3/4 |
| 3029.00007 | SA205-16G | 1 |
| 3029.00010 | SA206-18G | 1-1/8 |
| 3029.00013 | SA206-20G | 1-1/4 |
| 3029.00016 | SA207-20G | 1-1/4 |
| 3029.00019 | SB202-10 | 5/8 |
| 3029.00022 | SB205-16 | 1 |

Flanged Units

Standard Duty

- Set screw type
- Other types and sizes (units/inserts) available upon request



2 Bolt Flange



4 Bolt Flange

| Order No. | Mfg. No. | Shaft Size (in) | Flange T type |
|------------|------------|-----------------|---------------|
| 3019.00100 | UCF202-10 | 5/8 | 4 bolt |
| 3019.00103 | UCFL202-10 | 5/8 | 2 bolt |
| 3019.00106 | UCF204-12 | 3/4 | 4 bolt |
| 3019.00109 | UCFL204-12 | 3/4 | 2 bolt |
| 3019.00112 | UCF205-14 | 7/8 | 4 bolt |
| 3019.00115 | UCFL205-14 | 7/8 | 2 bolt |
| 3019.00118 | UCF205-15 | 15/16 | 4 bolt |
| 3019.00121 | UCFL205-15 | 15/16 | 2 bolt |
| 3019.00124 | UCF205-16 | 1 | 4 bolt |
| 3019.00127 | UCFL205-16 | 1 | 2 bolt |
| 3019.00130 | UCF206-18 | 1-1/8 | 4 bolt |
| 3019.00133 | UCFL206-18 | 1-1/8 | 2 bolt |
| 3019.00136 | UCF206-19 | 1-3/16 | 4 bolt |
| 3019.00139 | UCFL206-19 | 1-3/16 | 2 bolt |
| 3019.00142 | UCF206-20 | 1-1/4 | 4 bolt |
| 3019.00145 | UCFL206-20 | 1-1/4 | 2 bolt |
| 3019.00148 | UCF207-20 | 1-1/4 | 4 bolt |
| 3019.00151 | UCFL207-20 | 1-1/4 | 2 bolt |
| 3019.00154 | UCF207-22 | 1-3/8 | 4 bolt |
| 3019.00157 | UCFL207-22 | 1-3/8 | 2 bolt |
| 3019.00160 | UCF207-23 | 1-7/16 | 4 bolt |
| 3019.00163 | UCFL207-23 | 1-7/16 | 2 bolt |
| 3019.00166 | UCF208-24 | 1-1/2 | 4 bolt |
| 3019.00169 | UCFL208-24 | 1-1/2 | 2 bolt |
| 3019.00172 | UCF209-26 | 1-5/8 | 4 bolt |
| 3019.00175 | UCFL209-26 | 1-5/8 | 2 bolt |
| 3019.00178 | UCF209-27 | 1-11/16 | 4 bolt |
| 3019.00181 | UCFL209-27 | 1-11/16 | 2 bolt |
| 3019.00184 | UCF209-28 | 1-3/4 | 4 bolt |
| 3019.00187 | UCFL209-28 | 1-3/4 | 2 bolt |
| 3019.00190 | UCF210-30 | 1-7/8 | 4 bolt |
| 3019.00193 | UCFL210-30 | 1-7/8 | 2 bolt |
| 3019.00196 | UCF210-31 | 1-15/16 | 4 bolt |
| 3019.00199 | UCFL210-31 | 1-15/16 | 2 bolt |
| 3019.00202 | UCF210-32 | 2 | 4 bolt |
| 3019.00205 | UCFL210-32 | 2 | 2 bolt |
| 3019.00208 | UCF211-32 | 2 | 4 bolt |
| 3019.00211 | UCFL211-32 | 2 | 2 bolt |
| 3019.00214 | UCF211-35 | 2-3/16 | 4 bolt |
| 3019.00217 | UCFL211-35 | 2-3/16 | 2 bolt |
| 3019.00220 | UCF212-39 | 2-7/16 | 4 bolt |
| 3019.00223 | UCF213-40 | 2-1/2 | 4 bolt |
| 3019.00226 | UCF215-47 | 2-15/16 | 4 bolt |
| 3019.00229 | UCF215-48 | 3 | 4 bolt |



TUTHILL
CORPORATION

**National Rod End
Division**

MBF SERIES

4-Piece, Bronze Race, Oil Impregnated

Ball

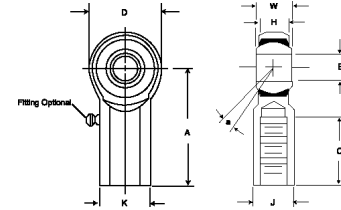
- 52100 steel
- Rc 56 minimum
- Hard chrome-plated

Body

- Low carbon steel
- Zinc plated
- Clear chromate treated

Race

- Sintered
- Phosphor bronze
- Oil Impregnated



Dimensions in inches

| Order No. | Right Hand Mfg. No. | Order No. | Left Hand Mfg. No. | B Ball Bore | W Ball Width | H Housing Width | A C-line Length | D Head Dia. | K Shank Dia. | J Wrench Flat | Ref. Ball Dia. | C Thread Length | UNF-3A Thread Size | a° Misalign Angle |
|------------|---------------------|------------|--------------------|-------------|--------------|-----------------|-----------------|-------------|--------------|---------------|----------------|-----------------|--------------------|-------------------|
| 3019.00232 | MBF3 | 3019.00258 | MBFL3 | .1900 | .312 | .250 | 1.062 | .625 | .406 | .313 | .437 | .500 | 10-32 | 13 |
| 3019.00235 | MBF4 | 3019.00261 | MBFL4 | .2500 | .375 | .281 | 1.312 | .750 | .469 | .375 | .500 | .687 | 1/4-28 | 16 |
| 3019.00238 | MBF5 | 3019.00264 | MBFL5 | .3125 | .437 | .344 | 1.375 | .985 | .500 | .437 | .625 | .687 | 5/16-24 | 14 |
| 3019.00241 | MBF6 | 3019.00267 | MBFL6 | .3750 | .500 | .406 | 1.625 | 1.000 | .687 | .562 | .719 | .812 | 3/8-24 | 12 |
| 3019.00244 | MBF7 | 3019.00270 | MBFL7 | .4375 | .562 | .437 | 1.812 | 1.125 | .750 | .625 | .812 | .937 | 7/16-20 | 14 |
| 3019.00247 | MBF8 | 3019.00273 | MBFL8 | .5000 | .625 | .500 | 2.125 | 1.312 | .875 | .750 | .937 | 1.062 | 1/2-20 | 12 |
| 3019.00250 | MBF10 | 3019.00276 | MBFL10 | .6250 | .750 | .562 | 2.500 | 1.500 | 1.000 | .875 | 1.125 | 1.375 | 5/8-18 | 16 |
| 3019.00253 | MBF12 | 3019.00279 | MBFL12 | .7500 | .875 | .687 | 2.875 | 1.750 | 1.125 | 1.000 | 1.312 | 1.562 | 3/4-16 | 14 |

MBM SERIES

4-Piece, Bronze Race, Oil Impregnated

Ball

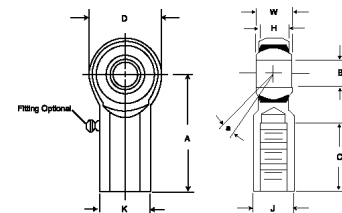
- 52100 steel
- Rc 56 minimum
- Hard chrome-plated

Body

- Low carbon steel
- Zinc plated
- Clear chromate treated

Race

- Sintered
- Phosphor bronze
- Oil Impregnated



Dimensions in inches

| Order No. | Right Hand Mfg. No. | Order No. | Left Hand Mfg. No. | B Ball Bore | W Ball Width | H Housing Width | A C-line Length | D Head Dia. | Ref. Ball Length | C Thread Length | UNF-3A Thread Size | a° Misalign Angle |
|------------|---------------------|------------|--------------------|-------------|--------------|-----------------|-----------------|-------------|------------------|-----------------|--------------------|-------------------|
| 3019.00282 | MBM4 | 3019.00303 | MBML4 | .2500 | .375 | .281 | 1.312 | .750 | .500 | 1.000 | 1/4-28 | 16 |
| 3019.00285 | MBM5 | 3019.00306 | MBML5 | .3125 | .437 | .344 | 1.375 | .985 | .625 | 1.250 | 5/16-24 | 14 |
| 3019.00288 | MBM6 | 3019.00309 | MBML6 | .3750 | .500 | .406 | 1.625 | 1.000 | .719 | 1.250 | 3/8-24 | 12 |
| 3019.00291 | MBM7 | 3019.00312 | MBML7 | .4375 | .562 | .437 | 1.812 | 1.125 | .812 | 1.375 | 7/16-20 | 14 |
| 3019.00294 | MBM8 | 3019.00315 | MBML8 | .5000 | .625 | .500 | 2.125 | 1.312 | .937 | 1.500 | 1/2-20 | 12 |
| 3019.00297 | MBM10 | 3019.00318 | MBML10 | .6250 | .750 | .562 | 2.500 | 1.500 | 1.125 | 1.625 | 5/8-18 | 16 |
| 3019.00300 | MBM12 | 3019.00321 | MBML12 | .7500 | .875 | .687 | 2.875 | 1.750 | 1.312 | 1.750 | 3/4-16 | 14 |



**National Rod End
Division**

MSF SERIES

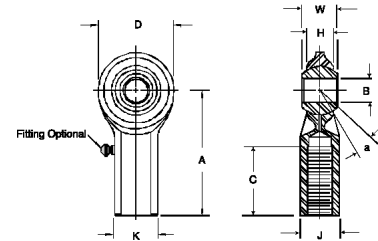
2-Piece, Metal to Metal

Ball

- 52100 steel
- Rc 56 minimum
- Hard chrome-plated

Body

- Low carbon steel
- Zinc plated
- Clear chromate treated



Dimensions in inches

| Order No. | Right Hand Mfg. No. | Order No. | Left Hand Mfg. No. | B Ball Bore | W Ball Width | H Housing Width | A C-line Length | D Head Dia. | K Shank Dia. | J Wrench Flat | Ref. Ball Dia. | C Thread Length | UNF-3A Thread Size | a° Misalign Angle |
|------------|---------------------|------------|--------------------|-------------|--------------|-----------------|-----------------|-------------|--------------|---------------|----------------|-----------------|--------------------|-------------------|
| 3019.00324 | MSF3* | 3019.00348 | MSFL3* | .1900 | .312 | .234 | 1.062 | .625 | .406 | .312 | .437 | .500 | 10-32 | 17 |
| 3019.00327 | MSF4 | 3019.00351 | MSFL4 | .2500 | .375 | .250 | 1.312 | .750 | .469 | .375 | .500 | .687 | 1/4-28 | 21 |
| 3019.00330 | MSF5 | 3019.00354 | MSFL5 | .3125 | .437 | .312 | 1.375 | .985 | .500 | .437 | .625 | .687 | 5/16-24 | 17 |
| 3019.00333 | MSF6 | 3019.00357 | MSFL6 | .3750 | .500 | .359 | 1.625 | 1.000 | .687 | .562 | .719 | .812 | 3/8-24 | 19 |
| 3019.00336 | MSF7 | 3019.00360 | MSFL7 | .4375 | .562 | .406 | 1.812 | 1.125 | .750 | .625 | .812 | .937 | 7/16-20 | 18 |
| 3019.00339 | MSF8 | 3019.00363 | MSFL8 | .5000 | .625 | .453 | 2.125 | 1.312 | .875 | .750 | .937 | 1.062 | 1/2-20 | 17 |
| 3019.00342 | MSF10 | 3019.00366 | MSFL10 | .6250 | .750 | .484 | 2.500 | 1.500 | 1.000 | .875 | 1.125 | 1.375 | 5/8-18 | 22 |
| 3019.00345 | MSF12 | 3019.00369 | MSFL12 | .7500 | .875 | .593 | 2.875 | 1.750 | 1.125 | 1.000 | 1.312 | 1.562 | 3/4-16 | 18 |

*Lubrication fittings are not supplied on these units.

MSM SERIES

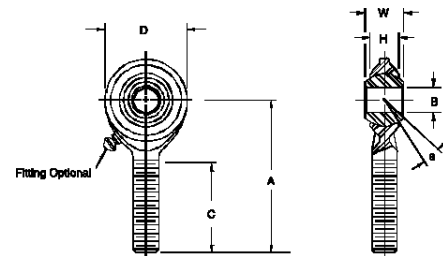
2-Piece, Metal to Metal

Ball

- 52100 steel
- Rc 56 minimum
- Hard chrome-plated

Body

- Low carbon steel
- Zinc plated
- Clear chromate treated



Dimensions in inches

| Order No. | Right Hand Mfg. No. | Order No. | Left Hand Mfg. No. | B Ball Bore | W Ball Width | H Housing Width | A C-line Length | D Head Dia. | Ref. Ball Dia. | C Thread Length | UNF-3A Thread Size | a° Misalign Angle |
|------------|---------------------|------------|--------------------|-------------|--------------|-----------------|-----------------|-------------|----------------|-----------------|--------------------|-------------------|
| 3019.00372 | MSM3* | 3019.00396 | MSML3* | .1900 | .312 | .234 | 1.250 | .625 | .437 | .750 | 10-32 | 17 |
| 3019.00375 | MSM4* | 3019.00399 | MSML4* | .2500 | .375 | .250 | 1.562 | .750 | .500 | 1.000 | 1/4-28 | 21 |
| 3019.00378 | MSM5* | 3019.00402 | MSML5* | .3125 | .437 | .312 | 1.875 | .985 | .625 | 1.250 | 5/16-24 | 17 |
| 3019.00381 | MSM6 | 3019.00405 | MSML6 | .3750 | .500 | .359 | 1.938 | 1.000 | .719 | 1.250 | 3/8-24 | 19 |
| 3019.00384 | MSM7 | 3019.00408 | MSML7 | .4375 | .562 | .406 | 2.125 | 1.125 | .812 | 1.375 | 7/16-20 | 18 |
| 3019.00387 | MSM8 | 3019.00411 | MSML8 | .5000 | .625 | .453 | 2.438 | 1.312 | .937 | 1.500 | 1/2-20 | 17 |
| 3019.00390 | MSM10 | 3019.00414 | MSML10 | .6250 | .750 | .484 | 2.625 | 1.500 | 1.125 | 1.625 | 5/8-18 | 22 |
| 3019.00393 | MSM12 | 3019.00417 | MSML12 | .7500 | .875 | .593 | 2.875 | 1.750 | 1.312 | 1.750 | 3/4-16 | 18 |

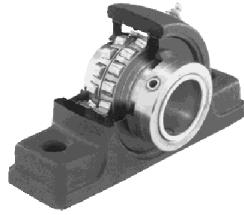
*Lubrication fittings are not supplied on these units.

30

Jones

JA-2000 Pillow Blocks

- 2-bolt
- Fully self-aligning
- Fixed and expansion units



| Order No. | Mfg. No. | Shaft Dia. | Weight (lb) | Overall Length (in) | Overall Height (in) |
|------------|----------|------------|-------------|---------------------|---------------------|
| 3019.00420 | JA2107 | 1-7/16 | 17.6 | 16-7/8 | 3-7/8 |
| 3019.00423 | JA2108 | 1-1/2 | 17.4 | 16-7/8 | 3-7/8 |
| 3019.00426 | JA2211 | 1-11/16 | 10.4 | 17-3/8 | 4-1/4 |
| 3019.00429 | JA2212 | 1-3/4 | 10.0 | 17-3/8 | 4-1/4 |
| 3019.00432 | JA2215 | 1-15/16 | 11.8 | 18-3/8 | 4-5/8 |
| 3019.00435 | JA2300 | 2 | 11.6 | 18-3/8 | 4-5/8 |
| 3019.00438 | JA2203 | 2-3/16 | 15 | 18-7/8 | 5 |
| 3019.00441 | JA2207 | 2-7/16 | 20.5 | 19-1/4 | 5-11/16 |
| 3019.00444 | JA2208 | 2-1/2 | 20 | 19-1/4 | 5-11/16 |
| 3019.00448 | JA2211 | 2-11/16 | 29.8 | 10-1/2 | 6-7/16 |
| 3019.00451 | JA2212 | 2-3/4 | 29 | 10-1/2 | 6-7/16 |
| 3019.00454 | JA2215 | 2-15/16 | 28.2 | 10-1/2 | 6-7/16 |
| 3019.00457 | JA2300 | 3 | 27.4 | 10-1/2 | 6-7/16 |
| 3019.00460 | JA2307 | 3-7/16 | 46.5 | 13 | 7-1/2 |
| 3019.00463 | JA2308 | 3-1/2 | 45.9 | 13 | 7-1/2 |
| 3019.00466 | JA2311 | 3-11/16 | 70.7 | 14-1/4 | 8-7/16 |
| 3019.00469 | JA2315 | 3-15/16 | 70.1 | 14-1/4 | 8-7/16 |
| 3019.00472 | JA2400 | 4 | 69.5 | 14-1/4 | 8-7/16 |

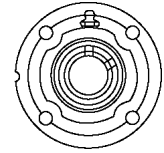
JE-2000 Pillow Blocks

- Fully self-aligning
- Fixed and expansion units
- Heavy-duty
- Also available in 4 bolt in sizes above 2-7/16"

| Order No. | Mfg. No. | Shaft Dia. | Weight (lb) | Overall Length (in) | Overall Height (in) |
|------------|----------|------------|-------------|---------------------|---------------------|
| 3019.00475 | JE2107 | 1-7/16 | 18.0 | 17-3/8 | 13-7/8 |
| 3019.00478 | JE2108 | 1-1/2 | 18.0 | 17-3/8 | 14-1/4 |
| 3019.00481 | JE2111 | 1-11/16 | 19.3 | 17-7/8 | 14-1/4 |
| 3019.00484 | JE2112 | 1-3/4 | 19.3 | 17-7/8 | 14-1/2 |
| 3019.00487 | JE2115 | 1-15/16 | 10.5 | 18-7/8 | 14-1/2 |
| 3019.00490 | JE2200 | 2 | 10.5 | 18-7/8 | 14-1/2 |
| 3019.00493 | JE2203 | 2-3/16 | 13.5 | 19-5/8 | 15 |
| 3019.00496 | JE2207 | 2-7/16 | 18.5 | 10-1/2 | 15 |
| 3019.00499 | JE2208 | 2-1/2 | 18.5 | 10-1/2 | 15-11/16 |
| 3019.00502 | JE2211 | 2-11/16 | 26.5 | 12 | 16-5/16 |
| 3019.00505 | JE2212 | 2-3/4 | 25.5 | 12 | 16-5/16 |
| 3019.00508 | JE2215 | 2-15/16 | 22.5 | 12 | 16-5/16 |
| 3019.00511 | JE2300 | 3 | 22.5 | 12 | 16-5/16 |
| 3019.00514 | JE2307 | 3-7/16 | 35.5 | 14 | 17-1/2 |
| 3019.00517 | JE2308 | 3-1/2 | 35.5 | 14 | 17-1/2 |
| 3019.00520 | JE2311 | 3-11/16 | 50.5 | 15-1/4 | 18-9/16 |
| 3019.00523 | JE2315 | 3-15/16 | 50.5 | 15-1/4 | 18-9/16 |
| 3019.00526 | JE2400 | 4 | 50.5 | 15-1/4 | 18-9/16 |
| 3019.00529 | JE5407 | 4-7/16 | 71.0 | 16-5/8 | 19-3/8 |
| 3019.00532 | JE5408 | 4-1/2 | 71.0 | 16-5/8 | 19-3/8 |
| 3019.00535 | JE5415 | 4-15/16 | 100.0 | 18-1/2 | 10-7/8 |

JYR-2000 Flanged Bearings

- Fully self-aligning
- Fixed and expansion unit

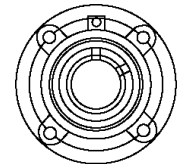


| Order No. | Mfg. No. | Shaft Dia. | Weight (lb) | Overall Length (in) | Overall Height (in) |
|------------|----------|------------|-------------|---------------------|---------------------|
| 3019.00538 | JYR2107 | 1-7/16 | 18.45 | 16-1/4 | 2-7/8* |
| 3019.00541 | JYR2108 | 1-1/2 | 18.40 | 16-1/4 | 2-7/8* |
| 3019.00544 | JYR2111 | 1-11/16 | 10.5 | 16-3/4 | 3 |
| 3019.00547 | JYR2112 | 1-3/4 | 10.5 | 16-3/4 | 3 |
| 3019.00550 | JYR2115 | 1-15/16 | 11.0 | 17 | 3 |
| 3019.00553 | JYR2200 | 2 | 11.0 | 17 | 3 |
| 3019.00556 | JYR2203 | 2-3/16 | 13.5 | 17-3/4 | 3-1/4 |
| 3019.00559 | JYR2207 | 2-7/16 | 17.5 | 18-1/8 | 3-1/2 |
| 3019.00562 | JYR2208 | 2-1/2 | 17.5 | 18-1/8 | 3-1/2 |
| 3019.00565 | JYR2211 | 2-11/16 | 27.00 | 19-1/2 | 3-7/8 |
| 3019.00568 | JYR2212 | 2-3/4 | 27.00 | 19-1/2 | 3-7/8 |
| 3019.00571 | JYR2215 | 2-15/16 | 26.00 | 19-1/2 | 3-7/8 |
| 3019.00574 | JYR2300 | 3 | 26.00 | 19-1/2 | 3-7/8 |
| 3019.00577 | JYR2307 | 3-7/16 | 38.00 | 11-1/8 | 4-9/32 |
| 3019.00580 | JYR2308 | 3-1/2 | 38.00 | 11-1/8 | 4-9/32 |
| 3019.00583 | JYR3411 | 3-11/16 | 53.00 | 12-5/8 | 4-27/32 |
| 3019.00586 | JYR3415 | 3-1/2 | 52.00 | 12-5/8 | 4-27/32 |

*JYR 1-17/16 and 1-1/2 only available with three bolt flange all other sizes use four holes evenly spaced.

JYRP-2000 Piloted Flange Bearings

- Fully self-aligning
- Fixed and expansion units



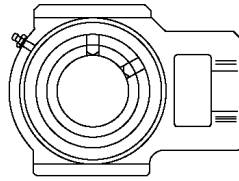
| Order No. | Mfg. No. | Shaft Dia. | Weight (lb) | Overall Length (in) | Overall Height (in) |
|------------|-----------------|------------|-------------|---------------------|---------------------|
| 3019.00589 | JYRP23151-7/16 | 16.30 | 15-1/4 | 2-57/64 | |
| 3019.00592 | JYRP21081-1/2 | 16.30 | 15-1/4 | 2-57/64 | |
| 3019.00595 | JYRP21111-11/16 | 17.75 | 16-1/8 | 3-5/32 | |
| 3019.00598 | JYRP21121-3/4 | 17.65 | 16-1/8 | 3-5/32 | |
| 3019.00601 | JYRP21151-15/16 | 18.15 | 16-3/8 | 3-5/32 | |
| 3019.00604 | JYRP22002 | 18.15 | 16-3/8 | 3-5/32 | |
| 3019.00607 | JYRP22032-3/16 | 19.90 | 17-1/8 | 3-5/16 | |
| 3019.00610 | JYRP22072-7/16 | 14.0 | 17-5/8 | 3-1/2 | |
| 3019.00613 | JYRP22082-1/2 | 13.5 | 17-5/8 | 3-1/2 | |
| 3019.00616 | JYRP22112-11/16 | 20.5 | 18-1/4 | 3-29/32 | |
| 3019.00619 | JYRP22122-3/4 | 20.5 | 18-1/4 | 3-29/32 | |
| 3019.00622 | JYRP22152-15/16 | 19.5 | 18-1/4 | 3-29/32 | |
| 3019.00625 | JYRP23003 | 19.5 | 18-1/4 | 3-29/32 | |
| 3019.00628 | JYRP23073-7/16 | 29.5 | 10-1/4 | 3-3/16 | |
| 3019.00631 | JYRP23083-1/2 | 29.0 | 10-1/4 | 3-3/16 | |
| 3019.00634 | JYRP23113-11/16 | 41.0 | 10-7/8 | 4-13/16 | |
| 3019.00637 | JYRP23153-5/16 | 41.0 | 10-7/8 | 4-13/16 | |
| 3019.00640 | JYRP24004 | 40.0 | 10-7/8 | 4-13/16 | |

Tolerance on OD of pilot diameter is (=0.000"/=0.005")

Jones

Normal/Heavy Duty Take-Up Blocks JT-2000

- Single set collar



| Order No. | Mfg. No. | Shaft Size (in) | Working Load | Size Code |
|------------|-----------|-----------------|--------------|-----------|
| 3019.00643 | JT4-2107 | 1-7/16 | 117600 | 14 |
| 3019.00646 | JT4-2108 | 1-1/2 | 117600 | 14 |
| 3019.00649 | JT5-2111 | 1-11/16 | 112300 | 15 |
| 3019.00652 | JT5-2112 | 1-3/4 | 112300 | 15 |
| 3019.00655 | JT6-2115 | 1-15/16 | 112300 | 16 |
| 3019.00658 | JT6-2200 | 2 | 112300 | 16 |
| 3019.00661 | JT7-2203 | 2-3/16 | 113500 | 17 |
| 3019.00664 | JT8-2207 | 2-7/16 | 120900 | 18 |
| 3019.00667 | JT8-2208 | 2-1/2 | 120900 | 18 |
| 3019.00670 | JT9-2211 | 2-11/16 | 126800 | 19 |
| 3019.00673 | JT9-2212 | 2-3/4 | 126800 | 19 |
| 3019.00676 | JT9-2215 | 2-15/16 | 126800 | 19 |
| 3019.00679 | JT9-2300 | 3 | 126800 | 19 |
| 3019.00682 | JT10-2307 | 3-7/16 | 127300 | 10 |
| 3019.00685 | JT10-2308 | 3-1/2 | 127300 | 10 |
| 3019.00688 | JT11-2311 | 3-11/16 | 145400 | 11 |
| 3019.00691 | JT11-2315 | 3-15/16 | 145400 | 11 |
| 3019.00694 | JT11-2400 | 4 | 145400 | 11 |

JT-5000

- Double set collar
- Take-up blocks on this page may be used with JHT, JFT, JAT, JGT or CU frames.; fixed and expansion units

| Order No. | Mfg. No. | Shaft Size (in) | Working Load | Size Code |
|------------|-----------|-----------------|--------------|-----------|
| 3019.00697 | JT11-5311 | 3-11/16 | 145400 | 11 |
| 3019.00700 | JT11-5315 | 3-15/16 | 145400 | 11 |
| 3019.00703 | JT11-5400 | 4 | 145400 | 11 |
| 3019.00706 | JT12-5407 | 4-7/16 | 153700 | 12 |
| 3019.00709 | JT12-5408 | 4-1/2 | 153700 | 12 |
| 3019.00712 | JT12-5408 | 4-1/2 | 153700 | 12 |
| 3019.00715 | JT14-5507 | 5-7/16 | 140900 | 14 |
| 3019.00718 | JT15-5515 | 5-15/16 | 140900 | 15 |
| 3019.00721 | JT15-5600 | 6 | 140900 | 15 |
| 3019.00724 | JT16-5607 | 6-7/16 | 165300 | 16 |
| 3019.00727 | JT16-5615 | 6-15/16 | 165300 | 16 |
| 3019.00730 | JT16-5700 | 7 | 165300 | 16 |

Dimensions subject to change. Certified dimensions of ordered material furnished on request.



NACHI

Spherical Roller Bearings



| Order No. | Mfg. No. | Sizes (mm) |
|------------|--------------|------------------|
| 3029.00028 | 22205EW33C3 | 25 x 125 x 18 |
| 3029.00031 | 22206EW33C3 | 30 x 162 x 20 |
| 3029.00034 | 22207EW33C3 | 35 x 172 x 23 |
| 3029.00037 | 22207EW33KC3 | 35 x 172 x 23 |
| 3029.00040 | 22208EW33C3 | 40 x 180 x 23 |
| 3029.00043 | 22208EW33KC3 | 40 x 180 x 23 |
| 3029.00046 | 22209EW33C3 | 45 x 185 x 23 |
| 3029.00049 | 22209EW33KC3 | 45 x 185 x 23 |
| 3029.00052 | 22210EW33C3 | 50 x 190 x 23 |
| 3029.00055 | 22210EW33KC3 | 50 x 190 x 23 |
| 3029.00058 | 22211EW33C3 | 55 x 100 x 25 |
| 3029.00061 | 22211EW33KC3 | 55 x 100 x 25 |
| 3029.00064 | 22212EW33C3 | 60 x 110 x 28 |
| 3029.00067 | 22212EW33KC3 | 60 x 110 x 28 |
| 3029.00070 | 22213EW33C3 | 70 x 125 x 31 |
| 3029.00073 | 22213EW33KC3 | 70 x 125 x 31 |
| 3029.00076 | 22214EW33C3 | 75 x 130 x 31 |
| 3029.00079 | 22214EW33KC3 | 175 x 130 x 31 |
| 3029.00082 | 22215EW33C3 | 180 x 140 x 33 |
| 3029.00085 | 22215EW33KC3 | 180 x 140 x 33 |
| 3029.00088 | 22216EW33C3 | 185 x 150 x 36 |
| 3029.00091 | 22216EW33KC3 | 185 x 150 x 36 |
| 3029.00094 | 22217EW33C3 | 190 x 160 x 40 |
| 3029.00097 | 22217EW33KC3 | 190 x 160 x 40 |
| 3029.00100 | 22218EW33C3 | 195 x 170 x 43 |
| 3029.00103 | 22218EW33KC3 | 195 x 170 x 43 |
| 3029.00106 | 22219EW33C3 | 100 x 180 x 46 |
| 3029.00109 | 22219EW33KC3 | 100 x 180 x 46 |
| 3029.00111 | 22220EW33C3 | 110 x 200 x 53 |
| 3029.00114 | 22220EW33KC3 | 110 x 200 x 53 |
| 3029.00117 | 22222EW33C3 | 120 x 215 x 58 |
| 3029.00120 | 22222EW33KC3 | 120 x 215 x 58 |
| 3029.00123 | 22224EW33C3 | 130 x 230 x 64 |
| 3029.00126 | 22224EW33KC3 | 130 x 230 x 64 |
| 3029.00129 | 22226EW33C3 | 140 x 250 x 68 |
| 3029.00130 | 22228EW33C3 | 140 x 250 x 68 |
| 3029.00133 | 22230EW33C3 | 150 x 270 x 73 |
| 3029.00136 | 22308EW33C3 | 140 x 190 x 33 |
| 3029.00139 | 22309EW33C3 | 145 x 100 x 36 |
| 3029.00142 | 22310EW33C3 | 150 x 110 x 40 |
| 3029.00145 | 22311EW33C3 | 155 x 120 x 43 |
| 3029.00148 | 22312EW33C3 | 160 x 130 x 46 |
| 3029.00151 | 22313EW33C3 | 165 x 140 x 48 |
| 3029.00154 | 22314EW33C3 | 170 x 150 x 51 |
| 3029.00157 | 22315EW33C3 | 175 x 160 x 55 |
| 3029.00160 | 22317EW33C3 | 185 x 180 x 60 |
| 3029.00163 | 22318EW33C3 | 190 x 190 x 64 |
| 3029.00166 | 22320EW33C3 | 100 x 215 x 73 |
| 3029.00169 | 22322EW33C3 | 110 x 215 x 73 |
| 3029.00172 | 23022EW33C3 | 110 x 170 x 45 |
| 3029.00175 | 23024EW33C3 | 120 x 180 x 45 |
| 3029.00178 | 23026EW33C3 | 130 x 200 x 52 |
| 3029.00181 | 23028EW33C3 | 140 x 210 x 53 |
| 3029.00184 | 23030EW33C3 | 150 x 225 x 56 |
| 3029.00187 | 23120EW33C3 | 100 x 65 x 52 |
| 3029.00190 | 23122EW33C3 | 110 x 180 x 56 |
| 3029.00193 | 23124EW33C3 | 120 x 200 x 62 |
| 3029.00196 | 23126EW33C3 | 130 x 210 x 64 |
| 3029.00199 | 23128EW33C3 | 140 x 225 x 68 |
| 3029.00202 | 23130EW33C3 | 150 x 250 x 80 |
| 3029.00205 | 23218EW33C3 | 90 x 160 x 52.4 |
| 3029.00208 | 23220EW33C3 | 100 x 180 x 60.3 |
| 3029.00211 | 23222EW33C3 | 110 x 200 x 69.8 |
| 3029.00214 | 23224EW33C3 | 120 x 215 x 76 |
| 3029.00217 | 23226EW33C3 | 130 x 230 x 80 |
| 3029.00220 | 23228EW33C3 | 140 x 250 x 88 |
| 3029.00223 | 23230EW33C3 | 150 x 270 x 96 |

30