

# TURNER™ Mounted Bearings

## SAE 52100 Inner & Outer Race

True bearing steel. Other manufacturers use cheaper steel on inner race.

## Wide Inner Race

Reduces inner race cocking and increases life.

## Steel Retainer

Increased thermal and fatigue resistance vs. cheaper plastic retainer used by other manufacturers.

## Anti-Rotation Device

Keeps the bearing from spinning in the housing while allowing it to self-align.

## Seal with Flinger

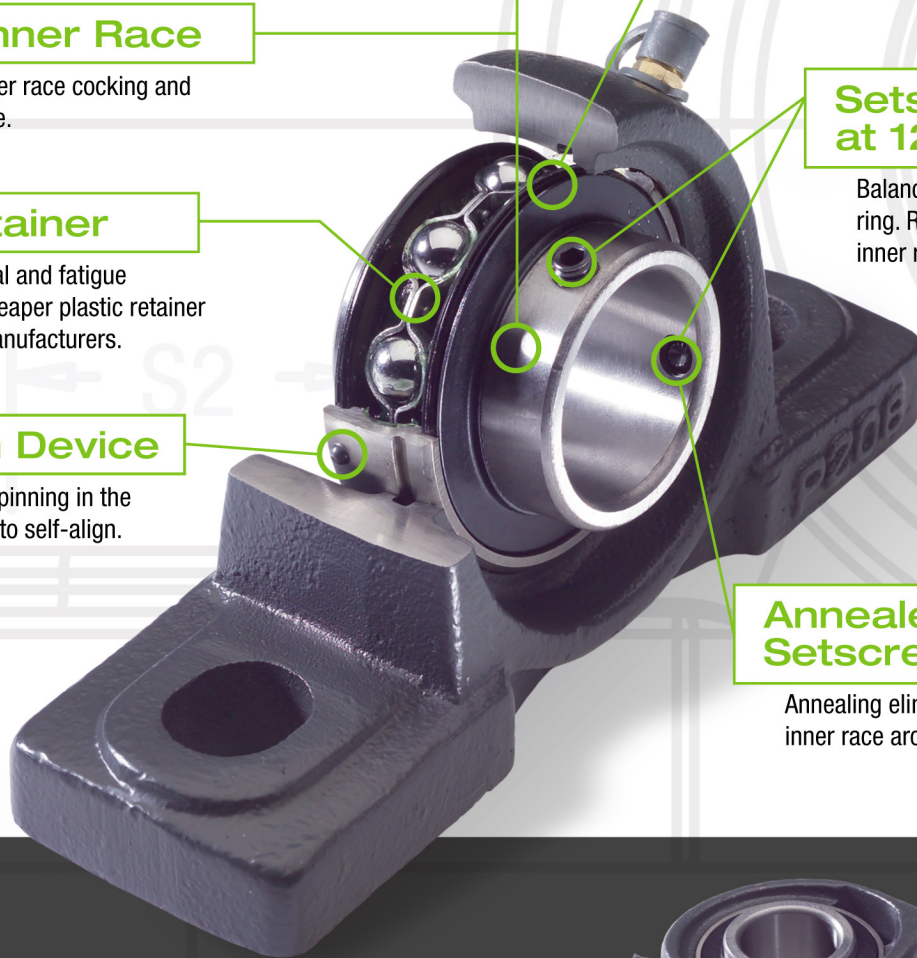
Flinger spins with inner race, keeping dirt away. Creates a labyrinth to keep contaminants out.

## Setscrews at 120°

Balances internal forces on inner ring. Retains roundness of inner ring. Increases life.\*

## Annealed Setscrew Ports

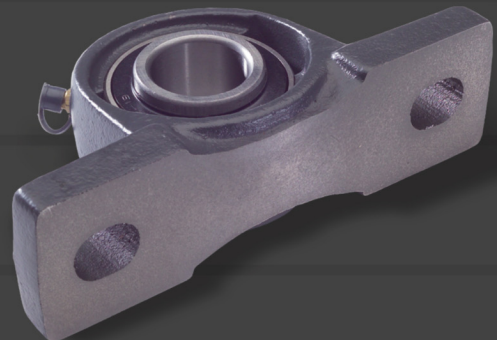
Annealing eliminates cracking of the inner race around setscrew ports.



\* Inch-dimensioned bearings have inch-dimensioned setscrews and grease fittings. Metric bearings have metric setscrews and grease fittings.

## Solid Base

Gives added housing strength over other products that are not solid base.



# WORTH MORE.

# Interchange Guide

	Turner	Dodge	Fafnir	Seal-Master	Browning	Link Belt	AMI/Asahi	FYH	Peer	Hub City	
<b>Pillow Blocks</b>	UCP205-16	P2B-SC-100	YAS 1	NP-16	VPS-216	P3-U216N	UCP205-16	UCP205-16	UCP205-16	-	
	HCP205-16	P2B-SXR-100	RAS 1	RP-16E	VPE-216	P3-Y216N	UGP205-16	NAP205-16	HCP205-16	-	
	UCAK205-16	P2B-SCB-100	YAK 1	NPL-16	VPLS-216	PL3-U216N	UCLP205-16	SL(UCSL)205-16	UCLP205-16	-	
	HCAK205-16	P2B-SXRB-100	RAK 1	RPL-16E	VPLE-216	PL3-Y216N	UGLP205-16	NAPK205-16	HCLP205-16	-	
	SBP205-16G	-	SAS 1	VP-16	VPS-116	-	BP205-16	VBP205-16	FHSP205-16G	PB251-1	
	SBAK205-16G	-	SAK 1	VPL-16	VPLS-116	-	BLP205-16	VBSL205-16	FHSLP205-16G	PB250-1	
	SAP205-16G	P2B-SXV-100	VAS 1	VP-16E	VPE-116	P3-W216U	KHP205-16	VAP205-16	FHP205-16G	PB221-1	
	SAAK205-16G	P2B-SXVB-100	VAK 1	VPL-16E	VPLE-116	PL3-W216U	KHLP205-16	VASL205-16	FHLP205-16G	PB220-1	
	UCPX05-16	P2B-SCM-100	-	MP-16	VPS-316	-	UCPX05-16	UCPX05-16	UCPX05-16	-	
	SBLP205-16G	-	-	-	-	-	BLLP5-16	BLP205-16	FHSPWC205-16	PB100/150-1	
	SALP205-16G	-	-	-	-	-	KHLLP205-16	ALP205-16	FHPWC205-16	-	
	<b>Tapped Base</b>	UCPA205-16	TB-SC-100	YTB 1	TB-16	VTBS-216	PT3-U216N	UCTB205-16	UCPAN205-16	UCPA205-16	-
		HCPA205-16	TB-SXR-100	RTB 1	RPB-16	VTBE-216	PT3-Y216N	UGTB205-16	NAPAN205-16	HCPA205-16	-
SBPA205-16G		-	STB 1	-	VTBS-116	-	BTB205-16	VBPAN205-16	FHSPA205-16G	TPB250-1	
SAPA205-16G		TB-SXV-100	VTB 1	-	VTBE-116	-	KHTB205-16	VAPAN205-16	FHPA205-16G	-	
<b>2-Bolt Flange Blocks</b>	UCFL/UCFT205-16	F2B-SC-100	YCJT 1	SFT-16	VF2S-216	FX3-U216N	UCFT205-16	UCFL205-16	UCFT205-16	-	
	HCFJT205-16	F2B-SXR-100	RCJT 1	RFT-16E	VF2E-216	FX3-Y216N	UGFJT205-16	NANFL205-16	HCFTS205-16	-	
	SBFL205-16G	-	SCJT 1	VFT-16	VF2S-116	-	BFT205-16	VBFL205-16	FHSFT205-16G	FB260-1	
	SAFL205-16G	F2B-SXV-100	VCJT 1	VFT-16E	VF2E-116	FX3-W216U	KHFT205-16	VAF205-16	FHFT205-16G	FB230-1	
	UCFLX205-16	F2B-SCM-100	-	MSFT-16	VF2S-316	-	UCFLX05-16	-	-	-	
	SBLF205-16G	-	GSFTD 1	-	VF2S-116M	-	BLFL5-16	BLF205-16	FHSLF205-16G	FB110/160-1	
	SALF205-16G	-	GVFTD 1	-	VF2E-116M	-	KHLFL205-16	ALF205-16	FHLF205-16G	-	
	<b>4-Bolt Flange Blocks</b>	UCF205-16	F4B-SC-100	YCJ 1	SF-16	VF4S-216	F3-U216N	UCF205-16	UCF205-16	UCF205-16	-
HCFS205-16		F4B-SXR-100	RCJ 1	RF-16E	VF4E-216	F3-Y216N	UGSLF205-16	NANF205-16	HCFS205-16	-	
SBF205-16G		-	SCJ 1	VF-16	VF4S-116	-	BF205-16	VBF205-16	FHSF205-16G	FB250-1	
SAF205-16G		F4B-SXV-100	VCJ 1	VF-16E	VF4E-116	F3-W216U	KHF205-16	VAF205-16	FHF205-16G	FB220-1	
UCFX05-16		F4B-SCM-100	-	MSF-16	VF4S-316	-	UCFX05-16	UCFX05-16	UCFX05-16	-	
<b>Piloted Flange Block</b>	UCFC205-16	-	-	SFC-16	-	-	UCFC205-16	UCFC205-16	UCFC205-16	-	
	UCFCX05-16	FC-SCM-100	-	MFC-16	VFCS-316	-	UCFCX05-16	UCFCX05-16	-	FC350-1	
<b>Brackets</b>	UCFB205-16	FB-SC-100	-	FB-16	-	FB3-U216N	UCFB205-16	UCFB205-16	UCFB205-16	-	
<b>Take-up</b>	UCST205-16	WSTU-SC-100	YTU 1	ST-16	VTWS-216	TH3-U200N	UCST205-16	UCT205-16	UCT205-16	WSTU250-1	
	HCST205-16	WSTU-SXR-100	RTU 1	RT-16E	VTWE-216	-	UGST205-16	NAT205-16	HCT205-16	WSTU220-1	
	UCTX05-16	WSTU-SCM-100	-	MST-16	VTWS-316	-	UCTX05-16	UCTX05-16	-	-	
<b>Hanger</b>	UCHA205-16	SCHB-SC-100 *zerk	RHC 1	SEHB-16	-	-	UCECH205-16	UCHA205-16	UCHA205-16	-	
<b>Insert Bearings</b>	UC205-16	INS-SC-100	GY1100KRRB	2-1	VS-216	UG216NL	UC205-16	UC205-16	UC205-16	YW250-1	
	HC205-16	INS-SXR-100	G1100KRRB	R-16E	VE-216	YG216NL	UG205-16	NA205-16	HC205-16	YW220-1	
	UCX05-16	INS-SCM-100	GYM100KRRB	3-1	VS-316	-	UCX05-16	UCX05-16	UCX05-16	B350-1	
	SER205-16	-	ER-16	ER-16	VER-216	-	SER205-16	ER205-16	SER-16	-	
	SB205-16	-	YA100RRB	L-16	LS-116	S216EL	B5-16	SB205-16KG5	FHS205-16	B250-1	
	SB205-16G	INS-VSC-100	GYA100RRB	V-16	VS-116	SG216EL	B5-16	SB205-16KP8	FHS205-16	B250-1	
	CSB205-16	-	YA100RR	SL-16	SLS-116	-	BR5-16	SBB205-16	FHSR205-16	-	
	SA205-16	-	RA100RRB	L-16E	LE-116	W216UL	KH205-16	SA205-16FP7	FH205-16	B220-1	
	SA205-16G	INS-SXV-100	GRA100RRB	V-16E	VE-116	WG216UL	KH205-16	SA205-16FP9	FH205-16	B220-1	
	CSA205-16	-	RA100RR	SL-16E	SLE-116	WB216UL	KHR205-16	SAA205-16	FHR205-16	-	

Only intended as a guideline, not as a guarantee of exact interchange.

- Round Bolt Hole
- Square Bolt Hole

DISTRIBUTED BY: