

Mounted Tapered Roller

Mtd. Tapered Bearings



Modular bearing assembly consisting of sealed and lubricated inch or metric tapered bearing with setscrew locking collars contained within a variety of housings types, mounting styles, and housing materials. Mounted tapered roller bearings provide an antifriction solution when supporting rotating shafts with combination radial and thrust loads.

Housing Styles

Pillow Block, Flanges, Take Up Assemblies

Locking Styles

Setscrew

Bore Size Range

1" to 5" and 35 mm to 125 mm

Housing Materials

Cast Iron, and Cast Steel

Mounted Tapered Roller Selection Guide

Mtd. Tapered Bearings



Brand	Image	Series	Housing Style
Sealmaster		RPB	Two Bolt Pillow Block
		RPB	Four Bolt Pillow Block
		ERPB	Expansion Two Bolt Pillow Block
		ERPB	Expansion Four Bolt Pillow Block
		DRPB	Two Bolt Pillow Block
		DRPB	Four Bolt Pillow Block
		EDPB	Expansion Two Bolt Pillow Block
		EDPB	Expansion Four Bolt Pillow Block
		RPBXT	Four Bolt Pillow Block (SAF mounting dimensions)
		ERPBXT	Expansion Four Bolt Pillow Block (SAF mounting dimensions)
		SPB	Two Bolt Pillow Block
		SPB	Four Bolt Pillow Block

Mounted Tapered Roller Bearings **SEALMASTER**[®]

Mtd. Tapered Bearings



LOCK TYPE							SIZE RANGE	
Double Lock Collar	Single Lock Collar	Housing Material	Standard Seal	Seal Options	Inch	Metric		
RPB-2	RPBA-2	Cast Iron	Felt	Contact, Nomex	1 3/16" - 3 1/2"	35 mm - 95 mm		
RPB-4	RPBA-4	Cast Iron	Felt	Contact, Nomex	2 1/4" - 5"	60 mm - 125 mm		
ERPB-2	ERPBA-2	Cast Iron	Felt	Contact, Nomex	1 3/4" - 3 1/2"	45 mm - 95 mm		
ERPB-4	ERPBA-4	Cast Iron	Felt	Contact, Nomex	3 15/16" - 5"	100 mm - 125 mm		
DRPB-2	DRPBA-2	Cast Iron	Felt	Contact, Nomex	1 3/4" - 3 1/2"	45 mm - 95 mm		
DRPB-4	DRPBA-4	Cast Iron	Felt	Contact, Nomex	3 15/16" - 4"	100 mm - 105 mm		
N/A	EDPBA-2	Cast Iron	Felt	Contact, Nomex	1 3/4" - 3 1/2"	100 mm - 105 mm		
N/A	EDPBA-4	Cast Iron	Felt	Contact, Nomex	3 15/16" - 4"	100 mm - 105 mm		
RPBXT-4	N/A	Cast Iron	Felt	Contact, Nomex	2 1/4" - 5"	60 mm - 125 mm		
ERPBXT-4	N/A	Cast Iron	Felt	Contact, Nomex	2 1/4" - 5"	60 mm - 125 mm		
SPB-2	N/A	Cast Steel	Felt	Contact, Nomex	1 1/2" - 3 1/2"	40 mm - 95 mm		
SPB-4	N/A	Cast Steel	Felt	Contact, Nomex	3 15/16" - 5"	100 mm - 125 mm		

Mounted Tapered Roller Selection Guide

Mtd. Tapered Bearings



Brand	Image	Series	Housing Style
Sealmaster		RFB	Four Bolt Flange
		RFP	Piloted Flange Cartridge
		ERCI	Expansion Cartridge Insert
		RCI	Roller Cartridge Insert
Browning		PBE920	Two Bolt Pillow Block
		PBE920F	Four Bolt Pillow Block
		FBE920	Flange Block
		TUE920	Take Up
		T1000	Take Up Frame

Mounted Tapered Roller Bearings **SEALMASTER**[®]

LOCK TYPE		SIZE RANGE					
Double Lock Collar	Single Lock Collar	Housing Material	Standard Seal	Seal Options	Inch	Metric	
RFB	RFBA	Cast Iron	Felt	Contact, Nomex	1 3/16" - 4"	35 mm - 105 mm	
RFP	RFPA	Cast Iron	Felt	Contact, Nomex	1 3/16" - 5"	35 mm - 125 mm	
ERCI	ERCIA	N/A	Felt	Contact, Nomex	1 3/4" - 5"	45 mm - 125 mm	
RCI	RCIA	N/A	Felt	Contact, Nomex	1 3/16" - 5"	35 mm - 125 mm	
PBE920	N/A	Cast Iron	Contact	N/A	1 3/16" - 3 1/2"	N/A	
PBE920F	N/A	Cast Iron	Contact	N/A	2 1/4" - 5"	N/A	
FBE920	N/A	Cast Iron	Contact	N/A	1 3/16" - 4"	N/A	
TUE920	N/A	Cast Iron	Contact	N/A	1 3/8" - 4 7/16"	N/A	
N/A	N/A	N/A	N/A	N/A	1 1/2" - 4 1/2"	N/A	

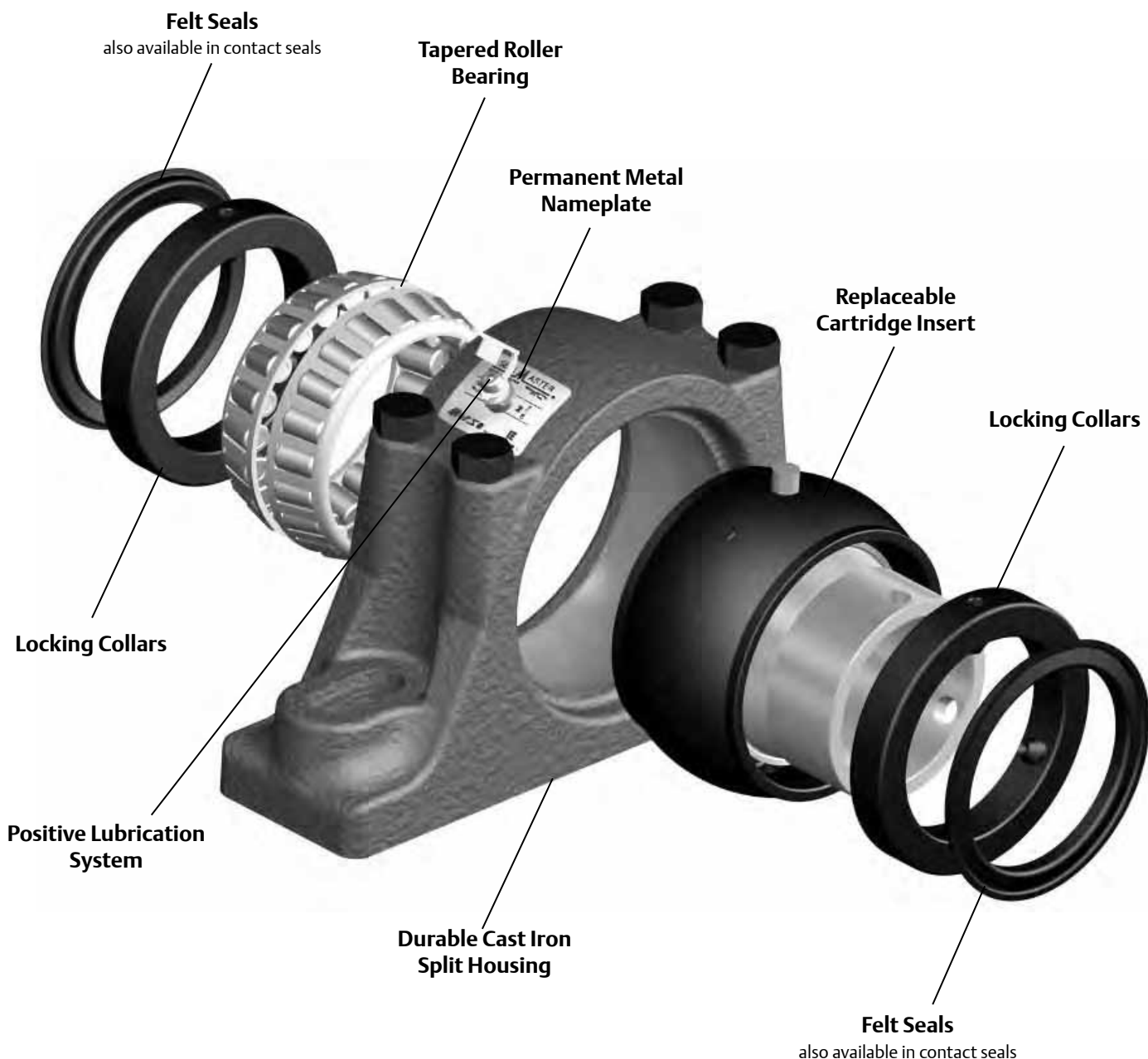


Mtd. Tapered Bearings

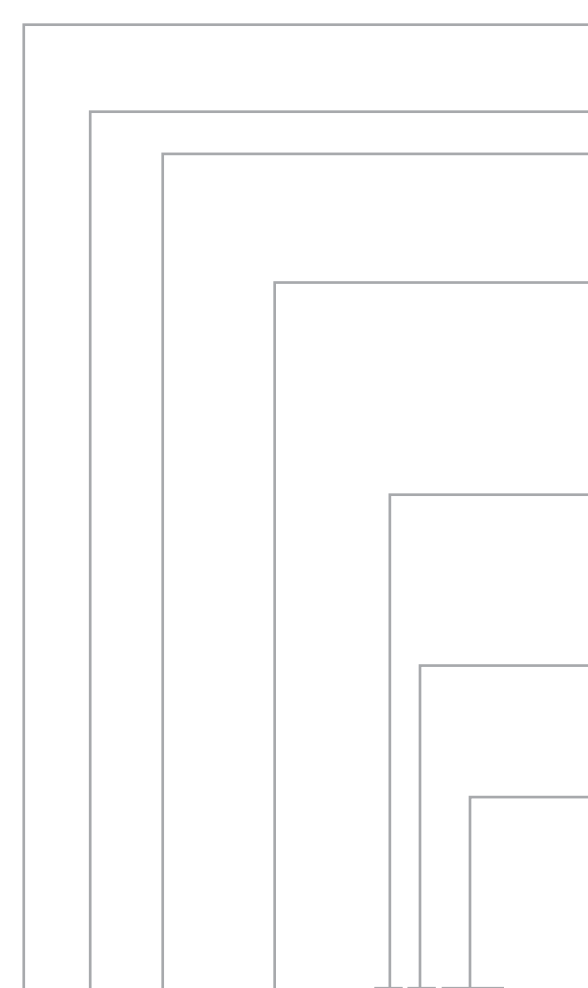
Sealmaster Tapered Roller Bearings

Sealmaster® RPB mounted tapered roller bearings are a dimensionally interchangeable upgrade from competitive Type E bearings. The exclusive features include unitized replaceable inserts, self-aligning capability, split housing and the Sealmaster alignment pin which provides for a direct path for lubrication into the bearing and helps prevent outer ring rotation. The Sealmaster RPB is available with two traditional setscrew locking collars for easy installation. The felt seal with flinger provides a good balance between contaminant entry, grease retention and friction. Depending on application requirements, these bearings are available in both inch and metric with a wide variety of housing, sealing, and lubrication options as illustrated on the pages to follow.

Mtd. Tapered Bearings



Tapered Roller Bearing Nomenclature



ERPBA - 107 - C2CR

- Optional Prefix**
E - Expansion
- Housing Type** (* see below)
- Optional Suffix**
A - Single Lock Collar
No Suffix - Two Lock Collars
- Bore Size**
Inch - First Digit - Number of Inches
Second & Third Digit - Number of 1/16" of Inches (ex. 107 = 1 7/16")
Metric - 65 mm = 65 mm
- Seal Option**
C - Contact Seal
N - Nomex Seal
No Suffix - Felt Seal
- Bolts**
2 - Two Bolt Base
4 - Four Bolt Base
- Options**
CR - Corrosion Resistant
AH - Air Handling
TF - Tight Fit
RC - Reduced Internal Clearance

- * Housing Type**
RPB - Roller Pillow Block
DRPB - Roller Pillow Block (DI)
RPBXT - Roller Pillow Block (SAF Mounting Dim.)
SPB - Steel Pillow Block
RFB - Roller Flange Block
RFP - Roller Flange Pilot



ERCI - A - 215

- Optional Prefix**
E - Expansion
- Housing Type**
RCI - Replaceable Cartridge Insert
- Optional Suffix**
A - Single Lock Collar
No Suffix - Two Lock Collars
- Bore Size**
Inch - First Digit - Number of Inches
Second & Third Digit - Number of 1/16" of Inches (ex. 215 = 2 15/16")

Mtd. Tapered Bearings



Features and Benefits

Mtd. Tapered Bearings



Tapered Roller Bearings

Sealmaster RPB series contains heavy duty tapered roller bearings for radial, thrust and combination loading.



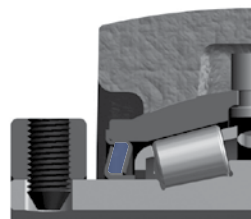
Durable Cast Iron Split Housing

Durable cast iron split housings allow for quick insert replacement when change-out is required. Once installed, the base remains fixed and aligned with the shaft, reducing downtime and maintenance costs. Guide pin in the housing base orientates the proper assembly of the cap during replacement. Pillow block housings have elongated bolt holes for interchangeability with other competitive units. Permanent metal nameplate allows for easy identification after years of operation. Multiple housing styles include 2 and 4 bolt pillow block (RPB), 4 bolt flange (RFB), Piloted flange (RFP). Inch and metric bore size from 1 3/16" – 5" bore and 35 to 125 mm.



Replaceable Cartridge Insert (RCI)

The heart of the RPB is the unitized, self-aligning cartridge insert with integral seals and double locking collars. The replaceable cartridge insert can accommodate +/- 3° static misalignment and is factory sealed and lubricated. The cartridges fit all housing styles and are field replaceable for quick change out. RCI outer races are black oxide treated.

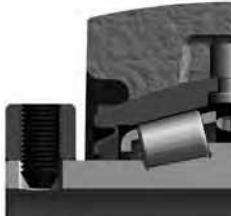


Felt Seals

Patented race mounted felt lined flinger seals help filter out contaminants and are not subject to misalignment distortion. The felt acts as a filter to help exclude contaminants. The rotating flinger helps repel contaminant build-up on the seal surfaces. Felt seal stampings are black oxidized.



Features and Benefits continued



Single Lip Contact Seal

Single lip race mounted contact seals for dry, dirty and wet conditions. It's composed of a steel inner seal with a bonded elastomeric sealing member. The steel inner seal is press fit into the inside diameter of the outer race, while the bonded elastomeric sealing member is held in the proper rubbing contact position on the outer diameter of the inner race. Contact seal stampings are black oxidized.



Positive Lubrication System

Positive lubrication system provides direct grease path to the bearing. The unit is designed with two lubrication ports in the cartridge OD so that one of lube holes in cartridge lines up with grease fitting regardless of insert orientation in the housing. A rubber grommet in housing top recess directs lubricant into bearing cavity. Extra lubrication ports help prevent seal damage by venting excess pressure from over greasing. Sealmaster alignment pin helps prevent outer race rotation.



Collar Mount System

Two locking collars are standard on all units with two setscrews at 120° for balanced three point contact. Precision manufactured diamond faceted point setscrew design contributes to improved clamping and resistance to back out. Single locking collars are available where space limitations are present. Locking collars are black oxidized treated.

Additional Configurations

Expansion Roller Bearing Pillow Blocks

Axial shaft expansion is compensated by a non-expansion (fixed) and expansion (float) arrangement. It is recommended to use both units on one shaft in high temperature applications to help account for linear shaft expansion.



ERCI Cylindrical Cartridge Inserts

Cylindrical cartridge inserts (ERCI) are used in standard expansion ERPB housings or can be mounted into customer designed housings.

Additional Configurations continued



DRPB Series

Interchangeable with most type DI mounting dimensions

DRPBA Series

Interchangeable with most Type K mounting dimensions

RPBXT Series

Interchangeable with four bolt SAF mounting dimensions in shaft sizes from 2 1/4" - 5" (60mm - 125mm).

SPB Series

This series incorporates all features of the standard RPB with cast steel housings in two and four bolt pillow blocks in shaft sizes from 1 1/2" - 5" (40mm - 125mm).

Air Handling

RPB-AH Series designed for HVAC applications. It incorporates all features of the standard RPB with a custom AH fit between the bearing cartridge OD and the bearing housing, which provides lower misalignment torque.

Available in the RPB, RFB & RFP and DRPB Series

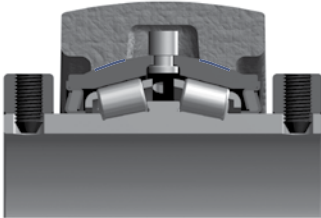
RPB-MM Series

Incorporates all the features of the standard RPB but with metric bore sizes from 35-125mm and metric setscrews



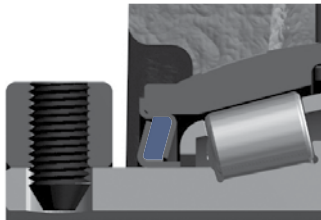
Options

- Custom housing configurations
- Custom lubricants, including synthetic and food grade greases and oil saturated polymers



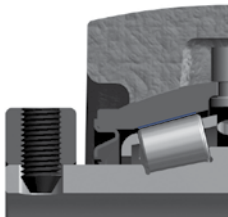
Tight Housing Fit “TF”

(TF suffix) for applications with vibration and rotating loads



High Temperature “N”

High temperature bearing with Nomex* seal and high temperature synthetic grease.



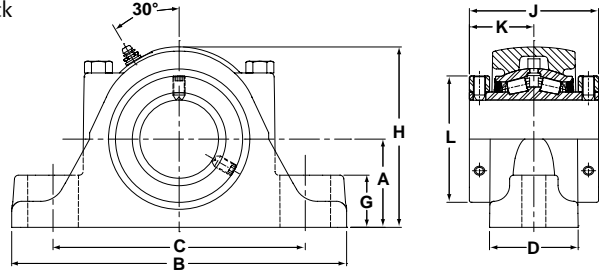
Reduced Bearing Internal Clearance “RC”

(RC suffix) for specific application requirements





- Rolling Elements:** Tapered Roller
- Housing:** Cast Iron Two Bolt Pillow Block
- Self Alignment:** +/- 3 Degrees
- Lock:** Setscrew, Double Collar
- Seal:** Felt
- Optional Seal:** Single Lip Contact
- Temperature:** -20°F to 220°F



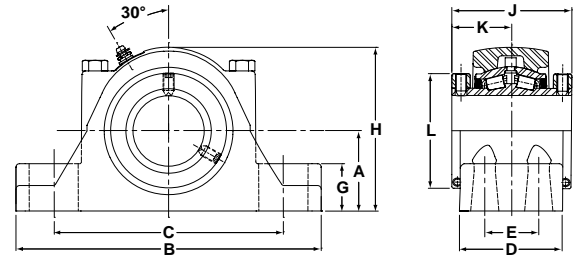
RPB Series Two-Bolt Base Pillow Blocks

Bore Diameter		Part No.	Bearing Insert No.	Basic Dynamic Rating lb/N	Dimensions inch / mm										Unit Wt. lb/kg	
inch	mm				A	B	C		D	G	H	J	K	L		Bolt Size
						Min.	Max.									
1 3/16		RPB-103-2	RCI-103	2975	1 1/2	6 1/4	4 9/16	4 15/16	1 7/8	7/8	3 1/8	2 3/4	1 3/8	2 1/4	1/2	4.8
1 1/4		RPB-104-2	RCI-104	13233	38.1	158.8	115.9	125.4	47.6	22.2	79.4	69.9	34.9	57.2		2.18
1 3/8	35	RPB-106-2	RCI-106	4760	1 7/8	7 1/4	5 5/16	5 15/16	2 1/16	1 1/8	3 13/16	3	1 1/2	2 5/8	1/2	7.7
		RPB-35MM-2	RCI-35MM	21174	47.6	184.2	134.9	150.8	52.4	28.6	96.8	76.2	76.2	66.7		3.5
1 7/16		RPB-107-2	RCI-107													
1 1/2	40	RPB-108-2	RCI-108												1/2	10.9
		RPB-40MM-2	RCI-40MM	6140	2 1/8	7 3/4	5 9/16	6 7/16	2 5/16	1 1/4	4 3/8	3 3/8	1 11/16	2 7/8		4.94
1 5/8		RPB-110-2	RCI-110	27312	54.0	196.9	141.3	163.5	58.7	31.8	111.1	85.7	42.9	73.0		
1 11/16		RPB-111-2	RCI-111													
1 3/4	45	RPB-112-2	RCI-112												5/8	13.2
		RPB-45MM-2	RCI-45MM	8070	2 1/4	8 7/8	6 5/16	7 3/16	2 7/16	1 1/4	4 5/8	3 1/2	1 3/4	3 1/4		5.99
1 15/16		RPB-115-2	RCI-115	35897	57.2	225.4	160.3	182.6	61.9	31.8	117.5	88.9	44.5	82.6		
2		RPB-50MM-2	RCI-50MM													
	55	RPB-55MM-2	RCI-55MM	8570	2 1/2	9 5/8	6 11/16	7 15/16	2 9/16	1 7/16	5 1/8	3 3/4	1 7/8	3 5/8	5/8	15.7
2 3/16		RPB-203-2	RCI-203	38121	63.5	244.5	169.9	201.6	65.1	36.5	130.2	95.3	47.6	92.1		7.12
2 1/4	60	RPB-204-2	RCI-204												5/8	20.7
		RPB-60MM-2	RCI-60MM	9030	2 3/4	10 3/8	6 15/16	8 11/16	2 3/4	1 5/8	5 5/8	4	2	3 15/16		9.39
2 7/16		RPB-207-2	RCI-207	40167	69.9	263.5	176.2	220.7	69.9	41.3	142.9	101.6	50.8	100.0		
2 1/2		RPB-208-2	RCI-208													
	65	RPB-65MM-2	RCI-65MM													
2 11/16	70	RPB-211-2	RCI-211												3/4	29.3
2 3/4		RPB-212-2	RCI-212													13.29
		RPB-70MM-2	RCI-70MM	9630	3 1/8	11 3/4	8 1/16	9 11/16	3	1 3/4	6 3/8	4 1/2	2 1/4	4 23/32		
2 15/16		RPB-215-2	RCI-215	42836	79.4	298.5	204.8	246.1	76.2	44.5	161.9	114.3	57.2	119.9		
		RPB-75MM-2	RCI-75MM													
	75	RPB-300-2	RCI-300													
3 3/16	80	RPB-80MM-2	RCI-80MM												7/8	56.0
3 1/4		RPB-303-2	RCI-303													25.40
		RPB-304-2	RCI-304													
		RPB-85MM-2	RCI-85MM	15320	3 3/4	13 3/4	10 1/8	11 1/4	4 1/8	2	7 3/4	5	2 1/2	5 7/16		
3 7/16		RPB-307-2	RCI-307	65147	95.3	349.3	257.2	285.8	104.8	52.4	196.9	127.0	63.5	138.1		
	90	RPB-308-2	RCI-308													
		RPB-90MM-2	RCI-90MM													
		RPB-95MM-2	RCI-95MM													

Metric dimensions for reference only.
Not all parts are available from stock.



- Rolling Elements:** Tapered Roller
- Housing:** Cast Iron Four Bolt Pillow Block
- Self Alignment:** +/- 3 Degrees
- Lock:** Setscrew, Double Collar
- Seal:** Felt
- Optional Seal:** Single Lip Contact
- Temperature:** -20°F to 220°F

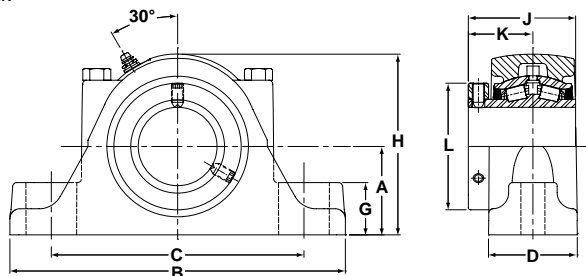


RPB Series Four-Bolt Base Pillow Blocks

Bore Diameter		Part No.	Bearing Insert No.	Basic Dynamic Rating lb/N	Dimensions inch / mm											Unit Wt. lb/kg		
inch	mm				A	B	C		D	E	G	H	J	K	L		Bolt Size	
						Min.	Max.											
2 1/4	60	RPB-204-4	RCI-204	9030	2 3/4	10 3/8	7 3/4	8 3/4	3 1/2	1 7/8	1 5/8	5 5/8	4	2	3 15/16	5/8	22.4	
		RPB-60MM-4	RCI-60MM															40167
2 7/16	65	RPB-207-4	RCI-207	42836	2 3/4	10 3/8	7 3/4	8 3/4	3 1/2	1 7/8	1 5/8	5 5/8	4	2	3 15/16	5/8	10.16	
2 1/2		RPB-208-4	RCI-208															40167
2 11/16	70	RPB-211-4	RCI-211	9630	3 1/8	11 3/4	8 3/4	10	3 3/4	2 1/8	1 3/4	6 3/8	4 1/2	2 1/4	4 23/32	5/8	31.5	
		RPB-212-4	RCI-212															42836
2 15/16	75	RPB-215-4	RCI-215	42836	3 1/8	11 3/4	8 3/4	10	3 3/4	2 1/8	1 3/4	6 3/8	4 1/2	2 1/4	4 23/32	5/8	14.29	
3		RPB-215-4	RCI-215															42836
3 3/16	80	RPB-303-4	RCI-303	15320	3 3/4	13 3/4	10 9/16	11 1/2	4 1/2	2 3/8	2 1/16	7 3/4	5	2 1/2	5 7/16	3/4	59.6	
		RPB-304-4	RPB-304															68147
3 7/16	85	RPB-307-4	RCI-307	68147	3 3/4	13 3/4	10 9/16	11 1/2	4 1/2	2 3/8	2 1/16	7 3/4	5	2 1/2	5 7/16	3/4	27.03	
3 1/2		RPB-308-4	RCI-308															68147
3 15/16	90	RPB-308-4	RCI-308	68147	3 3/4	13 3/4	10 9/16	11 1/2	4 1/2	2 3/8	2 1/16	7 3/4	5	2 1/2	5 7/16	3/4	27.03	
		3 1/2	RPB-308-4															RCI-308
3 15/16	95	RPB-308-4	RCI-308	68147	3 3/4	13 3/4	10 9/16	11 1/2	4 1/2	2 3/8	2 1/16	7 3/4	5	2 1/2	5 7/16	3/4	27.03	
		3 1/2	RPB-308-4															RCI-308
3 15/16	100	RPB-315-4	RCI-315	20980	4 1/4	15 1/4	11	13	4 1/2	2 1/4	2 7/16	8 5/8	6 1/4	3 1/8	5 15/16	3/4	76.9	
		4	RPB-100MM-4															RCI-100MM
4 7/16	110	RPB-407-4	RCI-407	25750	4 3/4	16 1/2	11 3/4	13 7/8	4 5/8	2 1/2	2 3/4	9 5/8	6 3/4	3 3/8	6 13/32	3/4	95.6	
		4 1/2	RPB-408-4															RCI-408
4 15/16	120	RPB-115MM-4	RCI-115MM	114542	4 3/4	16 1/2	11 3/4	13 7/8	4 5/8	2 1/2	2 3/4	9 5/8	6 3/4	3 3/8	6 13/32	3/4	43.36	
		5	RPB-115MM-4															RCI-115MM
4 15/16	125	RPB-120MM-4	RCI-120MM	35520	5 1/2	18 1/2	13 1/2	15 7/8	5 1/8	2 3/4	3 1/8	11	7 1/4	3 5/8	7 13/32	7/8	143.6	
		5	RPB-125MM-4															RCI-125MM
4 15/16	125	RPB-415-4	RCI-415	158001	5 1/2	18 1/2	13 1/2	15 7/8	5 1/8	2 3/4	3 1/8	11	7 1/4	3 5/8	7 13/32	7/8	65.14	
		5	RPB-500-4															RCI-500



- Rolling Elements:** Tapered Roller
- Housing:** Cast Iron Two Bolt Pillow Block
- Self Alignment:** +/- 3 Degrees
- Lock:** Setscrew, Single Collar
- Seal:** Felt
- Optional Seal:** Single Lip Contact
- Temperature:** -20°F to 220°F



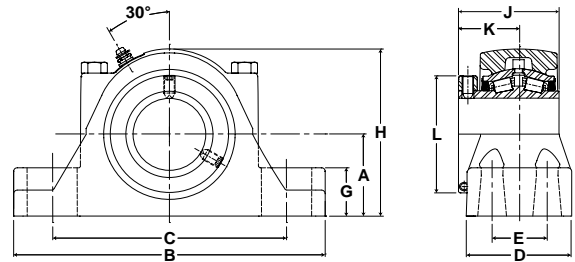
RPBA Series Two-Bolt Base Pillow Blocks - Single Lock Collar

Bore Diameter		Part No.	Bearing Insert No.	Basic Dynamic Rating lb/N	Dimensions inch / mm										Unit Wt. lb/kg			
					A	B	C		D	G	H	J	K	L		Bolt Size		
inch	mm						Min.	Max.										
1 3/16		RPBA-103-2	RCIA-103	2975	1 1/2	6 1/4	4 9/16	4 15/16	1 7/8	7/8	3 1/8	2 3/8	1 3/8	2 1/4	1/2	4.8		
1 1/4		RPBA-104-2	RCIA-104	13233	38.1	158.8	115.9	125.4	47.6	22.2	79.4	60.3	34.9	57.2		2.18		
1 3/8	35	RPBA-106-2	RCIA-106	4760	1 7/8	7 1/4	5 5/16	5 15/16	2 1/16	1 1/8	3 13/16	2 17/32	1 1/2	2 5/8	1/2	7.7		
		RPBA-35MM-2	RCI-35MM	21174	47.6	184.2	134.9	150.8	52.4	28.6	96.8	64.3	38.1	66.7		3.49		
1 7/16			RPBA-107-2	RCIA-107														
1 1/2	40	RPBA-108-2	RCIA-108	6140	2 1/8	7 3/4	5 9/16	6 7/16	2 5/16	1 1/4	4 3/8	2 27/32	1 11/16	2 7/8	1/2	10.9		
		RPBA-40MM-2	RCI-40MM														27312	54.0
1 5/8			RPBA-110-2	RCIA-110														
1 11/16			RPBA-111-2	RCIA-111														
1 3/4	45	RPBA-112-2	RCIA-112	8070	2 1/4	8 7/8	6 5/16	7 3/16	2 7/16	1 1/4	4 5/8	2 61/64	1 3/4	3 1/4	5/8	13.2		
1 15/16			RPBA-45MM-2														RCI-45MM	35897
			RPBA-115-2	RCIA-115														
	50	RPBA-50MM-2	RCI-50MM															
2			RPBA-200-2	RCIA-200														
	55	RPBA-55MM-2	RCI-55MM	8570	2 1/2	9 5/8	6 11/16	7 15/16	2 9/16	1 7/16	5 1/8	3 1/8	1 7/8	3 5/8	5/8	15.7		
2 3/16			RPBA-203-2	RCIA-203	38121	63.5	244.5	169.9	201.6	65.1	36.5	130.2	79.4	47.6			92.1	7.12
2 1/4	60	RPBA-204-2	RCIA-204	9030	2 3/4	10 3/8	6 15/16	8 11/16	2 3/4	1 5/8	5 5/8	3 5/16	2	3 15/16	5/8	20.7		
2 7/16			RPBA-60MM-2														RCI-60MM	40167
2 1/2			RPBA-207-2	RCIA-207														
			RPBA-208-2	RCIA-208														
	65	RPBA-209-2	RCI-209															
			RPBA-65MM-2	RCI-65MM														
2 11/16	70	RPBA-211-2	RCIA-211	9630	3 1/8	11 3/4	8 1/16	9 11/16	3	1 3/4	6 3/8	3 11/16	2 1/4	4 23/32	3/4	29.3		
2 3/4			RPBA-212-2														RCIA-212	42836
2 15/16			RPBA-70MM-2	RCI-70MM														
			RPBA-215-2	RCIA-215														
			RPBA-75MM-2	RCI-75MM														
3		RPBA-300-2	RCIA-300															
3 3/16	80	RPBA-80MM-2	RCI-80MM															
3 1/4			RPBA-303-2	RCIA-303														
	85	RPBA-304-2	RCIA-304															
3 7/16			RPBA-85MM-2	RCI-85MM	15320	3 3/4	13 3/4	10 1/8	11 1/4	4 1/8	2	7 3/4	4 3/16	2 1/2	5 7/16	7/8	56	
			RPBA-307-2	RCIA-307	68147	95.3	349.3	257.2	285.8	104.8	50.8	196.9	106.4	63.5	138.1			25.40
3 1/2		RPBA-308-2	RCIA-308															
	90	RPBA-90MM-2	RCI-90MM															
	95	RPBA-95MM-2	RCI-95MM															

Metric dimensions for reference only.
Not all parts are available from stock.



- Rolling Elements:** Tapered Roller
- Housing:** Cast Iron Four Bolt Pillow Block
- Self Alignment:** +/- 3 Degrees
- Lock:** Setscrew, Single Collar
- Seal:** Felt
- Optional Seal:** Single Lip Contact
- Temperature:** -20°F to 220°F

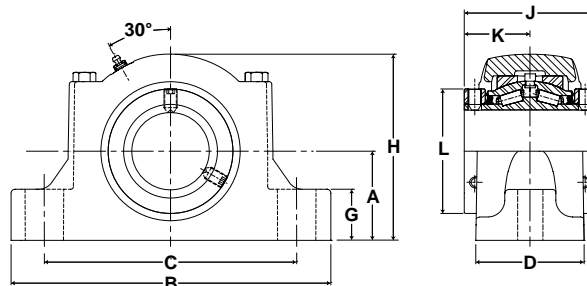


RPBA Series Four-Bolt Base Pillow Blocks

Bore Diameter		Part No.	Bearing Insert No.	Basic Dynamic Rating lb/N	Dimensions inch / mm											Unit Wt. lb/kg	
					A	B	C		D	E	G	H	J	K	L		Bolt Size
inch	mm						Min.	Max.									
2 1/4	60	RPBA-204-4	RCIA-204	9030	2 3/4	10 3/8	7 3/4	8 3/4	3 1/2	1 7/8	1 5/8	5 5/8	3 5/16	2	3 15/16	5/8	22.4
		RPBA-60MM-4	RCI-60MM														
2 7/16	65	RPBA-207-4	RCIA-207	42836	2 1/2	10 3/4	7 3/4	8 3/4	3 3/4	2 1/8	1 3/4	6 3/8	3 11/16	2 1/2	4 23/32	5/8	31.5
2 1/2		RPBA-208-4	RCIA-208														
2 11/16	70	RPBA-211-4	RCIA-211	9630	3 1/8	11 3/4	8 3/4	10	3 3/4	2 1/8	1 3/4	6 3/8	3 11/16	2 1/2	4 23/32	5/8	31.5
2 3/4		RPBA-212-4	RCIA-212														
2 15/16	75	RPBA-215-4	RCIA-215	42836	3 1/8	11 3/4	8 3/4	10	3 3/4	2 1/8	1 3/4	6 3/8	3 11/16	2 1/2	4 23/32	5/8	31.5
3		RPBA-215-4	RCIA-215														
3 3/16	80	RPBA-215-4	RCIA-215	42836	3 1/8	11 3/4	8 3/4	10	3 3/4	2 1/8	1 3/4	6 3/8	3 11/16	2 1/2	4 23/32	5/8	31.5
		RPBA-300-4	RCIA-300														
3 1/4	85	RPBA-80MM-4	RCI-80MM	15320	3 3/4	13 3/4	10 9/16	11 1/2	4 1/2	2 3/8	2 1/16	7 3/4	4 3/16	2 1/2	5 7/16	3/4	59.8
		RPBA-303-4	RCIA-303														
3 7/16	90	RPBA-304-4	RCIA-304	15320	3 3/4	13 3/4	10 9/16	11 1/2	4 1/2	2 3/8	2 1/16	7 3/4	4 3/16	2 1/2	5 7/16	3/4	59.8
3 1/2		RPBA-307-4	RCIA-307														
3 15/16	100	RPBA-308-4	RCIA-308	15320	3 3/4	13 3/4	10 9/16	11 1/2	4 1/2	2 3/8	2 1/16	7 3/4	4 3/16	2 1/2	5 7/16	3/4	59.8
		RPBA-90MM-4	RCI-90MM														
4	105	RPBA-95MM-4	RCI-95MM	15320	3 3/4	13 3/4	10 9/16	11 1/2	4 1/2	2 3/8	2 1/16	7 3/4	4 3/16	2 1/2	5 7/16	3/4	59.8
		RPBA-315-4	RCIA-315														
4 7/16	110	RPBA-400-4	RCIA-400	20980	4 1/4	15 1/4	11	13	4 1/2	2 1/4	2 7/16	8 5/8	5 1/4	3 1/8	5 15/16	3/4	76.9
		RPBA-407-4	RCIA-407														
4 1/2	115	RPBA-408-4	RCIA-408	20980	4 1/4	15 1/4	11	13	4 1/2	2 1/4	2 7/16	8 5/8	5 1/4	3 1/8	5 15/16	3/4	76.9
		RPBA-110MM-4	RCI-110MM														
4 15/16	120	RPBA-115MM-4	RCI-115MM	25750	4 3/4	16 1/2	11 3/4	13 7/8	4 5/8	2 1/2	2 7/8	9 5/8	5 1/2	3 3/8	6 13/32	3/4	95.6
		RPBA-407-4	RCIA-407														
5	125	RPBA-408-4	RCIA-408	25750	4 3/4	16 1/2	11 3/4	13 7/8	4 5/8	2 1/2	2 7/8	9 5/8	5 1/2	3 3/8	6 13/32	3/4	95.6
		RPBA-115MM-4	RCI-115MM														
5	125	RPBA-120MM-4	RCI-120MM	35520	5 1/2	18 1/2	13 1/2	15 7/8	5 1/8	2 3/4	3 1/8	11	6 13/64	3 5/8	7 13/32	7/8	143.6
		RPBA-125MM-4	RCI-125MM														
5	125	RPBA-415-4	RCIA-415	158001	5 1/2	18 1/2	13 1/2	15 7/8	5 1/8	2 3/4	3 1/8	11	6 13/64	3 5/8	7 13/32	7/8	143.6
		RPBA-500-4	RCIA-500														



- Rolling Elements:** Tapered Roller
- Housing:** Cast Iron Two Bolt Pillow Block
- Self Alignment:** +/- 3 Degrees
- Lock:** Setscrew, Double Collar
- Seal:** Felt
- Optional Seal:** Single Lip Contact
- Temperature:** -20°F to 220°F



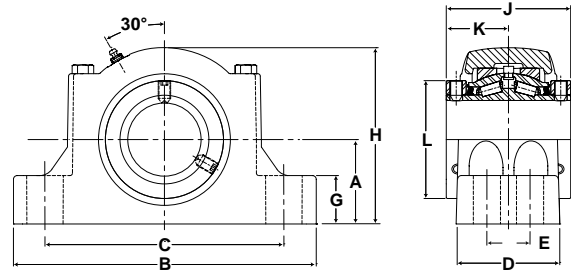
ERPB Expansion Series Two-Bolt Base Pillow Blocks

Bore Diameter		Part No.	Bearing Insert No.	Basic Dynamic Rating lb/N	Dimensions inch / mm										Unit Wt. lb/kg		
					A	B	C		D	G	H	J	K	L		Bolt Size	Total Expansion
inch	mm						Min.	Max.									
1 3/4	45	ERPB-112-2	ERCI-112	8070 35897	2 1/4 57.2	8 7/8 225.4	6 5/16 160.3	7 3/16 182.6	2 57/64 73.4	1 1/4 31.8	4 7/8 123.8	3 1/2 88.9	1 3/4 44.5	3 1/4 82.6	5/8	3/16 4.8	14.9 6.76
		ERPB-45MM-2	ERCI-45MM														
1 15/16	50	ERPB-115-2	ERCI-115	8070 35897	2 1/4 57.2	8 7/8 225.4	6 5/16 160.3	7 3/16 182.6	2 57/64 73.4	1 1/4 31.8	4 7/8 123.8	3 1/2 88.9	1 3/4 44.5	3 1/4 82.6	5/8	3/16 4.8	14.9 6.76
		ERPB-50MM-2	ERCI-50MM														
2	55	ERPB-200-2	ERCI-200	8570 38121	2 1/2 63.5	9 5/8 244.5	6 11/16 169.9	7 15/16 201.6	3 1/32 77.0	1 7/16 36.5	5 5/16 134.9	3 3/4 95.3	1 7/8 47.6	3 5/8 92.1	5/8	3/16 4.8	17.8 8.07
		ERPB-203-2	ERCI-203														
2 1/4	60	ERPB-204-2	ERCI-204	9030 40167	2 3/4 69.9	10 3/8 263.5	6 15/16 176.2	8 11/16 220.7	3 13/32 86.5	1 5/8 41.3	5 3/4 146.1	4 101.6	2 50.8	3 15/16 100.0	5/8	1/4 6.4	23.0 10.43
		ERPB-60MM-2	ERCI-60MM														
2 7/16	65	ERPB-207-2	ERCI-207	9030 40167	2 3/4 69.9	10 3/8 263.5	6 15/16 176.2	8 11/16 220.7	3 13/32 86.5	1 5/8 41.3	5 3/4 146.1	4 101.6	2 50.8	3 15/16 100.0	5/8	1/4 6.4	23.0 10.43
		ERPB-208-2	ERCI-208														
2 1/2	70	ERPB-65MM-2	ERCI-65MM	9630 42836	3 1/8 79.4	11 3/4 298.5	8 1/16 204.8	9 11/16 246.1	3 31/64 88.5	1 3/4 44.5	6 9/16 166.7	4 33/64 114.7	2 1/4 57.3	4 23/32 119.9	3/4	5/16 7.9	32.0 14.51
		ERPB-211-2	ERCI-211														
2 3/4	75	ERPB-212-2	ERCI-212	9630 42836	3 1/8 79.4	11 3/4 298.5	8 1/16 204.8	9 11/16 246.1	3 31/64 88.5	1 3/4 44.5	6 9/16 166.7	4 33/64 114.7	2 1/4 57.3	4 23/32 119.9	3/4	5/16 7.9	32.0 14.51
		ERPB-70MM-2	ERCI-70MM														
2 15/16	80	ERPB-215-2	ERCI-215	9630 42836	3 1/8 79.4	11 3/4 298.5	8 1/16 204.8	9 11/16 246.1	3 31/64 88.5	1 3/4 44.5	6 9/16 166.7	4 33/64 114.7	2 1/4 57.3	4 23/32 119.9	3/4	5/16 7.9	32.0 14.51
		ERPB-75MM-2	ERCI-75MM														
3	85	ERPB-300-2	ERCI-300	15320 68147	3 3/4 95.3	13 3/4 349.3	10 1/8 257.2	11 1/4 285.8	4 33/64 114.7	2 1/16 52.4	7 15/16 201.6	5 127.0	2 1/2 63.5	5 7/16 138.1	7/8	5/16 7.9	64.0 29.03
		ERPB-80MM-2	ERCI-80MM														
3 3/16	90	ERPB-303-2	ERCI-303	15320 68147	3 3/4 95.3	13 3/4 349.3	10 1/8 257.2	11 1/4 285.8	4 33/64 114.7	2 1/16 52.4	7 15/16 201.6	5 127.0	2 1/2 63.5	5 7/16 138.1	7/8	5/16 7.9	64.0 29.03
		ERPB-304-2	ERCI-304														
3 1/4	95	ERPB-85MM-2	ERCI-85MM	15320 68147	3 3/4 95.3	13 3/4 349.3	10 1/8 257.2	11 1/4 285.8	4 33/64 114.7	2 1/16 52.4	7 15/16 201.6	5 127.0	2 1/2 63.5	5 7/16 138.1	7/8	5/16 7.9	64.0 29.03
		ERPB-85MM-2	ERCI-85MM														
3 7/16	95	ERPB-307-2	ERCI-307	15320 68147	3 3/4 95.3	13 3/4 349.3	10 1/8 257.2	11 1/4 285.8	4 33/64 114.7	2 1/16 52.4	7 15/16 201.6	5 127.0	2 1/2 63.5	5 7/16 138.1	7/8	5/16 7.9	64.0 29.03
		ERPB-307-2	ERCI-307														
3 1/2	95	ERPB-308-2	ERCI-308	15320 68147	3 3/4 95.3	13 3/4 349.3	10 1/8 257.2	11 1/4 285.8	4 33/64 114.7	2 1/16 52.4	7 15/16 201.6	5 127.0	2 1/2 63.5	5 7/16 138.1	7/8	5/16 7.9	64.0 29.03
		ERPB-308-2	ERCI-308														
3 1/2	95	ERPB-90MM-2	ERCI-90MM	15320 68147	3 3/4 95.3	13 3/4 349.3	10 1/8 257.2	11 1/4 285.8	4 33/64 114.7	2 1/16 52.4	7 15/16 201.6	5 127.0	2 1/2 63.5	5 7/16 138.1	7/8	5/16 7.9	64.0 29.03
		ERPB-90MM-2	ERCI-90MM														
3 1/2	95	ERPB-95MM-2	ERCI-95MM	15320 68147	3 3/4 95.3	13 3/4 349.3	10 1/8 257.2	11 1/4 285.8	4 33/64 114.7	2 1/16 52.4	7 15/16 201.6	5 127.0	2 1/2 63.5	5 7/16 138.1	7/8	5/16 7.9	64.0 29.03
		ERPB-95MM-2	ERCI-95MM														

Metric dimensions for reference only.
Not all parts are available from stock.



- Rolling Elements:** Tapered Roller
- Housing:** Cast Iron Four Bolt Pillow Block
- Self Alignment:** +/- 3 Degrees
- Lock:** Setscrew, Double Collar
- Seal:** Felt
- Optional Seal:** Single Lip Contact
- Temperature:** -20°F to 220°F

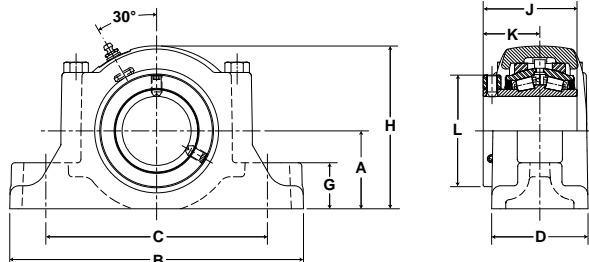


ERPB Expansion Series Four-Bolt Base Pillow Blocks

Bore Diameter		Part No.	Bearing Insert No.	Basic Dynamic Rating lb/N	Dimensions inch / mm											Bolt Size	Total Expansion	Unit Wt. lb/kg
					A	B	C		D	E	G	H	J	K	L			
inch	mm						Min.	Max.										
3 15/16 4	100	ERPB-315-4	ERCI-315	20980 93324	4 1/4 108.0	15 1/4 387.4	11 279.4	13 330.2	5 5/32 131.0	2 1/4 57.2	2 7/16 61.9	8 7/8 225.4	6 1/4 158.8	3 1/8 79.4	5 15/16 150.8	3/4	3/8 9.5	90.0 40.82
		ERPB-100MM-4	ERCI-100MM															
		ERPB-400-4	ERCI-400															
		ERPB-105MM-4	ERCI-105MM															
4 7/16 4 1/2	110	ERPB-110MM-4	ERCI-110MM	25750 114542	4 3/4 120.7	16 1/2 419.1	11 3/4 298.5	13 7/8 352.4	5 3/8 136.5	2 1/2 63.5	2 3/4 69.9	9 7/8 250.8	6 3/4 171.5	3 3/8 85.7	6 13/32 162.7	3/4	3/8 9.5	110.6 50.2
		ERPB-407-4	ERCI-407															
		ERPB-408-4	ERCI-408															
4 15/16 5	115	ERPB-115MM-4	ERCI-115MM	35520 158001	5 1/2 139.7	18 1/2 469.9	13 1/2 342.9	15 7/8 403.2	6 5/64 154.4	2 3/4 69.9	3 1/8 79.4	11 5/16 287.3	7 1/4 184.2	3 5/8 92.1	7 13/32 188.1	7/8	3/8 9.5	161.0 73.03
		ERPB-120MM-4	ERCI-120MM															
		ERPB-125MM-4	ERCI-125MM															
		ERPB-415-4	ERCI-415															
	ERPB-500-4	ERCI-500																



- Rolling Elements:** Tapered Roller
- Housing:** Cast Iron Two Bolt Pillow Block
- Self Alignment:** +/- 3 Degrees
- Lock:** Setscrew, Single Collar
- Seal:** Felt
- Optional Seal:** Single Lip Contact
- Temperature:** -20°F to 220°F



Mtd. Tapered Bearings



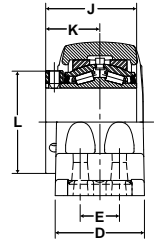
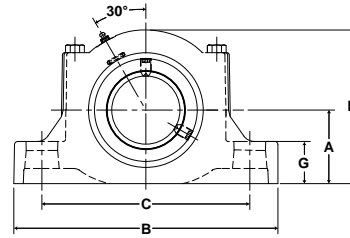
ERPBA Expansion Series Two-Bolt Base Pillow Blocks

Bore Diameter		Part No.	Bearing Insert No.	Basic Dynamic Rating lb/N	Dimensions inch / mm											Unit Wt. lb/kg	
					A	B	C		D	G	H	J	K	L	Bolt Size		Total Expansion
inch	mm						Min.	Max.									
1 3/4	45	ERPBA-112-2	ERCIA-112	8070 35897	2 1/4 57.2	8 7/8 225.4	6 5/16 160.3	7 3/16 182.6	2 57/64 73.4	1 1/4 31.8	4 7/8 123.8	2 61/64 75.0	1 13/64 30.6	3 1/4 82.6	5/8	3/16 4.8	14.9 6.76
		ERPBA-115-2	ERCIA-115														
2	50	ERPBA-200-2	ERCIA-200	8570 38121	2 1/2 63.5	9 5/8 244.5	6 11/16 169.9	7 15/16 201.6	3 1/32 77.0	1 7/16 36.5	5 5/16 134.9	3 1/8 79.4	1 1/4 31.8	3 5/8 92.1	5/8	3/16 4.8	17.8 8.07
		ERPBA-55MM-2	ERCI-55MM														
2 1/4	60	ERPBA-204-2	ERCIA-204	9030 40167	2 3/4 69.9	10 3/8 263.5	6 15/16 176.2	8 11/16 220.7	3 13/32 86.5	1 5/8 41.3	5 3/4 146.1	3 5/16 84.1	1 5/16 33.3	3 15/16 100.0	5/8	1/4 6.4	23.0 10.43
		ERPBA-207-2	ERCIA-207														
2 1/2	65	ERPBA-65MM-2	ERCI-65MM	9630 42836	3 1/8 79.4	11 3/4 298.5	8 1/16 204.8	9 11/16 246.1	3 31/64 88.5	1 3/4 44.5	6 9/16 166.7	3 11/16 93.7	1 7/16 36.5	4 23/32 119.9	3/4	5/16 7.9	32.0 14.51
		ERPBA-211-2	ERCIA-211														
2 3/4	70	ERPBA-70MM-2	ERCI-70MM	15320 68147	3 3/4 95.3	13 3/4 349.3	10 1/8 257.2	11 1/4 285.8	4 33/64 114.7	2 1/16 52.4	7 15/16 201.6	4 3/16 106.4	1 57/64 48.0	5 7/16 138.1	7/8	5/16 7.9	64.0 29.03
		ERPBA-215-2	ERCIA-215														
2 15/16	75	ERPBA-75MM-2	ERCI-75MM	15320 68147	3 3/4 95.3	13 3/4 349.3	10 1/8 257.2	11 1/4 285.8	4 33/64 114.7	2 1/16 52.4	7 15/16 201.6	4 3/16 106.4	1 57/64 48.0	5 7/16 138.1	7/8	5/16 7.9	64.0 29.03
		ERPBA-215-2	ERCIA-215														
3	80	ERPBA-80MM-2	ERCI-80MM	15320 68147	3 3/4 95.3	13 3/4 349.3	10 1/8 257.2	11 1/4 285.8	4 33/64 114.7	2 1/16 52.4	7 15/16 201.6	4 3/16 106.4	1 57/64 48.0	5 7/16 138.1	7/8	5/16 7.9	64.0 29.03
		ERPBA-303-2	ERCIA-303														
3 1/4	85	ERPBA-85MM-2	ERCI-85MM	15320 68147	3 3/4 95.3	13 3/4 349.3	10 1/8 257.2	11 1/4 285.8	4 33/64 114.7	2 1/16 52.4	7 15/16 201.6	4 3/16 106.4	1 57/64 48.0	5 7/16 138.1	7/8	5/16 7.9	64.0 29.03
		ERPBA-307-2	ERCIA-307														
3 7/16	90	ERPBA-90MM-2	ERCI-90MM	15320 68147	3 3/4 95.3	13 3/4 349.3	10 1/8 257.2	11 1/4 285.8	4 33/64 114.7	2 1/16 52.4	7 15/16 201.6	4 3/16 106.4	1 57/64 48.0	5 7/16 138.1	7/8	5/16 7.9	64.0 29.03
		ERPBA-308-2	ERCIA-308														
3 1/2	95	ERPBA-95MM-2	ERCI-95MM	15320 68147	3 3/4 95.3	13 3/4 349.3	10 1/8 257.2	11 1/4 285.8	4 33/64 114.7	2 1/16 52.4	7 15/16 201.6	4 3/16 106.4	1 57/64 48.0	5 7/16 138.1	7/8	5/16 7.9	64.0 29.03
		ERPBA-308-2	ERCIA-308														

Metric dimensions for reference only.
Not all parts are available from stock.



- Rolling Elements:** Tapered Roller
- Housing:** Cast Iron Four Bolt Pillow Block
- Self Alignment:** +/- 3 Degrees
- Lock:** Setscrew, Single Collar
- Seal:** Felt
- Optional Seal:** Single Lip Contact
- Temperature:** -20°F to 220°F

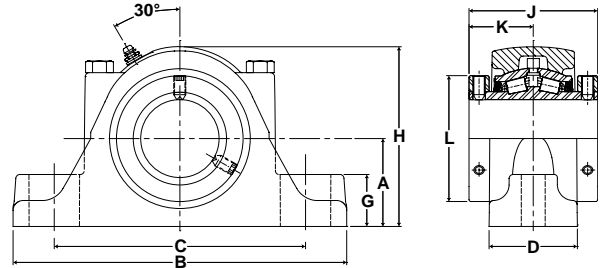


ERPBA Expansion Series Four-Bolt Base Pillow Blocks

Bore Diameter		Part No.	Bearing Insert No.	Basic Dynamic Rating lb/N	Dimensions inch / mm											Bolt Size	Total Expansion	Unit Wt. lb/kg
					A	B	C		D	E	G	H	J	K	L			
inch	mm						Min.	Max.										
3 15/16 4	100	ERPBA-315-4	ERCIA-315	20980 93324	4 1/4 108.0	15 1/4 387.4	11 279.4	13 330.2	5 5/32 131.0	2 1/4 57.2	2 7/16 61.9	8 7/8 225.4	5 1/4 133.4	2 1/8 54.0	5 15/16 150.8	3/4	3/8 9.5	90.0 40.82
		ERPBA-100MM-4	ERCI-100MM															
		ERPBA-400-4	ERCIA-400															
		ERPBA-105MM-4	ERCI-105MM															
4 7/16 4 1/2	110	ERPBA-110MM-4	ERCI-110MM	25750 114542	4 3/4 120.7	16 1/2 419.1	11 3/4 298.5	13 7/8 352.4	5 3/8 136.5	2 1/2 63.5	2 3/4 69.9	9 7/8 250.8	5 1/2 139.7	3 3/8 85.7	6 13/32 162.7	3/4	3/8 9.5	110.6 50.2
		ERPBA-407-4	ERCIA-407															
		ERPBA-408-4	ERCIA-408															
4 15/16 5	120	ERPBA-120MM-4	ERCI-120MM	35520 158001	5 1/2 139.7	18 1/2 469.9	13 1/2 342.9	15 7/8 403.2	6 5/64 154.4	2 3/4 69.9	3 1/8 79.4	11 5/16 287.3	6 13/64 157.6	2 37/64 90.9	7 13/32 188.1	7/8	3/8 9.5	161.0 73.03
		ERPBA-125MM-4	ERCI-125MM															
		ERPBA-415-4	ERCIA-415															
		ERPBA-500-4	ERCIA-500															



- Rolling Elements:** Tapered Roller
- Housing:** Cast Iron Two Bolt Pillow Block
- Self Alignment:** +/- 3 Degrees
- Lock:** Setscrew, Double Collar
- Seal:** Felt
- Optional Seal:** Single Lip Contact
- Temperature:** -20°F to 220°F



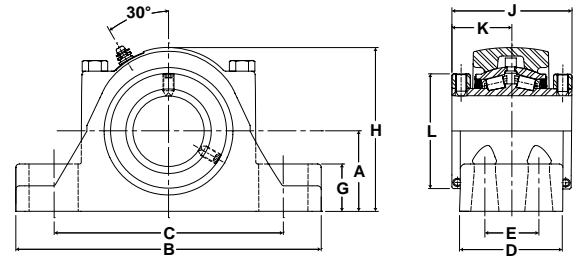
DRPB Series Two-Bolt Base Pillow Blocks

Bore Diameter		Part No.	Bearing Insert No.	Basic Dynamic Rating lb/N	Dimensions inch / mm										Unit Wt. lb/kg	
inch	mm				A	B	C		D	G	H	J	K	L		Bolt Size
						Min.	Max.									
1 3/4	45	DRPB-112-2	RCI-112	8070 35897	2 7/8 73.0	10 254.0	6 3/4 171.5	8 1/2 215.9	2 9/16 65.1	1 1/2 38.1	5 1/4 133.4	3 1/2 88.9	1 3/4 44.5	3 1/4 82.6	5/8	17.5 7.94
		DRPB-45MM-2	RCI-45MM													
1 15/16	50	DRPB-115-2	RCI-115	8070 35897	2 7/8 73.0	10 254.0	6 3/4 171.5	8 1/2 215.9	2 9/16 65.1	1 1/2 38.1	5 1/4 133.4	3 1/2 88.9	1 3/4 44.5	3 1/4 82.6	5/8	17.5 7.94
		DRPB-50MM-2	RCI-50MM													
2		DRPB-200-2	RCI-200													
2 3/16	55	DRPB-55MM-2	RCI-55MM	8570 38121	3 76.2	11 279.4	7 3/4 196.9	9 1/4 235.0	2 9/16 65.1	1 9/16 39.7	5 5/8 142.9	3 3/4 95.3	1 7/8 47.6	3 5/8 92.1	5/8	19.7 8.94
		DRPB-203-2	RCI-203													
2 1/4	60	DRPB-204-2	RCI-204	9030 40167	3 1/4 82.6	12 304.8	8 1/2 215.9	10 3/8 263.5	2 7/8 73.0	1 3/4 44.5	6 1/8 155.6	4 101.6	2 50.8	3 15/16 100.0	5/8	25.5 11.57
		DRPB-60MM-2	RCI-60MM													
2 7/16		DRPB-207-2	RCI-207													
2 1/2	65	DRPB-208-2	RCI-208	9030 40167	3 1/4 82.6	12 304.8	8 1/2 215.9	10 3/8 263.5	2 7/8 73.0	1 3/4 44.5	6 1/8 155.6	4 101.6	2 50.8	3 15/16 100.0	5/8	25.5 11.57
		DRPB-65MM-2	RCI-65MM													
2 11/16	70	DRPB-211-2	RCI-211	9630 42836	3 3/4 95.3	13 1/2 342.9	9 5/16 236.5	11 9/16 293.7	3 1/8 79.4	2 50.8	7 177.8	4 1/2 114.3	2 1/4 57.2	4 23/32 119.9	3/4	35.2 15.97
		DRPB-212-2	RCI-212													
2 15/16	75	DRPB-70MM-2	RCI-70MM													
		DRPB-215-2	RCI-215													
3		DRPB-75MM-2	RCI-75MM													
		DRPB-300-2	RCI-300													
3 3/16	80	DRPB-80MM-2	RCI-80MM	15320 68147	4 1/2 114.3	16 406.4	10 7/8 276.2	13 7/8 352.4	4 3/8 111.1	2 1/4 57.2	8 1/2 215.9	5 127.0	2 1/2 63.5	5 7/16 138.1	7/8	67.8 30.75
		DRPB-303-2	RCI-303													
3 1/4	85	DRPB-304-2	RCI-304													
		DRPB-85MM-2	RCI-85MM													
3 7/16		DRPB-307-2	RCI-307													
3 1/2	90	DRPB-308-2	RCI-308	15320 68147	4 1/2 114.3	16 406.4	10 7/8 276.2	13 7/8 352.4	4 3/8 111.1	2 1/4 57.2	8 1/2 215.9	5 127.0	2 1/2 63.5	5 7/16 138.1	7/8	67.8 30.75
		DRPB-90MM-2	RCI-90MM													
		DRPB-95MM-2	RCI-95MM													

Metric dimensions for reference only.
Not all parts are available from stock.



- Rolling Elements:** Tapered Roller
- Housing:** Cast Iron Four Bolt Pillow Block
- Self Alignment:** +/- 3 Degrees
- Lock:** Setscrew, Double Collar
- Seal:** Felt
- Optional Seal:** Single Lip Contact
- Temperature:** -20°F to 220°F

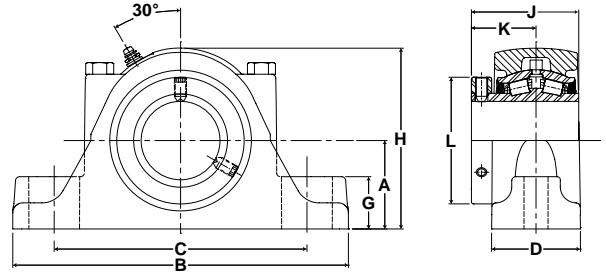


DRPB Series Four-Bolt Base Pillow Blocks

Bore Diameter		Part No.	Bearing Insert No.	Basic Dynamic Rating lb/N	Dimensions inch / mm											Unit Wt. lb/kg	
					A	B	C		D	E	G	H	J	K	L		Bolt Size
inch	mm						Min.	Max.									
3 15/16	100	DRPB-315-4	RCI-315														
		DRPB-100MM-4	RCI-100MM	20980	5	17 1/2	12	15	4 43/64	2	2 3/4	9 3/8	6 1/4	3 1/8	5 15/16	3/4	93.0
4	105	DRPB-400-4	RCI-400	93324	127.0	444.5	304.8	381.0	118.7	50.8	69.9	238.1	158.8	79.4	150.8		
		DRPB-105MM-4	RCI-105MM														



- Rolling Elements:** Tapered Roller
- Housing:** Cast Iron Two Bolt Pillow Block
- Self Alignment:** +/- 3 Degrees
- Lock:** Setscrew, Single Collar
- Seal:** Felt
- Optional Seal:** Single Lip Contact
- Temperature:** -20°F to 220°F



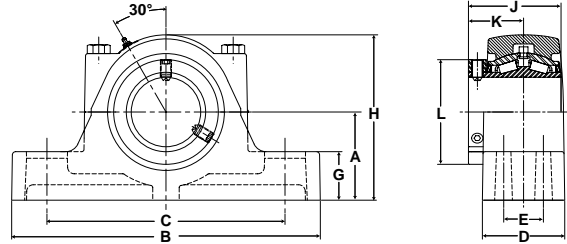
DRPBA Series Two-Bolt Base Pillow Blocks - Single Lock Collar

Bore Diameter		Part No.	Bearing Insert No.	Basic Dynamic Rating lb/N	Dimensions inch / mm										Unit Wt. lb/kg	
					A	B	C		D	G	H	J	K	L		Bolt Size
inch	mm						Min.	Max.								
1 3/4	45	DRPBA-112-2	RCIA-112	8070 35897	2 7/8 73.0	10 254.0	6 3/4 171.5	8 1/2 215.9	2 9/16 65.1	1 1/2 38.1	5 1/4 133.4	2 61/64 75.0	1 3/4 44.5	3 1/4 82.6	5/8	17.5 7.94
		DRPBA-45MM-2	RCI-45MM													
1 15/16	50	DRPBA-115-2	RCIA-115	8070 35897	2 7/8 73.0	10 254.0	6 3/4 171.5	8 1/2 215.9	2 9/16 65.1	1 1/2 38.1	5 1/4 133.4	2 61/64 75.0	1 3/4 44.5	3 1/4 82.6	5/8	17.5 7.94
		DRPBA-50MM-2	RCI-50MM													
2		DRPBA-200-2	RCIA-200													
2 3/16	55	DRPBA-55MM-2	RCI-55MM	8570	3	11	7 3/4	9 1/4	2 9/16	1 9/16	5 5/8	3 1/8	1 7/8	3 5/8	5/8	19.7 8.94
		DRPBA-203-2	RCIA-203	38121	76.2	279.4	196.9	235.0	65.1	39.7	142.9	79.4	47.6	92.1		
2 1/4	60	DRPBA-204-2	RCIA-204	9030 40167	3 1/4 82.6	12 304.8	8 1/2 215.9	10 3/8 263.5	2 7/8 73.0	1 3/4 44.5	6 1/8 155.6	3 5/16 84.1	2 50.8	3 15/16 100.0	5/8	25.5 11.57
		DRPBA-60MM-2	RCI-60MM													
2 7/16		DRPBA-207-2	RCIA-207													
2 1/2	65	DRPBA-208-2	RCIA-208	9030 40167	3 1/4 82.6	12 304.8	8 1/2 215.9	10 3/8 263.5	2 7/8 73.0	1 3/4 44.5	6 1/8 155.6	3 5/16 84.1	2 50.8	3 15/16 100.0	5/8	25.5 11.57
		DRPBA-65MM-2	RCI-65MM													
2 11/16	70	DRPBA-211-2	RCIA-211	9630 42836	3 3/4 95.3	13 1/2 342.9	9 5/16 236.5	11 9/16 293.7	3 1/8 79.4	2 50.8	7 177.8	3 11/16 93.7	2 1/4 57.2	4 23/32 119.9	3/4	35.2 15.97
		DRPBA-212-2	RCIA-212													
2 15/16		DRPBA-70MM-2	RCI-70MM													
3	75	DRPBA-215-2	RCIA-215	9630 42836	3 3/4 95.3	13 1/2 342.9	9 5/16 236.5	11 9/16 293.7	3 1/8 79.4	2 50.8	7 177.8	3 11/16 93.7	2 1/4 57.2	4 23/32 119.9	3/4	35.2 15.97
		DRPBA-75MM-2	RCI-75MM													
3	80	DRPBA-300-2	RCIA-300													
		DRPBA-80MM-2	RCI-80MM													
3 3/16	85	DRPBA-303-2	RCIA-303	15320 68147	4 1/2 114.3	16 406.4	10 7/8 276.2	13 7/8 352.4	4 3/8 111.1	2 1/4 57.2	8 1/2 215.9	4 3/16 106.4	2 1/2 63.5	5 7/16 138.1	7/8	67.8 30.75
		DRPBA-304-2	RCIA-304													
3 1/4		DRPBA-85MM-2	RCI-85MM													
3 7/16	90	DRPBA-307-2	RCIA-307	15320 68147	4 1/2 114.3	16 406.4	10 7/8 276.2	13 7/8 352.4	4 3/8 111.1	2 1/4 57.2	8 1/2 215.9	4 3/16 106.4	2 1/2 63.5	5 7/16 138.1	7/8	67.8 30.75
		DRPBA-307-2	RCIA-307													
3 1/2	95	DRPBA-308-2	RCIA-308	15320 68147	4 1/2 114.3	16 406.4	10 7/8 276.2	13 7/8 352.4	4 3/8 111.1	2 1/4 57.2	8 1/2 215.9	4 3/16 106.4	2 1/2 63.5	5 7/16 138.1	7/8	67.8 30.75
		DRPBA-90MM-2	RCI-90MM													
		DRPBA-95MM-2	RCI-95MM													

Metric dimensions for reference only.
Not all parts are available from stock.



- Rolling Elements:** Tapered Roller
- Housing:** Cast Iron Four Bolt Pillow Block
- Self Alignment:** +/- 3 Degrees
- Lock:** Setscrew, Single Collar
- Seal:** Felt
- Optional Seal:** Single Lip Contact
- Temperature:** -20°F to 220°F

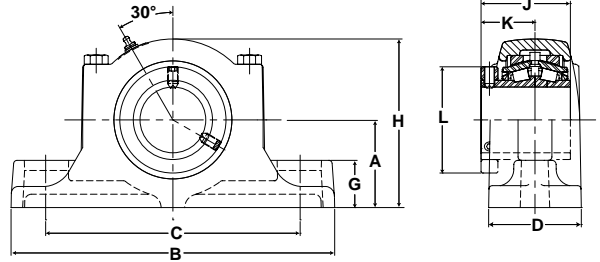


DRPBA Series Four-Bolt Base Pillow Blocks - Single Lock Collar

Bore Diameter		Part No.	Bearing Insert No.	Basic Dynamic Rating lb/N	Dimensions inch / mm											Unit Wt. lb/kg	
inch	mm				A	B	C		D	E	G	H	J	K	L		Bolt Size
						Min.	Max.										
3 15/16	100	DRPBA-315-4	RCIA-315	20980	5	17 1/2	12	15	4 43/64	2	2 3/4	9 3/8	5 1/4	3 1/8	5 15/16	3/4	93.0
		DRPBA-100MM-4	RCI-100MM														
4	105	DRPBA-400-4	RCIA-400	93324	127.0	444.5	304.8	381.0	118.7	50.8	69.9	238.1	133.4	79.4	150.8	3/4	42.2
		DRPBA-105MM-4	RCI-105MM														



- Rolling Elements:** Tapered Roller
- Housing:** Cast Iron Two Bolt Pillow Block
- Self Alignment:** +/- 3 Degrees
- Lock:** Setscrew, Single Collar
- Seal:** Felt
- Optional Seal:** Single Lip Contact
- Temperature:** -20°F to 220°F



Mtd. Tapered Bearings



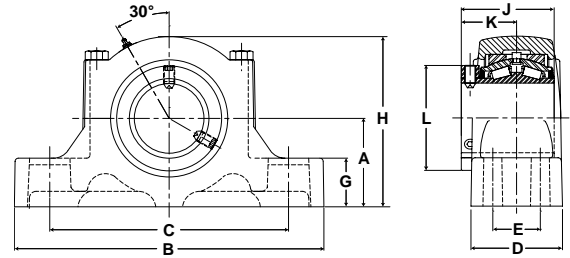
EDPBA Expansion Series Two-Bolt Base Pillow Blocks - Single Lock Collar

Bore Diameter		Part No.	Bearing Insert No.	Basic Dynamic Rating lb/N	Dimensions inch / mm										Unit Wt. lb/kg		
					A	B	C		D	G	H	J	K	L		Bolt Size	Total Expansion
inch	mm						Min.	Max.									
1 3/4	45	EDPBA-112-2	ERCIA-112	8070 35897	2 7/8 73.0	10 254.0	6 3/4 171.5	8 1/2 215.9	2 29/32 73.8	1 1/2 38.1	5 1/2 139.7	2 61/64 75.0	1 3/4 44.5	3 1/4 82.6	5/8	3/16 4.8	19.2 8.72
		EDPBA-45MM-2	ERCI-45MM														
1 15/16	50	EDPBA-115-2	ERCIA-115	8070 35897	2 7/8 73.0	10 254.0	6 3/4 171.5	8 1/2 215.9	2 29/32 73.8	1 1/2 38.1	5 1/2 139.7	2 61/64 75.0	1 3/4 44.5	3 1/4 82.6	5/8	3/16 4.8	19.2 8.72
		EDPBA-50MM-2	ERCI-50MM														
2		EDPBA-200-2	ERCIA-200														
2 3/16	55	EDPBA-55MM-2	ERCI-55MM	8570 38121	3 76.2	11 279.4	7 3/4 196.9	9 1/4 235.0	3 1/32 77.0	1 9/16 39.7	5 13/16 147.6	3 1/8 79.4	1 7/8 47.6	3 5/8 92.1	5/8	3/16 4.8	21.8 9.89
		EDPBA-203-2	ERCIA-203														
2 1/4	60	EDPBA-204-2	ERCIA-204	9030 40167	3 1/4 82.6	12 304.8	8 1/2 215.9	10 3/8 263.5	3 7/16 87.3	1 3/4 44.5	6 1/4 158.8	3 5/16 84.1	2 50.8	3 15/16 100.0	5/8	1/4 6.4	27.8 12.61
		EDPBA-60MM-2	ERCI-60MM														
2 7/16		EDPBA-207-2	ERCIA-207														
2 1/2		EDPBA-208-2	ERCIA-208														
2 11/16	70	EDPBA-211-2	ERCIA-211	9630 42836	3 3/4 95.3	13 1/2 342.9	9 5/16 236.5	11 9/16 293.7	3 1/2 88.9	2 50.8	7 3/16 182.6	3 11/16 93.7	2 1/4 57.2	4 23/32 119.9	3/4	5/16 7.9	38.0 17.24
		EDPBA-212-2	ERCIA-212														
2 15/16		EDPBA-70MM-2	ERCI-70MM														
3	75	EDPBA-215-2	ERCIA-215	9630 42836	3 3/4 95.3	13 1/2 342.9	9 5/16 236.5	11 9/16 293.7	3 1/2 88.9	2 50.8	7 3/16 182.6	3 11/16 93.7	2 1/4 57.2	4 23/32 119.9	3/4	5/16 7.9	38.0 17.24
		EDPBA-75MM-2	ERCI-75MM														
3 3/16	80	EDPBA-300-2	ERCIA-300	15320 68147	4 1/2 114.3	16 406.4	10 7/8 276.2	13 7/8 352.4	4 1/2 114.3	2 1/4 57.2	8 11/16 220.7	4 3/16 106.4	2 1/2 63.5	5 7/16 138.1	7/8	5/16 7.9	75.8 34.38
		EDPBA-211-2	ERCIA-211														
3 1/4	85	EDPBA-303-2	ERCIA-303	15320 68147	4 1/2 114.3	16 406.4	10 7/8 276.2	13 7/8 352.4	4 1/2 114.3	2 1/4 57.2	8 11/16 220.7	4 3/16 106.4	2 1/2 63.5	5 7/16 138.1	7/8	5/16 7.9	75.8 34.38
		EDPBA-304-2	ERCIA-304														
3 7/16		EDPBA-85MM-2	ERCI-85MM														
3 1/2	90	EDPBA-307-2	ERCIA-307	15320 68147	4 1/2 114.3	16 406.4	10 7/8 276.2	13 7/8 352.4	4 1/2 114.3	2 1/4 57.2	8 11/16 220.7	4 3/16 106.4	2 1/2 63.5	5 7/16 138.1	7/8	5/16 7.9	75.8 34.38
		EDPBA-308-2	ERCIA-308														
3 1/2	95	EDPBA-90MM-2	ERCI-90MM														
		EDPBA-95MM-2	ERCI-95MM														

Metric dimensions for reference only.
Not all parts are available from stock.



- Rolling Elements:** Tapered Roller
- Housing:** Cast Iron Four Bolt Pillow Block
- Self Alignment:** +/- 3 Degrees
- Lock:** Setscrew, Single Collar
- Seal:** Felt
- Optional Seal:** Single Lip Contact
- Temperature:** -20°F to 220°F

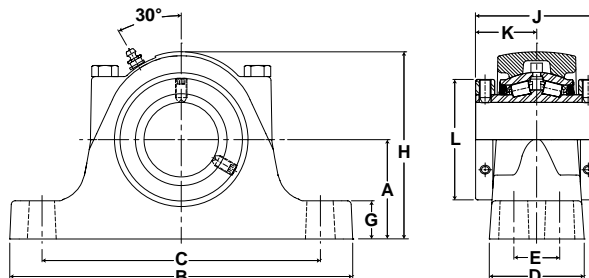


EDPBA Expansion Series Four-Bolt Base Pillow Blocks - Single Lock Collar

Bore Diameter		Part No.	Bearing Insert No.	Basic Dynamic Rating lb/N	Dimensions inch / mm											Unit Wt. lb/kg		
inch	mm				A	B	C		D	E	G	H	J	K	L		Bolt Size	Total Expansion
						Min.	Max.											
3 15/16	100	EDPBA-315-4	ERCIA-315	20980	5	17 1/2	12	15	5 3/16	2	2 3/4	9 5/8	5 1/4	3 3/25	5 15/16	3/4	3/8	106.0
		EDPBA-100MM-4	ERCI-100MM															
4	105	EDPBA-400-4	ERCIA-400	20980	5	17 1/2	12	15	5 3/16	2	2 3/4	9 5/8	5 1/4	3 3/25	5 15/16	3/4	3/8	106.0
		EDPBA-105MM-4	ERCI-105MM															



- Rolling Elements:** Tapered Roller
- Housing:** Cast Iron Four Bolt Pillow Block
- Self Alignment:** +/- 3 Degrees
- Lock:** Setscrew, Double Collar
- Seal:** Felt
- Optional Seal:** Single Lip Contact
- Temperature:** -20°F to 220°F



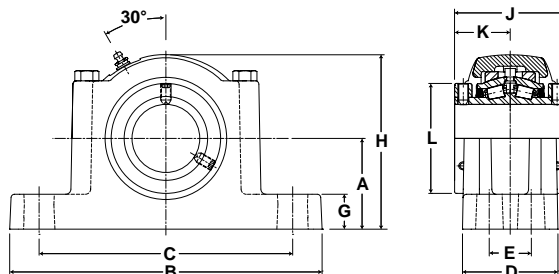
RPBXT Series Four-Bolt Base Pillow Blocks - SAF Mounting Dimensions

Bore Diameter		Part No.	Bearing Insert No.	Basic Dynamic Rating lb/N	Dimensions inch / mm											Unit Wt. lb/kg	
					A	B	C		D	E	G	H	J	K	L		Bolt Size
inch	mm						Min.	Max.									
2 1/4	60	RPBXT-204-4	RCI-204	9030 40167	3 1/4 82.6	11 1/4 285.8	8 5/8 219.1	9 5/8 244.5	3 1/8 79.4	1 7/8 47.6	1 1/4 31.8	6 1/8 155.6	4 101.6	2 50.8	3 15/16 100.0	1/2	25.5 11.57
		RPBXT-60MM-4	RCI-60MM														
2 7/16	65	RPBXT-207-4	RCI-207	9630 42836	3 3/4 95.3	13 330.2	10 254.0	11 279.4	3 1/2 88.9	2 1/8 54.0	1 1/2 38.1	7 177.8	4 1/2 114.3	2 1/4 57.2	4 23/32 119.9	5/8	36.2 16.42
		RPBXT-208-4	RCI-208														
2 1/2	70	RPBXT-211-4	RCI-211	15320 68147	4 1/2 114.3	15 1/4 387.4	11 3/4 298.5	12 3/4 323.9	4 3/8 111.1	2 3/8 60.3	1 3/4 44.5	8 1/2 215.9	5 127.0	2 1/2 63.5	5 7/16 138.1	3/4	67.8 30.75
		RPBXT-212-4	RCI-212														
2 15/16	75	RPBXT-215-4	RCI-215	20980 93324	4 15/16 125.4	16 1/2 419.1	12 7/8 327.0	14 1/8 358.8	4 3/4 120.7	2 3/4 69.9	2 50.8	9 5/16 236.5	6 1/4 158.8	3 1/8 79.4	5 15/16 150.8	3/4	93 42.18
		RPBXT-215-4	RCI-215														
3	80	RPBXT-300-4	RCI-300	25750 114542	6 152.4	18 3/8 466.7	14 1/2 368.3	16 406.4	5 1/4 133.4	3 1/4 82.6	2 1/2 63.5	10 7/8 276.2	6 3/4 171.5	3 3/8 85.7	6 13/32 162.7	7/8	114.7 52.03
		RPBXT-303-4	RCI-303														
3 3/16	85	RPBXT-304-4	RCI-304	35520 158001	6 152.4	20 1/8 511.2	15 5/8 396.9	17 3/8 441.3	6 152.4	3 3/8 85.7	2 1/2 63.5	11 1/2 292.1	7 1/4 184.2	3 5/8 92.1	7 13/32 188.1	1	172.4 78.20
		RPBXT-307-4	RCI-307														
3 1/4	90	RPBXT-308-4	RCI-308	20980 93324	4 15/16 125.4	16 1/2 419.1	12 7/8 327.0	14 1/8 358.8	4 3/4 120.7	2 3/4 69.9	2 50.8	9 5/16 236.5	6 1/4 158.8	3 1/8 79.4	5 15/16 150.8	3/4	93 42.18
		RPBXT-304-4	RCI-304														
3 7/16	95	RPBXT-315-4	RCI-315	25750 114542	6 152.4	18 3/8 466.7	14 1/2 368.3	16 406.4	5 1/4 133.4	3 1/4 82.6	2 1/2 63.5	10 7/8 276.2	6 3/4 171.5	3 3/8 85.7	6 13/32 162.7	7/8	114.7 52.03
		RPBXT-308-4	RCI-308														
3 1/2	100	RPBXT-407-4	RCI-407	35520 158001	6 152.4	20 1/8 511.2	15 5/8 396.9	17 3/8 441.3	6 152.4	3 3/8 85.7	2 1/2 63.5	11 1/2 292.1	7 1/4 184.2	3 5/8 92.1	7 13/32 188.1	1	172.4 78.20
		RPBXT-304-4	RCI-400														
4	105	RPBXT-408-4	RCI-408	25750 114542	6 152.4	18 3/8 466.7	14 1/2 368.3	16 406.4	5 1/4 133.4	3 1/4 82.6	2 1/2 63.5	10 7/8 276.2	6 3/4 171.5	3 3/8 85.7	6 13/32 162.7	7/8	114.7 52.03
		RPBXT-105MM-4	RCI-105MM														
4 7/16	110	RPBXT-110MM-4	RCI-110MM	35520 158001	6 152.4	20 1/8 511.2	15 5/8 396.9	17 3/8 441.3	6 152.4	3 3/8 85.7	2 1/2 63.5	11 1/2 292.1	7 1/4 184.2	3 5/8 92.1	7 13/32 188.1	1	172.4 78.20
		RPBXT-407-4	RCI-407														
4 1/2	115	RPBXT-115MM-4	RCI-115MM	35520 158001	6 152.4	20 1/8 511.2	15 5/8 396.9	17 3/8 441.3	6 152.4	3 3/8 85.7	2 1/2 63.5	11 1/2 292.1	7 1/4 184.2	3 5/8 92.1	7 13/32 188.1	1	172.4 78.20
		RPBXT-408-4	RCI-408														
4 15/16	120	RPBXT-120MM-4	RCI-120MM	35520 158001	6 152.4	20 1/8 511.2	15 5/8 396.9	17 3/8 441.3	6 152.4	3 3/8 85.7	2 1/2 63.5	11 1/2 292.1	7 1/4 184.2	3 5/8 92.1	7 13/32 188.1	1	172.4 78.20
		RPBXT-125MM-4	RCI-125MM														
5	125	RPBXT-415-4	RCI-415	35520 158001	6 152.4	20 1/8 511.2	15 5/8 396.9	17 3/8 441.3	6 152.4	3 3/8 85.7	2 1/2 63.5	11 1/2 292.1	7 1/4 184.2	3 5/8 92.1	7 13/32 188.1	1	172.4 78.20
		RPBXT-500-4	RCI-500														

Metric dimensions for reference only.
Not all parts are available from stock



- Rolling Elements:** Tapered Roller
- Housing:** Cast Iron Four Bolt Pillow Block
- Self Alignment:** +/- 3 Degrees
- Lock:** Setscrew, Double Collar
- Seal:** Felt
- Optional Seal:** Single Lip Contact
- Temperature:** -20°F to 220°F

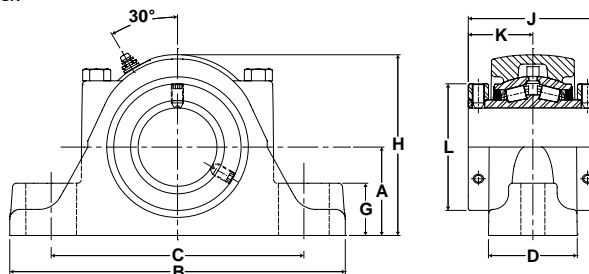


ERPBXT Expansion Series Four-Bolt Base Pillow Blocks - SAF Mounting Dimensions

Bore Diameter		Part No.	Bearing Insert No.	Basic Dynamic Rating lb/N	Dimensions inch / mm											Bolt Size	Total Expansion	Unit Wt. lb/kg
					A	B	C		D	E	G	H	J	K	L			
inch	mm						Min.	Max.										
2 1/4	60	ERPBXT-204-4	ERCI-204	9030 40167	3 1/4 82.6	11 1/4 285.8	8 5/8 219.1	9 5/8 244.5	3 27/64 86.9	1 7/8 47.6	1 1/4 31.8	6 1/4 158.8	4 101.6	2 50.8	3 15/16 100.0	1/2	1/4 6.35	27.7 12.56
		ERPBXT-60MM-4	ERCI-60MM															
2 7/16		ERPBXT-207-4	ERCI-207															
2 1/2		ERPBXT-208-4	ERCI-208															
	65	ERPBXT-65MM-4	ERCI-65MM															
2 11/16		ERPBXT-211-4	ERCI-211															
2 3/4		ERPBXT-212-4	ERCI-212															
	70	ERPBXT-70MM-4	ERCI-70MM	9630 42836	3 3/4 95.3	13 330.2	10 254.0	11 279.4	3 1/2 88.9	2 1/8 54.0	1 1/2 38.1	7 3/16 182.6	4 1/2 114.3	2 1/4 57.2	4 23/32 119.9	5/8	5/16 7.94	39.0 17.69
2 15/16		ERPBXT-215-4	ERCI-215															
	75	ERPBXT-75MM-4	ERCI-75MM															
3		ERPBXT-300-4	ERCI-300															
	80	ERPBXT-80MM-4	ERCI-80MM															
3 3/16		EPRBXT-303-4	ERCI-303															
3 1/4		ERPBXT-304-4	ERCI-304															
	85	ERPBXT-85MM-4	ERCI-85MM	15320 68147	4 1/2 114.3	15 1/4 387.4	11 3/4 298.5	12 3/4 323.9	4 1/2 114.3	2 3/8 60.3	1 3/4 44.5	8 11/16 220.7	5 127.0	2 1/2 63.5	5 7/16 138.1	3/4	5/16 7.94	75.3 34.16
3 7/16		ERPBXT-307-4	ERCI-307															
3 1/2		ERPBXT-308-4	ERCI-308															
	90	ERPBXT-90MM-4	ERCI-90MM															
	95	ERPBXT-95MM-4	ERCI-95MM															
3 15/16		ERPBXT-315-4	ERCI-315															
	100	ERPBXT-100MM-4	ERCI-100MM	20980 93324	4 15/16 125.4	16 1/2 419.1	12 7/8 327.0	14 1/8 358.8	5 3/16 131.8	2 3/4 69.9	2 50.8	9 9/16 242.9	6 1/4 158.8	3 1/8 79.4	5 15/16 150.8	3/4	3/8 9.84	106.0 48.08
4		ERPBXT-400-4	ERCI-400															
	105	ERPBXT-105MM-4	ERCI-105MM															
	110	ERPBXT-110MM-4	ERCI-110MM															
4 7/16		ERPBXT-407-4	ERCI-407	25750 114542	6 152.4	18 3/8 466.7	14 1/2 368.3	16 406.4	5 13/32 137.3	3 1/4 82.6	2 1/2 63.5	11 1/8 282.6	6 3/4 171.5	3 3/8 85.7	6 13/32 162.7	7/8	3/8 9.84	104.0 47.17
4 1/2		ERPBXT-408-4	ERCI-408															
	115	ERPBXT-115MM-4	ERCI-115MM															
	120	ERPBXT-120MM-4	ERCI-120MM															
	125	ERPBXT-125MM-4	ERCI-125MM	35520 158001	6 152.4	20 1/8 511.2	15 5/8 396.9	17 3/8 441.3	6 3/32 154.8	3 3/8 85.7	2 1/2 63.5	11 13/16 300.0	7 1/4 184.2	3 5/8 92.1	7 13/32 188.1	1	3/8 9.84	190.0 86.18
4 15/16		ERPBXT-415-4	ERCI-415															
5		ERPBXT-500-4	ERCI-500															



- Rolling Elements:** Tapered Roller
- Housing:** Cast Steel Two Bolt Pillow Block
- Self Alignment:** +/- 3 Degrees
- Lock:** Setscrew, Double Collar
- Seal:** Felt
- Optional Seal:** Single Lip Contact
- Temperature:** -20°F to 220°F



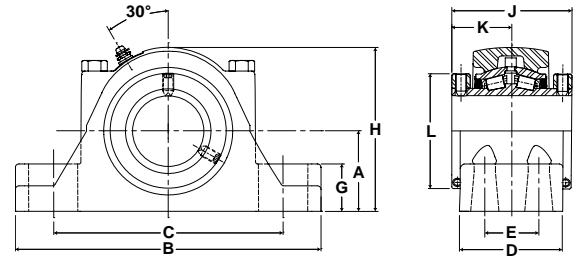
SPB Series Two-Bolt Base Pillow Blocks - Cast Steel Housing

Bore Diameter		Part No.	Bearing Insert No.	Basic Dynamic Rating lb/N	Dimensions inch / mm										Unit Wt. lb/kg												
inch	mm				A	B	C		D	G	H	J	K	L		Bolt Size											
						Min.	Max.																				
1 1/2	40	SPB-108-2	RCI-108	6140	2 1/8	7 3/4	5 9/16	6 7/16	2 5/16	1 1/4	4 3/8	3 3/8	1 11/16	2 7/8	1/2	12.0											
		SPB-40MM-2	RCI-40MM														27312	54.0	196.9	141.3	163.5	58.7	31.8	111.1	85.7	42.9	73.0
		SPB-110-2	RCI-110														SPB-111-2	RCI-111									
1 3/4	45	SPB-112-2	RCI-112	8070	2 1/4	8 7/8	6 5/16	7 3/16	2 7/16	1 1/4	4 5/8	3 1/2	1 3/4	3 1/4	5/8	14.5											
1 15/16		SPB-45MM-2	RCI-45MM														35897	57.2	225.4	160.3	182.6	61.9	31.8	117.5	88.9	44.5	82.6
SPB-115-2		RCI-115	SPB-50MM-2														RCI-50MM										
2	50	SPB-200-2	RCI-200																								
2 3/16	55	SPB-55MM-2	RCI-55MM	8570	2 1/2	9 5/8	6 11/16	7 15/16	2 9/16	1 7/16	5 1/8	3 3/4	1 7/8	3 5/8	5/8	17.3											
		SPB-203-2	RCI-203														38121	63.5	244.5	169.9	201.6	65.1	36.5	130.2	95.3	47.6	92.1
2 1/4	60	SPB-204-2	RCI-204	9030	2 3/4	10 3/8	6 15/16	8 11/16	2 3/4	1 5/8	5 5/8	4	2	3 15/16	5/8	22.8											
2 7/16		SPB-60MM-2	RCI-60MM														40167	69.9	263.5	176.2	220.7	69.9	41.3	142.9	101.6	50.8	100.0
2 1/2		SPB-207-2	RCI-207														SPB-208-2	RCI-208									
		65	SPB-65MM-2														RCI-65MM										
2 11/16	70	SPB-211-2	RCI-211	9630	3 1/8	11 3/4	8 1/16	9 11/16	3	1 3/4	6 3/8	4 1/2	2 1/4	4 23/32	3/4	32.2											
2 3/4		SPB-212-2	RCI-212														42836	79.4	298.5	204.8	246.1	76.2	44.5	161.9	114.3	57.2	119.9
2 15/16		SPB-70MM-2	RCI-70MM														SPB-215-2	RCI-215									
		75	SPB-75MM-2														RCI-75MM										
		3	SPB-300-2														RCI-300										
3 3/16	80	SPB-80MM-2	RCI-80MM	15320	3 3/4	13 3/4	10 1/8	11 1/4	4 1/8	2 1/16	7 3/4	5	2 1/2	5 7/16	7/8	65.6											
3 1/4		SPB-303-2	RCI-303														68147	95.3	349.3	257.2	285.8	104.8	52.4	196.9	127.0	63.5	138.1
		SPB-304-2	RCI-304														SPB-85MM-2	RCI-85MM									
		3 7/16	SPB-307-2														RCI-307	SPB-308-2	RCI-308								
3 1/2		90	SPB-90MM-2														RCI-90MM										
		95	SPB-95MM-2														RCI-95MM										

Metric dimensions for reference only.
Not all parts are available from stock.



- Rolling Elements:** Tapered Roller
- Housing:** Cast Steel Four Bolt Pillow Block
- Self Alignment:** +/- 3 Degrees
- Lock:** Setscrew, Double Collar
- Seal:** Felt
- Optional Seal:** Single Lip Contact
- Temperature:** -20°F to 220°F



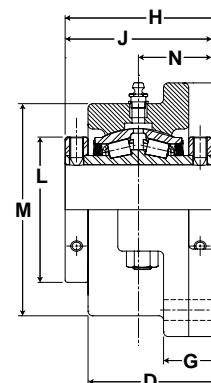
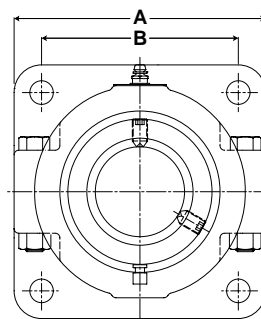
SPB Series Four-Bolt Base Pillow Blocks - Cast Steel Housing

Bore Diameter		Part No.	Bearing Insert No.	Basic Dynamic Rating lb/N	Dimensions inch / mm											Unit Wt. lb/kg	
					A	B	C		D	E	G	H	J	K	L		Bolt Size
inch	mm						Min.	Max.									
3 15/16 4	100	SPB-315-4	RCI-315	20980 93324	4 1/4 108.0	15 1/4 387.4	11 279.4	13 330.2	4 1/2 114.3	2 1/4 57.2	2 7/16 61.9	8 5/8 219.1	6 1/4 158.8	3 1/8 79.4	5 15/16 150.8	3/4	84.6 38.37
		SPB-100MM-4	RCI-100MM														
		SPB-400-4	RCI-400														
		SPB-105MM-4	RCI-105MM														
4 7/16 4 1/2	110	SPB-110MM-4	RCI-110MM	25750 114542	4 3/4 120.7	16 1/2 419.1	11 3/4 298.5	13 7/8 352.4	4 5/8 117.5	2 1/4 57.2	2 3/4 69.9	9 5/8 244.5	6 3/4 171.5	3 3/8 85.7	6 13/32 162.7	3/4	105.2 47.7
		SPB-407-4	RCI-407														
		SPB-408-4	RCI-408														
		SPB-115MM-4	RCI-115MM														
4 15/16 5	120	SPB-120MM-4	RCI-120MM	35520 158001	5 1/2 139.7	18 1/2 469.9	13 1/2 342.9	15 7/8 403.2	5 1/8 130.2	2 3/4 69.9	3 1/8 79.4	11 279.4	7 1/4 184.2	3 5/8 92.1	7 13/32 188.1	7/8	158.0 71.67
		SPB-125MM-4	RCI-125MM														
		SPB-415-4	RCI-415														
		SPB-500-4	RCI-500														

SEALMASTER® RPB Bearings



- Rolling Elements:** Tapered Roller
- Housing:** Cast Iron Four Bolt Flange
- Self Alignment:** +/- 3 Degrees
- Lock:** Setscrew, Double Collar
- Seal:** Felt
- Optional Seal:** Single Lip Contact
- Temperature:** -20°F to 220°F



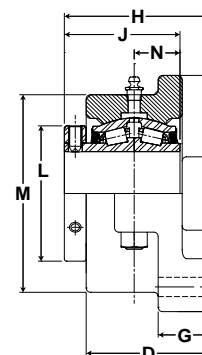
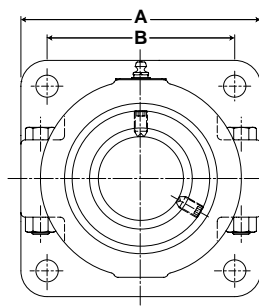
RFB Series Four-Bolt Flange Units

Bore Diameter		Part No.	Bearing Insert No.	Basic Dynamic Rating lb/N	Dimensions inch / mm										Unit Wt. lb/kg	
inch	mm				A	B	B.C.	D	G	H	J	L	M	N		Bolt Size
1 3/16		RFB-103	RCI-103	2975	4	2 7/8	4 1/16	2 5/16	1	2 13/16	2 25/32	2 1/4	3 1/4	1 25/64	3/8	6.0
1 1/4		RFB-104	RCI-104	13233	101.6	73.0	103.2	58.7	25.4	71.4	70.6	57.2	82.6	35.3		2.72
1 3/8	35	RFB-106	RCI-106	4760	4 5/8	3 1/2	4 61/64	2 9/16	1	3 1/16	3	2 5/8	3 3/4	1 1/2	1/2	8.1
1 7/16		RFB-35MM	RCI-35MM	21174	117.5	88.9	125.8	65.1	25.4	77.8	76.2	66.7	95.3	38.1		3.67
1 1/2	40	RFB-108	RCI-108	6140	5 3/8	4 1/8	5 53/64	2 15/16	1 3/16	3 1/2	3 3/8	2 7/8	4 1/2	1 11/16	1/2	12.3
1 5/8		RFB-40MM	RCI-40MM	27312	136.5	104.8	148.0	74.6	30.2	88.9	85.7	73.0	114.3	42.9		5.58
1 11/16		RFB-110	RCI-110													
		RFB-111	RCI-111													
1 3/4	45	RFB-112	RCI-112	8070	5 5/8	4 3/8	6 3/16	3 1/16	1 3/16	3 5/8	3 1/2	3 1/4	4 3/4	1 3/4	1/2	14.5
1 15/16		RFB-45MM	RCI-45MM	35897	142.9	111.1	157.2	77.8	30.2	92.1	88.9	82.6	120.7	44.5		6.58
	50	RFB-115	RCI-115													
		RFB-50MM	RCI-50MM													
		RFB-200	RCI-200													
2 3/16	55	RFB-55MM	RCI-55MM	8570	6 1/4	4 7/8	6 57/64	3 1/4	1 3/8	3 7/8	3 3/4	3 5/8	5 1/4	1 7/8	5/8	19.0
		RFB-203	RCI-203	38121	158.8	123.8	175.0	82.6	34.9	98.4	95.3	92.1	133.4	47.6		8.62
2 1/4	60	RFB-204	RCI-204	9030	6 7/8	5 3/8	7 39/64	3 9/16	1 1/2	4 3/16	4	3 15/16	5 3/4	2	5/8	24.0
2 7/16		RFB-60MM	RCI-60MM	40167	174.6	136.5	193.3	90.5	38.1	106.4	101.6	100.0	146.1	50.8		10.89
2 1/2		RFB-207	RCI-207													
		RFB-208	RCI-208													
	65	RFB-65MM	RCI-65MM													
2 11/16	70	RFB-211	RCI-211	9630	7 3/4	6	8 31/64	3 15/16	1 5/8	4 11/16	4 1/2	4 23/32	6 1/2	2 1/4	3/4	33.4
2 3/4		RFB-212	RCI-212	42836	196.9	152.4	215.5	100.0	41.3	119.1	114.3	119.9	165.1	57.2		15.15
		RFB-70MM	RCI-70MM													
		RFB-215	RCI-215													
2 15/16	75	RFB-75MM	RCI-75MM													
		RFB-300	RCI-300													
3 3/16	80	RFB-80MM	RCI-80MM													
3 1/4		RFB-303	RCI-303													
		RFB-304	RCI-304													
3 7/16	85	RFB-85MM	RCI-85MM	15320	9 1/4	7	9 29/32	4 1/2	1 7/8	5 1/4	5	5 7/16	8	2 1/2	3/4	57.4
3 1/2		RFB-307	RCI-307	68147	235.0	177.8	251.6	114.3	47.6	133.4	127.0	138.1	203.2	63.5		26.04
		RFB-308	RCI-308													
	90	RFB-90MM	RCI-90MM													
	95	RFB-95MM	RCI-95MM													
3 15/16	100	RFB-315	RCI-315	20980	10 1/4	7 3/4	10 61/64	5 5/8	2 1/8	6 1/2	6 1/4	5 15/16	8 7/8	3 1/8	7/8	81.8
4		RFB-100MM	RCI-100MM	93324	260.4	196.9	278.2	142.9	54.0	165.1	158.8	150.8	225.4	79.4		37.10
		RFB-400	RCI-400													
	105	RFB-105MM	RCI-105MM													

Metric dimensions for reference only.
Not all parts are available from stock.



- Rolling Elements:** Tapered Roller
- Housing:** Cast Iron Four Bolt Flange
- Self Alignment:** +/- 3 Degrees
- Lock:** Setscrew, Single Collar
- Seal:** Felt
- Optional Seal:** Single Lip Contact
- Temperature:** -20°F to 220°F

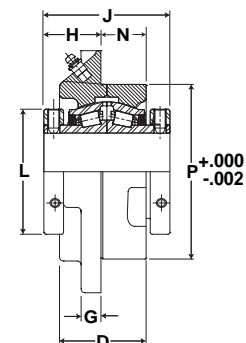
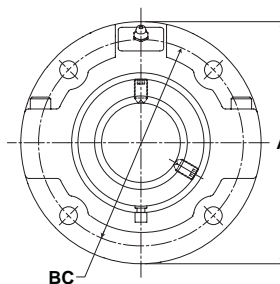


RFBA Series Four-Bolt Flange Units - Single Lock Collar

Bore Diameter		Part No.	Bearing Insert No.	Basic Dynamic Rating lb/N	Dimensions inch / mm											Unit Wt. lb/kg
					A	B	B.C.	D	G	H	J	L	M	N	Bolt Size	
1 3/16		RFBA-103	RCIA-103	2975	4	2 7/8	4 1/16	2 5/16	1	2 13/16	2 1/4	2 1/4	3 1/4	55/64	3/8	6.0
1 1/4		RFBA-104	RCIA-104	13233	101.6	73.0	103.2	58.7	25.4	71.4	57.2	57.2	82.6	21.8		2.72
1 3/8		RFBA-106	RCIA-106	4760	4 5/8	3 1/2	4 61/64	2 9/16	1	3 1/16	2 17/32	2 5/8	3 3/4	1 1/32	1/2	8.1
1 7/16		RFBA-107	RCIA-107	21174	117.5	88.9	125.8	65.1	25.4	77.8	64.3	66.7	95.3	26.2		3.67
1 1/2		RFBA-108	RCIA-108	6140	5 3/8	4 1/8	5 53/64	2 15/16	1 3/16	3 1/2	2 27/32	2 7/8	4 1/2	1 5/32	1/2	12.3
1 5/8		RFBA-110	RCIA-110	27312	136.5	104.8	148.0	74.6	30.2	88.9	72.2	73.0	114.3	29.4		5.58
1 3/4		RFBA-112	RCIA-112	8070 35897	5 5/8 142.9	4 3/8 111.1	6 3/16 157.2	3 1/16 77.8	1 3/16 30.2	3 5/8 92.1	2 61/64 75.0	3 1/4 82.6	4 3/4 120.7	1 13/64 30.6	1/2	14.5 6.58
1 15/16	45	RFBA-45MM	RCI-45MM													
	50	RFBA-50MM	RCI-50MM													
	2	RFBA-200	RCIA-200													
	55	RFBA-55MM	RCI-55MM	8570	6 1/4	4 7/8	6 57/64	3 1/4	1 3/8	3 7/8	3 1/8	3 5/8	5 1/4	1 1/4	5/8	19.0
2 3/16		RFBA-203	RCIA-203	38121	158.8	123.8	175.0	82.6	34.9	98.4	79.4	92.1	133.4	31.8		8.62
2 1/4		RFBA-204	RCIA-204	9030 40167	6 7/8 174.6	5 3/8 136.5	7 39/64 193.3	3 9/16 90.5	1 1/2 38.1	4 3/16 106.4	3 5/16 84.1	3 15/16 100.0	5 3/4 146.1	1 5/16 33.3	5/8	24.0 10.89
2 7/16	60	RFBA-60MM	RCI-60MM													
		RFBA-207	RCIA-207													
2 1/2	65	RFBA-65MM	RCI-65MM													
2 11/16		RFBA-211	RCIA-211	9630 42836	7 3/4 196.9	6 152.4	8 31/64 215.5	3 15/16 100.0	1 5/8 41.3	4 11/16 119.1	3 11/16 93.7	4 23/32 119.9	6 1/2 165.1	1 7/16 36.5	3/4	33.4 15.15
2 3/4	70	RFBA-70MM	RCI-70MM													
		RFBA-215	RCIA-215													
2 15/16	75	RFBA-75MM	RCI-75MM													
	3	RFBA-300	RCIA-300													
3 3/16		RFBA-80MM	RCI-80MM	15320 68147	9 1/4 235.0	7 177.8	9 29/32 251.6	4 1/2 114.3	1 7/8 47.6	5 1/4 133.4	4 3/16 106.4	5 7/16 138.1	8 203.2	1 11/16 42.9	3/4	57.4 26.04
3 1/4	80	RFBA-303	RCIA-303													
		RFBA-304	RCIA-304													
3 7/16	85	RFBA-85MM	RCI-85MM													
3 1/2	90	RFBA-307	RCIA-307													
		RFBA-308	RCIA-308													
	95	RFBA-90MM	RCI-90MM													
	95	RFBA-95MM	RCI-95MM													
3 15/16		RFBA-315	RCIA-315	20980 93324	10 1/4 260.4	7 3/4 196.9	10 61/64 278.2	5 5/8 142.9	2 1/8 54.0	6 1/2 165.1	5 1/4 133.4	5 15/16 150.8	8 7/8 225.4	2 1/8 54.0	7/8	81.8 37.10
	100	RFBA-100MM	RCI-100MM													
	4	RFBA-400	RCIA-400													
	105	RFBA-105MM	RCI-105MM													



- Rolling Elements:** Tapered Roller
- Housing:** Cast Iron Piloted Flange
- Self Alignment:** +/- 3 Degrees
- Lock:** Setscrew, Double Collar
- Seal:** Felt
- Optional Seal:** Single Lip Contact
- Temperature:** -20°F to 220°F



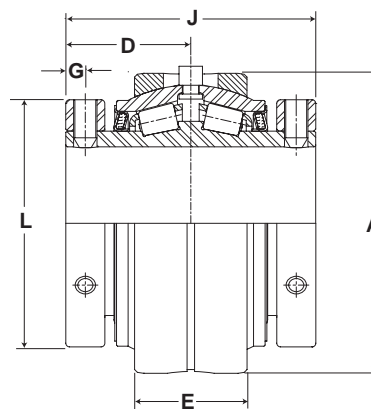
RFP Series Piloted Flange Cartridge Units

Bore Diameter		Part No.	Bearing Insert No.	Basic Dynamic Rating lb/N	Dimensions inch / mm										Unit Wt. lb/kg
					A	B.C.	D	G	H	J	L	N	P	Bolt Size	
1 3/16		RFP-103	RCI-103	2975	5	4 1/8	1 3/4	7/16	1 5/16	2 3/4	2 1/4	7/8	3 3/8	3/8	5.5
1 1/4		RFP-104	RCI-104	13233	127.0	104.8	44.5	11.1	33.3	69.9	57.2		85.7		2.49
1 3/8	35	RFP-106	RCI-106	4760	5 1/4	4 3/8	2	1/2	1 1/2	3	2 5/8	15/16	3 5/8	3/8	6.8
1 7/16		RFP-35MM	RCI-35MM	21174	133.4	111.1	50.8	12.7	38.1	76.2	66.7		92.1		3.08
1 1/2	40	RFP-108	RCI-108	6140	6 1/8	5 1/8	2 1/4	1/2	1 9/16	3 3/8	2 7/8	1 1/8	4 1/4	7/16	10.1
1 5/8		RFP-110	RCI-110	27312	155.6	130.2	57.2	12.7	39.7	85.7	73.0	28.6	108.0		4.58
1 11/16		RFP-111	RCI-111												
1 3/4	45	RFP-112	RCI-112	8070	6 3/8	5 3/8	2 5/16	9/16	1 9/16	3 1/2	3 1/4	1 1/4	4 1/2	7/16	11.6
1 15/16		RFP-45MM	RCI-45MM	35897	161.9	136.5	58.7	14.3	39.7	88.9	82.6	31.8	114.3		5.26
2	50	RFP-115	RCI-115												
		RFP-50MM	RCI-50MM												
		RFP-200	RCI-200												
2 3/16	55	RFP-55MM	RCI-55MM	8570	7 1/8	6	2 1/2	9/16	1 11/16	3 3/4	3 5/8	1 15/16	5	1/2	14.5
		RFP-203	RCI-203	38121	181.0	152.4	63.5	14.3	42.9	95.3	92.1	49.2	127.0		6.58
2 1/4	60	RFP-204	RCI-204												
2 7/16		RFP-60MM	RCI-60MM	9030	7 5/8	6 1/2	2 3/4	5/8	1 13/16	4	3 15/16	1 7/16	5 1/2	1/2	19
2 1/2		RFP-207	RCI-207	40167	193.7	165.1	69.9	15.9	46.0	101.6	100.0	36.5	139.7		8.62
		RFP-208	RCI-208												
		RFP-65MM	RCI-65MM												
2 11/16	70	RFP-211	RCI-211												
2 3/4		RFP-212	RCI-212	9630	8 3/4	7 1/2	2 7/8	3/4	2	4 1/2	4 23/32	1 9/16	6 3/8	5/8	26.7
2 15/16		RFP-70MM	RCI-70MM	42836	222.3	190.5	73.0	19.1	50.8	114.3	119.9	39.7	161.9		12.11
		RFP-215	RCI-215												
		RFP-75MM	RCI-75MM												
		RFP-300	RCI-300												
3 3/16	80	RFP-80MM	RCI-80MM												
3 1/4		RFP-303	RCI-303												
		RFP-304	RCI-304												
3 7/16	85	RFP-85MM	RCI-85MM	15320	10 1/4	8 5/8	3 3/8	7/8	2 7/16	5	5 7/16	1 5/8	7 3/8	3/4	42.6
3 1/2		RFP-307	RCI-307	68147	260.4	219.1	85.7	22.2	61.9	127.0	138.1	41.3	187.3		19.32
		RFP-308	RCI-308												
		RFP-90MM	RCI-90MM												
		RFP-95MM	RCI-95MM												
3 15/16	100	RFP-315	RCI-315	20980	10 7/8	9 3/8	4 3/8	15/16	2 11/16	6 1/4	5 15/16	2 7/16	8 1/8	3/4	55.2
4		RFP-100MM	RCI-100MM	93324	276.2	238.1	111.1	23.8	68.3	158.8	150.8	61.9	206.4		25.04
		RFP-400	RCI-400												
		RFP-105MM	RCI-105MM												
4 7/16	110	RFP-110MM	RCI-110MM	25750	13 1/2	11 3/4	4 5/8	1	3 1/32	6 3/4	6 13/32	2 3/8	10 1/4	3/4	91
4 1/2		RFP-407	RCI-407	114542	342.9	298.5	117.5	25.4	77.0	171.5	162.7	60.3	260.4		41.28
		RFP-408	RCI-408												
		RFP-115MM	RCI-115MM												
4 15/16	120	RFP-120MM	RCI-120MM	35520	14 3/4	12 3/4	5 3/8	1 1/4	2 31/32	7 1/4	7 13/32	2 7/8	11	7/8	115
5		RFP-125MM	RCI-125MM	158001	374.7	323.9	136.5	31.8	75.4	184.2	188.1	73.0	279.4		52.16
		RFP-415	RCI-415												
		RFP-500	RCI-500												

Metric dimensions for reference only.



- Rolling Elements:** Tapered Roller
- Housing:** Cylindrical Cartridge Insert
- Self Alignment:** +/- 3 Degrees
- Lock:** Setscrew, Double Collar
- Seal:** Felt
- Optional Seal:** Single Lip Contact
- Temperature:** -20°F to 220°F



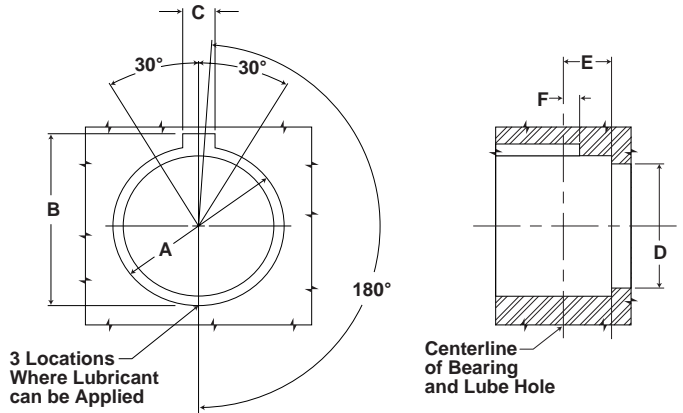
Mtd. Tapered Bearings



ERCI Series Replacement Cartridge Insert

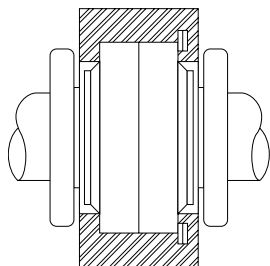
Bore Diameter		Part No.	Basic Dynamic Rating lb/N	Dimensions inch / mm						Unit Wt. lb/kg
inch	mm			A +.000 / -.001	D	E	G	J	L	
1 3/4		ERCI-112								
	45	ERCI-45MM								
1 15/16		ERCI-115	8070	3.937	1 3/4	1 3/4	5/16	3 1/2	3 1/4	6.5
	50	ERCI-50MM	35897	100.0	44.5	44.5	7.9	88.9	82.6	2.95
2		ERCI-200								
	55	ERCI-55MM	8570	4.437	1 7/8	1 3/4	5/16	3 3/4	3 5/8	7.7
2 3/16		ERCI-203	38121	112.7	47.6	44.5	7.9	95.3	92.1	3.49
2 1/4		ERCI-204								
	60	ERCI-60MM								
2 7/16		ERCI-207	9030	4.782	2	1 13/16	5/16	4	3 15/16	10.0
2 1/2		ERCI-208	40167	121.5	50.8	46.0	7.9	101.6	100.0	4.54
	65	ERCI-65MM								
2 11/16		ERCI-211								
2 3/4		ERCI-212								
	70	ERCI-70MM	9630	5.374	2 1/4	2	7/16	4 1/2	4 23/32	13.0
2 15/16		ERCI-215	42836	136.5	57.2	50.8	11.1	114.3	119.9	5.90
	75	ERCI-75MM								
3		ERCI-300								
	80	ERCI-80MM								
3 3/16		ERCI-303								
	85	ERCI-85MM	15320	6.593	2 1/2	2 1/4	7/16	5	5 7/16	22.0
3 7/16		ERCI-307	68147	167.5	63.5	57.2	11.1	127.0	138.1	9.98
3 1/2		ERCI-308								
	90	ERCI-90MM								
	95	ERCI-95MM								
3 15/16		ERCI-315								
	100	ERCI-100MM	20980	7.187	3 1/8	3 1/8	1/2	6 1/4	5 15/16	30.0
4		ERCI-400	93321	182.5	79.4	79.4	12.7	158.8	150.8	13.61
	105	ERCI-105MM								
	110	ERCI-110MM								
4 7/16		ERCI-407	25750	7.999	3 3/8	3 1/4	1/2	6 3/4	6 13/32	38.4
4 1/2		ERCI-408	114542	203.2	85.7	82.6	12.7	171.5	162.7	17.42
	115	ERCI-115MM								
	120	ERCI-120MM								
	125	ERCI-125MM	35520	9.061	3 5/8	3 3/4	5/8	7 1/4	7 13/32	55.0
4 15/16		ERCI-415	158001	230.1	92.1	95.3	15.9	184.2	188.1	24.95
5		ERCI-500								

Metric dimensions for reference only.
Not all parts are available from stock.

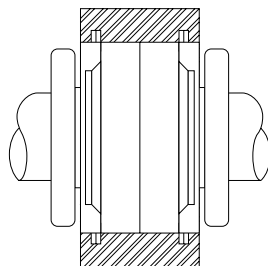


ERCI Series Housing Bore Dimensions

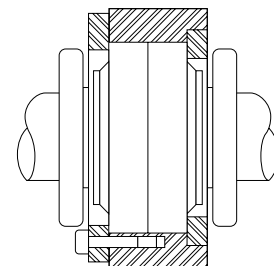
Bore Diameter		Dimensions inch / mm					
inch	mm	A +.002 / -.000 +.05 / -.000	B +.01 / -.00 +.25 / -.00	C +.01 / -.00 +.25 / -.00	D ±.01 ±.25	E ±.01 ±.25	F ±.005 ±.127
1 3/4 1 15/16 2	45 50	3.939 100.05	4.12 104.65	.44 11.18	3.63 42.20	.97 24.64	.25 6.35
2 3/16 2 1/4	55 60	4.439 112.75	4.62 117.35	.56 14.22	4.00 101.10	.97 24.64	.38 9.65
2 7/16 2 1/2	65	4.782 121.46	5.01 127.25	.56 14.22	4.38 111.25	1.03 26.16	.38 9.65
2 11/16 2 3/4 2 15/16 3	70 75	5.376 136.55	5.50 139.70	.56 14.22	5.12 130.05	1.16 29.46	.38 9.65
3 3/16 3 7/16 3 1/2	80 85 90 95	6.595 167.51	6.89 175.01	.75 19.05	6.00 152.40	1.28 32.51	.50 12.70
3 15/16 4	100 105 110	7.189 182.60	7.46 189.48	.75 19.05	6.62 168.15	1.75 44.45	.50 12.70
4 7/16 4 1/8	115	8.001 203.23	8.28 210.31	.75 19.05	7.25 184.15	1.81 45.97	.50 12.70
4 15/16 5	120 125	9.063 230.20	9.34 237.24	.75 19.05	8.50 215.90	2.06 52.35	.50 12.70



Cartridge Fixed Between Shoulder and Snap Ring



Cartridge Set For Expansion And Held Between Snap Rings



Cartridge Fixed Between Two Types of Collars



- Rolling Elements:** Tapered Roller
- Housing:** Cylindrical Cartridge Insert
- Self Alignment:** +/- 3 Degrees
- Lock:** Setscrew, Single and Double Collar
- Seal:** Felt
- Optional Seal:** Single Lip Contact
- Temperature:** -20°F to 220°F

Mtd. Tapered Bearings



RCI and RCIA Series Replacement Cartridge Inserts - Inch

Bore Diameter inch	RCI Felt Seal	Contact Seal	Hi-Temp Seal	Unit Wt. lb/kg
1 3/16	RCI-103	RCI-103-C	RCI-103-N	2.0 .91
1 1/4	RCI-104	RCI-104-C	RCI-104-N	1.9 .86
1 3/8	RCI-106	RCI-106-C	RCI-106-N	2.9 1.32
1 7/16	RCI-107	RCI-107-C	RCI-107-N	2.7 1.22
1 1/2	RCI-108	RCI-108-C	RCI-108-N	4.5 2.04
1 5/8	RCI-110	RCI-110-C	RCI-110-N	4.2 1.91
1 11/16	RCI-111	RCI-111-C	RCI-111-N	4.0 1.81
1 3/4	RCI-112	RCI-112-C	RCI-112-N	5.3 2.40
1 15/16	RCI-115	RCI-115-C	RCI-115-N	4.8 2.18
2 7/16	RCI-207	RCI-207-C	RCI-207-N	7.4 3.36
2 1/2	RCI-208	RCI-208-C	RCI-208-N	7.2 3.27
2 11/16	RCI-211	RCI-211-C	RCI-211-N	11.5 5.22
2 3/4	RCI-212	RCI-212-C	RCI-212-N	11.3 5.13
2 15/16	RCI-215	RCI-215-C	RCI-215-N	10.3 4.67
3	RCI-300	RCI-300-C	RCI-300-N	10.0 4.54
3 3/16	RCI-303	RCI-303-C	RCI-303-N	19.6 8.89
3 7/16	RCI-307	RCI-307-C	RCI-307-N	17.8 8.07
3 1/2	RCI-308	RCI-308-C	RCI-308-N	17.3 7.85
3 15/16	RCI-315	RCI-315-C	RCI-315-N	23.1 10.48
4	RCI-400	RCI-400-C	RCI-400-N	22.6 10.25
4 7/16	RCI-407	RCI-407-C	RCI-407-N	30.4 13.79
4 1/2	RCI-408	RCI-408-C	RCI-408-N	29.9 13.56
4 15/16	RCI-415	RCI-415-C	RCI-415-N	45.6 20.68
5	RCI-500	RCI-500-C	RCI-500-N	44.4 20.14

Bore Diameter inch	RCIA Felt Seal	Contact Seal	Hi-Temp Seal	Unit Wt. lb/kg
1 3/16	RCIA-103	RCIA-103-C	RCIA-103-N	2.0 .91
1 1/4	RCIA-104	RCIA-104-C	RCIA-104-N	1.9 .86
1 3/8	RCIA-106	RCIA-106-C	RCIA-106-N	2.9 1.32
1 7/16	RCIA-107	RCIA-107-C	RCIA-107-N	2.7 1.22
1 1/2	RCIA-108	RCIA-108-C	RCIA-108-N	4.5 2.04
1 5/8	RCIA-110	RCIA-110-C	RCIA-110-N	4.2 1.91
1 11/16	RCIA-111	RCIA-111-C	RCIA-111-N	4.0 1.81
1 3/4	RCIA-112	RCIA-112-C	RCIA-112-N	5.3 2.40
1 15/16	RCIA-115	RCIA-115-C	RCIA-115-N	4.8 2.18
2 7/16	RCIA-207	RCIA-207-C	RCIA-207-N	7.4 3.36
2 1/2	RCIA-208	RCIA-208-C	RCIA-208-N	7.2 3.27
2 11/16	RCIA-211	RCIA-211-C	RCIA-211-N	11.5 5.22
2 3/4	RCIA-212	RCIA-212-C	RCIA-212-N	11.3 5.13
2 15/16	RCIA-215	RCIA-215-C	RCIA-215-N	10.3 4.67
3	RCIA-300	RCIA-300-C	RCIA-300-N	10.0 4.54
3 3/16	RCIA-303	RCIA-303-C	RCIA-303-N	19.6 8.89
3 7/16	RCIA-307	RCIA-307-C	RCIA-307-N	17.8 8.07
3 1/2	RCIA-308	RCIA-308-C	RCIA-308-N	17.3 7.85
3 15/16	RCIA-315	RCIA-315-C	RCIA-315-N	23.1 10.48
4	RCIA-400	RCIA-400-C	RCIA-400-N	22.6 10.25
4 7/16	RCIA-407	RCIA-407-C	RCIA-407-N	30.4 13.79
4 1/2	RCIA-408	RCIA-408-C	RCIA-408-N	29.9 13.56
4 15/16	RCIA-415	RCIA-415-C	RCIA-415-N	45.6 20.68
5	RCIA-500	RCIA-500-C	RCIA-500-N	44.4 20.14



RCI-M and RCIA-M - Replacement Cartridge Inserts - Metric

Bore Diameter mm	RCI-M Felt Seal	Contact Seal	Hi-Temp Seal
35	RCI-35MM	RCI35MM-C	RCI35MM-N
40	RCI-40MM	RCI40MM-C	RCI40MM-N
45	RCI-45MM	RCI45MM-C	RCI45MM-N
50	RCI-50MM	RCI50MM-C	RCI50MM-N
55	RCI-55MM	RCI55MM-C	RCI55MM-N
60	RCI-60MM	RCI60MM-C	RCI60MM-N
65	RCI-65MM	RCI65MM-C	RCI65MM-N
70	RCI-70MM	RCI70MM-C	RCI70MM-N
75	RCI-75MM	RCI75MM-C	RCI75MM-N
80	RCI-80MM	RCI80MM-C	RCI80MM-N
95	RCI-85MM	RCI85MM-C	RCI85MM-N
90	RCI-90MM	RCI90MM-C	RCI90MM-N
95	RCI-95MM	RCI95MM-C	RCI95MM-N
100	RCI-100MM	RCI100MM-C	RCI100MM-N
105	RCI-105MM	RCI105MM-C	RCI105MM-N
110	RCI-110MM	RCI110MM-C	RCI110MM-N
115	RCI-115MM	RCI115MM-C	RCI115MM-N
120	RCI-120MM	RCI120MM-C	RCI120MM-N
125	RCI-125MM	RCI125MM-C	RCI125MM-N

Bore Diameter mm	RCIA-M Felt Seal	Contact Seal	Hi-Temp Seal
35	RCIA-35MM	RCIA35MM-C	RCIA35MM-N
40	RCIA-40MM	RCIA40MM-C	RCIA40MM-N
45	RCIA-45MM	RCIA45MM-C	RCIA45MM-N
50	RCIA-50MM	RCIA50MM-C	RCIA50MM-N
55	RCIA-55MM	RCIA55MM-C	RCIA55MM-N
60	RCIA-60MM	RCIA60MM-C	RCIA60MM-N
65	RCIA-65MM	RCIA65MM-C	RCIA65MM-N
70	RCIA-70MM	RCIA70MM-C	RCIA70MM-N
75	RCIA-75MM	RCIA75MM-C	RCIA75MM-N
80	RCIA-80MM	RCIA80MM-C	RCIA80MM-N
95	RCIA-85MM	RCIA85MM-C	RCIA85MM-N
90	RCIA-90MM	RCIA90MM-C	RCIA90MM-N
95	RCIA-95MM	RCIA95MM-C	RCIA95MM-N
100	RCIA-100MM	RCIA100MM-C	RCIA100MM-N
105	RCIA-105MM	RCIA105MM-C	RCIA105MM-N
110	RCIA-110MM	RCIA110MM-C	RCIA110MM-N
115	RCIA-115MM	RCIA115MM-C	RCIA115MM-N
120	RCIA-120MM	RCIA120MM-C	RCIA120MM-N
125	RCIA-125MM	RCIA125MM-C	RCIA125MM-N