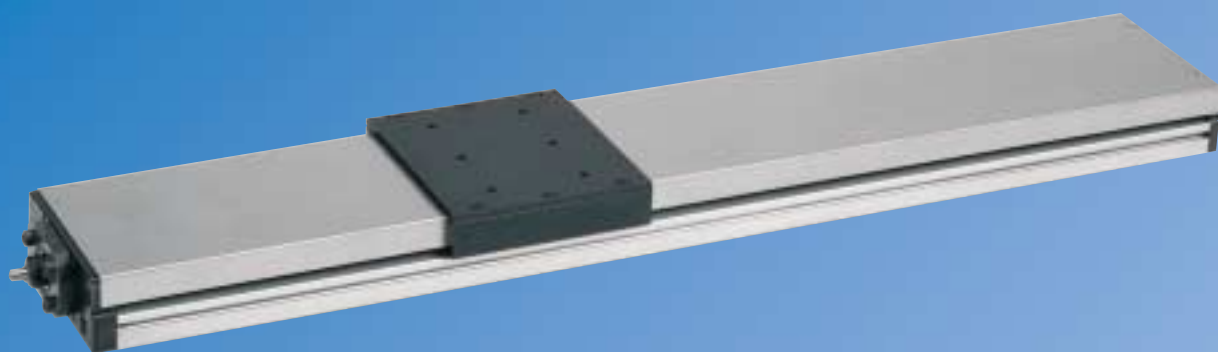


# SKF Rail guide tables



## The SKF Group

The SKF Group is an international industrial corporation of AB SKF Sweden, founded in 1907, operating in 130 countries. The company has some 45000 employees and more than 80 manufacturing facilities throughout the world.

Its international network is supported up by nearly 20000 distributors and retailers. SKF is the world leader in the rolling bearing business.

Bearings, seals and special steels are SKF's main product areas. In addition, they also manufacture and sell, other industrial precision components and products.

## SKF Linear Motion

One of these industrial precision products assortment is manufactured and sold by the SKF Linear Motion Division.

This unit has some 700 employees, 6 manufacturing facilities, 3 product lines. One of the division's strengths is its ability to serve the market through its organization based on 11 specialized Sales Companies located in Europe and North America; however product availability and product application support is provided world-wide by the SKF international network.

The Linear Motion product range covers:

- High Efficiency Screws
- Linear Guiding Systems
- Electromechanical Actuators

## CD-ROM "Designer"

All linear Motion products are available in this CD, in DWG and DXF files.

Thanks to "Designer", you can easily copy the drawing of the product you need into your own design drawing. If you are interested, please do not hesitate to contact your local SKF sales organization. It is free of charge.



- Linear Motion specialized companies
- SKF Bearing companies with Linear Motion specialized salesforce
- ▲ Manufacturing facilities

**Catalogue n° 5172 E / I  
47173 · 3000 · 2003-04**

Printed in Germany  
by Weppert GmbH & Co. KG

© Copyright SKF 2003

The contents of this catalogue are the copyright of the publishers and may not be reproduced (even extracts) unless permission is granted. Every care has been taken to ensure the accuracy of the information contained in this catalogue but no liability can be accepted for any errors or omissions.

Earlier catalogues the data in which deviate from those given here, are rendered invalid.

The right is reserved to make changes necessitated by technological developments.

|   |    |
|---|----|
| <b>Design and characteristic features</b> | 4  |
| <b>Tables LTB 110</b>                     | 10 |
| <b>Tables LTB 170</b>                     | 14 |
| <b>Tables LTB 235</b>                     | 18 |
| <b>Tables LTB 320</b>                     | 26 |
| <b>Tables LTB 400</b>                     | 30 |
| <b>Ordering details</b>                   | 31 |
| <b>Application samples</b>                | 32 |
| <b>Axes layout</b>                        | 34 |
| <b>Specification sheet</b>                | 35 |

## Contents

|  |    |
|--|----|
| <b>Design and characteristic features</b> .....        | 4  |
| General .....  | 4  |
| Guide .....  | 4  |
| Drive .....  | 6  |
| Cover .....  | 8  |
| Precision classes .....                                | 8  |
| Stroke .....   | 9  |
| Materials .....  | 9  |
| Permissible operating temperature .....                | 9  |
| Lubrication .....                                      | 9  |
| Load carrying capacity and life .....                  | 9  |
| Accessories .....                                      | 9  |
| <b>Tables</b> .....                                    | 10 |
| LTB110 rail guide tables with ball screw drive .....   | 10 |
| LTB110 rail guide tables with linear motor drive ..... | 12 |
| LTB170 rail guide tables with ball screw drive .....   | 14 |
| LTB170 rail guide tables with linear motor drive ..... | 16 |
| LTB235 rail guide tables with ball screw drive .....   | 18 |
| LTB235 rail guide tables with linear motor drive ..... | 22 |
| LTB320 rail guide tables with ball screw drive .....   | 26 |
| LTB320 rail guide tables with linear motor drive ..... | 28 |
| LTB400 rail guide tables with ball screw drive .....   | 30 |
| <b>Ordering details</b> .....                          | 31 |
| <b>Application samples</b> .....                       | 32 |
| <b>Axes layout</b> .....                               | 34 |
| <b>Specification sheet</b> .....                       | 35 |

## Design and characteristic features

### General

SKF rail guide tables are state-of-the-art tables with high accuracy and high load carrying capacity.

They are available in the following variations:

- five different sizes,
- three different covers
- two different drives
- four precision classes.

#### Sizes:

SKF rail guide tables are available in widths of 110, 170, 235, 320 and 400 mm.

#### Drives:

Two different drives can be fitted: ball screws and linear motors.

#### Cover:

The rail guide tables can be supplied in three versions: without cover, with bellows, with steel cover.

#### Precision classes:

Depending on their application, the slides are available in four precision classes: P10, P5, P2, P1.

#### Customer benefits:

- Modular and compact design.
- Variants having high load carrying capacity and stiffness.
- Large number of drives, providing the optimum solution for any application.
- Different covers to suit the environmental conditions.
- Precision class matched with application, thus more cost-efficient.

### Guide

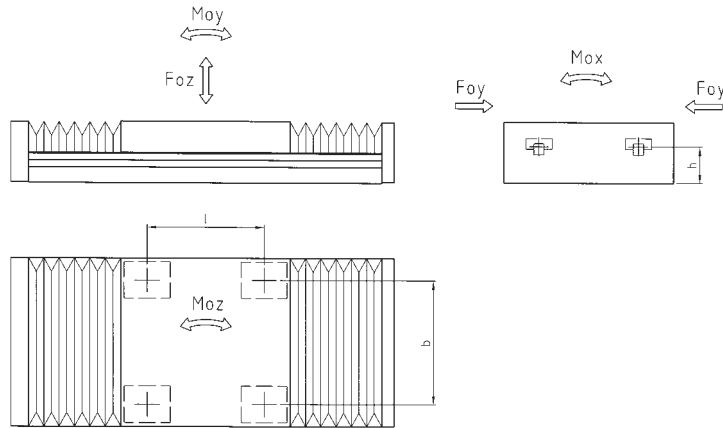
SKF rail guide tables are equipped with a pair of rails fitted with a total of four carriages (with the exception of size 110 with linear motor F 22706 having six carriages).

#### Customer benefits:

- Profile rail with high load carrying capacity and stiffness

See Table 1 for further technical details.

Table 1: Load carrying capacity of the tables



| Type<br>Size       | Precision<br>class | Load rating per<br>carriage |                | No. of<br>carriages<br>z | Distance |     |                 | Maximum static load per table <sup>1)</sup> |                 |                 |                 |                 |
|--------------------|--------------------|-----------------------------|----------------|--------------------------|----------|-----|-----------------|---|-----------------|-----------------|-----------------|-----------------|
|                    |                    | C                           | C <sub>o</sub> |                          | b        | l   | h <sup>3)</sup> | F <sub>oz</sub>                             | F <sub>oy</sub> | M <sub>ox</sub> | M <sub>oy</sub> | M <sub>oz</sub> |
|                    |                    | N                           |                | -                        | mm       |     |                 | N   |                 | Nm              |                 |                 |
| LTB110.L1.SH/TN    | P10 - P1           | 2.295                       | 4.270          | 4                        | 81       | 69  | 23              | 17.080                                      | 8.540           | 690             | 580             | 290             |
| LTB110.L1.F20906   | P5 - P1            | 2.295                       | 4.270          | 4                        | 81       | 63  | 23              | 16.880                                      | 8.440           | 680             | 530             | 260             |
| LTB110.L1.F21806   | P5 - P1            | 2.295                       | 4.270          | 4                        | 81       | 130 | 23              | 16.680                                      | 8.340           | 670             | 1.080           | 540             |
| LTB110.L1.F22706   | P5 - P1            | 2.295                       | 4.270          | 6                        | 81       | 220 | 23              | 25.020                                      | 12.510          | 1.010           | 2.750           | 1.370           |
| LTB170.L1.SH/TN    | P10 - P1           | 7.800                       | 13.500         | 4                        | 116      | 92  | 35              | 54.000                                      | 27.000          | 3.130           | 2.480           | 1.240           |
| LTB170.L1.F21806   | P5 - P1            | 7.800                       | 13.500         | 4                        | 116      | 124 | 35              | 53.600                                      | 26.800          | 3.100           | 3.320           | 1.660           |
| LTB170.L1.F22706   | P5 - P1            | 7.800                       | 13.500         | 4                        | 116      | 195 | 35              | 53.400                                      | 26.700          | 3.090           | 5.200           | 2.600           |
| LTB235.L1.SX/TN/TL | P10 - P1           | 18.800                      | 24.400         | 4                        | 156      | 140 | 46              | 97.600                                      | 48.800          | 7.610           | 6.830           | 3.410           |
| LTB235.L1.A32008   | P5 - P1            | 18.800                      | 24.400         | 4                        | 156      | 142 | 46              | 95.800                                      | 47.900          | 7.470           | 6.800           | 3.400           |
| LTB235.L1.A33008   | P5 - P1            | 18.800                      | 24.400         | 4                        | 156      | 177 | 46              | 94.900                                      | 47.450          | 7.400           | 8.390           | 4.190           |
| LTB235.L1.A34008   | P5 - P1            | 18.800                      | 24.400         | 4                        | 156      | 262 | 46              | 94.000                                      | 47.000          | 7.330           | 12.310          | 6.150           |
| LTB320.L1.SX/TN/TL | P10 - P1           | 22.800                      | 30.400         | 4                        | 220      | 221 | 70              | 121.600                                     | 60.800          | 13.370          | 13.430          | 6.710           |
| LTB320.L1.A32014   | P5 - P1            | 22.800                      | 30.400         | 4                        | 220      | 160 | 70              | 118.000                                     | 59.000          | 12.980          | 9.440           | 4.720           |
| LTB320.L1.A33014   | P5 - P1            | 22.800                      | 30.400         | 4                        | 220      | 185 | 70              | 116.000                                     | 58.100          | 12.780          | 10.740          | 5.370           |
| LTB320.L1.A34014   | P5 - P1            | 22.800                      | 30.400         | 4                        | 220      | 275 | 70              | 114.000                                     | 57.200          | 12.580          | 15.730          | 7.860           |
| LTB400.L1.SX/TN/TL | P10 - P1           | 41.900                      | 54.000         | 4                        | 270      | 270 | 77              | 216.000                                     | 108.000         | 29.160          | 29.160          | 14.580          |

<sup>1)</sup> Loads F<sub>oz</sub> and F<sub>oy</sub> for central load application, but not for slides with steel cover.

Moments M<sub>ox</sub> to M<sub>oz</sub> for pure moment load (without force), but not for slides with steel cover.

<sup>2)</sup> Distance up to the middle of the rail

## Design and characteristic features

### Drive

#### Tables with a ball screw:

These tables are equipped with precision rolled thread ballscrew drives.

Screws SH and SX have a nut with internal ball recirculation. They are not preloaded, the axial clearance is

0.1 mm maximum. These screws are the standard for precision class P10 tables. On request also for P5.

Screws TN and TL are fitted with an internal preloaded nut. TL screws have long leads and are therefore suitable for high travel speeds. They can be fitted in tables of precision classes P5 to P1.

#### Benefits:

- Robust drive.
- Suitable for high axial forces.
- Any drive can be fitted, e.g. manual drive, DC, AC or stepped motor.
- Attachment via motor flange or indirect toothed belt drive.

See Table 2 for further technical information.

Table 2: Ball screw technical details

| Table         |                 | Screw         |                | Nominal diameter |   |                   | Load rating <sup>2)</sup> |                        | Table drive torque    |                                 |
|---------------|-----------------|---------------|----------------|------------------|---|-------------------|---------------------------|------------------------|-----------------------|---------------------------------|
| Type Size     | Precision class | Type Size     | d <sub>o</sub> | Lead p           | Lead accuracy <sup>1)</sup> acc. to ISO | V <sub>300p</sub> | dynamic C <sub>a</sub>    | static C <sub>oa</sub> | idling M <sub>s</sub> | Max. permissible M <sub>a</sub> |
|               |                 |               | mm             |                  |   | µm/300 mm         | N                         |                        | Nm                    |                                 |
| <b>LTB110</b> | P10-P5          | <b>SH1205</b> | 12             | 5                | G9                                      | 87                | 3.100                     | 5.100                  | 0,17                  | 2,6                             |
|               | P5-P1           | <b>TN1205</b> | 12             | 5                | G7                                      | 40                | 6.060                     | 7.100                  | 0,27                  | 2,6                             |
|               | P5-P1           | <b>TN1210</b> | 12             | 10               | G7                                      | 40                | 3.730                     | 3.550                  | 0,30                  | 2,6                             |
| <b>LTB170</b> | P10-P5          | <b>SH1605</b> | 16             | 5                | G9                                      | 87                | 5.200                     | 8.700                  | 0,18                  | 5,8                             |
|               | P5-P1           | <b>TN1605</b> | 16             | 5                | G7                                      | 40                | 10.710                    | 12.720                 | 0,33                  | 8,4                             |
|               | P5-P1           | <b>TN1610</b> | 16             | 10               | G7                                      | 40                | 10.710                    | 12.720                 | 0,38                  | 12,0                            |
|               | P5-P1           | <b>TN1616</b> | 16             | 16               | G7                                      | 40                | 6.590                     | 6.360                  | 0,42                  | 12,0                            |
| <b>LTB235</b> | P10-P5          | <b>SX2505</b> | 25             | 5                | G9                                      | 87                | 15.600                    | 31.000                 | 0,19                  | 20,6                            |
|               | P10-P5          | <b>SX2510</b> | 25             | 10               | G9                                      | 87                | 18.800                    | 31.000                 | 0,21                  | 32,9                            |
|               | P5-P1           | <b>TN2505</b> | 25             | 5                | G7                                      | 40                | 12.700                    | 22.440                 | 0,49                  | 14,9                            |
|               | P5-P1           | <b>TN2510</b> | 25             | 10               | G7                                      | 40                | 12.700                    | 22.440                 | 0,61                  | 29,8                            |
|               | P5-P1           | <b>TL2520</b> | 25             | 20               | G7                                      | 40                | 12.700                    | 22.440                 | 0,62                  | 32,9                            |
|               | P5-P1           | <b>TL2525</b> | 25             | 25               | G7                                      | 40                | 7.820                     | 11.220                 | 0,65                  | 32,9                            |
| <b>LTB320</b> | P10-P5          | <b>SX3205</b> | 32             | 5                | G9                                      | 87                | 17.800                    | 50.400                 | 0,19                  | 33,4                            |
|               | P10-P5          | <b>SX3210</b> | 32             | 10               | G9                                      | 87                | 27.500                    | 55.000                 | 0,22                  | 72,9                            |
|               | P5-P1           | <b>TN3205</b> | 32             | 5                | G7                                      | 40                | 14.210                    | 30.960                 | 0,59                  | 20,5                            |
|               | P5-P1           | <b>TN3210</b> | 32             | 10               | G7                                      | 40                | 23.390                    | 40.960                 | 0,82                  | 54,3                            |
|               | P5-P1           | <b>TL3220</b> | 32             | 20               | G7                                      | 40                | 23.390                    | 40.960                 | 0,72                  | 96,0                            |
|               | P5-P1           | <b>TL3232</b> | 32             | 32               | G7                                      | 40                | 14.400                    | 20.480                 | 0,84                  | 86,9                            |
|               | P5-P1           | <b>TL3240</b> | 32             | 40               | G7                                      | 40                | 14.400                    | 20.480                 | 0,88                  | 96,0                            |
| <b>LTB400</b> | P10-P5          | <b>SX4005</b> | 40             | 5                | G9                                      | 87                | 19.500                    | 63.100                 | 0,21                  | 41,8                            |
|               | P10-P5          | <b>SX4010</b> | 40             | 10               | G9                                      | 87                | 29.000                    | 64.000                 | 0,26                  | 84,9                            |
|               | P5-P1           | <b>TN4005</b> | 40             | 5                | G7                                      | 40                | 20.350                    | 59.580                 | 0,81                  | 39,3                            |
|               | P5-P1           | <b>TN4010</b> | 40             | 10               | G7                                      | 40                | 29.000                    | 64.000                 | 1,66                  | 84,9                            |
|               | P5-P1           | <b>TL4020</b> | 40             | 20               | G7                                      | 40                | 29.000                    | 64.000                 | 0,90                  | 169,7                           |
|               | P5-P1           | <b>TL4040</b> | 40             | 40               | G7                                      | 40                | 25.500                    | 35.120                 | 1,09                  | 186,3                           |

<sup>1)</sup> Lead accuracy G5 at V<sub>300p</sub> = 23 µm/300 mm available on request.

<sup>2)</sup> Value indicated = minimum load rating of either screw or locating bearing

### Tables with a linear motor drive:

These are equipped with brushless AC motors and work as follows:

- The secondary part in the lower part of the table takes the form of a magnetic rail.
- The primary part is located in the travelling upper part of the table and takes the form of a coil system.
- Two or three-phase AC synchronous motors with electronic commutation.
- Linear measuring system, integrated in the table as standard.

### Customer benefits:

- High dynamics and stiffness in a closed loop system.
- Good synchronous characteristics.
- High acceleration capacity.
- High travel speeds, even with large strokes.
- Friction and wear free drive.

See Table 3 for further technical details.

**Table 3: Linear motor technical details**

| For table:                           |           |                    | LTB | 110   | 110+170           |                   |            | 235        | 320          |              |              |              |
|--------------------------------------|-----------|--------------------|-----|---|-------------------|-------------------|------------|------------|--------------|--------------|--------------|--------------|
| Motor size                           |           |                    |     | F20906  | F21806            | F22706            | A32008     | A33008     | A34008       | A32014       | A33014       | A34014       |
| Number of motor phases               |           |                    |     | 2P  | 2P                |                   | 3P         |            |              | 3P           |              |              |
| Static maximum force                 | $F_p$     | N                  |     | <b>105</b>  | <b>210</b>        | <b>315</b>        | <b>600</b> | <b>900</b> | <b>1.200</b> | <b>1.200</b> | <b>1.800</b> | <b>2.400</b> |
| Nominal force                        | $F_n$     | N                  |     | 33  | 66                | 100               | 190        | 285        | 379          | 379          | 596          | 759          |
| Power loss at $F_p$                  | $P_{vp}$  | W                  |     | 212   | 424               | 637               | 424        | 643        | 907          | 690          | 1.043        | 1.381        |
| Power loss at $F_n$                  | $P_{vn}$  | W                  |     | 21  | 42                | 64                | 42         |            | 91           | 69           | 104          | 138          |
| Motor constant                       | $k_m$     | N/W <sup>2</sup>   |     | 7,2   | 10,2              | 12,5              | 29,1       | 35,5       | 39,8         | 45,7         | 55,7         | 64,6         |
| Attractive force between motor parts | $F_a$     | N                  |     | 200   | 400               | 600               | 1.800      | 2.700      | 3.600        | 3.600        | 5.400        | 7.200        |
| Force constant                       | $k_f$     | N/A <sub>eff</sub> |     | 19,7  | 19,7              | 19,7              | 74         | 74         | 74           | 148          | 148          | 148          |
| Dyn. force at $v_{lim}$              | $F_{lim}$ | N                  |     | 70  | 160               | 250               | 430        | 750        | 1.100        | 900          | 1.550        | 2.200        |
| Linear limiting speed at $F_{lim}$   | $v_{lim}$ | m/s                |     | 3,0 <sup>1)</sup>   | 3,0 <sup>1)</sup> | 3,0 <sup>1)</sup> | 2,5        | 2,4        | 2,3          | 1,3          | 1,2          | 1,1          |
| Maximum current                      | $I_p$     | A <sub>eff</sub>   |     | 5,3   | 10,6              | 16,0              | 8,1        | 12,2       | 16,2         | 8,1          | 12,2         | 16,2         |
| Continuons current                   | $I_n$     | A <sub>eff</sub>   |     | 1,7   | 3,4               | 5,0               | 2,6        | 3,8        | 5,1          | 2,6          | 3,8          | 5,1          |
| DC-link Voltage                      | $U_{zk}$  | V                  |     | 80  | 80                | 80                | 300        | 300        | 300          | 300          | 300          | 300          |
| <b>Linear measuring system:</b>      |           |                    |     |   |                   |                   |            |            |              |              |              |              |
| Signal output                        |           |                    |     | Standard: sinus signal, 1Vss, grading rate 20µm;<br>Option: TTL-signal resolution 0,1 - 0,2 - 0,5 - 1µm, after 4-fold interpolation |                   |                   |            |            |              |              |              |              |
| Limit-/Ref. switch                   |           |                    |     | 2 switches integrated inside the measuring system, PNP/NC or NPN/NC possible  |                   |                   |            |            |              |              |              |              |
| Precision class                      |           |                    |     | Standard: ±5µm; option: ±3µm or ±2µm  |                   |                   |            |            |              |              |              |              |

<sup>1)</sup> limited by linear guiding



## Design and characteristic features

### Cover

The slides with ball screw and linear motor drive are available as follows:

- **With bellows** made of oil and water resistant polyurethane fibre material on both sides.

The carriages and ballscrew nut are additionally protected by wipers (with the exception of the SH screws). The screw thrust bearings are also sealed.

- **Without cover** for applications without exposure to dirt, e.g. in laboratories. The carriages, ballscrew nut and bearings are sealed as they are in the bellows version. The effective stroke is, of course, longer than in the bellows version.

- **With steel cover**, made from corrosion resistant steel sheet, for applications with extreme exposure to dirt from above or for those applications where shock impacts on the cover cannot be excluded. The effective stroke is as long as in the version without cover.

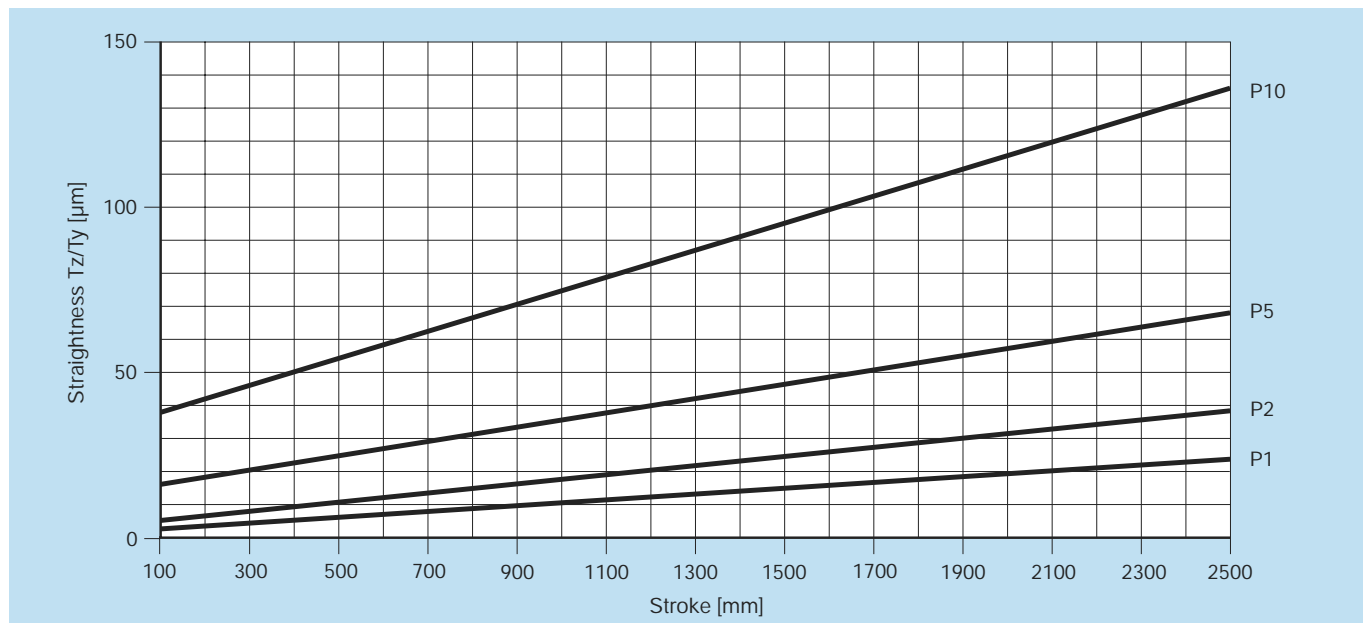
### Precision classes

The characteristics of the different precision classes are listed in the table below.

The precision given in Diagram 1 applies to a single table in clamped condition on an ideal plane clamping surface.

Straightness defined as in VDI 2617 sheet 3.

Diagram 1: Precision



## Stroke

The strokes S1 (with bellows), S2 (without bellows) and S (with steel cover) are the maximum travel distances between the end stops. Depending on the speed and the moving mass the operating stroke is correspondingly less. The overrun on both sides must be larger than the length of the brake path of the drive. The value of  $2 \times p$  (spindle lead) can be considered to be a reliable guideline value.

## Materials

As standard, the table components are made of aluminium and are black oxidised. The bottom part of the table is made of untreated aluminium. On request the bottom part and the top part are also available in steel.

## Permissible operating temperature

Tables with screw drives:  
-20°C to +80°C constant temperature.  
Linear motor slides:  
0°C to + 55°C constant temperature.

## Lubrication

The guides and screw are greased with an all-purpose SKF grease by the manufacturing unit. The carriages and the screw nut can be relubricated. For further information please refer to the operating instructions.

On the carriages can be fitted with a central lubricating connection. Five lubricating holes are provided in the side plate. (Not possible by using carriages with steel cover.)

Relubrication intervals depending on operating conditions:  
20 - 200 km or after  
1 year at the latest.

## Load carrying capacity and life

For exact dimensioning and design of SKF rail guide tables and drives please contact SKF Linear Motion. In order to provide the required data correctly, please fill in the **specification sheet** on page 35.

## Accessories

### Limit and reference switches

Tables with ball screw drives are fitted with inductive limit switches PNP/NC as standard and can be equipped with inductive reference switches on request. These are integral with the slide. They are connected via a central plug connection on one of the end plates (see dimension specifications).

Slides with linear motor drive are fitted with 2 limit/reference switches PNP/NC or NPN/NC, which are integrated in the linear measuring system.

### Cross table assembly

Individual tables can be mounted to form a cross table. The standard drill hole patterns of the table top and bottom parts are matched so that mounting of the same or next smaller size is possible. Please note the details in the corresponding column of the dimensional specifications.

### Linear measuring system

The attachment of a direct linear measurement system is possible. The slides with linear motor drive are equipped with a linear measuring system as standard. It is integral with the table. Further information can be found in Table 3 on page 7.

## Motor flange

The slides with ball screw drives can be equipped with a motor flange and coupling on request. When ordering please indicate the motor manufacturer, model and type.

## Indirect toothed belt drive

If space is restricted, an indirect drive using a toothed belt may be the best choice. The motor can be mounted on either the right or left hand side. Standard transmission ratio 1:1.

## Linear motor control units and control components

The following components are available for controlling the linear motors:

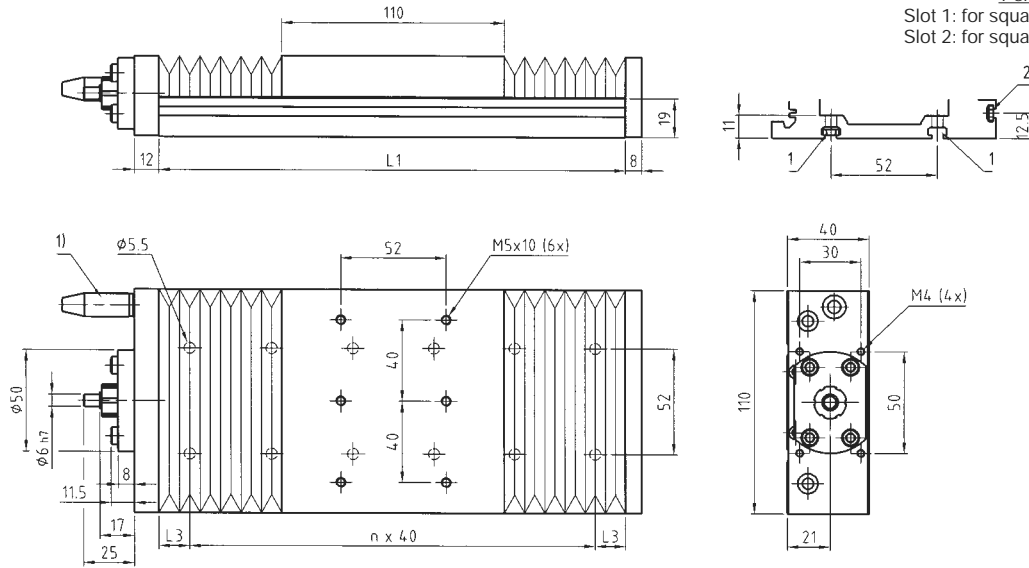
- Dividing electronics for measuring system, integrated in the table
- Servo module
- Point-to-point or continuous path control

Further information available on request or in the offer as submitted.

# LTB 110.L1.SH/TN12xx-BL

# Rail guide tables with ball screw drive with or without bellows

T slots in bottom part:  
Slot 1: for square nut DIN 562 M5  
Slot 2: for square nut DIN 562 M4



1) Plug connection for limit and reference switches (optional)

Direction of travel - <----> +

| Length |    |    | 2)<br>KN | Stroke <sup>3)</sup> |     | Screw data                 |                                 | Weight <sup>4)</sup> |                |
|--------|----|----|----------|----------------------|-----|----------------------------|---------------------------------|----------------------|----------------|
| L1     | L3 | n  |          | S1                   | S2  | SH1205<br>n <sub>max</sub> | TN1205+1210<br>n <sub>max</sub> | G <sub>A</sub>       | G <sub>O</sub> |
| mm     |    |    | -        | mm                   |     | 1/min                      |                                 | kg                   |                |
| 150    | 15 | 3  |          | 20                   | 30  | 4160                       | 7500                            | 1,7                  | 0,8            |
| 190    | 15 | 4  | x        | 45                   | 70  | 4160                       | 7500                            | 1,6                  |                |
| 230    | 15 | 5  |          | 70                   | 110 | 4160                       | 7500                            | 1,8                  |                |
| 270    | 15 | 6  | x        | 95                   | 150 | 4160                       | 7500                            | 2,0                  |                |
| 310    | 15 | 7  |          | 115                  | 190 | 4160                       | 7500                            | 2,2                  |                |
| 350    | 15 | 8  | x        | 140                  | 230 | 4160                       | 7500                            | 2,4                  |                |
| 390    | 15 | 9  |          | 165                  | 270 | 4160                       | 7500                            | 2,6                  |                |
| 430    | 15 | 10 | x        | 190                  | 310 | 4160                       | 7500                            | 2,7                  |                |
| 470    | 15 | 11 |          | 215                  | 350 | 4160                       | 7500                            | 2,9                  |                |
| 510    | 15 | 12 | x        | 240                  | 390 | 4160                       | 7500                            | 3,1                  |                |
| 550    | 15 | 13 |          | 265                  | 430 | 4160                       | 6370                            | 3,3                  |                |
| 590    | 15 | 14 | x        | 285                  | 470 | 4160                       | 5420                            | 3,5                  |                |
| 630    | 15 | 15 |          | 310                  | 510 | 4160                       | 4670                            | 3,6                  |                |
| 670    | 15 | 16 | x        | 335                  | 550 | 3900                       | 4060                            | 3,8                  |                |
| 710    | 15 | 17 |          | 360                  | 590 | 3420                       | 3570                            | 4,0                  |                |
| 750    | 15 | 18 | x        | 385                  | 630 | 3030                       | 3160                            | 4,2                  |                |
| 790    | 15 | 19 |          | 410                  | 670 | 2700                       | 2810                            | 4,4                  |                |
| 830    | 15 | 20 | x        | 430                  | 710 | 2420                       | 2520                            | 4,5                  |                |
| 870    | 15 | 21 |          | 455                  | 750 | 2180                       | 2280                            | 4,7                  |                |
| 910    | 15 | 22 | x        | 480                  | 790 | 1980                       | 2060                            | 4,9                  |                |
| 950    | 15 | 23 |          | 505                  | 830 | 1800                       | 1880                            | 5,1                  |                |

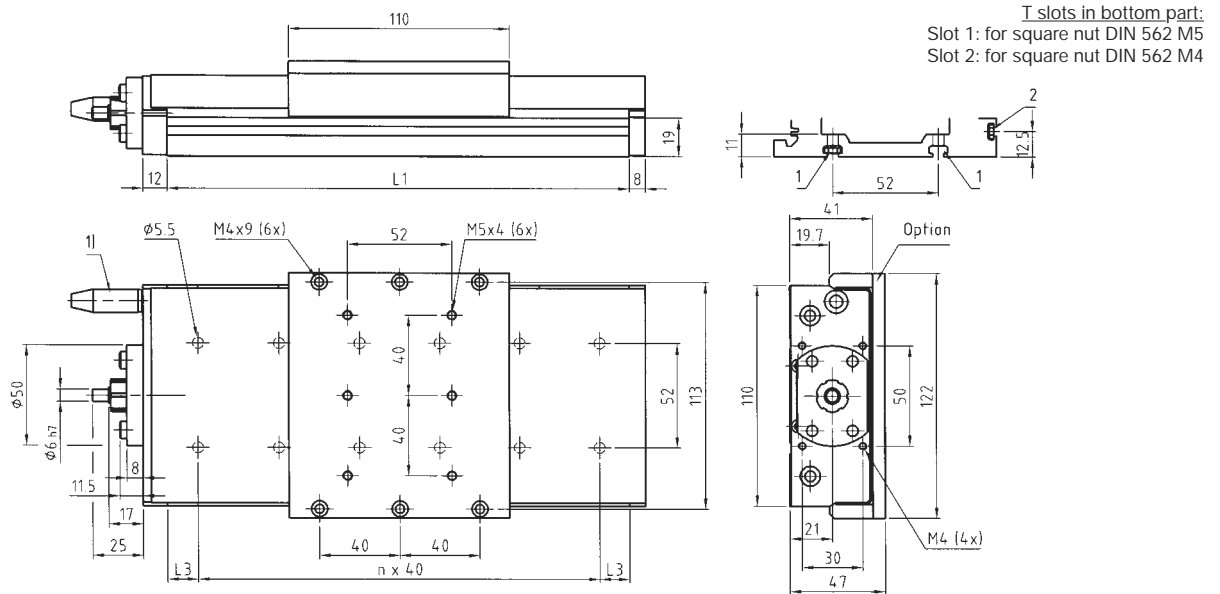
2) Suitable as top axis for central cross table mounting

3) Maximum stroke between end stops:  
S1 with bellows (standard version)  
S2 without bellows (special version)

4) G<sub>A</sub> = Total mass of table  
G<sub>O</sub> = Mobile mass of table top

# LTB 110.L1.SH/TN12xx-SC

# Rail guide tables with ball screw drive with steel cover



1) Plug connection for limit and reference switches (optional)

Direction of travel - <---> +

| Length |    |    |          |                           | Screw data                 |                                 | Weight <sup>4)</sup> |                |
|--------|----|----|----------|---------------------------|----------------------------|---------------------------------|----------------------|----------------|
| L1     | L3 | n  | 2)<br>KN | Stroke <sup>3)</sup><br>S | SH1205<br>n <sub>max</sub> | TN1205+1210<br>n <sub>max</sub> | G <sub>A</sub>       | G <sub>O</sub> |
| mm     |    | -  |          | mm                        | 1/min                      |                                 | kg                   |                |
| 150    | 15 | 3  |          | 30                        | 4160                       | 7500                            | 2,0                  | 0,9            |
| 190    | 15 | 4  | x        | 70                        | 4160                       | 7500                            | 2,2                  |                |
| 230    | 15 | 5  |          | 110                       | 4160                       | 7500                            | 2,4                  |                |
| 270    | 15 | 6  | x        | 150                       | 4160                       | 7500                            | 2,6                  |                |
| 310    | 15 | 7  |          | 190                       | 4160                       | 7500                            | 2,8                  |                |
| 350    | 15 | 8  | x        | 230                       | 4160                       | 7500                            | 3,0                  |                |
| 390    | 15 | 9  |          | 270                       | 4160                       | 7500                            | 3,2                  |                |
| 430    | 15 | 10 | x        | 310                       | 4160                       | 7500                            | 3,4                  |                |
| 470    | 15 | 11 |          | 350                       | 4160                       | 7500                            | 3,6                  |                |
| 510    | 15 | 12 | x        | 390                       | 4160                       | 7500                            | 3,8                  |                |
| 550    | 15 | 13 |          | 430                       | 4160                       | 6370                            | 4,0                  |                |
| 590    | 15 | 14 | x        | 470                       | 4160                       | 5420                            | 4,2                  |                |
| 630    | 15 | 15 |          | 510                       | 4160                       | 4670                            | 4,4                  |                |
| 670    | 15 | 16 | x        | 550                       | 3900                       | 4060                            | 4,6                  |                |
| 710    | 15 | 17 |          | 590                       | 3420                       | 3570                            | 4,8                  |                |
| 750    | 15 | 18 | x        | 630                       | 3030                       | 3160                            | 5,0                  |                |
| 790    | 15 | 19 |          | 670                       | 2700                       | 2810                            | 5,2                  |                |
| 830    | 15 | 20 | x        | 710                       | 2420                       | 2520                            | 5,4                  |                |
| 870    | 15 | 21 |          | 750                       | 2180                       | 2280                            | 5,6                  |                |
| 910    | 15 | 22 | x        | 790                       | 1980                       | 2060                            | 5,8                  |                |
| 950    | 15 | 23 |          | 830                       | 1800                       | 1880                            | 6,0                  |                |

2) Suitable as top axis for central cross table mounting

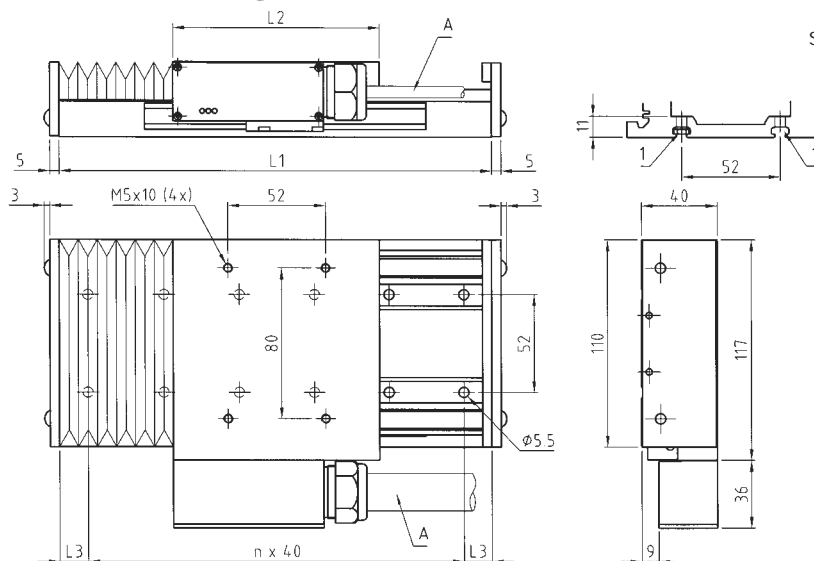
3) Maximum stroke between end stops

4) G<sub>A</sub> = Total mass of table  
G<sub>O</sub> = Mobile mass of table top

# LTB 110.L1.F2xxxx-BL

# Rail guide tables with linear motor drive with or without bellows

T slots in bottom part:  
Slot 1: for square nut DIN 562 M5



A Cable output for motor and measuring system. Flat ribbon cable 20 x 6.3 mm

Direction of travel: - <---> +

| Length |    |    | F20906 |                   |     |                            |     | F21806            |     |                            |     |                   | F22706 |                            |     |                   |  |
|--------|----|----|--------|-------------------|-----|----------------------------|-----|-------------------|-----|----------------------------|-----|-------------------|--------|----------------------------|-----|-------------------|--|
| L1     | L3 | n  | 2) KN  | 4) G <sub>U</sub> | L2  | Stroke <sup>3)</sup> S1 S2 |     | 5) G <sub>O</sub> | L2  | Stroke <sup>3)</sup> S1 S2 |     | 5) G <sub>O</sub> | L2     | Stroke <sup>3)</sup> S1 S2 |     | 5) G <sub>O</sub> |  |
| mm     |    | -  |        | kg                | mm  |                            |     | kg                | mm  |                            |     | kg                | mm     |                            |     | kg                |  |
| 150    | 15 | 3  |        | 1,3               | 110 | 20                         | 30  | 0,9               | 190 |                            |     | 1,5               | 280    |                            |     | 2,1               |  |
| 190    | 15 | 4  | x      | 1,5               |     | 45                         | 70  |                   |     |                            |     |                   |        |                            |     |                   |  |
| 230    | 15 | 5  |        | 2,0               |     | 70                         | 110 |                   |     | 20                         | 30  |                   |        |                            |     |                   |  |
| 270    | 15 | 6  | x      | 2,2               |     | 95                         | 150 |                   |     | 45                         | 70  |                   |        |                            |     |                   |  |
| 310    | 15 | 7  |        | 2,5               |     | 115                        | 190 |                   |     | 70                         | 110 |                   |        |                            |     |                   |  |
| 350    | 15 | 8  | x      | 2,9               |     | 140                        | 230 |                   |     | 95                         | 150 |                   |        | 40                         | 60  |                   |  |
| 390    | 15 | 9  |        | 3,2               |     | 165                        | 270 |                   |     | 115                        | 190 |                   |        | 65                         | 100 |                   |  |
| 430    | 15 | 10 | x      | 3,5               |     | 190                        | 310 |                   |     | 140                        | 230 |                   |        | 90                         | 140 |                   |  |
| 470    | 15 | 11 |        | 3,9               |     | 215                        | 350 |                   |     | 165                        | 270 |                   |        | 110                        | 180 |                   |  |
| 510    | 15 | 12 | x      | 4,1               |     | 240                        | 390 |                   |     | 190                        | 310 |                   |        | 135                        | 220 |                   |  |
| 550    | 15 | 13 |        | 4,4               |     | 265                        | 430 |                   |     | 215                        | 350 |                   |        | 160                        | 260 |                   |  |
| 590    | 15 | 14 | x      | 4,8               |     | 285                        | 470 |                   |     | 240                        | 390 |                   |        | 185                        | 300 |                   |  |
| 630    | 15 | 15 |        | 5,1               |     | 310                        | 510 |                   |     | 265                        | 430 |                   |        | 210                        | 340 |                   |  |
| 670    | 15 | 16 | x      | 5,4               |     | 335                        | 550 |                   |     | 285                        | 470 |                   |        | 235                        | 380 |                   |  |
| 710    | 15 | 17 |        | 5,8               |     | 360                        | 590 |                   |     | 310                        | 510 |                   |        | 260                        | 420 |                   |  |
| 750    | 15 | 18 | x      | 6,0               |     | 385                        | 630 |                   |     | 335                        | 550 |                   |        | 280                        | 460 |                   |  |
| 790    | 15 | 19 |        | 6,3               |     | 410                        | 670 |                   |     | 360                        | 590 |                   |        | 305                        | 500 |                   |  |
| 830    | 15 | 20 | x      | 6,7               |     | 430                        | 710 |                   |     | 385                        | 630 |                   |        | 330                        | 540 |                   |  |
| 870    | 15 | 21 |        | 7,0               |     | 455                        | 750 |                   |     | 410                        | 670 |                   |        | 355                        | 580 |                   |  |
| 910    | 15 | 22 | x      | 7,3               |     | 480                        | 790 |                   |     | 430                        | 710 |                   |        | 380                        | 620 |                   |  |
| 950    | 15 | 23 |        | 7,7               |     | 505                        | 830 |                   |     | 455                        | 750 |                   |        | 405                        | 660 |                   |  |

2) Suitable as top axis for central cross table mounting

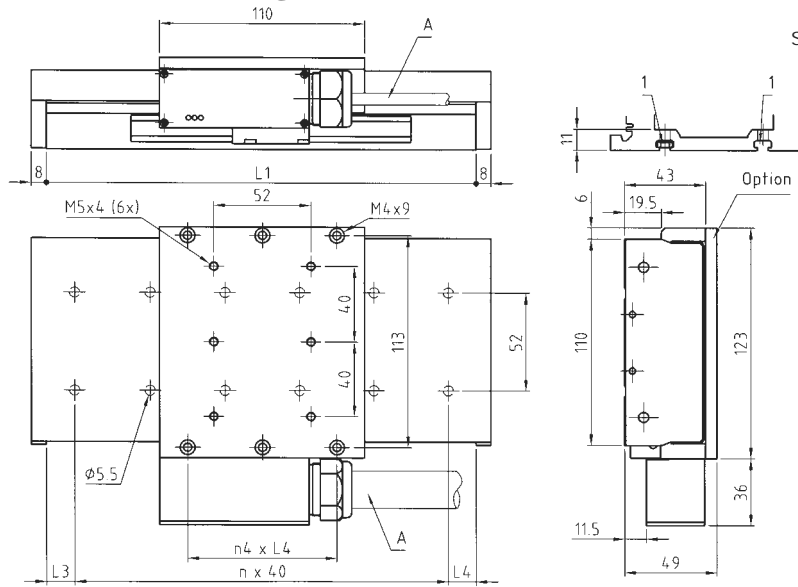
3) Maximum stroke between end stops:  
S1 with bellows (standard version)  
S2 without bellows (special version)

4) G<sub>U</sub> = Stationary mass of bottom part  
G<sub>O</sub> = Mobile mass of table top

# LTB 110.L1.F2xxxx-SC

# Rail guide tables with linear motor drive with steel cover

┌ slots in bottom part:  
Slot 1: for square nut DIN 562 M5



A Cable output for motor and measuring system. Flat ribbon cable 20 x 6.3 mm

Direction of travel: - <---> +

| Lenght |    |    | F20906 |                   |     |                        |                   | F21806 |     |                        |                   | F22706            |     |                        |                   |                   |
|--------|----|----|--------|-------------------|-----|------------------------|-------------------|--------|-----|------------------------|-------------------|-------------------|-----|------------------------|-------------------|-------------------|
| L1     | L3 | n  | 2) KN  | 4) G <sub>U</sub> | L2  | Stroke <sup>3)</sup> S | n <sub>4xL4</sub> | 5) GO  | L2  | Stroke <sup>3)</sup> S | n <sub>4xL4</sub> | 5) G <sub>O</sub> | L2  | Stroke <sup>3)</sup> S | n <sub>4xL4</sub> | 5) G <sub>O</sub> |
| mm     | mm | -  |        | kg                | mm  | mm                     |                   | kg     | mm  | mm                     |                   | kg                | mm  | mm                     |                   | kg                |
| 150    | 15 | 3  |        | 1,3               | 110 | 30                     | 2x40              | 1,2    | 190 |                        | 4x40              | 2,0               | 280 |                        | 6x40              | 2,8               |
| 190    | 15 | 4  | x      | 1,6               |     | 70                     |                   |        |     |                        |                   |                   |     |                        |                   |                   |
| 230    | 15 | 5  |        | 2,1               |     | 110                    |                   |        |     | 30                     |                   |                   |     |                        |                   |                   |
| 270    | 15 | 6  | x      | 2,3               |     | 150                    |                   |        |     | 70                     |                   |                   |     |                        |                   |                   |
| 310    | 15 | 7  |        | 2,6               |     | 190                    |                   |        |     | 110                    |                   |                   |     |                        |                   |                   |
| 350    | 15 | 8  | x      | 3,1               |     | 230                    |                   |        |     | 150                    |                   |                   |     | 60                     |                   |                   |
| 390    | 15 | 9  |        | 3,4               |     | 270                    |                   |        |     | 190                    |                   |                   |     | 100                    |                   |                   |
| 430    | 15 | 10 | x      | 3,7               |     | 310                    |                   |        |     | 230                    |                   |                   |     | 140                    |                   |                   |
| 470    | 15 | 11 |        | 4,1               |     | 350                    |                   |        |     | 270                    |                   |                   |     | 180                    |                   |                   |
| 510    | 15 | 12 | x      | 4,4               |     | 390                    |                   |        |     | 310                    |                   |                   |     | 220                    |                   |                   |
| 550    | 15 | 13 |        | 4,7               |     | 430                    |                   |        |     | 350                    |                   |                   |     | 260                    |                   |                   |
| 590    | 15 | 14 | x      | 5,1               |     | 470                    |                   |        |     | 390                    |                   |                   |     | 300                    |                   |                   |
| 630    | 15 | 15 |        | 5,4               |     | 510                    |                   |        |     | 430                    |                   |                   |     | 340                    |                   |                   |
| 670    | 15 | 16 | x      | 5,7               |     | 550                    |                   |        |     | 470                    |                   |                   |     | 380                    |                   |                   |
| 710    | 15 | 17 |        | 6,1               |     | 590                    |                   |        |     | 510                    |                   |                   |     | 420                    |                   |                   |
| 750    | 15 | 18 | x      | 6,4               |     | 630                    |                   |        |     | 550                    |                   |                   |     | 460                    |                   |                   |
| 790    | 15 | 19 |        | 6,7               |     | 670                    |                   |        |     | 590                    |                   |                   |     | 500                    |                   |                   |
| 830    | 15 | 20 | x      | 7,1               |     | 710                    |                   |        |     | 630                    |                   |                   |     | 540                    |                   |                   |
| 870    | 15 | 21 |        | 7,4               |     | 750                    |                   |        |     | 670                    |                   |                   |     | 580                    |                   |                   |
| 910    | 15 | 22 | x      | 7,7               |     | 790                    |                   |        |     | 710                    |                   |                   |     | 620                    |                   |                   |
| 950    | 15 | 23 |        | 8,2               |     | 830                    |                   |        |     | 750                    |                   |                   |     | 660                    |                   |                   |

<sup>2)</sup> Suitable as top axis for central cross table mounting

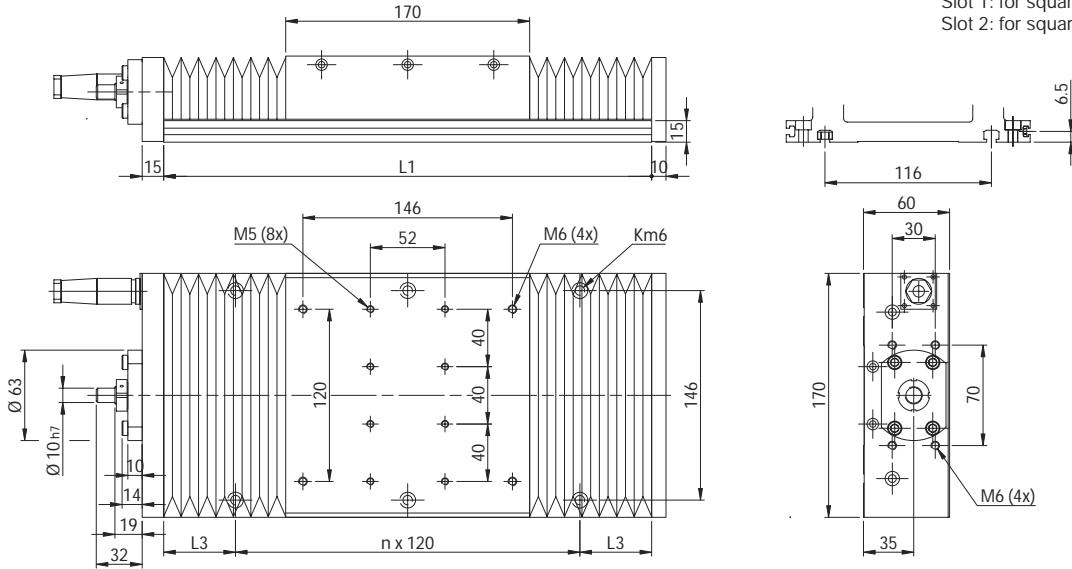
<sup>3)</sup> Maximum stroke between end stops

<sup>4)</sup> G<sub>U</sub> = Stationary mass of bottom part  
G<sub>O</sub> = Mobile mass of table top

# LTB 170.L1.SH/TN16xx-BL

# Rail guide tables with ball screw drive with or without bellows

T slots in bottom part:  
 Slot 1: for square nut DIN 562 M6  
 Slot 2: for square nut DIN 562 M4



1) Plug connection for limit and reference switches (optional)

Direction of travel: - <---> +

| Length |    |    | 2)<br>KN | Stroke<br>S1 | 3)<br>S2 | Screw data                 |                            |                            |                            | Weight <sup>4)</sup> |                |
|--------|----|----|----------|--------------|----------|----------------------------|----------------------------|----------------------------|----------------------------|----------------------|----------------|
| L1     | L3 | n  |          |              |          | SH1605<br>n <sub>max</sub> | TN1605<br>n <sub>max</sub> | TN1610<br>n <sub>max</sub> | TN1616<br>n <sub>max</sub> | G <sub>A</sub>       | G <sub>O</sub> |
| mm     |    |    | -        | mm           |          | 1/min                      |                            |                            |                            | kg                   |                |
| 220    | 50 | 1  | x        | 35           | 40       | 3120                       | 5620                       | 5620                       | 5620                       | 5,7                  | 2,3            |
| 280    | 20 | 2  |          | 80           | 100      | 3120                       | 5620                       | 5620                       | 5620                       | 6,4                  |                |
| 340    | 50 | 2  |          | 125          | 160      | 3120                       | 5620                       | 5620                       | 5620                       | 7,1                  |                |
| 400    | 20 | 3  | x        | 175          | 220      | 3120                       | 5620                       | 5620                       | 5620                       | 7,8                  |                |
| 460    | 50 | 3  | x        | 220          | 280      | 3120                       | 5620                       | 5620                       | 5620                       | 8,5                  |                |
| 520    | 20 | 4  |          | 260          | 340      | 3120                       | 5620                       | 5620                       | 5620                       | 9,2                  |                |
| 580    | 50 | 4  |          | 305          | 400      | 3120                       | 5620                       | 5620                       | 5620                       | 9,9                  |                |
| 640    | 20 | 5  | x        | 355          | 460      | 3120                       | 5620                       | 5620                       | 5620                       | 10,6                 |                |
| 700    | 50 | 5  | x        | 400          | 520      | 3120                       | 5620                       | 5620                       | 5620                       | 11,3                 |                |
| 760    | 20 | 6  |          | 445          | 580      | 3120                       | 4670                       | 4670                       | 4670                       | 12,0                 |                |
| 820    | 50 | 6  |          | 495          | 640      | 3120                       | 3900                       | 3900                       | 3900                       | 12,7                 |                |
| 880    | 20 | 7  | x        | 540          | 700      | 3120                       | 3300                       | 3300                       | 3300                       | 13,4                 |                |
| 940    | 50 | 7  | x        | 580          | 760      | 2830                       | 2830                       | 2830                       | 2830                       | 14,1                 |                |
| 1000   | 20 | 8  |          | 625          | 820      | 2460                       | 2460                       | 2460                       | 2460                       | 14,8                 |                |
| 1060   | 50 | 8  |          | 675          | 880      | 2150                       | 2150                       | 2150                       | 2150                       | 15,6                 |                |
| 1120   | 20 | 9  | x        | 720          | 940      | 1900                       | 1900                       | 1900                       | 1900                       | 16,3                 |                |
| 1180   | 50 | 9  | x        | 765          | 1000     | 1690                       | 1690                       | 1690                       | 1690                       | 17,0                 |                |
| 1240   | 20 | 10 |          | 815          | 1060     | 1510                       | 1510                       | 1510                       | 1510                       | 17,7                 |                |
| 1300   | 50 | 10 |          | 860          | 1120     | 1360                       | 1360                       | 1360                       | 1360                       | 18,4                 |                |
| 1360   | 20 | 11 | x        | 900          | 1180     | 1230                       | 1230                       | 1230                       | 1230                       | 19,1                 |                |
| 1420   | 50 | 11 | x        | 945          | 1240     | 1120                       | 1120                       | 1120                       | 1120                       | 19,8                 |                |
| 1480   | 20 | 12 |          | 995          | 1300     | 1020                       | 1020                       | 1020                       | 1020                       | 20,5                 |                |
| 1540   | 50 | 12 |          | 1040         | 1360     | 930                        | 930                        | 930                        | 930                        | 21,2                 |                |
| 1600   | 20 | 13 | x        | 1085         | 1420     | 860                        | 860                        | 860                        | 860                        | 21,9                 |                |

2) Suitable as top axis for central cross table mounting

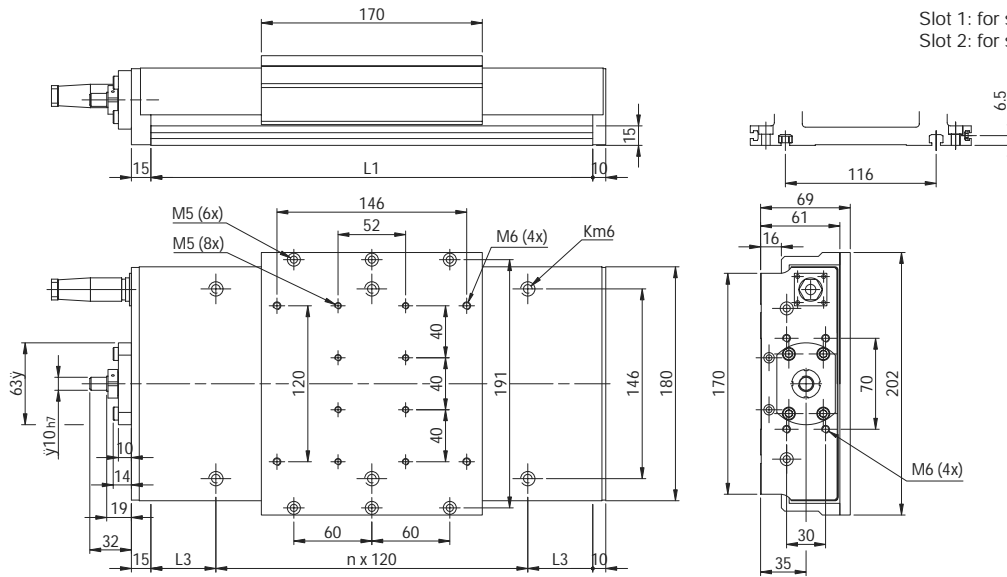
3) Maximum stroke between end stops:  
 S1 with bellows (standard version)  
 S2 without bellows (special version)

4) G<sub>A</sub> = Total weight of table  
 G<sub>O</sub> = Weight of mobile mass of table top

# LTB 170.L1.SH/TN16xx-SC

# Rail guide tables with ball screw drive with steel cover

Slots in bottom part:  
Slot 1: for square nut DIN 562 M6  
Slot 2: for square nut DIN 562 M4



1) Plug connection for limit and reference switches (optional)

Direction of travel: - <----> +

| Length |    |    | 2)<br>KN | Stroke <sup>3)</sup><br>S | Screw data                 |                            |                            |                            | Weight <sup>4)</sup> |                |
|--------|----|----|----------|---------------------------|----------------------------|----------------------------|----------------------------|----------------------------|----------------------|----------------|
| L1     | L3 | n  |          |                           | SH1605<br>n <sub>max</sub> | TN1605<br>n <sub>max</sub> | TN1610<br>n <sub>max</sub> | TN1616<br>n <sub>max</sub> | G <sub>A</sub>       | G <sub>O</sub> |
| mm     |    |    | -        | mm                        | 1/min                      |                            |                            |                            | kg                   |                |
| 220    | 50 | 1  | x        | 40                        | 3120                       | 5620                       | 5620                       | 5620                       | 6,9                  | 3,3            |
| 280    | 20 | 2  |          | 100                       | 3120                       | 5620                       | 5620                       | 5620                       | 7,7                  |                |
| 340    | 50 | 2  |          | 160                       | 3120                       | 5620                       | 5620                       | 5620                       | 8,4                  |                |
| 400    | 20 | 3  | x        | 220                       | 3120                       | 5620                       | 5620                       | 5620                       | 9,2                  |                |
| 460    | 50 | 3  | x        | 280                       | 3120                       | 5620                       | 5620                       | 5620                       | 9,9                  |                |
| 520    | 20 | 4  |          | 340                       | 3120                       | 5620                       | 5620                       | 5620                       | 10,7                 |                |
| 580    | 50 | 4  |          | 400                       | 3120                       | 5620                       | 5620                       | 5620                       | 11,5                 |                |
| 640    | 20 | 5  | x        | 460                       | 3120                       | 5620                       | 5620                       | 5620                       | 12,2                 |                |
| 700    | 50 | 5  | x        | 520                       | 3120                       | 5620                       | 5620                       | 5620                       | 13,0                 |                |
| 760    | 20 | 6  |          | 580                       | 3120                       | 4670                       | 4670                       | 4670                       | 13,8                 |                |
| 820    | 50 | 6  |          | 640                       | 3120                       | 3900                       | 3900                       | 3900                       | 14,5                 |                |
| 880    | 20 | 7  | x        | 700                       | 3120                       | 3300                       | 3300                       | 330                        | 15,3                 |                |
| 940    | 50 | 7  | x        | 760                       | 2830                       | 2830                       | 2830                       | 2830                       | 16,0                 |                |
| 1000   | 20 | 8  |          | 820                       | 2460                       | 2460                       | 2460                       | 2460                       | 16,8                 |                |
| 1060   | 50 | 8  |          | 880                       | 2150                       | 2150                       | 2150                       | 2150                       | 17,6                 |                |
| 1120   | 20 | 9  | x        | 940                       | 1900                       | 1900                       | 1900                       | 1900                       | 18,3                 |                |
| 1180   | 50 | 9  | x        | 1000                      | 1690                       | 1690                       | 1690                       | 1690                       | 19,1                 |                |
| 1240   | 20 | 10 |          | 1060                      | 1510                       | 1510                       | 1510                       | 1510                       | 19,9                 |                |
| 1300   | 50 | 10 |          | 1120                      | 1360                       | 1360                       | 1360                       | 1360                       | 20,6                 |                |
| 1360   | 20 | 11 | x        | 1180                      | 1230                       | 1230                       | 1230                       | 1230                       | 21,4                 |                |
| 1420   | 50 | 11 | x        | 1240                      | 1120                       | 1120                       | 1120                       | 1120                       | 22,1                 |                |
| 1480   | 20 | 12 |          | 1300                      | 1020                       | 1020                       | 1020                       | 1020                       | 22,9                 |                |
| 1540   | 50 | 12 |          | 1360                      | 930                        | 930                        | 930                        | 930                        | 23,7                 |                |
| 1600   | 20 | 13 | x        | 1420                      | 860                        | 860                        | 860                        | 860                        | 24,4                 |                |

2) Suitable as top axis for central cross table mounting

3) Maximum stroke between end stops

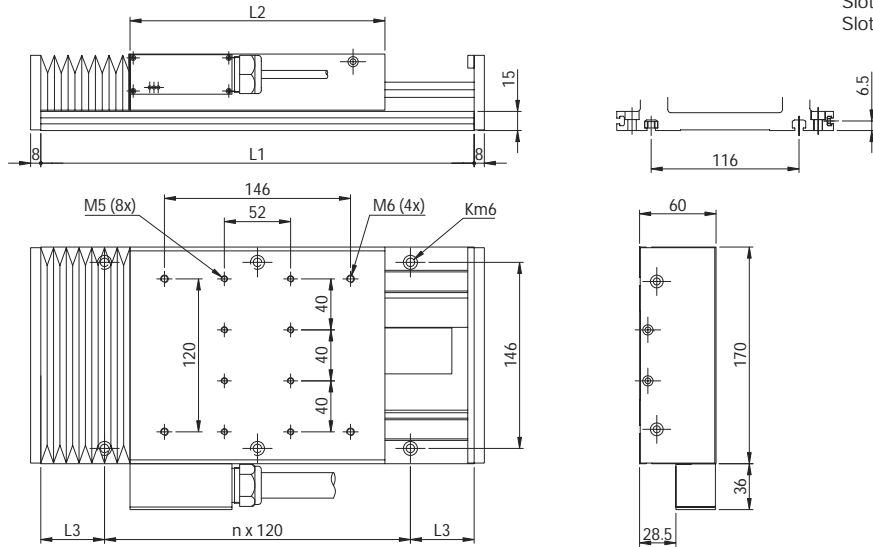
4) G<sub>A</sub> = Stationary mass of bottom part  
G<sub>O</sub> = Mobile mass of table top



# LTB 170.L1.F2xxxx-BL

# Rail guide tables with linear motor drive with or without bellows

Slots in bottom part:  
 Slot 1: for square nut DIN 562 M6  
 Slot 2: for square nut DIN 562 M4



A Cable output for motor and measuring system. Flat ribbon cable 20 x 6.3 mm

Direction of travel: - <---> +

| Lenght |    |    | F21806 |                   |     |                      |      |                   | F22706 |                      |      |                   |
|--------|----|----|--------|-------------------|-----|----------------------|------|-------------------|--------|----------------------|------|-------------------|
| L1     | L3 | n  | 2) KN  | 4) G <sub>U</sub> | L2  | Stroke <sup>3)</sup> |      | 5) G <sub>O</sub> | L2     | Stroke <sup>3)</sup> |      | 5) G <sub>O</sub> |
| mm     |    | -  |        | kg                | mm  | S1                   | S2   | kg                | mm     | S1                   | S2   | kg                |
| 280    | 20 | 2  |        | 4,5               | 200 | 55                   | 70   | 3,0               | 280    |                      |      | 3,9               |
| 340    | 50 | 2  |        | 5,3               |     | 105                  | 130  |                   |        | 40                   | 50   |                   |
| 400    | 20 | 3  | x      | 6,2               |     | 150                  | 190  |                   |        | 90                   | 110  |                   |
| 460    | 50 | 3  | x      | 7,1               |     | 195                  | 250  |                   |        | 135                  | 170  |                   |
| 520    | 20 | 4  |        | 8,0               |     | 240                  | 310  |                   |        | 180                  | 230  |                   |
| 580    | 50 | 4  |        | 8,9               |     | 285                  | 370  |                   |        | 220                  | 290  |                   |
| 640    | 20 | 5  | x      | 9,8               |     | 330                  | 430  |                   |        | 270                  | 350  |                   |
| 700    | 50 | 5  | x      | 10,7              |     | 375                  | 490  |                   |        | 315                  | 410  |                   |
| 760    | 20 | 6  |        | 11,5              |     | 425                  | 550  |                   |        | 360                  | 470  |                   |
| 820    | 50 | 6  |        | 12,4              |     | 470                  | 610  |                   |        | 410                  | 530  |                   |
| 880    | 20 | 7  | x      | 13,3              |     | 515                  | 670  |                   |        | 455                  | 590  |                   |
| 940    | 50 | 7  | x      | 14,2              |     | 565                  | 730  |                   |        | 500                  | 650  |                   |
| 1000   | 20 | 8  |        | 15,1              |     | 605                  | 790  |                   |        | 545                  | 710  |                   |
| 1060   | 50 | 8  |        | 16,0              |     | 650                  | 850  |                   |        | 590                  | 770  |                   |
| 1120   | 20 | 9  | x      | 16,9              |     | 695                  | 910  |                   |        | 635                  | 830  |                   |
| 1180   | 50 | 9  | x      | 17,7              |     | 745                  | 970  |                   |        | 680                  | 890  |                   |
| 1240   | 20 | 10 |        | 18,6              |     | 790                  | 1030 |                   |        | 730                  | 950  |                   |
| 1300   | 50 | 10 |        | 19,5              |     | 835                  | 1090 |                   |        | 775                  | 1010 |                   |
| 1360   | 20 | 11 | x      | 20,4              |     | 885                  | 1150 |                   |        | 820                  | 1070 |                   |
| 1420   | 50 | 11 | x      | 21,3              |     | 925                  | 1210 |                   |        | 865                  | 1130 |                   |
| 1480   | 20 | 12 |        | 22,2              |     | 970                  | 1270 |                   |        | 910                  | 1190 |                   |
| 1540   | 50 | 12 |        | 23,1              |     | 1015                 | 1330 |                   |        | 955                  | 1250 |                   |
| 1600   | 20 | 13 | x      | 23,9              |     | 1065                 | 1390 |                   |        | 1000                 | 1310 |                   |

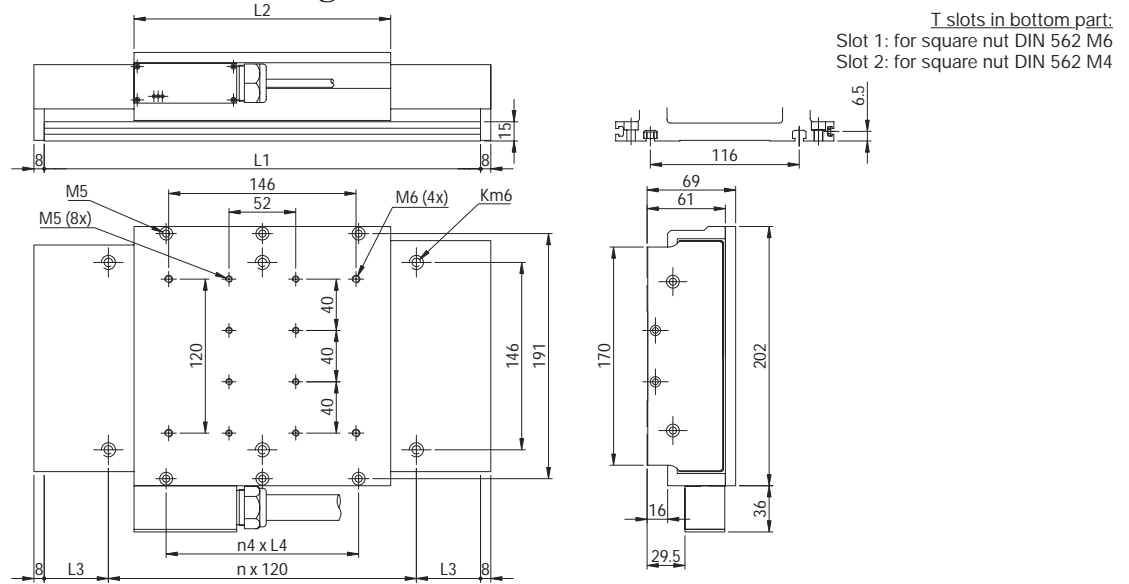
2) Suitable as top axis for central cross table mounting

3) Maximum stroke between end stops:  
 S1 with bellows (standard version)  
 S2 without bellows (special version)

4) G<sub>U</sub> = Stationary mass of bottom part  
 G<sub>O</sub> = Mobile mass of table top

# LTB 170.L1.F2xxxx-SC

# Rail guide tables with linear motor drive with steel cover



A Cable output for motor and measuring system. Flat ribbon cable 20 x 6.3 mm

Direction of travel: - <----> +

| Lenght |    |    | F21806 |                   |     |                        |                   | F22706            |     |                        |                   |                   |
|--------|----|----|--------|-------------------|-----|------------------------|-------------------|-------------------|-----|------------------------|-------------------|-------------------|
| L1     | L3 | n  | 2) KN  | 4) G <sub>U</sub> | L2  | Stroke <sup>3)</sup> S | n <sub>4xL4</sub> | 5) G <sub>O</sub> | L2  | Stroke <sup>3)</sup> S | n <sub>4xL4</sub> | 5) G <sub>O</sub> |
| mm     |    | -  |        | kg                | mm  |                        |                   | kg                | mm  |                        |                   | kg                |
| 280    | 20 | 2  |        | 4,5               | 200 | 70                     | 2x75              | 4,2               | 280 |                        | 3x75              | 5,6               |
| 340    | 50 | 2  |        | 5,4               |     | 130                    |                   |                   |     | 50                     |                   |                   |
| 400    | 20 | 3  | x      | 6,3               |     | 190                    |                   |                   |     | 110                    |                   |                   |
| 460    | 50 | 3  | x      | 7,2               |     | 250                    |                   |                   |     | 170                    |                   |                   |
| 520    | 20 | 4  |        | 8,1               |     | 310                    |                   |                   |     | 230                    |                   |                   |
| 580    | 50 | 4  |        | 9,0               |     | 370                    |                   |                   |     | 290                    |                   |                   |
| 640    | 20 | 5  | x      | 9,8               |     | 430                    |                   |                   |     | 350                    |                   |                   |
| 700    | 50 | 5  | x      | 10,7              |     | 490                    |                   |                   |     | 410                    |                   |                   |
| 760    | 20 | 6  |        | 11,6              |     | 550                    |                   |                   |     | 470                    |                   |                   |
| 820    | 50 | 6  |        | 12,5              |     | 610                    |                   |                   |     | 530                    |                   |                   |
| 880    | 20 | 7  | x      | 13,4              |     | 670                    |                   |                   |     | 590                    |                   |                   |
| 940    | 50 | 7  | x      | 14,3              |     | 730                    |                   |                   |     | 650                    |                   |                   |
| 1000   | 20 | 8  |        | 15,2              |     | 790                    |                   |                   |     | 710                    |                   |                   |
| 1060   | 50 | 8  |        | 16,1              |     | 850                    |                   |                   |     | 770                    |                   |                   |
| 1120   | 20 | 9  | x      | 17,0              |     | 910                    |                   |                   |     | 830                    |                   |                   |
| 1180   | 50 | 9  | x      | 17,9              |     | 970                    |                   |                   |     | 890                    |                   |                   |
| 1240   | 20 | 10 |        | 18,8              |     | 1030                   |                   |                   |     | 950                    |                   |                   |
| 1300   | 50 | 10 |        | 19,7              |     | 1090                   |                   |                   |     | 1010                   |                   |                   |
| 1360   | 20 | 11 | x      | 20,5              |     | 1150                   |                   |                   |     | 1070                   |                   |                   |
| 1420   | 50 | 11 | x      | 21,4              |     | 1210                   |                   |                   |     | 1130                   |                   |                   |
| 1480   | 20 | 12 |        | 22,3              |     | 1270                   |                   |                   |     | 1190                   |                   |                   |
| 1540   | 50 | 12 |        | 23,2              |     | 1330                   |                   |                   |     | 1250                   |                   |                   |
| 1600   | 20 | 13 | x      | 24,1              |     | 1390                   |                   |                   |     | 1310                   |                   |                   |

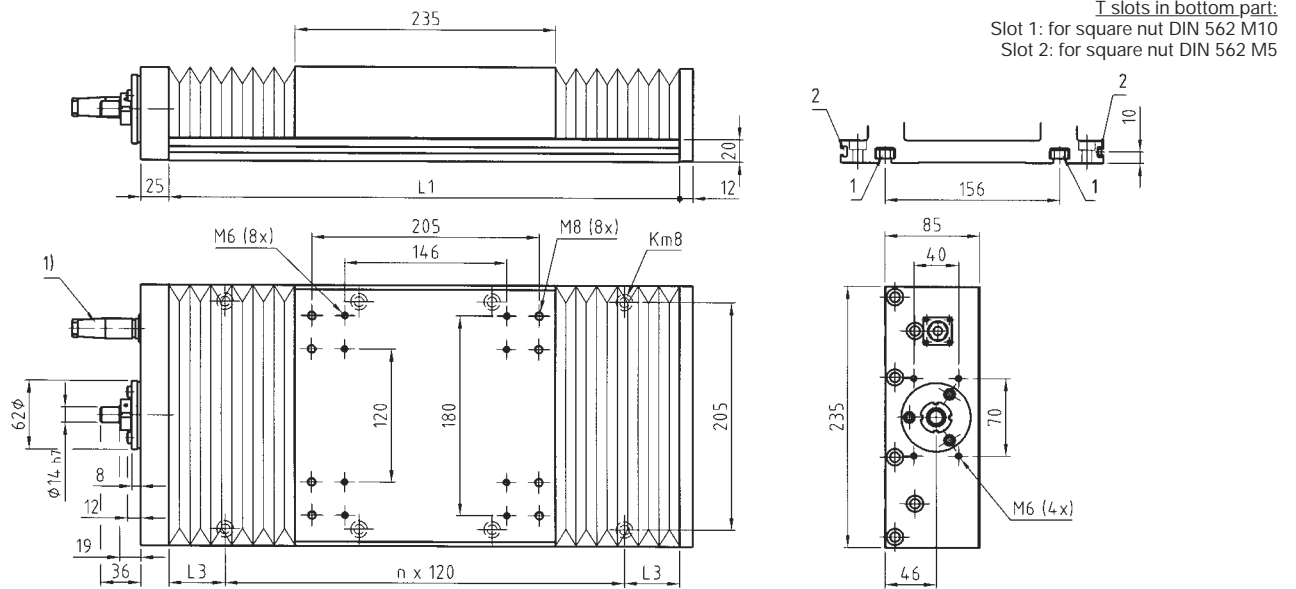
<sup>2)</sup> Suitable as top axis for central cross table mounting

<sup>3)</sup> Maximum stroke between end stops

<sup>4)</sup> G<sub>U</sub> = Stationary mass of bottom part  
<sup>5)</sup> G<sub>O</sub> = Mobile mass of table top

# LTB 235.L1.SX/TN/TL25xx-BL

# Rail guide tables with ball screw drive with or without bellows



1) Plug connection for limit and reference switches (optional)

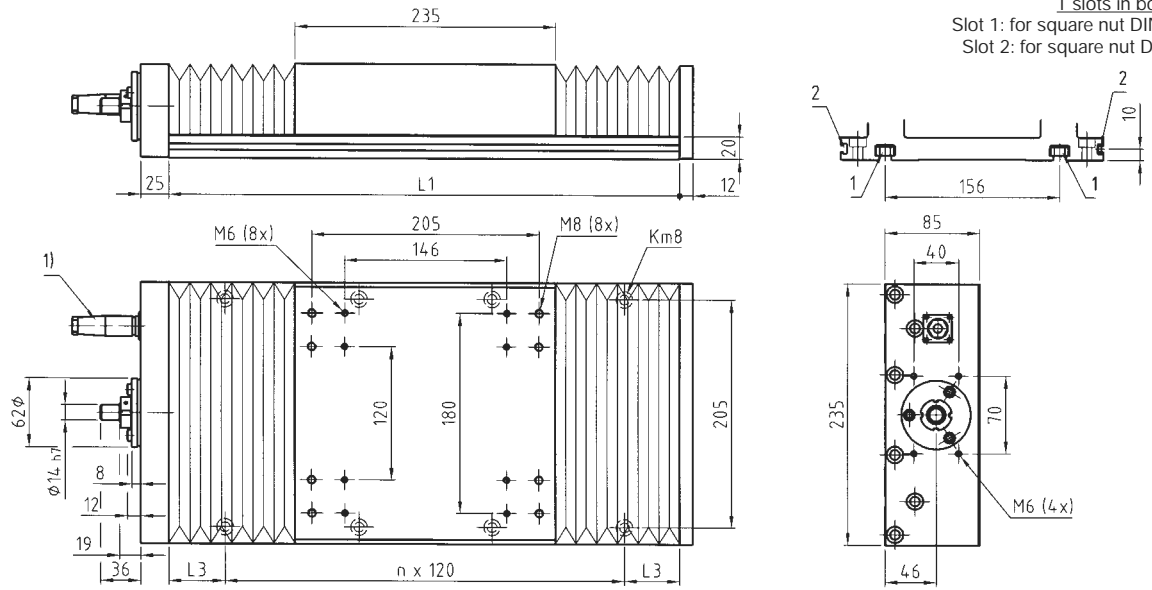
Direction of travel: - <---> +

| Length |    | Screw data |       |           |       |                         |                         |                         |                                   |                      |                |
|--------|----|------------|-------|-----------|-------|-------------------------|-------------------------|-------------------------|-----------------------------------|----------------------|----------------|
| L1     | L3 | n          | 2) KN | Stroke S1 | 3) S2 | SX2505 n <sub>max</sub> | TN2505 n <sub>max</sub> | SX2510 n <sub>max</sub> | TN2510+2520+2525 n <sub>max</sub> | Weight <sup>4)</sup> |                |
| mm     |    |            |       | mm        |       | 1/min                   |                         |                         |                                   | G <sub>A</sub>       | G <sub>O</sub> |
|        |    |            |       |           |       |                         |                         |                         |                                   |                      | kg             |
| 280    | 20 | 2          |       | 35        | 35    | 2000                    | 3600                    | 2000                    | 3600                              | 14,5                 | 5,9            |
| 340    | 50 | 2          |       | 85        | 95    | 2000                    | 3600                    | 2000                    | 3600                              | 15,9                 |                |
| 400    | 20 | 3          | x     | 135       | 155   | 2000                    | 3600                    | 2000                    | 3600                              | 17,2                 |                |
| 460    | 50 | 3          | x     | 185       | 215   | 2000                    | 3600                    | 2000                    | 3600                              | 18,6                 |                |
| 520    | 20 | 4          |       | 235       | 275   | 2000                    | 3600                    | 2000                    | 3600                              | 20,0                 |                |
| 580    | 50 | 4          |       | 285       | 335   | 2000                    | 3600                    | 2000                    | 3600                              | 21,3                 |                |
| 640    | 20 | 5          | x     | 340       | 395   | 2000                    | 3600                    | 2000                    | 3600                              | 22,7                 |                |
| 700    | 50 | 5          | x     | 385       | 455   | 2000                    | 3600                    | 2000                    | 3600                              | 24,1                 |                |
| 760    | 20 | 6          |       | 435       | 515   | 2000                    | 3600                    | 2000                    | 3600                              | 25,4                 |                |
| 820    | 50 | 6          |       | 485       | 575   | 2000                    | 3600                    | 2000                    | 3600                              | 26,8                 |                |
| 880    | 20 | 7          | x     | 535       | 635   | 2000                    | 3600                    | 2000                    | 3600                              | 28,1                 |                |
| 940    | 50 | 7          | x     | 585       | 695   | 2000                    | 3600                    | 2000                    | 3600                              | 29,5                 |                |
| 1000   | 20 | 8          |       | 635       | 755   | 2000                    | 3600                    | 2000                    | 3600                              | 30,9                 |                |
| 1060   | 50 | 8          |       | 690       | 815   | 2000                    | 3600                    | 2000                    | 3600                              | 32,2                 |                |
| 1120   | 20 | 9          | x     | 740       | 875   | 2000                    | 3390                    | 2000                    | 3390                              | 33,6                 |                |
| 1180   | 50 | 9          | x     | 790       | 935   | 2000                    | 3010                    | 2000                    | 3010                              | 34,9                 |                |
| 1240   | 20 | 10         |       | 840       | 995   | 2000                    | 2690                    | 2000                    | 2690                              | 36,3                 |                |
| 1300   | 50 | 10         |       | 890       | 1055  | 2000                    | 2410                    | 2000                    | 2410                              | 37,7                 |                |
| 1360   | 20 | 11         | x     | 935       | 1115  | 2000                    | 2180                    | 2000                    | 2180                              | 39,0                 |                |
| 1420   | 50 | 11         | x     | 990       | 1175  | 1990                    | 1980                    | 1880                    | 1980                              | 40,4                 |                |
| 1480   | 20 | 12         |       | 1040      | 1235  | 1810                    | 1800                    | 1710                    | 1800                              | 41,8                 |                |
| 1540   | 50 | 12         |       | 1090      | 1295  | 1660                    | 1650                    | 1570                    | 1650                              | 43,1                 |                |
| 1600   | 20 | 13         | x     | 1140      | 1355  | 1530                    | 1520                    | 1440                    | 1520                              | 44,5                 |                |
| 1660   | 50 | 13         | x     | 1190      | 1415  | 1410                    | 1400                    | 1330                    | 1400                              | 45,8                 |                |
| 1720   | 20 | 14         |       | 1240      | 1475  | 1300                    | 1290                    | 1230                    | 1290                              | 47,2                 |                |
| 1780   | 50 | 14         |       | 1290      | 1535  | 1210                    | 1200                    | 1140                    | 1200                              | 48,6                 |                |
| 1840   | 20 | 15         | x     | 1345      | 1595  | 1120                    | 1120                    | 1060                    | 1120                              | 49,9                 |                |
| 1900   | 50 | 15         | x     | 1395      | 1655  | 1050                    | 1040                    | 990                     | 1040                              | 51,3                 |                |
| 1960   | 20 | 16         |       | 1445      | 1715  | 980                     | 970                     | 920                     | 970                               | 52,7                 |                |
| 2020   | 50 | 16         |       | 1490      | 1775  | 920                     | 920                     | 870                     | 910                               | 54,0                 |                |

2) Suitable as top axis for central cross table mounting

3) Maximum stroke between end stops:  
S1 with bellows (standard version)  
S2 without bellows (special version)

4) G<sub>A</sub> = Total weight of table  
G<sub>O</sub> = Weight of mobile mass of table top



Slots in bottom part:  
Slot 1: for square nut DIN 562 M10  
Slot 2: for square nut DIN 562 M5

1) Plug connection for limit and reference switches (optional)

Direction of travel: - <----> +

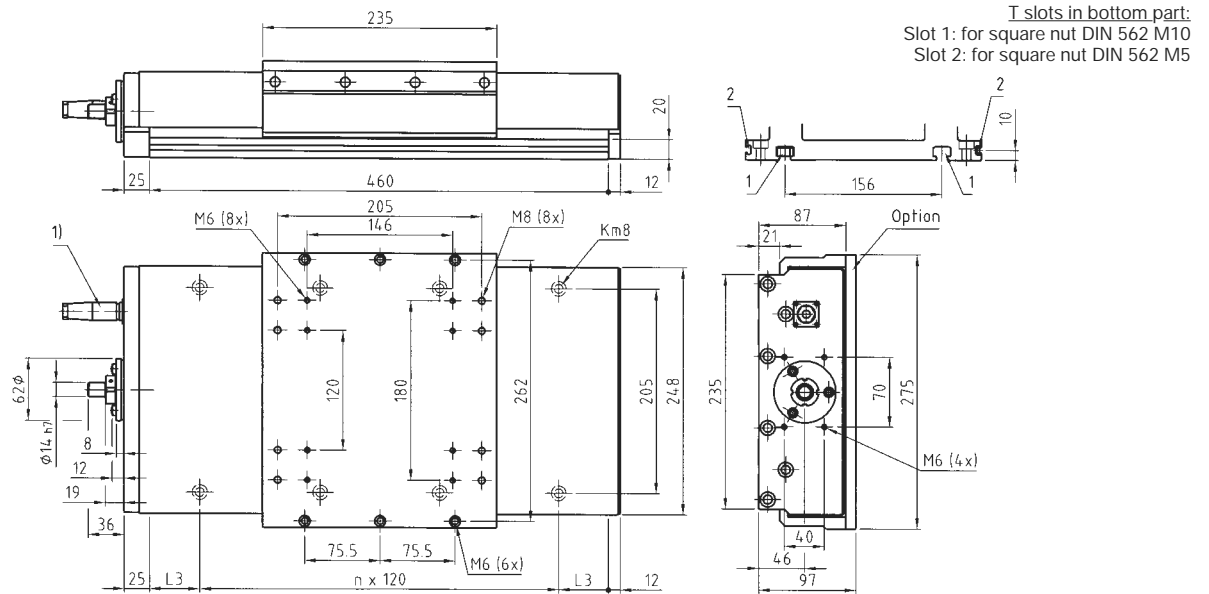
| Length |    |    | 2)<br>KN | Stroke<br>S1 | 3)<br>S2 | Screw data       |                  |                  |                  | Weight <sup>4)</sup> |                |
|--------|----|----|----------|--------------|----------|------------------|------------------|------------------|------------------|----------------------|----------------|
| L1     | L3 | n  |          |              |          | n <sub>max</sub> | n <sub>max</sub> | n <sub>max</sub> | n <sub>max</sub> | G <sub>A</sub>       | G <sub>O</sub> |
| mm     |    |    | -        | mm           |          | 1/min            |                  |                  |                  | kg                   |                |
| 2080   | 20 | 17 | x        | 1540         | 1835     | 860              | 860              | 810              | 860              | 55,4                 | 5,9            |
| 2140   | 50 | 17 | x        | 1590         | 1895     | 810              | 800              | 760              | 800              | 56,7                 |                |
| 2200   | 20 | 18 |          | 1645         | 1955     | 760              | 760              | 720              | 760              | 58,1                 |                |
| 2260   | 50 | 18 |          | 1695         | 2015     | 720              | 720              | 680              | 720              | 59,5                 |                |
| 2320   | 20 | 19 | x        | 1745         | 2075     | 680              | 608              | 640              | 680              | 60,8                 |                |
| 2380   | 50 | 19 | x        | 1795         | 2135     | 640              | 640              | 610              | 640              | 62,2                 |                |
| 2440   | 20 | 20 |          | 1845         | 2195     | 610              | 610              | 580              | 610              | 63,6                 |                |
| 2500   | 50 | 20 |          | 1895         | 2255     | 580              | 580              | 550              | 580              | 64,9                 |                |
| 2560   | 20 | 21 | x        | 1945         | 2315     | 550              | 550              | 520              | 550              | 66,3                 |                |
| 2620   | 50 | 21 | x        | 2000         | 2375     | 520              | 520              | 490              | 520              | 67,6                 |                |
| 2680   | 20 | 22 |          | 2045         | 2435     | 500              | 500              | 470              | 500              | 69,0                 |                |
| 2740   | 50 | 22 |          | 1095         | 2495     | 480              | 470              | 450              | 470              | 70,4                 |                |
| 2800   | 20 | 23 | x        | 2145         | 2555     | 450              | 450              | 430              | 450              | 71,7                 |                |
| 2860   | 50 | 23 | x        | 2195         | 2615     | 430              | 430              | 410              | 430              | 73,1                 |                |

2) Suitable as top axis for central cross table mounting

3) Maximum stroke between end stops:  
S1 with bellows (standard version)  
S2 without bellows (special version)

4) G<sub>A</sub> = Total weight of table  
G<sub>O</sub> = Weight of mobile mass of table top

# LTB 235.L1.SX/TN/TL25xx-SC Rail guide tables with ball screw drive with steel cover



1) Plug connection for limit and reference switches (optional)

Direction of travel: - <---> +

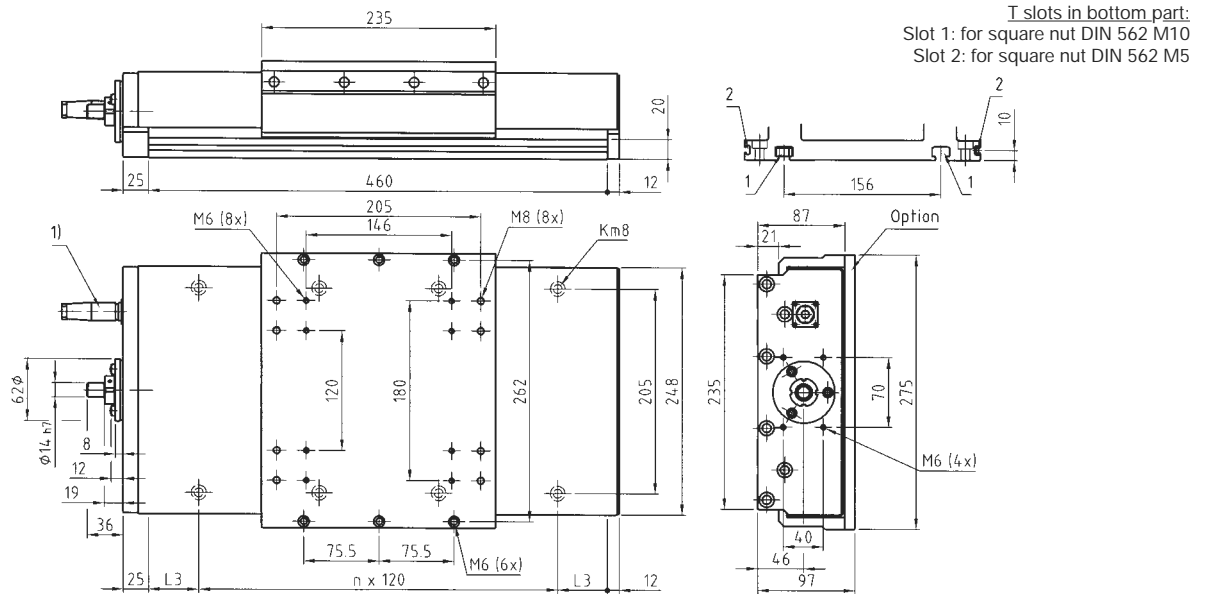
| Lenght |    | Screw data |       |                        |                            |                            |                            |                                      | Weight <sup>4)</sup> |                |
|--------|----|------------|-------|------------------------|----------------------------|----------------------------|----------------------------|--------------------------------------|----------------------|----------------|
| L1     | L3 | n          | 2) KN | Stroke <sup>3)</sup> S | SX2505<br>n <sub>max</sub> | TN2505<br>n <sub>max</sub> | SX2510<br>n <sub>max</sub> | TN2510+2520+2525<br>n <sub>max</sub> | G <sub>A</sub>       | G <sub>O</sub> |
| mm     |    | -          |       | mm                     | 1/min                      |                            |                            |                                      | kg                   |                |
| 280    | 20 | 2          |       | 35                     | 2000                       | 3600                       | 2000                       | 3600                                 | 18,1                 | 8,5            |
| 340    | 50 | 2          |       | 95                     | 2000                       | 3600                       | 2000                       | 3600                                 | 19,6                 |                |
| 400    | 20 | 3          | x     | 155                    | 2000                       | 3600                       | 2000                       | 3600                                 | 21,1                 |                |
| 460    | 50 | 3          | x     | 215                    | 2000                       | 3600                       | 2000                       | 3600                                 | 22,7                 |                |
| 520    | 20 | 4          |       | 275                    | 2000                       | 3600                       | 2000                       | 3600                                 | 24,2                 |                |
| 580    | 50 | 4          |       | 335                    | 2000                       | 3600                       | 2000                       | 3600                                 | 25,7                 |                |
| 640    | 20 | 5          | x     | 395                    | 2000                       | 3600                       | 2000                       | 3600                                 | 27,3                 |                |
| 700    | 50 | 5          | x     | 455                    | 2000                       | 3600                       | 2000                       | 3600                                 | 28,8                 |                |
| 760    | 20 | 6          |       | 515                    | 2000                       | 3600                       | 2000                       | 3600                                 | 30,3                 |                |
| 820    | 50 | 6          |       | 575                    | 2000                       | 3600                       | 2000                       | 3600                                 | 31,8                 |                |
| 880    | 20 | 7          | x     | 635                    | 2000                       | 3600                       | 2000                       | 3600                                 | 33,4                 |                |
| 940    | 50 | 7          | x     | 695                    | 2000                       | 3600                       | 2000                       | 3600                                 | 34,9                 |                |
| 1000   | 20 | 8          |       | 755                    | 2000                       | 3600                       | 2000                       | 3600                                 | 36,4                 |                |
| 1060   | 50 | 8          |       | 815                    | 2000                       | 3600                       | 2000                       | 3600                                 | 37,9                 |                |
| 1120   | 20 | 9          | x     | 875                    | 2000                       | 3390                       | 2000                       | 3380                                 | 39,5                 |                |
| 1180   | 50 | 9          | x     | 935                    | 2000                       | 3010                       | 2000                       | 2990                                 | 41,0                 |                |
| 1240   | 20 | 10         |       | 995                    | 2000                       | 2690                       | 2000                       | 2670                                 | 42,5                 |                |
| 1300   | 50 | 10         |       | 1055                   | 2000                       | 2410                       | 2000                       | 2400                                 | 44,1                 |                |
| 1360   | 20 | 11         | x     | 1115                   | 2000                       | 2180                       | 2000                       | 2170                                 | 45,6                 |                |
| 1420   | 50 | 11         | x     | 1175                   | 1990                       | 1980                       | 1880                       | 1970                                 | 47,1                 |                |
| 1480   | 20 | 12         |       | 1235                   | 1810                       | 1800                       | 1710                       | 1800                                 | 48,6                 |                |
| 1540   | 50 | 12         |       | 1295                   | 1660                       | 1650                       | 1570                       | 1640                                 | 50,2                 |                |
| 1600   | 20 | 13         | x     | 1355                   | 1530                       | 1520                       | 1440                       | 1510                                 | 51,7                 |                |
| 1660   | 50 | 13         | x     | 1415                   | 1410                       | 1400                       | 1330                       | 1390                                 | 53,2                 |                |
| 1720   | 20 | 14         |       | 1475                   | 1300                       | 1290                       | 1230                       | 1290                                 | 54,7                 |                |
| 1780   | 50 | 14         |       | 1535                   | 1210                       | 1200                       | 1140                       | 1200                                 | 56,3                 |                |
| 1840   | 20 | 15         | x     | 1595                   | 1120                       | 1120                       | 1060                       | 1110                                 | 57,8                 |                |
| 1900   | 50 | 15         | x     | 1655                   | 1050                       | 1040                       | 990                        | 1040                                 | 59,3                 |                |
| 1960   | 20 | 16         |       | 1715                   | 980                        | 970                        | 920                        | 970                                  | 60,9                 |                |
| 2020   | 50 | 16         |       | 1775                   | 920                        | 910                        | 870                        | 910                                  | 62,4                 |                |

<sup>2)</sup> Suitable as top axis for central cross table mounting

<sup>3)</sup> Maximum stroke between end stops

<sup>4)</sup> G<sub>A</sub> = Total weight of table  
G<sub>O</sub> = Weight of mobile mass of table top

# LTB 235.L1.SX/TN/TL25xx-SC Rail guide tables with ball screw drive with steel cover



1) Plug connection for limit and reference switches (optional)

Direction of travel: - <----> +

| Length |    |    | 2)<br>KN | Stroke <sup>3)</sup><br>S | Screw data       |                  |                  |                  | Weight <sup>4)</sup> |                |
|--------|----|----|----------|---------------------------|------------------|------------------|------------------|------------------|----------------------|----------------|
| L1     | L3 | n  |          |                           | SX2505           | TN2505           | SX2510           | TN2510+2520+2525 | G <sub>A</sub>       | G <sub>O</sub> |
| mm     |    |    |          | mm                        | n <sub>max</sub> | n <sub>max</sub> | n <sub>max</sub> | n <sub>max</sub> | kg                   |                |
| 2080   | 20 | 17 | x        | 1835                      | 860              | 860              | 810              | 860              | 63,9                 | 8,5            |
| 2140   | 50 | 17 | x        | 1895                      | 810              | 800              | 760              | 800              | 65,4                 |                |
| 2200   | 20 | 18 |          | 1955                      | 760              | 760              | 720              | 760              | 67,0                 |                |
| 2260   | 50 | 18 |          | 2015                      | 720              | 720              | 680              | 720              | 68,5                 |                |
| 2320   | 20 | 19 | x        | 2075                      | 680              | 680              | 640              | 680              | 70,0                 |                |
| 2380   | 50 | 19 | x        | 2135                      | 640              | 640              | 610              | 640              | 71,5                 |                |
| 2440   | 20 | 20 |          | 2195                      | 610              | 610              | 580              | 610              | 73,1                 |                |
| 2500   | 50 | 20 |          | 2255                      | 580              | 580              | 550              | 580              | 74,6                 |                |
| 2560   | 20 | 21 | x        | 2315                      | 550              | 550              | 520              | 550              | 76,1                 |                |
| 2620   | 50 | 21 | x        | 2375                      | 520              | 520              | 490              | 520              | 77,7                 |                |
| 2680   | 20 | 22 |          | 2435                      | 500              | 500              | 470              | 500              | 79,2                 |                |
| 2740   | 50 | 22 |          | 2495                      | 480              | 470              | 450              | 470              | 80,7                 |                |
| 2800   | 20 | 23 | x        | 2555                      | 450              | 450              | 430              | 450              | 82,2                 |                |
| 2860   | 50 | 23 | x        | 2615                      | 430              | 430              | 410              | 430              | 83,8                 |                |

2) Suitable as top axis for central cross table mounting

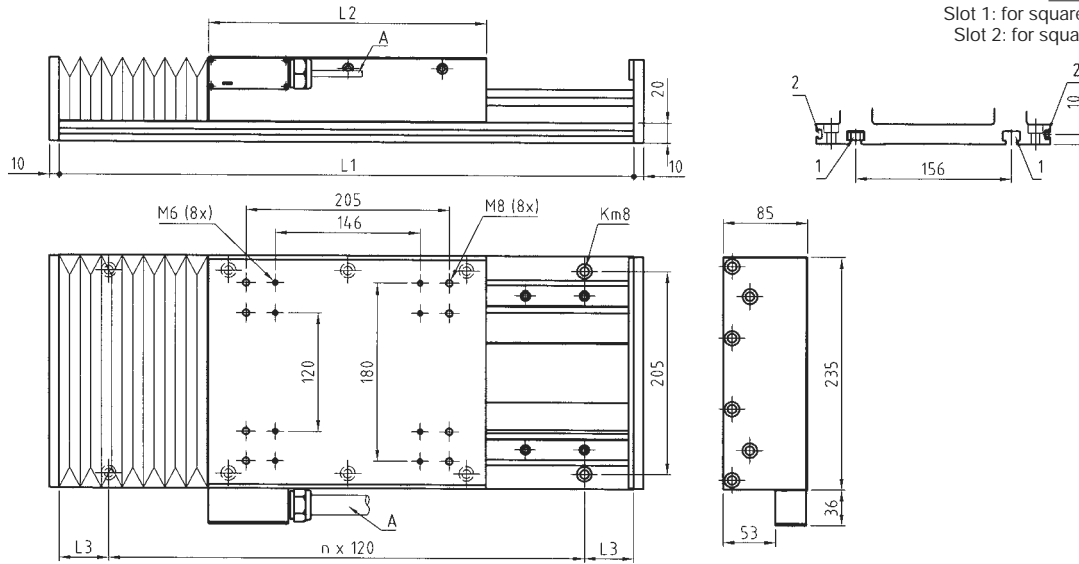
3) Maximum stroke between end stops

4) G<sub>A</sub> = Total weight of table  
G<sub>O</sub> = Weight of mobile mass of table top

# LTB 235.L1.A3xxxx-BL

# Rail guide tables with linear motor drive with or without bellows

T slots in bottom part:  
Slot 1: for square nut DIN 562 M10  
Slot 2: for square nut DIN 562 M5



A Cable output for motor and measuring system. Flat ribbon cable 20 x 6.3 mm

Direction of travel: - <---> +

| Lenght |    |    | A32008 |                   |     |                         |      | A33008            |     |                         |      | AC34008           |      |                         |    |                   |
|--------|----|----|--------|-------------------|-----|-------------------------|------|-------------------|-----|-------------------------|------|-------------------|------|-------------------------|----|-------------------|
| L1     | L3 | n  | 2) KN  | 4) G <sub>U</sub> | L2  | Stroke <sup>3)</sup> S1 | S2   | 5) G <sub>O</sub> | L2  | Stroke <sup>3)</sup> S1 | S2   | 5) G <sub>O</sub> | L2   | Stroke <sup>3)</sup> S1 | S2 | 5) G <sub>O</sub> |
| mm     |    | -  |        | kg                | mm  |                         |      | kg                | mm  |                         |      | kg                | mm   |                         |    | kg                |
| 340    | 50 | 2  |        | 8,8               | 235 | 85                      | 95   | 8,0               | 320 |                         |      | 10,6              | 410  |                         |    | 13,1              |
| 400    | 20 | 3  | x      | 10,2              |     | 135                     | 155  |                   |     | 65                      | 70   |                   |      |                         |    |                   |
| 460    | 50 | 3  | x      | 11,6              |     | 185                     | 215  |                   |     | 115                     | 130  |                   |      |                         |    |                   |
| 520    | 20 | 4  |        | 12,9              |     | 235                     | 275  |                   |     | 160                     | 190  |                   | 90   | 100                     |    |                   |
| 580    | 50 | 4  |        | 14,3              |     | 285                     | 335  |                   |     | 210                     | 250  |                   | 140  | 160                     |    |                   |
| 640    | 20 | 5  | x      | 15,7              |     | 340                     | 395  |                   |     | 260                     | 310  |                   | 185  | 220                     |    |                   |
| 700    | 50 | 5  | x      | 17,1              |     | 385                     | 455  |                   |     | 310                     | 370  |                   | 235  | 280                     |    |                   |
| 760    | 20 | 6  |        | 18,4              |     | 435                     | 515  |                   |     | 360                     | 430  |                   | 285  | 340                     |    |                   |
| 820    | 50 | 6  |        | 19,8              |     | 485                     | 575  |                   |     | 415                     | 490  |                   | 335  | 400                     |    |                   |
| 880    | 20 | 7  | x      | 21,2              |     | 535                     | 635  |                   |     | 465                     | 550  |                   | 390  | 460                     |    |                   |
| 940    | 50 | 7  | x      | 22,6              |     | 585                     | 695  |                   |     | 515                     | 610  |                   | 440  | 520                     |    |                   |
| 1000   | 20 | 8  |        | 23,9              |     | 635                     | 755  |                   |     | 565                     | 670  |                   | 490  | 580                     |    |                   |
| 1060   | 50 | 8  |        | 25,3              |     | 690                     | 815  |                   |     | 615                     | 730  |                   | 540  | 640                     |    |                   |
| 1120   | 20 | 9  | x      | 26,7              |     | 740                     | 875  |                   |     | 665                     | 790  |                   | 590  | 700                     |    |                   |
| 1180   | 50 | 9  | x      | 28,1              |     | 790                     | 935  |                   |     | 715                     | 850  |                   | 640  | 760                     |    |                   |
| 1240   | 20 | 10 |        | 29,4              |     | 840                     | 995  |                   |     | 765                     | 910  |                   | 685  | 820                     |    |                   |
| 1300   | 50 | 10 |        | 30,8              |     | 890                     | 1055 |                   |     | 815                     | 970  |                   | 740  | 880                     |    |                   |
| 1360   | 20 | 11 | x      | 32,2              |     | 935                     | 1115 |                   |     | 865                     | 1030 |                   | 790  | 940                     |    |                   |
| 1420   | 50 | 11 | x      | 33,6              |     | 990                     | 1175 |                   |     | 915                     | 1090 |                   | 840  | 1000                    |    |                   |
| 1480   | 20 | 12 |        | 34,9              |     | 1040                    | 1235 |                   |     | 965                     | 1150 |                   | 890  | 1060                    |    |                   |
| 1540   | 50 | 12 |        | 36,3              |     | 1090                    | 1295 |                   |     | 1015                    | 1210 |                   | 940  | 1120                    |    |                   |
| 1600   | 20 | 13 | x      | 37,7              |     | 1140                    | 1355 |                   |     | 1070                    | 1270 |                   | 990  | 1180                    |    |                   |
| 1660   | 50 | 13 | x      | 39,1              |     | 1190                    | 1415 |                   |     | 1120                    | 1330 |                   | 1045 | 1240                    |    |                   |
| 1720   | 20 | 14 |        | 40,4              |     | 1240                    | 1475 |                   |     | 1170                    | 1390 |                   | 1095 | 1300                    |    |                   |
| 1780   | 50 | 14 |        | 41,8              |     | 1290                    | 1535 |                   |     | 1220                    | 1450 |                   | 1145 | 1360                    |    |                   |
| 1840   | 20 | 15 | x      | 43,2              |     | 1345                    | 1595 |                   |     | 1265                    | 1510 |                   | 1195 | 1420                    |    |                   |
| 1900   | 50 | 15 | x      | 44,6              |     | 1395                    | 1655 |                   |     | 1315                    | 1570 |                   | 1245 | 1480                    |    |                   |
| 1960   | 20 | 16 |        | 45,9              |     | 1445                    | 1715 |                   |     | 1370                    | 1630 |                   | 1295 | 1540                    |    |                   |
| 2020   | 50 | 16 |        | 47,3              |     | 1490                    | 1775 |                   |     | 1420                    | 1690 |                   | 1345 | 1600                    |    |                   |

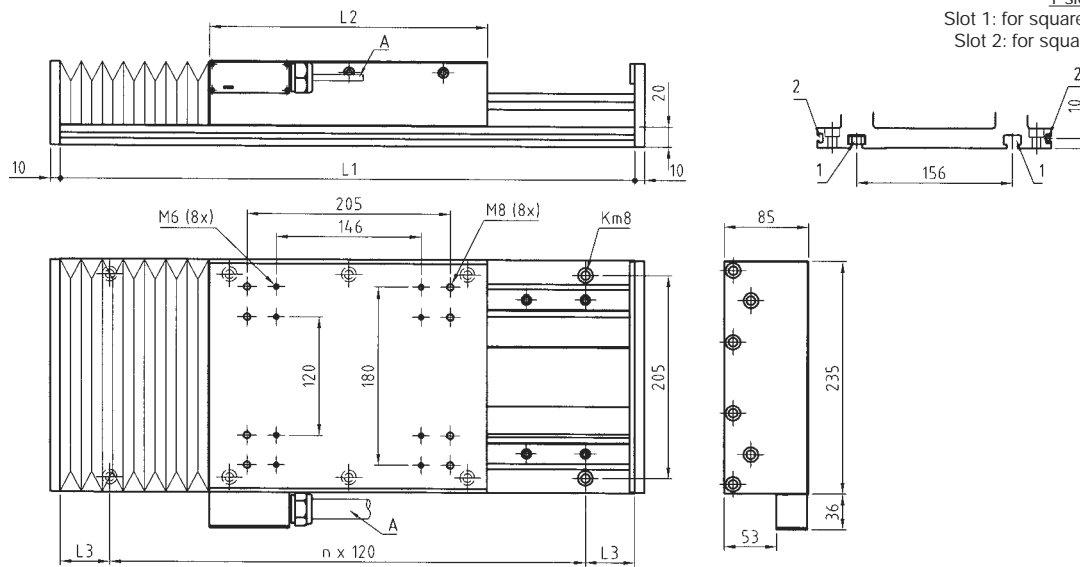
<sup>2)</sup> Suitable as top axis for central cross table mounting

<sup>3)</sup> Maximum stroke between end stops:  
S1 with bellows (standard version)  
S2 without bellows (special version)

<sup>4)</sup> G<sub>U</sub> = Stationary mass of bottom part  
<sup>5)</sup> G<sub>O</sub> = Mobile mass of table top

# LTB 235.L1.A3xxxx-BL

# Rail guide tables with linear motor drive with or without bellows



A Cable output for motor and measuring system. Flat ribbon cable 20 x 6.3 mm

Direction of travel: - <----> +

| Lenght |    | A32008 |       |                   |                         |      | A33008 |                   |     |      |      | AC34008           |     |      |      |                   |
|--------|----|--------|-------|-------------------|-------------------------|------|--------|-------------------|-----|------|------|-------------------|-----|------|------|-------------------|
| L1     | L3 | 2) n   | 4) KN | 4) G <sub>U</sub> | Stroke <sup>3)</sup> L2 | S1   | S2     | 5) G <sub>O</sub> | L2  | S1   | S2   | 5) G <sub>O</sub> | L2  | S1   | S2   | 5) G <sub>O</sub> |
| mm     | -  | -      | -     | kg                | mm                      | -    | -      | kg                | mm  | -    | -    | kg                | mm  | -    | -    | kg                |
| 2080   | 20 | 17     | x     | 48,7              | 235                     | 1540 | 1835   | 8,0               | 320 | 1470 | 1750 | 10,6              | 410 | 1400 | 1660 | 13,1              |
| 2140   | 50 | 17     | x     | 50,1              |                         | 1590 | 1895   |                   |     | 1520 | 1810 |                   |     | 1450 | 1720 |                   |
| 2200   | 20 | 18     |       | 51,4              |                         | 1645 | 1955   |                   |     | 1570 | 1870 |                   |     | 1495 | 1780 |                   |
| 2260   | 50 | 18     |       | 52,8              |                         | 1695 | 2015   |                   |     | 1620 | 1930 |                   |     | 1545 | 1840 |                   |
| 2320   | 20 | 19     | x     | 54,2              |                         | 1745 | 2075   |                   |     | 1670 | 1990 |                   |     | 1595 | 1900 |                   |
| 2380   | 50 | 19     | x     | 55,6              |                         | 1795 | 2135   |                   |     | 1725 | 2050 |                   |     | 1645 | 1960 |                   |
| 2440   | 20 | 20     |       | 56,9              |                         | 1845 | 2195   |                   |     | 1775 | 2110 |                   |     | 1700 | 2020 |                   |
| 2500   | 50 | 20     |       | 58,3              |                         | 1895 | 2255   |                   |     | 1825 | 2170 |                   |     | 1750 | 2080 |                   |
| 2560   | 20 | 21     | x     | 59,7              |                         | 1945 | 2315   |                   |     | 1875 | 2230 |                   |     | 1800 | 2140 |                   |
| 2620   | 50 | 21     | x     | 61,1              |                         | 2000 | 2375   |                   |     | 1925 | 2290 |                   |     | 1850 | 2200 |                   |
| 2680   | 20 | 22     |       | 62,4              |                         | 2045 | 2435   |                   |     | 1975 | 2350 |                   |     | 1900 | 2260 |                   |
| 2740   | 50 | 22     |       | 63,8              |                         | 1095 | 2495   |                   |     | 2025 | 2410 |                   |     | 1950 | 2320 |                   |
| 2800   | 20 | 23     | x     | 65,2              |                         | 2145 | 2555   |                   |     | 2075 | 2470 |                   |     | 1995 | 2380 |                   |
| 2860   | 50 | 23     | x     | 66,6              |                         | 2195 | 2615   |                   |     | 2125 | 2530 |                   |     | 2050 | 2440 |                   |

<sup>2)</sup> Suitable as top axis for central cross table mounting

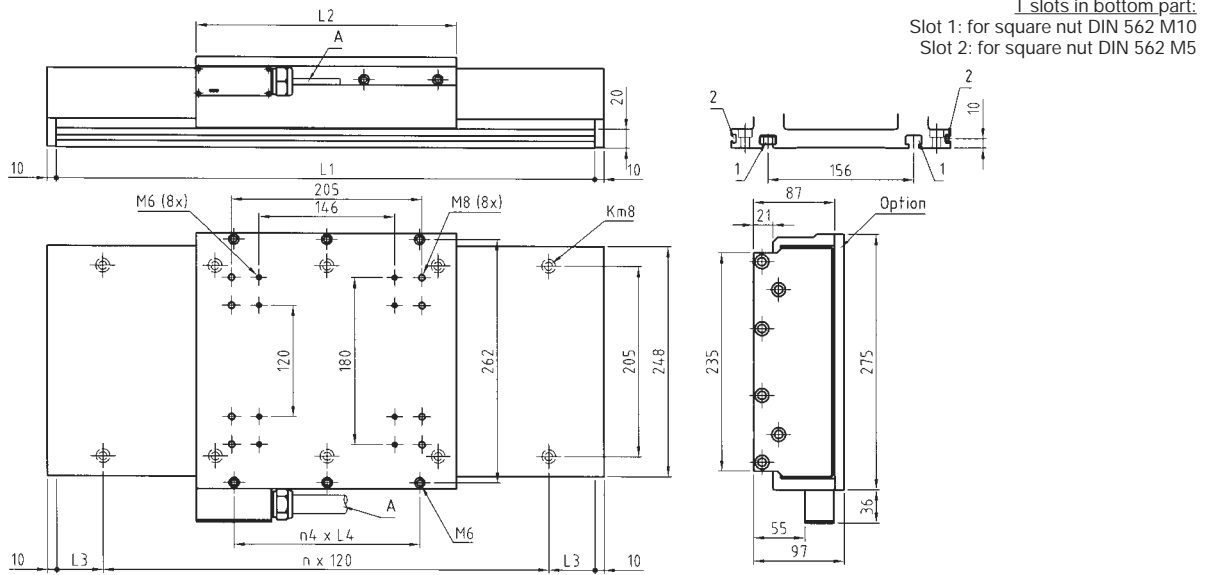
<sup>3)</sup> Maximum stroke between end stops: S1 with bellows (standard version) S2 without bellows (special version)

<sup>4)</sup> G<sub>U</sub> = Stationary mass of bottom part  
<sup>5)</sup> G<sub>O</sub> = Mobile mass of table top



# LTB 235.L1.A3xxxx-SC

# Rail guide tables with linear motor drive with steel cover



A Cable output for motor and measuring system. Flat ribbon cable 20 x 6.3 mm

Direction of travel: - <---> +

| Lenght |    |    | A32008 |                   |     |                        | A33008            |                   |     |                        | A34008            |                   |     |                        |                   |                   |
|--------|----|----|--------|-------------------|-----|------------------------|-------------------|-------------------|-----|------------------------|-------------------|-------------------|-----|------------------------|-------------------|-------------------|
| L1     | L3 | n  | 2) KN  | 4) G <sub>U</sub> | L2  | Stroke <sup>3)</sup> S | n <sub>4xL4</sub> | 5) G <sub>O</sub> | L2  | Stroke <sup>3)</sup> S | n <sub>4xL4</sub> | 5) G <sub>O</sub> | L2  | Stroke <sup>3)</sup> S | n <sub>4xL4</sub> | 5) G <sub>O</sub> |
| mm     | -  | -  |        | kg                | mm  | mm                     |                   | kg                | mm  | mm                     |                   | kg                | mm  | mm                     |                   | kg                |
| 340    | 50 | 2  |        | 9,9               | 235 | 95                     | 2x98              | 10,5              | 320 |                        | 3x78              | 14,1              | 410 |                        | 4x81,5            | 17,6              |
| 400    | 20 | 3  | x      | 11,5              |     | 155                    |                   |                   |     | 70                     |                   |                   |     |                        |                   |                   |
| 460    | 50 | 3  | x      | 13,0              |     | 215                    |                   |                   |     | 130                    |                   |                   |     |                        |                   |                   |
| 520    | 20 | 4  |        | 14,5              |     | 275                    |                   |                   |     | 190                    |                   |                   |     | 100                    |                   |                   |
| 580    | 50 | 4  |        | 16,1              |     | 335                    |                   |                   |     | 250                    |                   |                   |     | 160                    |                   |                   |
| 640    | 20 | 5  | x      | 17,6              |     | 395                    |                   |                   |     | 310                    |                   |                   |     | 220                    |                   |                   |
| 700    | 50 | 5  | x      | 19,2              |     | 455                    |                   |                   |     | 370                    |                   |                   |     | 280                    |                   |                   |
| 760    | 20 | 6  |        | 20,7              |     | 515                    |                   |                   |     | 430                    |                   |                   |     | 340                    |                   |                   |
| 820    | 50 | 6  |        | 22,2              |     | 575                    |                   |                   |     | 490                    |                   |                   |     | 400                    |                   |                   |
| 880    | 20 | 7  | x      | 23,8              |     | 635                    |                   |                   |     | 550                    |                   |                   |     | 460                    |                   |                   |
| 940    | 50 | 7  | x      | 25,3              |     | 695                    |                   |                   |     | 610                    |                   |                   |     | 520                    |                   |                   |
| 1000   | 20 | 8  |        | 26,9              |     | 755                    |                   |                   |     | 670                    |                   |                   |     | 580                    |                   |                   |
| 1060   | 50 | 8  |        | 28,4              |     | 815                    |                   |                   |     | 730                    |                   |                   |     | 640                    |                   |                   |
| 1120   | 20 | 9  | x      | 29,9              |     | 875                    |                   |                   |     | 790                    |                   |                   |     | 700                    |                   |                   |
| 1180   | 50 | 9  | x      | 31,5              |     | 935                    |                   |                   |     | 850                    |                   |                   |     | 760                    |                   |                   |
| 1240   | 20 | 10 |        | 33,0              |     | 995                    |                   |                   |     | 910                    |                   |                   |     | 820                    |                   |                   |
| 1300   | 50 | 10 |        | 34,6              |     | 1055                   |                   |                   |     | 970                    |                   |                   |     | 880                    |                   |                   |
| 1360   | 20 | 11 | x      | 36,1              |     | 1115                   |                   |                   |     | 1030                   |                   |                   |     | 940                    |                   |                   |
| 1420   | 50 | 11 | x      | 37,6              |     | 1175                   |                   |                   |     | 1090                   |                   |                   |     | 1000                   |                   |                   |
| 1480   | 20 | 12 |        | 39,2              |     | 1235                   |                   |                   |     | 1150                   |                   |                   |     | 1060                   |                   |                   |
| 1540   | 50 | 12 |        | 40,7              |     | 1295                   |                   |                   |     | 1210                   |                   |                   |     | 1120                   |                   |                   |
| 1600   | 20 | 13 | x      | 42,3              |     | 1355                   |                   |                   |     | 1270                   |                   |                   |     | 1180                   |                   |                   |
| 1660   | 50 | 13 | x      | 43,8              |     | 1415                   |                   |                   |     | 1330                   |                   |                   |     | 1240                   |                   |                   |
| 1720   | 20 | 14 |        | 45,3              |     | 1475                   |                   |                   |     | 1390                   |                   |                   |     | 1300                   |                   |                   |
| 1780   | 50 | 14 |        | 46,9              |     | 1535                   |                   |                   |     | 1450                   |                   |                   |     | 1360                   |                   |                   |
| 1840   | 20 | 15 | x      | 48,4              |     | 1595                   |                   |                   |     | 1510                   |                   |                   |     | 1420                   |                   |                   |
| 1900   | 50 | 15 | x      | 50,0              |     | 1655                   |                   |                   |     | 1570                   |                   |                   |     | 1480                   |                   |                   |
| 1960   | 20 | 16 |        | 51,5              |     | 1715                   |                   |                   |     | 1630                   |                   |                   |     | 1540                   |                   |                   |
| 2020   | 50 | 16 |        | 53,0              |     | 1775                   |                   |                   |     | 1690                   |                   |                   |     | 1600                   |                   |                   |

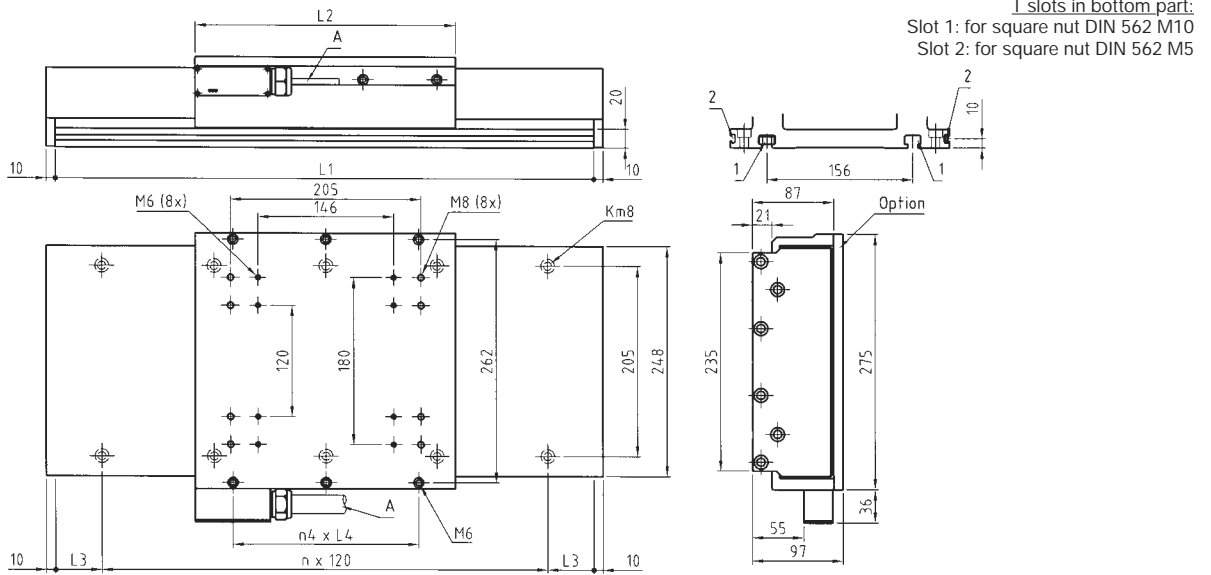
2) Suitable as top axis for central cross table mounting

3) Maximum stroke between end stops

4) G<sub>U</sub> = Stationary mass of bottom part  
5) G<sub>O</sub> = Mobile mass of table top

# LTB 235.L1.A3xxxx-SC

# Rail guide tables with linear motor drive with steel cover



A Cable output for motor and measuring system. Flat ribbon cable 20 x 6.3 mm

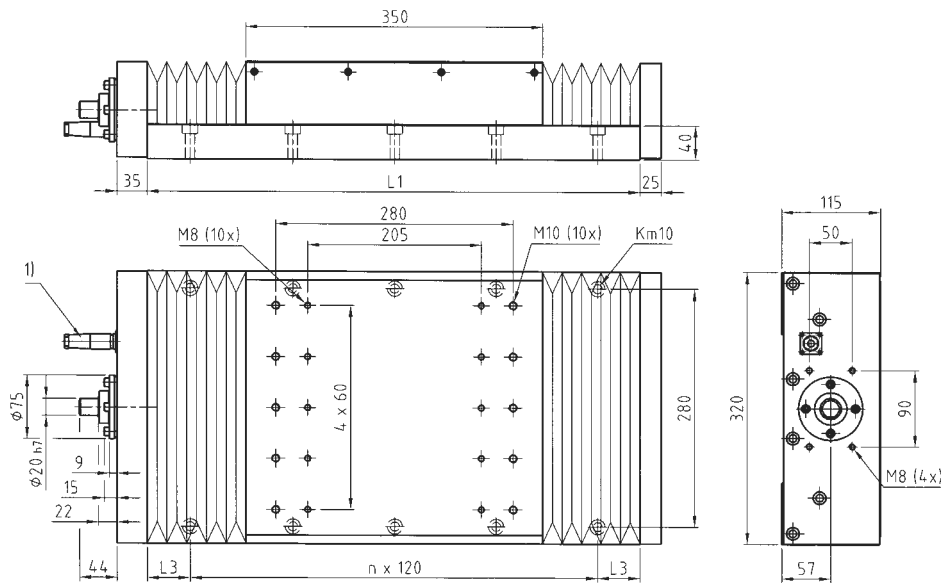
Direction of travel: - <----> +

| Lenght |    |    | A32008 |                   |     |                        | A33008            |                   |     |                        | A34008            |                   |     |                        |                   |                   |
|--------|----|----|--------|-------------------|-----|------------------------|-------------------|-------------------|-----|------------------------|-------------------|-------------------|-----|------------------------|-------------------|-------------------|
| L1     | L3 | n  | 2) KN  | 4) G <sub>U</sub> | L2  | Stroke <sup>3)</sup> S | n <sub>4xL4</sub> | 5) G <sub>O</sub> | L2  | Stroke <sup>3)</sup> S | n <sub>4xL4</sub> | 5) G <sub>O</sub> | L2  | Stroke <sup>3)</sup> S | n <sub>4xL4</sub> | 5) G <sub>O</sub> |
| mm     | -  | -  |        | kg                | mm  |                        |                   | kg                | mm  |                        |                   | kg                | mm  |                        |                   | kg                |
| 2080   | 20 | 17 | x      | 54,6              | 235 | 1835                   | 2x98              | 10,5              | 320 | 1750                   | 3x78              | 14,1              | 410 | 1660                   | 4x81,5            | 17,6              |
| 2140   | 50 | 17 | x      | 56,1              |     | 1895                   |                   |                   |     | 1810                   |                   |                   |     | 1720                   |                   |                   |
| 2200   | 20 | 18 |        | 57,7              |     | 1955                   |                   |                   |     | 1870                   |                   |                   |     | 1780                   |                   |                   |
| 2260   | 50 | 18 |        | 59,2              |     | 2015                   |                   |                   |     | 1930                   |                   |                   |     | 1840                   |                   |                   |
| 2320   | 20 | 19 | x      | 60,7              |     | 2075                   |                   |                   |     | 1990                   |                   |                   |     | 1900                   |                   |                   |
| 2380   | 50 | 19 | x      | 62,3              |     | 2135                   |                   |                   |     | 2050                   |                   |                   |     | 1960                   |                   |                   |
| 2440   | 20 | 20 |        | 63,8              |     | 2195                   |                   |                   |     | 2110                   |                   |                   |     | 2020                   |                   |                   |
| 2500   | 50 | 20 |        | 65,4              |     | 2255                   |                   |                   |     | 2170                   |                   |                   |     | 2080                   |                   |                   |
| 2560   | 20 | 21 | x      | 66,9              |     | 2315                   |                   |                   |     | 2230                   |                   |                   |     | 2140                   |                   |                   |
| 2620   | 50 | 21 | x      | 68,4              |     | 2375                   |                   |                   |     | 2290                   |                   |                   |     | 2200                   |                   |                   |
| 2680   | 20 | 22 |        | 70,0              |     | 2435                   |                   |                   |     | 2350                   |                   |                   |     | 2260                   |                   |                   |
| 2740   | 50 | 22 |        | 71,5              |     | 2495                   |                   |                   |     | 2410                   |                   |                   |     | 2320                   |                   |                   |
| 2800   | 20 | 23 | x      | 73,1              |     | 2555                   |                   |                   |     | 2470                   |                   |                   |     | 2380                   |                   |                   |
| 2860   | 50 | 23 | x      | 74,6              |     | 2615                   |                   |                   |     | 2530                   |                   |                   |     | 2440                   |                   |                   |

<sup>2)</sup> Suitable as top axis for central cross table mounting

<sup>3)</sup> Maximum stroke between end stops

<sup>4)</sup> G<sub>U</sub> = Stationary mass of bottom part  
<sup>5)</sup> G<sub>O</sub> = Mobile mass of table top



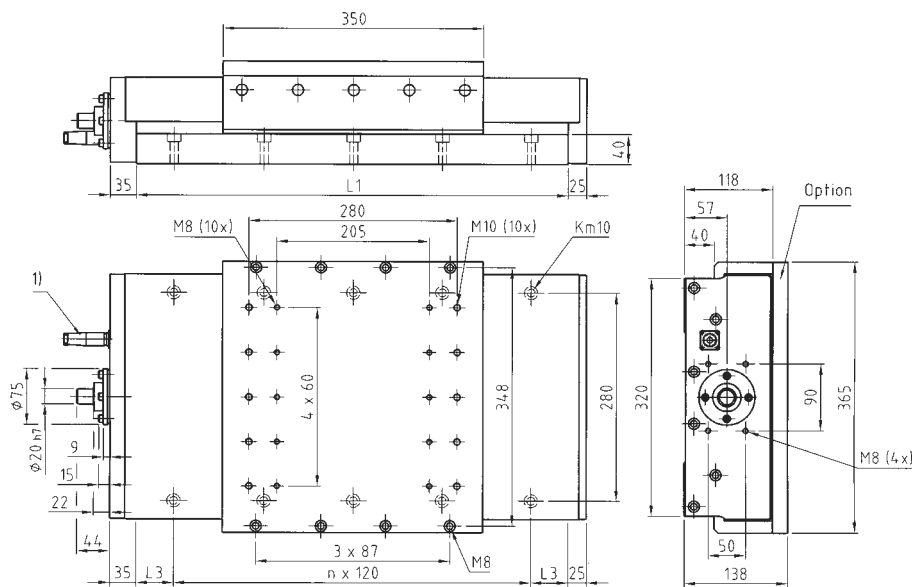
1) Plug connection for limit and reference switches (optional)

Direction of travel: - <---> +

| Lenght |    |    | Screw data |           |                            |                            |                            |                            |                                      | Weight <sup>3)</sup> |                |
|--------|----|----|------------|-----------|----------------------------|----------------------------|----------------------------|----------------------------|--------------------------------------|----------------------|----------------|
| L1     | L3 | n  | Stroke S1  | Stroke S2 | SX3205<br>n <sub>max</sub> | TN3205<br>n <sub>max</sub> | SX3210<br>n <sub>max</sub> | TN3210<br>n <sub>max</sub> | TN3220+3232+3240<br>n <sub>max</sub> | G <sub>A</sub>       | G <sub>O</sub> |
| mm     |    | -  | mm         |           | 1/min                      |                            |                            |                            |                                      | kg                   |                |
| 580    | 50 | 4  | 195        | 220       | 1560                       | 2810                       | 1560                       | 2810                       | 2810                                 | 43,5                 | 13,3           |
| 700    | 50 | 5  | 300        | 340       | 1560                       | 2810                       | 1560                       | 2810                       | 2810                                 | 48,5                 |                |
| 820    | 50 | 6  | 405        | 460       | 1560                       | 2810                       | 1560                       | 2810                       | 2810                                 | 53,4                 |                |
| 940    | 50 | 7  | 510        | 580       | 1560                       | 2810                       | 1560                       | 2810                       | 2810                                 | 58,4                 |                |
| 1060   | 50 | 8  | 610        | 700       | 1560                       | 2810                       | 1560                       | 2810                       | 2810                                 | 63,3                 |                |
| 1180   | 50 | 9  | 720        | 820       | 1560                       | 2810                       | 1560                       | 2810                       | 2810                                 | 68,2                 |                |
| 1300   | 50 | 10 | 820        | 940       | 1560                       | 2810                       | 1560                       | 2810                       | 2810                                 | 73,2                 |                |
| 1420   | 50 | 11 | 930        | 1060      | 1560                       | 2810                       | 1560                       | 2810                       | 2810                                 | 78,1                 |                |
| 1540   | 50 | 12 | 1030       | 1180      | 1560                       | 2610                       | 1560                       | 2520                       | 2520                                 | 83,1                 |                |
| 1660   | 50 | 13 | 1135       | 1300      | 1560                       | 2180                       | 1560                       | 2100                       | 2100                                 | 88,0                 |                |
| 1780   | 50 | 14 | 1235       | 1420      | 1560                       | 1850                       | 1560                       | 1780                       | 1780                                 | 92,9                 |                |
| 1900   | 50 | 15 | 1345       | 1540      | 1560                       | 1590                       | 1440                       | 1530                       | 1530                                 | 97,9                 |                |
| 2020   | 50 | 16 | 1445       | 1660      | 1380                       | 1380                       | 1250                       | 1330                       | 1330                                 | 102,8                |                |
| 2140   | 50 | 17 | 1555       | 1780      | 1210                       | 1200                       | 1090                       | 1160                       | 1160                                 | 107,8                |                |
| 2260   | 50 | 18 | 1655       | 1900      | 1070                       | 1060                       | 970                        | 1030                       | 1030                                 | 112,7                |                |
| 2380   | 50 | 19 | 1760       | 2020      | 950                        | 950                        | 860                        | 910                        | 910                                  | 117,7                |                |
| 2500   | 50 | 20 | 1860       | 2140      | 850                        | 850                        | 770                        | 820                        | 820                                  | 122,6                |                |
| 2620   | 50 | 21 | 1970       | 2260      | 760                        | 760                        | 690                        | 740                        | 740                                  | 127,5                |                |
| 2740   | 50 | 22 | 2070       | 2380      | 690                        | 690                        | 630                        | 670                        | 670                                  | 132,5                |                |
| 2860   | 50 | 23 | 2180       | 2500      | 630                        | 630                        | 570                        | 600                        | 600                                  | 137,4                |                |

<sup>2)</sup> Maximum stroke between end stops:  
S1 with bellows (standard version)  
S2 without bellows (special version)

<sup>3)</sup> G<sub>A</sub> = Total weight of table  
G<sub>O</sub> = Weight of mobile mass of table top



1) Plug connection for limit and reference switches (optional)

Direction of travel: - <----> +

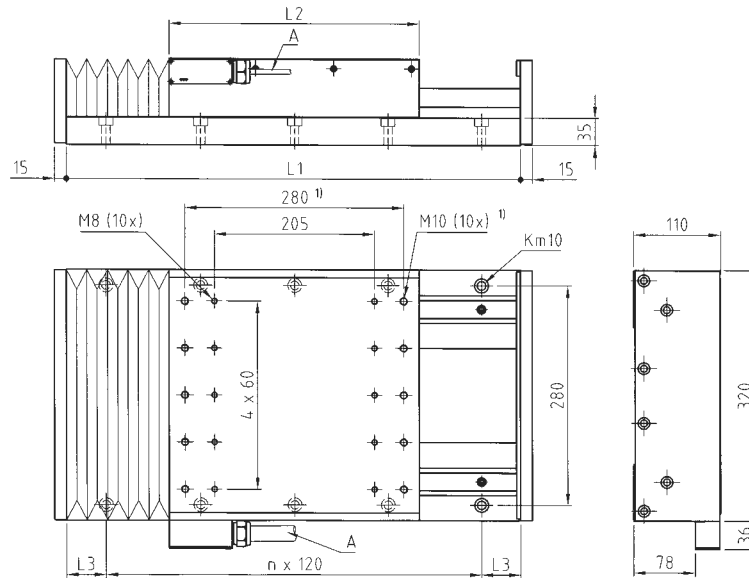
| Lenght |    |    | Screw data           |                  |                  |                  |                  |                  | Weight <sup>4)</sup> |                |
|--------|----|----|----------------------|------------------|------------------|------------------|------------------|------------------|----------------------|----------------|
| L1     | L3 | n  | Stroke <sup>2)</sup> | SX3205           | TN3205           | SX3210           | TN3210           | TN3220+3232+3240 | G <sub>A</sub>       | G <sub>O</sub> |
| mm     |    | -  | mm                   | n <sub>max</sub> | n <sub>max</sub> | n <sub>max</sub> | n <sub>max</sub> | n <sub>max</sub> | kg                   |                |
| 580    | 50 | 4  | 220                  | 1560             | 2810             | 1560             | 2810             | 2810             | 62,9                 | 30,4           |
| 700    | 50 | 5  | 340                  | 1560             | 2810             | 1560             | 2810             | 2810             | 68,3                 |                |
| 820    | 50 | 6  | 460                  | 1560             | 2810             | 1560             | 2810             | 2810             | 73,8                 |                |
| 940    | 50 | 7  | 580                  | 1560             | 2810             | 1560             | 2810             | 2810             | 79,2                 |                |
| 1060   | 50 | 8  | 700                  | 1560             | 2810             | 1560             | 2810             | 2810             | 84,6                 |                |
| 1180   | 50 | 9  | 820                  | 1560             | 2810             | 1560             | 2810             | 2810             | 90,0                 |                |
| 1300   | 50 | 10 | 940                  | 1560             | 2810             | 1560             | 2810             | 2810             | 95,5                 |                |
| 1420   | 50 | 11 | 1060                 | 1560             | 2810             | 1560             | 2810             | 2810             | 100,9                |                |
| 1540   | 50 | 12 | 1180                 | 1560             | 2610             | 1560             | 2520             | 2520             | 106,3                |                |
| 1660   | 50 | 13 | 1300                 | 1560             | 2180             | 1560             | 2100             | 2100             | 111,7                |                |
| 1780   | 50 | 14 | 1420                 | 1560             | 1850             | 1560             | 1780             | 1780             | 117,2                |                |
| 1900   | 50 | 15 | 1540                 | 1560             | 1590             | 1440             | 1530             | 1530             | 122,6                |                |
| 2020   | 50 | 16 | 1660                 | 1380             | 1380             | 1250             | 1330             | 1330             | 128,0                |                |
| 2140   | 50 | 17 | 1780                 | 1210             | 1200             | 1090             | 1160             | 1160             | 133,5                |                |
| 2260   | 50 | 18 | 1900                 | 1070             | 1060             | 970              | 1030             | 1030             | 138,9                |                |
| 2380   | 50 | 19 | 2020                 | 950              | 950              | 860              | 910              | 910              | 144,3                |                |
| 2500   | 50 | 20 | 2140                 | 850              | 850              | 770              | 820              | 820              | 149,7                |                |
| 2620   | 50 | 21 | 2260                 | 760              | 760              | 690              | 740              | 740              | 155,2                |                |
| 2740   | 50 | 22 | 2380                 | 690              | 690              | 630              | 670              | 670              | 160,6                |                |
| 2860   | 50 | 23 | 2500                 | 630              | 630              | 570              | 600              | 600              | 166,0                |                |

<sup>2)</sup> Maximum stroke between end stops

<sup>3)</sup> G<sub>A</sub> = Total weight of table  
G<sub>O</sub> = Weight of mobile mass of table top

# LTB 320.L1.A3xxxx-BL

# Rail guide tables with linear motor drive with or without bellows



<sup>1)</sup> only at size A33014 + A34014

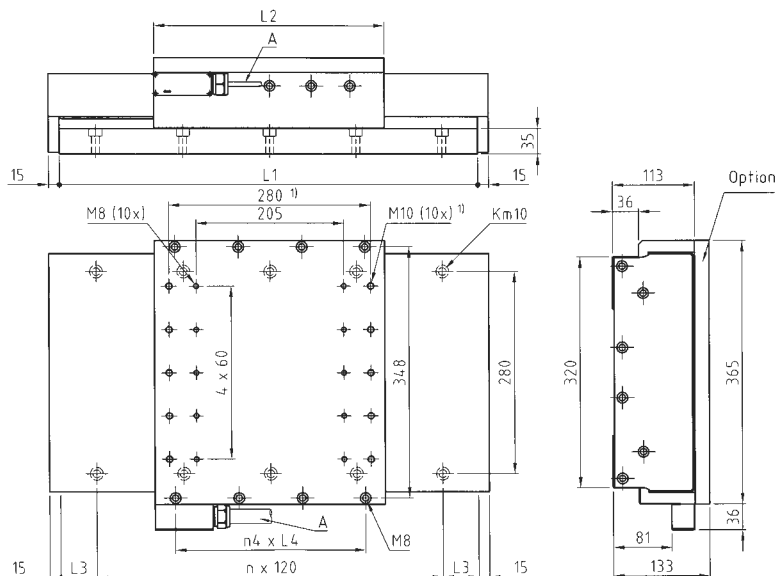
A Cable output for motor and measuring system. Flat ribbon cable 20 x 6.3 mm

Direction of travel: - <---> +

| Lenght |    |    |                              | A32014 |                      |      |                              | A33014 |                      |      |                              | A34014 |                      |      |                              |
|--------|----|----|------------------------------|--------|----------------------|------|------------------------------|--------|----------------------|------|------------------------------|--------|----------------------|------|------------------------------|
| L1     | L3 | n  | <sup>3)</sup> G <sub>U</sub> | L2     | Stroke <sup>2)</sup> |      | <sup>4)</sup> G <sub>O</sub> | L2     | Stroke <sup>2)</sup> |      | <sup>4)</sup> G <sub>O</sub> | L2     | Stroke <sup>2)</sup> |      | <sup>4)</sup> G <sub>O</sub> |
| mm     | mm | -  | kg                           | mm     | S1                   | S2   | kg                           | mm     | S1                   | S2   | kg                           | mm     | S1                   | S2   | kg                           |
| 580    | 50 | 4  | 30,4                         | 280    | 260                  | 290  | 15,3                         | 320    | 225                  | 250  | 18,7                         | 410    | 140                  | 160  | 23,8                         |
| 700    | 50 | 5  | 36,1                         |        | 360                  | 410  |                              |        | 325                  | 370  |                              |        | 250                  | 280  |                              |
| 820    | 50 | 6  | 41,9                         |        | 465                  | 530  |                              |        | 435                  | 490  |                              |        | 350                  | 400  |                              |
| 940    | 50 | 7  | 47,6                         |        | 570                  | 650  |                              |        | 535                  | 610  |                              |        | 455                  | 520  |                              |
| 1060   | 50 | 8  | 53,3                         |        | 675                  | 770  |                              |        | 640                  | 730  |                              |        | 560                  | 640  |                              |
| 1180   | 50 | 9  | 59,1                         |        | 775                  | 890  |                              |        | 740                  | 850  |                              |        | 665                  | 760  |                              |
| 1300   | 50 | 10 | 64,8                         |        | 885                  | 1010 |                              |        | 850                  | 970  |                              |        | 765                  | 880  |                              |
| 1420   | 50 | 11 | 70,5                         |        | 985                  | 1130 |                              |        | 950                  | 1090 |                              |        | 875                  | 1000 |                              |
| 1540   | 50 | 12 | 76,3                         |        | 1090                 | 1250 |                              |        | 1060                 | 1210 |                              |        | 975                  | 1120 |                              |
| 1660   | 50 | 13 | 82,0                         |        | 1195                 | 1370 |                              |        | 1160                 | 1330 |                              |        | 1080                 | 1240 |                              |
| 1780   | 50 | 14 | 87,7                         |        | 1300                 | 1490 |                              |        | 1265                 | 1450 |                              |        | 1185                 | 1360 |                              |
| 1900   | 50 | 15 | 93,5                         |        | 1400                 | 1610 |                              |        | 1370                 | 1570 |                              |        | 1290                 | 1480 |                              |
| 2020   | 50 | 16 | 99,2                         |        | 1510                 | 1730 |                              |        | 1475                 | 1690 |                              |        | 1390                 | 1600 |                              |
| 2140   | 50 | 17 | 104,9                        |        | 1610                 | 1850 |                              |        | 1575                 | 1810 |                              |        | 1500                 | 1720 |                              |
| 2260   | 50 | 18 | 110,7                        |        | 1720                 | 1970 |                              |        | 1685                 | 1930 |                              |        | 1600                 | 1840 |                              |
| 2380   | 50 | 19 | 116,4                        |        | 1820                 | 2090 |                              |        | 1785                 | 2050 |                              |        | 1710                 | 1960 |                              |
| 2500   | 50 | 20 | 122,1                        |        | 1925                 | 2210 |                              |        | 1890                 | 2170 |                              |        | 1810                 | 2080 |                              |
| 2620   | 50 | 21 | 127,9                        |        | 2025                 | 2330 |                              |        | 1995                 | 2290 |                              |        | 1915                 | 2200 |                              |
| 2740   | 50 | 22 | 133,6                        |        | 2135                 | 2450 |                              |        | 2100                 | 2410 |                              |        | 2015                 | 2320 |                              |
| 2860   | 50 | 23 | 139,3                        |        | 2235                 | 2570 |                              |        | 2200                 | 2530 |                              |        | 2125                 | 2440 |                              |

<sup>2)</sup> Maximum stroke between end stops:  
S1 with bellows (standard version)  
S2 without bellows (special version)

<sup>3)</sup> G<sub>U</sub> = Stationary mass of bottom part  
<sup>4)</sup> G<sub>O</sub> = Mobile mass of table top



<sup>1)</sup> only at size A33014 + A34014

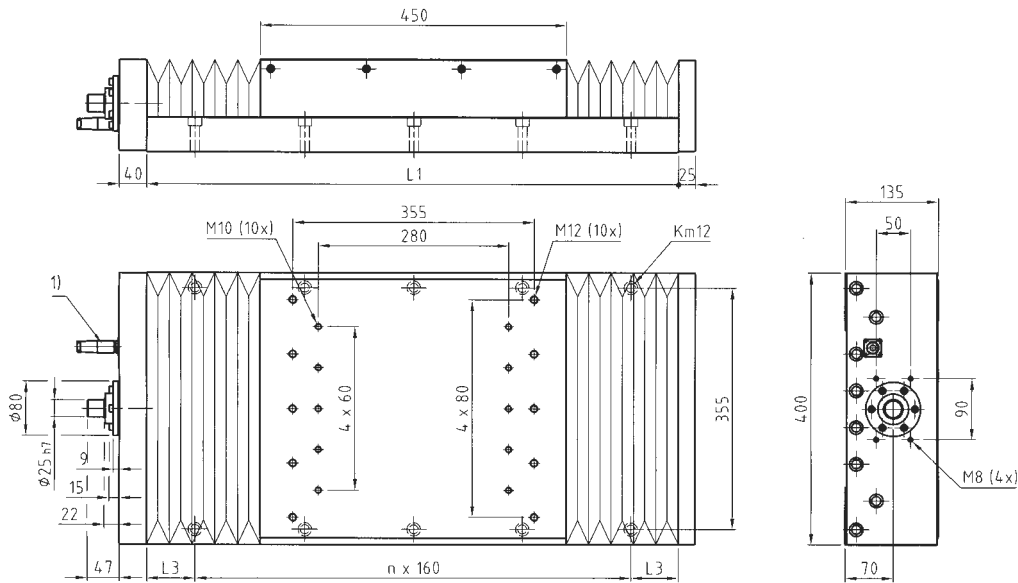
A Cable output for motor and measuring system. Flat ribbon cable 20 x 6.3 mm

Direction of travel: - <----> +

| Lenght |    |    |                              | A32014 |                        |                   |                              | A33014 |                        |                   |                              | A34014 |                        |                   |                              |
|--------|----|----|------------------------------|--------|------------------------|-------------------|------------------------------|--------|------------------------|-------------------|------------------------------|--------|------------------------|-------------------|------------------------------|
| L1     | L3 | n  | <sup>3)</sup> G <sub>U</sub> | L2     | Stroke <sup>2)</sup> S | n <sub>4xL4</sub> | <sup>4)</sup> G <sub>O</sub> | L2     | Stroke <sup>2)</sup> S | n <sub>4xL4</sub> | <sup>4)</sup> G <sub>O</sub> | L2     | Stroke <sup>2)</sup> S | n <sub>4xL4</sub> | <sup>4)</sup> G <sub>O</sub> |
| mm     | -  | -  | kg                           | mm     |                        |                   | kg                           | mm     |                        |                   | kg                           | mm     |                        |                   | kg                           |
| 580    | 50 | 4  | 32,6                         | 280    | 290                    | 3x75              | 22,3                         | 320    | 250                    | 3x87              | 26,8                         | 410    | 160                    | 4x88              | 34,1                         |
| 700    | 50 | 5  | 38,7                         |        | 410                    |                   |                              |        | 370                    |                   |                              |        | 280                    |                   |                              |
| 820    | 50 | 6  | 44,9                         |        | 530                    |                   |                              |        | 490                    |                   |                              |        | 400                    |                   |                              |
| 940    | 50 | 7  | 51,0                         |        | 650                    |                   |                              |        | 610                    |                   |                              |        | 520                    |                   |                              |
| 1060   | 50 | 8  | 57,2                         |        | 770                    |                   |                              |        | 730                    |                   |                              |        | 640                    |                   |                              |
| 1180   | 50 | 9  | 63,3                         |        | 890                    |                   |                              |        | 850                    |                   |                              |        | 760                    |                   |                              |
| 1300   | 50 | 10 | 69,5                         |        | 1010                   |                   |                              |        | 970                    |                   |                              |        | 880                    |                   |                              |
| 1420   | 50 | 11 | 75,6                         |        | 1130                   |                   |                              |        | 1090                   |                   |                              |        | 1000                   |                   |                              |
| 1540   | 50 | 12 | 81,8                         |        | 1250                   |                   |                              |        | 1210                   |                   |                              |        | 1120                   |                   |                              |
| 1660   | 50 | 13 | 87,9                         |        | 1370                   |                   |                              |        | 1330                   |                   |                              |        | 1240                   |                   |                              |
| 1780   | 50 | 14 | 94,1                         |        | 1490                   |                   |                              |        | 1450                   |                   |                              |        | 1360                   |                   |                              |
| 1900   | 50 | 15 | 100,2                        |        | 1610                   |                   |                              |        | 1570                   |                   |                              |        | 1480                   |                   |                              |
| 2020   | 50 | 16 | 106,4                        |        | 1730                   |                   |                              |        | 1690                   |                   |                              |        | 1600                   |                   |                              |
| 2140   | 50 | 17 | 112,5                        |        | 1850                   |                   |                              |        | 1810                   |                   |                              |        | 1720                   |                   |                              |
| 2260   | 50 | 18 | 118,7                        |        | 1970                   |                   |                              |        | 1930                   |                   |                              |        | 1840                   |                   |                              |
| 2380   | 50 | 19 | 124,8                        |        | 2090                   |                   |                              |        | 2050                   |                   |                              |        | 1960                   |                   |                              |
| 2500   | 50 | 20 | 130,9                        |        | 2210                   |                   |                              |        | 2170                   |                   |                              |        | 2080                   |                   |                              |
| 2620   | 50 | 21 | 137,1                        |        | 2330                   |                   |                              |        | 2290                   |                   |                              |        | 2200                   |                   |                              |
| 2740   | 50 | 22 | 143,2                        |        | 2450                   |                   |                              |        | 2410                   |                   |                              |        | 2320                   |                   |                              |
| 2860   | 50 | 23 | 149,4                        |        | 2570                   |                   |                              |        | 2530                   |                   |                              |        | 2440                   |                   |                              |

<sup>2)</sup> Maximum stroke between end stops

<sup>4)</sup> G<sub>U</sub> = Stationary mass of bottom part  
<sup>5)</sup> G<sub>O</sub> = Mobile mass of table top



1) Plug connection for limit and reference switches (optional)

Direction of travel: - <---> +

| Lenght |    |    | Screw dat |           |                         |                         |                         |                         |                              |                | Weight <sup>3)</sup> |  |
|--------|----|----|-----------|-----------|-------------------------|-------------------------|-------------------------|-------------------------|------------------------------|----------------|----------------------|--|
| L1     | L3 | n  | Stroke S1 | Stroke S2 | SX4005 n <sub>max</sub> | TN4005 n <sub>max</sub> | SX4010 n <sub>max</sub> | TN4010 n <sub>max</sub> | TN4020+4040 n <sub>max</sub> | G <sub>A</sub> | G <sub>O</sub>       |  |
| mm     | mm | -  | mm        | mm        | 1/min                   | 1/min                   | 1/min                   | 1/min                   | 1/min                        | kg             |                      |  |
| 620    | 70 | 3  | 145       | 160       | 1250                    | 2250                    | 1250                    | 2250                    | 2250                         | 77,0           | 25,2                 |  |
| 780    | 70 | 4  | 290       | 320       | 1250                    | 2250                    | 1250                    | 2250                    | 2250                         | 87,7           |                      |  |
| 940    | 70 | 5  | 430       | 480       | 1250                    | 2250                    | 1250                    | 2250                    | 2250                         | 98,4           |                      |  |
| 1100   | 70 | 6  | 570       | 640       | 1250                    | 2250                    | 1250                    | 2250                    | 2250                         | 109,1          |                      |  |
| 1260   | 70 | 7  | 710       | 800       | 1250                    | 2250                    | 1250                    | 2250                    | 2250                         | 119,8          |                      |  |
| 1420   | 70 | 8  | 860       | 960       | 1250                    | 2250                    | 1250                    | 2250                    | 2250                         | 130,5          |                      |  |
| 1580   | 70 | 9  | 1000      | 1120      | 1250                    | 2250                    | 1250                    | 2250                    | 2250                         | 141,2          |                      |  |
| 1740   | 70 | 10 | 1140      | 1280      | 1250                    | 2250                    | 1250                    | 2250                    | 2250                         | 151,9          |                      |  |
| 1900   | 70 | 11 | 1280      | 1440      | 1250                    | 2150                    | 1250                    | 1980                    | 1980                         | 162,6          |                      |  |
| 2060   | 70 | 12 | 1425      | 1600      | 1250                    | 1780                    | 1250                    | 1630                    | 1630                         | 173,3          |                      |  |
| 2220   | 70 | 13 | 1565      | 1760      | 1250                    | 1490                    | 1250                    | 1370                    | 1370                         | 184,0          |                      |  |
| 2380   | 70 | 14 | 1705      | 1920      | 1250                    | 1270                    | 1180                    | 1160                    | 1160                         | 194,7          |                      |  |
| 2540   | 70 | 15 | 1845      | 2080      | 1090                    | 1090                    | 1010                    | 1000                    | 1000                         | 205,4          |                      |  |
| 2700   | 70 | 16 | 1990      | 2240      | 950                     | 950                     | 880                     | 870                     | 870                          | 216,1          |                      |  |
| 2860   | 70 | 17 | 2135      | 2400      | 840                     | 830                     | 770                     | 760                     | 760                          | 226,8          |                      |  |

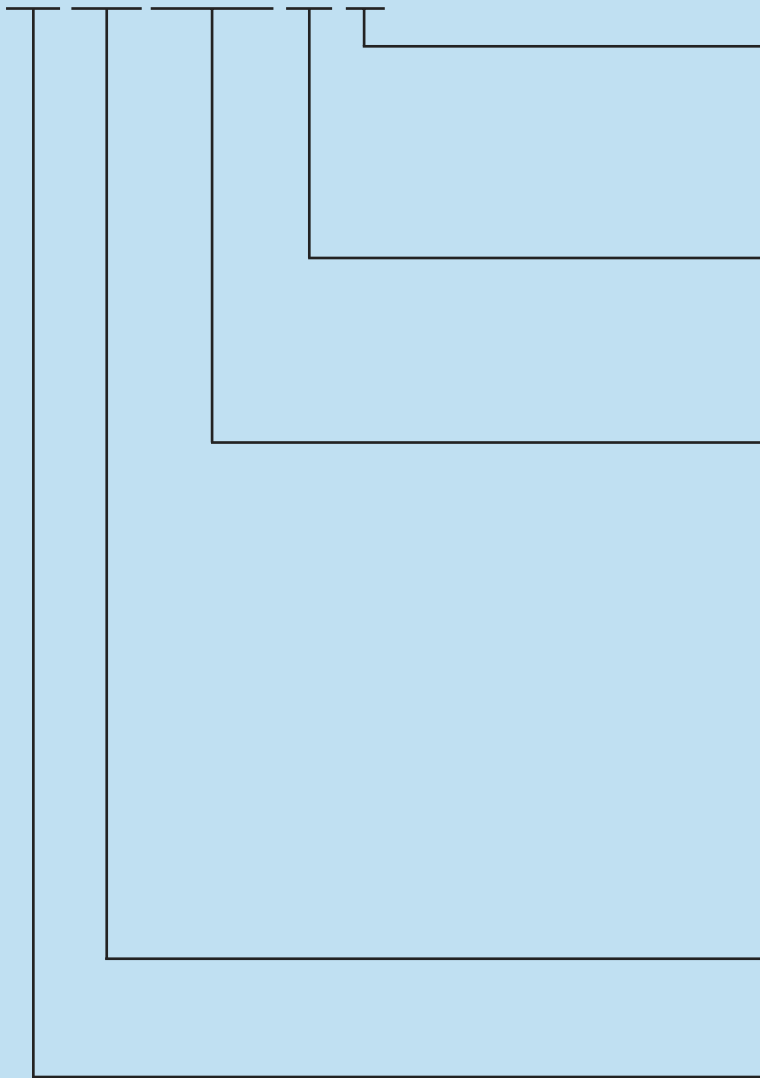
<sup>2)</sup> Maximum stroke between end stops:  
 S1 with bellows (standard version)  
 S2 without bellows (special version)

<sup>3)</sup> G<sub>A</sub> = Total weight of table  
 G<sub>O</sub> = Weight of mobile mass of table top

## Ordering details

### Type designation

**LTB 320.1900.A33014-BL-P5**



#### Table precision:

See page 8 for further information.

**P10**

**P5**

**P2**

**P1**

#### Covers:

See page 8 for further information.

**BL** with bellows

- without cover

**SC** with steel cover

#### Drive:

##### Ball screw:

See page 6 for further information.

**SH** no preload

**SX** no preload

**TN** preloaded

**TL** preloaded

**12 to 40** screw diameter

**05 to 40** screw lead

##### Linear motor drive:

See page 7 for further information.

**F** Motor type

**A** Motor type

**2 - 3** Number of motor phases

**09 - 40** primary part length [cm]

**06 - 14** primary part width [cm]

#### Length of table:

See dimension specifications

**150 to 2860** L1 Length of bottom part

#### Width of table:

See dimension specifications

**110 to 400** Width of bottom part

### For linear motor slides, the following additional details are required:

- Moving mass
- Possibly applied additional forces
- Maximum and minimum speeds; maximum acceleration
- Percentage duty cycle (description of operating cycle)
- Requirements of measuring system

such as signal period and accuracy

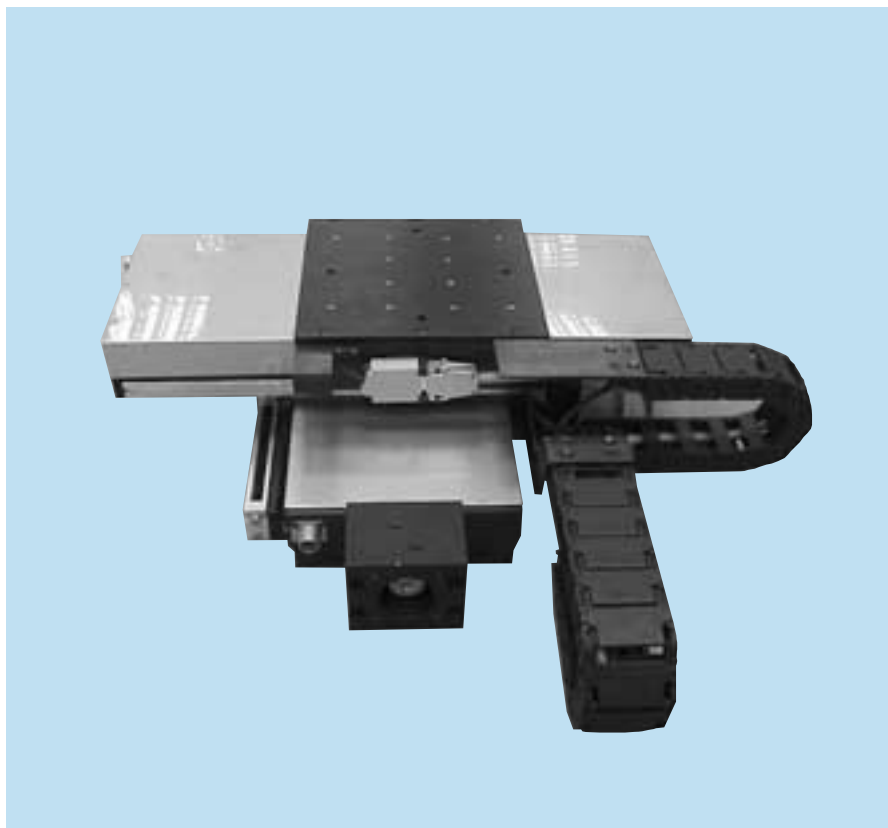
- Required positioning resolution
- Information on triggering

Please fill in the specification sheet on page 35 and return it to us.



## Application samples

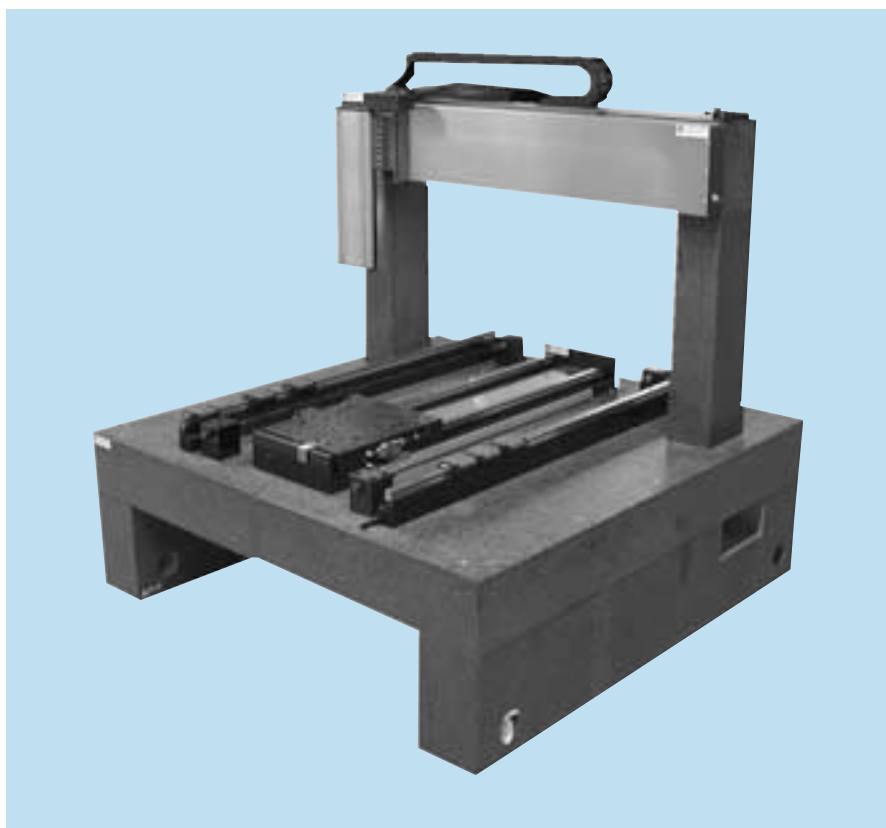
Solder paste printer



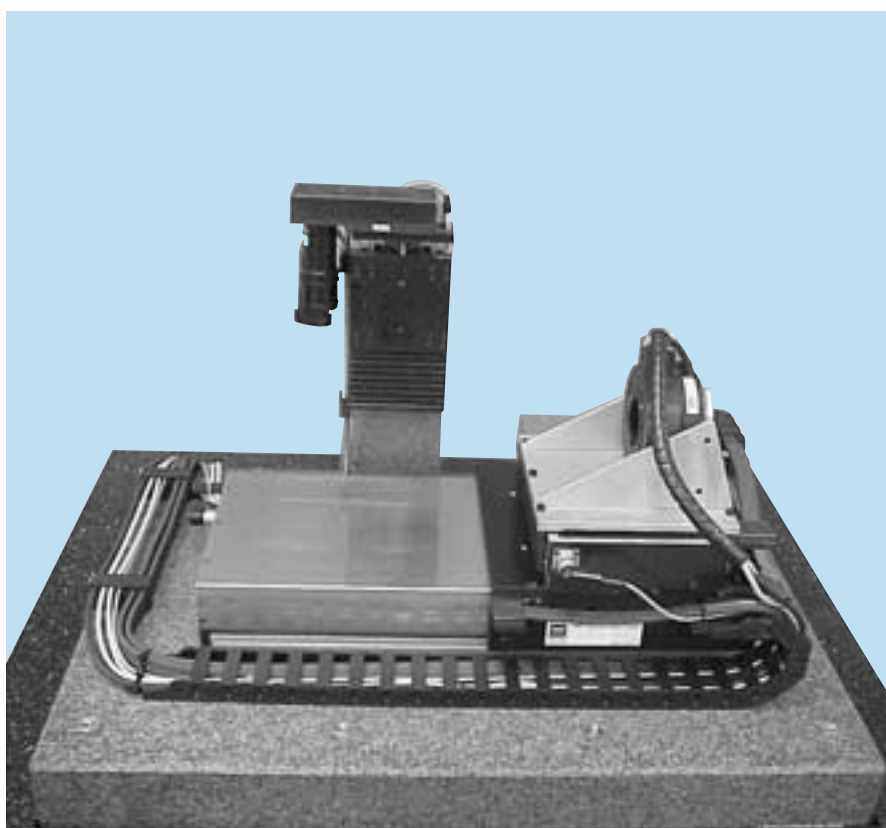
Drive for a milling / drilling unit



Laser cutting



Laser welding



## Possible application schemes

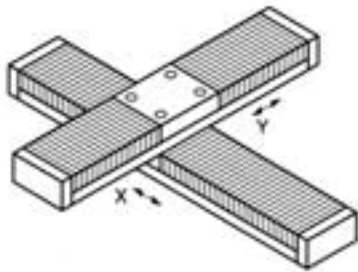


Fig. 1: Cross table X + Y

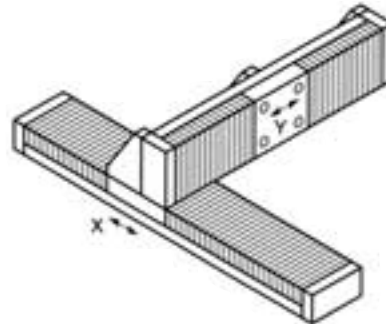


Fig. 2: Gantry X + Y

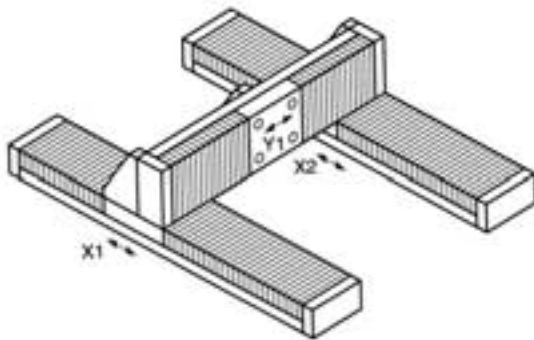


Fig. 3: Gantry X1/X2 + Y

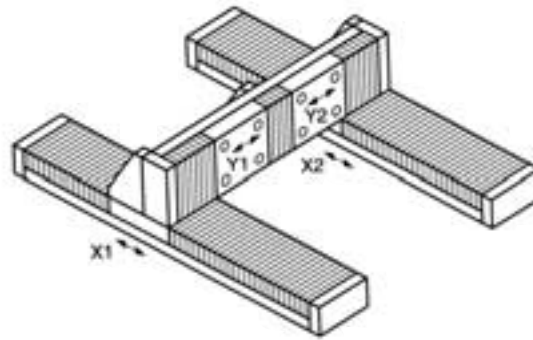


Fig. 4: Gantry X1/X2 + Y1 + Y2

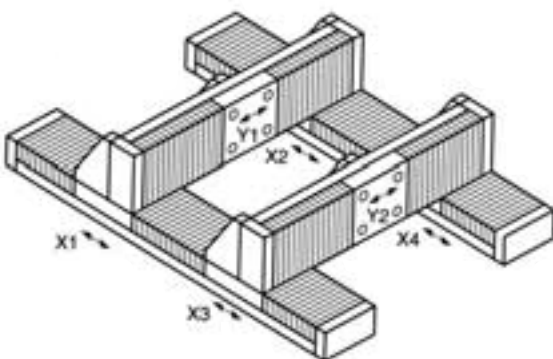


Fig. 5: Gantry X1/X2 + X3/X4 + Y1 + Y2

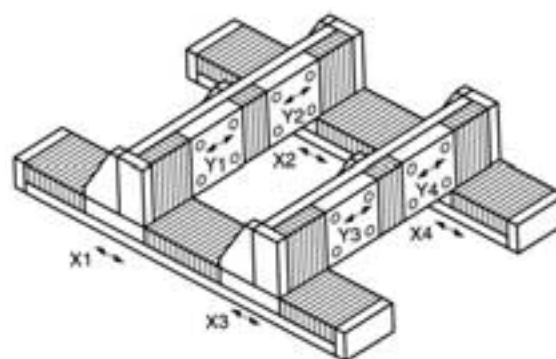


Fig. 6: Gantry X1/X2 + X3/X4 + Y1 + Y2 + Y3 + Y4

## Specification sheet for the selection of rail guide tables

1. Customer / customer address: .....

2. Application: .....

3. Number of axes in system: .....

4. Effective stroke / operating stroke [mm]: .....

5. Loads:  
additional moving mass [kg]:  
additional force [N]:  
direction of force [ $\pm X$ ,  $\pm Y$ ,  $\pm Z$ ]:

6. Speed:  
maximum [m/s]:  
minimum [m/s]:

7. Acceleration:  
maximum [m/s<sup>2</sup>]:

8. Mode of operation:  
duty cycle (ED) [%]:  
length of one operating cycle [s]:  
interval between two operating cycles [s]:  
operating hours per year [h]:

9. Specification life:  
operating hours [h]:

10. Precision:  
straightness T [ $\mu\text{m/S}$ ]:  
positioning tolerance (absolute positioning accuracy) [ $\mu\text{m}$ ]:  
positioning variance Ps (repeating accuracy) [ $\mu\text{m}$ ]:  
positioning resolution [ $\mu\text{m}$ ]:

11. Control:  
Components:  
  only servo control   
  complete control unit   
Positioning:  
  linear path control   
  continuous path control   
Interfaces: .....  
Options: .....

| X     | Y     | Z     |
|-------|-------|-------|
| ..... | ..... | ..... |
| ..... | ..... | ..... |
| ..... | ..... | ..... |
| ..... | ..... | ..... |
| ..... | ..... | ..... |
| ..... | ..... | ..... |
| ..... | ..... | ..... |
| ..... | ..... | ..... |
| ..... | ..... | ..... |
| ..... | ..... | ..... |
| ..... | ..... | ..... |
| ..... | ..... | ..... |
| ..... | ..... | ..... |
| ..... | ..... | ..... |
| ..... | ..... | ..... |
| ..... | ..... | ..... |
| ..... | ..... | ..... |
| ..... | ..... | ..... |

12. Environmental conditions: (contamination, interference fields, place of operation) .....

13. Accessories: (such as energy chain, cabling etc.) .....

14. For multi-axial systems: arrangement of axes in accordance with drawings (see page 34) .....

15. Remarks: .....

Filled in by / on:

# SKF Sales companies

## Australia

SKF AUSTRALIA PTY. LTD  
P. O. Box 301  
OAKLEIGH, Victoria 3166  
Phone: + 61 (3) 5 67 28 00  
Fax: + 61 (3) 5 67 28 88

## Austria

SKF ÖSTERREICH AG  
Postfach 87  
A-2355 WIENER NEUDORF  
Phone: + 43 (22 36) 6 70 90  
Fax: + 43 (22 36) 6 70 92 20

## Benelux

SKF MULTITEC BENELUX B. V.  
Kelvinbaan 16  
NL-3439 MT NIEUWEGEIN  
Phone: + 31 306 029 029  
Fax: + 31 306 029 028  
Phone: (B) + 32 2 5024270  
Fax: (B) + 32 2 5027336

## Canada

SKF CANADA LIMITED  
40 Executive Court  
SCARBOROUGH, ONTARIO  
MIS 4 N 4  
Phone: + 1 (4 16) 2 99 12 20  
Fax: + 1 (4 16) 2 92 03 99

## Czech Republic

SKF LOŽISKA A.S.  
P. O. Box 19  
U Měšťánského pivovaru 7  
17004 PRAHA 7  
Phone: + 420 (0)2 66 19 71 11  
Fax: + 420 (0)2 66 71 04 15

## Denmark

SKF MULTITEC  
Bramdrupskovvej 17  
DK-6000 KOLDING  
Phone: + 45 - 65 92 77 77  
Phone: + 46 - 42 25 35 00  
Fax: + 45 - 65 92 74 77

## Finland

SKF MULTITEC  
PL 60  
FIN-02201 ESPOO  
Phone: + 3 58 94 52 97 54  
Fax: + 3 58 94 12 77 65

## France

SKF EQUIPEMENTS  
30/32 Ave. Des Trois Peuples  
F-78185 SAINT QUENTIN  
Yvelines Cedex  
Phone: + 33 (1) 30 12 73 00  
Fax: + 33 (1) 30 12 69 09

## Germany

SKF LINEARSYSTEME GMBH  
Hans-Böckler-Straße 6  
97424 SCHWEINFURT  
Phone: + 49 (97 21) 6 57 - 0  
Fax: + 49 (97 21) 6 57 - 111

## Great Britain

SKF ENGINEERING PRODUCTS LTD.  
Sundon Park Road  
Luton  
BEDFORDSHIRE LU3 3BL  
Phone: + 44 (15 82) 49 0049  
Fax: + 44 (15 82) 49 6574

## Hong Kong

SKF CHINA LIMITED  
Unit A 35/F. Manulife Tower  
169 Electric Road · North Point  
HONG KONG  
Phone: + 852 - 25 10 81 11  
Fax: + 852 - 25 10 73 68

## Hungary

SKF SVÉD GOLYÓSCSAPÁGY  
RESZVENYTARSASAG  
Csata u. 25  
HU-2040 BUDAÖRS  
Phone: + 36 (23) 41 59 96  
Fax: + 36 (23) 41 59 28

## Italy

SKF MULTITEC S.p. A.  
Corso Vittorio Emanuele II, 94  
I-10121 TORINO  
Phone: + 39 (011) 57 17 61  
Fax: + 39 (011) 5 71 76 33

## Japan

SKF JAPAN LTD  
9-1 1-Chome, Shiba Daimon  
Minato - Ku  
TOKYO 105  
Phone: + 81 3 3436 4129  
Fax: + 81 3 3578 1014

## Norway

SKF MULTITEC A/S  
Jerikoveien 14  
1067 OSLO  
N-1007 OSLO 10  
Phone: + 47 (2) 2 30 71 70  
Fax: + 47 (2) 2 30 28 14

## Poland

SKF CENTRALA HANLOWO-  
TECHNICZNA SP. ZO.O.  
ul. Pulawska 303  
02-785 WARSZAWA  
Phone: + 48 22 549 4700  
Fax: + 48 22 549 4701

## Sweden

SKF MULTITEC AB  
Ekslingan 3 · HELSINGBORG  
Postal address: Box 222 48  
S-25024 HELSINGBORG  
Phone: + 46 (42) 25 35 00  
Fax: + 46 (42) 25 35 45

## Singapore

SKF SOUTH EAST ASIA &  
PACIFIC PTE. LTD.  
153 Gul Circle Jurong  
Singapore 629610  
Postal Address:  
Jurong Point P. O. Box 445  
SINGAPORE 916415  
Phone: + 65 - 8 61 69 22  
Fax: + 65 - 8 61 10 11

## Spain/Portugal

SKF PRODUCTOS INDUSTRIALES S.A.  
Apartado 769  
E-08080 BARCELONA  
Phone: + 34 (93) 3 77 99 77  
Fax: + 34 (93) 4 74 20 39/31 56

## Switzerland

SKF (SCHWEIZ)  
Eschenstraße 5  
CH-8603 SCHWERZENBACH  
Phone: + 41 (1) 8 25 81 81  
Fax: + 41 (1) 8 25 82 82

## USA

SKF MOTION TECHNOLOGIES  
1530 Valley Center Parkway  
USA-BETHLEHEM, PA 18017  
Phone: + 1 (610) 861 - 4800  
Fax: + 1 (610) 861 - 4811



**SKF Guiding Systems**



**SKF Ball & Roller Screws**



**SKF Actuators**

SKF Linear Motion offers a wide range of precision engineered linear motion components, units and systems. In addition to comprehensive product literature and software, SKF offers assistance from experienced linear motion engineers.

Linear Motion has **3 product lines** and a sales organisation based on **11 specialized sales companies** located in Europe, Japan and in the USA.

However the product availability as well as the product application is **world-wide granted by the SKF Bearing international network**. To get any other SKF address all over the world, please contact one of the companies below.

### Austria

#### Linear Motion

SKF Österreich AG

Phone: +43 22 36 6 7090

Fax: +43 22 36 6 709220

e-mail: multitec.austria@skf.com

### Benelux

#### SKF Multitec Benelux B.V.

Phone: +31 30 6029029

Fax: +31 30 6029028

Sales Office Belgium/Luxembourg:

Phone: +32 2 5024270

Fax: +32 2 5027336

e-mail: multitec\_benelux@skf.com

### France

#### SKF Equipements

Phone: +33 1 30 12 73 00

Fax: +33 1 30 12 69 09

e-mail: equipements.france@skf.com

### Germany

#### SKF Linearsysteme GmbH

Phone: +49 9721 657-0

Fax: +49 9721 657-111

e-mail: lin.sales@skf.com

### Italy

#### Multitec

SKF Industrie S.p.A.

Phone: +39 11 57 17 61

Fax: +39 11 5 71 76 33

e-mail: multitec.italy@skf.com

### Japan

#### SKF Japan Ltd.

Phone: +81 3 3436 4129

Fax: +81 3 3578 1014

e-mail: skf.japan@skf.com

### Spain

#### SKF Productos Industriales S.A

Phone: +34 93 377 99 77

+34 93 377 99 07

Fax: +34 93 474 20 39/31 56

e-mail: prod.ind@skf.com

### Switzerland

#### Linear Motion & Precision Technologies

Phone: +41 1 825 81 81

Fax: +41 1 825 82 82

e-mail: skf.schweiz@skf.com

### Sweden/Denmark/Finland/Norway

#### SKF Multitec Sweden

Phone: +46 42 25 35 00

Fax: +46 42 25 35 45/46

#### Sales Office Denmark

Phone: +45 65 92 77 77

Fax: +45 65 92 74 77

#### Sales Office Finland

Phone: +358 94 52 97 52

Fax: +358 94 12 77 65

#### Sales Office Norway

Phone: +47 22 30 71 70

Fax: +47 22 30 28 14

e-mail: multitec.nordic@skf.com

### United Kingdom

#### SKF Engineering Products Ltd.

Phone: +44 1582 490049

Fax: +44 1582 496574

e-mail: skf.epl@skf.com

### USA

#### SKF Motion Technologies

Phone: +1 610 861-4800

Fax: +1 610 861-4811

e-mail: motiontech.usa@skf.com

<http://www.linearmotion.skf.com>

