

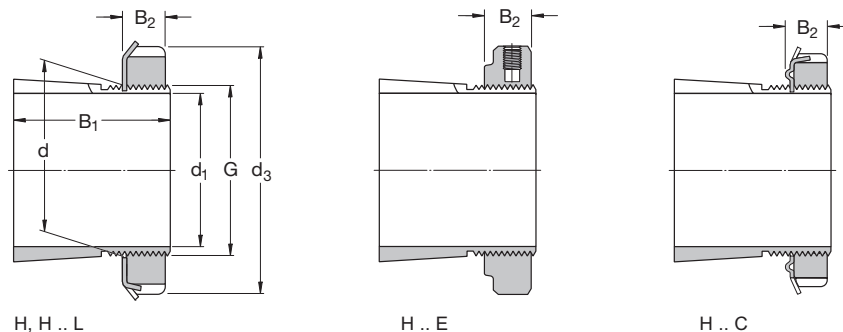


# Sleeves

<b>Adapter Sleeves</b>					
<b>Prefixes</b>		<b>HE</b>	HME locknut used	<b>AOH</b>	Metric sleeves having a bore diameter of 200 mm and above are supplied as standard with two oil-supply ducts at the threaded side and have distribution grooves around the circumference and in the axial direction on the outside surface as well as in the bore. <sup>2)</sup>
<b>H</b>	Sleeve for shafts in metric dimensions*	<b>L</b>	Sleeves with low section height nuts and washers (KML & MBL vs. KM & MB)	<b>AOHX</b>	Modified AOH
<b>HA</b>	Sleeve for shafts of 1/16" increments	<b>TL</b>	The standard HM..T nut and MB washer, have been replaced by HM30 and MS 30 nut and washer. These have a lower section height.	<b>Suffix</b>	
<b>HE</b>	Sleeve for shafts of 1/4" increments	<b>U</b>	Sleeve only (no nut/washer)	<b>G</b>	Thread pitch diameter changed to adhere to ISO specifications
<b>HS</b>	Sleeve for shafts of 1/8" increments	<hr/> <b>USA design</b> <hr/>		<hr/> <b>Special Features</b> <hr/>	
<b>OH</b>	Oil hole in large end of sleeve to inject oil between the sleeve and the bearing generally for metric shafts sizes if inch an example would be OHA-----.	<b>SNW</b>	Inch dimensions and fitted with N & AN locknuts and W and WO washers.	<b>Note:</b> Up to size 40, the sleeves are phosphated. Larger sizes are untreated and oiled.	
<b>OH..B</b>	Oil injected between bearing, sleeve and shaft. Sizes 32-40; one oil-supply duct from large end of sleeve. Size ≥ 44, two oil supply ducts from large end of sleeve.	<b>SNP</b>	Inch dimensions and fitted with N locknuts and PL lockplates	<hr/>	
<b>OH..H</b>	Oil injected between bearing and sleeve, one oil supply duct from nut side of sleeve.	<hr/> <b>Specifications</b> <hr/>			
<b>OH..HB</b>	Oil injected between bearing, sleeve and shaft. Sizes 32-40: One oil-supply duct from nut side of sleeve. Size ≥ 44 up; Two oil supply ducts from nut side of sleeve.	<b>Metric sleeves</b> To ISO 2982-1: 1995			
<b>Suffixes</b>		<b>Inch sleeves</b> To ANSI/ABMA Std. 8.2.			
<b>B</b>	Whitworth threads	<hr/> <b>Withdrawal sleeves</b> <hr/>			
<b>C</b>	Sleeves with ribbed washer to be used with sealed bearings**	<b>Prefixes</b>			
<b>E</b>	The standard lock nut and washer is replaced by a KMFE, washerless nut or the standard lock nut HM30 is replaced by an HME nut with a recessed outside diameter.	<b>AH</b>	Standard withdrawal sleeve, preservative coated (metric) <sup>2)</sup>		
		<b>AHX</b>	Modified AH (metric) <sup>2)</sup>		
		<b>AHA</b>	U.S.A. variant <sup>1)</sup>		
		<b>SK</b>	U.S.A. variant <sup>1)</sup>		
		<b>ASK</b>	U.S.A. variant <sup>1)</sup>		
		<sup>1)</sup> Being phased out			
		<sup>2)</sup> Sizes 04-40 now zinc phosphated			
				<sup>*</sup> Occasionally a metric sleeve will be used for an inch dimension shaft because the two dimensions are almost identical, i.e. 3 15/16" and 100 mm.	
				<sup>**</sup> Other low section height sleeves can also be used with sealed bearings.	
				<sup>***</sup> Some sealed bearings require wider sleeves.	

# Metric Sleeves

d 17 - 55 mm



Dimensions						Mass	Designations		Locking device	Appropriate hydraulic nut	bearing(s)
d <sub>1</sub>	d	d <sub>3</sub>	B <sub>1</sub>	B <sub>2</sub>	G		Adptr. sleeve with nut and lock device	Lock nut lock device			
mm						kg	-				
17	20	32	24	7	M 20x1	0.036	<b>H 204</b>	KM 4	MB 4	-	1204 EK
	20	32	28	7	M 20x1	0.04	<b>H 304</b>	KM 4	MB 4	-	2204 EK, 1304 EK
20	25	38	26	8	M 25x1.5	0.064	<b>H 205</b>	KM 5	MB 5	-	1205 EK
	25	38	29	8	M 25x1.5	0.071	<b>H 305</b>	KM 5	MB 5	-	2205 EK, 1305 EK, 22205 EK
	25	38	29	8.5	M 25x1.5	0.071	<b>H 305 C</b>	KM 5	MB 5 C	-	2205 E-2RS1KTN9
	25	38	29	10.5	M 25x1.5	0.076	<b>H 305 E</b>	KMFE 5	-	-	
25	30	45	27	8	M 30x1.5	0.086	<b>H 206</b>	KM 6	MB 6	-	1206 EK
	30	45	31	8	M 30x1.5	0.095	<b>H 306</b>	KM 6	MB 6	-	2206 EK, 1306 EK, 22206 EK
	30	45	31	8.5	M 30x1.5	0.095	<b>H 306 C</b>	KM 6	MB 6 C	-	2206 E-2RS1KTN9
	30	45	31	10.5	M 30x1.5	0.11	<b>H 306 E</b>	KMFE 6	-	-	C 2206 KTN9, C 2206 KV
	30	45	38	8	M 30x1.5	0.11	<b>H 2306</b>	KM 6	MB 6	-	2306 K
30	35	52	29	9	M 35x1.5	0.12	<b>H 207</b>	KM 7	MB 7	-	1207 EK
	35	52	35	9	M 35x1.5	0.14	<b>H 307</b>	KM 7	MB 7	-	2207 EK, 1307 EK, 22207 EK
	35	52	35	9.5	M 35x1.5	0.14	<b>H 307 C</b>	KM 7	MB 7 C	-	2207 E-2RS1KTN9
	35	52	35	11.5	M 35x1.5	0.15	<b>H 307 E</b>	KMFE 7	-	-	C 2207 KTN9, C 2207 KV
	35	52	43	9	M 35x1.5	0.16	<b>H 2307</b>	KM 7	MB 7	-	2307 EK
35	40	58	31	10	M 40x1.5	0.16	<b>H 208</b>	KM 8	MB 8	-	1208 EK
	40	58	36	10	M 40x1.5	0.17	<b>H 308</b>	KM 8	MB 8	-	2208 EK, 1308 EK, 22208 EK, 21308 CCK, C2208 KV
	40	58	36	10.5	M 40x1.5	0.17	<b>H 308 C</b>	KM 8	MB 8 C	-	2208 E-2RS1KTN9
	40	58	36	13	M 40x1.5	0.19	<b>H 308 E</b>	KMFE 8	-	-	C2208 KTN9
	40	58	46	10	M 40x1.5	0.22	<b>H 2308</b>	KM 8	MB 8	-	2308 EK, 22308 EK
40	45	65	33	11	M 45x1.5	0.21	<b>H 209</b>	KM 9	MB 9	-	1209 EK
	45	65	39	11	M 45x1.5	0.23	<b>H 309</b>	KM 9	MB 9	-	2209 EK, 1309 EK, 22209 EK, 21309 CCK
	45	65	39	11.5	M 45x1.5	0.23	<b>H 309 C</b>	KM 9	MB 9 C	-	2209 E-2RS1KTN9
	45	65	39	13	M 45x1.5	0.24	<b>H 309 E</b>	KMFE 9	-	-	C 2209 KTN9, C2209 KV
	45	65	50	11	M 45x1.5	0.27	<b>H 2309</b>	KM 9	MB 9	-	2309 EK, 22309 EK
45	50	70	35	12	M 50x1.5	0.24	<b>H 210</b>	KM 10	MB 10	HMV 10 E	1210 EK
	50	70	42	12	M 50x1.5	0.27	<b>H 310</b>	KM 10	MB 10	HMV 10 E	2210 EK, 1310 EK, 22210 EK, 21310 CCK
	50	70	42	12.5	M 50x1.5	0.27	<b>H 310 C</b>	KM 10	MB 10 C	HMV 10 E	2210-2RS1KTN9
	50	70	42	14	M 50x1.5	0.3	<b>H 310 E</b>	KMFE 10	-	HMV 10 E	C 2210 KTN9, C 2210 KV
	50	70	55	12	M 50x1.5	0.34	<b>H 2310</b>	KM 10	MB 10	HMV 10 E	2310 K, 22310 EK
50	55	75	37	12.5	M 55x2	0.28	<b>H 211</b>	KM 11	MB 11	HMV 11 E	1211 EK
	55	75	45	12.5	M 55x2	0.32	<b>H 311</b>	KM 11	MB 11	HMV 11 E	2211 EK, 1311 EK, 22211 EK, 21311 CCK
	55	75	45	13	M 55x2	0.32	<b>H 311 C</b>	KM 11	MB 11 C	HMV 11 E	2211 E-2RS1KTN9
	55	75	45	14	M 55x2	0.34	<b>H 311 E</b>	KMFE 11	-	HMV 11 E	C 2211 KTN9, C2211 KV
	55	75	59	12.5	M 55x2	0.39	<b>H 2311</b>	KM 11	MB 11	HMV 11 E	2311 K, 22311 EK
55	60	80	38	13	M 60x2	0.31	<b>H 212</b>	KM 12	MB 12	HMV 12 E	1212 EK
	60	80	47	13	M 60x2	0.36	<b>H 312</b>	KM 12	MB 12	HMV 12 E	2212 EK, 1312 EK, 22212 EK, 21312 CCK, C 2212 KV
	60	80	47	14	M 60x2	0.4	<b>H 312 E</b>	KMFE 12	-	HMV 12 E	C 2212 KTN9
	60	80	62	13	M 60x2	0.45	<b>H 2312</b>	KM 12	MB 12	HMV 12 E	2312 K, 22312 EK

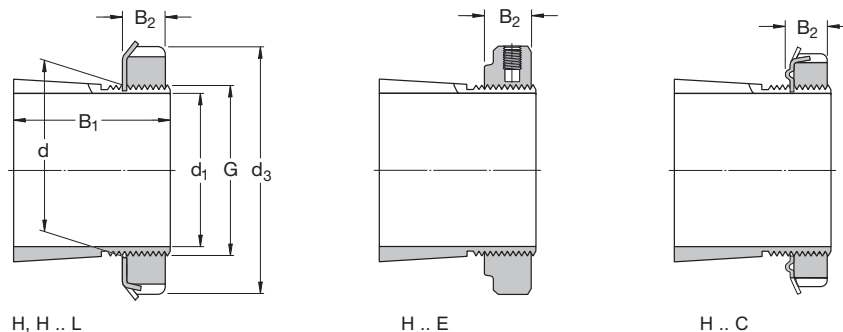
# Metric Sleeves

## d 60 - 110 mm

Dimensions						Mass	Designations					
d <sub>1</sub>	d	d <sub>3</sub>	B <sub>1</sub>	B <sub>2</sub>	G		Adptr. sleeve with nut and lock device	Lock nut	Locking device	Appropriate hydraulic nut	bearing(s)	
mm						kg	–					
60	65	85	40	14	M 65x2	0.36	<b>H 213</b>	KM 13	MB 13	HMV 13 E	1213 EK	
	65	85	50	14	M 65x2	0.42	<b>H 313</b>	KM 13	MB 13	HMV 13 E	2213 EK, 1313 EK, 22213 EK, 21213 CCK, C 2213 KV	
	65	85	50	15	M 65x2	0.42	<b>H 313 C</b>	KM 13	MB 13 C	HMV 13 E	22213 E-2RS1KTN9	
	65	85	50	15	M 65x2	0.43	<b>H 313 E</b>	KMFE 13	–	HMV 13 E	C 2213 KTN9	
	65	85	65	14	M 65x2	0.52	<b>H 2313</b>	KM 13	MB 13	HMV 13 E	2313 K, 22313 EK	
	70	92	52	14	M 70x2	0.67	<b>H 314</b>	KM 14	MB 14	HMV 14 E	22214EK, 21314 CCK,C 2214 KV	
	70	92	52	15	M 70x2	0.67	<b>H 314 E</b>	KMFE 14	–	HMV 14 E	C 2214 KTN9	
	70	92	68	14	M 70x2	0.88	<b>H 2314</b>	KM 14	MB 14	HMV 14 E	22314 EK, C 2314 K	
	65	75	98	43	15	M 75x2	0.66	<b>H 215</b>	KM 15	MB 15	HMV 15 E	1215 K
		75	98	55	15	M 75x2	0.78	<b>H 315</b>	KM 15	MB 15	HMV 15 E	2215 K, 1315 K, 22215 EK, 21315 CCK, C 2215 KV
75		98	55	16	M 75x2	0.8	<b>H 315 E</b>	KMFE 15	–	HMV 15 E	C 2215 K	
75		98	73	15	M 75x2	1.1	<b>H 2315</b>	KM 15	MB 15	HMV 15 E	2315 K, 22315 EK, C 2315 K	
70	80	105	46	17	M 80x2	0.81	<b>H 216</b>	KM 16	MB 16	HMV 16 E	1216 K	
	80	105	59	17	M 80x2	0.95	<b>H 316</b>	KM 16	MB 16	HMV 16 E	2216 EK, 1316 K, 22216 EK, 21316 CCK. C 2216 KV	
	80	105	59	18	M 80x2	1.01	<b>H 316 E</b>	KMFE 16	–	HMV 16 E	C 2216 K	
	80	105	78	17	M 80x2	1.2	<b>H 2316</b>	KM 16	MB 16	HMV 16 E	2316 K, 22316 EK, C 2316 K	
75	85	110	50	18	M 85x2	0.94	<b>H 217</b>	KM 17	MB 17	HMV 17 E	1217 K	
	85	110	63	18	M 85x2	1.1	<b>H 317</b>	KM 17	MB 17	HMV 17 E	2217 K, 1317 K, 22217 EK, 21317 CCK, C 2217 KV	
	85	110	63	19	M 85x2	1.17	<b>H 317 E</b>	KMFE 17	–	HMV 17 E	C 2217 K	
	85	110	82	18	M 85x2	1.35	<b>H 2317</b>	KM 17	MB 17	HMV 17 E	2317 K, 22317 EK, C 2317 K	
80	90	120	52	18	M 90x2	1.1	<b>H 218</b>	KM 18	MB 18	HMV 18 E	1218 K	
	90	120	65	18	M 90x2	1.3	<b>H 318</b>	KM 18	MB 18	HMV 18 E	2218 K, 1318 K, 22218 EK, 21318 CCK, C2218 KV	
	90	120	65	19	M 90x2	1.43	<b>H 318 E</b>	KMFE 18	–	HMV 18 E	C 2218 K	
	90	120	86	18	M 90x2	1.6	<b>H 2318</b>	KM 18	MB 18	HMV 18 E	2318 K, 23218 CCK/W33, 22318 EK, C2318 K	
85	95	125	55	19	M 95x2	1.25	<b>H 219</b>	KM 19	MB 19	HMV 19 E	1219 K	
	95	125	68	19	M 95x2	1.4	<b>H 319</b>	KM 19	MB 19	HMV 19 E	2219 K, 1319K, 22219 EK, 21319 CCK	
	95	125	68	20	M 95x2	1.41	<b>H 319 E</b>	KMFE 19	–	HMV 19 E	C 2219 K	
	95	125	90	19	M 95x2	1.8	<b>H 2319</b>	KM 19	MB 19	HMV 19 E	2319 K, 22319 EK, C 2319 K	
90	100	130	58	20	M 100x2	1.4	<b>H 220</b>	KM 20	MB 20	HMV 20 E	1220 K	
	100	130	71	20	M 100x2	1.6	<b>H 320</b>	KM 20	MB 20	HMV 20 E	2220 K, 1320 K, 22220 EK, 21320 CCK,	
	100	130	71	21	M 100x2	1.72	<b>H 320 E</b>	KMFE 20	–	HMV 20 E	C 2220 K	
	100	130	76	20	M 100x2	1.8	<b>H 3120</b>	KM 20	MB 20	HMV 20 E	23120 CCK/W33, C 3120 K, C3120 KV	
	100	130	97	20	M 100x2	2	<b>H 2320</b>	KM 20	MB 20	HMV 20 E	2320 K, 23220 CCK/W33, 22320 EK, C2320 K	
100	110	145	63	21	M 110x2	1.8	<b>H 222</b>	KM 22	MB 22	HMV 22 E	1222 K	
	110	145	77	21	M 110x2	2.04	<b>H 322</b>	KM 22	MB 22	HMV 22 E	2222 K, 1322 K, 23022 CCK, 22222 EK, 21322 CCK	
	110	145	77	21.5	M 110x2	2.11	<b>H 322 E</b>	KMFE 22	–	HMV 22 E	C 3022 K, C 2222 K	
	110	145	81	21	M 110x2	2.1	<b>H 3122</b>	KM 22	MB 22	HMV 22 E	23122 CCK/W33	
	110	145	105	21	M 110x2	2.75	<b>H 2322</b>	KM 22	MB 22	HMV 22 E	2322 K, 23222 CCK/W33, 22322 EK	
110	120	145	72	22	M 120x2	1.8	<b>H 3024</b>	KML 24	MBL 24	HMV 24 E	1224 K, 23024 CCK/W33, C3024 K	
	120	155	72	26	M 120x2	1.87	<b>H 3024 E</b>	KMFE 24	–	HMV 24 E	C 3024 K	
	120	155	88	22	M 120x2	2.5	<b>H 3124</b>	KM 24	MB 24	HMV 24 E	23124 CCCK/W33, 22224 EK	
	120	145	88	22	M 120x2	2.5	<b>H 3124 L</b>	KML 24	MBL 24	HMV 24 E	C 2224 K	
	120	155	112	22	M 120x2	3	<b>H 2324</b>	KM 24	MB 24	HMV 24 E	23224 CCK/W33, 22324 CCK/W33	
	120	145	112	22	M 120x2	3.12	<b>H 2324 L</b>	KML 24	MBL 24	HMV 24 E	C 3224 K	

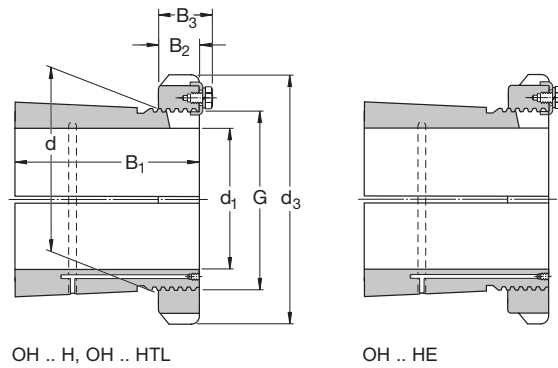
# Metric Sleeves

d 115 - 180 mm



Dimensions						Mass	Designations		Locking device	Appropriate hydraulic nut	bearing(s)
d <sub>1</sub>	d	d <sub>3</sub>	B <sub>1</sub>	B <sub>2</sub>	G		Adptr. sleeve with nut and lock device	Lock nut			
mm						kg	-				
<b>115</b>	130	155	80	23	M 130x2	2.8	<b>H 3026</b>	KML 26	MBL 26	HMV 26 E	23026 CCK/W33, C3026 K
	130	165	92	23	M 130x2	3.45	<b>H 3126</b>	KM 26	MB 26	HMV 26 E	23126 CCK/W33, 22226 EK
	130	155	92	23	M 130x2	3.65	<b>H 3126 L</b>	KML 26	MBL 26	HMV 26 E	C 2226 K
	130	165	121	23	M 130x2	4.45	<b>H 2326</b>	KM 26	MB 26	HMV 26 E	23226 CCK/W33, 22326 CCK/W33
<b>125</b>	140	165	82	24	M 140x2	3.05	<b>H 3028</b>	KML 28	MBL 28	HMV 28 E	23028 CCK/W33, C 3028 K
	140	180	97	24	M 140x2	4.1	<b>H 3128</b>	KM 28	MB 28	HMV 28 E	23128 CCK/W33, 22228 CCK/W33
	140	165	97	24	M 140x2	3.62	<b>H 3128 L</b>	KML 28	MBL 28	HMV 28 E	C 2228 K
	140	180	131	24	M 140x2	5.4	<b>H 2328</b>	KM 28	MB 28	HMV 28 E	23228 CCK/W33, 22328 CCK/W33
<b>135</b>	150	180	87	26	M 150x2	3.75	<b>H 3030</b>	KML 30	MBL 30	HMV 30 E	23030 CCK/W33
	150	195	111	26	M 150x2	5.25	<b>H 3130</b>	KM 30	MB 30	HMV 30 E	23130 CCK/W33, 22230 CCK/W33
	150	180	111	26	M 150x2	4.7	<b>H 3130 L</b>	KML 30	MBL 30	HMV 30 E	C 3130 K, 2230 K, C3130 K, C2230 K
	150	195	139	26	M 150x2	6.4	<b>H 2330</b>	KM 30	MB 30	HMV 30 E	23230 CCK/W33, 22330 CCK/W33
<b>140</b>	160	190	93	27.5	M 160x3	5.1	<b>H 3032</b>	KML 32	MBL 32	HMV 32 E	23032 CCK/W33, C3032 K
	160	210	119	27.5	M 160x3	7.25	<b>H 3132</b>	KM 32	MB 32	HMV 32 E	23132 CCK/W33, 22232 CCK/W33
	160	190	119	27.5	M 160x3	6.4	<b>H 3132 L</b>	KML 32	MBL 32	HMV 32 E	C 3132 K
	160	210	147	27.5	M 160x3	8.8	<b>H 2332</b>	KM 32	MB 32	HMV 32 E	23232 CCK/W33, 22332 CCK/W33
	160	190	147	27.5	M 160x3	7.95	<b>H 2332 L</b>	KML 32	MBL 32	HMV 32 E	C 3232 K
<b>150</b>	170	200	101	28.5	M 170x3	5.8	<b>H 3034</b>	KML 34	MBL 34	HMV 34 E	23034 CCK/W33, C 3034 K
	170	220	122	28.5	M 170x3	8.1	<b>H 3134</b>	KM 34	MB 34	HMV 34 E	23134 CCK/W33, 22234 CCK/W33
	170	200	122	28.5	M 170x3	7.15	<b>H 3134 L</b>	KML 34	MBL 34	HMV 34 E	C 3134 K, C2334 K
	170	220	154	28.5	M 170x3	9.9	<b>H 2334</b>	KM 34	MB 34	HMV 34 E	23234 CCK/W33, 22334 CCK/W33
<b>160</b>	180	210	87	29.5	M 180x3	5.7	<b>H 3936</b>	KML 36	MBL 36	HMV 36 E	23936 CCK/W33
	180	210	109	29.5	M 180x3	6.7	<b>H 3036</b>	KML 36	MBL 36	HMV 36 E	23036 CCK/W33, C3036 K
	180	230	131	29.5	M 180x3	9.15	<b>H 3136</b>	KM 36	MB 36	HMV 36 E	23136 CCK/W33, 22236 CCK/W33
	180	210	131	29.5	M 180x3	8.15	<b>H 3136 L</b>	KML 36	MBL 36	HMV 36 E	C 3136 K
	180	230	161	30	M 180x3	11	<b>H 2336</b>	KM 36	MB 36	HMV 36 E	23236 CCK/W33, 22336 CCK/W33, C3236 K
<b>170</b>	190	220	89	30.5	M 190x3	6.2	<b>H 3938</b>	KML 38	MBL 38	HMV 38 E	23938 CCK/W33
	190	220	112	30.5	M 190x3	7.25	<b>H 3038</b>	KML 38	MBL 38	HMV 38 E	23038 CCK/W33, C 3038 K
	190	240	141	30.5	M 190x3	10.5	<b>H 3138</b>	KM 38	MB 38	HMV 38 E	23138 CCK/W33, 22238 CCK/W33
	190	240	169	30.5	M 190x3	12	<b>H 2338</b>	KM 38	MB 38	HMV 38 E	23238 CCK/W33, 22338 CCK/W33
<b>180</b>	200	240	98	31.5	M 200x3	7.9	<b>H 3940</b>	KML 40	MBL 40	HMV 40 E	23940 CCK/W33
	200	240	120	31.5	M 200x3	8.9	<b>H 3040</b>	KML 40	MBL 40	HMV 40 E	23040 CCK/W33, C 3040 K
	200	250	150	31.5	M 200x3	12	<b>H 3140</b>	KM 40	MB 40	HMV 40 E	23140 CCK/W33, 22240 CCK/W33, C3140 K
	200	250	176	31.5	M 200x3	13.5	<b>H 2340</b>	KM 40	MB 40	HMV 40 E	23240 CCK/W33, 22340 CCK/W33

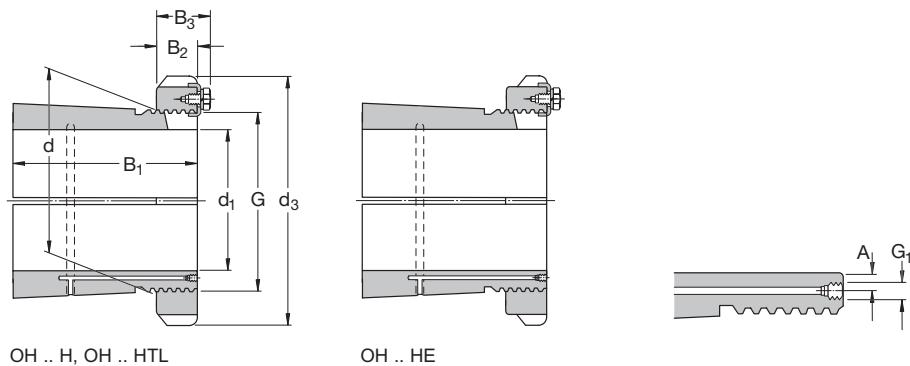
# Metric Sleeves d 200 - 400 mm



Dimensions										Mass	Designations	Lock nut	Locking device	Appropriate hydraulic nut	bearing(s)
d <sub>1</sub>	d	d <sub>3</sub>	B <sub>1</sub>	B <sub>2</sub>	B <sub>3</sub>	G	G <sub>1</sub>	A		Adapter sleeve with nut and locking device					
mm										kg	-				
200	220	260	96	30	41	Tr 220x4	M 6	4.2	7.95	<b>OH 3944 H</b>	HM 3044	MS 3044	HMV 44 E	23944 CCK/W33	
	220	260	126	30	41	Tr 220x4	M 6	4.2	9.9	<b>OH 3044 H</b>	HM 3044	MS 3044	HMV 44 E	C 3044 K	
	220	280	161	35	-	Tr 220x4	M 6	4.2	15	<b>OH 3144 H</b>	HM 44 T	MB 44	HMV 44 E	23144 CCK/W33, 22244 CCK/W33, C 2244 K	
	220	260	161	30	41	Tr 220x4	M 6	4.2	14.3	<b>OH 3144 HTL</b>	HM 3044	MS 3044	HMV 44 E	C 3144 K	
	220	280	186	35	-	Tr 220x4	M 6	4.2	17	<b>OH 2344 H</b>	HM 44 T	MB 44	HMV 44 E	23244 CCK/W33, 22344 CCK/W33	
	220	280	161	35	-	Tr 220x4	M 6	4.2	17	<b>OH 3044 H</b>	HM 3044	MS 3044	HMV 44 E	23044 CCK/W33, C 3048 K	
220	240	290	101	34	46	Tr 240x4	M 6	4.2	11	<b>OH 3948 H</b>	HM 3048	MS 3052-48	HMV 48 E	23948 CCK/W33	
	240	290	133	34	46	Tr 240x4	M 6	4.2	12	<b>OH 3048 H</b>	HM 3048	MS 3052-48	HMV 48 E	23048 CCK/W33, C 3048 K	
	240	300	172	37	-	Tr 240x4	M 6	4.2	16.5	<b>OH 3148 H</b>	HM 48 T	MB 48	HMV 48 E	23148 CCK/W33, 22248 CCK/W33	
	240	290	172	34	46	Tr 240x4	M 6	4.2	15.1	<b>OH 3148 HTL</b>	HM 3048	MS 3052-48	HMV 48 E	C 3148 K	
	240	300	199	37	-	Tr 240x4	M 6	4.2	19	<b>OH 2348 H</b>	HM 48 T	MB 48	HMV 48 E	23248 CCK/W33, 22348 CCK/W33	
	240	300	172	34	46	Tr 240x4	M 6	4.2	15.1	<b>OH 3048 H</b>	HM 3048	MS 3052-48	HMV 48 E	23048 CCK/W33, C 3048 K	
240	260	310	116	34	46	Tr 260x4	M 6	4.2	11.7	<b>OH 3952 H</b>	HM 3052	MS 3052-48	HMV 52 E	23952 CCK/W33	
	260	310	145	34	46	Tr 260x4	M 6	4.2	13.5	<b>OH 3052 H</b>	HM 3052	MS 3052-48	HMV 52 E	23052 CCK/W33, C 3056 K	
	260	330	190	39	-	Tr 260x4	M 6	4.2	21	<b>OH 3152 H</b>	HM 52 T	MB 52	HMV 52 E	23152 CCK/W33, 22252 CACK/W33	
	260	310	190	34	46	Tr 260x4	M 6	4.2	17.7	<b>OH 3152 HTL</b>	HM 3052	MS 3052-48	HMV 52 E	C 3152 K	
	260	330	211	39	-	Tr 260x4	M 6	4.2	23	<b>OH 2352 H</b>	HM 52 T	MB 52	HMV 52 E	23252 CCK/W33, 22352 CACK/W33	
	260	330	190	39	-	Tr 260x4	M 6	4.2	21	<b>OH 3052 H</b>	HM 3052	MS 3052-48	HMV 52 E	23052 CCK/W33, C 3056 K	
260	280	330	121	38	50	Tr 280x4	M 6	4.2	15.3	<b>OH 3956 H</b>	HM 3056	MS 3056	HMV 56 E	23956 CCK/W33	
	280	330	152	38	50	Tr 280x4	M 6	4.2	16	<b>OH 3056 H</b>	HM 3056	MS 3056	HMV 56 E	23056 CCK/W33, C 3056 K	
	280	350	195	41	-	Tr 280x4	M 6	4.2	23	<b>OH 3156 H</b>	HM 56 T	MB 56	HMV 56 E	23156 CCK/W33, 22256 CACK/W33	
	280	330	195	38	50	Tr 280x4	M 6	4.2	19.3	<b>OH 3156 HTL</b>	HM 3056	MS 3056	HMV 56 E	C 3156 K	
	280	350	224	41	-	Tr 280x4	M 6	4.2	27	<b>OH 2356 H</b>	HM 56 T	MB 56	HMV 56 E	23256 CACK/W33, 22356 CCK/W33	
	280	350	195	38	50	Tr 280x4	M 6	4.2	19.3	<b>OH 3056 H</b>	HM 3056	MS 3056	HMV 56 E	23056 CCK/W33, C 3056 K	
280	300	360	140	42	54	Tr 300x4	M 6	4.2	20	<b>OH 3960 H</b>	HM 3060	MS 3060	HMV 60 E	23960 CCK/W33	
	300	360	168	42	54	Tr 300x4	M 6	4.2	20.5	<b>OH 3060 H</b>	HM 3060	MS 3060	HMV 60 E	23060 CCK/W33, C 3060 K	
	300	380	208	40	53	Tr 300x4	M 6	4.2	29	<b>OH 3160 H</b>	HM 3160	MS 3160	HMV 60 E	23160 CCK/W33, 22260 CACK/W33, C 3160 K	
	300	360	168	42	54	Tr 300x4	M 6	4.2	20.5	<b>OH 3060 H</b>	HM 3060	MS 3060	HMV 60 E	23060 CCK/W33, C 3060 K	
	300	380	240	40	53	Tr 300x4	M 6	4.2	32	<b>OH 3260 H</b>	HM 3160	MS 3160	HMV 60 E	23260 CACK/W33	
	300	380	208	40	53	Tr 300x4	M 6	4.2	29	<b>OH 3160 H</b>	HM 3160	MS 3160	HMV 60 E	23160 CCK/W33, 22260 CACK/W33, C 3160 K	
300	320	380	140	42	55	Tr 320x5	M 6	4	21.5	<b>OH 3964 H</b>	HM 3064	MS 3068-64	HMV 64 E	23964 CACK/W33	
	320	380	171	42	55	Tr 320x5	M 6	4	22	<b>OH 3064 H</b>	HM 3064	MS 3068-64	HMV 64 E	23064 CCK/W33, C 3064 KM	
	320	400	226	42	56	Tr 320x5	M 6	4	32	<b>OH 3164 H</b>	HM 3164	MS 3164	HMV 64 E	23164 CCK/W33, 22264 CACK/W33, C 3164 KM	
	320	380	140	42	55	Tr 320x5	M 6	4	21.5	<b>OH 3064 H</b>	HM 3064	MS 3068-64	HMV 64 E	23064 CCK/W33, C 3064 KM	
	320	400	258	42	56	Tr 320x5	M 6	4	35	<b>OH 3264 H</b>	HM 3164	MS 3164	HMV 64 E	23264 CACK/W33	
	320	400	226	42	56	Tr 320x5	M 6	4	32	<b>OH 3164 H</b>	HM 3164	MS 3164	HMV 64 E	23164 CCK/W33, 22264 CACK/W33, C 3164 KM	
320	340	400	144	45	58	Tr 340x5	M 6	4	24.5	<b>OH 3968 H</b>	HM 3068	MS 3068-64	HMV 68 E	23968 CCK/W33	
	340	400	187	45	58	Tr 340x5	M 6	4	27	<b>OH 3068 H</b>	HM 3068	MS 3068-64	HMV 68 E	23068 CCK/W33, C 3068 KM	
	340	440	254	55	72	Tr 340x5	M 6	4	50	<b>OH 3168 H</b>	HM 3168	MS 3172-68	HMV 68 E	23168 CCK/W33, C 3168 KM	
	340	400	187	45	58	Tr 340x5	M 6	4	27	<b>OH 3068 H</b>	HM 3068	MS 3068-64	HMV 68 E	23068 CCK/W33, C 3068 KM	
	340	440	288	55	72	Tr 340x5	M 6	4	51.5	<b>OH 3268 H</b>	HM 3168	MS 3172-68	HMV 68 E	23268 CACK/W33	
	340	440	288	55	72	Tr 340x5	M 6	4	51.5	<b>OH 3168 H</b>	HM 3168	MS 3172-68	HMV 68 E	23168 CCK/W33, C 3168 KM	
340	360	420	144	45	58	Tr 360x5	M 6	4	25.2	<b>OH 3972 H</b>	HM 3072	MS 3072	HMV 72 E	23972 CACK/W33	
	360	420	144	45	58	Tr 360x5	M 6	4	25.2	<b>OH 3972 HE</b>	HME 3072	MS 3072	HMV 72 E	C 3972 KM	
	360	420	188	45	58	Tr 360x5	M 6	4	29	<b>OH 3072 H</b>	HM 3072	MS 3072	HMV 72 E	23072 CCK/W33, C 3072 KM	
	360	460	259	58	75	Tr 360x5	M 6	4	56	<b>OH 3172 H</b>	HM 3172	MS 3172-68	HMV 72 E	23172 CACK/W33, C 3172 KM	
	360	460	299	58	75	Tr 360x5	M 6	4	60.5	<b>OH 3272 H</b>	HM 3172	MS 3172-68	HMV 72 E	23272 CACK/W33	
	360	460	299	58	75	Tr 360x5	M 6	4	60.5	<b>OH 3172 H</b>	HM 3172	MS 3172-68	HMV 72 E	23172 CACK/W33, C 3172 KM	
360	380	450	164	48	62	Tr 380x5	M 6	4	31.5	<b>OH 3976 H</b>	HM 3076	MS 3080-76	HMV 76 E	23976 CCK/W33, C 3976 KMB	
	380	450	193	48	62	Tr 380x5	M 6	4	35.5	<b>OH 3076 H</b>	HM 3076	MS 3080-76	HMV 76 E	23076 CCK/W33, C 3076 KM	
	380	490	264	60	77	Tr 380x5	M 6	4	61.5	<b>OH 3176 H</b>	HM 3176	MS 3176	HMV 76 E	23176 CACK/W33	
	380	450	164	48	62	Tr 380x5	M 6	4	31.5	<b>OH 3076 H</b>	HM 3076	MS 3080-76	HMV 76 E	23076 CCK/W33, C 3076 KM	
	380	490	310	60	77	Tr 380x5	M 6	4	69.5	<b>OH 3276 H</b>	HM 3176	MS 3176	HMV 76 E	23276 CACK/W33	
	380	490	310	60	77	Tr 380x5	M 6	4	69.5	<b>OH 3176 H</b>	HM 3176	MS 3176	HMV 76 E	23176 CACK/W33	
380	400	470	168	52	66	Tr 400x5	M 6	4	35	<b>OH 3980 H</b>	HM 3080	MS 3080-76	HMV 80 E	23980 CACK/W33	
	400	470	210	52	66	Tr 400x5	M 6	4	40	<b>OH 3080 H</b>	HM 3080	MS 3080-76	HMV 80 E	23080 CCK/W33, C 3080 KM	
	400	520	272	62	82	Tr 400x5	M 6	4	73	<b>OH 3180 H</b>	HM 3180	MS 3184-80	HMV 80 E	23180 CACK/W33	
	400	470	168	52	66	Tr 400x5	M 6	4	35	<b>OH 3080 H</b>	HM 3080	MS 3080-76	HMV 80 E	23080 CCK/W33, C 3080 KM	
	400	520	328	62	82	Tr 400x5	M 6	4	87	<b>OH 3280 H</b>	HM 3180	MS 3184-80	HMV 80 E	23280 CACK/W33	
	400	520	328	62	82	Tr 400x5	M 6	4	87	<b>OH 3180 H</b>	HM 3180	MS 3184-80	HMV 80 E	23180 CACK/W33	
400	420	490	168	52	66	Tr 420x5	M 6	4	36	<b>OH 3984 H</b>	HM 3084	MS 3084	HMV 84 E	23984 CACK/W33	
	420	490	168	52	66	Tr 420x5	M 6	4	36	<b>OH 3984 HE</b>	HME 3084	MS 3084	HMV 84 E	C 3984 KM	
	420	490	212	52	66	Tr 420x5	M 6	4	47	<b>OH 3084 H</b>	HM 3084	MS 3084	HMV 84 E	23084 CACK/W33, C 3084 KM	
	420	540	304	70	90	Tr 420x5	M 6	4	80	<b>OH 3184 H</b>	HM 3184	MS 3184-80	HMV 84 E	23184 CCK/W33, C 3184 KM	
	420	540	352	70	90	Tr 420x5	M 6	4	96	<b>OH 3284 H</b>	HM 3184	MS 3184-80	HMV 84 E	23284 CACK/W33	
	420	540	352	70	90	Tr 420x5	M 6	4	96	<b>OH 3184 H</b>	HM 3184	MS 3184-80	HMV 84 E	23184 CCK/W33, C 3184 KM	

For OH .. HE sleeves not listed in the table, please contact SKF

# Metric Sleeves d 410 - 710 mm



Dimensions										Mass	Designations	Lock	Locking	Appropriate	bearing(s)
d <sub>1</sub>	d	d <sub>3</sub>	B <sub>1</sub>	B <sub>2</sub>	B <sub>3</sub>	G	G <sub>1</sub>	A		Adapter sleeve with nut and locking device	nut	device	hydraulic nut		
mm										kg	-				
410	440	520	189	60	77	Tr 440x5	M 8	6.5	58	<b>OH 3988 H</b>	HM 3088	MS 3092-88	HMV 88 E	23988 CACK/W33	
	440	520	228	60	77	Tr 440x5	M 8	6.5	65	<b>OH 3088 H</b>	HM 3088	MS 3092-88	HMV 88 E	23088 CAK/W33	
	440	560	307	70	90	Tr 440x5	M 8	6.5	95	<b>OH 3188 H</b>	HM 3188	MS 3192-88	HMV 88 E	23188 CAK/W33	
	440	560	361	70	90	Tr 440x5	M 8	6.5	117	<b>OH 3288 H</b>	HM 3188	MS 3192-88	HMV 88 E	23288 CAK/W33	
430	460	540	189	60	77	Tr 460x5	M 8	6.5	60	<b>OH 3992 H</b>	HM 3092	MS 3092-88	HMV 92 E	23992 CAK/W33	
	460	540	234	60	77	Tr 460x5	M 8	6.5	71	<b>OH 3092 H</b>	HM 3092	MS 3092-88	HMV 92 E	23092 CAK/W33, C 3092 KM	
	460	580	326	75	95	Tr 460x5	M 8	6.5	119	<b>OH 3192 H</b>	HM 3192	MS 3192-88	HMV 92 E	23192 CAK/W33, C 3192 KM	
	460	580	382	75	95	Tr 460x5	M 8	6.5	134	<b>OH 3292 H</b>	HM 3192	MS 3192-88	HMV 92 E	23292 CAK/W33	
450	480	560	200	60	77	Tr 480x5	M 8	6.5	66	<b>OH 3996 H</b>	HM 3096	MS 30/500-96	HMV 96 E	23996 CAK/W33, C 3996 KM	
	480	560	200	60	77	Tr 480x5	M 8	6.5	66	<b>OH 3996 HE</b>	HME 3096	MS 30/500-96	HMV 96 E	C3996 KM	
	480	560	237	60	77	Tr 480x5	M 8	6.5	75	<b>OH 3096 H</b>	HM 3096	MS 30/500-96	HMV 96 E	23096 CAK/W33, C 3096 KM	
	480	620	335	75	95	Tr 480x5	M 8	6.5	135	<b>OH 3196 H</b>	HM 3196	MS 3196	HMV 96 E	23196 CAK/W33	
480	620	397	75	95	Tr 480x5	M 8	6.5	153	<b>OH 3296 H</b>	HM 3196	MS 3196	HMV 96 E	23296 CAK/W33		
470	500	580	208	68	85	Tr 500x5	M 8	6.5	74.3	<b>OH 39/500 H</b>	HM 30/500	MS 30/500-96	HMV 100 E	239/500 CAK/W33	
	500	580	208	68	85	Tr 500x5	M 8	6.5	74.3	<b>OH 39/500 HE</b>	HME 30/500	MS 30/500-96	HMV 100 E	C 39/500 KM	
	500	580	247	68	85	Tr 500x5	M 8	6.5	82	<b>OH 30/500 H</b>	HM 30/500	MS 30/500-96	HMV 100 E	230/500 CAK/W33, C 30/500 KM	
	500	630	356	80	100	Tr 500x5	M 8	6.5	145	<b>OH 31/500 H</b>	HM 31/500	MS 31/500	HMV 100 E	231/500 CAK/W33, C 31/500 KM	
	500	630	428	80	100	Tr 500x5	M 8	6	170	<b>OH 32/500 H</b>	HM 31/500	MS 31/500	HMV 100 E	232/500 CAK/W33	
500	530	630	216	68	90	Tr 530x6	M 8	6	87.9	<b>OH 39/530 H</b>	HM 30/530	MS 30/600-530	HMV 106 E	239/530 CAK/W33	
	530	630	216	68	90	Tr 530x6	M 8	6	87.9	<b>OH 39/530 HE</b>	HME 30/530	MS 30/600-530	HMV 106 E	C 39/530 KM	
	530	630	265	68	90	Tr 530x6	M 8	6	105	<b>OH 30/530 H</b>	HM 30/530	MS 30/600-530	HMV 106 E	230/530 CAK/W33, C 30/530 KM	
	530	670	364	80	105	Tr 530x6	M 8	6	161	<b>OH 31/530 H</b>	HM 31/530	MS 31/530	HMV 106 E	231/530 CAK/W33, C 31/530 KM	
	530	670	447	80	105	Tr 530x6	M 8	6	192	<b>OH 32/530 H</b>	HM 31/530	MS 31/530	HMV 106 E	232/530 CAK/W33	
530	560	650	227	75	97	Tr 560x6	M 8	6	95	<b>OH 39/560 H</b>	HM 30/560	MS 30/560	HMV 112 E	239/560 CAK/W33	
	560	650	227	75	97	Tr 560x6	M 8	6	95	<b>OH 39/560 HE</b>	HME 30/560	MS 30/560	HMV 112 E	C 39/560 KM	
	560	650	282	75	97	Tr 560x6	M 8	6	112	<b>OH 30/560 H</b>	HM 30/560	MS 30/560	HMV 112 E	230/560 CAK/W33, C 30/560 KM	
	560	710	377	85	110	Tr 560x6	M 8	6	185	<b>OH 31/560 H</b>	HM 31/560	MS 31/600-560	HMV 112 E	231/560 CAK/W33	
	560	710	462	85	110	Tr 560x6	M 8	6	219	<b>OH 32/560 H</b>	HM 31/560	MS 31/600-560	HMV 112 E	232/560 CAK/W33	
560	600	700	239	75	97	Tr 600x6	G 1/8	8	127	<b>OH 39/600 HE</b>	HME 30/600	MS 30/600-530	HMV120	C 39/600KM	
	600	700	239	75	97	Tr 600x6	G 1/8	8	127	<b>OH 39/600 H</b>	HM 30/600	MS 30/600-530	HMV 120	239/600 CAK/W33	
	600	700	289	75	97	Tr 600x6	G 1/8	8	147	<b>OH 30/600 H</b>	HM 30/600	MS 30/600-530	HMV 120	230/600 CAK/W33, C 30/600 KM	
	600	750	399	85	110	Tr 600x6	G 1/8	8	234	<b>OH 31/600 H</b>	HM 31/600	MS 31/600-560	HMV 120	231/600 CAK/W33	
	600	750	487	85	110	Tr 600x6	G 1/8	8	278	<b>OH 32/600 H</b>	HM 31/600	MS 31/600-560	HMV 120	232/600 CAK/W33	
600	630	730	254	75	97	Tr 630x6	M 8	6	124	<b>OH 39/630 H</b>	HM 30/630	MS 30/630	HMV 126 E	239/630 CAK/W33	
	630	730	254	75	97	Tr 630x6	M 8	6	124	<b>OH 39/630 HE</b>	HME 30/630	MS 30/630	HMV 126 E	C 39/630 KM	
	630	730	301	75	97	Tr 630x6	M 8	6	138	<b>OH 30/630 H</b>	HM 30/630	MS 30/630	HMV 126 E	230/630 CAK/W33, C 30/630 KM	
	630	800	424	95	120	Tr 630x6	M 8	6	254	<b>OH 31/630 H</b>	HM 31/630	MS 31/630	HMV 126 E	231/630 CAK/W33	
630	670	780	264	80	102	Tr 670x6	G 1/8	8	162	<b>OH 39/670 H</b>	HM 30/670	MS 30/670	HMV 134 E	239/670 CAK/W33, C 39/670 KM	
	670	780	324	80	102	Tr 670x6	G 1/8	8	190	<b>OH 30/670 H</b>	HM 30/670	MS 30/670	HMV 134 E	230/670 CAK/W33, C 30/670 KM	
	670	850	456	106	131	Tr 670x6	G 1/8	8	340	<b>OH 31/670 H</b>	HM 31/670	MS 31/670	HMV 134 E	231/670 CAK/W33	
	670	850	558	106	131	Tr 670x6	G 1/8	8	401	<b>OH 32/670 H</b>	HM 31/670	MS 31/670	HMV 134 E	232/670 CAK/W33	
670	710	830	286	90	112	Tr 710x7	G 1/8	8	183	<b>OH 39/710 H</b>	HM 30/710	MS 30/710	HMV 142 E	239/710 CAK/W33	
	710	830	286	90	112	Tr 710x7	G 1/8	8	183	<b>OH 39/710 HE</b>	HME 30/710	MS 30/710	HMV 142 E	C 39/710 KM	
	710	830	342	90	112	Tr 710x7	G 1/8	8	228	<b>OH 30/710 H</b>	HM 30/710	MS 30/710	HMV 142 E	230/710 CAK/W33, C 30/710 KM	
	710	900	467	106	135	Tr 710x7	G 1/8	8	392	<b>OH 31/710 H</b>	HM 31/710	MS 31/710	HMV 142 E	231/710 CAK/W33	
	710	900	572	106	135	Tr 710x7	G 1/8	8	459	<b>OH 32/710 H</b>	HM 31/710	MS 31/710	HMV 142 E	232/710 CAK/W33	
710	750	870	291	90	112	Tr 750x7	G 1/8	8	211	<b>OH 39/750 H</b>	HM 30/750	MS 30/800-750	HMV 150 E	239/750 CAK/W33	
	750	870	291	90	112	Tr 750x7	G 1/8	8	211	<b>OH 39/750 HE</b>	HME 30/750	MS 30/800-750	HMV 150 E	C 39/750 KM	
	750	870	356	90	112	Tr 750x7	G 1/8	8	246	<b>OH 30/750 H</b>	HM 30/750	MS 30/800-750	HMV 150 E	230/750 CAK/W33	
	750	950	493	112	141	Tr 750x7	G 1/8	8	451	<b>OH 31/750 H</b>	HM 31/750	MS 31/800-750	HMV 150 E	231/750 CAK/W33	
	750	950	603	112	141	Tr 750x7	G 1/8	8	526	<b>OH 32/750 H</b>	HM 31/750	MS 31/800-750	HMV 150 E	232/750 CAK/W33	

For OH .. HE sleeves not listed in the table, please contact SKF

# Metric Sleeves

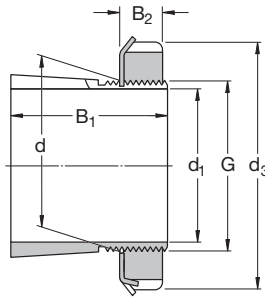
## d 750 - 1 000 mm

Dimensions										Mass	Designations Adapter sleeve with nut and locking device	Lock nut	Locking device	Appropriate hydraulic nut	bearing(s)
d <sub>1</sub>	d	d <sub>3</sub>	B <sub>1</sub>	B <sub>2</sub>	B <sub>3</sub>	G	G <sub>1</sub>	A							
mm										kg	–				
<b>750</b>	800	920	303	90	112	Tr 800x7	G 1/8	10	259	<b>OH 39/800 H</b>	HM 30/800	MS 30/800-750	HMV 160 E	239/800 CAK/W33	
	800	920	303	90	112	Tr 800x7	G 1/8	10	259	<b>OH 39/800 HE</b>	HME 30/800	MS 30/800-750	HMV 160 E	C 39/800 KM	
	800	920	366	90	112	Tr 800x7	G 1/8	10	302	<b>OH 30/800 H</b>	HM 30/800	MS 30/800-750	HMV 160 E	230/800 CAK/W33	
	800	1 000	505	112	141	Tr 800x7	G 1/8	10	535	<b>OH 31/800 H</b>	HM 31/800	MS 31/800-750	HMV 160 E	231/800 CAK/W33	
<b>800</b>	850	980	308	90	115	Tr 850x7	G 1/8	10	288	<b>OH 39/850 H</b>	HM 30/850	MS 30/900-850	HMV 170 E	239/850 CAK/W33	
	850	980	308	90	115	Tr 850x7	G 1/8	10	288	<b>OH 39/850 HE</b>	HME 30/850	MS 30/900-850	HMV 170 E	C 39/850 KM	
	850	980	380	90	115	Tr 850x7	G 1/8	10	341	<b>OH 30/850 H</b>	HM 30/850	MS 30/900-850	HMV 170 E	230/850 CAK/W33	
	850	1 060	536	118	147	Tr 850x7	G 1/8	10	616	<b>OH 31/850 H</b>	HM 31/850	MS 31/850	HMV 170 E	231/850 CAK/W33	
<b>850</b>	900	1 030	326	100	125	Tr 900x7	G 1/8	10	330	<b>OH 39/900 H</b>	HM 30/900	MS 30/900-850	HMV 180 E	239/900 CAK/W33	
	900	1 030	326	100	125	Tr 900x7	G 1/8	10	330	<b>OH 39/900 HE</b>	HME 30/900	MS 30/900-850	HMV 180 E	C 39/900 KMB	
	900	1 030	400	100	125	Tr 900x7	G 1/8	10	387	<b>OH 30/900 H</b>	HM 30/900	MS 30/900-850	HMV 180 E	230/900 CAK/W33	
	900	1 120	557	125	154	Tr 900x7	G 1/8	10	677	<b>OH 31/900 H</b>	HM 31/900	MS 31/900	HMV 180 E	231/900 CAK/W33	
<b>900</b>	950	1 080	344	100	125	Tr 950x8	G 1/8	10	363	<b>OH 39/950 H</b>	HM 30/950	MS 30/950	HMV 190 E	239/950 CAK/W33	
	950	1 080	420	100	125	Tr 950x8	G 1/8	10	424	<b>OH 30/950 H</b>	HM 30/950	MS 30/950	HMV 190 E	230/950 CAK/W33	
	950	1 170	583	125	154	Tr 950x8	G 1/8	10	738	<b>OH 31/950 H</b>	HM 31/950	MS 31/950	HMV 190 E	231/950 CAK/W33	
<b>950</b>	1 000	1 140	358	100	125	Tr 1000x8	G 1/8	10	407	<b>OH 39/1000 H</b>	HM 30/1000	MS 30/1000	HMV 200 E	239/1000 CAK/W33	
	1 000	1 140	430	100	125	Tr 1000x8	G 1/8	10	470	<b>OH 30/1000 H</b>	HM 30/1000	MS 30/1000	HMV 200 E	230/1000 CAK/W33	
	1 000	1 240	609	100	154	Tr 1000x8	G 1/8	10	842	<b>OH 31/1000 H</b>	HM 31/1000	MS 31/1000	HMV 200 E	231/1000 CAK/W33	
<b>1 000</b>	1 060	1 200	372	100	125	Tr 1060x8	G 1/8	12	490	<b>OH 39/1060 H</b>	HM 30/1060	MS 30/1000	HMV 212 E	239/1060 CAK/W33	
	1 060	1 200	447	100	125	Tr 1060x8	G 1/8	12	571	<b>OH 30/1060 H</b>	HM 30/1060	MS 30/1000	HMV 212 E	230/1060 CAK/W33	
	1 060	1 300	622	125	154	Tr 1060x8	G 1/8	12	984	<b>OH 31/1060 H</b>	HM 31/1060	MS 31/1000	HMV 212 E	231/1060 CAK/W33	

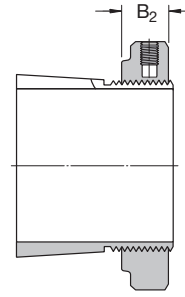
For OH .. HE sleeves not listed in the table, please contact SKF

# Inch Sleeves

d 3/4 - 17/16 in



HA, HE, HS



HA .. E, HE .. E, HS .. E

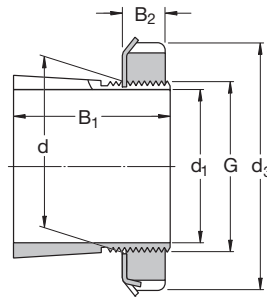
Dimensions						Mass	Designations		Locking device	Appropriate hydraulic nut	bearing(s)	
d <sub>1</sub>	d	d <sub>3</sub>	B <sub>1</sub>	B <sub>2</sub>	G		Adapter sleeve with nut and locking device	Lock nut				
in	mm					kg	–					
3/4	19.05	25	38	26	8	M 25x1.5	0.07	<b>HE 205</b>	KM 5	MB 5	-	1205 EK
		25	38	29	8	M 25x1.5	0.08	<b>HE 305</b>	KM 5	MB 5	-	2205 EK, 1305 EK
		25	38	29	10.5	M 25x1.5	0.088	<b>HE 305 E</b>	KMFE 5	-	-	C2205 K
		25	38	35	8	M 25x1.5	0.09	<b>HE 2305</b>	KM 5	MB 5	-	2305 K
7/8	22.225	30	45	27	8	M 30x1.5	0.11	<b>HS 206</b>	KM 6	MB 6	-	1206 EK
		30	45	31	8	M 30x1.5	0.12	<b>HS 306</b>	KM 6	MB 6	-	2206 EK, 1306 EK
15/16	23.813	30	45	27	8	M 30x1.5	0.1	<b>HA 206</b>	KM 6	MB 6	-	1206 EK
		30	45	31	8	M 30x1.5	0.12	<b>HA 306</b>	KM 6	MB 6	-	2206 EK
		30	45	31	10.5	M 30x1.5	0.13	<b>HA 306 E</b>	KMFE 6	-	-	C 2206 K
		30	45	38	8	M 30x1.5	0.13	<b>HA 2306</b>	KM 6	MB 6	-	2306 K
1	25.4	30	45	27	8	M 30x1.5	0.08	<b>HE 206</b>	KM 6	MB 6	-	1206 EK
		30	45	31	8	M 30x1.5	0.1	<b>HE 306</b>	KM 6	MB 6	-	2206 EK, 1306 EK
		30	45	31	10.5	M 30x1.5	0.11	<b>HE 306 E</b>	KMFE 6	-	-	C 2206 K
		30	45	38	8	M 30x1.5	0.11	<b>HE 2306</b>	KM 6	MB 6	-	2306 K
1 1/8	28.575	35	52	29	9	M 35x1.5	0.14	<b>HS 207</b>	KM 7	MB 7	-	1207 EK
		35	52	35	9	M 35x1.5	0.16	<b>HS 307</b>	KM 7	MB 7	-	2207 EK, 1307 EK, 22207 EK
		35	52	35	11.5	M 35x1.5	0.17	<b>HS 307 E</b>	KMFE 7	-	-	C 2207 K
1 3/16	30.163	35	52	29	9	M 35x1.5	0.12	<b>HA 207</b>	KM 7	MB 7	-	1207 EK
		35	52	35	9	M 35x1.5	0.14	<b>HA 307</b>	KM 7	MB 7	-	2207 EK, 1307 EK, 22207 EK
		35	52	35	11.5	M 35x1.5	0.15	<b>HA 307 E</b>	KMFE 7	-	-	C 2207 K
		35	52	43	9	M 35x1.5	0.16	<b>HA 2307</b>	KM 7	MB 7	-	2307 EK
1 1/4	31.75	40	58	31	10	M 40x1.5	0.19	<b>HE 208</b>	KM 8	MB 8	-	1208 EK
		40	58	36	10	M 40x1.5	0.22	<b>HE 308</b>	KM 8	MB 8	-	2208 EK, 1308 EK, 22208 EK, 21308 CCK
		40	58	36	13	M 40x1.5	0.19	<b>HE 308 E</b>	KMFE 8	-	-	C 2208 K
		40	58	46	10	M 40x1.5	0.28	<b>HE 2308</b>	KM 8	MB 8	-	2308 EK, 22308 EK
1 3/8	34.925	40	58	31	10	M 40x1.5	0.16	<b>HS 208</b>	KM 8	MB 8	-	1208 EK
		40	58	36	10	M 40x1.5	0.17	<b>HS 308</b>	KM 8	MB 8	-	2208 EK, 1308 EK, 22208 EK, 21308 CCK
1 7/16	36.512	45	65	33	11	M 45x1.5	0.26	<b>HA 209</b>	KM 9	MB 9	-	1209 EK
		45	65	39	11	M 45x1.5	0.29	<b>HA 309</b>	KM 9	MB 9	-	2209 EK, 1309 EK, 22209 EK, 21309 CCK
		45	65	39	13	M 45x1.5	0.31	<b>HA 309 E</b>	KMFE 9	-	-	C 2209 K
		45	65	50	11	M 45x1.5	0.35	<b>HA 2309</b>	KM 9	MB 9	-	2309 EK, 22309 EK



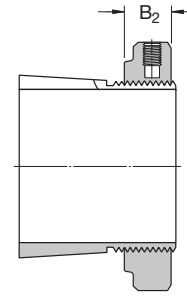
Dimensions						Mass	Designations					
d <sub>1</sub>	d	d <sub>3</sub>	B <sub>1</sub>	B <sub>2</sub>	G		Adapter sleeve with nut and locking device	Lock nut	Locking device	Appropriate hydraulic nut	bearing(s)	
in	mm					kg	–					
1 1/2	38.1	45	65	33	11	M 45x1.5	0.2	<b>HE 209</b>	KM 9	MB 9	–	1209 EK
		45	65	39	11	M 45x1.5	0.24	<b>HE 309</b>	KM 9	MB 9	–	2209 EK, 1309 EK, 22209 EK, 21309 CCK
		45	65	39	13	M 45x1.5	0.26	<b>HE 309 E</b>	KMFE 9	–	–	C 2209 K
		45	65	50	11	M 45x1.5	0.31	<b>HE 2309</b>	KM 9	MB 9	–	2309 EK, 22309 EK
1 5/8	41.275	50	70	35	12	M 50x1.5	0.31	<b>HS 210</b>	KM 10	MB 10	HMV 10 E	1210 EK
		50	70	42	12	M 50x1.5	0.36	<b>HS 310</b>	KM 10	MB 10	HMV 10 E	2210 EK, 1310 EK, 22210 EK, 21310 CCK
		50	70	55	12	M 50x1.5	0.4	<b>HS 2310</b>	KM 10	MB 10	HMV 10 E	2310 EK, 22310 EK
1 11/16	42.863	50	70	35	12	M 50x1.5	0.28	<b>HA 210</b>	KM 10	MB 10	HMV 10 E	1210 EK
		50	70	42	12	M 50x1.5	0.32	<b>HA 310</b>	KM 10	MB 10	HMV 10 E	2210 EK, 1310 EK, 22210 EK, 21310 CCK
		50	70	42	14	M 50x1.5	0.32	<b>HA 310 E</b>	KMFE 10	–	–	C 2210 K
		50	70	55	12	M 50x1.5	0.4	<b>HA 2310</b>	KM 10	MB 10	HMV 10 E	2310 EK, 22310 EK
1 3/4	44.45	50	70	35	12	M 50x1.5	0.26	<b>HE 210</b>	KM 10	MB 10	HMV 10 E	1210 EK
		50	70	42	12	M 50x1.5	0.29	<b>HE 310</b>	KM 10	MB 10	HMV 10 E	2210 EK, 1310 EK, 22210 EK, 21310 CCK
		50	70	42	14	M 50x1.5	0.29	<b>HE 310 E</b>	KMFE 10	–	–	C 2210 K
		50	70	55	12	M 50x1.5	0.36	<b>HE 2310</b>	KM 10	MB 10	HMV 10 E	2310 EK, 22310 EK
1 7/8	47.625	55	75	37	12.5	M 55x2	0.33	<b>HS 211</b>	KM 11	MB 11	HMV 11 E	1211 EK
		55	75	45	12.5	M 55x2	0.38	<b>HS 311</b>	KM 11	MB 11	HMV 11 E	2211 EK, 1311 EK, 22211 EK, 21311 CCK
1 15/16	49.213	55	75	37	12.5	M 55x2	0.3	<b>HA 211</b>	KM 11	MB 11	HMV 11 E	1211 EK
		55	75	45	12.5	M 55x2	0.34	<b>HA 311</b>	KM 11	MB 11	HMV 11 E	2211 EK, 1311 EK, 22211 EK, 21311 CCK
		55	75	45	14	M 55x2	0.35	<b>HA 311 E</b>	KMFE 11	–	–	C 2211 K
		55	75	59	12.5	M 55x2	0.42	<b>HA 2311</b>	KM 11	MB 11	HMV 11 E	2311 K, 22311 EK
2	50.8	55	75	37	12.5	W 55x1/19	0,26	<b>HE 211 B</b>	HM 11	MB 11	–	1211 EK
		55	75	45	12.5	W 55x1/19	0,29	<b>HE 311 B</b>	HM 11	MB 11	–	2211 EK, 1311 EK, 22211 EK, 21311 CCK
		55	75	45	14	W 55x1/19	0,3	<b>HE 311 BE</b>	KMFE 11 B	–	–	C 2211 K
		55	75	59	12.5	W 55x1/19	0,36	<b>HE 2311 B</b>	HM 11	MB 11	–	2311 K, 22311 EK
2 1/8	53.975	60	80	38	13	M 60x2	0.35	<b>HS 212</b>	KM 12	MB 12	HMV 12 E	1212 EK
		60	80	47	13	M 60x2	0.4	<b>HS 312</b>	KM 12	MB 12	HMV 12 E	2212 EK, 1312 EK, 22212 EK, 21312 CCK
		60	80	47	14	M 60x2	0.41	<b>HS 312 E</b>	KMFE 12	–	–	C 2212 K
		60	80	62	13	M 60x2	0.49	<b>HS 2312</b>	KM 12	MB 12	HMV 12 E	2312 K, 22312 EK

# Inch Sleeves

d 2<sup>3/16</sup> - 2<sup>11/16</sup> in



HA, HE, HS



HA .. E, HE .. E,

Dimensions						Mass	Designations		Locking device	Appropriate hydraulic nut	bearing(s)	
d <sub>1</sub>	d	d <sub>3</sub>	B <sub>1</sub>	B <sub>2</sub>	G	Adapter sleeve with nut and locking device	Lock nut					
in	mm					kg	–					
2 <sup>3/16</sup>	55.563	65	85	40	14	M 65x2	0.49	<b>HA 213</b>	KM 13	MB 13	HMV 13 E	1213 K
		65	85	50	14	M 65x2	0.58	<b>HA 313</b>	KM 13	MB 13	HMV 13 E	2213 EK, 1313 EK, 22213 EK, 21313 CCK
	65	85	50	15	M 65x2	0.59	<b>HA 313 E</b>	KMFE 13	–	HMV 13 E	C 2213 K	
		85	65	14	M 65x2	0.75	<b>HA 2313</b>	KM 13	MB 13	HMV 13 E	2313 K, 22313 EK	
2 <sup>1/4</sup>	57.15	65	85	40	14	M 65x2	0.44	<b>HE 213</b>	KM 13	MB 13	HMV 13 E	1213 EK
		65	85	50	14	M 65x2	0.52	<b>HE 313</b>	KM 13	MB 13	HMV 13 E	2213 EK, 1313 EK, 22213 EK, 21313 CCK
	65	85	50	15	M 65x2	0.53	<b>HE 313 E</b>	KMFE 13	–	HMV 13 E	C 2213 E	
		85	65	14	M 65x2	0.65	<b>HE 2313</b>	KM 13	MB 13	HMV 13 E	2313 K, 22313 EK	
2 <sup>3/8</sup>	60.325	65	85	40	14	M 65x2	0.44	<b>HS 213</b>	KM 13	MB 13	HMV 13 E	1213 EK
		65	85	50	14	M 65x2	0.71	<b>HS 313</b>	KM 13	MB 13	HMV 13 E	2213 EK, 1313 EK, 22213 EK, 21313 CCK
	65	85	65	14	M 65x2	0.8	<b>HS 2313</b>	KM 13	MB 13	HMV 13 E	2313 K, 22313 EK	
2 <sup>7/16</sup>	61.913	75	98	43	15	M 75x2	0.75	<b>HA 215</b>	KM 15	MB 15	HMV 15 E	1215 K
		75	98	55	15	M 75x2	0.91	<b>HA 315</b>	KM 15	MB 15	HMV 15 E	2215 EK, 1315 EK, 22215 EK, 21315 CCK
	75	98	55	16	M 75x2	0.93	<b>HA 315 E</b>	KMFE 15	–	HMV 15 E	C 2215 K	
		98	73	15	M 75x2	1.15	<b>HA 2315</b>	KM 15	MB 15	HMV 15 E	2315 K, 22315 EK, C 2315 K	
2 <sup>1/2</sup>	63.5	75	98	43	15	M 75x2	0.7	<b>HE 215</b>	KM 15	MB 15	HMV 15 E	1215 K
		75	98	55	15	M 75x2	0.85	<b>HE 315</b>	KM 15	MB 15	HMV 15 E	2215 K, 1315 K, 22215 EK, 21315 CCK
	75	98	55	16	M 75x2	0.87	<b>HE 315 E</b>	KMFE 15	–	HMV 15 E	C 2215 K	
		98	73	15	M 75x2	1.09	<b>HE 2315</b>	KM 15	MB 15	HMV 15 E	2315 K, 22315 EK, C 2315 K, C 2315 K	
2 <sup>5/8</sup>	66.675	75	98	43	15	M 75x2	0.7	<b>HS 215</b>	KM 15	MB 15	HMV 15 E	1215 K
		75	98	55	15	M 75x2	0.71	<b>HS 315</b>	KM 15	MB 15	HMV 15 E	2215 EK, 1315 EK, 22215 EK, 21315 CCK
	75	98	73	15	M 75x2	0.9	<b>HS 2315</b>	KM 15	MB 15	HMV 15 E	2315 K, 22315 EK, C 2315 K	
2 <sup>11/16</sup>	68.263	80	105	46	17	M 80x2	0.87	<b>HA 216</b>	KM 16	MB 16	HMV 16 E	1216 K
		80	105	59	17	M 80x2	1.05	<b>HA 316</b>	KM 16	MB 16	HMV 16 E	2216 EK, 1316 EK, 22216 EK, 21316 CCK
	80	105	59	18	M 80x2	1.06	<b>HA 316 E</b>	KMFE 16	–	HMV 16 E	C 2216 K	
		105	78	17	M 80x2	1.3	<b>HA 2316</b>	KM 16	MB 16	HMV 16 E	2316 K, 22316 K, C 2316 K	

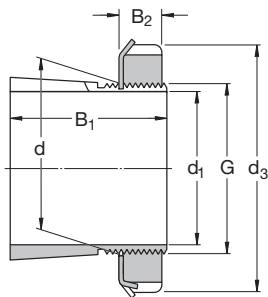
# Inch Sleeves

d 2<sup>3/4</sup> - 3<sup>1/4</sup> in

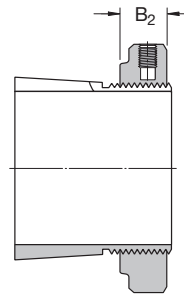
Dimensions						Mass	Designations		Locking device	Appropriate hydraulic nut	bearing(s)	
d <sub>1</sub>	d	d <sub>3</sub>	B <sub>1</sub>	B <sub>2</sub>	G	Adapter sleeve with nut and locking device	Lock nut					
in	mm					kg	–					
2 <sup>3/4</sup>	69.85	80	105	46	17	M 80x2	0.81	<b>HE 216</b>	KM 16	MB 16	HMV 16 E	1216 K
		80	105	59	17	M 80x2	0.97	<b>HE 316</b>	KM 16	MB 16	HMV 16 E	2216 EK, 1316 K, 22216 EK, 21316 CCK
	80	80	105	59	18	M 80x2	0.98	<b>HE 316 E</b>	KMFE 16	–	HMV 16 E	C 2216 K
		80	105	78	17	M 80x2	1.2	<b>HE 2316</b>	KM 16	MB 16	HMV 16 E	2316 K, 22316 EK, C 2316 K
2 <sup>15/16</sup>	74.613	85	110	50	18	M 85x2	0.94	<b>HA 217</b>	KM 17	MB 17	HMV 17 E	1217 K
		85	110	63	18	M 85x2	1.1	<b>HA 317</b>	KM 17	MB 17	HMV 17 E	2217 EK, 1317 K, 22217 EK, 21317 CCK
	85	85	110	63	19	M 85x2	1.19	<b>HA 317 E</b>	KMFE 17	–	HMV 17 E	C 2217 E
		85	110	82	18	M 85x2	1.4	<b>HA 2317</b>	KM 17	MB 17	HMV 17 E	2317 K, 22317 EK, C 2317 K
3	76.2	85	110	50	18	M 85x2	0.87	<b>HE 217</b>	KM 17	MB 17	HMV 17 E	1217 K
		85	110	63	18	M 85x2	1	<b>HE 317</b>	KM 17	MB 17	HMV 17 E	2217 K, 1317 K, 22217 EK, 21317 CCK
	85	85	110	63	19	M 85x2	0.99	<b>HE 317 E</b>	KMFE 17	–	HMV 17 E	C 2217 K
		85	110	82	18	M 85x2	1.3	<b>HE 2317</b>	KM 17	MB 17	HMV 17 E	2317 K, 22317 EK, C 2317 K
3 <sup>3/16</sup>	80.963	90	120	52	18	M 90x2	1.05	<b>HA 218</b>	KM 18	MB 18	HMV 18 E	1218 K
		90	120	65	18	M 90x2	1.25	<b>HA 318</b>	KM 18	MB 18	HMV 18 E	2218 K, 1318 K, 22218 EK, 21318 CCK
	90	90	120	65	19	M 90x2	1.26	<b>HA 318 E</b>	KMFE 18	–	HMV 18 E	C 2218 K
		90	120	86	18	M 90x2	1.5	<b>HA 2318</b>	KM 18	MB 18	HMV 18 E	2318 K, 23218-CCK/W33, 22318 EK, C 2318 K
3 <sup>1/4</sup>	82.55	90	120	52	18	M 90x2	0.97	<b>HE 218</b>	KM 18	MB 18	HMV 18 E	1218 K
		90	120	65	18	M 90x2	1.1	<b>HE 318</b>	KM 18	MB 18	HMV 18 E	2218 K, 1318 K, 22218 EK, 21318 CCK
	90	90	120	65	19	M 90x2	1.11	<b>HE 318 E</b>	KMFE 18	–	HMV 18 E	C 2218 K
		90	120	86	18	M 90x2	1.4	<b>HE 2318</b>	KM 18	MB 18	HMV 18 E	2318 K, 23218-CCK/W33, 22318 EK, C2318 K
	95	95	125	55	19	M 95x2	1.35	<b>HE 219</b>	KM 19	MB 19	HMV 19 E	1219 K
		95	125	68	19	M 95x2	1.6	<b>HE 319</b>	KM 19	MB 19	HMV 19 E	2219 K, 1319 K, 22219 EK, 21319 CCK
	95	95	125	68	20	M 95x2	1.61	<b>HE 319 E</b>	KMFE 19	–	HMV 19 E	C 2219 K
		95	125	90	19	M 95x2	2	<b>HE 2319</b>	KM 19	MB 19	HMV 19 E	2319 K, 22319 EK, C 2319 K

# Inch Sleeves

d 37/16 - 4 1/4 in



HA, HA .. L, HE, HE .. L



HA .. E, HE .. E,

Dimensions						Mass	Designations		Locking device	Appropriate hydraulic nut	bearing(s)	
d <sub>1</sub>	d	d <sub>3</sub>	B <sub>1</sub>	B <sub>2</sub>	G		Adapter sleeve with nut and locking device	Lock nut				
in	mm					kg	–					
37/16	87.313	100	130	58	20	M 100x2	1.55	<b>HA 220</b>	KM 20	MB 20	HMV 20 E	1220 K
		100	130	71	20	M 100x2	1.8	<b>HA 320</b>	KM 20	MB 20	HMV 20 E	2220 K, 1320 K, 22220 EK, 21320 CCK
		100	130	71	21	M 100x2	1.75	<b>HA 320 E</b>	KMFE 20	–	HMV 20 E	C 2220 K
		100	130	97	20	M 100x2	2.35	<b>HA 2320</b>	KM 20	MB 20	HMV 20 E	2320 K, 23220-CCK/W33, 22320 EK, C2320 K
3 1/2	88.9	100	130	58	20	M 100x2	1.45	<b>HE 220</b>	KM 20	MB 20	HMV 20 E	1220 K
		100	130	71	20	M 100x2	1.75	<b>HE 320</b>	KM 20	MB 20	HMV 20 E	2220 K, 1320 K, 22220 EK, 21320 CCK
		100	130	71	21	M 100x2	1.7	<b>HE 320 E</b>	KMFE 20	–	HMV 20 E	C 2220 K
		100	130	76	20	M 100x2	1.8	<b>HE 3120</b>	KM 20	MB 20	HMV 20 E	23120 CCK/W33
100	130	97	20	M 100x2	2.2	<b>HE 2320</b>	KM 20	MB 20	HMV 20 E	2320 K, 23220-CCK/W33, 22320 EK, C2320 K		
3 15/16	See metric sleeves for d <sub>1</sub> = 100mm											
4	101.6	110	145	63	21	M 110x2	1.65	<b>HE 222</b>	KM 22	MB 22	HMV 22 E	1222 K
		110	145	77	21	M 110x2	1.9	<b>HE 322</b>	KM 22	MB 22	HMV 22 E	2222 K, 1322 K, 23022 CCK, 22222 EK, 21322 CCK
		110	145	77	21.5	M 110x2	1.85	<b>HE 322 E</b>	KMFE 22	–	HMV 22 E	C 2222 K
		110	145	81	21	M 110x2	2.25	<b>HE 3122</b>	KM 22	MB 22	HMV 22 E	23122 CCK/W33
		110	145	105	21	M 110x2	2.4	<b>HE 2322</b>	KM 22	MB 22	HMV 22 E	2322 K, 23222-CCK/W33, 22322 EK
4 3/16	106.363	120	145	72	22	M 120x2	2.25	<b>HA 3024</b>	KML 24	MBL 24	HMV 24 E	1224 K, 23024-CCK/W33
		120	155	72	26	M 120x2	2.32	<b>HA 3024 E</b>	KMFE 24	–	HMV 24 E	C 3024 K
		120	155	88	22	M 120x2	2.9	<b>HA 3124</b>	KM 24	MB 24	HMV 24 E	2224 K, 23124-CCK/W33
		120	145	88	22	M 120x2	2.6	<b>HA 3124 L</b>	KML 24	MBL 24	HMV 24 E	C 2224 K
		120	155	112	22	M 120x2	3.6	<b>HA 2324</b>	KM 24	MB 24	HMV 24 E	23224 CCK/W33, 22324 CCK/W33
120	145	112	22	M 120x2	3.3	<b>HA 2324 L</b>	KML 24	MBL 24	HMV 24 E	C 3224 K		
4 1/4	107.95	120	145	72	22	M 120x2	2	<b>HE 3024</b>	KML 24	MBL 24	HMV 24 E	1224 K, 23024-CCK/W33, C 3024 KV
		120	155	72	26	M 120x2	2.7	<b>HE 3024 E</b>	KMFE 24	–	HMV 24 E	C 3024 K
		120	155	88	22	M 120x2	2.8	<b>HE 3124</b>	KM 24	MB 24	HMV 24 E	23124 CCK/W33, 22224 EK
		120	155	112	22	M 120x2	3.35	<b>HE 2324</b>	KM 24	MB 24	HMV 24 E	23224 CCK/W33, 22324 CCK/W33
		120	145	112	22	M 120x2	3.05	<b>HE 2324 L</b>	KML 24	MBL 24	HMV 24 E	C 3224 K

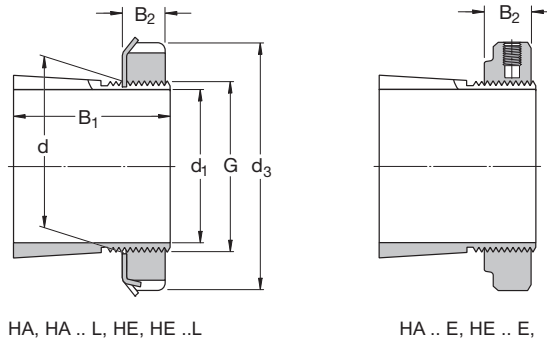
## Inch Sleeves

d 4<sup>7/16</sup> - 5<sup>1/4</sup> in

Dimensions						Mass	Designations		Locking device	Appropriate hydraulic nut	bearing(s)	
d <sub>1</sub>	d	d <sub>3</sub>	B <sub>1</sub>	B <sub>2</sub>	G	Adapter sleeve with nut and locking device	Lock nut					
in	mm					kg	–					
4 <sup>7/16</sup>	112.713	130	155	80	23	M 130x2	3.05	<b>HA 3026</b>	KML 26	MBL 26	HMV 26 E	23026 CCK/W33
		130	165	92	23	M 130x2	3.75	<b>HA 3126</b>	KM 26	MB 26	HMV 26 E	23126 CCK/W33, 22226 EK
		130	155	92	23	M 130x2	3.55	<b>HA 3126 L</b>	KML 26	MBL 26	HMV 26 E	C 2226 K
		130	165	92	28	M 130x2	3.77	<b>HA 3126 E</b>	KMFE 26	–	HMV 26 E	C 2226 K
		130	165	121	23	M 130x2	4.74	<b>HA 2326</b>	KM 26	MB 26	HMV 26 E	23226 CCK/W33, 22326 CCK/W33, C 2326 K
4 <sup>1/2</sup>	114.3	130	155	80	23	M 130x2	2.9	<b>HE 3026</b>	KML 26	MBL 26	HMV 26 E	23026 CCK/W33, C 3026 K
		130	165	92	23	M 130x2	3.6	<b>HE 3126</b>	KM 26	MB 26	HMV 26 E	23126 CCK/W33, 22226 EK
		130	155	92	23	M 130x2	3.4	<b>HE 3126 L</b>	KML 26	MBL 26	HMV 26 E	C 2226 K
		130	165	121	23	M 130x2	4.55	<b>HE 2326</b>	KM 26	MB 26	HMV 26 E	23226 CCK/W33, 22326 CCK/W33, C2326 K
4 <sup>15/16</sup>	125.413	140	165	82	24	M 140x2	3	<b>HA 3028</b>	KML 28	MBL 28	HMV 28 E	23028 CCK/W33
		140	180	97	24	M 140x2	4.1	<b>HA 3128</b>	KM 28	MB 28	HMV 28 E	23128 CCK/W33, 22228 CCK/W33
		140	165	97	24	M 140x2	4.6	<b>HA 3128 L</b>	KML 28	MBL 28	HMV 28 E	C 2228 K
		140	180	131	24	M 140x2	5.3	<b>HA 2328</b>	KM 28	MB 28	HMV 28 E	23228 CCK/W33, 22328 CCK/W33
5	127	140	165	82	24	M 140x2	2.8	<b>HE 3028</b>	KML 28	MBL 28	HMV 28 E	23028 CCK/W33
		140	180	97	24	M 140x2	3.8	<b>HE 3128</b>	KM 28	MB 28	HMV 28 E	23128 CCK/W33, 22228 CCK/W33
		140	165	97	24	M 140x2	3.3	<b>HE 3128 L</b>	KML 28	MBL 28	HMV 28 E	C 2228 K
		140	180	131	24	M 140x2	5	<b>HE 2328</b>	KM 28	MB 28	HMV 28 E	23228 CCK/W33, 22328 CCK/W33
5 <sup>3/16</sup>	131.763	150	180	87	26	M 150x2	4.2	<b>HA 3030</b>	KML 30	MBL 30	HMV 30 E	23030 CCK/W33
		150	195	111	26	M 150x2	5.8	<b>HA 3130</b>	KM 30	MB 30	HMV 30 E	23130 CCK/W33, 22230 CCK/W33
		150	180	111	26	M 150x2	5.3	<b>HA 3130 L</b>	KML 30	MBL 30	HMV 30 E	C 2230 K
		150	195	139	26	M 150x2	7.1	<b>HA 2330</b>	KM 30	MB 30	HMV 30 E	23230 CCK/W33, 22330 CCK/W33
5 <sup>1/4</sup>	133.35	150	180	87	26	M 150x2	4	<b>HE 3030</b>	KML 30	MBL 30	HMV 30 E	23030 CCK/W33
		150	195	111	26	M 150x2	5.5	<b>HE 3130</b>	KM 30	MB 30	HMV 30 E	23130 CCK/W33, 22230 CCK/W33
		150	180	111	26	M 150x2	5	<b>HE 3130 L</b>	KML 30	MBL 30	HMV 30 E	C 2230 K
		150	195	139	26	M 150x2	6.8	<b>HE 2330</b>	KM 30	MB 30	HMV 30 E	23230 CCK/W33, 22330 CCK/W33

# Inch Sleeves

d 5/16 - 6 1/2 in



Dimensions						Mass	Designations		Locking device	Appropriate hydraulic nut	bearing(s)	
d <sub>1</sub>	d	d <sub>3</sub>	B <sub>1</sub>	B <sub>2</sub>	G	Adapter sleeve with nut and locking device	Lock nut					
in	mm					kg	–					
5/16	138.113	160	190	93	27.5	M 160x3	5.4	<b>HA 3032</b>	KML 32	MBL 32	HMV 32 E	23032 CCK/W33
			210	119	27.5	M 160x3	7.55	<b>HA 3132</b>	KM 32	MB 32	HMV 32 E	23132 CCK/W33, 22232 CCK/W33
		160	210	147	27.5	M 160x3	9.4	<b>HA 2332</b>	KM 32	MB 32	HMV 32 E	23232 CCK/W33, 22332 CCK/W33
			190	147	27.5	M 160x3	8.55	<b>HA 2332 L</b>	KML 32	MBL 32	HMV 32 E	C 3232 K
5/2	139.7	160	190	93	27.5	M 160x3	5.1	<b>HE 3032</b>	KML 32	MBL 32	HMV 32 E	23032 CCK/W33
			210	119	27.5	M 160x3	7.3	<b>HE 3132</b>	KM 32	MB 32	HMV 32 E	23132 CCK/W33, 22232 CCK/W33
		160	190	119	27.5	M 160x3	6.45	<b>HE 3132 L</b>	KML 32	MBL 32	HMV 32 E	C 3132 K
			210	147	27.5	M 160x3	8.8	<b>HE 2332</b>	KM 32	MB 32	HMV 32 E	23232 CCK/W33, 22332 CCK/W33
5 15/16	150.813	170	200	101	28.5	M 170x3	5.7	<b>HA 3034</b>	KML 34	MBL 34	HMV 34 E	23034 CCK/W33, C 3034 K
			220	122	28.5	M 170x3	7.8	<b>HA 3134</b>	KM 34	MB 34	HMV 34 E	23134 CCK/W33, 22234 CCK/W33
		170	200	122	28.5	M 170x3	6.8	<b>HA 3134 L</b>	KML 34	MBL 34	HMV 34 E	C 2234 K
			220	154	28.5	M 170x3	9.6	<b>HA 2334</b>	KM 34	MB 34	HMV 34 E	23234 CCK/W33, 22334 CCK/W33
6	152.4	170	200	101	28.5	M 170x3	5.4	<b>HE 3034</b>	KML 34	MBL 34	HMV 34 E	23034 CCK/W33, C 3034 K
			220	122	28.5	M 170x3	7.55	<b>HE 3134</b>	KM 34	MB 34	HMV 34 E	23134 CCK/W33, 22234 CCK/W33
		170	200	122	28.5	M 170x3	6.6	<b>HE 3134 L</b>	KML 34	MBL 34	HMV 34 E	C 2234 K
			220	154	28.5	M 170x3	9.2	<b>HE 2334</b>	KM 34	MB 34	HMV 34 E	23234 CCK/W33, 22334 CCK/W33
6 7/16	163.513	180	210	109	29.5	M 180x3	6	<b>HA 3036</b>	KML 36	MBL 36	HMV 36 E	23036 CCK/W33, C 3036 K
			230	131	29.5	M 180x3	8.15	<b>HA 3136</b>	KM 36	MB 36	HMV 36 E	23136 CCK/W33, 22236 CCK/W33
		180	210	131	29.5	M 180x3	7.2	<b>HA 3136 L</b>	KML 36	MBL 36	HMV 36 E	C 3136 K
			230	161	29.5	M 180x3	9.9	<b>HA 2336</b>	KM 36	MB 36	HMV 36 E	23236 CCK/W33, 22336 CCK/W33, C 3236 K
6 1/2	165.1	180	210	109	29.5	M 180x3	5.55	<b>HE 3036</b>	KML 36	MBL 36	HMV 36 E	23036 CCK/W33, C 3036 K
			230	131	29.5	M 180x3	7.8	<b>HE 3136</b>	KM 36	MB 36	HMV 36 E	23136 CCK/W33, 22236 CCK/W33
		180	210	131	29.5	M 180x3	6.85	<b>HE 3136 L</b>	KML 36	MBL 36	HMV 36 E	C 3136 K
			230	161	29.5	M 180x3	9.35	<b>HE 2336</b>	KM 36	MB 36	HMV 36 E	23236 CCK/W33, 22336 CCK/W33, C 3236 K

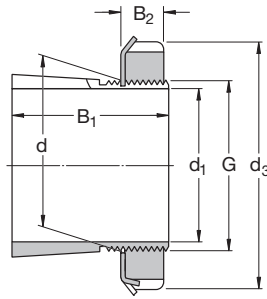
## Inch Sleeves

d 6<sup>3/4</sup> - 7<sup>3/16</sup> in

Dimensions						Mass	Designations		Locking device	Appropriate hydraulic nut	bearing(s)	
d <sub>1</sub>	d	d <sub>3</sub>	B <sub>1</sub>	B <sub>2</sub>	G	Adapter sleeve with nut and locking device	Lock nut					
in	mm					kg	–					
6 <sup>3/4</sup>	171.45	190	220	112	30.5	M 190x3	7.2	<b>HE 3038</b>	KML 38	MBL 38	HMV 38 E	23038 CCK/W33, C3038 K
		190	240	141	30.5	M 190x3	10.2	<b>HE 3138</b>	KM 38	MB 38	HMV 38 E	23138 CCK/W33, 22238 CCK/W33
		190	240	169	30.5	M 190x3	11.7	<b>HE 2338</b>	KM 38	MB 38	HMV 38 E	23238 CCK/W33, 22338 CCK/W33
6 <sup>15/16</sup>	176.213	190	220	112	30.5	M 190x3	5.8	<b>HA 3038</b>	KML 38	MBL 38	HMV 38 E	23038 CCK/W33, C 3038 K
		190	240	141	30.5	M 190x3	8.5	<b>HA 3138</b>	KM 38	MB 38	HMV 38 E	23138 CCK/W33, 22238 CCK/W33
		190	240	169	30.5	M 190x3	10	<b>HA 2338</b>	KM 38	MB 38	HMV 38 E	23238 CCK/W33, 22338 CCK/W33
7	177.8	200	240	120	31.5	M 200x3	9.35	<b>HE 3040</b>	KML 40	MBL 40	HMV 40 E	23040 CCK/W33, C 3040 K
		200	250	150	31.5	M 200x3	12.3	<b>HE 3140</b>	KM 40	MB 40	HMV 40 E	23140 CCK/W33, 22240 CCK/W33, C 3140 K
		200	250	176	31.5	M 200x3	14.2	<b>HE 2340</b>	KM 40	MB 40	HMV 40 E	23240 CCK/W33, 22340 CCK/W33
7 <sup>3/16</sup>	182.563	200	240	120	31.5	M 200x3	8.25	<b>HA 3040</b>	KML 40	MBL 40	HMV 40 E	23040 CCK/W33, C 3040 K
		200	250	150	31.5	M 200x3	11.2	<b>HA 3140</b>	KM 40	MB 40	HMV 40 E	23140 CCK/W33, 22240 CCK/W33, C 3140 K

## Adapter sleeves with inch dimensions

d  $\frac{3}{4}$  -  $\frac{21}{16}$  in



Dimensions							Mass	Designation	Locknut	Wshr.	Appropriate bearings
d <sub>1</sub>	d	d <sub>3</sub>	B <sub>1</sub>	B <sub>2</sub>	G nom.	T.P.I.					
in.	mm	in.					kg				
$\frac{3}{4}$	25	$\frac{19}{16}$	1.269	0.456	0.969	32	0.10	<b>SNW 5 x <math>\frac{3}{4}</math></b>	N05	W05	1205 EK
$\frac{15}{16}$	30	$\frac{13}{4}$	1.353	0.456	1.173	18	0.10	<b>SNW 6 x <math>\frac{15}{16}</math></b>	N06	W06	1206 EK, 1306 EK
1	30	$\frac{13}{4}$	1.353	0.456	1.173	18	0.10	<b>SNW 6 x 1</b>	N06	W06	1206 EK, 1306 EK
$\frac{11}{8}$	35	$\frac{21}{16}$	1.459	0.487	1.376	18	0.16	<b>SNW 7 x <math>\frac{11}{8}</math></b>	N07	W 07	1207 EK, 1307 EK, 22207 EK
$\frac{13}{16}$	35	$\frac{21}{16}$	1.459	0.487	1.376	18	0.16	<b>SNW 7 x <math>\frac{13}{16}</math></b>	N07	W07	1207 EK, 1307 EK, 22207 EK
$\frac{11}{4}$	35	$\frac{21}{16}$	1.459	0.487	1.376	18	0.16	<b>SNW 7 x <math>\frac{11}{4}</math></b>	N07	W07	1207 EK, 1307 EK, 22207 EK
	40	$\frac{21}{4}$	1.504	0.495	1.563	18	0.19	<b>SNW 8 x <math>\frac{11}{4}</math></b>	N08	W08	1208 EK, 1308 EK, 22208 EK
$\frac{13}{8}$	40	$\frac{21}{4}$	1.504	0.495	1.563	18	0.19	<b>SNW 8 x <math>\frac{13}{8}</math></b>	N08	W08	1208 EK, 1308 EK, 22208 EK
	45	$\frac{217}{32}$	1.584	0.495	1.767	18	0.28	<b>SNW 9 x <math>\frac{13}{8}</math></b>	N09	W09	1209 EK, 1309 EK, 22209 EK, 21309 EK
$\frac{15}{16}$	40	$\frac{21}{4}$	1.504	0.495	1.563	18	0.19	<b>SNW 8 x <math>\frac{15}{16}</math></b>	N08	W08	1208 EK, 1308 EK, 22208 EK
	45	$\frac{217}{32}$	1.584	0.495	1.767	18	0.28	<b>SNW 9 x <math>\frac{15}{16}</math></b>	N09	W09	1209 EK, 1309 EK, 22209 EK, 21309 EK
$\frac{17}{16}$	45	$\frac{217}{32}$	1.584	0.495	1.767	18	0.28	<b>SNW 9 x <math>\frac{17}{16}</math></b>	N09	W09	1209 EK, 1309 EK, 22209 EK, 21309 EK
	45	$\frac{217}{32}$	2.133	0.495	1.767	18	0.32	<b>SNW 109 x <math>\frac{17}{16}</math></b>	N09	W09	2309 EK, 22309 EK
$\frac{11}{2}$	45	$\frac{217}{32}$	2.133	0.495	1.767	18	0.32	<b>SNW 109 x <math>\frac{11}{2}</math></b>	N09	W09	2309 EK, 22309 EK
$\frac{15}{8}$	50	$\frac{211}{16}$	1.765	0.558	1.967	18	0.33	<b>SNW 10 x <math>\frac{15}{8}</math></b>	N10	W10	1210 EK, 1310 EK, 22210 EK, 21310 CCK
$\frac{111}{16}$	50	$\frac{211}{16}$	1.765	0.558	1.967	18	0.33	<b>SNW 10 x <math>\frac{111}{16}</math></b>	N10	W10	1210 EK, 1310 EK, 22210 EK, 21310 CCK
	50	$\frac{211}{16}$	2.394	0.558	1.967	18	0.39	<b>SNW 110 x <math>\frac{111}{16}</math></b>	N10	W10	2310 EK, 22310 EK
$\frac{13}{4}$	50	$\frac{211}{16}$	1.765	0.558	1.967	18	0.33	<b>SNW 10 x <math>\frac{13}{4}</math></b>	N10	W10	1210 EK, 1310 EK, 22210 EK, 21310 CCK
	55	$\frac{231}{32}$	1.845	0.563	2.157	18	0.36	<b>SNW 11 x <math>\frac{13}{4}</math></b>	N11	W11	1211 EK, 1311 EK, 22211 EK, 21311 EK
$\frac{113}{16}$	55	$\frac{231}{32}$	1.845	0.563	2.157	18	0.36	<b>SNW 11 x <math>\frac{113}{16}</math></b>	N11	W11	1211 EK, 1311 EK, 22211 EK, 21311 EK
$\frac{17}{8}$	55	$\frac{231}{32}$	1.845	0.563	2.157	18	0.36	<b>SNW 11 x <math>\frac{17}{8}</math></b>	N11	W11	1211 EK, 1311 EK, 22211 EK, 21311 EK
$\frac{115}{16}$	55	$\frac{231}{32}$	1.845	0.563	2.157	18	0.36	<b>SNW 11 x <math>\frac{115}{16}</math></b>	N11	W11	1211 EK, 1311 EK, 22211 EK, 21311 EK
	55	$\frac{231}{32}$	2.516	0.563	2.157	18	0.43	<b>SNW 111 x <math>\frac{115}{16}</math></b>	N11	W11	2311 K, 22311 EK
2	55	$\frac{231}{32}$	1.845	0.563	2.157	18	0.36	<b>SNW 11 x 2</b>	N11	W11	1211 EK, 1311 EK, 22211 EK, 21311 EK
	55	$\frac{231}{32}$	2.516	0.563	2.157	18	0.43	<b>SNW 111 x 2</b>	N11	W11	2311 K, 22311 EK
	65	$\frac{3}{8}$	2.100	0.625	2.548	18	0.64	<b>SNW 13 x 2</b>	N13	W13	1213 EK, 1313 EK, 22213 EK
$\frac{21}{16}$	60	$\frac{35}{32}$	2.659	0.594	2.360	18	0.73	<b>SNW 112 x <math>\frac{21}{16}</math></b>	N12	W12	2312 K, 22312 EK

\* For air handling units, H sleeves should be used.

Threads: American National Form NS Class 3



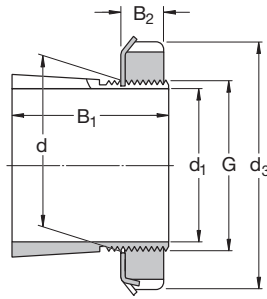
# Adapter sleeves with inch dimensions

d 2<sup>3/16</sup> - 3<sup>15/16</sup> in

Dimensions								Mass	Designation	Locknut	Washer	Appropriate hydraulic nut	Appropriate bearings
d <sub>1</sub>	d	d <sub>3</sub>	B <sub>1</sub>	B <sub>2</sub>	G nom.	T.P.I.							
in.	mm	in.					kg						
2 <sup>3/16</sup>	65	3 <sup>3/8</sup>	2.100	0.625	2.548	18	0.64	SNW 13 x 2 <sup>3/16</sup>	N13	W13			1213 EK, 1313EK, 22213 EK,
	65	3 <sup>3/8</sup>	2.771	0.625	2.548	18	0.79	SNW 113 x 2 <sup>3/16</sup>	N13	W13			2313 K, 22313 EK
2 <sup>1/4</sup>	65	3 <sup>3/8</sup>	2.100	0.625	2.548	18	0.64	SNW 13 x 2 <sup>1/4</sup>	N13	W13			1213 EK, 1313 EK, 22213 EK
	65	3 <sup>3/8</sup>	2.771	0.625	2.548	18	0.79	SNW 113 x 2 <sup>1/4</sup>	N13	W13			2313 K, 22313 EK
2 <sup>5/16</sup>	65	3 <sup>3/8</sup>	2.100	0.625	2.548	18	0.64	SNW 13 x 2 <sup>5/16</sup>	N13	W13			1213 EK, 1313EK, 22213 EK,
2 <sup>3/8</sup>	75	3 <sup>7/8</sup>	2.296	0.665	2.933	12	1.00	SNW 15 x 2 <sup>3/8</sup>	AN15	W15			1215 K, 1315 K, 22215 EK
	75	3 <sup>7/8</sup>	2.296	0.665	2.933	12	1.00	SNW 15 x 2 <sup>7/16</sup>	AN15	W15			1215 K, 1315 K, 22215 EK
2 <sup>7/16</sup>	75	3 <sup>7/8</sup>	2.296	0.665	2.933	12	1.00	SNW 15 x 2 <sup>7/16</sup>	AN15	W15			2315 K, 22315 EK
	75	3 <sup>7/8</sup>	3.084	0.665	2.933	12	1.35	SNW 115 x 2 <sup>7/16</sup>	AN15	W15			
2 <sup>11/16</sup>	80	4 <sup>5/32</sup>	2.376	0.665	3.137	12	1.10	SNW 16 x 2 <sup>11/16</sup>	AN16	W16			1216 K, 1316 K, 22216 EK
	80	4 <sup>5/32</sup>	3.204	0.665	3.137	12	1.45	SNW 116 x 2 <sup>11/16</sup>	AN16	W16			2316 K, 22316 EK
2 <sup>3/4</sup>	80	4 <sup>5/32</sup>	2.376	0.665	3.137	12	1.10	SNW 16 x 2 <sup>3/4</sup>	AN16	W16			1216 K, 1316 K, 22216 EK
2 <sup>15/16</sup>	85	4 <sup>13/32</sup>	2.486	0.697	3.340	12	1.30	SNW 17 x 2 <sup>15/16</sup>	AN17	W17			1217 K, 1317 K, 22217 EK
	85	4 <sup>13/32</sup>	3.312	0.697	3.340	12	1.55	SNW 117 x 2 <sup>15/16</sup>	AN17	W17			2317 K, 22317 EK
3	85	4 <sup>13/32</sup>	2.486	0.697	3.340	12	1.30	SNW 17 x 3	AN17	W17			1217 K, 1317 K, 22217 EK
	85	4 <sup>13/32</sup>	3.312	0.697	3.340	12	1.55	SNW 117 x 3	AN17	W17			2317 K, 22317 EK
3 <sup>3/16</sup>	90	4 <sup>21/32</sup>	2.646	0.782	3.527	12	1.40	SNW 18 x 3 <sup>3/16</sup>	AN18	W18	HMVC 18		1218 K, 1318 K, 22218 EK
	90	4 <sup>21/32</sup>	3.553	0.782	3.527	12	1.80	SNW 118 x 3 <sup>3/16</sup>	AN18	W18	HMVC 18		2318 K, 23218 CCK/W33, 22318 EK
3 <sup>1/4</sup>	90	4 <sup>21/32</sup>	2.646	0.782	3.527	12	1.40	SNW 18 x 3 <sup>1/4</sup>	AN18	W18	HMVC 18		1218 K, 1318 K, 22218 EK
3 <sup>5/16</sup>	95	4 <sup>15/16</sup>	2.760	0.813	3.730	12	1.85	SNW 19 x 3 <sup>5/16</sup>	AN19	W19	HMVC19		1219 K, 1319 K, 22219 EK
	95	4 <sup>15/16</sup>	3.702	0.813	3.730	12	2.20	SNW 119 x 3 <sup>5/16</sup>	AN19	W19	HMVC19		23219 CCK/W33, 22319 EK
3 <sup>7/16</sup>	100	5 <sup>3/16</sup>	2.869	0.844	3.918	12	2.00	SNW 20 x 3 <sup>7/16</sup>	AN20	W20	HMVC20		1220 K, 1320 K, 22220 EK
	100	5 <sup>3/16</sup>	3.971	0.844	3.918	12	2.85	SNW 120 x 3 <sup>7/16</sup>	AN20	W20	HMVC20		23220 CCK/W33, 22320EK
3 <sup>1/2</sup>	100	5 <sup>3/16</sup>	2.869	0.844	3.918	12	2.00	SNW 20 x 3 <sup>1/2</sup>	AN20	W20	HMVC20		1220 K, 1320 K, 22220 EK
	100	5 <sup>3/16</sup>	3.971	0.844	3.918	12	2.85	SNW 120 x 3 <sup>1/2</sup>	AN20	W20	HMVC20		23220 CCK/W33, 22320EK
3 <sup>11/16</sup>	105	5 <sup>7/16</sup>	2.987	0.844	4.122	12	2.05	SNW 21 x 3 <sup>11/16</sup>	AN21	W21			1321 K
	110	5 <sup>23/32</sup>	3.206	0.906	4.325	12	2.25	SNW 22 x 3 <sup>11/16</sup>	AN22	W22	HMVC22		1222 K, 1322 K, 22222 EK
3 <sup>15/16</sup>	110	5 <sup>23/32</sup>	3.206	0.906	4.325	12	2.25	SNW 22 x 3 <sup>15/16</sup>	AN22	W22	HMVC22		1222 K, 1322 K, 22222 EK
	110	5 <sup>23/32</sup>	4.348	0.906	4.325	12	2.95	SNW 122 x 3 <sup>15/16</sup>	AN22	W22	HMVC22		23222 CCK/W33, 22322 EK

## Adapter sleeves with inch dimensions

d 4 - 5<sup>3/4</sup> in



Dimensions							Mass	Designation	Locknut	Washer	Appropriate hydraulic nut	Appropriate bearings
d <sub>1</sub>	d	d <sub>3</sub>	B <sub>1</sub>	B <sub>2</sub>	G nom.	T.P.I.	kg					
in.	mm	in.										
4	110	5 <sup>23/32</sup>	3.206	0.906	4.325	12	2.25	<b>SNW 22 x 4</b>	AN22	W22	HMVC 22	1222K, 1322K, 22222EK
4 <sup>3/16</sup>	120	5 <sup>11/16</sup>	2.947	0.938	4.716	12	2.80	<b>SNW 3024 x 4<sup>3/16</sup></b>	N024	W024	HMVC 24	23024 CCK/W33
		5 <sup>11/16</sup>	3.466	0.938	4.716	12	2.65	<b>SNW 3124 x 4<sup>3/16</sup></b>	NO24	W024	HMVC 24	23124 CCK/W33
		6 <sup>1/8</sup>	3.466	0.938	4.716	12	3.00	<b>SNW 24 x 4<sup>3/16</sup></b>	AN24	W24	HMVC 24	22224 EK
		6 <sup>1/8</sup>	4.648	0.938	4.716	12	3.55	<b>SNW 124 x 4<sup>3/16</sup></b>	AN24	W24	HMVC 24	23224 CCK/W33, 22324 CCK/W33
4 <sup>1/4</sup>	120	5 <sup>11/16</sup>	3.466	0.938	4.716	12	2.65	<b>SNW 3124 x 4<sup>1/4</sup></b>	N024	W024	HMVC 24	23124 CCK/W33
		6 <sup>1/8</sup>	3.466	0.938	4.716	12	3.00	<b>SNW 24 x 4<sup>1/4</sup></b>	AN24	W24	HMVC 24	22224 EK
4 <sup>7/16</sup>	130	6 <sup>1/8</sup>	3.237	1.00	5.106	12	3.40	<b>SNW 3026 x 4<sup>7/16</sup></b>	N026	W026	HMVC 26	23026 CCK/W33
		6 <sup>1/8</sup>	3.762	1.00	5.106	12	3.80	<b>SNW 3126 x 4<sup>7/16</sup></b>	N026	W026	HMVC 26	23126 CCK/W33
		6 <sup>3/4</sup>	3.762	1.00	5.106	12	4.40	<b>SNW 26 x 4<sup>7/16</sup></b>	AN26	W26	HMVC 26	22226 EK
		6 <sup>3/4</sup>	4.982	1.00	5.106	12	5.65	<b>SNW 126 x 4<sup>7/16</sup></b>	AN26	W26	HMVC 26	23226 CCK/W33, 22326 CCK/W33
4 <sup>1/2</sup>	130	6 <sup>1/8</sup>	3.237	1.00	5.106	12	3.40	<b>SNW 3026 x 4<sup>1/2</sup></b>	N026	W026	HMVC 26	23026 CCK/W33
		6 <sup>1/8</sup>	3.762	1.00	5.106	12	3.80	<b>SNW 3126 x 4<sup>1/2</sup></b>	N026	W026	HMVC 26	23126CCK/W33
		6 <sup>3/4</sup>	3.762	1.00	5.106	12	4.40	<b>SNW 26 x 4<sup>1/2</sup></b>	AN26	W26	HMVC 26	22226 EK
4 <sup>15/16</sup>	140	6 <sup>1/2</sup>	3.340	1.063	5.497	12	3.80	<b>SNW 3028 x 4<sup>15/16</sup></b>	N028	W028	HMVC 28	23028 CCK/W33
		6 <sup>1/2</sup>	3.981	1.063	5.497	12	4.00	<b>SNW 3128 x 4<sup>15/16</sup></b>	N028	W028	HMVC 28	23128 CCK/W33
		7 <sup>3/32</sup>	3.981	1.063	5.497	12	4.75	<b>SNW 28 x 4<sup>15/16</sup></b>	AN28	W28	HMVC 28	22228 CCK/W33
		7 <sup>3/32</sup>	5.323	1.063	5.497	12	5.90	<b>SNW 128 x 4<sup>15/16</sup></b>	AN28	W28	HMVC 28	23228 CCK/W33, 22328 CCK/W33
5	140	6 <sup>1/2</sup>	3.340	1.063	5.497	12	3.85	<b>SNW 3028 x 5</b>	N028	W028	HMVC 28	23028 CCK/W33
		6 <sup>1/2</sup>	3.981	1.063	5.497	12	4.00	<b>SNW 3128 x 5</b>	N028	W028	HMVC 28	23128 CCK/W33
		7 <sup>3/32</sup>	3.981	1.063	5.497	12	4.75	<b>SNW 28 x 5</b>	AN28	W28	HMVC 28	22228CCK/W33
5 <sup>3/16</sup>	150	7 <sup>1/8</sup>	3.492	1.094	5.888	12	4.45	<b>SNW 3030 x 5<sup>3/16</sup></b>	N030	W030	HMVC 30	23030 CCK/W33
		7 <sup>1/8</sup>	4.241	1.094	5.888	12	6.20	<b>SNW 3130 x 5<sup>3/16</sup></b>	N030	W030	HMVC 30	23130 CCK/W33
		7 <sup>11/16</sup>	4.241	1.125	5.888	12	7.25	<b>SNW 30 x 5<sup>3/16</sup></b>	AN30	W30	HMVC 30	22230 CCK/W33
		7 <sup>11/16</sup>	5.621	1.125	5.888	12	8.15	<b>SNW 130 x 5<sup>3/16</sup></b>	AN30	W30	HMVC 30	23230 CCK/W33, 22330 CCK/W33
5 <sup>1/4</sup>	150	7 <sup>11/16</sup>	4.241	1.125	5.888	12	7.25	<b>SNW 30 x 5<sup>1/4</sup></b>	AN30	W30	HMVC 30	22230 CCK/W33
5 <sup>7/16</sup>	160	7 <sup>1/2</sup>	3.711	1.156	6.284	8	5.45	<b>SNW 3032 x 5<sup>7/16</sup></b>	N032	W032	HMVC 32	23032 CCK/W33
		7 <sup>1/2</sup>	4.578	1.156	6.284	8	6.10	<b>SNW 3132 x 5<sup>7/16</sup></b>	N032	W032	HMVC 32	23132 CCK/W33
		8 <sup>1/16</sup>	4.578	1.187	6.284	8	7.05	<b>SNW 32 x 5<sup>7/16</sup></b>	AN32	W32	HMVC 32	22232 CCK/W33
		8 <sup>1/16</sup>	5.920	1.187	6.284	8	8.15	<b>SNW 132 x 5<sup>7/16</sup></b>	AN32	W32	HMVC 32	23232 CCK/W33, 22332CCK/W33
5 <sup>3/4</sup>	160	8 <sup>1/16</sup>	4.578	1.187	6.284	8	7.05	<b>SNW 32 x 5<sup>3/4</sup></b>	AN32	W32	HMVC 32	22232 CCK/W33

Threads: American National Form NS Class 3

## Adapter sleeves with inch dimensions

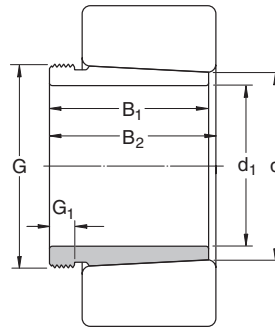
d 5<sup>15/16</sup> - 8 in

Dimensions								Mass	Designation	Locknut	Washer	Appropriate hydraulic nut	Appropriate bearings
d1	d	d3	B1	B2	G nom.		T.P.I.						
in.	mm	in.						kg					
5 <sup>15/16</sup>	170	7 <sup>7/8</sup>	4.019	1.188	6.659	8	6.10	<b>SNW 3034 x 5<sup>15/16</sup></b>	N034	W034	HMVC 34	23034 CCK/W33	
		7 <sup>7/8</sup>	4.847	1.188	6.659	8	7.30	<b>SNW 3134 x 5<sup>15/16</sup></b>	N034	W034	HMVC 34	23134 CCK/W33	
		8 <sup>21/32</sup>	4.847	1.219	6.659	8	8.85	<b>SNW 34 x 5<sup>15/16</sup></b>	AN34	W34	HMVC 34	22234 CCK/W33	
		8 <sup>21/32</sup>	6.188	1.219	6.659	8	9.55	<b>SNW 134 x 5<sup>15/16</sup></b>	AN34	W34	HMVC 34	23234 CCK/W33, 22334 CCK/W33	
6	170	7 <sup>7/8</sup>	4.019	1.188	6.659	8	6.10	<b>SNW 3034 x 6</b>	N034	W034	HMVC 34	23034 CCK/W33	
		7 <sup>7/8</sup>	4.847	1.188	6.659	8	7.30	<b>SNW 3134 x 6</b>	N034	W034	HMVC 34	23134 CCK/W33	
		8 <sup>21/32</sup>	4.847	1.219	6.659	8	8.85	<b>SNW 34 x 6</b>	AN34	W34	HMVC 34	22234 CCK/W33	
		8 <sup>21/32</sup>	6.188	1.219	6.659	8	9.55	<b>SNW 134 x 6</b>	AN34	W34	HMVC 34	23234 CCK/W33, 22334 CCK/W33	
6 <sup>7/16</sup>	180	8 <sup>1/4</sup>	4.337	1.219	7.066	8	6.80	<b>SNW 3036 x 6<sup>7/16</sup></b>	N036	W036	HMVC 36	23036 CCK/W33	
		8 <sup>1/4</sup>	5.038	1.219	7.066	8	7.75	<b>SNW 3136 x 6<sup>7/16</sup></b>	N036	W036	HMVC 36	23136 CCK/W33	
		9 <sup>1/16</sup>	5.038	1.250	7.066	8	9.30	<b>SNW 36 x 6<sup>7/16</sup></b>	AN36	W36	HMVC 36	22236 CCK/W33	
		9 <sup>1/16</sup>	6.456	1.250	7.066	8	10.0	<b>SNW 136 x 6<sup>7/16</sup></b>	AN36	W36	HMVC 36	23236 CCK/W33, 22336 CCK/W33	
6 <sup>1/2</sup>	180	8 <sup>1/4</sup>	5.038	1.219	7.066	8	7.75	<b>SNW 3136 x 6<sup>1/2</sup></b>	N036	W036	HMVC 36	23136 CCK/W33	
		9 <sup>1/16</sup>	5.038	1.250	7.066	8	9.30	<b>SNW 36 x 6<sup>1/2</sup></b>	AN36	W36	HMVC 36	22236 CCK/W33	
6 <sup>15/16</sup>	190	8 <sup>11/16</sup>	4.412	1.250	7.472	8	7.50	<b>SNW 3038 x 6<sup>15/16</sup></b>	N038	W038	HMVC 38	23038 CCK/W33	
		8 <sup>11/16</sup>	5.261	1.250	7.472	8	8.95	<b>SNW 3138 x 6<sup>15/16</sup></b>	N038	W038	HMVC 38	23138 CCK/W33	
		9 <sup>15/32</sup>	5.261	1.281	7.472	8	10.5	<b>SNW 38 x 6<sup>15/16</sup></b>	AN38	W38	HMVC 38	22238 CCK/W33	
		9 <sup>15/32</sup>	6.758	1.281	7.472	8	12.5	<b>SNW 138 x 6<sup>15/16</sup></b>	AN38	W38	HMVC 38	23238 CCK/W33, 22338 CCK/W33	
7	190	8 <sup>11/16</sup>	4.412	1.250	7.472	8	7.50	<b>SNW 3038 x 7</b>	N038	W038	HMVC 38	23038 CCK/W33	
		8 <sup>11/16</sup>	5.261	1.250	7.472	8	8.95	<b>SNW 3138 x 7</b>	N038	W038	HMVC 38	23138 CCK/W33	
		9 <sup>15/32</sup>	5.261	1.281	7.472	8	10.5	<b>SNW 38 x 7</b>	AN38	W38	HMVC 38	22238 CCK/W33	
		9 <sup>15/32</sup>	6.758	1.281	7.472	8	12.5	<b>SNW 138 x 7</b>	AN38	W38	HMVC 38	23238 CCK/W33, 22338 CCK/W33	
7 <sup>3/16</sup>	200	9 <sup>7/16</sup>	4.750	1.313	7.847	8	8.85	<b>SNW 3040 x 7<sup>3/16</sup></b>	N040	W040	HMVC 40	23040 CCK/W33	
		9 <sup>7/16</sup>	5.484	1.313	7.847	8	12.9	<b>SNW 3140 x 7<sup>3/16</sup></b>	N040	W040	HMVC 40	23140 CCK/W33	
		9 <sup>27/32</sup>	5.484	1.344	7.847	8	14.0	<b>SNW 40 x 7<sup>3/16</sup></b>	AN40	W40	HMVC 40	22240 CCK/W33	
		9 <sup>27/32</sup>	7.095	1.344	7.847	8	16.0	<b>SNW 140 x 7<sup>3/16</sup></b>	AN40	W40	HMVC 40	23240 CCK/W33, 22340 CCK/W33	
7 <sup>15/16</sup>	220	10 <sup>1/4</sup>	5.130	1.375	8.628	8	11.0	<b>SNW 3044 x 7<sup>15/16</sup></b>	N044	W044	HMVC 44	23044 CCK/W33	
		10 <sup>1/4</sup>	5.901	1.375	8.628	8	12.8	<b>SNW 3144 x 7<sup>15/16</sup></b>	N044	W044	HMVC 44	23144 CCK/W33	
		11	5.901	1.406	8.628	8	14.5	<b>SNW 44 x 7<sup>15/16</sup></b>	N44	W44	HMVC 44	22244 CCK/W33	
		11	7.287	1.406	8.628	8	21.0	<b>SNW 144 x 7<sup>15/16</sup></b>	N44	W44	HMVC 44	23244 CCK/W33, 22344 CCK/W33	
8	220	10 <sup>1/4</sup>	5.130	1.375	8.628	8	11.0	<b>SNW 3044 x 8</b>	N044	W044	HMVC 44	23044 CCK/W33	
		10 <sup>1/4</sup>	5.901	1.375	8.628	8	12.8	<b>SNW 3144 x 8</b>	N044	W044	HMVC 44	23144 CCK/W33	
		11	5.901	1.406	8.628	8	14.5	<b>SNW 44 x 8</b>	N44	W44	HMVC 44	22244 CCK/W33	

Threads: American National Form NS Class 3

# Withdrawal Sleeves

d 35 - 90 mm



d <sub>1</sub>	d	B <sub>1</sub>	B <sub>2</sub> <sup>1)</sup>	G	G <sub>1</sub>	Mass kg	Designations Withdrawal sleeve	Appropriate nut for dismnt.	hydraulic nut	lock nut	locking washer	bearing(s)
35	40	29	32	M 45x1.5	6	0.09	<b>AH 308</b>	KM 9	–	KM 7	MB 7	2208 EK, 1308 EK, 22208 EK, 21308 CCK, C 2208 KTN9, C 2208 KV 2308 EK, 22308 EK
	40	40	43	M 45x1.5	7	0.13	<b>AH 2308</b>	KM 9	–	KM 7	MB 7	
40	45	31	34	M 50x1.5	6	0.12	<b>AH 309</b>	KM 10	HMV 10 E	KM 8	MB 8	2209 EK, 1309 EK, 22209 EK, 21309 EK, C 2209 KTN9, C 2209 KV 2309 EK, 22309 EK
	45	44	47	M 50x1.5	7	0.16	<b>AH 2309</b>	KM 10	HMV 10 E	KM 8	MB 8	
45	50	35	38	M 55x2	7	0.13	<b>AHX 310</b>	KM 11	HMV 11 E	KM 9	MB 9	2210 EK, 1310 EK, 22210 EK, 21310 CCK, C 2210 KTN9, C 2210 KV 2310 K, 22310 K
	50	50	53	M 55x2	9	0.19	<b>AHX 2310</b>	KM 11	HMV 11 E	KM 9	MB 9	
50	55	37	40	M 60x2	7	0.16	<b>AHX 311</b>	KM 12	HMV 12 E	KM 10	MB 10	2211 EK, 1311 EK, 22211 EK, 21311 CCK, C 2211 KTN9, C 2211 KV 2311 K, 22311 EK
	55	54	57	M 60x2	10	0.26	<b>AHX 2311</b>	KM 12	HMV 12 E	KM 10	MB 10	
55	60	40	43	M 65x2	8	0.19	<b>AHX 312</b>	KM 13	HMV 13 E	KM 11	MB 11	2212 EK, 1312 EK, 22212 EK, 21312 CCK, C2212 KTN9, C 2212 KV 2312 K, 22312 EK
	60	58	61	M 65x2	11	0.30	<b>AHX 2312</b>	KM 13	HMV 13 E	KM 11	MB 11	
60	65	42	45	M 70x2	8	0.22	<b>AH 313 G</b>	KM 14	HMV 14 E	KM 12	MB 12	2213 EK, 1313 EK, 22213 EK, 21313 CCK, C 2213 KTN9, C 2212 KV 2313 K, 22313 K
	65	61	64	M 70x2	12	0.36	<b>AH 2313 G</b>	KM 14	HMV 14 E	KM 12	MB 12	
65	70	43	47	M 75x2	8	0.24	<b>AH 314 G</b>	KM 15	HMV 15 E	KM 13	MB 13	22214 EK, 21314 CCK, C2214 KTN9, C 2214 KV
	70	64	68	M 75x2	12	0.42	<b>AHX 2314 G</b>	KM 15	HMV 15 E	KM 13	MB 13	22314 EK, C 2314 K
70	75	45	49	M 80x2	8	0.29	<b>AH 315 G</b>	KM 16	HMV 16 E	KM 14	MB 14	2215 K, 1315 K, 22215 EK, 21315 CCK, C 2215 K, C 2215 KV 2315 K, 22315 K, C 2315 K
	75	68	72	M 80x2	12	0.48	<b>AHX 2315 G</b>	KM 16	HMV 16 E	KM 14	MB 14	
75	80	48	52	M 90x2	8	0.37	<b>AH 316</b>	KM 18	HMV 18 E	KM 15	MB 15	2216 EK, 1316 K, 22216 EK, 21316 CCK, C 2216 K, C 2216 KV 2316 K, 22316 EK, C 2316 K
	80	71	75	M 90x2	12	0.57	<b>AHX 2316</b>	KM 18	HMV 18 E	KM 15	MB 15	
80	85	52	56	M 95x2	9	0.43	<b>AHX 317</b>	KM 19	HMV 19 E	KM 16	MB 16	2217 K, 1317 K, 22217 EK, 21317 CCK, C 2217 K, C 2217 KV 2317 K, 22317 EK, C 2317 K
	85	74	78	M 95x2	13	0.65	<b>AHX 2317</b>	KM 19	HMV 19 E	KM 16	MB 16	
85	90	53	57	M 100x2	9	0.46	<b>AHX 318</b>	KM 20	HMV 20 E	KM 17	MB 17	2218 K, 1318 K, 22218 EK, 21318 CCK, C 2218 K, C 2218 KV 23218 CCK/W33
	90	63	67	M 100x2	10	0.57	<b>AHX 3218</b>	KM 20	HMV 20 E	KM 17	MB 17	
	90	79	83	M 100x2	14	0.76	<b>AHX 2318</b>	KM 20	HMV 20 E	KM 17	MB 17	2318 K, 22318 EK, C 2318 K
90	95	57	61	M 105x2	10	0.54	<b>AHX 319</b>	KM 21	HMV 21 E	KM 18	MB 18	2219 K, 1319 K, 22219 EK, 21319 CCK, C 2219 K
	95	85	89	M 105x2	16	0.9	<b>AHX 2319</b>	KM 21	HMV 21 E	KM 18	MB 18	2319 K, 22319 EK, C 2319 K

<sup>1)</sup> Width before the sleeve is pressed into the bearing bore

# Withdrawal Sleeves

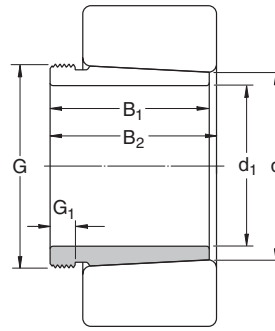
## d 95 - 145 mm

d <sub>1</sub>	d	B <sub>1</sub>	B <sub>2</sub> <sup>1)</sup>	G	G <sub>1</sub>	Mass	Designations Withdrawal sleeve	Appropriate nut for dismnt.	hydraulic nut	lock nut	locking washer	bearing(s)
						kg	–					
<b>95</b>	100	59	63	M 110x2	10	0.58	<b>AHX 320</b>	KM 22	HMV 22 E	KM 19	MB 19	2220 K, 1320 K, 22220 EK, 21320 CCK, C 2220 K
	100	64	68	M 110x2	11	0.66	<b>AHX 3120</b>	KM 22	HMV 22 E	KM 19	MB 19	23120 CCK/W33, C 2320 K, C 3120 K, C 3120 KV
	100	73	77	M 110x2	11	0.76	<b>AHX 3220</b>	KM 22	HMV 22 E	KM 19	MB 19	23220 CCK/W33
	100	90	94	M 110x2	16	1.00	<b>AHX 2320</b>	KM 22	HMV 22 E	KM 19	MB 19	2320 K, 22320 EK, C 2320 K
<b>105</b>	110	63	67	M 120x2	12	0.77	<b>AHX 322</b>	KM 24	HMV 24 E	KM 21	MB 21	1322 K
	110	68	72	M 120x2	11	0.76	<b>AHX 3122</b>	KM 24	HMV 24 E	KM 21	MB 21	2222 K, 23122 CCK/W33, 22222 EK, C 3022 K, C 2222 K
	110	82	86	M 120x2	11	1.00	<b>AHX 3222 G</b>	KM 24	HMV 24 E	KM 21	MB 21	23222 CCK/W33
	110	98	102	M 120x2	16	1.30	<b>AHX 2322 G</b>	KM 24	HMV 24 E	KM 21	MB 21	2322 K, 22322 EK
	110	82	91	M 115x2	13	0.71	<b>AH 24122</b>	KM 23	HMV 23 E	KM 21	MB 21	24122 CCK30/W33, C 4122 K30V
<b>115</b>	120	60	64	M 130x2	13	0.73	<b>AHX 3024</b>	KM 26	HMV 26 E	KM 22	MB 22	23024 CCK/W33, C 3024 K, C 3024 KV
	120	75	79	M 130x2	12	0.94	<b>AHX 3124</b>	KM 26	HMV 26 E	KM 22	MB 22	23124 CCK/W33, 22224 EK, C 2224 K
	120	90	94	M 130x2	13	1.30	<b>AHX 3224 G</b>	KM 26	HMV 26 E	KM 22	MB 22	23224 CCK/W33, C 3224K
	120	105	109	M 130x2	17	1.55	<b>AHX 2324 G</b>	KM 26	HMV 26 E	KM 22	MB 22	22324 CCK/W33
	120	73	82	M 125x2	13	0.7	<b>AH 24024</b>	KM 25	HMV 25 E	KM 22	MB 22	24024 CCK30/W33, C 4024 K30V
	120	93	102	M 130x2	13	1.00	<b>AH 24124</b>	KM 26	HMV 26 E	KM 22	MB 22	24124 CCK30/W33, C 4124 K30V
<b>125</b>	130	67	71	M 140x2	14	0.91	<b>AHX 3026</b>	KM 28	HMV 28 E	KM 24	MB 24	23026 CCK/W33, C 3026 K
	130	78	82	M 140x2	12	1.10	<b>AHX 3126</b>	KM 28	HMV 28 E	KM 24	MB 24	23126 CCK/W33, 22226 EK, C 2226 K
	130	98	102	M 140x2	15	1.50	<b>AHX 3226 G</b>	KM 28	HMV 28 E	KM 24	MB 24	23226 CCK/W33
	130	115	119	M 140x2	19	1.85	<b>AHX 2326 G</b>	KM 28	HMV 28 E	KM 24	MB 24	22326 CCK/W33
	130	83	93	M 135x2	14	0.90	<b>AH 24026</b>	KM 27	HMV 27 E	KM 24	MB 24	24026 CCK30/W33, C 4026 K30, C 4026 K30V
	130	94	104	M 140x2	14	1.15	<b>AH 24126</b>	KM 28	HMV 28 E	KM 24	MB 24	24126 CCK30/W33, C4126 K30V/VE240
	130	104	104	M 140x2	14	1.15	<b>AH 24126</b>	KM 28	HMV 28 E	KM 24	MB 24	24126 CCK30/W33, C4126 K30V/VE240
<b>135</b>	140	68	73	M 150x2	14	1.00	<b>AHX 3028</b>	KM 30	HMV 30 E	KM 26	MB 26	23028 CCK/W33, C 3028 K, C4026 K30V
	140	83	88	M 150x2	14	1.30	<b>AHX 3128</b>	KM 30	HMV 30 E	KM 26	MB 26	23128 CCK/W33, 22228 EK, C 2228 K
	140	104	109	M 150x2	15	1.75	<b>AHX 3228 G</b>	KM 30	HMV 30 E	KM 26	MB 26	23228 CCK/W33
	140	125	130	M 150x2	20	2.25	<b>AHX 2328 G</b>	KM 30	HMV 30 E	KM 26	MB 26	22328 CCK/W33
	140	83	93	M 145x2	14	0.95	<b>AH 24028</b>	KM 29	HMV 29 E	KM 26	MB 26	24028 CCK30/W33, C 4028 K30V
140	99	109	M 150x2	14	1.30	<b>AH 24128</b>	KM 30	HMV 30 E	KM 26	MB 26	24128 CCK30/W33, C 4128 K30V	
<b>145</b>	150	72	77	M 160x3	15	1.15	<b>AHX 3030</b>	KM 32	HMV 32 E	KM 28	MB 28	23030 CCK/W33, C 3030 KMB
	150	96	101	M 160x3	15	1.70	<b>AHX 3130 G</b>	KM 32	HMV 32 E	KM 28	MB 28	23130 CCK/W33, 22230 CCK/W33, C 3130 K, C 2230 K
	150	114	119	M 160x3	17	2.10	<b>AHX 3230 G</b>	KM 32	HMV 32 E	KM 28	MB 28	23230 CCK/W33
	150	135	140	M 160x3	24	2.75	<b>AHX 2330 G</b>	KM 32	HMV 32 E	KM 28	MB 28	22330 CCK/W33
	150	90	101	M 155x3	15	1.05	<b>AH 24030</b>	KM 31	HMV 31 E	KM 28	MB 28	24030 CCK30/W33, C 4030 K30V
	150	115	126	M 160x3	15	1.55	<b>AH 24130</b>	KM 32	HMV 32 E	KM 28	MB 28	24130 CCK30/W33, C 4130 K30V
	150	115	126	M 160x3	15	1.55	<b>AH 24130</b>	KM 32	HMV 32 E	KM 28	MB 28	24130 CCK30/W33, C 4130 K30V

<sup>1)</sup> Width before the sleeve is pressed into the bearing bore

# Withdrawal Sleeves

d 150 - 190 mm

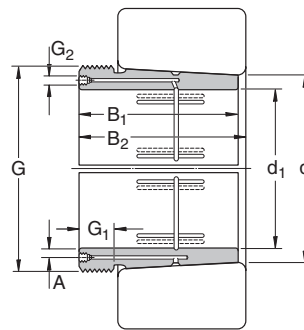


d <sub>1</sub>	d	B <sub>1</sub>	B <sub>2</sub> <sup>1)</sup>	G	G <sub>1</sub>	Mass	Designations	Appropriate	hydraulic	lock	locking	bearing(s)	
						kg	Withdrawal sleeve	nut for dismnt.	nut	nut	washer		
150	160	77	82	M 170x3	16	2.00	<b>AH 3032</b>	KM 34	HMV 34 E	KM 30	MB 30	23032 CCK/W33, C 3032 K	
	160	103	108	M 170x3	16	3.00	<b>AH 3132 G</b>	KM 34	HMV 34 E	KM 30	MB 30	23132 CCK/W33, 22232 CCK/W33, C 3132 K	
	160	124	130	M 170x3	20	3.70	<b>AH 3232 G</b>	KM 34	HMV 34 E	KM 30	MB 30	23232 CCK/W33, C 3232 K	
	160	140	146	M 170x3	24	4.35	<b>AH 2332 G</b>	KM 34	HMV 34 E	KM 30	MB 30	22332 CCK/W33	
	160	95	106	M 170x3	15	2.30	<b>AH 24032</b>	KM 34	HMV 34 E	KM 30	MB 30	24032 CCK30/W33, C 4032 K30, C 4032 K30V	
	160	124	135	M 170x3	15	3.00	<b>AH 24132</b>	KM 34	HMV 34 E	KM 30	MB 30	24132 CCK30/W33, C 4132 K30V	
	160	170	85	90	M 180x3	17	2.45	<b>AH 3034</b>	KM 36	HMV 36 E	KM 32	MB 32	23034 CCK/W33, C 3034 K
		170	104	109	M 180x3	16	3.20	<b>AH 3134 G</b>	KM 36	HMV 36 E	KM 32	MB 32	23134 CCK/W33, 22234 CCK/W33, C 3134 K, C 2234 K
		170	134	140	M 180x3	24	4.35	<b>AH 3234 G</b>	KM 36	HMV 36 E	KM 32	MB 32	23234 CCK/W33
		170	146	152	M 180x3	24	4.85	<b>AH 2334 G</b>	KM 36	HMV 36 E	KM 32	MB 32	22334 CCK/W33
170		106	117	M 180x3	16	2.70	<b>AH 24034</b>	KM 36	HMV 36 E	KM 32	MB 32	24034 CCK30/W33, C 4034 K30V	
170		125	136	M 180x3	16	3.25	<b>AH 24134</b>	KM 36	HMV 36 E	KM 32	MB 32	24134 CCK30/W33, C 4134 K30V	
170		180	92	98	M 190x3	17	2.80	<b>AH 3036</b>	KM 38	HMV 38 E	KM 34	MB 34	23036 CCK/W33, C 3036 K
		180	105	110	M 190x3	17	3.40	<b>AH 2236 G</b>	KM 38	HMV 38 E	KM 34	MB 34	22236 CCK/W33
	180	116	122	M 190x3	19	3.90	<b>AH 3136 G</b>	KM 38	HMV 38 E	KM 34	MB 34	23136 CCK/W33, C 3136 K	
	180	140	146	M 190x3	24	4.85	<b>AH 3236 G</b>	KM 38	HMV 38 E	KM 34	MB 34	23236 CCK/W33, C 3236 K	
	180	154	160	M 190x3	26	5.50	<b>AH 2336 G</b>	KM 38	HMV 38 E	KM 34	MB 34	22336 CCK/W33	
	180	116	127	M 190x3	16	3.20	<b>AH 24036</b>	KM 38	HMV 38 E	KM 34	MB 34	24036 CCK30/W33, C 4036 K30V	
	180	134	145	M 190x3	16	3.75	<b>AH 24136</b>	KM 38	HMV 38 E	KM 34	MB 34	24136 CCK30/W33, C 4136 K30V	
	180	190	96	102	M 200x3	18	3.30	<b>AH 3038 G</b>	KM 40	HMV 40 E	KM 36	MB 36	23038 CCK/W33, C 3038 K
		190	112	117	M 200x3	18	3.90	<b>AH 2238 G</b>	KM 40	HMV 40 E	KM 36	MB 36	22238 CCK/W33, C 2238 K
		190	125	131	M 200x3	20	4.50	<b>AH 3138 G</b>	KM 40	HMV 40 E	KM 36	MB 36	23138 CCK/W33, C 3138 K
190		145	152	M 200x3	25	5.40	<b>AH 3238 G</b>	KM 40	HMV 40 E	KM 36	MB 36	23238 CCK/W33	
190		160	167	M 200x3	26	6.10	<b>AH 2338 G</b>	KM 40	HMV 40 E	KM 36	MB 36	22338 CCK/W33	
190		118	131	M 200x3	18	3.55	<b>AH 24038</b>	KM 40	HMV 40 E	KM 36	MB 36	24038 CCK30/W33, C 4038 K30V	
190		146	159	M 200x3	18	4.45	<b>AH 24138</b>	KM 40	HMV 40 E	KM 36	MB 36	24138 CCK30/W33, C 4138 K30V	
190		200	102	108	Tr 210x4	19	3.70	<b>AH 3040 G</b>	HM 42 T	HMV 42 E	KM 38	MB 38	23040 CCK/W33, C 3040 K
	200	134	140	Tr 220x4	21	5.65	<b>AH 3140</b>	HM 3044	HMV 44 E	KM 38	MB 38	23140 CCK/W33, C 3140 K	
	200	153	160	Tr 220x4	25	6.60	<b>AH 3240</b>	HM 3044	HMV 44 E	KM 38	MB 38	23240 CCK/W33	
	200	170	177	Tr 220x4	30	7.60	<b>AH 2340</b>	HM 3044	HMV 44 E	KM 38	MB 38	22340 CCK/W33	
	200	127	140	Tr 210x4	18	4.00	<b>AH 24040</b>	HM 42 T	HMV 42 E	KM 38	MB 38	24040 CCK30/W33, C 4040 K30V	
	200	158	171	Tr 210x4	18	5.05	<b>AH 24140</b>	HM 42 T	HMV 42 E	KM 38	MB 38	24140 CCK30/W33, C 4140 K30V	

<sup>1)</sup> Width before the sleeve is pressed into the bearing bore

# Withdrawal Sleeves

## d 200 - 320 mm

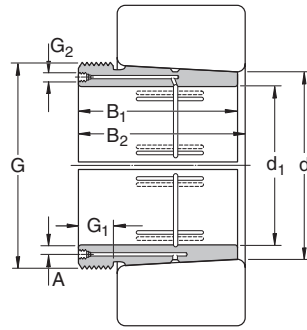


d <sub>1</sub>	d	B <sub>1</sub>	B <sub>2</sub> <sup>1)</sup>	G	G <sub>1</sub>	G <sub>2</sub>	A	Mass	Designations	Appropriate nut for dismnt.	hydraulic nut	lock nut	locking washer	bearing(s)	
															kg
200	220	111	117	Tr 230x4	20	G 1/8	6.5	7.3	<b>AOH 3044 G</b>	HM 46 T	HMV 46 E	KM 40	MB 40	23044 CCK/W33, C 3044 K	
	220	145	151	Tr 240x4	23	G 1/4	9	9.3	<b>AOH 3144</b>	HM 3048	HMV 48 E	KM 40	MB 40	23144 CCK/W33, C 3144 K	
	220	181	189	Tr 240x4	30	G 1/4	9	13.5	<b>AOH 2344</b>	HM 3048	HMV 48 E	KM 40	MB 40	23244 CCK/W33, 22344 CCK/W33	
	220	130	136	Tr 240x4	20	G 1/4	9	9.40	<b>AOH 2244</b>	HM 3048	HMV 48 E	KM 40	MB 40	22244 CCK/W33, C 2244K	
	220	138	152	Tr 230x4	20	G 1/8	6.5	8.2	<b>AOH 24044</b>	HM 46 T	HMV 46 E	KM 40	MB 40	24044 CCK30/W33, C 4044 K30V	
	220	170	184	Tr 230x4	20	G 1/8	6.5	10	<b>AOH 24144</b>	HM 46 T	HMV 46 E	KM 40	MB 40	24144 CCK30/W33	
	220	240	116	123	Tr 260x4	21	G 1/4	9	7.95	<b>AOH 3048</b>	HM 3052	HMV 52 E	HM 44 T	MB 44	23048 CCK/W33, C 3048 K
	220	240	154	161	Tr 260x4	25	G 1/4	9	12	<b>AOH 3148</b>	HM 3052	HMV 52 E	HM 44 T	MB 44	23148 CCK/W33, C 3148 K
	220	240	189	197	Tr 260x4	30	G 1/4	9	14	<b>AOH 2348</b>	HM 3052	HMV 52 E	HM 44 T	MB 44	23248 CCK/W33, 22348 CCK/W33
	220	240	138	153	Tr 250x4	20	G 1/8	6.5	8.05	<b>AOH 24048</b>	HM 50 T	HMV 50 E	HM 48 T	MB 44	24048 CCK30/W33
220	240	180	195	Tr 260x4	20	G 1/4	9	11.5	<b>AOH 24148</b>	HM 3052	HMV 52 E	HM 48 T	MB 44	24148 CCK30/W33	
240	260	128	135	Tr 280x4	23	G 1/4	9	9.6	<b>AOH 3052</b>	HM 3056	HMV 56 E	HM 48 T	MB 48	23052 CCK/W33, C 3052 K	
	260	155	161	Tr 280x4	23	G 1/4	9	13.5	<b>AOH 2252 G</b>	HM 3056	HMV 56 E	HM 48 T	MB 48	22252 CCK/W33	
	260	172	179	Tr 280x4	26	G 1/4	9	15.5	<b>AOH 3152 G</b>	HM 3056	HMV 56 E	HM 48 T	MB 48	23152 CCK/W33, C 3152 K	
	260	205	213	Tr 280x4	30	G 1/4	9	19	<b>AOH 2352 G</b>	HM 3056	HMV 56 E	HM 48 T	MB 48	23252 CCK/W33, 22352 CCK/W33	
	260	162	178	Tr 280x4	22	G 1/8	6.5	12.5	<b>AOH 24052 G</b>	HM 3056	HMV 56 E	HM 48 T	MB 48	24052 CCK30/W33	
	260	202	218	Tr 280x4	22	G 1/4	9	14	<b>AOH 24152</b>	HM 3056	HMV 56 E	HM 48 T	MB 48	24152 CCK30/W33	
	260	280	131	139	Tr 300x4	24	G 1/4	9	11	<b>AOH 3056</b>	HM 3060	HMV 60 E	HM 52 T	MB 52	23056 CCK/W33, C 3056 K
	260	280	155	163	Tr 300x4	24	G 1/4	9	15	<b>AOH 2256 G</b>	HM 3160	HMV 60 E	HM 52 T	MB 52	22256 CCK/W33
	260	280	175	183	Tr 300x4	28	G 1/4	9	17	<b>AOH 3156 G</b>	HM 3160	HMV 60 E	HM 52 T	MB 52	23156 CCK/W33, C 3156 K
	260	280	212	220	Tr 300x4	30	G 1/4	9	21.5	<b>AOH 2356 G</b>	HM 3160	HMV 60 E	HM 52 T	MB 52	23256 CCK/W33, 22356 CCK/W33
280	280	162	179	Tr 300x4	22	G 1/8	6.5	13.5	<b>AOH 24056 G</b>	HM 3160	HMV 60 E	HM 52 T	MB 52	24056 CCK30/W33	
	280	202	219	Tr 300x4	22	G 1/4	9	15	<b>AOH 24156</b>	HM 3160	HMV 60 E	HM 52 T	MB 52	24156 CCK30/W33	
	280	300	145	153	Tr 320x5	26	G 1/4	9	13	<b>AOH 3060</b>	HM 3064	HMV 64 E	HM 56 T	MB 56	23060 CCK/W33, C 3060 KM
	280	300	170	178	Tr 320x5	26	G 1/4	9	18	<b>AOH 2260 G</b>	HM 3164	HMV 64 E	HM 56 T	MB 56	22260 CCK/W33
	280	300	192	200	Tr 320x5	30	G 1/4	9	20.5	<b>AOH 3160 G</b>	HM 3164	HMV 64 E	HM 56 T	MB 56	23160 CCK/W33, C 3160 K
	280	300	228	236	Tr 320x5	34	G 1/4	9	23.5	<b>AOH 3260 G</b>	HM 3164	HMV 64 E	HM 56 T	MB 56	23260 CCK/W33
	280	300	184	202	Tr 320x5	24	G 1/8	6.5	17	<b>AOH 24060 G</b>	HM 3164	HMV 64 E	HM 56 T	MB 56	24060 CCK30/W33, C 4060 K30M
	280	300	224	242	Tr 320x5	24	G 1/4	9	18.5	<b>AOH 24160</b>	HM 3164	HMV 64 E	HM 56 T	MB 56	24160 CCK30/W33
	280	320	149	157	Tr 340x5	27	G 1/4	9	16.5	<b>AOH 3064 G</b>	HM 3068	HMV 68 E	HM 3060	MS 3060	23064 CCK/W33, C 3064 KM
	280	320	180	190	Tr 340x5	27	G 1/4	9	20	<b>AOH 2264 G</b>	HM 3168	HMV 68 E	HM 3060	MS 3060	22264 CCK/W33
300	320	209	217	Tr 340x5	31	G 1/4	9	24.5	<b>AOH 3164 G</b>	HM 3168	HMV 68 E	HM 3060	MS 3060	23164 CCK/W33, C 3164 KM	
	320	246	254	Tr 340x5	36	G 1/4	9	27.5	<b>AOH 3264 G</b>	HM 3168	HMV 68 E	HM 3060	MS 3060	23264 CCK/W33	
	320	184	202	Tr 340x5	24	G 1/8	6.5	18	<b>AOH 24064 G</b>	HM 3168	HMV 68 E	HM 3060	MS 3060	24064 CCK30/W33	
	320	242	260	Tr 340x5	24	G 1/4	9	20.5	<b>AOH 24164</b>	HM 3168	HMV 68 E	HM 3060	MS 3060	24164 CCK30/W33	
	320	340	162	171	Tr 360x5	28	G 1/4	9	19	<b>AOH 3068 G</b>	HM 3072	HMV 72 E	HM 3064	MS 3068-64	23068 CCK/W33 C 3068 KM
	320	340	225	234	Tr 360x5	33	G 1/4	9	28.5	<b>AOH 3168 G</b>	HM 3172	HMV 72 E	HM 3064	MS 3068-64	23168 CCK/W33, C 3168 KM
	320	340	264	273	Tr 360x5	38	G 1/4	9	32	<b>AOH 3268 G</b>	HM 3172	HMV 72 E	HM 3064	MS 3068-64	23268 CCK/W33, 23268 CAK/W33
	320	340	206	225	Tr 360x5	26	G 1/4	9	18	<b>AOH 24068</b>	HM 3172	HMV 72 E	HM 3064	MS 3068-64	24068 CCK30/W33
	320	340	269	288	Tr 360x5	26	G 1/4	9	25.5	<b>AOH 24168</b>	HM 3172	HMV 72 E	HM 3064	MS 3068-64	24168 ECCK30/W33

<sup>1)</sup> Width before the sleeve is pressed into the bearing bore

# Withdrawal Sleeves

## d 340 - 440 mm



d <sub>1</sub>	d	B <sub>1</sub>	B <sub>2</sub> <sup>1)</sup>	G	G <sub>1</sub>	G <sub>2</sub>	A	Mass	Designations	Appropriate	hydraulic	lock	locking	bearing(s)
								kg	Withdrawal sleeve	nut for dismt.	nut	nut	washer	
340	360	167	176	Tr 380x5	30	G 1/4	9	21.0	<b>AOH 3072 G</b>	HM 3076	HMV 76 E	HM 3068	MS 3068-64	23072 CCK/W33, C 3072 KM
	360	229	238	Tr 380x5	35	G 1/4	9	30.5	<b>AOH 3172 G</b>	HM 3176	HMV 76 E	HM 3068	MS 3068-64	23172 CCK/W33, C 3172 KM
	360	274	283	Tr 380x5	40	G 1/4	9	35.5	<b>AOH 3272 G</b>	HM 3176	HMV 76 E	HM 3068	MS 3068-64	23272 CAK/W33
	360	206	226	Tr 380x5	26	G 1/4	9	20.0	<b>AOH 24072</b>	HM 3176	HMV 76 E	HM 3068	MS 3068-64	24072 CCK30/W33
	360	269	289	Tr 380x5	26	G 1/4	9	26.0	<b>AOH 24172</b>	HM 3176	HMV 76 E	HM 3068	MS 3068-64	24172 ECCK30/W33
360	380	170	180	Tr 400x5	31	G 1/4	9	22.5	<b>AOH 3076 G</b>	HM 3080	HMV 80 E	HM 3072	MS 3072	23076 CCK/W33, C 3076 KM
	380	232	242	Tr 400x5	36	G 1/4	9	33.0	<b>AOH 3176 G</b>	HM 3180	HMV 80 E	HM 3072	MS 3072	23176 CAK/W33, C 3176 KMB
	380	284	294	Tr 400x5	42	G 1/4	9	42.0	<b>AOH 3276 G</b>	HM 3180	HMV 80 E	HM 3072	MS 3072	23276 CAK/W33
	380	208	228	Tr 400x5	28	G 1/4	9	23.5	<b>AOH 24076</b>	HM 3180	HMV 80 E	HM 3072	MS 3072	24076 CCK30/W33
	380	271	291	Tr 400x5	28	G 1/4	9	31.0	<b>AOH 24176</b>	HM 3180	HMV 80 E	HM 3072	MS 3072	24176 ECAK30/W33
380	400	183	193	Tr 420x5	33	G 1/4	9	26.0	<b>AOH 3080 G</b>	HM 3080	HMV 84 E	HM 3076	MS 3080-76	23080 CCK/W33, C 3080 KM
	400	240	250	Tr 420x5	38	G 1/4	9	36.0	<b>AOH 3180 G</b>	HM 3184	HMV 84 E	HM 3076	MS 3080-76	23180 CAK/W33, C 3180 KMB
	400	302	312	Tr 420x5	44	G 1/4	9	48.0	<b>AOH 3280 G</b>	HM 3184	HMV 84 E	HM 3076	MS 3080-76	23280 CAK/W33
	400	228	248	Tr 420x5	28	G 1/4	9	27.0	<b>AOH 24080</b>	HM 3184	HMV 84 E	HM 3076	MS 3080-76	24080 CACK30/W33
	400	278	298	Tr 420x5	28	G 1/4	9	35.0	<b>AOH 24180</b>	HM 3184	HMV 84 E	HM 3076	MS 3080-76	24180 ECCK30/W33
400	420	186	196	Tr 440x5	34	G 1/4	9	28.0	<b>AOH 3084 G</b>	HM 3088	HMV 88 E	HM 3080	MS 3080-76	23084 CAK/W33, C 3084 KM
	420	266	276	Tr 440x5	40	G 1/4	9	43.0	<b>AOH 3184 G</b>	HM 3188	HMV 88 E	HM 3080	MS 3080-76	23184 CK/W33, C 3184 KM
	420	321	331	Tr 440x5	46	G 1/4	9	54.5	<b>AOH 3284 G</b>	HM 3188	HMV 88 E	HM 3080	MS 3080-76	23284 CAK/W33
	420	230	252	Tr 440x5	30	G 1/4	9	29.0	<b>AOH 24084</b>	HM 3188	HMV 88 E	HM 3080	MS 3080-76	24084 ECAK30/W33
	420	310	332	Tr 440x5	30	G 1/4	9	39.0	<b>AOH 24184</b>	HM 3188	HMV 88 E	HM 3080	MS 3080-76	24184 ECAK30/W33
420	440	194	205	Tr 460x5	35	G 1/4	9	31.0	<b>AOHX 3088 G</b>	HM 3092	HMV 92 E	HM 3084	MS 3084	23088 CAK/W33, C 3088 KMB
	440	270	281	Tr 460x5	42	G 1/4	9	46.0	<b>AOHX 3188 G</b>	HM 3192	HMV 92 E	HM 3084	MS 3084	23188 CAK/W33, C 3188 KMB
	440	330	341	Tr 460x5	48	G 1/4	9	64.5	<b>AOHX 3288 G</b>	HM 3192	HMV 92 E	HM 3084	MS 3084	23288 CAK/W33
	440	242	264	Tr 460x5	30	G 1/4	9	32.0	<b>AOH 24088</b>	HM 3192	HMV 92 E	HM 3084	MS 3084	24088 ECAK30/W33
	440	310	332	Tr 460x5	30	G 1/4	9	45.5	<b>AOH 24188</b>	HM 3192	HMV 92 E	HM 3084	MS 3084	24188 ECAK30/W33
440	460	202	213	Tr 480x5	37	G 1/4	9	34.0	<b>AOHX 3092 G</b>	HM 3096	HMV 96 E	HM 3088	MS 3092-88	23092 CAK/W33, C 3092 KM
	460	285	296	Tr 480x5	43	G 1/4	9	51.5	<b>AOHX 3192 G</b>	HM 3196	HMV 96 E	HM 3088	MS 3092-88	23192 CAK/W33, C 3192 KM
	460	349	360	Tr 480x5	50	G 1/4	9	80.0	<b>AOHX 3292 G</b>	HM 3196	HMV 96 E	HM 3088	MS 3092-88	23292 CAK/W33
	460	250	273	Tr 480x5	32	G 1/4	9	34.5	<b>AOH 24092</b>	HM 3196	HMV 96 E	HM 3088	MS 3092-88	24092 ECAK30/W33
	460	332	355	Tr 480x5	32	G 1/4	9	50.0	<b>AOH 24192</b>	HM 3196	HMV 96 E	HM 3088	MS 3092-88	24192 ECAK30/W33

<sup>1)</sup> Width before the sleeve is pressed into the bearing bore



# Withdrawal Sleeves

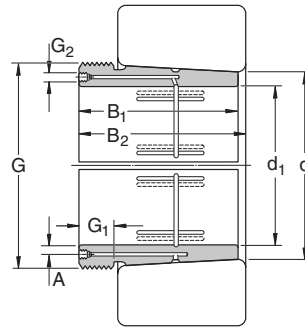
## d 460 - 600 mm

d <sub>1</sub>	d	B <sub>1</sub>	B <sub>2</sub> <sup>1)</sup>	G	G <sub>1</sub>	G <sub>2</sub>	A	Mass	Designations Withdrawal sleeve	Appropriate nut for dismnt.	hydraulic nut	lock nut	locking washer	bearing(s)
<b>460</b>	480	205	217	Tr 500x5	38	G 1/4	9	34.0	<b>AOHX 3096 G</b>	HM 30/500	HMV 100 E	HM 3092	MS 3092-88	23096 CAK/W33, C 3096 KM
	480	295	307	Tr 500x5	45	G 1/4	9	63.0	<b>AOHX 3196 G</b>	HM 31/500	HMV 100 E	HM 3092	MS 3092-88	23196 CAK/W33, C 3196 KMB
	480	364	376	Tr 500x5	52	G 1/4	9	81.0	<b>AOHX 3296 G</b>	HM 31/500	HMV 100 E	HM 3092	MS 3092-88	23296 CAK/W33
	480	250	273	Tr 500x5	32	G 1/4	9	36.5	<b>AOH 24096</b>	HM 31/500	HMV 100 E	HM 3092	MS 3092-88	24096 ECAK30/W33
<b>480</b>	480	340	363	Tr 500x5	32	G 1/4	9	51.5	<b>AOH 24196</b>	HM 31/500	HMV 100 E	HM 3092	MS 3092-88	24196 ECAK30/W33
	500	209	221	Tr 530x6	40	G 1/4	9	41.0	<b>AOHX 30/500 G</b>	HM 30/530	HMV 106 E	HM 3096	MS 30/500-96	230/500 CAK/W33, C 30/500 KM
	500	313	325	Tr 530x6	47	G 1/4	9	66.5	<b>AOHX 31/500 G</b>	HM 31/530	HMV 106 E	HM 3096	MS 30/500-96	231/500 CAK/W33, C 31/500 KM
	500	393	405	Tr 530x6	54	G 1/4	9	89.5	<b>AOHX 32/500 G</b>	HM 31/530	HMV 106 E	HM 3096	MS 30/500-96	232/500 CAK/W33
<b>500</b>	500	253	276	Tr 530x6	35	G 1/4	9	43.0	<b>AOH 240/500</b>	HM 31/530	HMV 106 E	HM 3096	MS 30/500-96	240/500 ECAK30/W33
	500	360	383	Tr 530x6	35	G 1/4	9	63.0	<b>AOH 241/500</b>	HM 31/530	HMV 106 E	HM 3096	MS 30/500-96	241/500 ECAK30/W33, C 41/500 K3OMB
	530	230	242	Tr 560x6	45	G 1/4	10	63.5	<b>AOH 30/530</b>	HM 30/560	HMV 112 E	HM 30/500	MS 30/500-96	230/530 CAK/W33, C 30/530 KM
	530	325	337	Tr 560x6	53	G 1/4	10	93.5	<b>AOH 31/530</b>	HM 31/560	HMV 112 E	HM 30/500	MS 30/500-96	231/530 CAK/W33, C 31/530 KM
<b>530</b>	530	412	424	Tr 560x6	57	G 1/4	10	142	<b>AOH 32/530 G</b>	HM 31/560	HMV 112 E	HM 30/500	MS 30/500-96	232/530 CAK/W33
	530	285	309	Tr 560x6	35	G 1/4	9	64.5	<b>AOH 240/530 G</b>	HM 31/560	HMV 112 E	HM 30/500	MS 30/500-96	240/530 ECAK30/W33
	530	370	394	Tr 560x6	35	G 1/4	9	92.0	<b>AOH 241/530 G</b>	HM 31/560	HMV 112 E	HM 30/500	MS 30/500-96	241/530 ECAK30/W33
	560	240	252	Tr 600x6	45	G 1/4	11	73.5	<b>AOHX 30/560</b>	HM 30/600	HMV 120 E	HM 30/530	MS 30/600-530	230/560 CAK/W33, C 30/560 KM
<b>560</b>	560	335	347	Tr 600x6	55	G 1/4	11	107	<b>AOH 31/560</b>	HM 31/600	HMV 120 E	HM 30/530	MS 30/600-530	231/560 CAK/W33, C 31/560 KMB
	560	422	434	Tr 600x6	57	G 1/4	11	143	<b>AOHX 32/560</b>	HM 31/600	HMV 120 E	HM 30/530	MS 30/600-530	232/560 CAK/W33
	560	296	320	Tr 600x6	38	G 1/4	9	71.0	<b>AOH 240/560 G</b>	HM 31/600	HMV 120 E	HM 30/530	MS 30/600-530	240/560 ECAK30/W33
	560	393	417	Tr 600x6	38	G 1/4	9	107	<b>AOH 241/560 G</b>	HM 31/600	HMV 120 E	HM 30/530	MS 30/600-530	241/560 ECAK30/W33
<b>570</b>	600	245	259	Tr 630x6	45	G 1/4	11	77.0	<b>AOHX 30/600</b>	HM 30/630	HMV 126 E	HM 30/560	MS 30/560	230/600 CAK/W33, C 30/600 KM
	600	355	369	Tr 630x6	55	G 1/4	11	120	<b>AOHX 31/600</b>	HM 31/630	HMV 126 E	HM 30/560	MS 30/560	231/600 CAK/W33, C 31/600 KMB
	600	445	459	Tr 630x6	57	G 1/4	11	159	<b>AOHX 32/600 G</b>	HM 31/630	HMV 126 E	HM 30/560	MS 30/560	232/600 CAK/W33
	600	310	336	Tr 630x6	38	G 1/4	9	108	<b>AOHX 240/600</b>	HM 31/630	HMV 126 E	HM 30/560	MS 30/560	240/600 ECAK30/W33
<b>600</b>	600	413	439	Tr 630x6	38	G 1/4	9	120	<b>AOHX 241/600</b>	HM 31/630	HMV 126 E	HM 30/560	MS 30/560	241/600 ECAK30/W33
	630	258	272	Tr 670x6	46	G 1/4	11	88.5	<b>AOH 30/630</b>	HM 30/670	HMV 134 E	HM 30/600	MS 30/600-530	230/630 CAK/W33, C 30/630 KM
	630	375	389	Tr 670x6	60	G 1/4	11	139	<b>AOH 31/630</b>	HM 31/670	HMV 134 E	HM 30/600	MS 30/600-530	231/630 CAK/W33, C 31/630 KMB
	630	475	489	Tr 670x6	63	G 1/4	11	188	<b>AOH 32/630 G</b>	HM 31/670	HMV 134 E	HM 30/600	MS 30/600-530	232/630 CAK/W33
<b>630</b>	630	330	356	Tr 670x6	40	G 1/4	9	101	<b>AOH 240/630 G</b>	HM 31/670	HMV 134 E	HM 30/600	MS 30/600-530	240/630 ECAK30/W33
	630	440	466	Tr 670x6	40	G 1/4	9	139	<b>AOH 241/630 G</b>	HM 31/670	HMV 134 E	HM 30/600	MS 30/600-530	241/630 ECAK30/W33

<sup>1)</sup> Width before the sleeve is pressed into the bearing bore

# Withdrawal Sleeves

d 630 - 900 mm



d <sub>1</sub>	d	B <sub>1</sub>	B <sub>2</sub> <sup>1)</sup>	G	G <sub>1</sub>	G <sub>2</sub>	A	Mass kg	Designations Withdrawal sleeve	Appropriate nut for dismnt.	hydraulic nut	lock nut	locking washer	bearing(s)
630	670	280	294	Tr 710x7	50	G 1/4	12	125	<b>AOH 30/670</b>	HM 30/710	HMV 142 E	HM 30/630	MS 30/630	230/670 CAK/W33, C 30/670 KM
	670	395	409	Tr 710x7	59	G 1/4	12	189	<b>AOHX 31/670</b>	HM 31/710	HMV 142 E	HM 30/630	MS 30/630	231/670 CAK/W33, C 31/670 KMB
	670	500	514	Tr 710x7	62	G 1/4	12	252	<b>AOH 32/670 G</b>	HM 31/710	HMV 142 E	HM 30/630	MS 30/630	232/670 CAK/W33
	670	348	374	Tr 710x7	40	G 1/4	12	140	<b>AOH 240/670 G</b>	HM 31/710	HMV 142 E	HM 30/630	MS 30/630	240/670 ECAK30/W33
	670	452	478	Tr 710x7	40	G 1/4	12	180	<b>AOH 241/670</b>	HM 31/710	HMV 142 E	HM 30/630	MS 30/630	241/670 ECAK30/W33
670	710	286	302	Tr 750x7	50	G 1/4	15	138	<b>AOHX 30/710</b>	HM 30/750	HMV 150 E	HM 30/670	MS 30/670	230/710 CAK/W33, C 30/710 KM
	710	405	421	Tr 750x7	60	G 1/4	15	207	<b>AOHX 31/710</b>	HM 31/750	HMV 150 E	HM 30/670	MS 30/670	231/710 CAK/W33, C 31/710 KMB
	710	515	531	Tr 750x7	65	G 1/4	15	278	<b>AOH 32/710 G</b>	HM 31/750	HMV 150 E	HM 30/670	MS 30/670	232/710 CAK/W33
	710	360	386	Tr 750x7	45	G 1/4	12	155	<b>AOH 240/710 G</b>	HM 31/750	HMV 150 E	HM 30/670	MS 30/670	240/710 ECAK30/W33, C 40/710 K30M
	710	483	509	Tr 750x7	45	G 1/4	12	205	<b>AOH 241/710</b>	HM 31/750	HMV 150 E	HM 30/670	MS 30/670	241/710 ECAK30/W33
710	750	300	316	Tr 800x7	50	G 1/4	15	145	<b>AOH 30/750</b>	HM 30/800	HMV 160 E	HM 30/710	MS 30/710	230/750 CAK/W33, C 30/750 KMB
	750	425	441	Tr 800x7	60	G 1/4	15	238	<b>AOH 31/750</b>	HM 31/800	HMV 160 E	HM 30/710	MS 30/710	231/750 CAK/W33, C 31/750 KMB
	750	540	556	Tr 800x7	65	G 1/4	15	320	<b>AOH 32/750</b>	HM 31/800	HMV 160 E	HM 30/710	MS 30/710	232/750 CAK/W33
	750	380	408	Tr 800x7	45	G 1/4	12	178	<b>AOH 240/750 G</b>	HM 31/800	HMV 160 E	HM 30/710	MS 30/710	240/750 ECAK30/W33
	750	520	548	Tr 800x7	45	G 1/4	12	240	<b>AOH 241/750 G</b>	HM 31/800	HMV 160 E	HM 30/710	MS 30/710	241/750 ECAK30/W33
750	800	308	326	Tr 850x7	50	G 1/4	15	204	<b>AOH 30/800</b>	HM 30/850	HMV 170 E	HM 30/750	MS 30/800-750	230/800 CAK/W33, C 30/800 KMB
	800	438	456	Tr 850x7	63	G 1/4	15	305	<b>AOH 31/800</b>	HM 31/850	HMV 170 E	HM 30/750	MS 30/800-750	231/800 CAK/W33, C 31/800 KMB
	800	550	568	Tr 850x7	67	G 1/4	15	401	<b>AOH 32/800</b>	HM 31/850	HMV 170 E	HM 30/750	MS 30/800-750	232/800 CAK/W33
	800	395	423	Tr 850x7	50	G 1/4	15	237	<b>AOH 240/800 G</b>	HM 31/850	HMV 170 E	HM 30/750	MS 30/800-750	240/800 ECAK30/W33
	800	525	553	Tr 850x7	50	G 1/4	15	318	<b>AOH 241/800 G</b>	HM 31/850	HMV 170 E	HM 30/750	MS 30/800-750	241/800 ECAK30/W33
800	850	325	343	Tr 900x7	53	G 1/4	15	230	<b>AOH 30/850</b>	HM 30/900	HMV 180 E	HM 30/800	MS 30/800-750	230/850 CAK/W33, C 30/850 KMB
	850	462	480	Tr 900x7	62	G 1/4	15	345	<b>AOH 31/850</b>	HM 31/900	HMV 180 E	HM 30/800	MS 30/800-750	231/850 CAK/W33, C 31/850 KMB
	850	585	603	Tr 900x7	70	G 1/4	15	461	<b>AOH 32/850</b>	HM 31/900	HMV 180 E	HM 30/800	MS 30/800-750	232/850 CAK/W33
	850	415	445	Tr 900x7	50	G 1/4	15	265	<b>AOH 240/850 G</b>	HM 31/900	HMV 180 E	HM 30/800	MS 30/800-750	240/850 ECAK30/W33
	850	560	600	Tr 900x7	60	G 1/4	15	368	<b>AOH 241/850</b>	HM 31/900	HMV 180 E	HM 30/800	MS 30/800-750	241/850 ECAK30/W33
850	900	335	355	Tr 950x8	55	G 1/4	15	250	<b>AOH 30/900</b>	HM 30/950	HMV 190 E	HM 30/850	MS 30/900-850	230/900 CAK/W33, C 30/900 KM
	900	475	495	Tr 950x8	63	G 1/4	15	379	<b>AOH 31/900</b>	HM 31/950	HMV 190 E	HM 30/850	MS 30/900-850	231/900 CAK/W33
	900	585	605	Tr 950x8	70	G 1/4	15	489	<b>AOH 32/900</b>	HM 31/950	HMV 190 E	HM 30/850	MS 30/900-850	232/900 CAK/W33
	900	430	475	Tr 950x8	55	G 1/4	15	296	<b>AOH 240/900</b>	HM 31/950	HMV 190 E	HM 30/850	MS 30/900-850	240/900 ECAK30/W33
	900	575	620	Tr 950x8	60	G 1/4	15	402	<b>AOH 241/900</b>	HM 31/950	HMV 190 E	HM 30/850	MS 30/900-850	241/900 ECAK30/W33
900	950	355	375	Tr 1000x8	55	G 1/4	15	285	<b>AOH 30/950</b>	HM 30/1000	HMV 200 E	HM 30/900	MS 30/900-850	230/950 CAK/W33, C 30/950 KMB
	950	500	520	Tr 1000x8	62	G 1/4	15	426	<b>AOH 31/950</b>	HM 31/1000	HMV 200 E	HM 30/900	MS 30/900-850	231/950 CAK/W33
	950	600	620	Tr 1000x8	70	G 1/4	15	533	<b>AOH 32/950</b>	HM 31/1000	HMV 200 E	HM 30/900	MS 30/900-850	232/950 CAK/W33
	950	467	512	Tr 1000x8	55	G 1/4	15	340	<b>AOH 240/950</b>	HM 31/1000	HMV 200 E	HM 30/900	MS 30/900-850	240/950 CAK30/W33
	950	605	650	Tr 1000x8	60	G 1/4	15	449	<b>AOH 241/950</b>	HM 31/1000	HMV 200 E	HM 30/900	MS 30/900-850	241/950 CAK30/W33

<sup>1)</sup> Width before the sleeve is pressed into the bearing bore

# Withdrawal Sleeves

## d 950 - 1000 mm

d <sub>1</sub>	d	B <sub>1</sub>	B <sub>2</sub> <sup>1)</sup>	G	G <sub>1</sub>	G <sub>2</sub>	A	Mass	Designations					
									Withdrawal sleeve	Appropriate nut for dismnt.	hydraulic nut	lock nut	locking washer	bearing(s)
								kg	–					
<b>950</b>	1 000	365	387	Tr 1060x8	57	G 1/4	15	318	<b>AOH 30/1000</b>	HM 30/1060	HMV 212 E	HM 30/950	MS 30/950	230/1000 CAKF/W33, C 30/1000 KM
	1 000	525	547	Tr 1060x8	63	G 1/4	15	485	<b>AOH 31/1000</b>	HM 31/1060	HMV 212 E	HM 30/950	MS 30/950	231/1000 CAKF/W33, C 31/1000 KMB
	1 000	630	652	Tr 1060x8	70	G 1/4	15	608	<b>AOH 32/1000</b>	HM 31/1060	HMV 212 E	HM 30/950	MS 30/950	232/1000 CAK/W33
	1 000	469	519	Tr 1060x8	57	G 1/4	15	369	<b>AOH 240/1000</b>	HM 31/1060	HMV 212 E	HM 30/950	MS 30/950	240/1000 CAK30F/W33
	1 000	645	695	Tr 1060x8	65	G 1/4	15	519	<b>AOH 241/1000</b>	HM 31/1060	HMV 212 E	HM 30/950	MS 30/950	241/1000 ECAK30/W33
<b>1000</b>	1 060	385	407	Tr 1120x8	60	G 1/4	15	406	<b>AOH 30/1060</b>	HM 30/1120	HMV 224 E	HM 30/1000	MS 30/1000	230/1060 CAKF/W33
	1 060	540	562	Tr 1120x8	65	G 1/4	15	599	<b>AOH 31/1060</b>	HM 30/1120	HMV 224 E	HM 30/1000	MS 30/1000	231/1060 CAK/W33
	1 060	498	548	Tr 1120x8	60	G 1/4	15	479	<b>AOH 240/1060</b>	HM 30/1120	HMV 224 E	HM 30/1000	MS 30/1000	240/1060 CAK30F/W33
	1 060	665	715	Tr 1120x8	65	G 1/4	15	652	<b>AOH 241/1060</b>	HM 30/1120	HMV 224 E	HM 30/1000	MS 30/1000	241/1060 CAK30/W33

<sup>1)</sup> Width before the sleeve is pressed into the bearing bore

