

Catalogue No. STH2007



STAINLESS & THERMOPLASTIC BEARING UNITS



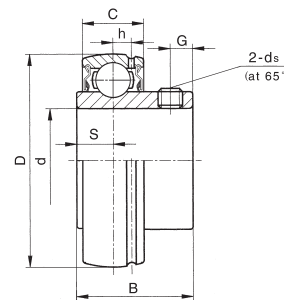


Bearing Features

- Solid base for All types
- Housing and Insert Entirely Stainless
- Food Grade Grease “FM222”
- Outer Ring Anti-Rotation Device
- Investment cast Housing
- Specifically designed for use in Washdown application, and good chemical resistance
- AISI 304 Stainless Steel Housing
- AISI 304 Grease Fitting
- AISI 440C Stainless Steel Bearing insert
- Internal Rubber Seal with AISI 302 Flinger
- AISI 420 Setscrew
- VALOX 420 high grade thermoplastic material

SUC

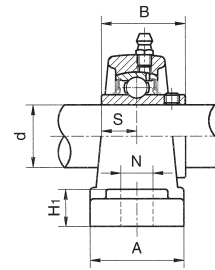
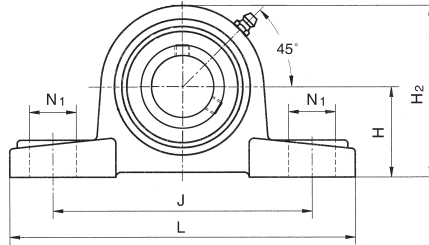
Stainless Steel insert bearings



Unit No.	Shaft dia d	Dimensions (inches)						Setscrew ds	Basic load Ratings (lbs.)		
		D	B	C	S	S ₁	G		Dynamic	Static	
SUC 201-8	1/2	1.8504	1.2205	0.6299	0.5000	0.7205	0.1969	M6x 0.75	1650	990	
SUC 202-10	5/8	1.8504	1.2205	0.6299	0.5000	0.7205	0.1969	M6x 0.75	1650	990	
SUC 204-12	3/4	1.8504	1.2205	0.6299	0.5000	0.7205	0.1969	M6x 0.75	2210	1390	
SUC 205-16	1	2.0472	1.3425	0.6693	0.5630	0.7795	0.1969	M6x 0.75	2430	1570	
SUC 206-19	1 3/16	2.4409	1.5000	0.7480	0.6260	0.8740	0.1969	M8x 1.0	3350	2250	
SUC 206-20	1 1/4	2.4409	1.5000	0.7480	0.6260	0.8740	0.1969	M8x 1.0	3350	2250	
SUC 207-20	1 1/4	2.8346	1.6890	0.7874	0.6890	1.0000	0.2756	M8x 1.0	4430	3060	
SUC 207-22	1 3/8	2.8346	1.6890	0.7874	0.6890	1.0000	0.2756	M8x 1.0	4430	3060	
SUC 207-23	1 7/16	2.8346	1.6890	0.7874	0.6890	1.0000	0.2756	M8x 1.0	4430	3060	
SUC 208-24	1 1/2	3.1496	1.9370	0.8661	0.7480	1.1890	0.3150	M8x 1.0	5640	3990	
SUC 209-28	1 3/4	3.3465	1.9370	0.8661	0.7480	1.1890	0.3150	M8x 1.0	5640	3990	
SUC 210-31	1 15/16	3.5433	2.0315	0.9449	0.7480	1.2835	0.3937	M10x 1.25	6060	4450	
SUC 210-32	2	3.5433	2.0315	0.9449	0.7480	1.2835	0.3937	M10x 1.25	6060	4450	
SUC 211-35	2 3/16	3.9370	2.1890	0.9843	0.8740	1.3150	0.3937	M10x 1.25	7480	5610	
SUC 212-39	2 7/16	4.3307	2.5630	1.0670	1.0000	1.5630	0.3937	M10x 1.25	9020	6930	
				Dimensions (mm)							
SUC 204	20	47	31.0	17	12.7	18.3	5	M6x 0.75	2210	1390	
SUC 205	25	52	34.1	17	14.3	19.8	5	M6x 0.75	2430	1570	
SUC 206	30	62	38.1	19	15.9	22.2	5	M8x 1.0	3350	2250	
SUC 207	35	72	42.9	20	17.5	25.4	7	M8x 1.0	4430	3060	
SUC 208	40	80	49.2	22	19.0	30.2	8	M8x 1.0	5640	3990	
SUC 209	45	85	49.2	22	19.0	30.2	8	M10x 1.25	5640	3990	
SUC 210	50	90	51.6	24	19.0	32.6	10	M10x 1.25	6060	4450	
SUC 211	55	100	55.6	25	22.2	33.4	10	M10x 1.25	7480	5610	
SUC 212	60	110	65.1	27	25.4	39.7	10	M10x 1.25	9020	6930	

SUCSP

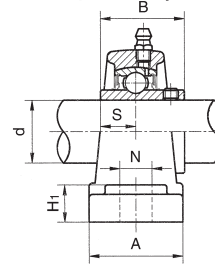
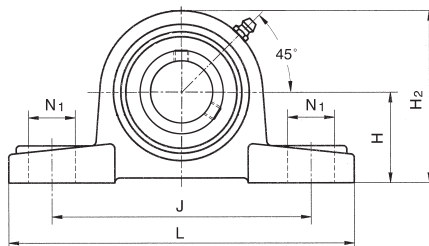
All Stainless Steel pillow block units



Unit No.	Shaft dia d	Dimensions (inches)										Bolt used
		H	L	J	A	N ₁	N	H ₁	H ₂	B	S	
SUCSP 201-8	1/2	1-5/16	4-31/32	3-3/4	1-1/2	3/4	1/2	19/32	2-9/16	1-7/32	1/2	3/8
SUCSP 202-10	5/8	1-5/16	4-31/32	3-3/4	1-1/2	3/4	1/2	19/32	2-9/16	1-7/32	1/2	3/8
SUCSP 204-12	3/4	1-5/16	4-31/32	3-3/4	1-1/2	3/4	1/2	19/32	2-9/16	1-7/32	1/2	3/8
SUCSP 205-16	1	1-7/16	5-1/2	4-1/8	1-1/2	3/4	1/2	5/8	2-3/4	1-11/32	9/16	3/8
SUCSP 206-19	1 3/16	1-11/16	6-1/2	4-3/4	1-7/8	13/16	21/32	23/32	3-1/4	1-1/2	5/8	1/2
SUCSP 206-20	1 1/4	1-11/16	6-1/2	4-3/4	1-7/8	13/16	21/32	23/32	3-1/4	1-1/2	5/8	1/2
SUCSP 207-20	1 1/4	1-7/8	6-9/16	5	1-7/8	13/16	21/32	3/4	3-23/32	1-11/16	11/16	1/2
SUCSP 207-22	1 3/8	1-7/8	6-9/16	5	1-7/8	13/16	21/32	3/4	3-23/32	1-11/16	11/16	1/2
SUCSP 207-23	1 7/16	1-7/8	6-9/16	5	1-7/8	13/16	21/32	3/4	3-23/32	1-11/16	11/16	1/2
SUCSP 208-24	1 1/2	1-15/16	7-1/4	5-3/8	2-1/8	29/32	21/32	3/4	3-15/16	1-15/16	3/4	1/2
SUCSP 209-28	1 3/4	2-1/8	7-1/2	5-3/4	2-1/8	29/32	21/32	25/32	4-9/32	1-15/16	3/4	1/2
SUCSP 210-31	1 15/16	2-1/4	8-1/8	6-1/4	2-3/8	1	25/32	7/8	4-1/2	2-1/32	3/4	5/8
SUCSP 210-32	2	2-1/4	8-1/8	6-1/4	2-3/8	1	25/32	7/8	4-1/2	2-1/32	3/4	5/8
SUCSP 211-35	2 3/16	2-1/2	8-5/8	6-23/32	2-3/8	1	25/32	7/8	4-15/16	2-3/16	7/8	5/8
SUCSP 212-39	2 7/16	2-3/4	9-1/2	7-1/4	2-3/4	1	25/32	1	5-7/16	2-9/16	7/8	5/8
Dimensions (mm)												
SUCSP 204	20	33.3	126	95	38	19	13	15	65	31.0	12.7	M10
SUCSP 205	25	36.5	140	105	38	19	13	16	70	34.1	14.3	M10
SUCSP 206	30	42.9	165	121	48	21	17	18	83	38.1	15.9	M14
SUCSP 207	35	47.6	167	127	48	21	17	19	94	42.9	17.5	M14
SUCSP 208	40	49.2	184	137	54	23	17	19	100	49.2	19.0	M14
SUCSP 209	45	54.0	190	146	54	23	17	20	109	49.2	19.0	M14
SUCSP 210	50	57.2	206	159	60	25	20	22	114	51.6	19.0	M16
SUCSP 211	55	63.5	219	171	60	25	20	22	125	55.6	22.2	M16
SUCSP 212	60	69.8	241	184	70	25	20	25	138	65.1	25.4	M16

SUCTP

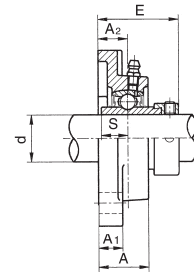
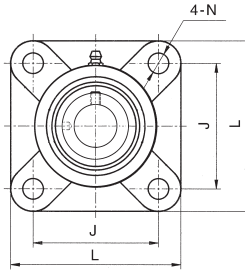
Thermoplastic pillow block units with Stainless Steel bearings



Unit No.	Shaft dia d	Dimensions (inches)										Bolt used
		H	L	J	A	N ₁	N	H ₁	H ₂	B	S	
SUCTP 201-8	1/2	1-5/16	5	3-3/4	1-1/2	9/16	7/16	9/16	2-9/16	1-7/32	1/2	3/8
SUCTP 202-10	5/8	1-5/16	5	3-3/4	1-1/2	9/16	7/16	9/16	2-9/16	1-7/32	1/2	3/8
SUCTP 204-12	3/4	1-5/16	5	3-3/4	1-1/2	9/16	7/16	9/16	2-9/16	1-7/32	1/2	3/8
SUCTP 205-16	1	1-7/16	5-1/2	4-1/8	1-1/2	9/16	7/16	9/16	2-13/16	1-11/32	9/16	3/8
SUCTP 206-19	1 3/16	1-11/16	6-13/32	4-11/16	1-13/16	13/16	9/16	23/32	3-1/4	1-1/2	5/8	1/2
SUCTP 206-20	1 1/4	1-11/16	6-13/32	4-11/16	1-13/16	13/16	9/16	23/32	3-1/4	1-1/2	5/8	1/2
SUCTP 207-20	1 1/4	1-7/8	6-5/8	5-1/32	1-7/8	13/16	9/16	23/32	3-23/32	1-11/16	11/16	1/2
SUCTP 207-22	1 3/8	1-7/8	6-5/8	5-1/32	1-7/8	13/16	9/16	23/32	3-23/32	1-11/16	11/16	1/2
SUCTP 207-23	1 7/16	1-7/8	6-5/8	5-1/32	1-7/8	13/16	9/16	23/32	3-23/32	1-11/16	11/16	1/2
SUCTP 208-24	1 1/2	1-15/16	7-1/4	5-3/8	2-1/8	29/32	9/16	25/32	3-15/16	1-15/16	3/4	1/2
SUCTP 209-28	1 3/4	2-1/8	7-1/2	5-3/4	2-1/8	29/32	21/32	25/32	4-9/32	1-15/16	3/4	1/2
SUCTP 210-31	1 15/16	2-1/4	8-1/8	6-1/4	2-3/8	1	25/32	7/8	4-1/2	2-1/32	3/4	5/8
SUCTP 210-32	2	2-1/4	8-1/8	6-1/4	2-3/8	1	25/32	7/8	4-1/2	2-1/32	3/4	5/8
SUCTP 211-35	2 3/16	2-1/2	8-5/8	6-23/32	2-3/8	1	25/32	7/8	4-15/16	2-3/16	7/8	5/8
SUCTP 212-39	2 7/16	2-3/4	9-1/2	7-1/4	2-3/4	1	25/32	1	5-7/16	2-3/16	7/8	5/8
Dimensions (mm)												
SUCTP 204	20	33.3	127	95	38	14	11	14.2	65	31.0	12.7	M10
SUCTP 205	25	36.5	140	105	38	14	11	14.2	71	34.1	14.3	M10
SUCTP 206	30	42.9	163	119	46	18	14	17.8	83	38.1	15.9	M14
SUCTP 207	35	47.6	168	128	48	18	14	18.0	94	42.9	17.5	M14
SUCTP 208	40	49.2	184	137	54	18	14	19.5	98	49.2	19.0	M14
SUCTP 209	45	54.0	190	146	54	20	17	20.0	106	49.2	19.0	M14
SUCTP 210	50	57.2	206	159	60	22	20	22.0	114	51.6	19.0	M16
SUCTP 211	55	63.5	219	171	60	22	20	22.0	125	55.6	22.2	M16
SUCTP 212	60	69.8	241	184	70	25	20	25.0	138	65.1	25.4	M16

SUCSF

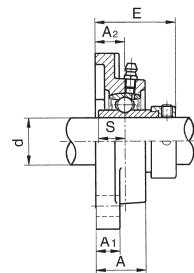
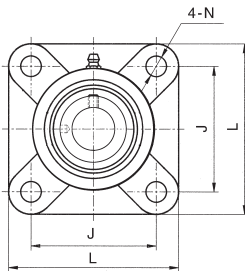
All Stainless Steel
four bolt flange units



Unit No.	Shaft dia d	Dimensions (inches)								Bolt Used
		L	J	A ₂	A ₁	A	N	E	S	
SUCSF 201-8	1/2	3-3/8	2-1/2	19/32	15/32	1	15/32	1-5/16	1/2	3/8
SUCSF 202-10	5/8	3-3/8	2-1/2	19/32	15/32	1	15/32	1-5/16	1/2	3/8
SUCSF 204-12	3/4	3-3/8	2-1/2	19/32	15/32	1	15/32	1-5/16	1/2	3/8
SUCSF 205-16	1	3-3/4	2-3/4	5/8	9/16	1-1/16	15/32	1-13/32	9/16	3/8
SUCSF 206-19	1 3/16	4-1/4	3-1/4	11/16	9/16	1-7/32	15/32	1-19/32	5/8	3/8
SUCSF 206-20	1 1/4	4-1/4	3-1/4	11/16	9/16	1-7/32	15/32	1-19/32	5/8	3/8
SUCSF 207-20	1 1/4	4-19/32	3-21/32	3/4	9/16	1-11/32	9/16	1-19/32	11/16	7/16
SUCSF 207-22	1 3/8	4-19/32	3-21/32	3/4	9/16	1-11/32	9/16	1-19/32	11/16	7/16
SUCSF 207-23	1 7/16	4-19/32	3-21/32	3/4	9/16	1-11/32	9/16	1-19/32	11/16	7/16
SUCSF 208-24	1 1/2	5-1/8	4	13/16	9/16	1-13/32	5/8	1-3/4	3/4	1/2
SUCSF 209-28	1 3/4	5-3/8	4-1/8	7/8	9/16	1-1/2	5/8	2	3/4	1/2
SUCSF 210-31	1 15/16	5-5/8	4-3/8	7/8	19/32	1-9/16	5/8	2-1/16	3/4	1/2
SUCSF 210-32	2	5-5/8	4-3/8	7/8	19/32	1-9/16	5/8	2-1/16	3/4	1/2
SUCSF 211-35	2 3/16	6-3/8	5-1/8	1	11/16	1-11/16	3/4	2-1/8	7/8	5/8
SUCSF 212-39	2 7/16	6-7/8	5-5/8	1-1/8	11/16	1-7/8	3/4	2-9/32	1	5/8
Dimensions (mm)										
SUCSF 204	20	86	64	15	12	25.5	12	33.3	12.7	M10
SUCSF 205	25	95	70	16	14	27	12	35.8	14.3	M10
SUCSF 206	30	108	83	18	14	31	12	40.2	15.9	M14
SUCSF 207	35	117	92	19	14.3	34	14	44.4	17.5	M14
SUCSF 208	40	130	102	21	14.3	36	16	51.2	19.0	M14
SUCSF 209	45	137	105	22	14.3	38	16	52.2	19.0	M14
SUCSF 210	50	143	110	22	15.1	40	16	54.6	19.0	M16
SUCSF 211	55	162	130	25	18	43	19	58.4	22.2	M16
SUCSF 212	60	175	143	29	18	48	19	68.7	25.4	M16

SUCTF

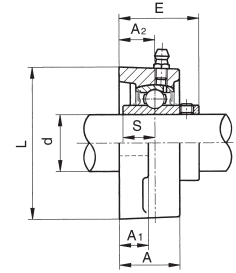
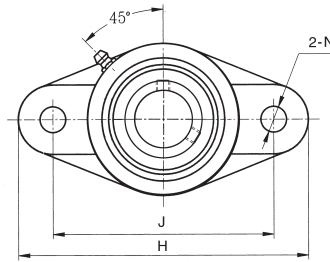
Thermoplastic four bolt flange units
with Stainless Steel bearings



Unit No.	Shaft dia d	Dimensions (inches)								Bolt Used
		L	J	A ₂	A ₁	A	N	E	S	
SUCTF 201-8	1/2	3-3/8	2-1/2	1/2	17/32	1-3/32	7/16	1-7/16	1/2	3/8
SUCTF 202-10	5/8	3-3/8	2-1/2	1/2	17/32	1-3/32	7/16	1-7/16	1/2	3/8
SUCTF 204-12	3/4	3-3/8	2-1/2	1/2	17/32	1-3/32	7/16	1-7/16	1/2	3/8
SUCTF 205-16	1	3-3/4	2-3/4	9/16	9/16	1-3/32	7/16	1-7/16	9/16	3/8
SUCTF 206-19	1 3/16	4-7/32	3-1/4	5/8	9/16	1-1/4	7/16	1-5/8	5/8	3/8
SUCTF 206-20	1 1/4	4-7/32	3-1/4	5/8	9/16	1-1/4	7/16	1-5/8	5/8	3/8
SUCTF 207-20	1 1/4	4-21/32	3-21/32	11/16	5/8	1-3/8	1/2	1-27/32	11/16	7/16
SUCTF 207-22	1 3/8	4-21/32	3-21/32	11/16	5/8	1-3/8	1/2	1-27/32	11/16	7/16
SUCTF 207-23	1 7/16	4-21/32	3-21/32	11/16	5/8	1-3/8	1/2	1-27/32	11/16	7/16
SUCTF 208-24	1 1/2	5-1/8	4	3/4	21/32	1-15/32	9/16	2-3/32	3/4	1/2
SUCTF 209-28	1 3/4	5-3/8	4-1/8	7/8	21/32	1-1/2	5/8	2-3/32	3/4	1/2
SUCTF 210-31	1 15/16	5-5/8	4-3/8	7/8	21/32	1-9/16	5/8	2-1/8	3/4	1/2
SUCTF 210-32	2	5-5/8	4-3/8	7/8	21/32	1-9/16	5/8	2-1/8	3/4	1/2
SUCTF 211-35	2 3/16	6-3/8	5-1/8	1	3/4	1-11/16	3/4	2-9/32	7/8	5/8
SUCTF 212-39	2 7/16	6-7/8	5-5/8	1-1/8	3/4	1-7/8	3/4	2-11/16	1	5/8
Dimensions (mm)										
SUCTF 204	20	86	63.5	12.7	13.4	27.8	11	36.3	12.7	M10
SUCTF 205	25	95	70	14.3	14.0	28.0	11	36.7	14.3	M10
SUCTF 206	30	107	83	15.9	14.3	31.5	11	41.4	15.9	M14
SUCTF 207	35	118	92	17.9	15.5	34.8	13	46.9	17.5	M14
SUCTF 208	40	130	102	19.0	17.0	37.5	14	53.2	19.0	M14
SUCTF 209	45	137	105	22.0	16.0	38.0	16	52.2	19.0	M14
SUCTF 210	50	143	111	22.0	16.0	40.0	16	54.6	19.0	M16
SUCTF 211	55	162	130	25.0	18.0	43.0	19	58.4	22.2	M16
SUCTF 212	60	175	143	29.0	18.0	48.0	19	68.7	25.4	M16

SUCSFL

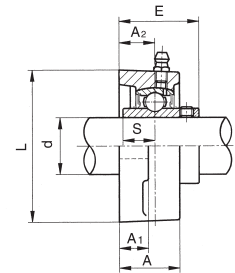
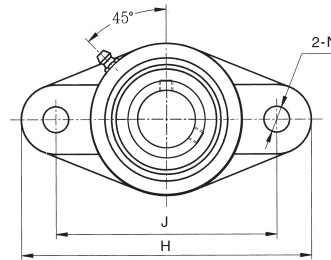
All Stainless Steel
two bolt flange units



Unit No.	Shaft dia d	Dimensions (inches)									Bolt used
		H	J	A2	A1	A	N	L	E	S	
SUCSFL 201-8	1/2	4-7/16	3-17/32	19/32	15/32	1	15/32	2-3/8	1-5/16	1/2	3/8
SUCSFL 202-10	5/8	4-7/16	3-17/32	19/32	15/32	1	15/32	2-3/8	1-5/16	1/2	3/8
SUCSFL 204-12	3/4	4-7/16	3-17/32	19/32	15/32	1	15/32	2-3/8	1-5/16	1/2	3/8
SUCSFL 205-16	1	5-1/8	3-7/8	5/8	9/16	1-1/16	5/8	2-21/32	1-13/32	9/16	1/2
SUCSFL 206-19	1 3/16	5-13/16	4-19/32	11/16	9/16	1-7/32	5/8	3-5/32	1-19/32	5/8	1/2
SUCSFL 206-20	1 1/4	5-13/16	4-19/32	11/16	9/16	1-7/32	5/8	3-5/32	1-19/32	5/8	1/2
SUCSFL 207-20	1 1/4	6-5/16	5-1/8	3/4	5/8	1-11/32	5/8	3-17/32	1-3/4	11/16	1/2
SUCSFL 207-22	1 3/8	6-5/16	5-1/8	3/4	5/8	1-11/32	5/8	3-17/32	1-3/4	11/16	1/2
SUCSFL 207-23	1 7/16	6-5/16	5-1/8	3/4	5/8	1-11/32	5/8	3-17/32	1-3/4	11/16	1/2
SUCSFL 208-24	1 1/2	6-7/8	5-21/32	13/16	5/8	1-13/32	5/8	3-15/16	2	3/4	1/2
SUCSFL 209-28	1 3/4	7-13/32	5-3/16	7/8	11/16	1-1/2	3/4	4-1/4	2-1/16	3/4	5/8
SUCSFL 210-31	1 15/16	7-3/4	6-3/16	7/8	11/16	1-9/16	3/4	4-1/2	2-1/8	3/4	5/8
SUCSFL 210-32	2	7-3/4	6-3/16	7/8	11/16	1-9/16	3/4	4-1/2	2-1/8	3/4	5/8
Dimensions (mm)											
SUCSFL 204	20	113	90	15	12	25.5	12	60	33.3	12.7	M10
SUCSFL 205	25	130	99	16	14	27	16	68	35.8	14.3	M10
SUCSFL 206	30	148	117	18	14	31	16	80	40.2	15.9	M14
SUCSFL 207	35	161	130	19	16	34	16	90	44.4	17.5	M14
SUCSFL 208	40	175	144	21	16	36	16	100	51.2	19.0	M14
SUCSFL 209	45	188	148	22	18	38	19	108	52.2	19.0	M14
SUCSFL 210	50	197	157	22	18	40	19	115	54.6	19.0	M16

SUCTFL

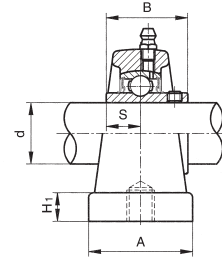
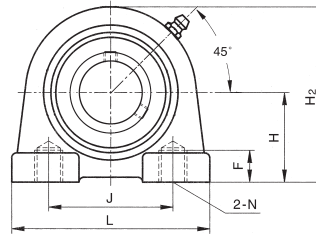
Thermoplastic two bolt flange units
with Stainless Steel bearings



Unit No.	Shaft dia d	Dimensions (inches)									Bolt used
		H	J	A2	A1	A	N	L	E	S	
SUCTFL 201-8	1/2	4-7/16	3-17/32	19/32	7/16	1-1/32	7/16	2-1/2	1-5/16	1/2	3/8
SUCTFL 202-10	5/8	4-7/16	3-17/32	19/32	7/16	1-1/32	7/16	2-1/2	1-5/16	1/2	3/8
SUCTFL 204-12	3/4	4-7/16	3-17/32	19/32	7/16	1-1/32	7/16	2-1/2	1-5/16	1/2	3/8
SUCTFL 205-16	1	5-1/8	3-7/8	21/32	17/32	1-1/8	7/16	2-23/32	1-7/16	9/16	3/8
SUCTFL 206-19	1 3/16	5-13/16	4-19/32	3/4	1/2	1-3/16	7/16	3-5/32	1-19/32	5/8	3/8
SUCTFL 206-20	1 1/4	5-13/16	4-19/32	3/4	1/2	1-3/16	7/16	3-5/32	1-19/32	5/8	3/8
SUCTFL 207-20	1 1/4	6-15/32	5-1/8	11/16	5/8	1-9/32	1/2	3-17/32	1-3/4	11/16	1/2
SUCTFL 207-22	1 3/8	6-15/32	5-1/8	11/16	5/8	1-9/32	1/2	3-17/32	1-3/4	11/16	1/2
SUCTFL 207-23	1 7/16	6-15/32	5-1/8	11/16	5/8	1-9/32	1/2	3-17/32	1-3/4	11/16	1/2
SUCTFL 208-24	1 1/2	6-29/32	5-21/32	27/32	25/32	1-15/32	9/16	3-15/16	2	3/4	1/2
SUCTFL 209-28	1 3/4	7-13/32	5-13/16	7/8	25/32	1-1/2	3/4	4-1/4	2-1/16	3/4	5/8
SUCTFL 210-31	1 15/16	7-3/4	6-3/16	7/8	25/32	1-9/16	3/4	4-1/2	2-1/8	3/4	5/8
SUCTFL 210-32	2	7-3/4	6-3/16	7/8	25/32	1-9/16	3/4	4-1/2	2-1/8	3/4	5/8
Dimensions (mm)											
SUCTFL 204	20	113	90	15.4	11.4	26.5	11	64	33.7	12.7	M10
SUCTFL 205	25	130	99	17.0	13.5	29.1	11	69	36.7	14.3	M10
SUCTFL 206	30	148	117	19.0	13.3	30.5	11	80	40.2	15.9	M14
SUCTFL 207	35	164	130	18.0	16.1	32.8	13	90	44.4	17.5	M14
SUCTFL 208	40	176	144	21.5	20.0	37.8	14	100	51.2	19.0	M14
SUCTFL 209	45	188	148	22.0	20.0	38.0	19	108	52.2	19.0	M14
SUCTFL 210	50	197	157	22.0	20.0	40.0	19	115	54.6	19.0	M16

SUCSPA

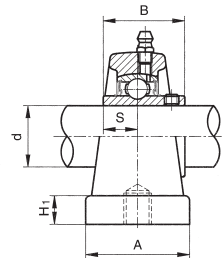
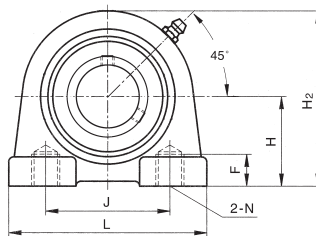
All Stainless Steel tapped base pillow block units



Unit No.	Shaft dia d	Dimensions (inches)								Bolt used
		H	L	J	A	H ₂	H ₁	B	S	
SUCSPA 201-8	1/2	1-5/16	2-7/8	2	1-11/32	2-19/32	1/2	1-7/32	1/2	5/16-18
SUCSPA 202-10	5/8	1-5/16	2-7/8	2	1-11/32	2-19/32	1/2	1-7/32	1/2	5/16-18
SUCSPA 204-12	3/4	1-5/16	2-7/8	2	1-11/32	2-19/32	1/2	1-7/32	1/2	5/16-18
SUCSPA 205-16	1	1-7/16	3	2	1-9/16	2-29/32	21/32	1-11/32	9/16	3/8-16
SUCSPA 206-19	1 3/16	1-11/16	4	3	1-21/32	3-5/16	21/32	1-1/2	5/8	7/16-14
SUCSPA 206-20	1 1/4	1-11/16	4	3	1-21/32	3-5/16	21/32	1-1/2	5/8	7/16-14
SUCSPA 207-20	1 1/4	1-7/8	4-5/16	3-1/4	1-7/8	3-3/4	21/32	1-11/16	11/16	1/2-13
SUCSPA 207-22	1 3/8	1-7/8	4-5/16	3-1/4	1-7/8	3-3/4	21/32	1-11/16	11/16	1/2-13
SUCSPA 207-23	1 7/16	1-7/8	4-5/16	3-1/4	1-7/8	3-3/4	21/32	1-11/16	11/16	1/2-13
SUCSPA 208-24	1 1/2	1-15/16	4-23/32	3-1/2	1-7/8	4	21/32	1-15/16	3/4	1/2-13
SUCSPA 209-28	1 3/4	2-1/8	5	3-3/4	2-1/8	4-1/4	21/32	1-15/16	3/4	1/2-13
SUCSPA 210-31	1 15/16	2-1/4	5-1/2	4	2-3/8	4-19/32	25/32	2-1/32	3/4	5/8-11
SUCSPA 210-32	2	2-1/4	5-1/2	4	2-3/8	4-19/32	25/32	2-1/32	3/4	5/8-11
		Dimensions (mm)								
SUCSPA 204	20	33.3	72.8	50.8	34.5	66	13	31.0	12.7	M8
SUCSPA 205	25	36.5	76.2	50.8	39.5	74	13	34.1	14.3	M10
SUCSPA 206	30	42.9	101.0	76.2	42.5	84	17	38.1	15.9	M12
SUCSPA 207	35	47.6	110.0	82.6	47.5	95	17	42.9	17.5	M12
SUCSPA 208	40	49.2	120.0	88.9	48.0	101	17	49.2	19.0	M12
SUCSPA 209	45	54.0	127.0	95.3	54.0	108	17	49.2	19.0	M12
SUCSPA 210	50	57.2	140.0	101.6	60.0	117	20	51.6	19.0	M12

SUCTPA

Thermoplastic tapped base pillow block units with Stainless Steel bearings

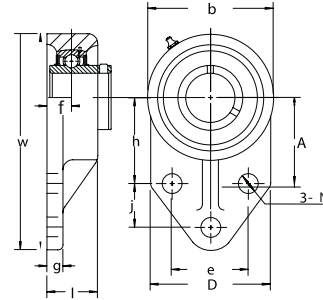


Unit No.	Shaft dia d	Dimensions (inches)								Bolt used
		H	L	J	A	H ₂	H ₁	B	S	
SUCTPA 201-8	1/2	1-5/16	2-7/8	2	1-11/32	2-19/32	1/2	1-7/32	1/2	5/16-18
SUCTPA 202-10	5/8	1-5/16	2-7/8	2	1-11/32	2-19/32	1/2	1-7/32	1/2	5/16-18
SUCTPA 204-12	3/4	1-5/16	2-7/8	2	1-11/32	2-19/32	1/2	1-7/32	1/2	5/16-18
SUCTPA 205-16	1	1-7/16	3	2	1-9/16	2-29/32	21/32	1-11/32	9/16	3/8-16
SUCTPA 206-19	1 3/16	1-11/16	4	3	1-21/32	3-5/16	21/32	1-1/2	5/8	7/16-14
SUCTPA 206-20	1 1/4	1-11/16	4	3	1-21/32	3-5/16	21/32	1-1/2	5/8	7/16-14
SUCTPA 207-20	1 1/4	1-7/8	4-5/16	3-1/4	1-7/8	3-3/4	21/32	1-11/16	11/16	1/2-13
SUCTPA 207-22	1 3/8	1-7/8	4-5/16	3-1/4	1-7/8	3-3/4	21/32	1-11/16	11/16	1/2-13
SUCTPA 207-23	1 7/16	1-7/8	4-5/16	3-1/4	1-7/8	3-3/4	21/32	1-11/16	11/16	1/2-13
SUCTPA 208-24	1 1/2	1-15/16	4-23/32	3-1/2	1-7/8	4	21/32	1-15/16	3/4	1/2-13
SUCTPA 209-28	1 3/4	2-1/8	5	3-3/4	2-1/8	4-1/4	21/32	1-15/16	3/4	1/2-13
SUCTPA 210-31	1 15/16	2-1/4	5-1/2	4	2-3/8	4-19/32	25/32	2-1/32	3/4	5/8-11
SUCTPA 210-32	2	2-1/4	5-1/2	4	2-3/8	4-19/32	25/32	2-1/32	3/4	5/8-11
		Dimensions (mm)								
SUCTPA 204	20	33.3	72.8	50.8	34.5	66	13	31.0	12.7	M8
SUCTPA 205	25	36.5	76.2	50.8	39.5	74	13	34.1	14.3	M10
SUCTPA 206	30	42.9	101.0	76.2	42.5	84	17	38.1	15.9	M12
SUCTPA 207	35	47.6	110.0	82.6	47.5	95	17	42.9	17.5	M12
SUCTPA 208	40	49.2	120.0	88.9	48.0	101	17	49.2	19.0	M12
SUCTPA 209	45	54.0	127.0	95.3	54.0	108	17	49.2	19.0	M12
SUCTPA 210	50	57.2	140.0	101.6	60.0	117	20	51.6	19.0	M12

Alternative dimensions are available, for critical engineering or construction requirements please confirm these dimensions with your local Ringball branch. Specifications subject to change without notice.

SUCSFB

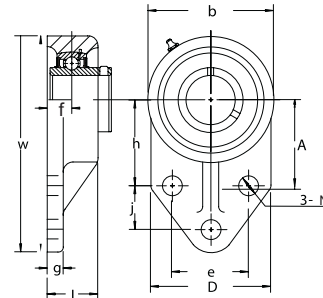
All Stainless Steel 3-Bolt flange units



Unit No.	Shaft dia d	Dimensions (inches)											Bolt used
		h	W	e	j	f	g	l	A	N	D	b	
SUCSFB 201-8	1/2	1-11/16	4-1/4	1-1/2	7/8	5/8	5/16	1	2-1/16	13/32	2-3/8	2-1/2	5/16
SUCSFB 202-10	5/8	1-11/16	4-1/4	1-1/2	7/8	5/8	5/16	1	2-1/16	13/32	2-3/8	2-1/2	5/16
SUCSFB 204-12	3/4	1-11/16	4-1/4	1-1/2	7/8	5/8	5/16	1	2-1/16	13/32	2-3/8	2-1/2	5/16
SUCSFB 205-16	1	1-13/16	4-25/32	1-5/8	1-1/8	11/16	3/8	1-1/16	2-1/16	13/32	2-17/32	2-25/32	5/16
SUCSFB 206-19	1 3/16	2-1/16	5-13/32	1-7/8	1-1/4	3/4	3/8	1-1/4	2-5/32	13/32	2-25/32	3-9/32	5/16
SUCSFB 206-20	1 1/4	2-1/16	5-13/32	1-7/8	1-1/4	3/4	3/8	1-1/4	2-5/32	13/32	2-25/32	3-9/32	5/16
SUCSFB 207-20	1 1/4	2-3/8	6-5/32	2	1-1/4	27/32	9/16	1-15/32	2-7/16	1/2	3-1/4	3-3/4	7/16
SUCSFB 207-22	1 3/8	2-3/8	6-5/32	2	1-1/4	27/32	9/16	1-15/32	2-7/16	1/2	3-1/4	3-3/4	7/16
SUCSFB 207-23	1 7/16	2-3/8	6-5/32	2	1-1/4	27/32	9/16	1-15/32	2-7/16	1/2	3-1/4	3-3/4	7/16
SUCSFB 208-24	1 1/2	2-11/32	6-15/32	1-31/32	1-5/8	27/32	5/8	1-11/32	2-27/32	7/16	3-1/16	3-15/16	3/8
SUCSFB 209-28	1 3/4	2-9/16	6-27/32	2-1/8	1-11/16	27/32	23/32	1-11/32	3	7/16	3-5/32	4-3/16	3/8
SUCSFB 210-31	1 15/16	2-15/16	7-17/32	2-3/4	1-5/8	27/32	23/32	1-1/2	3-1/4	1/2	4-1/32	4-21/32	3/8
SUCSFB 210-32	2	2-15/16	7-17/32	2-3/4	1-5/8	27/32	23/32	1-1/2	3-1/4	1/2	4-1/32	4-21/32	3/8
Dimensions (mm)													
SUCSFB 204	20	42.9	108	38.1	22.2	16	8.0	25.4	52	10	60	63	M8
SUCSFB 205	25	46.0	121	41.3	28.6	17	9.5	29.0	52	10	64	70	M8
SUCSFB 206	30	52.4	137	47.6	31.8	19	9.5	32.0	55	10	70	83	M8
SUCSFB 207	35	60.3	156	50.8	31.8	21	13.5	37.0	62	13	82.5	95	M8
SUCSFB 208	40	60.0	164	50.0	41.0	21	16.0	34.0	72	11	78	100	M10
SUCSFB 209	45	65.0	174	54.0	42.9	21	18.0	34.0	76	11	80	106	M10
SUCSFB 210	50	74.6	191	69.9	41.3	21	18.0	38.0	82	13	102	118	M10

SUCTFB

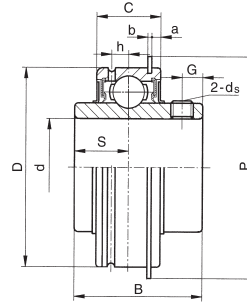
Thermoplastic 3-Bolt flange units with Stainless Steel bearings



Unit No.	Shaft dia d	Dimensions (inches)											Bolt used
		h	W	e	j	f	g	l	A	N	D	b	
SUCTFB 201-8	1/2	1-11/16	4-1/4	1-1/2	7/8	5/8	5/16	1	2-1/16	13/32	2-3/8	2-1/2	5/16
SUCTFB 202-10	5/8	1-11/16	4-1/4	1-1/2	7/8	5/8	5/16	1	2-1/16	13/32	2-3/8	2-1/2	5/16
SUCTFB 204-12	3/4	1-11/16	4-1/4	1-1/2	7/8	5/8	5/16	1	2-1/16	13/32	2-3/8	2-1/2	5/16
SUCTFB 205-16	1	1-13/16	4-25/32	1-5/8	1-1/8	11/16	3/8	1-1/16	2-1/16	13/32	2-17/32	2-25/32	5/16
SUCTFB 206-19	1 3/16	2-1/16	5-13/32	1-7/8	1-1/4	3/4	3/8	1-1/4	2-5/32	13/32	2-25/32	3-9/32	5/16
SUCTFB 206-20	1 1/4	2-1/16	5-13/32	1-7/8	1-1/4	3/4	3/8	1-1/4	2-5/32	13/32	2-25/32	3-9/32	5/16
SUCTFB 207-20	1 1/4	2-3/8	6-5/32	2	1-1/4	27/32	9/16	1-15/32	2-7/16	1/2	3-1/4	3-3/4	7/16
SUCTFB 207-22	1 3/8	2-3/8	6-5/32	2	1-1/4	27/32	9/16	1-15/32	2-7/16	1/2	3-1/4	3-3/4	7/16
SUCTFB 207-23	1 7/16	2-3/8	6-5/32	2	1-1/4	27/32	9/16	1-15/32	2-7/16	1/2	3-1/4	3-3/4	7/16
SUCTFB 208-24	1 1/2	2-11/32	6-15/32	1-31/32	1-5/8	27/32	5/8	1-11/32	2-27/32	7/16	3-1/16	3-15/16	3/8
SUCTFB 209-28	1 3/4	2-9/16	6-27/32	2-1/8	1-11/16	27/32	23/32	1-11/32	3	7/16	3-5/32	4-3/16	3/8
SUCTFB 210-31	1 15/16	2-15/16	7-17/32	2-3/4	1-5/8	27/32	23/32	1-1/2	3-1/4	1/2	4-1/32	4-21/32	3/8
SUCTFB 210-32	2	2-15/16	7-17/32	2-3/4	1-5/8	27/32	23/32	1-1/2	3-1/4	1/2	4-1/32	4-21/32	3/8
Dimensions (mm)													
SUCTFB 204	20	42.9	108	38.1	22.2	16	8.0	25.4	52	10	60	63	M8
SUCTFB 205	25	46.0	121	41.3	28.6	17	9.5	29.0	52	10	64	70	M8
SUCTFB 206	30	52.4	137	47.6	31.8	19	9.5	32.0	55	10	70	83	M8
SUCTFB 207	35	60.3	156	50.8	31.8	21	13.5	37.0	62	13	82.5	95	M8
SUCTFB 208	40	60.0	164	50.0	41.0	21	16.0	34.0	72	11	78	100	M10
SUCTFB 209	45	65.0	174	54.0	42.9	21	18.0	34.0	76	11	80	106	M10
SUCTFB 210	50	74.6	191	69.9	41.3	21	18.0	38.0	82	13	102	118	M10

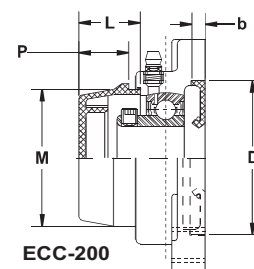
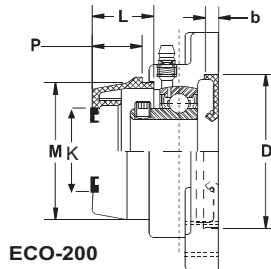
SSER

Stainless Steel insert bearings with snap ring



Unit No.	Shaft dia d	Dimensions (inches)										Setscrew ds
		D	B	C	S	S ₁	G	P	h	b	a	
SSER 201-8	1/2	1.8504	1.2205	0.6299	0.5000	0.7205	0.1969	2.0669	0.1575	0.0421	0.0937	M6x 0.75
SSER 202-10	5/8	1.8504	1.2205	0.6299	0.5000	0.7205	0.1969	2.0669	0.1575	0.0421	0.0937	M6x 0.75
SSER 204-12	3/4	1.8504	1.2205	0.6299	0.5000	0.7205	0.1969	2.0669	0.1575	0.0421	0.0937	M6x 0.75
SSER 205-16	1	2.0472	1.3425	0.6693	0.5630	0.7795	0.1969	2.2716	0.1772	0.0421	0.0937	M6x 0.75
SSER 206-19	1 3/16	2.4409	1.5000	0.7480	0.6260	0.8740	0.1969	2.6575	0.2165	0.0650	0.1252	M8x 1.0
SSER 206-20	1 1/4	2.4409	1.5000	0.7480	0.6260	0.8740	0.1969	2.6575	0.2165	0.0650	0.1252	M8x 1.0
SSER 207-20	1 1/4	2.8346	1.6890	0.7874	0.6890	1.0000	0.2756	3.0866	0.2559	0.0650	0.1252	M8x 1.0
SSER 207-22	1 3/8	2.8346	1.6890	0.7874	0.6890	1.0000	0.2756	3.0866	0.2559	0.0650	0.1252	M8x 1.0
SSER 207-23	1 7/16	2.8346	1.6890	0.7874	0.6890	1.0000	0.2756	3.0866	0.2559	0.0650	0.1252	M8x 1.0
SSER 208-24	1 1/2	3.1496	1.9370	0.8661	0.7480	1.1890	0.3150	3.4016	0.3150	0.0650	0.1252	M8x 1.0
SSER 209-28	1 3/4	3.3465	1.9370	0.8661	0.7480	1.1890	0.3150	3.5984	0.3150	0.0650	0.1252	M8x 1.0
SSER 210-31	1 15/16	3.5433	2.0315	0.9449	0.7480	1.2835	0.3937	3.7913	0.2559	0.0949	0.1252	M10x 1.25
SSER 210-32	2	3.5433	2.0315	0.9449	0.7480	1.2835	0.3937	3.7913	0.2559	0.0949	0.1252	M10x 1.25
SSER 211-35	2 3/16	3.9370	2.1890	0.9843	0.8740	1.3150	0.3937	4.1850	0.2953	0.0949	0.1252	M10x 1.25
SSER 212-39	2 7/16	4.3307	2.5630	1.0670	1.0000	1.5630	0.3937	4.5827	0.3346	0.0949	0.1252	M10x 1.25
		Dimensions (mm)										
SSER 204	20	47	31.0	17	12.7	18.3	5	52.5	4.0	1.07	2.38	M6x 0.75
SSER 205	25	52	34.1	17	14.3	19.8	5	57.7	4.5	1.07	2.38	M6x 0.75
SSER 206	30	62	38.1	19	15.9	22.2	5	67.5	5.5	1.65	3.18	M8x 1.0
SSER 207	35	72	42.9	20	17.5	25.4	7	78.4	6.5	1.65	3.18	M8x 1.0
SSER 208	40	80	49.2	22	19.0	30.2	8	86.4	8.0	1.65	3.18	M8x 1.0
SSER 209	45	85	49.2	22	19.0	30.2	8	91.4	8.0	1.65	3.18	M10x 1.25
SSER 210	50	90	51.6	24	19.0	32.6	10	96.3	6.5	2.41	3.18	M10x 1.25
SSER 211	55	100	55.6	25	22.2	33.4	10	106.3	7.5	2.41	3.18	M10x 1.25
SSER 212	60	110	65.1	27	25.4	39.7	10	116.4	8.5	2.41	3.18	M10x 1.25

Thermoplastic Cover and Back Seal for Thermoplastic Units



Cap No.	Shaft Diameter mm inch	Dimensions (mm)					
		P	L	M	D	b	K
ECC201/ECO201	12 1/2	18.7	23	50	52	6	32
ECC201/ECO202	15 5/8	18.7	23	50	52	6	32
ECC201/ECO203	17	18.7	23	50	52	6	32
ECC201/ECO204	20 3/4	18.7	23	50	52	6	32
ECC205/ECO205	25 1	20.7	25	55	62	6	37
ECC206/ECO206	30 1-3/16, 1-1/4	25.7	30	64	72	6	42
ECC207/ECO207	35 1-1/4, 1-3/8, 1-7/16	26.9	32	74.5	82	6	47
ECC208/ECO208	40 1-1/2	32.7	37	84	88	6	51
ECC209/ECO209	45 1-3/4	35.9	41	89	93	6	53
ECC210/ECO210	50 1-15/16, 2	42.0	47	94	98	6	62

INTERCHANGE TABLE BY MANUFACTURER

RBL	AMI	BROWNING	FYH	MRC/SKF	KML
SUCSP205-16	MUCP205-16	SPS-S 216	UCSP205-16S6H1	SPB100SS	SSP205-16
SUCSPA205-16	MUCTB205-16	STBS-S 216	UCPAN205-16S6H1	STB100SS	SSPA205-16
SUCSF205-16	MUCF205-16	SF4S-S216	UCSF205-16S6H1	S4F100SS	SSF205-16
SUCSFL205-16	MUCFL205-16	SF2S-S216	UCSFL205-16S6H1	S2F100SS	SSFL205-16
SUCSFB205-16	MUCFB205-16		UCSFB205-16S6H1		SSFB205-16
SUCTP205-16	MUCPPL205-16	CSP-S 216	UCP205-16S6PL	CPB100SSG	TPP205-16
SUCTPA205-16	MUCTBL205-16	CTBS-S216	UCPAN205-16S6PL	CTB100SSG	TPTB205-16
SUCTF205-16	MUCFPL205-16	CF4S-S216	UCF205-16S6PL	C4F100SSG	TPF205-16
SUCTFL205-16	MUCNFL205-16	CF2S-S216	UCFL205-16S6PL	C2F100SSG	TPFL205-16
SUCTFB205-16	MUCFBL205-16		UCFB205-16S6PL		TPFB205-16
SUC205-16	MUC205-16	VS-S216	UC205-16S6		SSUC205-16
SSER205-16	MSER205-16		ER205-16S6		

Interchanges are for comparison only. Dimensions may vary

CHEMICAL RESISTANCE

Anti-Corrosion Feature Against Main Acids			Bearing SUS440C		Housing SCS13	
Kind of Acid	Density (%)	Temp (°F)	13Cr Stainless Steel	18Cr Stainless Steel	18-8 Stainless Steel	18-12Mo Stainless Steel
HYDROCHLORIC ACID	0.1	68-125	▲	▲	▲	●
	1	68	×	×	▲	●
	2	68	×	×	×	▲
	10	68-95	×	×	×	×
SULFURIC ACID	.05	68	×	▲	●	●
	0.5	212	×	×	×	▲
	5	68	×	×	▲	●
	10	68-95	×	×	×	●
	50	68-86	×	×	×	×
	70	68-95	×	×	×	×
	98	86	▲	▲	●	●
NITRIC ACID	1	68-125	●	●	●	●
	5	185-212	▲	●	●	●
	50	212	×	▲	●	▲
	65	212	×	×	▲	▲
ACETIC ACID	1	212	▲	●	●	●
	10	68	▲	▲	●	●
	50	68-125	×	▲	●	●
	80	68	×	▲	●	●
	100	212	×	×	×	●

NOTE: (1) ● Depth of corrosion 0.1 mm/year or less.....Good.
 ▲ Depth of corrosion 0.1 - 1.0mm/year.....Usage depends on conditions.
 × Depth of corrosion more than 1.0mm/year.....No-good.

(2) In all cases, stainless steel mounted units shall not be used in applications where units are submersed in acids.



RBL

Vancouver

7880 Fraser Park Drive
Burnaby, BC
V5J 5L8
T: (604) 294-3461
F: (604) 294-4680
E: vancouver@ringball.com

Edmonton

7606 McIntyre Road, N.W.
Edmonton, AB
T6E 6Z1
T: (780) 465-3311
F: (780) 490-4664
E: edmonton@ringball.com

Winnipeg

190 Omads Creek Blvd.
Winnipeg, MB
R2R 1V7
T: (204) 694-1455
F: (204) 633-7230
E: winnipeg@ringball.com

Toronto - H.O.

2160 Meadowpine Blvd.
Mississauga, ON
L5N 6H6
T: (905) 826-1100
F: (905) 826-9691
E: toronto@ringball.com

Montreal

2205 rue de l'Aviation
Dorval, QC
H9P 2X6
T: (514) 685-6006
F: (514) 685-6007
E: montreal@ringball.com

VISIT OUR WEBSITE: www.ringball.com