

Catalogue No. REB2006

RBL

ROD END BEARINGS



PTDA

 **ringball**
corporation



Page #
3 Part Numbers & Options

<u>Rod Ends Series</u>	Description
4 RM_SB / RF_SB	3 Pc-Commercial (Sintered Bronze Liner)
5 RM / RF	3 Pc - Precision (Brass Liner)
6 RJM	3 Pc - Precision (Alloy Steel Liner)
7 RJF	3 Pc - Precision (Alloy Steel Liner)
8 RCM / RCF	2 Pc - Metal to Metal
9 RCM_T / RCF_T	2 Pc - Metal to Metal Self-Lubricating (PTFE Liner)
10 RSCM_T / RSCM_T	2 Pc - Stainless Steel Self-Lubricating(PTFE Liner)
11 RNJM / RJNF	3 Pc - Wear Resistant (Plastic Liner)

Spherical Bearings

12 COM / HCOM	Commercial Series
13 RK	Special Purpose
14 RKS	Heavy Duty Precision
15 RKSSX	Precision Series

Specialty Products

16 Special Purpose Rod Ends	Aluminum, Heavy Duty, Stainless Steel
16 Studs	Studded Rod Ends
17 Accessories	Solid Rod Eyes, Clevis Eyes, Jam Nuts

Additional Information

18 Engineering Data
19 Interchange Table



Series	Prefix Type	Thread Left / Right	/ Size	Suffix Optional Liner	Accessories
RC	M		8	SB	Z
RM_SB / RF_SB	M= Male F= Female	Right Thread= No Entry Left Thread = L	3= 3/16" 4= 1/4" 5= 5/16" 6= 3/8" 7=7/16" 8=1/2" 10=5/8" 12=3/4" 16=1"* (1 1/4"-12 Thread)	SB= Sintered Bronze T=Teflon (PTFE)	Z=Grease Zerk Y= Stud (See Pg 16)
RM / RF RJM / RJF					
RCM / RCF RCM_T / RCF_T RSCM_T / RSCM_T					
RNJM / RNJF			16-1=1" Ball ID 1"-14 Thread 16-2=1"Ball ID 1"-12 Thread		

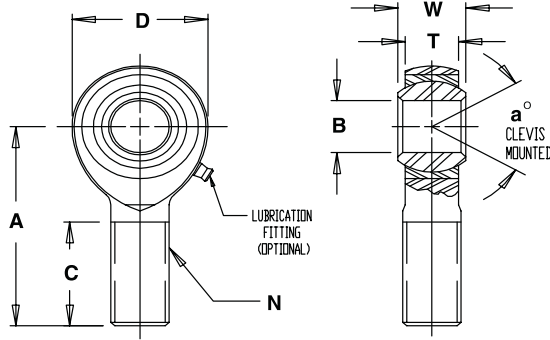
Spherical Bearings

Series	Size	Optional Liner
COM	8	T
COM	3= 3/16"	T= Teflon
HCOM	4= 1/4"	
RK	5= 5/16"	
RKS	6= 3/8"	
RKSSX	7=7/16" 8=1/2" 10=5/8" 12=3/4" 14=7/8" 16=1" 20= 1 1/4" 24= 1 1/2" 28=1 3/4" 32= 2"	



RM-SB / RF-SB

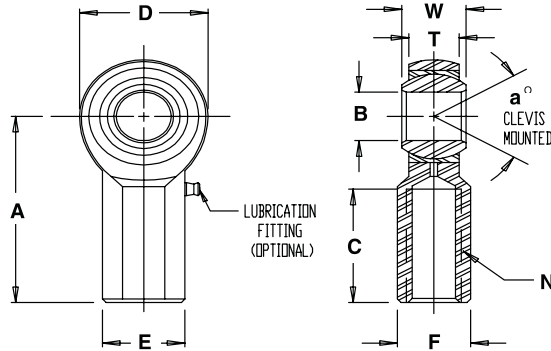
3-PIECE, COMMERCIAL, SINTERED BRONZE



MATERIALS

BALL	BODY
52100 STEEL	LOW CARBON STEEL
Rc 56 MIN. HARD	ZINC PLATED
HARD CHROME PLATED	CHROMATE TREATED
RACE	
SINTERED PHOSPHOR BRONZE	
OIL IMPREGNATED	

MALE ROD ENDS		B DIA.	D DIA.	W WIDTH	T WIDTH	BALL DIA.	A LGTH	N THD.	C LGTH	a° MIS ANGLE	ULT. STATIC RADIAL LOAD (lbs.)	APPROX. WEIGHT (lbs.)
RIGHT HAND PART NO.	LEFT HAND PART NO.	+0.0025 -0.0005	+0.010 -0.010	+0.005 -0.005	+0.015 -0.015	REF.	+0.015 -0.015	UNF 3A	+0.062 -0.031	REF.		
RM3SB	RML3SB	.1900	.625	.312	.250	.437	1.250	10-32	.750	13	1,174	.03
RM4SB	RML4SB	.2500	.750	.375	.281	.500	1.562	1/4-28	1.000	16	2,168	.04
RM5SB	RML5SB	.3125	.875	.437	.344	.625	1.875	5/16-24	1.250	14	2,796	.07
RM6SB	RML6SB	.3750	1.000	.500	.406	.719	1.938	3/8-24	1.250	12	4,012	.11
RM7SB	RML7SB	.4375	1.125	.562	.437	.812	2.125	7/16-20	1.375	14	4,244	.16
RM8SB	RML8SB	.5000	1.312	.625	.500	.937	2.438	1/2-20	1.500	12	6,700	.25
RM10SB	RML10SB	.6250	1.500	.750	.562	1.125	2.625	5/8-18	1.625	16	7,400	.38
RM12SB	RML12SB	.7500	1.750	.875	.687	1.312	2.875	3/4-16	1.750	14	11,550	.60



MALE ROD END LOAD RATINGS BASED ON NO LUBRICATING FITTING. FOR LOAD RATINGS WITH LUBRICATOR, PLEASE CONTACT THE RBL ENGINEERING DEPARTMENT.

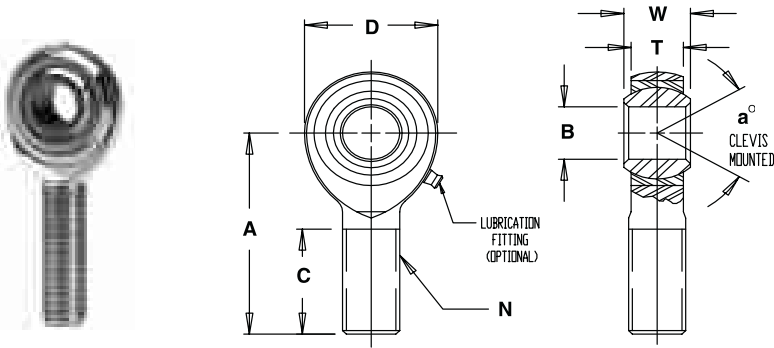
MATERIALS

BALL	BODY
52100 STEEL	LOW CARBON STEEL
Rc 56 MIN. HARD	ZINC PLATED
HARD CHROME PLATED	CHROMATE TREATED
RACE	
SINTERED PHOSPHOR BRONZE	
OIL IMPREGNATED	

FEMALE ROD ENDS		B DIA.	D DIA.	W WIDTH	T WIDTH	BALL DIA.	A LGTH	N THD.	C LGTH	E DIA.	F FLAT	a° MIS ANGLE	ULT. STATIC RADIAL LOAD (lbs.)	APPROX. WEIGHT (lbs.)
RIGHT HAND PART NO.	LEFT HAND PART NO.	+0.0025 -0.0005	+0.010 -0.010	+0.005 -0.005	+0.015 -0.015	REF.	+0.015 -0.015	UNF 2B	+0.062 -0.031	+0.010 -0.010	+0.010 -0.010	REF.		
RF3SB	RFL3SB	.1900	.625	.312	.250	.437	1.062	10-32	.500	.406	.312	13	1,624	.04
RF4SB	RFL4SB	.2500	.750	.375	.281	.500	1.312	1/4-28	.687	.468	.375	16	2,545	.06
RF5SB	RFL5SB	.3125	.875	.437	.344	.625	1.375	5/16-24	.687	.500	.437	14	3,200	.09
RF6SB	RFL6SB	.3750	1.000	.500	.406	.719	1.625	3/8-24	.812	.687	.562	12	3,950	.15
RF7SB	RFL7SB	.4375	1.125	.562	.437	.812	1.812	7/16-20	.937	.750	.625	14	4,300	.20
RF8SB	RFL8SB	.5000	1.312	.625	.500	.937	2.125	1/2-20	1.062	.875	.750	12	6,700	.33
RF10SB	RFL10SB	.6250	1.500	.750	.562	1.125	2.500	5/8-18	1.375	1.000	.875	16	7,400	.48
RF12SB	RFL12SB	.7500	1.750	.875	.687	1.312	2.875	3/4-16	1.562	1.125	1.000	14	11,550	.72

NOTES: FOR GREASE FITTINGS ADD "Z" TO SUFFIX. EXAMPLE: RM6SBZ
FOR STUDS ADD "Y" TO SUFFIX. EXAMPLE: RFL12SBY

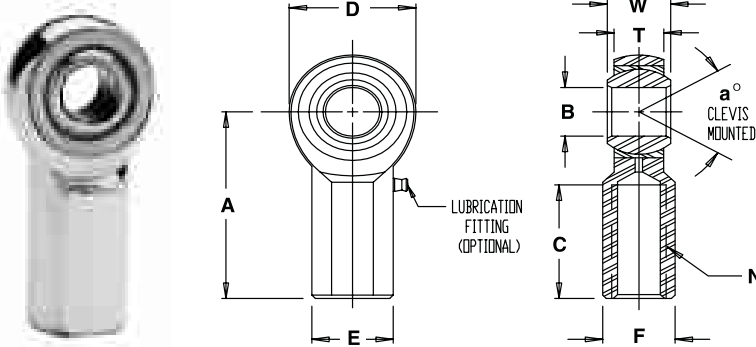
3-PIECE, PRECISION-BRASS



MATERIALS

BALL	BODY
52100 STEEL	LOW CARBON STEEL
Rc 56 MIN. HARD	ZINC PLATED
HARD CHROME PLATED	CHROMATE TREATED
RACE	
BRASS	

MALE ROD ENDS		B DIA.	D DIA.	W WIDTH	T WIDTH	BALL DIA.	A LGTH	N THD.	C LGTH	a° MIS ANGLE	ULT. STATIC RADIAL LOAD (lbs.)	APPROX. WEIGHT (lbs.)
RIGHT HAND PART NO.	LEFT HAND PART NO.	+0.015 -0.005	+0.010 -0.010	+0.005 -0.005	+0.015 -0.015	REF	+0.015 -0.015	UNF 3A	+0.062 -0.031	REF.		
RM3	RML3	.1900	.625	.312	.250	.437	1.250	10-32	.750	13	1,174	.03
RM4	RML4	.2500	.750	.375	.281	.500	1.562	1/4-28	1.000	16	2,168	.04
RM5	RML5	.3125	.875	.437	.344	.625	1.875	5/16-24	1.250	14	2,796	.07
RM6	RML6	.3750	1.000	.500	.406	.719	1.938	3/8-24	1.250	12	4,012	.11
RM7	RML7	.4375	1.125	.562	.437	.812	2.125	7/16-20	1.375	14	4,244	.16
RM8	RML8	.5000	1.312	.625	.500	.937	2.438	1/2-20	1.500	12	6,700	.25
RM10	RML10	.6250	1.500	.750	.562	1.125	2.625	5/8-18	1.625	16	7,400	.38
RM12	RML12	.7500	1.750	.875	.687	1.312	2.875	3/4-16	1.750	14	11,550	.60



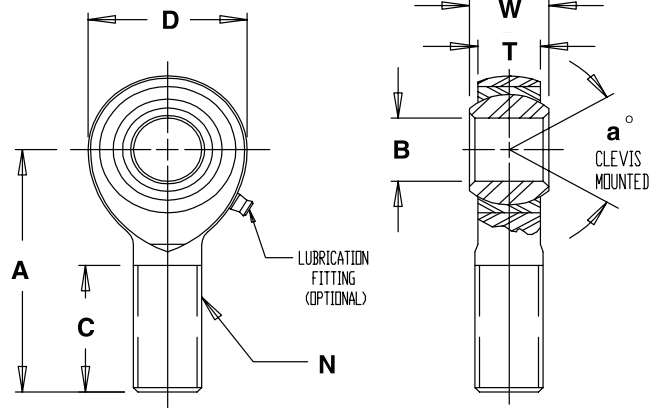
MALE ROD END LOAD RATINGS BASED ON NO LUBRICATING FITTING. FOR LOAD RATINGS WITH LUBRICATOR, PLEASE CONTACT THE RBL ENGINEERING DEPARTMENT.

MATERIALS

BALL	BODY
52100 STEEL	LOW CARBON STEEL
Rc 56 MIN. HARD	ZINC PLATED
HARD CHROME PLATED	CHROMATE TREATED
RACE	
BRASS	

FEMALE ROD ENDS		B DIA.	D DIA.	W WIDTH	T WIDTH	BALL DIA.	A LGTH	N THD.	C LGTH	E DIA.	F FLAT	a° MIS ANG.	ULT. STATIC RADIAL LOAD (lbs.)	APPROX. WEIGHT (lbs.)
RIGHT HAND PART NO.	LEFT HAND PART NO.	+0.015 -0.005	+0.010 -0.010	+0.005 -0.005	+0.015 -0.015	REF.	+0.015 -0.015	UNF 2B	+0.062 -0.031	+0.010 -0.010	+0.010 -0.010	REF.		
RF3	RFL3	.1900	.625	.312	.250	.437	1.062	10-32	.500	.406	.312	13	1,624	.04
RF4	RFL4	.2500	.750	.375	.281	.500	1.312	1/4-28	.687	.468	.375	16	2,545	.06
RF5	RFL5	.3125	.875	.437	.344	.625	1.375	5/16-24	.687	.500	.437	14	3,200	.09
RF6	RFL6	.3750	1.000	.500	.406	.719	1.625	3/8-24	.812	.687	.562	12	3,950	.15
RF7	RFL7	.4375	1.125	.562	.437	.812	1.812	7/16-20	.937	.750	.625	14	4,300	.20
RF8	RFL8	.5000	1.312	.625	.500	.937	2.125	1/2-20	1.062	.875	.750	12	6,700	.33
RF10	RFL10	.6250	1.500	.750	.562	1.125	2.500	5/8-18	1.375	1.000	.875	16	7,400	.48
RF12	RFL12	.7500	1.750	.875	.687	1.312	2.875	3/4-16	1.562	1.125	1.000	14	11,550	.72

NOTES: FOR GREASE FITTINGS ADD "Z" TO SUFFIX. EXAMPLE: RM8Z
FOR STUDS ADD "Y" TO SUFFIX. EXAMPLE: RF6Y



MALE ROD ENDS		B DIA.	D DIA.	W WIDTH	T WIDTH	BALL DIA.	A LGTH	N THD.	C LGTH	a° MIS ANGLE	ULT. STATIC RADIAL LOAD (lbs.)	APPROX. WEIGHT (lbs.)
RIGHT HAND PART NO.	LEFT HAND PART NO.	+0.0015 -0.0005	+0.010 -0.010	+0.000 -0.005	+0.015 -0.015	REF.	+0.015 -0.015	UNF 3A	+0.062 -0.031	REF.		
RJM2*	RJML2*	.1250	.500	.250	.187	.312	.937	6-32 UNC	.562	16	500	.013
RJM3	RJML3	.1900	.625	.312	.250	.437	1.250	10-32	.750	13	1,174	.03
RJM4	RJML4	.2500	.750	.375	.281	.500	1.562	1/4-28	1.000	16	2,168	.04
RJM5	RJML5	.3125	.875	.437	.344	.625	1.875	5/16-24	1.250	14	2,796	.07
RJM6	RJML6	.3750	1.000	.500	.406	.719	1.938	3/8-24	1.250	12	4,012	.11
RJM7	RJML7	.4375	1.125	.562	.437	.812	2.125	7/16-20	1.375	14	4,244	.16
RJM8	RJML8	.5000	1.312	.625	.500	.937	2.438	1/2-20	1.500	12	6,700	.25
RJM10	RJML10	.6250	1.500	.750	.562	1.125	2.625	5/8-18	1.625	16	7,400	.38
RJM12	RJML12	.7500	1.750	.875	.687	1.312	2.875	3/4-16	1.750	14	11,550	.60
RJM16**	RJML16**	1.0000	2.950	1.375	1.015	1.875	4.125	1-1/4-12	2.125	17	43,555	2.406
RJM16-1**	RJML16-1**	1.0000	2.950	1.375	1.015	1.875	4.125	1-14	2.125	17	43,555	2.127
RJM16-2**	RJML16-2**	1.0000	2.950	1.375	1.015	1.875	4.125	1-12	2.125	17	43,555	2.127

MALE ROD END LOAD RATINGS BASED ON NO LUBRICATION FITTING. FOR LOAD RATINGS OF ROD ENDS WITH LUBRICATOR, PLEASE CONTACT THE RBLENGINEERING DEPARTMENT.

*GREASE FITTINGS & PTFE LINERS NOT AVAILABLE.

** TOLERANCE VARIATION: "D", "A" ARE +/- .020

BALL	BODY
52100 STEEL	LOW CARBON STEEL
Rc 56 MIN. HARD	ZINC PLATED
HARD CHROME PLATED	CHROMATE TREATED
RACE	
STEEL ALLOY, HEAT TREATED	
ZINC PLATED, CHROMATE TREATED	

NOTES:

FOR GREASE FITTINGS ADD "Z" TO SUFFIX.

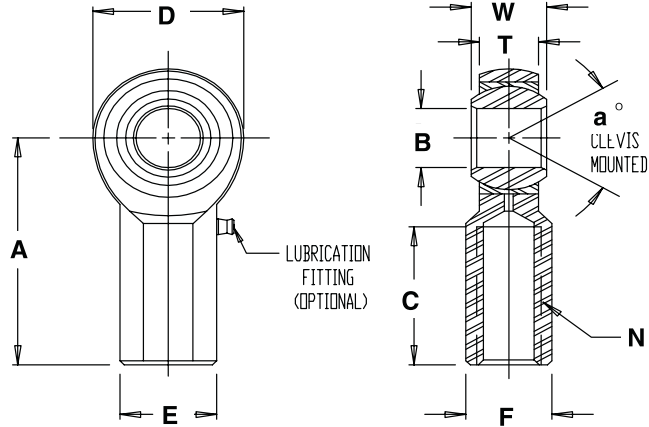
EXAMPLE: RJM6Z

FOR STUDS ADD "Y" TO SUFFIX.

EXAMPLE: RJM5Y

FOR TEFLON LINER ADD "T" TO SUFFIX.

EXAMPLE: RJM12T



FEMALE ROD ENDS		B DIA.	D DIA.	W WIDTH	T WIDTH	BALL DIA.	A LGTH	N THD.	C LGTH	E DIA.	F FLAT	a° MIS ANG.	ULT. STATIC RADIAL LOAD (lbs.)	APPROX. WEIGHT (lbs.)
RIGHT HAND PART NO.	LEFT HAND PART NO.	+0.0015 -0.0005	+0.010 -0.010	+0.000 -0.005	+0.015 -0.015	REF.	+0.015 -0.015	UNF 2B	+0.062 -0.031	+0.010 -0.010	+0.010 -0.010	REF.		
RJF2*	RJFL2*	.1250	.500	.250	.187	.312	.812	6-32UNC	.437	.312	.250	16	1,210	.019
RJF3	RJFL3	.1900	.625	.312	.250	.437	1.062	10-32	.500	.406	.312	13	1,624	.04
RJF4	RJFL4	.2500	.750	.375	.281	.500	1.312	1/4-28	.687	.469	.375	16	2,545	.06
RJF5	RJFL5	.3125	.875	.437	.344	.625	1.375	5/16-24	.687	.500	.437	14	3,200	.09
RJF6	RJFL6	.3750	1.000	.500	.406	.719	1.625	3/8-24	.812	.687	.562	12	3,950	.15
RJF7	RJFL7	.4375	1.125	.562	.437	.812	1.812	7/16-20	.937	.750	.625	14	4,300	.20
RJF8	RJFL8	.5000	1.312	.625	.500	.937	2.125	1/2-20	1.062	.875	.750	12	6,700	.33
RJF10	RJFL10	.6250	1.500	.750	.562	1.125	2.500	5/8-18	1.375	1.000	.875	16	7,400	.48
RJF12	RJFL12	.7500	1.750	.875	.687	1.312	2.875	3/4-16	1.562	1.125	1.000	14	11,550	.72
RJF16**	RJFL16**	1.0000	2.750	1.375	1.000	1.875	4.125	1-1/4-12	2.125	1.625	1.500	17	40,893	2.125
RJF16-1**	RJFL16-1**	1.0000	2.750	1.375	1.000	1.875	4.125	1-14	2.125	1.625	1.500	17	43,555	2.410
RJF16-2**	RJFL16-2**	1.0000	2.750	1.375	1.000	1.875	4.125	1-12	2.125	1.625	1.500	17	43,555	2.410

*GREASE FITTINGS & PTFE LINERS NOT AVAILABLE.

** TOLERANCE VARIATION: "D", "A" ARE +/- .020

NOTES:

FOR GREASE FITTINGS ADD "Z" TO SUFFIX.

EXAMPLE: RJF6Z

FOR STUDS ADD "Y" TO SUFFIX.

EXAMPLE: RJF5Y

FOR TEFLON LINER ADD "T" TO SUFFIX.

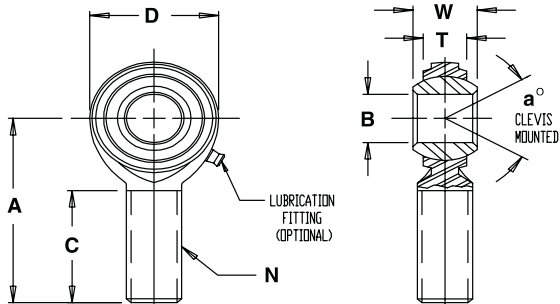
EXAMPLE: RJF12T

BALL	BODY
52100 STEEL	LOW CARBON STEEL
Rc 56 MIN. HARD	ZINC PLATED
HARD CHROME PLATED	CHROMATE TREATED
RACE	
STEEL ALLOY, HEAT TREATED	
ZINC PLATED, CHROMATE TREATED	



RCM / RCF

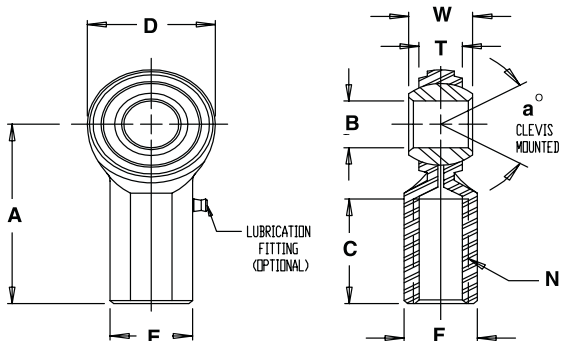
2-PIECE, METAL TO METAL



MATERIALS

BALL	BODY
52100 STEEL	LOW CARBON STEEL
Rc 56 MIN.	ZINC PLATED
HARD CHROME PLATED	CHROMATE TREATED

MALE ROD ENDS		B DIA.	D DIA.	W WIDTH	T WIDTH	BALL DIA.	A LGTH	N THD.	C LGTH	a° MIS. ANGLE	ULT. STATIC RADIAL LOAD (lbs.)	APPROX. WEIGHT (lbs.)
RIGHT HAND PART NO.	LEFT HAND PART NO.	+0.0025 -.0005	+0.010 -.010	+0.005 -.005	REF.	REF.	+0.015 -.015	UNF 3A	+0.062 -.031	REF.		
RCM3*	RCML3*	.1900	.625	.312	.234	.437	1.250	10-32	.750	20	1,210	.03
RCM4*	RCML4*	.2500	.750	.375	.250	.500	1.562	1/4-28	1.000	27	2,225	.04
RCM5*	RCML5*	.3125	.875	.437	.312	.625	1.875	5/16-24	1.250	22	3,600	.07
RCM6	RCML6	.3750	1.000	.500	.359	.719	1.938	3/8-24	1.250	22	5,100	.11
RCM7	RCML7	.4375	1.125	.562	.406	.812	2.125	7/16-20	1.375	21	6,402	.15
RCM8	RCML8	.5000	1.312	.625	.453	.937	2.438	1/2-20	1.500	20	8,386	.24
RCM10	RCML10	.6250	1.500	.750	.484	1.125	2.625	5/8-18	1.625	26	9,813	.36
RCM12	RCML12	.7500	1.750	.875	.593	1.312	2.875	3/4-16	1.750	24	14,290	.57



*GREASE FITTINGS ARE NOT SUPPLIED ON THESE SIZES.
 MALE ROD END LOAD RATINGS BASED ON NO LUBRICATING FITTING.
 FOR LOAD RATINGS WITH LUBRICATOR, PLEASE CONTACT THE
 RBL ENGINEERING DEPARTMENT.

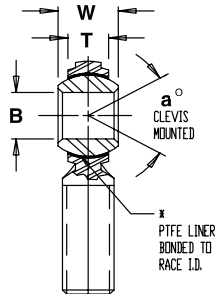
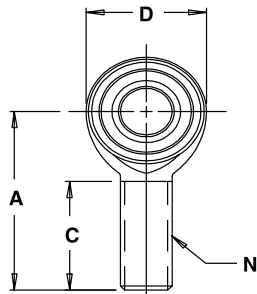
MATERIALS

BALL	BODY
52100 STEEL	LOW CARBON STEEL
Rc 56 MIN.	ZINC PLATED
HARD CHROME PLATED	CHROMATE TREATED

FEMALE ROD ENDS		B DIA.	D DIA.	W WIDTH	T WIDTH	BALL DIA.	A LGTH	N THD.	C LGTH	E DIA.	F FLAT	a° MIS. ANG.	ULT. STATIC RADIAL LOAD (lbs.)	APPROX. WEIGHT (lbs.)
RIGHT HAND PART NO.	LEFT HAND PART NO.	+0.0025 -.0005	+0.010 -.010	+0.005 -.005	REF.	REF.	+0.015 -.015	UNF 2B	+0.062 -.031	+0.010 -.010	+0.010 -.010	REF.		
RCF3*	RCFL3*	.1900	.625	.312	.234	.437	1.062	10-32	.500	.406	.312	20	2,100	.04
RCF4-3	N/A	.2500	.750	.375	.250	.500	1.312	10-32	.687	.468	.375	27	3,250	.05
RCF4	RCFL4	.2500	.750	.375	.250	.500	1.312	1/4-28	.687	.468	.375	27	3,250	.05
RCF5	RCFL5	.3125	.875	.437	.312	.625	1.375	5/16-24	.687	.500	.437	22	3,934	.08
RCF6	RCFL6	.3750	1.000	.500	.359	.719	1.625	3/8-24	.812	.687	.562	22	5,100	.13
RCF7	RCFL7	.4375	1.125	.562	.406	.812	1.812	7/16-20	.937	.750	.625	21	6,420	.18
RCF8	RCFL8	.5000	1.312	.625	.453	.937	2.125	1/2-20	1.062	.875	.750	20	9,100	.29
RCF10	RCFL10	.6250	1.500	.750	.484	1.125	2.500	5/8-18	1.375	1.000	.875	26	9,800	.43
RCF12	RCFL12	.7500	1.750	.875	.593	1.312	2.875	3/4-16	1.562	1.125	1.000	24	14,250	.65

NOTES: FOR GREASE FITTINGS ADD "Z" TO SUFFIX. EXAMPLE: RCF6Z

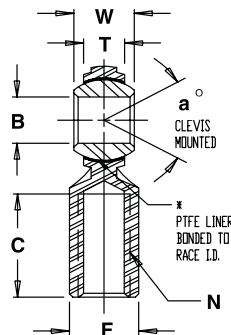
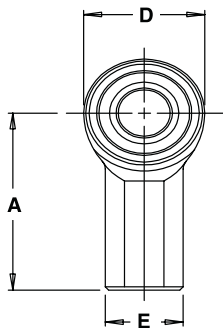
2-PIECE, SELF LUBRICATING



MATERIALS

BALL	BODY
52100 STEEL Rc 56 MIN. HARD CHROME PLATED	LOW CARBON STEEL ZINC PLATED CHROMATE TREATED
LINER	
*TEFLON FABRIC	

MALE ROD ENDS		B DIA.	D DIA.	W WIDTH	T WIDTH	BALL DIA.	A LGTH	N THD.	C LGTH	a° MIS. ANGLE	ULT. STATIC RADIAL LOAD (lbs.)	APPROX. WEIGHT (lbs.)
RIGHT HAND PART NO.	LEFT HAND PART NO.	+0.0025 -0.0005	+0.010 -0.010	+0.005 -0.005	REF.	REF.	+0.015 -0.015	UNF 3A	+0.062 -0.031	REF.		
RCM3T	RCML3T	.1900	.625	.312	.234	.437	1.250	10-32	.750	20	902	.03
RCM4T	RCML4T	.2500	.750	.375	.250	.500	1.562	1/4-28	1.000	27	1,809	.04
RCM5T	RCML5T	.3125	.875	.437	.312	.65	1.875	5/16-24	1.250	22	2,984	.07
RCM6T	RCML6T	.3750	1.000	.500	.359	.719	1.938	3/8-24	1.250	22	4,244	.11
RCM7T	RCML7T	.4375	1.125	.562	.406	.812	2.125	7/16-20	1.375	21	5,312	.15
RCM8T	RCML8T	.5000	1.312	.625	.453	.937	2.43	1/2-20	1.500	20	7,211	.24
RCM10T	RCML10T	.6250	1.500	.750	.484	1.125	2.625	5/8-18	1.625	26	8,403	.36
RCM12T	RCML12T	.7500	1.750	.875	.593	1.312	2.875	3/4-16	1.750	24	12,321	.57



MATERIALS

BALL	BODY
52100 STEEL Rc 56 MIN. HARD CHROME PLATED	LOW CARBON STEEL ZINC PLATED CHROMATE TREATED
LINER	
*TEFLON FABRIC	

FEMALE ROD ENDS		B DIA.	D DIA.	W WIDTH	T WIDTH	BALL DIA.	A LGTH	N THD.	C LGTH	E DIA.	F FLAT	a° MIS. ANG.	ULT. STATIC RADIAL LOAD (lbs.)	APPROX. WEIGHT (lbs.)
RIGHT HAND PART NO.	LEFT HAND PART NO.	+0.0025 -0.0005	+0.010 -0.010	+0.005 -0.005	REF.	REF.	+0.015 -0.015	UNF 2B	+0.062 -0.031	+0.010 -0.010	+0.010 -0.010	REF.		
RCF3T	RCFL3T	.1900	.625	.312	.234	.437	1.062	10-32	.500	.406	.312	20	1,637	.04
RCF4T	RCFL4T	.2500	.750	.375	.250	.500	1.312	1/4-28	.687	.468	.375	27	2,612	.05
RCF5T	RCFL5T	.3125	.875	.437	.312	.625	1.375	5/16-24	.687	.500	.437	22	3,110	.08
RCF6T	RCFL6T	.3750	1.000	.500	.359	.719	1.625	3/8-24	.812	.687	.562	22	4,206	.13
RCF7T	RCFL7T	.4375	1.125	.562	.406	.812	1.812	7/16-20	.937	.750	.625	21	5,384	.18
RCF8T	RCFL8T	.5000	1.312	.625	.453	.937	2.125	1/2-20	1.062	.875	.750	20	7,826	.29
RCF10T	RCFL10T	.6250	1.500	.750	.484	1.125	2.500	5/8-18	1.375	1.000	.875	26	8,343	.43
RCF12T	RCFL12T	.7500	1.750	.875	.593	1.312	2.875	3/4-16	1.562	1.125	1.000	24	12,342	.65

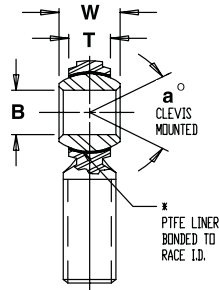
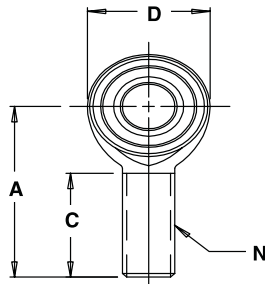
* A trade mark of E.I. Dupont de Nemours & Co., Inc.

NOTES: FOR STUD ADD "Y" TO SUFFIX.
EXAMPLE: RCM10TY



RSCM-T / RSCF-T

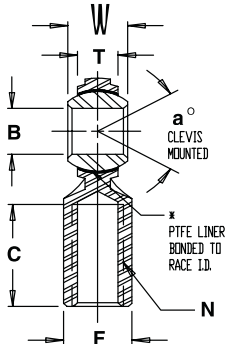
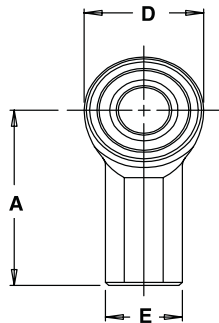
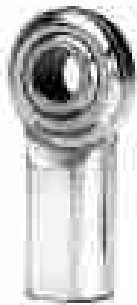
2-PIECE, STAINLESS STEEL SELF LUBRICATING



MATERIALS

BALL	BODY
440C STAINLESS STEEL HEAT TREATED	303 STAINLESS STEEL PASSIVATED
LINER	
*TEFLON FABRIC	

MALE ROD ENDS		B DIA.	D DIA.	W WIDTH	T WIDTH	BALL DIA.	A LGTH	N THD.	C LGTH	a° MIS. ANGLE	ULT. STATIC RADIAL LOAD (lbs.)	APPROX. WEIGHT (lbs.)
RIGHT HAND PART NO.	LEFT HAND PART NO.	+0.0025 -0.0005	+0.010 -0.010	+0.005 -0.005	REF.	REF.	+0.015 -0.015	UNF 3A	+0.062 -0.031	REF.		
RSCM3T	RSCML3T	.1900	.625	.312	.234	.437	1.250	10-32	.750	20	912	.03
RSCM4T	RSCML4T	.2500	.750	.375	.250	.500	1.562	1/4-28	1.000	27	1,370	.04
RSCM5T	RSCML5T	.3125	.875	.437	.312	.625	1.875	5/16-24	1.250	22	2,050	.07
RSCM6T	RSCML6T	.3750	1.000	.500	.359	.719	1.938	3/8-24	1.250	22	3,040	.11
RSCM7T	RSCML7T	.4375	1.125	.562	.406	.812	2.125	7/16-20	1.375	21	3,780	.15
RSCM8T	RSCML8T	.5000	1.312	.625	.453	.937	2.438	1/2-20	1.500	20	4,700	.24
RSCM10T	RSCML10T	.6250	1.500	.750	.484	1.125	2.625	5/8-18	1.625	26	5,860	.36
RSCM12T	RSCML12T	.7500	1.750	.875	.593	1.312	2.875	3/4-16	1.750	24	7,512	.57

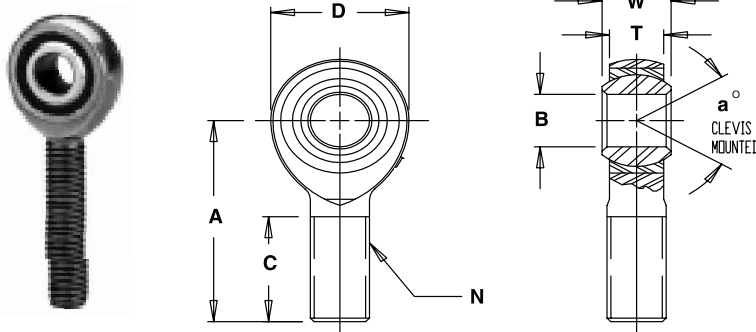


MATERIALS

BALL	BODY
440C STAINLESS STEEL HEAT TREATED	303 STAINLESS STEEL PASSIVATED
LINER	
*TEFLON FABRIC	

FEMALE ROD ENDS		B DIA.	D DIA.	W WIDTH	T WIDTH	BALL DIA.	A LGTH	N THD.	C LGTH	E DIA.	F FLAT	a° MIS. ANG.	ULT. STATIC RADIAL LOAD (lbs.)	APPROX. WEIGHT (lbs.)
RIGHT HAND PART NO.	LEFT HAND PART NO.	+0.0025 -0.0005	+0.010 -0.010	+0.005 -0.005	REF.	REF.	+0.015 -0.015	UNF 2B	+0.062 -0.031	+0.010 -0.010	+0.010 -0.010	REF.		
RSCF3T	RSCFL3T	.1900	.625	.312	.234	.437	1.062	10-32	.500	.406	.312	20	930	.04
RSCF4T	RSCFL4T	.2500	.750	.375	.250	.500	1.312	1/4-28	.687	.468	.375	27	1,380	.05
RSCF5T	RSCFL5T	.3125	.875	.437	.312	.625	1.375	5/16-24	.687	.500	.437	22	2,100	.08
RSCF6T	RSCFL6T	.3750	1.000	.500	.359	.719	1.625	3/8-24	.812	.687	.562	22	3,080	.13
RSCF7T	RSCFL7T	.4375	1.125	.562	.406	.812	1.812	7/16-20	.937	.750	.625	21	3,790	.18
RSCF8T	RSCFL8T	.5000	1.312	.625	.453	.937	2.125	1/2-20	1.062	.875	.750	20	4,720	.29
RSCF10T	RSCFL10T	.6250	1.500	.750	.484	1.125	2.500	5/8-18	1.375	1.000	.875	26	5,870	.43
RSCF12T	RSCFL12T	.7500	1.750	.875	.593	1.312	2.875	3/4-16	1.562	1.125	1.000	24	7,520	.65

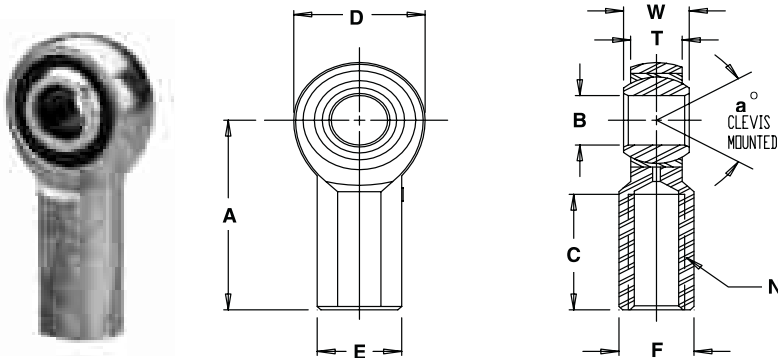
* A trade mark of E.I. Dupont de Nemours & Co., Inc.



MATERIALS

BALL	BODY
LOW CARBON STEEL	LOW CARBON STEEL
CASE HARDENED	ZINC PLATED
ZINC PLATED	CHROMATE TREATED
RACE	
TEFLON LUBRICATED, FIBER REINFORCED ENGINEERING PLASTIC	

MALE ROD ENDS		B DIA.	D DIA.	W WIDTH	T WIDTH	BALL DIA.	A LGTH	N THD.	C LGTH	a° MIS. ANGLE	ULT. STATIC RADIAL LOAD (lbs.)	APPROX. WEIGHT (lbs.)
RIGHT HAND PART NO.	LEFT HAND PART NO.	+0.0025 -0.0005	+0.010 -0.010	+0.005 -0.005	+0.015 -0.015	REF.	+0.015 -0.015	UNF 3A	+0.062 -0.031	REF.		
RNJM3	RNJML3	.1900	.625	.312	.250	.437	1.250	10-32	.750	13	1,174	.03
RNJM4	RNJML4	.2500	.750	.375	.281	.500	1.562	1/4-28	1.000	16	2,168	.04
RNJM5	RNJML5	.3125	.875	.437	.344	.625	1.875	5/16-24	1.250	14	2,796	.07
RNJM6	RNJML6	.3750	1.000	.500	.406	.719	1.938	3/8-24	1.250	12	4,012	.11
RNJM7	RNJML7	.4375	1.125	.562	.437	.812	2.125	7/16-20	1.375	14	4,244	.16
RNJM8	RNJML8	.5000	1.312	.625	.500	.937	2.438	1/2-20	1.500	12	6,453	.25
RNJM10	RNJML10	.6250	1.500	.750	.562	1.125	2.625	5/8-18	1.625	16	7,400	.38
RNJM12	RNJML12	.7500	1.750	.875	.687	1.312	2.875	3/4-16	1.750	14	10,937	.60

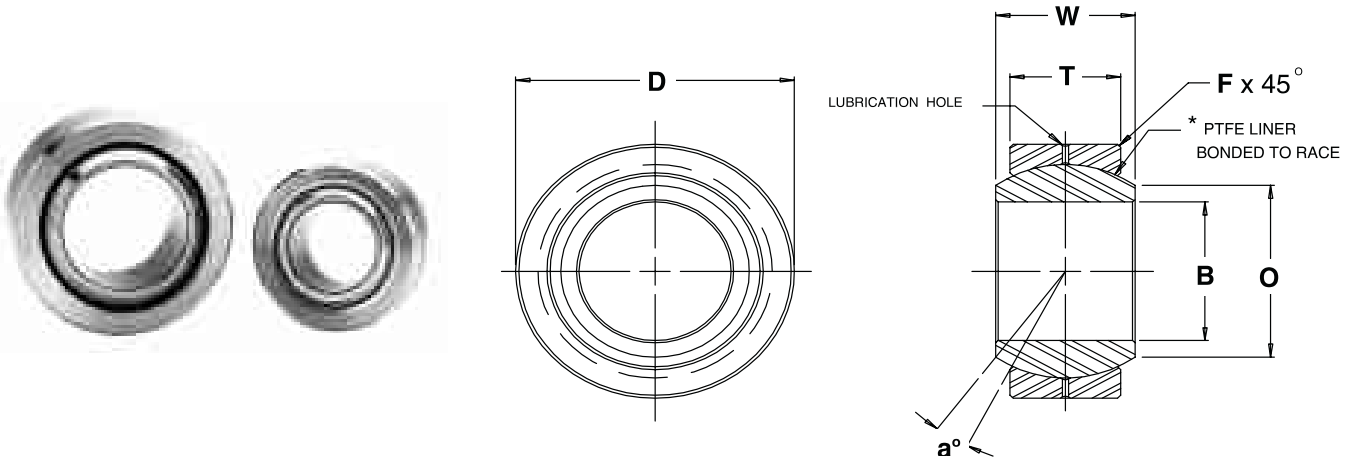


MATERIALS

BALL	BODY
LOW CARBON STEEL	LOW CARBON STEEL
CASE HARDENED	ZINC PLATED
ZINC PLATED	CHROMATE TREATED
RACE	
TEFLON LUBRICATED, FIBER REINFORCED ENGINEERING PLASTIC	

FEMALE ROD ENDS		B DIA.	D DIA.	W WIDTH	T WIDTH	BALL DIA.	A LGTH	N THD.	C LGTH	E DIA.	F FLAT	a° MIS. ANG.	ULT. STATIC RADIAL LOAD (lbs.)	APPROX. WEIGHT (lbs.)
RIGHT HAND PART NO.	LEFT HAND PART NO.	+0.0025 -0.0005	+0.010 -0.010	+0.005 -0.005	+0.015 -0.015	REF.	+0.015 -0.015	UNF 2B	+0.062 -0.031	+0.010 -0.010	+0.010 -0.010	REF.		
RNJF3	RNJFL3	.1900	.625	.312	.250	.437	1.062	10-32	.500	.406	.312	13	1,220	.04
RNJF4	RNJFL4	.2500	.750	.375	.281	.500	1.312	1/4-28	.687	.469	.375	16	2,500	.06
RNJF5	RNJFL5	.3125	.875	.437	.344	.625	1.375	5/16-24	.687	.500	.437	14	2,753	.09
RNJF6	RNJFL6	.3750	1.000	.500	.406	.719	1.625	3/8-24	.812	.687	.562	12	3,950	.15
RNJF7	RNJFL7	.4375	1.125	.562	.437	.812	1.812	7/16-20	.937	.750	.625	14	4,300	.20
RNJF8	RNJFL8	.5000	1.312	.625	.500	.937	2.125	1/2-20	1.062	.875	.750	12	6,453	.33
RNJF10	RNJFL10	.6250	1.500	.750	.562	1.125	2.500	5/8-18	1.375	1.000	.875	16	7,400	.48
RNJF12	RNJFL12	.7500	1.750	.875	.687	1.312	2.875	3/4-16	1.562	1.125	1.000	14	10,937	.72

NOTES: FOR STUDS ADD "Y" TO SUFFIX.
EXAMPLE: RNJM6Y



BEARING PART NO.	B DIA.	D DIA.	W WIDTH	T WIDTH	O DIA.	BALL DIA.	F CHAMFER	a° MIS ANG.	ULT. STATIC RADIAL LOAD (lbs.)	APPROX. WEIGHT (lbs.)
	+0.0015 -0.0005	+0.0000 -0.0007	+0.005 -0.005	+0.005 -0.005	REF.	REF.	REF.	REF.		
COM3	.1900	.5625	.281	.218	.293	.406	.015	11	3,250	.014
COM4	.2500	.6562	.343	.250	.364	.500	.022	13.5	4,950	.022
COM5	.3125	.7500	.375	.281	.419	.562	.032	12	6,475	.030
COM6	.3750	.8125	.406	.312	.516	.656	.032	10	8,400	.038
COM7	.4375	.9062	.437	.343	.530	.687	.032	8	9,453	.047
COM8	.5000	1.0000	.500	.390	.600	.781	.032	9.5	13,250	.065
COM8-101	.5000	1.0000	1.000	.390	.600	.781	.032	9.5	13,250	.065
COM9	.5625	1.0937	.562	.437	.671	.875	.032	9.5	16,630	.086
COM10	.6250	1.1875	.625	.500	.739	.968	.032	8.5	21,280	.110
COM12	.7500	1.4375	.750	.593	.920	1.187	.044	9	31,920	.204
COM12T-3R**	.7500	1.4375	.750	.593	.920	1.187	.044	9	31,920	.204
COM14	.8750	1.5625	.875	.703	.980	1.312	.044	9.5	41,960	.263
COM16	1.0000	1.7500	1.000	.797	1.118	1.500	.044	10	55,200	.386
HCOM16***	1.0000	2.0000	1.000	.781	1.360	1.687	.032	9	70,820	.553
HCOM19***	1.1875	2.3750	1.187	.937	1.610	2.000	.032	8.5	100,730	.895
HCOM20***	1.2500	2.3750	1.187	.937	1.610	2.000	.032	8.5	100,730	.895
HCOM24***	1.5000	2.7500	1.375	1.094	1.860	2.312	.032	8.5	135,950	1.358
HCOM28***	1.7500	3.1250	1.562	1.250	2.110	2.625	.044	8	176,370	1.948
HCOM32***	2.0000	3.5000	1.750	1.375	2.360	2.937	.044	8.5	217,060	2.650

* A trade mark of E.I. Dupont de Nemours & Co., Inc.

** BEARING COMES STANDARD WITH SNAP RING AND TEFLON LINER. CONTACT ENGINEERING FOR FURTHER INFORMATION.

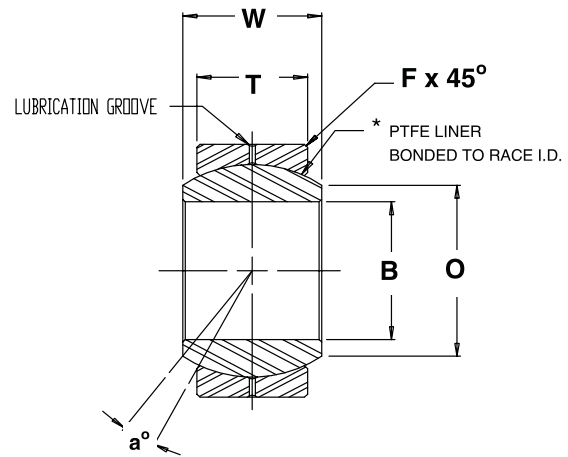
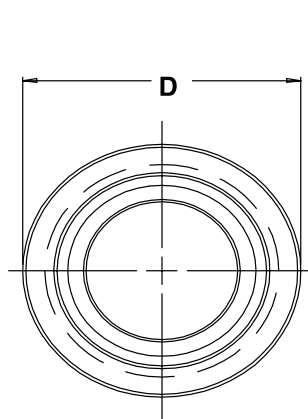
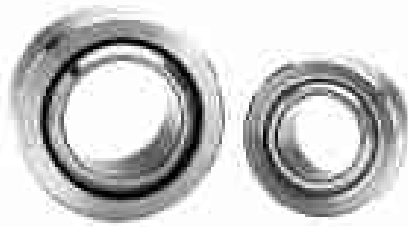
***BORE TOLERANCE: +.0025
-.0005

MATERIALS

BALL	RACE
52100 STEEL HEAT TREATED HARD CHROME PLATED	LOW CARBON STEEL OIL COATED

NOTES:

- LUBRICATION GROOVES IN I.D. & O.D. OF RACE
- FOR *TEFLON LINER ADD "T" TO SUFFIX.
EXAMPLE: COM12T
(UNITS WITH *TEFLON LINERS HAVE NO LUBRICATION HOLES OR GROOVES IN RACE.)



BEARING PART NO.	B DIA.	D DIA.	W WIDTH	T WIDTH	O DIA.	BALL DIA.	F CHAMFER	a° MIS ANG.	ULT. STATIC RADIAL LOAD (lbs.)	APPROX. WEIGHT (lbs.)
	+0.0015 -0.0005	+0.0000 -0.0005	+0.005 -0.005	+0.005 -0.005	REF.	REF.	REF.	REF.		
RKS3	.1900	.5625	.281	.218	.293	.406	.015	11	5,400	.014
RKS4	.2500	.6562	.343	.250	.364	.500	.022	13.5	8,400	.022
RKS5	.3125	.7500	.375	.281	.419	.562	.032	12	11,600	.065
RKS6	.3750	.8125	.406	.312	.516	.656	.032	10	15,600	.038
RKS7	.4375	.9062	.437	.343	.530	.687	.032	8	22,300	.047
RKS8	.5000	1.0000	.500	.390	.600	.781	.032	9.5	26,900	.065
RKS9	.5625	1.0937	.562	.437	.671	.875	.032	9.5	36,000	.086
RKS10	.6250	1.1875	.625	.500	.739	.968	.032	8.5	40,000	.110
RKS12	.7500	1.4375	.750	.593	.920	1.187	.044	9	78,000	.204
RKS14	.8750	1.5625	.875	.703	.980	1.312	.044	9.5	86,000	.263
RKS16	1.0000	1.7500	1.000	.797	1.118	1.500	.044	10	104,000	.386

* A trade mark of E.I. Dupont de Nemours & Co., Inc.

MATERIALS

BALL	RACE
52100 STEEL	ALLOY STEEL
HEAT TREATED	HEAT TREATED
HARD CHROME PLATED	OIL COATED

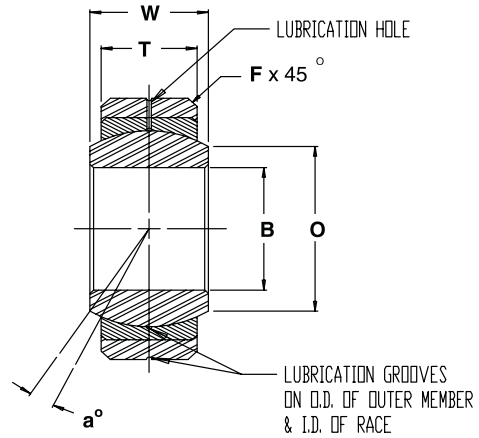
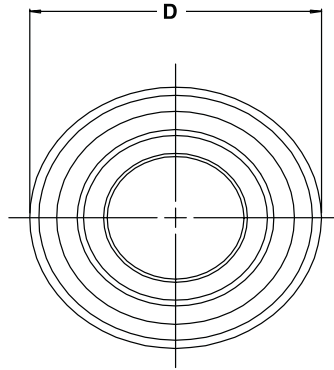
NOTES:

- LUBRICATION GROOVES IN I.D. & O.D. OF RACE.
- FOR *TEFLON LINER ADD "T" TO SUFFIX.
EXAMPLE: RKS8T
(UNITS WITH TEFLON LINERS HAVE NO LUBRICATION HOLES OR GROOVES IN RACE.)



RK SERIES

SPECIAL PURPOSE SERIES

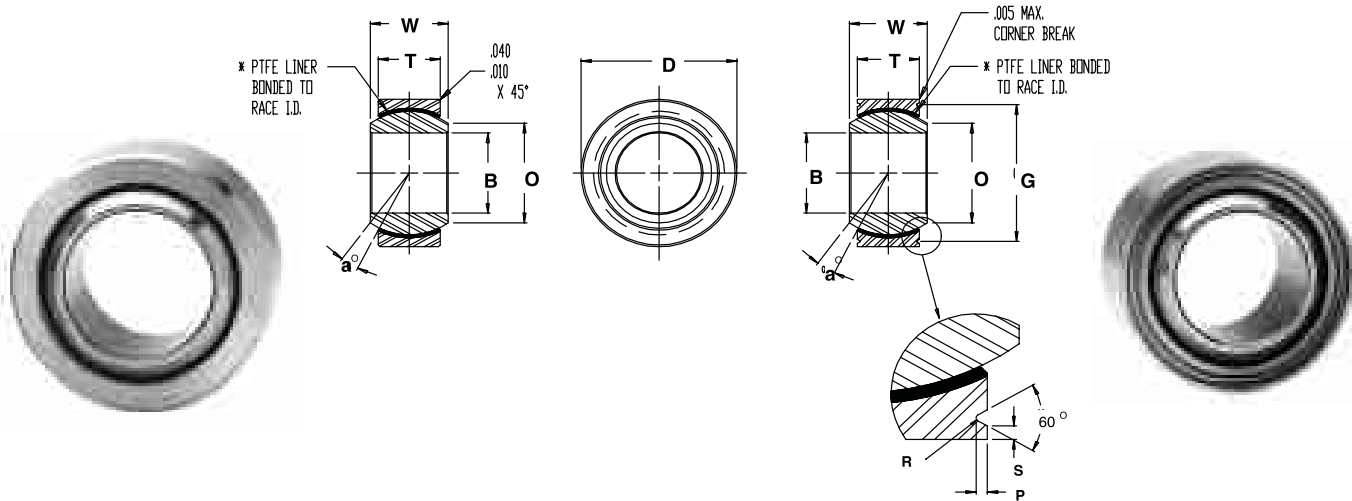


BEARING NO.	B DIA.	D DIA.	W WIDTH	*T WIDTH	O DIA.	BALL DIA.	F CHAMFER	a° MIS ANG.	MAXIMUM STATIC RADIAL LOAD	APPROX. WEIGHT
	+0.000 -0.0005	+0.000 -0.0005	+0.000 -0.005	+0.000 -0.005	REF.	REF.	+0.015 -0.000	REF.	(lbs.)	(lbs.)
RK3	.1900	.6250	.281	.187	.293	.406	.016	16.5	2,961	.02
RK4	.2500	.7500	.375	.281	.354	.500	.016	14.5	5,246	.04
RK5	.3125	.8750	.437	.313	.447	.625	.016	14	6,554	.05
RK6	.3750	1.0000	.500	.375	.517	.718	.016	12.5	8,606	.08
RK7	.4375	1.1875	.562	.437	.586	.812	.032	11	11,100	.12
RK8	.5000	1.3125	.687	.531	.637	.937	.044	12.5	15,600	.18
RK10	.6250	1.5625	.875	.687	.802	1.187	.044	12	25,700	.33
RK12	.7500	2.2500	1.250	.937	1.038	1.625	.044	15	47,600	.97
RK16	1.0000	2.3750	1.125	.875	1.345	1.750	.062	10	48,200	.94
RK19	1.1875	2.6250	1.250	1.000	1.562	2.000	.085	8.5	63,000	1.27
RK24	1.5000	3.2500	1.500	1.250	2.000	2.500	.085	7	98,000	2.38
RK30	1.8750	4.0000	1.625	1.313	2.521	3.000	.125	7	123,500	3.75

* "T" TOLERANCE ACROSS INSERTS IS +/- .015.

MATERIALS

OUTER MEMBER	RACE	BALL
LOW-CARBON STEEL-ZINC PLATED, DICHROMATE TREATED ON ALL SURFACES EXPOSED AFTER INSTALLATION	BRASS	52100 STEEL HEAT TREATED HARD CHROME PLATED



BEARING PART NO.		B DIA.	D DIA.	W WIDTH	T WIDTH	O DIA.	G DIA.	BALL DIA.	a° MIS. ANG.	LOAD RATINGS (lbs.)			APPROX. WEIGHT (lbs.)
PLAIN	GROOVED	+0.0000 -0.0005	+0.0000 -0.0005	+0.000 -0.005	+0.005 -0.005	REF.	+0.000 -0.008	REF.	MIN.	STATIC LIMIT		OSIL-LATING LOAD (lbs.)	
										RADIAL (lbs.)	AXIAL (lbs.)		
RKSSX3T	RKSSX3TV	.1900	.5625	.281	.218	.293	.500	.406	11	3,975	150	1,500	.020
RKSSX4T	RKSSX4TV	.2500	.6562	.343	.250	.364	.594	.500	13.5	6,040	430	3,320	.020
RKSSX5T	RKSSX5TV	.3125	.7500	.375	.281	.419	.650	.562	12	8,750	700	5,460	.030
RKSSX6T	RKSSX6TV	.3750	.8125	.406	.312	.516	.712	.656	10	10,540	1,100	6,600	.040
RKSSX7T	RKSSX7TV	.4375	.9062	.437	.343	.530	.806	.687	9.5	13,200	1,400	8,050	.050
RKSSX8T	RKSSX8TV	.5000	1.0000	.500	.390	.600	.876	.781	9.5	17,900	2,100	10,400	.070
RKSSX9T	RKSSX9TV	.5625	1.0937	.562	.437	.671	.970	.875	9.5	23,200	3,680	13,000	.090
RKSSX10T	RKSSX10TV	.6250	1.1875	.625	.500	.739	1.063	.968	8.5	30,500	4,720	16,450	.120
RKSSX12T	RKSSX12TV	.7500	1.4375	.750	.593	.920	1.313	1.187	9	46,400	6,750	23,600	.210
RKSSX14T	RKSSX14TV	.8750	1.5625	.875	.703	.980	1.438	1.312	9.5	62,200	9,350	30,250	.270
RKSSX16T	RKSSX16TV	1.0000	1.7500	1.000	.797	1.118	1.626	1.500	10	82,200	12,160	38,000	.390

* A trade mark of E.I. Dupont de Nemours & Co., Inc.

MATERIALS

BALL		RACE	LINER
FKSSX-T	**PFKSSX-T	17-4 PH STAINLESS STEEL HEAT TREATED	*TEFLON FABRIC
440C STAINLESS STEEL HEAT TREATED	52100 STEEL HEAT TREATED HARD CHROME PLATED		

** Bore tolerance is +.0015/-0.005

STAKING GROOVE DATA

BORE SIZES	S	R	P
	LAND	RAD.	DEPTH
	MIN.	+0.002 -0.005	+0.000 -0.010
3 & 4	.010	.010	.025
5	.020	.010	.035
6 & 7	.020	.015	.035
8 thru 16	.020	.015	.055

NOTES:

DIAMETER "B" AND "D" ARE CONCENTRIC WITHIN .005 T.I.R.

NO LOAD BREAKAWAY TORQUE

BORE SIZES	TORQUE
3 & 4	.25 to 5.0
5 to 12	1.0 to 5.0
14 & 16	2.0 to 8.0



RBL has several special series rod ends and spherical bearings available to suit your specifications.

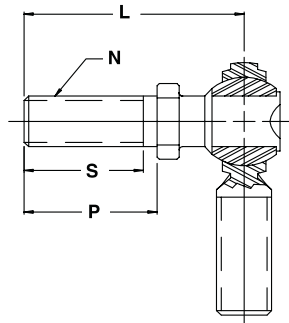
- *Aluminum
- *Stainless Steel
- *Alloy Steel
- *Chrome Polished
- *Heavy shank
- *Wear resistant
- *High Misalignment
- *Extra Strength

Special Self-Lubricating PTFE liners available in most series.

Most special series products are available with short lead times.

Consult your local Ringball office for products specifications, dimensions and load ratings.

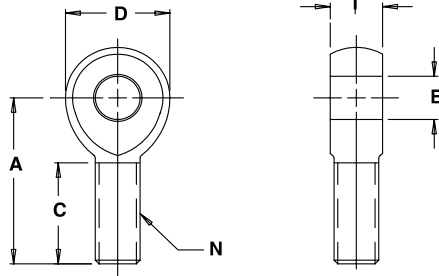
STUDED ROD ENDS



NOTE:

1. AVAILABLE ON ALL SERIES.
2. STUD MATERIAL: LOW CARBON STEEL AND ALLOY STEEL (HEAT TREATED) - ZINC PLATED.
3. STUD MISALIGNMENT APPROX. +/- 25° IN ANY DIRECTION.
4. TO SPECIFY RIGHT HAND STUD, ADD SUFFIX "Y" TO PART NUMBER.
EXAMPLE: RCM6Y
5. TO SPECIFY LEFT HAND STUD, ADD SUFFIX "YL" TO PART NUMBER.
EXAMPLE: RCM6YL
6. TO SPECIFY HEAT TREATED STUD, ADD SUFFIX "YX" TO PART NUMBER.
EXAMPLE: RCM6YX
7. FOR LOAD RATINGS WITH STUDS, PLEASE CONTACT F.K. ENGINEERING DEPARTMENT.

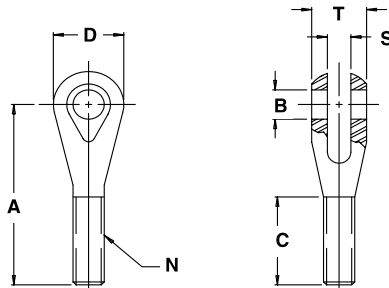
ROD END PART SIZE	L LGTH.	P LGTH.	S LGTH.	N THD.
	+0.015 -0.015	REF.	MIN.	UNF 2A
3	1.016	.500	.437	10-32
4	1.031	.562	.500	1/4-28
5	1.219	.687	.593	5/16-24
6	1.562	.906	.812	3/8-24
7	1.750	1.062	.937	7/16-20
8	2.000	1.125	1.000	1/2-20
10	2.500	1.500	1.375	5/8-18
12	3.000	1.812	1.625	3/4-16



MATERIALS
LOW CARBON STEEL
ZINC PLATED

SOLID ROD ENDS

PART NO.	BORE x THD.	B DIA.	D DIA.	T WIDTH	A LGTH.	C LGTH.	N THD.	ULT. RADIAL STATIC LOAD
	REF.	+0.0025 -0.0005	+0.010 -0.010	+0.005 -0.005	+0.015 -0.015	+0.062 -0.031	UNF 3A	(lbs.)
RD1	5/8 x 5/8	.6250	1.500	.750	2.625	1.625	5/8-18	16,600
RD2	5/8 x 3/4	.6250	1.750	.875	2.875	1.750	3/4-16	18,500
RD3	3/4 x 3/4	.7500	1.750	.875	2.875	1.750	3/4-16	18,500
RD4	1/2 x 1/2	.5000	1.312	.625	2.437	1.500	1/2-20	12,100
RD5	1/2 x 3/4	.5000	1.750	.875	2.875	1.750	3/4-16	18,500
RD8	1/2 x 3/4	.5000	1.500	.750	2.625	1.625	3/4-16	18,500



MATERIALS
LOW CARBON STEEL
ZINC PLATED OR
17-4 PH STAINLESS STEEL
NOTE:
1. ADD "S" TO PREFIX
EXAMPLE: SCV1

CLEVIS

PART NO.	BORE x THD.	B DIA.	D DIA.	T WIDTH	A LGTH.	C LGTH.	S SLOT	N THD.
	REF.	+0.0025 -0.0005	+0.010 -0.010	+0.005 -0.005	+0.015 -0.015	+0.062 -0.031	+0.005 -0.005	UNF 3A
CV1	3/8 x 5/8	.3750	1.125	.825	3.375	2.000	.375	5/8-18
CV2	1/2 x 5/8	.5000	1.125	.825	3.375	2.000	.375	5/8-18
CV3	3/8 x 3/4	.3750	1.125	.825	3.375	2.000	.375	3/4-16
CV4	1/2 x 3/4	.5000	1.125	.825	3.375	2.000	.375	3/4-16
CV5	3/8 x 1/2	.3750	.875	.655	3.012	1.700	.250	1/2-20

SPECIAL PRODUCTS



MATERIAL
STEEL- LOW CARBON- ZINC PLATED
ALUMINUM- 7075- T6

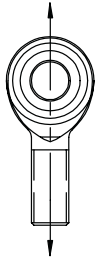
STEEL JAM NUTS

RIGHT HAND	LEFT HAND	THD. SIZE	HEX SIZE
SJNR03	SJNL03	10-32	3/8
SJNR04	SJNL04	1/4-28	7/16
SJNR05	SJNL05	5/16-24	1/2
SJNR06	SJNL06	3/8-24	9/16
SJNR07	SJNL07	7/16-20	11/16
SJNR08	SJNL08	1/2-20	3/4
SJNR10	SJNL10	5/8-18	15/16
SJNR12	SJNL12	3/4-16	1-1/8
* SJNR14	SJNL14	7/8-14	1-9/32
* SJNR16	SJNL16	1 1/4-12	1-13/16
* SJNR16-1	SJNL16-1	1-14	1-3/8
* SJNR16-2	SJNL16-2	1-12	1-3/8

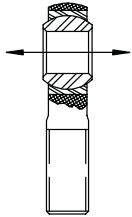
ALUMINUM JAM NUTS

RIGHT HAND	LEFT HAND	THD. SIZE	HEX SIZE
AJNR03	AJNL03	10-32	3/8
AJNR04	AJNL04	1/4-28	7/16
AJNR05	AJNL05	5/16-24	1/2
AJNR06	AJNL06	3/8-24	9/16
AJNR07	AJNL07	7/16-20	11/16
AJNR08	AJNL08	1/2-20	3/4
AJNR10	AJNL10	5/8-18	3/4
AJNR12	AJNL12	3/4-16	1-1/8

* NOTE: HEX SIZE MAY VARY DEPENDING ON AVAILABILITY OF MATERIAL.



RADIAL LOAD - A LOAD APPLIED NORMAL TO THE BEARING BORE AXIS AND PARALLEL TO THE SHANK AXIS.



AXIAL LOAD - A LOAD APPLIED ALONG THE BEARING BORE AXIS.

STATIC RADIAL LIMIT LOAD - THAT STATIC LOAD REQUIRED TO PRODUCE A SPECIFIED PERMANENT SET IN THE BEARING STRUCTURE. IT WILL VARY FOR A GIVEN SIZE AS A FUNCTION OF CONFIGURATION. IT MAY ALSO BE PIN LIMITED AS A FUNCTION OF BODY RESTRAINTS AS IN THE CASE OF ROD END BEARINGS.

STATIC RADIAL ULTIMATE LOAD - THAT LOAD THAT CAN BE APPLIED TO A BEARING WITHOUT FRACTURING THE BALL, RACE, OR ROD END EYE. THE ULTIMATE LOAD RATING IS USUALLY, BUT NOT ALWAYS 1.5 TIMES THE LIMIT LOAD.

STATIC AXIAL LIMIT LOAD - THAT LOAD THAT CAN BE APPLIED TO A BEARING TO PRODUCE A SPECIFIED PERMANENT SET IN THE BEARING STRUCTURE.

STATIC AXIAL ULTIMATE LOAD - THAT LOAD THAT CAN BE APPLIED TO A BEARING WITHOUT SEPARATING THE BALL FROM THE RACE. THE ULTIMATE LOAD RATING IS USUALLY, BUT NOT ALWAYS 1.5 TIMES THE LIMIT LOAD.

ANGLE OF MISALIGNMENT

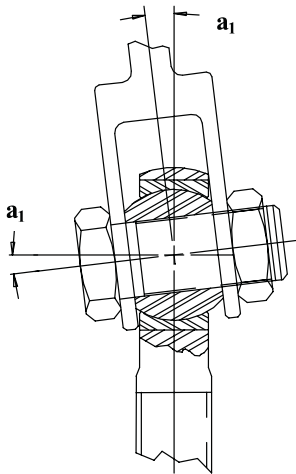


FIGURE 1
 $a_1 = \sin^{-1} \frac{W}{D} - \sin^{-1} \frac{H}{D}$

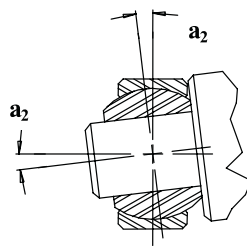


FIGURE 2
 $a_2 = \sin^{-1} \frac{W}{A} - \sin^{-1} \frac{H}{A}$

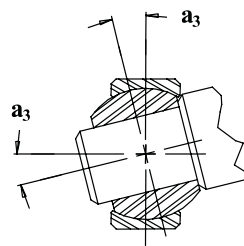


FIGURE 3
 $a_3 = \sin^{-1} \frac{W}{R} - \sin^{-1} \frac{H}{R}$

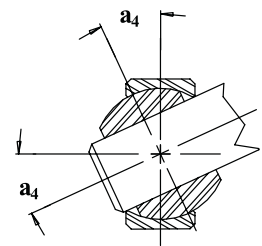


FIGURE 4
 $a_4 = \cos^{-1} \frac{B}{R} - \sin^{-1} \frac{H}{R}$

- B - Ball Bore
- M - Outer Race Chamfer
- D - Head Diameter or Outer Race Diameter
- R - Ball Diameter
- H - Housing Width
- A - $\sqrt{(D-2M)^2 + H^2}$
- W - Ball Width

INTERCHANGE TABLE



RBL	ALINABAL	AURORA	HEIM / BOSTON	MORSE / SPHERCO	TUTHILL	NMB / NHBB
MALE ROD ENDS						
RCM	AM-GP	CM	M-CR	CFM	MSM	AHM / LSPL
RCM-T	AM-T-GP	VCM		CFM-T	MSM-T	
RM		BM	HM	TRE		
RM-SB	VM-G	CM	HM-C	TM	MBM	
RNJM	PM		CMHD	CTMD	NM/SPM	
RJM	LCTM-X5	MM / KM	HMA		MTSM	HAMR
RSCM-T		CM-ET			SSM-T	
FEMALE ROD ENDS						
RCF	AF-GP	CW	F-CR	CFF	MSF	AHF-CSPL
RCF-T	AF-T-GP	CW-T		CFF-T	MSF-T	
RF		BW	HF	TR		
RF-SB	VF-G	CW	HFC	TF	MBF	
RNJF	PF		CFHD	CTFD	NF/SPF	
RJF	CF	MW / KW	HFA		MTSF	HAFR
RSCF-T		CW-ET			SSF-T	
SPHERICAL BEARINGS						
COM	COM-E	COM	COM	COM	COM	CBG
HCOM		HCOM		BH-LS		RSH
RK	VBC-G		LS	FLBG		ASL-G
RKS		COM-KH	LHA	SBGS		RS
RKSSX-T		NC-T	NE/LHSSE	NRR	NSSB	ABT
RKSSX-TV		NC-TG	NE-G/LHSSV V	NRRG	NSSB-V	ABT-V

NOTE: This interchange table shows approximate equivalency. It is not intended that all manufacturers' products are functionally interchangeable in all applications. RBL Bearings reserves the right to change specifications and other information included in this catalog without notice. All information, data, and dimension tables in this catalog have been carefully compiled and thoroughly checked. However, no responsibility for possible errors or omissions can be assumed.

WARNING!

The manufacturer can not determine all applications of its products. It is up to the customer to determine a suitable part for their application. For assistance, please contact your local Ringball office



Vancouver

7880 Fraser Park Drive
Burnaby, BC
V5J 5L8
T: (604) 294-3461
F: (604) 294-4680
E: vancouver@ringball.com

Edmonton

7606 McIntyre Road, N.W.
Edmonton, AB
T6E 6Z1
T: (780) 465-3311
F: (780) 490-4664
E: edmonton@ringball.com

Winnipeg

190 Omads Creek Blvd.
Winnipeg, MB
R2R 1V7
T: (204) 694-1455
F: (204) 633-7230
E: winnipeg@ringball.com

Toronto - H.O.

2160 Meadowpine Blvd.
Mississauga, ON
L5N 6H6
T: (905) 826-1100
F: (905) 826-9691
E: toronto@ringball.com

Montreal

2205 rue de l'Aviation
Dorval, QC
H9P 2X6
T: (514) 685-6006
F: (514) 685-6007
E: montreal@ringball.com

VISIT OUR WEBSITE: www.ringball.com