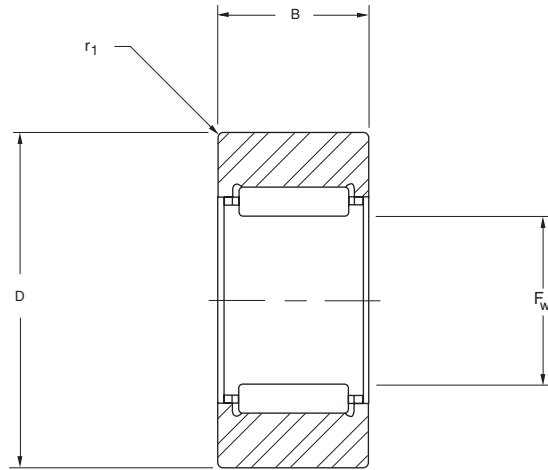


# Caged Roller Followers



## Series SRF without seals

PART NUMBER	ROLLER			$F_w$ Inside Diameter			$r_1$ Corner Radius	Approx. Weight [lbs]	Matching Inner Rings (See page 28)
	D		B +.000 -.005						
	Max.	Min.		Nominal	Min.	Max.			
SRF 20	1.000	.999	.495	1/2	.5005	.5014	.04	.066	—
SRF 20 SS	1.000	.999	.620	1/2	.5005	.5014	.04	.076	—
SRF 25	1.250	1.249	.620	5/8	.6258	.6267	.06	.129	—
SRF 25 SS	1.250	1.249	.620	5/8	.6258	.6267	.06	.140	—
SRF 30	1.500	1.499	.745	3/4	.7509	.7518	.06	.230	IR 7153, IR 7153 C
SRF 30 SS	1.500	1.499	.745	3/4	.7509	.7518	.06	.230	IR 7153, IR 7153 C
SRF 35	1.750	1.749	.745	7/8	.8759	.8768	.06	.320	IR 7173, IR 7173 C
SRF 35 SS	1.750	1.749	.745	7/8	.8759	.8768	.06	.330	IR 7173, IR 7173 C
SRF 40	2.000	1.999	.995	1	1.0009	1.0018	.08	.590	IR 7194, IR 7194 C
SRF 40 SS	2.000	1.999	.995	1	1.0009	1.0018	.08	.560	IR 7194, IR 7194 C
SRF 45	2.250	2.249	.995	1 1/4	1.2510	1.2519	.08	.690	IR 7234
SRF 45 SS	2.250	2.249	.995	1 1/4	1.2510	1.2519	.08	.580	IR 7234
SRF 50	2.500	2.499	.995	1 3/8	1.3760	1.3769	.08	.860	IR 7254, IR 7254 D
SRF 50 SS	2.500	2.499	.995	1 3/8	1.3760	1.3769	.08	.860	IR 7254, IR 7254 D
SRF 55	2.750	2.749	1.245	1 1/2	1.5010	1.5019	.08	1.340	IR 7275, IR 7275 C
SRF 55 SS	2.750	2.749	1.245	1 1/2	1.5010	1.5019	.08	1.310	IR 7275, IR 7275 C
SRF 60	3.000	2.999	1.245	1 5/8	1.6260	1.6269	.08	1.610	IR 7295, IR 7295 C
SRF 65	3.250	3.249	1.245	1 3/4	1.7510	1.7520	.10	1.910	IR 7315, IR 7315 C
SRF 70	3.500	3.499	1.245	1 7/8	1.8760	1.8770	.10	2.230	IR 7335
SRF 75	3.750	3.749	1.245	2	2.0011	2.0021	.10	2.590	IR 7355, IR 7355 D
SRF 80	4.000	3.999	1.245	2 1/4	2.2511	2.2521	.10	2.750	IR 8405, IR 8405 D

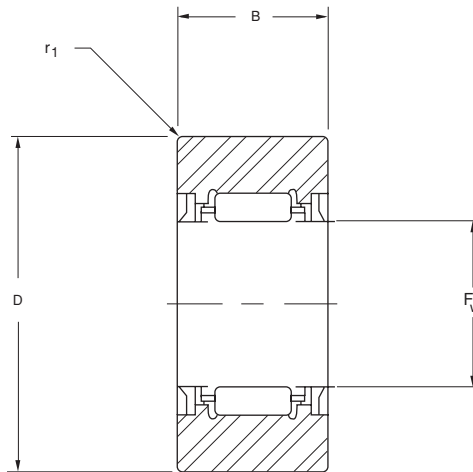
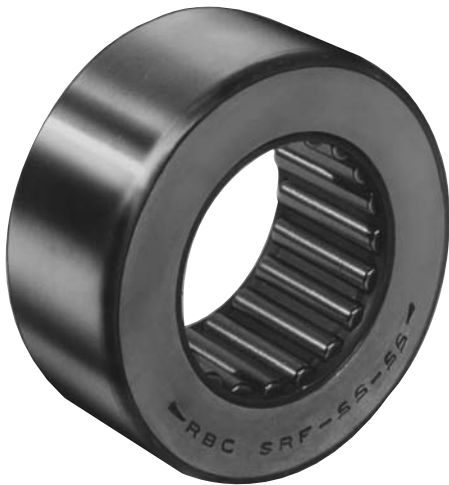
All dimensions are in inches.

Normal operating loads should not exceed the bearing dynamic capacity.

Roller followers used without inner rings require a shaft with minimum hardness of Rc 58 and surface finish of 16 rms or better.

Standard configuration of roller follower series SRF-- SS is with seal lips facing outward. To specify roller followers with seal lips facing inward, replace suffix -SS with suffix -RR. (example: SRF 30 RR).

# Caged Roller Followers



## Series SRF--SS with seals

	CAPACITIES			Critical Angle [deg] ②	Speed Limit (grease) [rpm] ③	Recommended Shaft Diameter (without Inner Ring)		PART NUMBER
	Dynamic Capacity C [lbf]	Static Capacity C <sub>0</sub> [lbf] ①	Track Capacity @ 40 Rc [lbf]			Max.	Min.	
	1,900	2,200	1,280			60.0	10,900	
1,200	1,300	1,650	60.0	7,600	.5000	.4996	SRF 20 SS	
2,700	3,300	1,950	60.1	8,700	.6250	.6246	SRF 25	
1,600	1,600	1,950	60.1	6,100	.6250	.6246	SRF 25 SS	
4,400	5,900	2,900	50.5	7,200	.7500	.7496	SRF 30	
2,300	2,700	2,900	51.2	5,100	.7500	.7496	SRF 30 SS	
4,700	6,500	3,400	47.5	6,200	.8750	.8745	SRF 35	
2,400	3,000	3,400	48.1	4,400	.8750	.8746	SRF 35 SS	
6,900	11,300	5,200	41.8	5,400	1.0000	.9995	SRF 40	
5,000	7,500	5,200	41.8	3,800	1.0000	.9995	SRF 40 SS	
7,800	13,900	5,800	35.6	4,300	1.2500	1.2495	SRF 45	
4,900	8,400	5,800	36.0	3,100	1.2500	1.2495	SRF 45 SS	
8,300	15,700	6,450	32.3	3,900	1.3750	1.3745	SRF 50	
5,100	8,900	6,450	34.4	2,800	1.3750	1.3745	SRF 50 SS	
11,500	22,800	9,250	32.3	3,600	1.5000	1.4995	SRF 55	
8,000	15,800	9,250	31.2	2,500	1.5000	1.4995	SRF 55 SS	
9,400	20,700	10,100	30.1	3,300	1.6250	1.6245	SRF 60	
12,500	26,600	10,500	28.5	3,000	1.7500	1.7495	SRF 65	
10,100	23,800	11,300	26.8	2,800	1.8750	1.8745	SRF 70	
10,600	25,800	12,100	24.9	2,700	2.0000	1.9994	SRF 75	
12,700	26,700	12,950	28.8	2,300	2.2500	2.2494	SRF 80	

① Bearing Static Capacity provided for comparison only.

② For oscillatory application with angle of oscillation less than critical angle, consult RBC engineering department for revised fatigue calculation.

③ Speed limit of sealed roller followers is determined by maximum seal surface speed. For roller followers without seals, speed limit may be increased by 30% with oil lubrication.