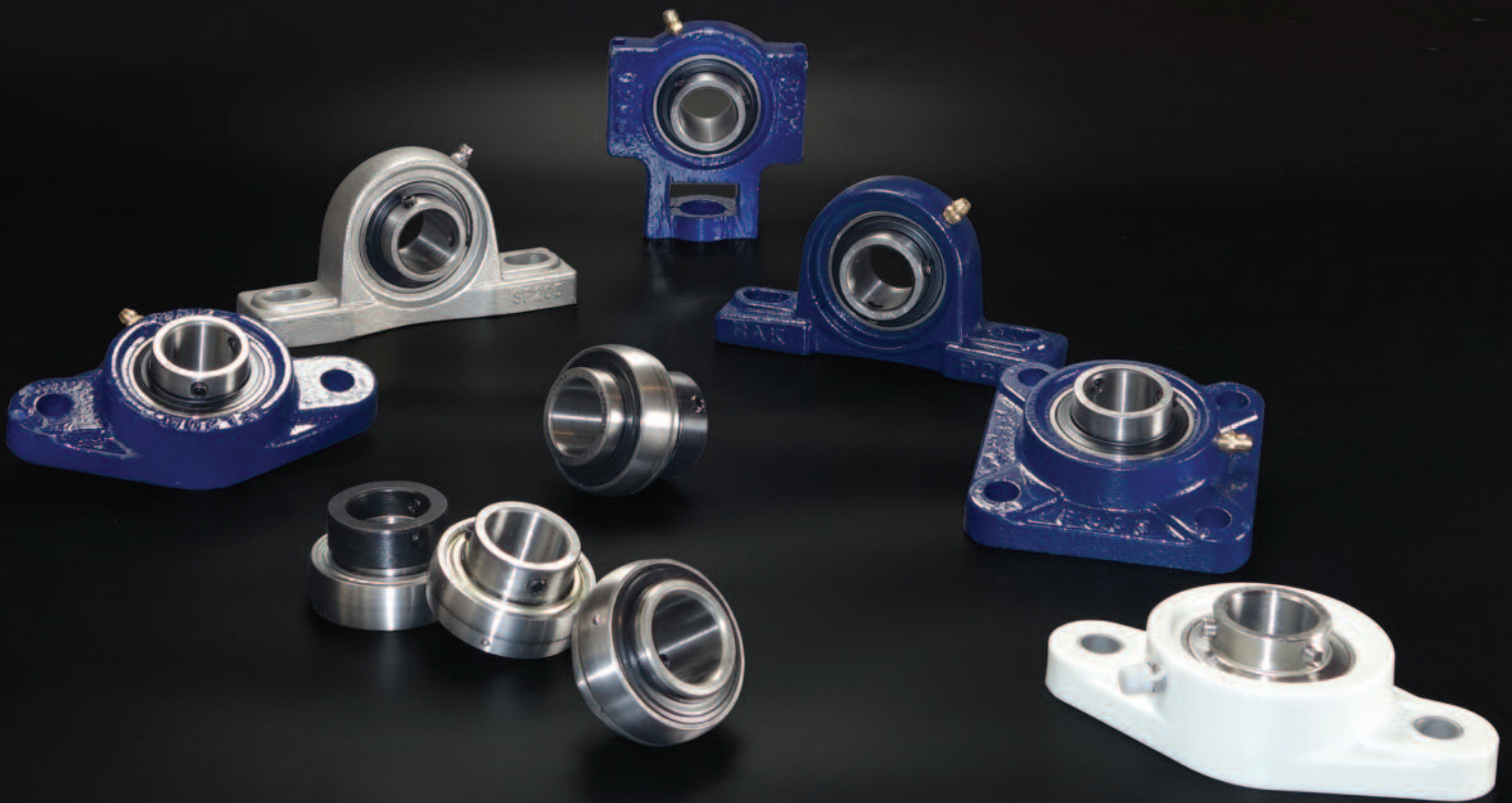


POWER RITE

Bearings



Mounted Units & Inserts

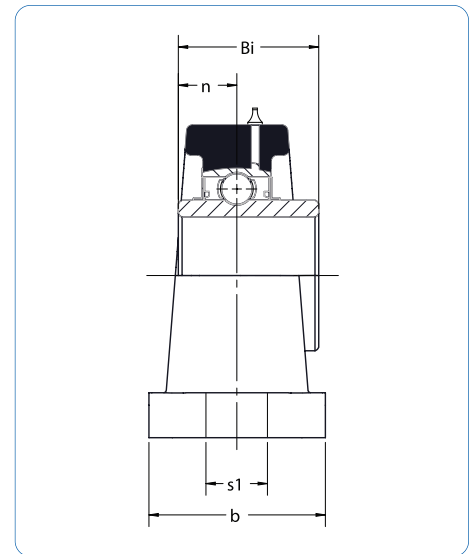
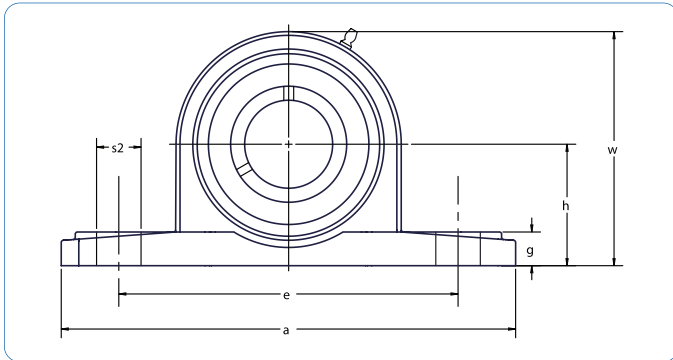


Table of Contents

UCP 200 Series.....	1
HCP 200 Series.....	2
SBP 200 Series	3
SAP 200 Series.....	3
UCAK 200 Series	4
HCAK 200 Series	5
SBAK 200 Series.....	6
SAAK 200 Series.....	6
UCPA 200 Series.....	7
UCF 200 Series	8
HCFS 200 Series.....	9
SBF 200 Series	10
SAF 200 Series	10
UCFC 200 Series	11
UCFB 200 Series.....	12
SBF3X 200 Series	13
SAF3X 200 Series	13
UCFL 200 Series	14
HCFT 200 Series	15
SBFL 200 Series	16
SAFL 200 Series	17
SBLF 200 Series.....	18
SBFX 200 Series.....	19
UCT 200 Series.....	20
UC 200 Series.....	21
HC 200 Series.....	22
SB/CSB 200 Series	23
SA/CSA 200 Series	24
SER 200 Series	25
Pressed Steel Pillow Blocks & Flanges	26
Interchange.....	27
Technical Data.....	28

UCP 200 Series

Pillow Blocks Standard Shaft Height



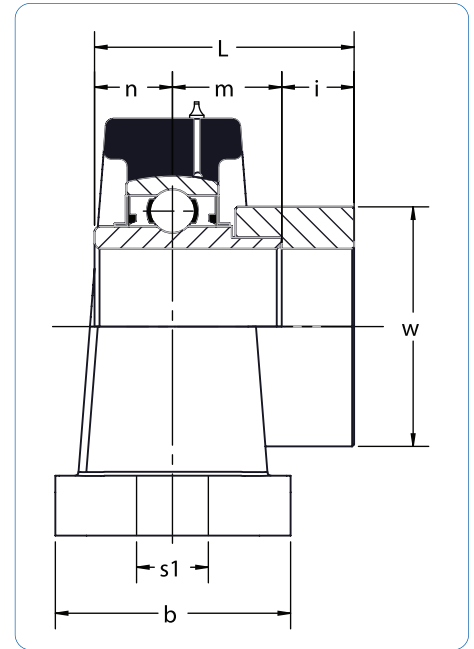
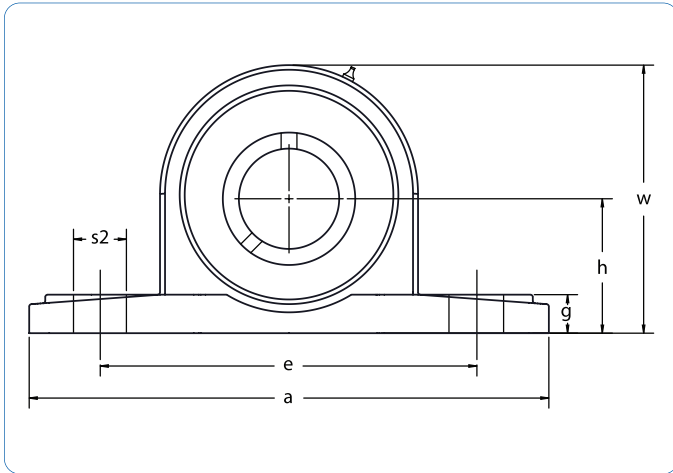
Dimensions (in)

Unit No.	Shaft Dia.	h	a	e	b	S ₁	S ₂	g	w	Bi	n	Bearing No.	Housing No.	Wt. LBS
UCP 202-10	5/8	1 3/16	5	3 3/4	1 1/2	1/2	3/4	21/32	2 15/32	1.221	.500	UC 202-10	P 202	1.40
UCP 204-12	3/4	1 5/16	5	3 3/4	1 1/2	1/2	3/4	5/8	2 31/64	1.221	.500	UC 204-12	P 204	1.43
UCP 205-14	7/8											UC 205-14		1.81
UCP 205-15	15/16	1 7/16	5 1/2	4 1/8	1 1/2	1/2	3/4	5/8	2 25/32	1.343	.563	UC 205-15	P 205	1.76
UCP 205-16	1											UC 205-16		1.74
UCP 206-18	1 1/8											UC 206-18		2.84
UCP 206-19	1 3/16	1 11/16	6 1/2	4 3/4	1 7/8	21/32	13/16	23/32	3 5/16	1.500	.626	UC 206-19	P 206	2.76
UCP 206-20	1 1/4											UC 206-20		2.71
UCP 207-20	1 1/4											UC 207-20		3.57
UCP 207-21	1 5/16	1 7/8	6 9/16	5	1 7/8	21/32	13/16	23/32	3 21/32	1.689	.689	UC 207-21	P 207	3.53
UCP 207-22	1 3/8											UC 207-22		3.46
UCP 207-23	1 7/16											UC 207-23		3.40
UCP 208-24	1 1/2	1 15/16	7 1/4	5 13/32	2 1/8	21/32	13/16	25/32	3 27/32	1.937	.748	UC 208-24	P 208	4.50
UCP 209-26	1 5/8											UC 209-26		5.25
UCP 209-27	1 11/16	2 1/8	7 15/32	5 3/4	2 1/8	21/32	13/16	55/64	4 3/16	1.937	.748	UC 209-27	P 209	5.16
UCP 209-28	1 3/4											UC 209-28		5.07
UCP 210-30	1 7/8	2 1/4	8 1/8	6 1/4	2 3/8	25/32	7/8	7/8	4 7/16	2.032	.748	UC 210-30	P 210	6.11
UCP 210-31	1 15/16											UC 210-31		6.00
UCP 211-32	2											UC 211-32		7.63
UCP 211-34	2 1/8	2 1/2	8 5/8	6 23/32	2 3/8	25/32	7/8	61/64	4 29/32	2.189	.874	UC 211-34	P 211	7.25
UCP 211-35	2 3/16											UC 211-35		7.10
UCP 212-36	2 1/4											UC 212-36		10.67
UCP 212-38	2 3/8	2 3/4	9 1/2	7 1/4	2 3/4	25/32	1	31/32	5 7/16	2.563	1.000	UC 212-38	P 212	10.19
UCP 212-39	2 7/16											UC 212-39		10.00
UCP 213-40	2 1/2	3	10 7/16	8	2 53/64	1	1 3/16	63/64	5 29/32	2.563	1.000	UC 213-40	P 213	12.48
UCP 214-44	2 3/4	3 1/8	10 15/32	8 9/32	2 27/32	1	1 3/16	1 7/64	6 5/32	2.937	1.189	UC 214-44	P 214	16.07
UCP 215-47	2 15/16	3 1/4	10 13/16	8 17/32	2 29/32	1	1 3/16	1 3/16	6 3/8	3.063	1.311	UC 215-47	P 215	17.50

Relubrication Feature is Standard. Note: "Solid Base Housing"

HCP 200 Series

Pillow Blocks Standard Shaft Height



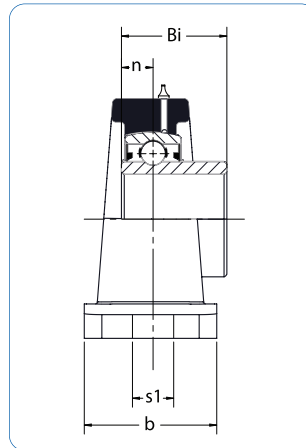
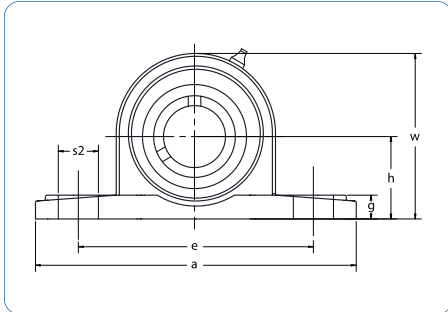
Dimensions (in)

Unit No.	Shaft Dia.	h	a	e	b	S ₁	S ₂	g	w	L	n	m	i	W	Bolt Size In.	Bearing No.	Housing No.
HCP 202-10	5/8	1 3/16	5	3 3/4	1 1/2	1/2	3/4	21/32	2 15/32	1.721	.673	.673	0.3740	1.26	3/8	HC 202-10	P 202
HCP 204-12	3/4	1 5/16	5	3 3/4	1 1/2	1/2	3/4	5/8	2 31/64	1.721	.673	.673	0.3740	1.26	3/8	HC 204-12	P 204
HCP 205-14	7/8															HC 205-14	
HCP 205-15	15/16	1 7/16	5 1/2	4 1/8	1 1/2	1/2	3/4	5/8	2 25/32	1.748	.689	.685	0.3740	1.50	3/8	HC 205-15	P 205
HCP 205-16	1															HC 205-15	
HCP 206-18	1 1/8															HC 206-18	
HCP 206-19	1 3/16	1 11/16	6 1/2	4 3/4	1 7/8	21/32	13/16	23/32	3 5/16	1.906	.721	.717	0.4685	1.75	1/2	HC 206-19	P 206
HCP 206-20	1 1/4															HC 206-20	
HCP 207-20	1 1/4															HC 207-20	
HCP 207-21	1 5/16	1 7/8	6 9/16	5	1 7/8	21/32	13/16	23/32	3 21/32	2.012	.740	.740	0.5315	2.19	1/2	HC 207-21	P 207
HCP 207-22	1 3/8															HC 207-22	
HCP 207-23	1 7/16															HC 207-23	
HCP 208-24	1 1/2	1 15/16	7 1/4	5 13/32	2 1/8	21/32	13/16	25/32	3 27/32	2.217	.843	.843	0.5315	2.37	1/2	HC 208-24	P 208
HCP 209-26	1 5/8															HC 209-26	
HCP 209-27	1 11/16	2 1/8	7 15/32	5 3/4	2 1/8	21/32	13/16	55/64	4 3/16	2.217	.843	.843	0.5315	2.50	1/2	HC 209-27	P 209
HCP 209-28	1 3/4															HC 209-28	
HCP 210-30	1 7/8	2 1/4	8 1/8	6 1/4	2 3/8	25/32	7/8	7/8	4 7/16	2.469	.969	.969	0.5315	2.75	5/8	HC 210-30	P 210
HCP 210-31	1 15/16															HC 210-31	
HCP 211-32	2															HC 211-32	
HCP 211-34	2 1/8	2 1/2	8 5/8	6 23/32	2 3/8	25/32	7/8	61/64	4 29/32	2.811	1.095	1.091	0.6299	3.00	5/8	HC 211-34	P 211
HCP 211-35	2 3/16															HC 211-35	

Relubrication Feature is Standard. Note: "Solid Base Housing"

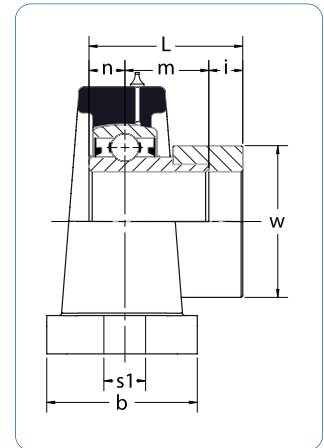
SBP/SAP 200 Series

Pillow Blocks Standard Shaft Height



◀ SBP

SAP ▶



Dimensions (in)

Unit No.	Shaft Dia.	h	a	e	b	S ₁	S ₂	g	w	Bi	n	Bolt Size In.	Bearing No.	Housing No.
SBP 202-10	5/8	1 3/16	4 7/8	3 5/8	1 7/32	7/16	7/8	1/2	2 1/4	0.866	0.236	3/8	SB 202-10	P 202
SBP 204-12	3/4	1 5/16	5	3 3/4	1 1/2	1/2	3/4	5/8	2 31/64	0.984	0.276	3/8	SB 204-12	P 204
SBP 205-14	7/8												SB 205-14	
SBP 205-15	15/16	1 7/16	5 1/2	4 1/8	1 1/2	1/2	3/4	5/8	2 25/32	1.063	0.295	3/8	SB 205-15	P 205
SBP 205-16	1												SB 205-16	
SBP 206-18	1 1/8												SB 206-18	
SBP 206-19	1 3/16	1 11/16	6 1/2	4 3/4	1 7/8	21/32	13/16	23/32	3 5/16	1.181	0.315	1/2	SB 206-19	P 206
SBP 206-20	1 1/4												SB 206-20	
SBP 207-20	1 1/4												SB 207-20	
SBP 207-21	1 5/16	1 7/8	6 9/16	5	1 7/8	21/32	13/16	23/32	3 21/32	1.260	0.335	1/2	SB 207-21	P 207
SBP 207-22	1 3/8												SB 207-22	
SBP 207-23	1 7/16												SB 207-23	
SBP 208-24	1 1/2	1 15/16	7 1/4	5 13/32	2 1/8	21/32	13/16	25/32	3 27/32	1.339	0.354	1/2	SB 208-24	P 208

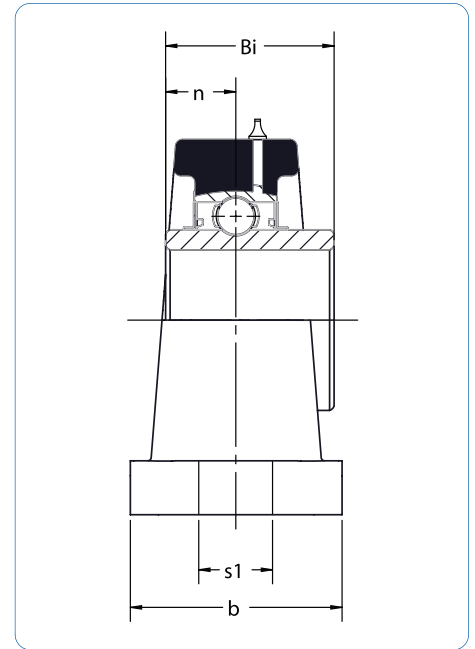
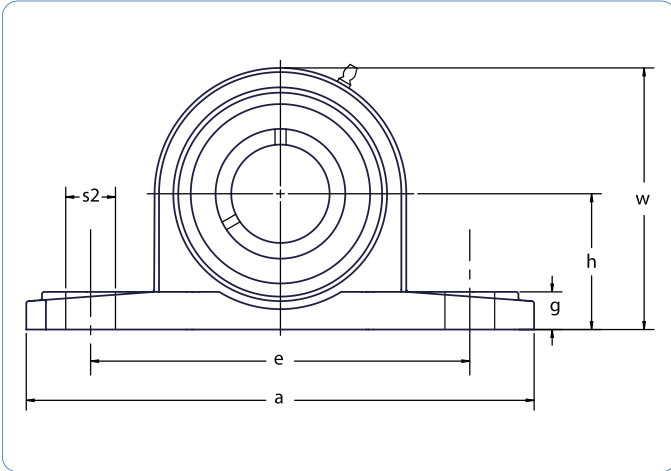
Relubrication Feature is Standard. Note: "Solid Base Housing"

Unit No.	Shaft Dia.	h	a	e	b	S ₁	S ₂	g	w	L	n	m	i	W	Bolt Size In.	Bearing No.	Housing No.
SAP 202-10	5/8	1 3/16	4 7/8	3 5/8	1 7/32	7/16	7/8	1/2	2 1/4	1.125	0.236	0.49	0.3760	1.13	3/8	SA 202-10	P 202
SAP 204-12	3/4	1 5/16	5	3 3/4	1 1/2	1/2	3/4	5/8	2 31/64	1.22	0.276	0.55	0.3776	1.26	3/8	SA 204-12	P 204
SAP 205-14	7/8															SA 205-14	
SAP 205-15	15/16	1 7/16	5 1/2	4 1/8	1 1/2	1/2	3/4	5/8	2 25/32	1.221	0.295	0.55	0.3740	1.50	3/8	SA 205-15	P 205
SAP 205-16	1															SA 205-15	
SAP 206-18	1 1/8															SA 206-18	
SAP 206-19	1 3/16	1 11/16	6 1/2	4 3/4	1 7/8	21/32	13/16	23/32	3 5/16	1.406	0.315	0.58	0.4677	1.75	1/2	SA 206-19	P 206
SAP 206-20	1 1/4															SA 206-20	
SAP 207-20	1 1/4															SA 207-20	
SAP 207-21	1 5/16	1 7/8	6 9/16	5	1 7/8	21/32	13/16	23/32	3 31/32	1.532	0.335	0.63	0.5315	2.19	1/2	SA 207-21	P 207
SAP 207-22	1 3/8															SA 207-22	
SAP 207-23	1 7/16															SA 207-23	
SAP 208-24	1 1/2	1 15/16	7 1/4	5 13/32	2 1/8	21/32	13/16	25/32	3 27/32	1.721	0.354	0.76	0.5323	2.38	1/2	SA 208-24	P 208

Relubrication Feature is Standard. Note: "Solid Base Housing"

UCAK 200 Series

Pillow Blocks Low Shaft Height



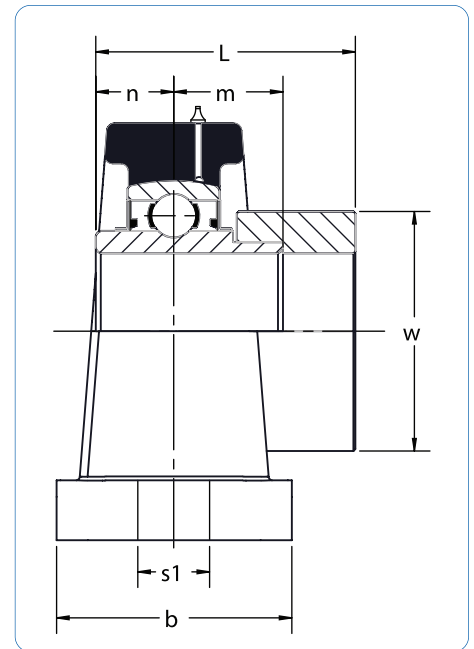
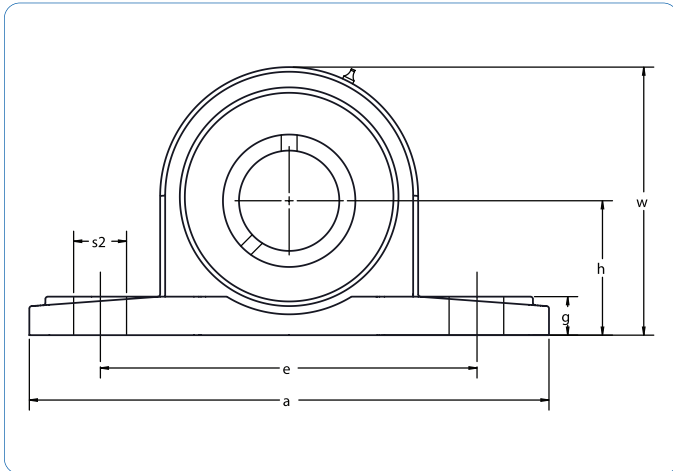
Dimensions (in)

Unit No.	Shaft Dia.	h	a	e	b	S ₁	S ₂	g	w	Bi	n	Bearing No.	Housing No.	Wt. LBS
UCAK 204-12	3/4	1 1/4	5	3 3/4	1 1/2	7/16	5/8	9/16	2 17/32	1.221	.500	UC 204-12	AK 204	1.6
UCAK 205-14	7/8											UC 205-14		
UCAK 205-15	15/16	1 5/16	5 1/2	4 1/8	1 1/2	1/2	3/4	5/8	2 11/16	1.343	.563	UC 205-15	AK 205	2.1
UCAK 205-16	1											UC 205-16		
UCAK 206-18	1 1/8											UC 206-18		
UCAK 206-19	1 3/16	1 9/16	6 1/2	4 3/4	1 7/8	19/32	13/16	23/32	3 3/16	1.500	.626	UC 206-19	AK 206	2.9
UCAK 206-20	1 1/4											UC 206-20		
UCAK 207-20	1 1/4											UC 207-20		
UCAK 207-21	1 5/16											UC 207-21		
UCAK 207-22	1 3/8	1 13/16	7	5 3/8	1 7/8	19/32	7/8	3/4	3 11/16	1.689	.689	UC 207-22	AK 207	4.2
UCAK 207-23	1 7/16											UC 207-23		
UCAK 208-24	1 1/2	1 15/16	7 1/4	5 13/32	2 1/8	21/32	13/16	25/32	3 27/32	1.937	.748	UC 208-24	AK 208	4.9
UCAK 209-26	1 5/8											UC 209-26		
UCAK 209-27	1 11/16	2 1/16	7 3/4	5 63/64	2 5/32	19/32	63/64	29/32	4 11/64	1.937	.748	UC 209-27	AK 209	6.2
UCAK 209-28	1 3/4											UC 209-28		
UCAK 210-30	1 7/8											UC 210-30		
UCAK 210-31	1 15/16	2 3/16	8 3/8	6 1/2	2 9/32	19/32	63/64	29/32	4 7/16	2.032	.748	UC 210-31	AK 210	6.8
UCAK 211-32	2											UC 211-32		
UCAK 211-34	2 1/8	2 7/16	9 1/4	7 1/8	2 47/64	3/4	1 1/8	15/16	4 59/64	2.189	.874	UC 211-34	AK 211	11.7
UCAK 211-35	2 3/16											UC 211-35		
UCAK 212-36	2 1/4											UC 212-36		
UCAK 212-38	2 3/8	2 11/16	9 3/4	7 5/8	2 3/4	3/4	1 1/8	1 1/8	5 7/16	2.563	1.000	UC 212-38	AK 212	12.7
UCAK 212-39	2 7/16											UC 212-39		

Relubrication Feature is Standard. Note: "Solid Base Housing"

HCAK 200 Series

Pillow Blocks Low Shaft Height



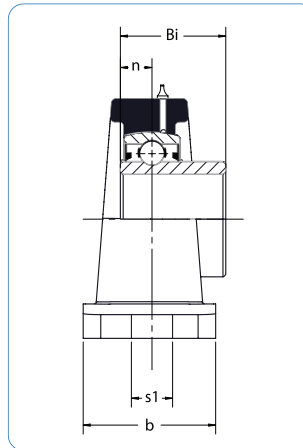
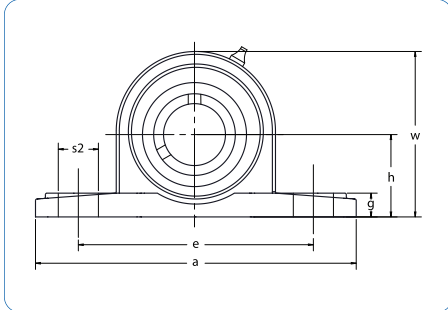
Dimensions (in)

Unit No.	Shaft Dia.	h	a	e	b	S ₁	S ₂	g	w	L	n	m	W	Bolt Size In.	Bearing No.	Housing No.
HCAK 204-12	3/4	1 1/4	5	3 3/4	1 1/2	7/16	5/8	9/16	2 17/32	1.721	0.673	0.673	1.26	3/8	HC 204-12	AK 204
HCAK 205-14	7/8														HC 205-14	
HCAK 205-15	5/16	1 5/16	5 1/2	4 1/8	1 1/2	1/2	3/4	5/8	2 11/16	1.748	0.689	0.685	1.50	3/8	HC 205-15	AK 205
HCAK 205-16	1														HC 205-16	
HCAK 206-18	1 1/8														HC 206-18	
HCAK 206-19	1 3/16	1 9/16	6 1/2	4 3/4	1 7/8	19/32	13/16	23/32	3 3/16	1.906	0.721	0.717	1.75	1/2	HC 206-19	AK 206
HCAK 206-20	1 1/4														HC 206-20	
HCAK 207-20	1 1/4														HC 207-20	
HCAK 207-21	1 5/16														HC 207-21	
HCAK 207-22	1 3/8	1 13/16	7	5 3/8	1 7/8	19/32	7/8	3/4	3 11/16	2.012	0.740	0.740	2.19	1/2	HC 207-22	AK 207
HCAK 207-23	1 7/16														HC 207-23	
HCAK 208-24	1 1/2	1 15/16	7 1/4	5 13/32	2 1/8	21/32	13/16	25/32	3 27/32	2.217	0.843	0.843	2.37	1/2	HC 208-24	AK 208
HCAK 209-26	1 5/8														HC 209-26	
HCAK 209-27	1 11/16	2 1/16	7 3/4	5 63/64	2 5/32	19/32	63/64	29/32	4 11/64	2.217	0.843	0.843	2.50	1/2	HC 209-27	AK 209
HCAK 209-28	1 3/4														HC 209-28	
HCAK 210-30	1 7/8														HC 210-30	
HCAK 210-31	1 15/16	2 3/16	8 3/8	6 1/2	2 9/32	19/32	63/64	29/32	4 7/16	2.469	0.969	0.969	2.75	1/2	HC 210-31	AK 210
HCAK 211-32	2														HC 211-32	
HCAK 211-34	2 1/8	2 7/16	9 1/4	7 1/8	2 47/64	3/4	1 1/8	15/16	4 59/64	2.811	1.095	1.091	3.00	5/8	HC 211-34	AK 211
HCAK 211-35	2 3/16														HC 211-35	
HCAK 212-36	2 1/4														HC 212-36	
HCAK 212-38	2 3/8	2 11/16	9 3/4	7 5/8	2 3/4	3/4	1 1/8	1 1/8	5 7/16	3.063	1.221	1.217	3.31	5/8	HC 212-38	AK 212
HCAK 212-39	2 7/16														HC 212-39	

Relubrication Feature is Standard. Note: "Solid Base Housing"

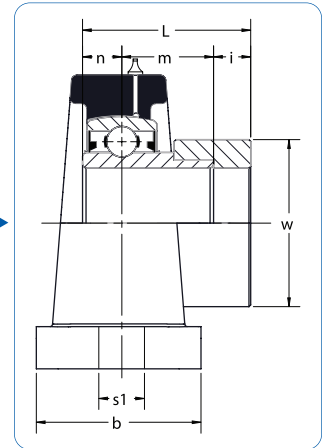
SBAK/SAAK 200 Series

Pillow Blocks Low Shaft Height



◀ SBAK

SAAK ▶



Dimensions (in)

Unit No.	Shaft Dia.	h	a	e	b	S ₁	S ₂	g	w	Bi	n	Bolt Size In.	Bearing No.	Housing No.
SBAK 204-12	3/4	1 1/4	5	3 3/4	1 1/2	7/16	5/8	9/16	2 17/32	0.984	0.276	3/8	SB 204-12	AK 204
SBAK 205-14	7/8												SB 205-14	
SBAK 205-15	15/16	1 5/16	5 1/2	4 1/8	1 1/2	1/2	3/4	5/8	2 11/16	1.063	0.295	3/8	SB 205-15	AK 205
SBAK 205-16	1												SB 205-16	
SBAK 206-18	1 1/8												SB 206-18	
SBAK 206-19	1 3/16	1 9/16	6 1/2	4 3/4	1 7/8	19/32	13/16	23/32	3 3/16	1.181	0.315	1/2	SB 206-19	AK 206
SBAK 206-20	1 1/4												SB 206-20	
SBAK 207-20	1 1/4												SB 207-20	
SBAK 207-21	1 5/16	1 13/16	7	5 3/8	1 7/8	19/32	7/8	3/4	3 11/16	1.260	0.335	1/2	SB 207-21	AK 207
SBAK 207-22	1 3/8												SB 207-22	
SBAK 207-23	1 7/16												SB 207-23	
SBAK 208-24	1 1/2	1 15/16	7 1/4	5 13/32	2 1/8	21/32	13/16	25/32	3 27/32	1.339	0.354	1/2	SB 208-24	AK 208
SBAK 209-27	1 11/16	2 1/16	7 3/4	5 63/64	2 5/32	19/32	63/64	29/32	4 11/64	1.622	0.402	1/2	SB 209-27	AK 209
SBAK 209-28	1 3/4												SB 209-28	

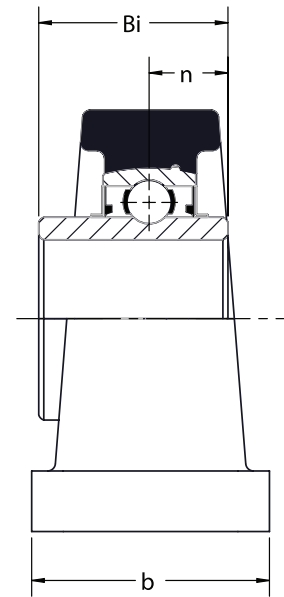
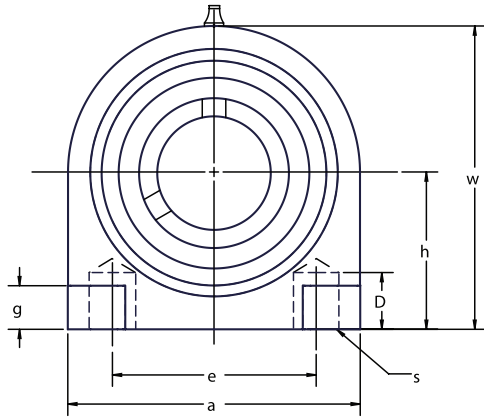
Relubrication Feature is Standard. Note: "Solid Base Housing"

Unit No.	Shaft Dia.	h	a	e	b	S ₁	S ₂	g	w	L	n	m	i	W	Bolt Size In.	Bearing No.	Housing No.
SAAK 204-12	3/4	1 1/4	5	3 3/4	1 1/2	7/16	5/8	9/16	2 17/32	1.221	0.276	0.55	0.3776	1.26	3/8	SA 204-12	AK 204
SAAK 205-14	7/8															SA 205-14	
SAAK 205-15	15/16	1 5/16	5 1/2	4 1/8	1 1/2	1/2	3/4	5/8	2 11/16	1.221	0.295	0.55	0.3740	1.50	3/8	SA 205-15	AK 205
SAAK 205-16	1															SA 205-16	
SAAK 206-18	1 1/8															SA 206-18	
SAAK 206-19	1 3/16	1 9/16	6 1/2	4 3/4	1 7/8	19/32	13/16	23/32	3 3/16	1.406	0.315	0.58	0.4677	1.75	1/2	SA 206-19	AK 206
SAAK 206-20	1 1/4															SA 206-20	
SAAK 207-20	1 1/4															SA 207-20	
SAAK 207-21	1 5/16	1 13/16	7	5 3/8	1 7/8	19/32	7/8	3/4	3 11/16	1.532	0.335	0.63	0.5315	2.19	1/2	SA 207-21	AK 207
SAAK 207-22	1 3/8															SA 207-22	
SAAK 207-23	1 7/16															SA 207-23	
SAAK 208-24	1 1/2	1 15/16	7 1/4	5 13/32	2 1/8	21/32	13/16	25/32	3 27/32	1.721	0.354	0.76	0.5323	2.38	1/2	SA 208-24	AK 208

Relubrication Feature is Standard. Note: "Solid Base Housing"

UCPA 200 Series

Pillow Blocks Tapped Base

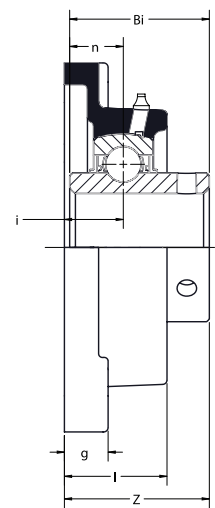
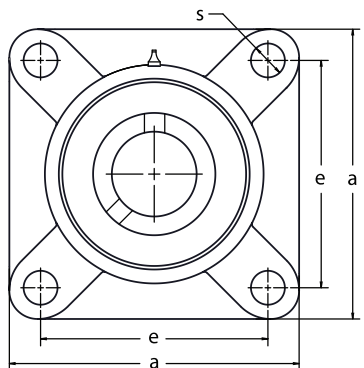


Unit No.	Shaft Dia.	Dimensions (in)							D. Min. Tap Depth	Bi	n	Bearing No.	Housing No.	Wt. LBS
		h	a	e	b	s	g	w						
UCPA 204-12	3/4	1 3/16	3	2 3/64	1 9/16	3/8-16	7/16	2 7/16	1/2	1.221	.500	UC 204-12	PA 204	1.20
UCPA 205-14	7/8											UC 205-14		1.40
UCPA 205-15	15/16	1 7/16	3 5/16	2 13/64	1 25/32	3/8-16	15/32	2 27/32	1/2	1.343	.563	UC 205-15	PA 205	1.37
UCPA 205-16	1											UC 205-16		1.34
UCPA 206-18	1 1/8											UC 206-18		2.35
UCPA 206-19	1 3/16	1 11/16	3 11/16	2 19/32	1 31/32	7/16-14	15/32	3 5/16	5/8	1.500	.626	UC 206-19	PA 206	2.32
UCPA 206-20	1 1/4											UC 206-20		2.29
UCPA 207-20	1 1/4											UC 207-20		3.13
UCPA 207-21	1 5/16											UC 207-21		3.08
UCPA 207-22	1 3/8	1 7/8	4 11/32	3 5/32	2 5/32	1/2-13	1/2	3 3/4	3/4	1.689	.689	UC 207-22	PA 207	3.03
UCPA 207-23	1 7/16											UC 207-23		2.97
UCPA 208-24	1 1/2	1 15/16	4 9/16	3 5/16	2 9/32	1/2-13	1/2	3 15/16	3/4	1.937	.748	UC 208-24	PA 208	3.67
UCPA 209-26	1 5/8											UC 209-26		4.75
UCPA 209-27	1 11/16	2 9/64	4 23/32	3 35/64	2 3/8	1/2-13	1/2	4 1/4	3/4	1.937	.748	UC 209-27	PA 209	4.68
UCPA 209-28	1 3/4											UC 209-28		4.61
UCPA 210-30	1 7/8	2 1/4	5 1/8	3 45/64	2 17/32	5/8-11	9/16	4 9/16	7/8	2.032	.748	UC 210-30	PA 210	5.66
UCPA 210-31	1 15/16											UC 210-31		5.57

Relubrication Feature is Standard.

UCF 200 Series

Standard Four Bolt Flange Units



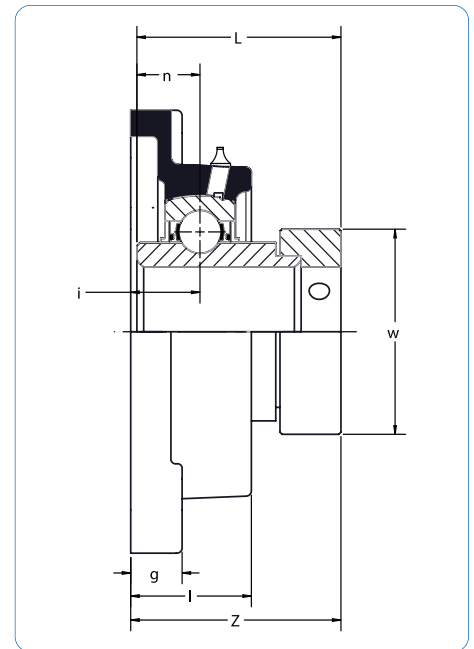
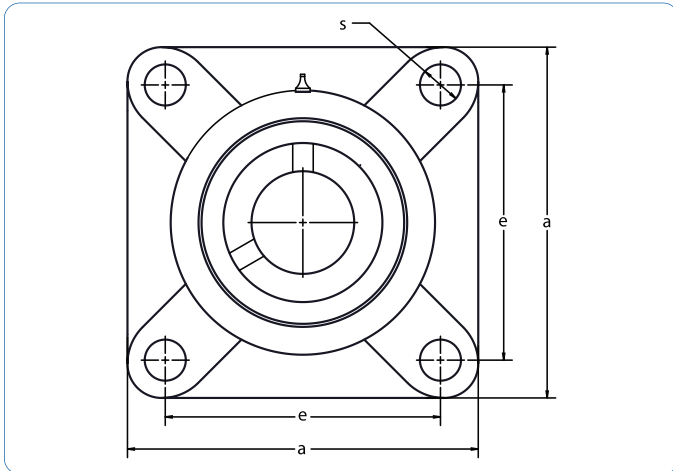
Dimensions (in)

Unit No.	Shaft Dia.	a	e	i	g	l	s	Z	Bi	n	Bearing No.	Housing No.	Wt. LBS
UCF 202-10	5/8	3	2 1/8	.592	3/8	1	27/64	1 5/16	1.221	0.500	UC 202-10	F 202	1.32
UCF 204-12	3/4	3 3/8	2 1/2	.592	7/16	1	27/64	1 5/16	1.221	0.500	UC 204-12	F 204	1.30
UCF 205-14	7/8	3 3/4	2 3/4	.631	1/2	1 1/16	15/32	1 13/32	1.343	0.560	UC 205-14	F 205	1.87
UCF 205-15	15/16										UC 205-15		1.83
UCF 205-16	1										UC 205-16		1.81
UCF 206-18	1 1/8	4 1/4	3 1/4	.720	9/16	1 7/32	15/32	1 19/32	1.500	0.626	UC 206-18	F 206	2.51
UCF 206-19	1 3/16										UC 206-19		2.43
UCF 206-20	1 1/4										UC 206-20		2.38
UCF 207-20	1 1/4	4 19/32	3 5/8	.750	19/32	1 11/32	17/32	1 3/4	1.689	0.689	UC 207-20	F 207	3.37
UCF 207-21	1 5/16										UC 207-21		3.33
UCF 207-22	1 3/8										UC 207-22		3.26
UCF 207-23	1 7/16										UC 207-23		3.20
UCF 208-24	1 1/2	5 1/8	4	.834	19/32	1 13/32	37/64	2 1/64	1.937	0.748	UC 208-24	F 208	4.59
UCF 209-26	1 5/8	5 3/8	4 1/8	.874	5/8	1 1/2	37/64	2 1/16	1.937	0.748	UC 209-26	F 209	5.40
UCF 209-27	1 11/16										UC 209-27		5.31
UCF 209-28	1 3/4										UC 209-28		5.22
UCF 210-30	1 7/8	5 5/8	4 3/8	.874	5/8	1 9/16	37/64	2 5/32	2.032	0.748	UC 210-30	F 210	5.69
UCF 210-31	1 15/16										UC 210-31		5.47
UCF 211-32	2	6 3/8	5 1/8	.998	23/32	1 11/16	45/64	2 5/16	2.189	0.874	UC 211-32	F 211	7.94
UCF 211-34	2 1/8										UC 211-34		7.69
UCF 211-35	2 3/16										UC 211-35		7.54
UCF 212-36	2 1/4	6 7/8	5 5/8	1.156	23/32	1 7/8	45/64	2 23/32	2.563	1.000	UC 212-36	F 212	10.43
UCF 212-38	2 3/8										UC 212-38		10.10
UCF 212-39	2 7/16										UC 212-39		9.94
UCF 213-40	2 1/2	7 3/8	5 7/8	1.187	7/8	1 31/32	45/64	2 3/4	2.563	1.000	UC 213-40	F 213	12.39
UCF 214-44	2 3/4	7 19/32	6	1.221	7/8	2 1/8	45/64	2 31/32	2.937	1.189	UC 214-44	F 214	13.51
UCF 215-47	2 15/16	7 7/8	6 1/4	1.342	7/8	2 7/32	45/64	3 3/32	3.063	1.311	UC 215-47	F 215	15.40

Relubrication Feature is Standard.

HCFS 200 Series

Flange Units Standard 4 Bolt



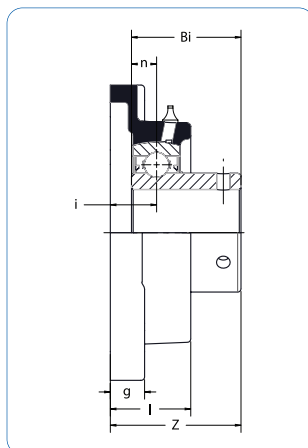
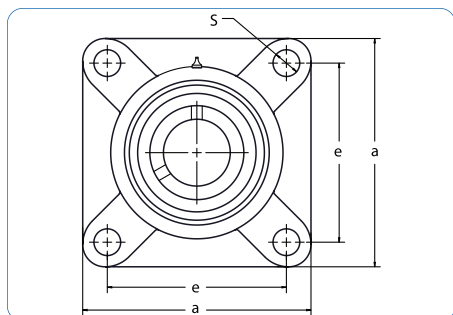
Dimensions (in)

Unit No.	Shaft Dia.	a	e	i	g	l	S	Z	L	n	W	Bolt Size In.	Bearing No.	Housing No.
HCFS 204-12	3/4	3 3/8	2 1/2	.750	3/8	1 15/16	15/32	1.7953	1.721	0.673	1.26	3/8	HC 204-12	FS 204
HCFS 205-14	7/8												HC 205-14	
HCFS 205-15	15/16	3 3/4	2 3/4	.826	7/16	1 3/8	15/32	1.8819	1.748	0.689	1.50	3/8	HC 205-15	FS 205
HCFS 205-16	1												HC 205-16	
HCFS 206-18	1 1/8												HC 206-18	
HCFS 206-19	1 3/16	4 1/4	3 1/4	.826	5/8	1 15/32	17/32	2.0079	1.906	0.721	1.75	7/16	HC 206-19	FS 206
HCFS 206-20	1 1/4												HC 206-20	
HCFS 207-20	1 1/4												HC 207-20	
HCFS 207-21	1 5/16	4 5/8	3 5/8	.906	1/2	1 1/2	17/32	2.1772	2.012	0.740	2.19	7/16	HC 207-21	FS 207
HCFS 207-22	1 3/8												HC 207-22	
HCFS 207-23	1 7/16												HC 207-23	
HCFS 208-24	1 1/2	5 1/8	4	1	21/32	1 17/32	37/64	2.3740	2.217	0.843	2.37	1/2	HC 208-24	FS 208
HCFS 209-26	1 5/8												HC 209-26	
HCFS 209-27	1 11/16	5 3/8	4 1/8	1	23/32	1 9/16	21/32	2.3740	2.217	0.843	2.50	9/16	HC 209-27	FS 209
HCFS 209-28	1 3/4												HC 209-28	
HCFS 210-30	1 7/8	5 5/8	4 3/8	1.142	5/8	1 13/16	21/32	2.6417	2.469	0.964	2.75	9/16	HC 210-30	FS 210
HCFS 210-31	1 15/16												HC 210-31	
HCFS 211-32	2												HC 211-32	
HCFS 211-34	2 1/8	6 3/8	5 1/8	1.260	11/16	1 31/32	45/64	2.9803	2.811	1.095	3.00	5/8	HC 211-34	FS 211
HCFS 211-35	2 3/16												HC 211-35	
HCFS 212-36	2 1/4												HC 212-36	
HCFS 212-38	2 3/8	6 7/8	5 5/8	1.343	11/16	2 5/32	45/64	3.1890	3.063	1.221	3.31	5/8	HC 212-38	FS 212
HCFS 212-39	2 7/16												HC 212-39	

Relubrication Feature is Standard.

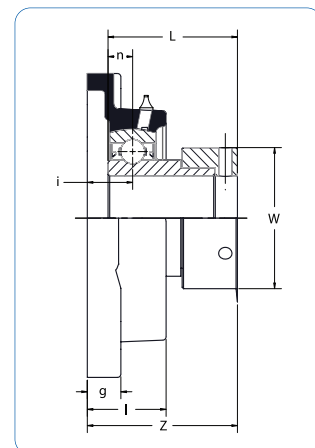
SBF/SAF 200 Series

Flange Units Standard 4 Bolt



◀ SBF

SAF ▶



Dimensions (in)

Unit No.	Shaft Dia.	a	e	i	g	l	S	Z	Bi	n	Bolt Size In.	Bearing No.	Housing No.
SBF 204-12	3/4	3 3/8	2 1/2	.592	7/16	1	27/64	1.5157	1.221	0.276	3/8	SB 204-12	F 204
SBF 205-14	7/8											SB 205-14	
SBF 205-15	15/16	3 3/4	2 3/4	.631	1/2	1 1/16	15/32	1.5551	1.221	0.295	3/8	SB 205-15	F 205
SBF 205-16	1											SB 205-16	
SBF 206-18	1 1/8											SB 206-18	
SBF 206-19	1 3/16	4 1/4	3 1/4	.71975	9/16	1 7/32	15/32	1.7717	1.406	0.315	3/8	SB 206-19	F 206
SBF 206-20	1 1/4											SB 206-20	
SBF 207-20	1 1/4											SB 207-20	
SBF 207-21	1 5/16	4 19/32	3 5/8	.750	19/32	1 11/32	17/32	1.9094	1.532	0.335	7/16	SB 207-21	F 207
SBF 207-22	1 3/8											SB 207-22	
SBF 207-23	1 7/16											SB 207-23	
SBF 208-24	1 1/2	5 1/8	4	.834	19/32	1 13/32	37/64	2.1220	1.721	0.354	1/2	SB 208-24	F 208
SBF 209-26	1 5/8											SB 209-26	
SBF 209-27	1 11/16	5 3/8	4 1/8	.874	5/8	1 1/2	37/64	2.1614	1.721	0.374	1/2	SB 209-27	F 209
SBF 209-28	1 3/4											SB 209-28	
SBF 210-30	1 7/8	5 5/8	4 3/8	.873	5/8	1 9/16	37/64	2.1614	1.721	0.394	1/2	SB 210-30	F 210
SBF 210-31	1 15/16											SB 210-31	

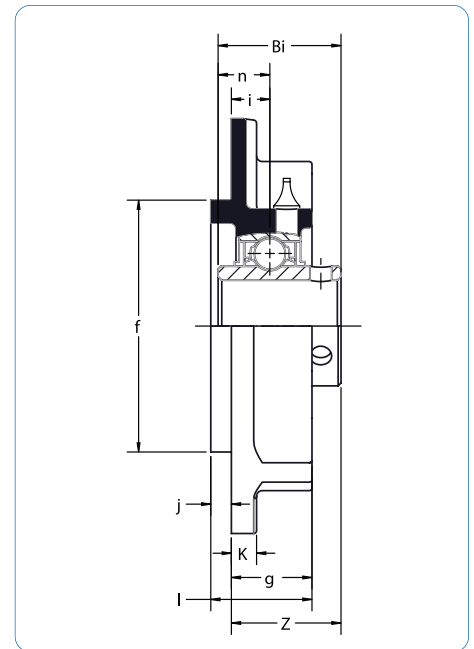
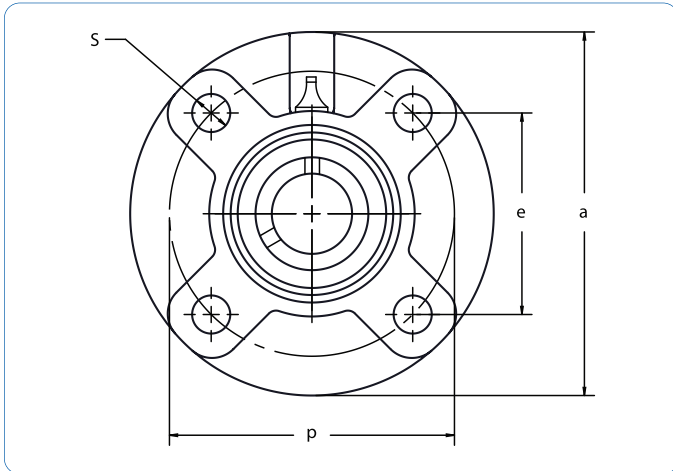
Relubrication Feature is Standard.

Unit No.	Shaft Dia.	a	e	i	g	l	S	Z	L	n	W	Bolt Size In.	Bearing No.	Housing No.
SAF 204-12	3/4	3 3/8	2 1/2	.592	7/16	1	27/64	1.2795	0.984	0.276	1.3110	3/8	SA 204-12	F 204
SAF 205-14	7/8												SA 205-14	
SAF 205-15	15/16	3 3/4	2 3/4	.631	1/2	1 1/16	15/32	1.3976	1.063	0.295	1.5000	3/8	SA 205-15	F 205
SAF 205-16	1												SA 205-16	
SAF 206-18	1 1/8												SA 206-18	
SAF 206-19	1 3/16	4 1/4	3 1/4	.71975	9/16	1 7/32	15/32	1.5472	1.181	0.315	1.7520	3/8	SA 206-19	F 206
SAF 206-20	1 1/4												SA 206-20	
SAF 207-20	1 1/4												SA 207-20	
SAF 207-21	1 5/16	4 19/32	3 5/8	.750	19/32	1 11/32	17/32	1.6378	1.260	0.335	2.1890	7/16	SA 207-21	F 207
SAF 207-22	1 3/8												SA 207-22	
SAF 207-23	1 7/16												SA 207-23	
SAF 208-24	1 1/2	5 1/8	4	.834	19/32	1 13/32	37/64	1.8976	1.496	0.354	2.3740	1/2	SA 208-24	F 208

Relubrication Feature is Standard.

UCFC 200 Series

Flange Units Cartridge 4 Bolt



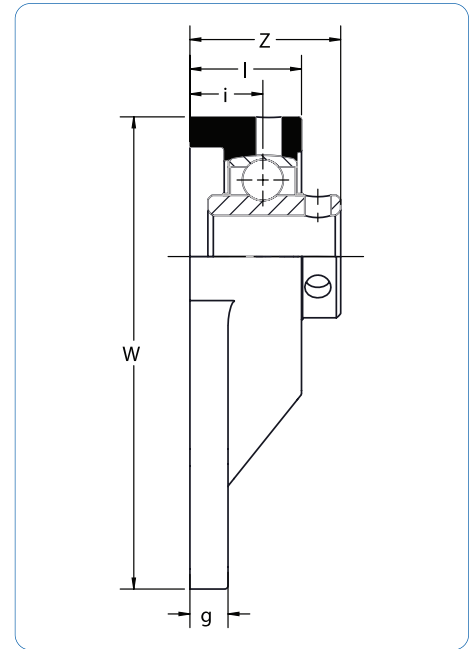
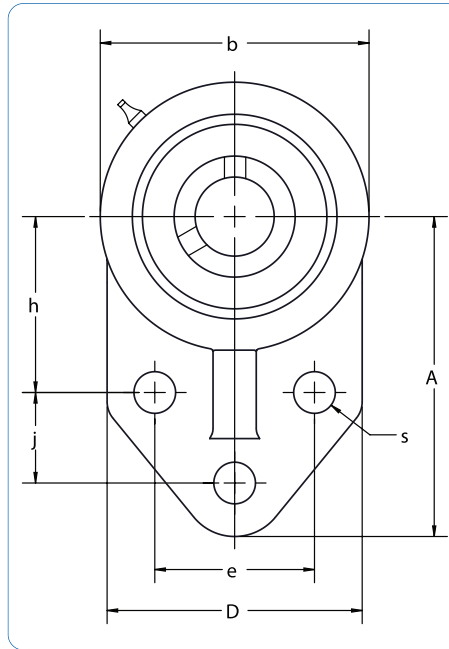
Dimensions (in)

Unit No.	Shaft Dia.	a	p	e	i	l	S	j	K	g	f	z	Bi	n	Bolt Size In.	Bearing No.	Housing No.
UCFC 204-12	3/4	3 15/16	3 5/64	2 11/64	25/64	1	15/32	13/64	9/32	13/16	2.4409	1.1102	1.221	0.500	3/8	UC 204-12	FC 204
UCFC 205-14	7/8															UC 205-14	
UCFC 205-15	15/16	4 17/32	3 35/64	2 1/2	25/64	1 1/16	15/32	15/64	9/32	53/64	2.7559	1.1654	1.343	0.563	3/8	UC 205-15	FC 205
UCFC 205-16	1															UC 205-16	
UCFC 206-18	1 1/8															UC 206-18	
UCFC 206-19	1 3/16	4 9/32	3 15/16	2 25/32	25/64	1 7/32	15/32	5/16	5/16	29/32	3.1496	1.2638	1.500	0.626	3/8	UC 206-19	FC 206
UCFC 206-20	1 1/4															UC 206-20	
UCFC 207-20	1 1/4															UC 207-20	
UCFC 207-21	1 5/16	5 5/16	4 21/64	3 1/16	7/16	1 11/32	35/64	5/16	11/32	1 1/32	3.5433	1.4370	1.689	0.689	7/16	UC 207-21	FC 207
UCFC 207-22	1 3/8															UC 207-22	
UCFC 207-23	1 7/16															UC 207-23	
UCFC 208-24	1 1/2	5 23/32	4 23/32	3 11/32	7/16	1 13/32	35/64	25/64	11/32	1 1/32	3.9370	1.6260	1.937	0.748	7/16	UC 208-24	FC 208
UCFC 209-26	1 5/8															UC 209-26	
UCFC 209-27	1	6 5/16	5 13/64	3 43/64	25/64	1 1/2	5/8	15/32	9/16	1 1/32	4.1388	1.5787	1.937	0.748	1/2	UC 209-27	FC 209
UCFC 209-28	1 1/16															UC 209-28	
UCFC 210-30	1 7/8	6 1/2	5 7/16	3 27/32	25/64	1 9/16	5/8	15/32	9/16	1 7/64	4.3307	1.6732	2.032	0.748	1/2	UC 210-30	FC 210
UCFC 210-31	1 15/16															UC 210-31	
UCFC 211-32	2															UC 211-32	
UCFC 211-34	2 1/8	7 9/32	5 29/32	4 11/64	33/64	1 11/16	3/4	15/32	19/32	1 7/32	4.9215	1.8307	2.189	0.874	5/8	UC 211-34	FC 211
UCFC 211-35	2 3/16															UC 211-35	
UCFC 212-36	2 1/4															UC 212-36	
UCFC 212-38	2 3/8	7 11/16	6 19/64	4 29/64	43/64	1 7/8	3/4	15/32	19/32	1 27/64	5.3150	2.2362	2.563	1.000	5/8	UC 212-38	FC 212
UCFC 212-39	2 7/16															UC 212-39	

Relubrication Feature is Standard.

UCFB 200 Series

Flange Bracket 3 Bolt



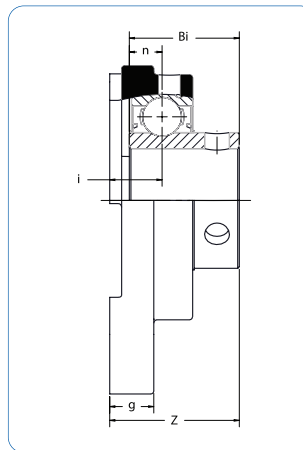
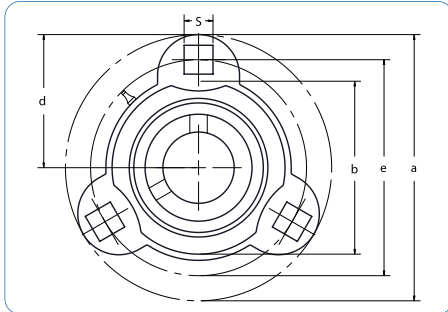
Dimensions (in)

Unit No.	Shaft Dia.	w	A	b	D	i	l	s	g	h	j	e	z	Bearing No.	Housing No.	Wt. LBS
UCFB 204-12	3/4	4 1/4	3	2 1/2	2 3/8	5/8	1	25/64	5/16	1	7/8	1 1/2	1.347	UC 204-12	FB 204	1.45
UCFB 205-14	7/8													UC 205-14		
UCFB 205-15	15/16	4 3/4	3 3/8	2 3/4	2 1/2	21/32	1 1/8	25/64	3/8	1 13/16	1 1/8	1 5/8	1.433	UC 205-15	FB 205	2.00
UCFB 205-16	1													UC 205-16		
UCFB 206-18	1 1/8													UC 206-18		
UCFB 206-19	1 3/16	5 3/8	3 3/4	3 1/4	2 3/4	47/64	1 1/4	25/64	3/8	2 1/16	1 1/4	1 7/8	1.610	UC 206-19	FB 206	2.50
UCFB 206-20	1 1/4													UC 206-20		
UCFB 207-20	1 1/4													UC 207-20		
UCFB 207-21	1 5/16													UC 207-21		
UCFB 207-22	1 3/8	6 1/8	4 1/4	3 3/4	3 1/4	53/64	17/16	33/64	1/2	2 3/8	1 1/4	2	1.827	UC 207-22	FB 207	2.90
UCFB 207-23	1 7/16													UC 207-23		
UCFB 208-24	1 1/2	6 15/32	4 1/2	3 15/16	3 1/16	53/64	1	15/32	5/8	2 3/8	1 5/8	1	2.016	UC 208-24	FB 208	3.50
UCFB 209-26	1 5/8													UC 209-26		
UCFB 209-27	1 11/16	6 27/32	4 3/4	4 3/16	3 5/32	53/64	1 1/2	15/32	23/32	2 9/16	1 11/16	2 1/8	2.016	UC 209-27	FB 209	4.90
UCFB 209-28	1 3/4													UC 209-28		
UCFB 210-30	1 7/8													UC 210-30		
UCFB 210-31	1 15/16	7 1/2	5 3/16	4 5/8	4	53/64	1 1/2	33/64	1/2	2 15/16	1 5/8	2 3/4	2.110	UC 210-31	FB 210	5.40

Relubrication Feature is Standard.

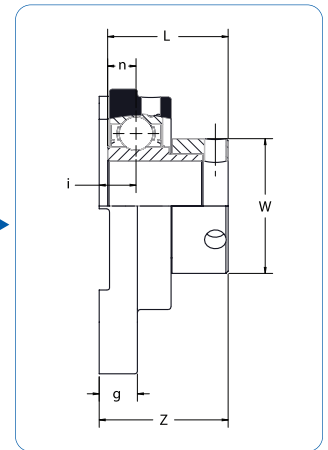
SBF3X/SAF3X 200 Series

Flange Units Ductile 3 Bolt



◀ SBF3X

SAF3X ▶



Dimensions (in)

Unit No.	Shaft Dia.	a	e	i	b	d	g	s	Z	Bi	n	Bolt Size In.	Bearing No.	Housing No.
SBF3X 202-10	5/8	3 3/16	2 1/2	.3180	2 3/32	1 19/32	13/32	9/32	0.99	0.886	0.236	1/4	SB 202-10	F3X 202
SBF3X 204-12	3/4	3 9/16	2 13/16	.4370	2 13/64	1 25/32	7/16	11/32	1.13	0.984	0.276	5/16	SB 204-12	F3X 204
SBF3X 205-14	7/8												SB 205-14	
SBF3X 205-15	15/16	3 3/4	3	.4370	2 13/16	1 7/8	1/2	11/32	1.20	1.063	0.295	5/16	SB 205-15	F3X 205
SBF3X 205-16	1												SB 205-16	
SBF3X 206-18	1 1/8												SB 206-18	
SBF3X 206-19	1 3/16	4 9/16	3 9/16	.4370	3	2 9/32	19/32	13/32	1.26	1.181	0.315	3/8	SB 206-19	F3X 206
SBF3X 206-20	1 1/4												SB 206-20	
SBF3X 207-20	1 1/4												SB 207-20	
SBF3X 207-21	1 5/16	4 13/16	3 15/16	.5000	3 15/32	2 13/32	19/32	13/32	1.39	1.260	0.335	3/8	SB 207-21	F3X 207
SBF3X 207-22	1 3/8												SB 207-22	
SBF3X 207-23	1 7/16												SB 207-23	

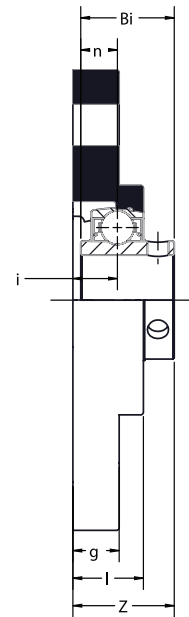
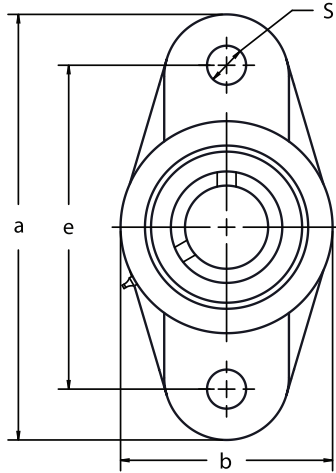
Relubrication Feature is Standard.

Unit No.	Shaft Dia.	a	e	i	b	d	g	s	Z	L	n	W	Bolt Size In.	Bearing No.	Housing No.
SAF3X 202-10	5/8	3 3/16	2 1/2	.3180	2 3/32	1 19/32	13/32	9/32	1.23	1.125	0.236	1.3110	1/4	SA 202-10	F3X 202
SAF3X 204-12	3/4	3 9/16	2 13/16	.4370	2 13/64	1 25/32	7/16	11/32	1.36	1.221	0.276	1.5000	5/16	SA 204-12	F3X 204
SAF3X 205-14	7/8													SA 205-14	
SAF3X 205-15	15/16	3 3/4	3	.4370	2 13/16	1 7/8	1/2	11/32	1.36	1.221	0.295	1.7520	5/16	SA 205-15	F3X 205
SAF3X 205-16	1													SA 205-16	
SAF3X 206-18	1 1/8													SA 206-18	
SAF3X 206-19	1 3/16	4 9/16	3 9/16	.4370	3	2 9/32	19/32	13/32	1.49	1.406	0.315	2.1890	3/8	SA 206-19	F3X 206
SAF3X 206-20	1 1/4													SA 206-20	
SAF3X 207-20	1 1/4													SA 207-20	
SAF3X 207-21	1 5/16	4 13/16	3 15/16	.5000	3 15/32	2 13/32	19/32	13/32	1.66	1.532	0.335	2.3740	3/8	SA 207-21	F3X 207
SAF3X 207-22	1 3/8													SA 207-22	
SAF3X 207-23	1 7/16													SA 207-23	

Relubrication Feature is Standard.

UCFL 200 Series

Standard 2 Bolt Flange Unit



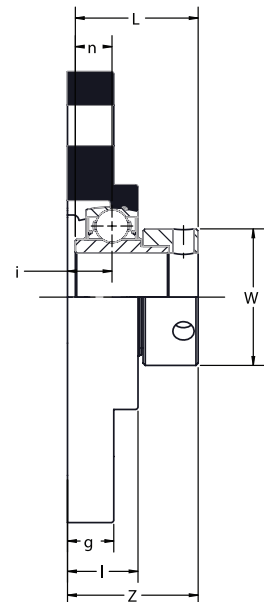
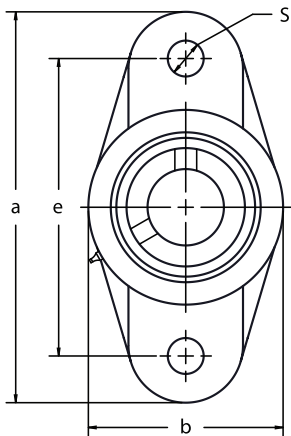
Dimensions (in)

Unit No.	Shaft Dia.	a	e	i	g	l	s	b	Z	Bi	n	Bearing No.	Housing No.	Wt. LBS
UCFL 202-10	5/8	3 7/8	3	.594	7/16	1	27/64	2 1/8	1.3150	1.221	.500	UC 202-10	FL 202	1.20
UCFL 204-12	3/4	4 7/16	3 17/32	.591	7/16	1	27/64	2 3/8	1.3110	1.221	.500	UC 204-12	FL 204	1.04
UCFL 205-14	7/8											UC 205-14		1.52
UCFL 205-15	15/16	5 1/8	3 57/64	.630	1/2	1 1/16	17/32	2 11/16	1.4053	1.343	.563	UC 205-15	FL 205	1.48
UCFL 205-16	1											UC 205-16		1.46
UCFL 206-18	1 1/8											UC 206-18		2.38
UCFL 206-19	1 3/16	5 13/16	4 19/32	.709	1/2	1 7/32	37/64	3 5/32	1.5827	1.500	.626	UC 206-19	FL 206	2.29
UCFL 206-20	1 1/4											UC 206-20		2.25
UCFL 207-20	1 1/4											UC 207-20		3.00
UCFL 207-21	1 5/16	6 11/32	5 1/8	.748	9/16	1 11/32	37/64	3 17/32	1.7480	1.689	.689	UC 207-21	FL 207	2.95
UCFL 207-22	1 3/8											UC 207-22		2.89
UCFL 207-23	1 7/16											UC 207-23		2.82
UCFL 208-24	1 1/2	6 7/8	5 21/32	.828	9/16	1 13/32	37/64	3 15/16	2.0157	1.937	.748	UC 208-24	FL 208	4.14
UCFL 209-26	1 5/8											UC 209-26		4.54
UCFL 209-27	1 11/16	7 13/32	5 27/32	.866	19/32	1 1/2	21/32	4 1/4	2.0551	1.937	.748	UC 209-27	FL 209	4.45
UCFL 209-28	1 3/4											UC 209-28		4.37
UCFL 210-30	1 7/8	7 3/4	6 3/16	.866	19/32	1 9/16	21/32	4 17/32	2.1496	2.032	.748	UC 210-30	FL 210	5.31
UCFL 210-31	1 15/16											UC 210-31		4.97
UCFL 211-32	2											UC 211-32		7.28
UCFL 211-34	2 1/8	8 13/16	7 1/4	1	23/32	1 11/16	45/64	5 1/8	2.3150	2.189	.874	UC 211-34	FL 211	7.03
UCFL 211-35	2 3/16											UC 211-35		6.90

Relubrication Feature is Standard.

HCFT 200 Series

Flange Units Standard 2 Bolt



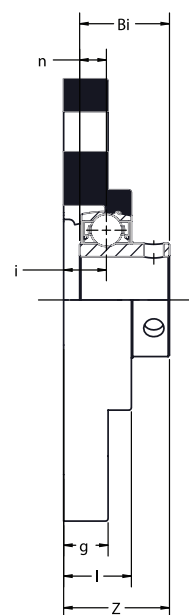
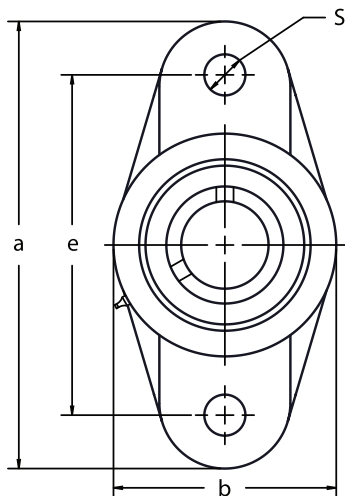
Dimensions (in)

Unit No.	Shaft Dia.	a	e	i	g	l	S	b	Z	L	n	W	Bolt Size In.	Bearing No.	Housing No.
HCFT 204-12	3/4	4 7/16	3 17/32	.75	7/16	1 1/4	15/32	2 3/8	1.7953	1.721	0.673	1.26	3/8	HC 204-12	FT 204
HCFT 205-14	7/8													HC 205-14	
HCFT 205-15	15/16	4 7/8	3 57/64	.75	17/32	1 5/16	15/32	2 3/4	1.8110	1.748	0.689	1.50	3/8	HC 205-15	FT 205
HCFT 205-16	1													HC 205-16	
HCFT 206-18	1 1/8													HC 206-18	
HCFT 206-19	1 3/16	5 9/16	4 19/32	.826	17/32	1 3/8	15/32	3 1/8	2.0118	1.906	0.721	1.75	3/8	HC 206-19	FT 206
HCFT 206-20	1 1/4													HC 206-20	
HCFT 207-20	1 1/4													HC 207-20	
HCFT 207-21	1 5/16	6 1/8	5 1/8	.906	9/16	1 15/32	37/64	3 5/8	2.1772	2.012	0.740	2.19	1/2	HC 207-21	FT 207
HCFT 207-22	1 3/8													HC 207-22	
HCFT 207-23	1 7/16													HC 207-23	
HCFT 208-24	1 1/2	6 3/4	5 21/32	1	9/16	1 17/32	17/32	4 1/8	2.3740	2.217	0.843	2.37	7/16	HC 208-24	FT 208
HCFT 209-26	1 5/8													HC 209-26	
HCFT 209-27	1 11/16	7 1/16	5 27/32	1	9/16	1 3/4	21/32	4 3/8	2.3740	2.217	0.843	2.50	9/16	HC 209-27	FT 209
HCFT 209-28	1 3/4													HC 209-28	
HCFT 210-30	1 7/8	7 7/16	6 3/16	1.181	9/16	1 27/32	21/32	4 9/16	2.6811	2.469	0.969	2.75	9/16	HC 210-30	FT 210
HCFT 210-31	1 15/16													HC 210-31	
HCFT 211-32	2													HC 211-32	
HCFT 211-34	2 1/8	8 1/2	7 1/4	1.299	13/16	1 31/32	21/32	5 1/4	3.0315	2.811	1.095	3.00	9/16	HC 211-34	FT 211
HCFT 211-35	2 3/16													HC 211-35	
HCFT 212-36	2 1/4													HC 212-36	
HCFT 212-38	2 3/8	9 1/4	7 15/16	1.344	13/16	2 3/32	21/32	5 7/16	3.1890	3.063	1.221	3.31	9/16	HC 212-38	FT 212
HCFT 212-39	2 7/16													HC 212-39	

Relubrication Feature is Standard.

SBFL 200 Series

Flange Units Standard 2 Bolt



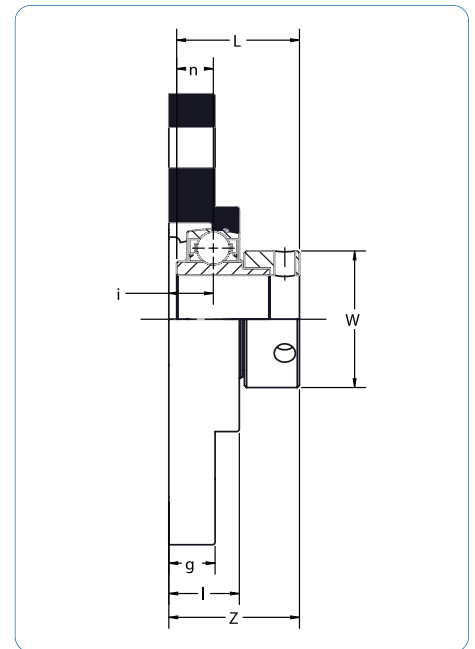
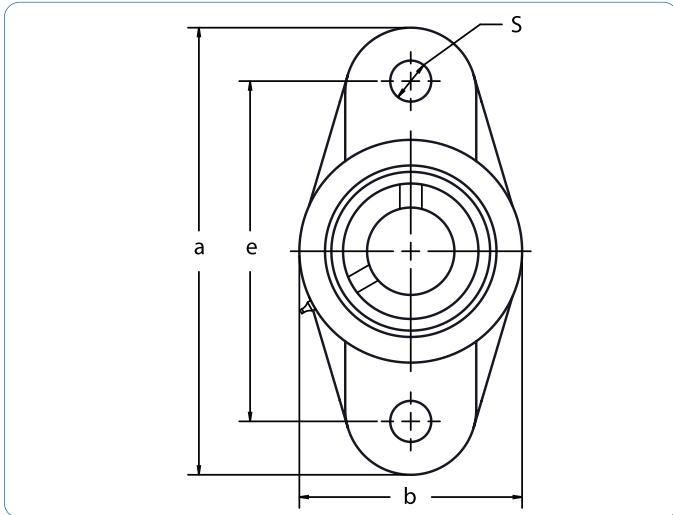
Dimensions (in)

Unit No.	Shaft Dia.	a	e	i	g	l	S	b	Z	Bi	n	Bolt Size In.	Bearing No.	Housing No.
SBFL 202-10	5/8	3 29/32	3	.515	25/64	55/64	27/64	2 1/8	1.1457	.866	.236	3/8	SB 202-10	FL 202
SBFL 204-12	3/4	4 7/16	3 17/32	.591	7/16	1	27/64	2 3/8	1.2795	.984	.276	3/8	SB 204-12	FL 204
SBFL 205-14	7/8												SB 205-14	
SBFL 205-15	15/16	5 1/8	3 57/64	.630	1/2	1 1/16	17/32	2 11/16	1.3976	1.063	.295	7/16	SB 205-15	FL 205
SBFL 205-16	1												SB 205-16	
SBFL 206-18	1 1/8												SB 206-18	
SBFL 206-19	1 3/16	5 13/16	4 19/32	.709	1/2	1 7/32	17/32	3 5/32	1.5354	1.181	.315	7/16	SB 206-19	FL 206
SBFL 206-20	1 1/4												SB 206-20	
SBFL 207-20	1 1/4												SB 207-20	
SBFL 207-21	1 5/16	6 11/32	5 1/8	.748	9/16	1 11/32	37/64	3 17/32	1.6339	1.260	.335	1/2	SB 207-21	FL 207
SBFL 207-22	1 3/8												SB 207-22	
SBFL 207-23	1 7/16												SB 207-23	
SBFL 208-24	1 1/2	6 7/8	5 21/32	.828	9/16	1 13/32	37/64	3 15/16	1.8898	1.339	.354	1/2	SB 208-24	FL 208
SBFL 209-26	1 5/8												SB 209-26	
SBFL 209-27	1 11/16	7 13/32	5 27/32	.866	19/32	1 1/2	21/32	4 1/4	1.8740	1.622	.402	9/16	SB 209-27	FL 209
SBFL 209-28	1 3/4												SB 209-28	

Relubrication Feature is Standard.

SAFL 200 Series

Flange Units Standard 2 Bolt



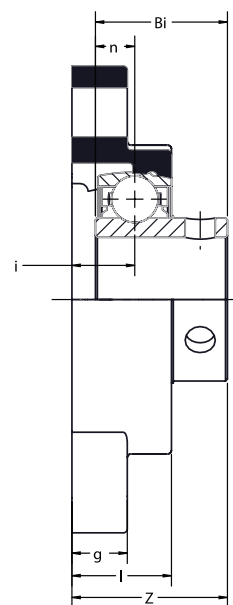
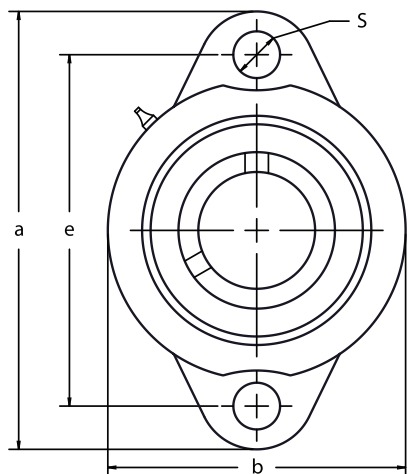
Dimensions (in)

Unit No.	Shaft Dia.	a	e	i	g	l	S	b	Z	L	n	W	Bolt Size In.	Bearing No.	Housing No.
SAFL 204-12	3/4	4 7/16	3 17/32	.591	7/16	1	27/64	2 3/8	1.5157	1.221	.276	1.26	3/8	SA 204-12	FL 204
SAFL 205-14	7/8													SA 205-14	
SAFL 205-15	15/16	5 1/8	3 57/64	.630	1/2	1 1/16	17/32	2 11/16	1.5551	1.221	.295	1.50	7/16	SA 205-15	FL 205
SAFL 205-16	1													SA 205-16	
SAFL 206-18	1 1/8													SA 206-18	
SAFL 206-19	1 3/16	5 13/16	4 19/32	.709	1/2	1 7/32	17/32	3 5/32	1.7598	1.406	.315	1.75	7/16	SA 206-19	FL 206
SAFL 206-20	1 1/4													SA 206-19	
SAFL 207-20	1 1/4													SA 207-20	
SAFL 207-21	1 5/16	6 11/32	5 1/8	.748	9/16	1 11/32	37/64	3 17/32	1.9055	1.532	.335	2.19	1/2	SA 207-21	FL 207
SAFL 207-22	1 3/8													SA 207-22	
SAFL 207-23	1 7/16													SA 207-23	
SAFL 208-24	1 1/2	6 7/8	5 21/32	.828	9/16	1 13/32	37/64	3 15/16	2.1142	1.721	.354	2.38	1/2	SA 208-24	FL 208
SAFL 209-26	1 5/8													SA 209-26	
SAFL 209-27	1 11/16	7 13/32	5 27/32	.866	19/32	1 1/2	21/32	4 1/4	2.1535	1.721	.374	2.50	9/16	SA 209-27	FL 209
SAFL 209-28	1 3/4													SA 209-28	

Relubrication Feature is Standard.

SBLF 200 Series

Light Duty 2 Bolt Flange Units



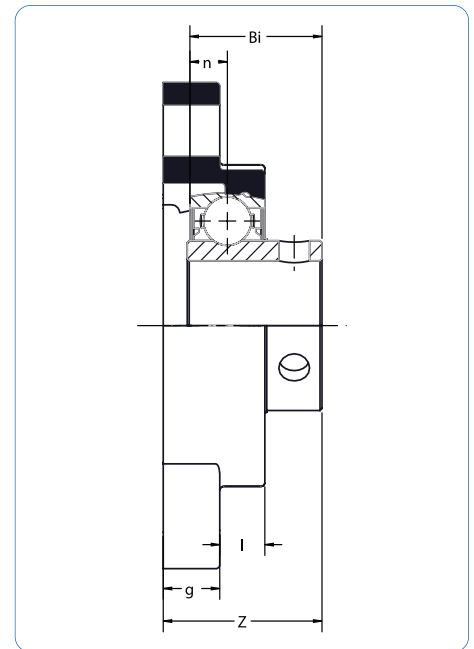
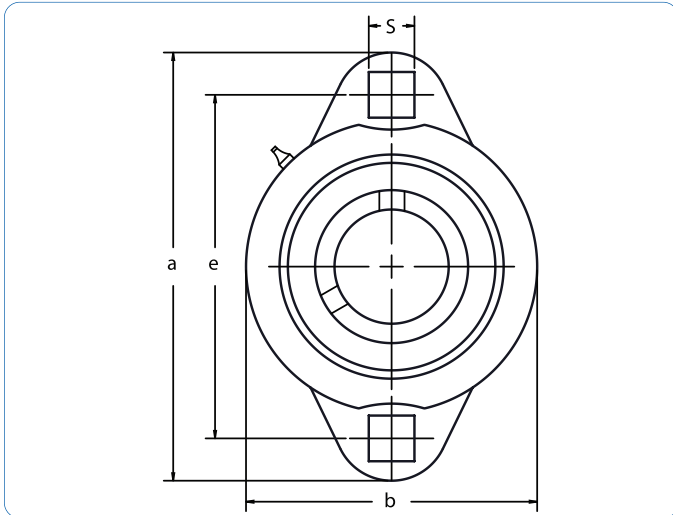
Dimensions (in)

Unit No.	Shaft Dia.	a	e	i	g	l	s	b	Z	Bi	n	Bearing No.	Housing No.	Wt. LBS
SBLF 204-12	3/4	3 17/32	2 13/16	.438	7/16	25/32	25/64	2 13/32	1.125	.984	.276	SB 204-12	LF 204	.66
SBLF 205-14	7/8	3 3/4	2 63/64	.438	7/16	25/32	25/64	2 17/32	1.205	1.063	.295	SB 205-14	LF 205	.86
SBLF 205-15	15/16											SB 205-15		
SBLF 205-16	1											SB 205-16		
SBLF 206-18	1 1/8	4 7/16	3 9/16	.469	15/32	7/8	15/32	3	1.300	1.181	.315	SB 206-18	LF 206	1.25
SBLF 206-19	1 3/16											SB 206-19		
SBLF 206-20	1 1/4											SB 206-20		
SBLF 207-20	1 1/4	4 13/16	3 15/16	.516	33/64	15/16	15/32	3 1/2	1.402	1.260	.335	SB 207-20	LF 207	1.70
SBLF 207-21	1 5/16											SB 207-21		
SBLF 207-22	1 3/8											SB 207-22		
SBLF 207-23	1 7/16											SB 207-23		

Relubrication Feature is Standard.

SBFX 200 Series

Ductile 2 Bolt Flange Units



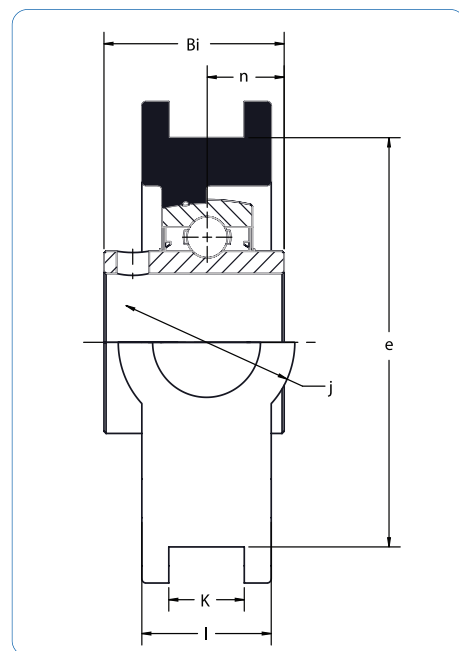
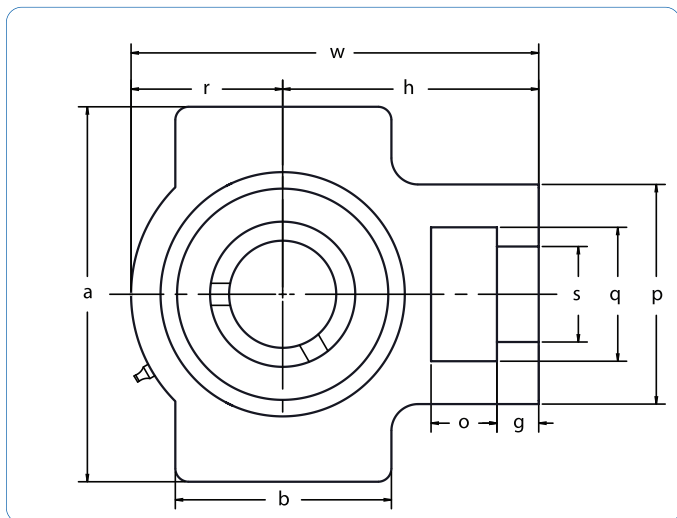
Dimensions (in)

Unit No.	Shaft Dia.	a	e	g	l	s	b	Z	Bi	n	Bearing No.	Housing No.	Wt. LBS
SBFX 202-10	5/8	3 3/16	2 1/2	3/8	5/16	9/32	1 15/16	.0988	.866	.236	SB 202-10	FX 202	.55
SBFX 204-12	3/4	3 9/16	2 13/16	7/16	11/32	11/32	2 1/4	1.126	.984	.276	SB 204-12	FX 204	.64
SBFX 205-14	7/8	3 3/4	3	7/16	25/64	11/32	2 1/2	1.205	1.063	.295	SB 205-14	FX 205	.78
SBFX 205-15	15/16										SB 205-15		
SBFX 205-16	1										SB 205-16		
SBFX 206-18	1 1/8	4 7/16	3 9/16	15/32	27/64	13/32	3 3/32	1.303	1.181	.315	SB 206-18	FX 206	1.10
SBFX 206-19	1 3/16										SB 206-19		
SBFX 206-20	1 1/4										SB 206-20		
SBFX 207-20	1 1/4	4 13/16	3 15/16	1/2	7/16	13/32	3 1/3	1.386	1.260	.335	SB 207-20	FX 207	1.46
SBFX 207-21	1 5/16										SB 207-21		
SBFX 207-22	1 3/8										SB 207-22		
SBFX 207-23	1 7/16										SB 207-23		

Relubrication Feature is Standard.

UCT 200 Series

Take Up Units



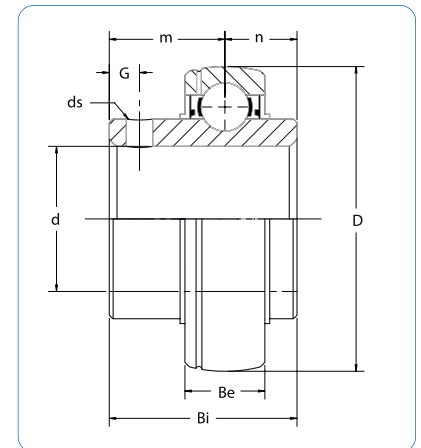
Dimensions (in)

Unit No.	Shaft Dia.	o	g	p	q	s	b	k	e	a	w	j	l	r	h	Bi	n	Bearing No.	Housing No.	Wt. LBS
UCT 204-12	3/4	5/8	13/32	2	1 1/4	3/4	2	17/32	3	3 1/2	3 11/16	1 1/4	13/16	1 5/16	2 13/32	1.221	.500	UC 204-12	T 204	1.81
UCT 205-14	7/8																	UC 205-14		
UCT 205-15	15/16	5/8	13/32	2	1 1/4	3/4	2	17/32	3	3 1/2	3 13/16	1 1/4	15/16	1 3/8	2 7/16	1.343	.563	UC 205-15	T 205	1.87
UCT 205-16	1																	UC 205-16		
UCT 206-18	1 1/8																	UC 206-18		
UCT 206-19	1 3/16	5/8	13/32	2 7/32	1 15/32	55/64	2 1/4	17/32	3 1/2	1 1/32	4 7/16	1 15/32	13/32	1 11/16	2 3/4	1.500	.626	UC 206-19	T 206	2.87
UCT 206-20	1 1/4																	UC 206-20		
UCT 207-20	1 1/4																	UC 207-20		
UCT 207-21	1 5/16																	UC 207-21		
UCT 207-22	1 3/8	5/8	1/2	2 17/32	1 15/32	55/64	2 17/32	17/32	3 1/2	4 1/32	5 3/32	1 15/32	13/16	2	3 1/16	1.689	.689	UC 207-22	T 207	3.77
UCT 207-23	1 7/16																	UC 207-23		
UCT 208-24	1 1/2	3/4	5/8	3 9/32	1 15/16	19/64	3 9/32	11/16	4 1/64	4 1/2	5 21/32	1 15/16	15/16	2 27/32	3 15/32	1.937	.748	UC 208-24	T 208	5.60
UCT 209-26	1 5/8																	UC 209-26		
UCT 209-27	1 11/16	3/4	5/8	3 9/32	1 15/16	19/64	3 9/32	11/16	4 1/64	4 19/32	5 21/32	1 15/16	13/8	2 1/4	3 7/16	1.937	.748	UC 209-27	T 209	5.71
UCT 209-28	1 3/4																	UC 209-28		
UCT 210-30	1 7/8																	UC 210-30		
UCT 210-31	1 15/16	3/4	5/8	3 9/32	1 15/16	19/64	3 3/8	11/16	4 1/64	4 19/32	5 7/8	1 15/16	1 15/32	2 5/16	3 17/32	2.032	.748	UC 210-31	T 210	5.95

Relubrication Feature is Standard.

UC 200 Series

Insert Bearings



Dimensions (in)

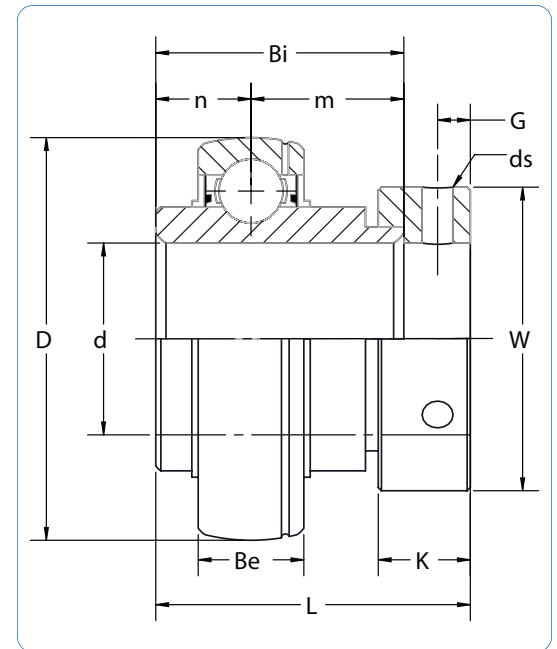
Basic Load Rating (lbs.)

Unit No.	Shaft Dia.	D	Bi	Be	n	m	G	ds	Dynamic	Static	Wt. LBS
UC 202-10	5/8	1.8504	1.2205	0.6693	0.500	0.7205	0.1969	1/4-28	2230	1390	0.30
UC 204-12	3/4	1.8504	1.2205	0.6693	0.500	0.7205	0.1969	1/4-28	2230	1390	0.35
UC 204-20mm	20mm	1.8504	1.2205	0.6693	0.500	0.7205	0.1969	1/4-28	2230	1390	0.35
UC 205-14	7/8	2.0472	1.3425	0.669	0.563	0.7795	0.1969	1/4-28	2420	1560	0.51
UC 205-15	15/16	2.0472	1.3425	0.669	0.563	0.7795	0.1969	1/4-28	2420	1560	0.51
UC 205-16	1	2.0472	1.3425	0.669	0.563	0.7795	0.1969	1/4-28	2420	1560	0.46
UC 205-25mm	25mm	2.0472	1.3425	0.669	0.563	0.7795	0.1969	1/4-28	2420	1560	0.51
UC 206-18	1 1/8	2.4409	1.500	0.748	0.626	0.8740	0.1969	1/4-28	3390	2250	0.77
UC 206-19	1 3/16	2.4409	1.500	0.748	0.626	0.8740	0.1969	1/4-28	3390	2250	0.73
UC 206-20	1 1/4	2.4409	1.500	0.748	0.626	0.8740	0.1969	1/4-28	3390	2250	0.73
UC 206-30mm	30mm	2.4409	1.500	0.748	0.626	0.8740	0.1969	1/4-28	3390	2250	0.73
UC 207-20	1 1/4	2.8346	1.6890	0.787	0.689	1.000	0.2559	5/16-24	4470	3090	1.23
UC 207-21	1 5/16	2.8346	1.6890	0.787	0.689	1.000	0.2559	5/16-24	4470	3090	1.17
UC 207-22	1 3/8	2.8346	1.6890	0.787	0.689	1.000	0.2559	5/16-24	4470	3090	1.12
UC 207-23	1 7/16	2.8346	1.6890	0.787	0.689	1.000	0.2559	5/16-24	4470	3090	1.06
UC 207-35mm	35mm	2.8346	1.6890	0.787	0.689	1.000	0.2559	5/16-24	4470	3090	1.06
UC 208-24	1 1/2	3.1496	1.9370	0.827	0.748	1.1890	0.3150	5/16-24	5660	3990	1.57
UC 208-40mm	40mm	3.1496	1.9370	0.827	0.748	1.1890	0.3150	5/16-24	5660	3990	1.52
UC 209-26	1 5/8	3.3465	1.9370	0.866	0.748	1.1890	0.3150	5/16-24	5660	3990	1.79
UC 209-27	1 11/16	3.3465	1.9370	0.866	0.748	1.1890	0.3150	5/16-24	5660	3990	1.70
UC 209-28	1 3/4	3.3465	1.9370	0.866	0.748	1.1890	0.3150	5/16-24	5660	3990	1.61
UC 209-45mm	45mm	3.3465	1.9370	0.866	0.748	1.1890	0.3150	5/16-24	5660	3990	1.61
UC 210-30	1 7/8	3.5433	2.0315	0.9449	0.748	1.2835	0.3937	3/8-24	6080	4430	1.98
UC 210-31	1 15/16	3.5433	2.0315	0.9449	0.748	1.2835	0.3937	3/8-24	6080	4430	1.81
UC 210-50mm	50mm	3.5433	2.0315	0.9449	0.748	1.2835	0.3937	3/8-24	6080	4430	1.84
UC 211-32	2	3.9370	2.1890	0.9843	0.874	1.3150	0.3937	3/8-24	7490	5620	2.89
UC 211-34	2 1/8	3.9370	2.1890	0.9843	0.874	1.3150	0.3937	3/8-24	7490	5620	2.65
UC 211-35	2 3/16	3.9370	2.1890	0.9843	0.874	1.3150	0.3937	3/8-24	7490	5620	2.54
UC 211-55mm	55mm	3.9370	2.1890	0.9843	0.874	1.3150	0.3937	3/8-24	7490	5620	2.46
UC 212-36	2 1/4	4.3307	2.5630	1.0630	1.000	1.5630	0.3937	3/8-24	9040	6940	3.53
UC 212-38	2 3/8	4.3307	2.5630	1.0630	1.000	1.5630	0.3937	3/8-24	9040	6940	3.42
UC 212-39	2 7/16	4.3307	2.5630	1.0630	1.000	1.5630	0.3937	3/8-24	9040	6940	3.31
UC 212-60mm	60mm	4.3307	2.5630	1.0630	1.000	1.5630	0.3937	3/8-24	9040	6940	3.31
UC 213-40	2 1/2	4.7244	2.5630	1.1024	1.000	1.5630	0.3937	3/8-24	9920	7720	4.41
UC 213-65mm	65mm	4.7244	2.5630	1.1024	1.000	1.5630	0.3937	3/8-24	9920	7720	4.41
UC 215-47	2 15/16	5.1181	3.0630	1.2598	1.311	1.7520	0.4724	7/16-20	11500	9260	5.07
UC 215-75mm	75mm	5.1181	3.0630	1.2598	1.311	1.7520	0.4724	7/16-20	11500	9260	6.49

Relubrication Feature is Standard.

HC 200 Series

Insert Bearings

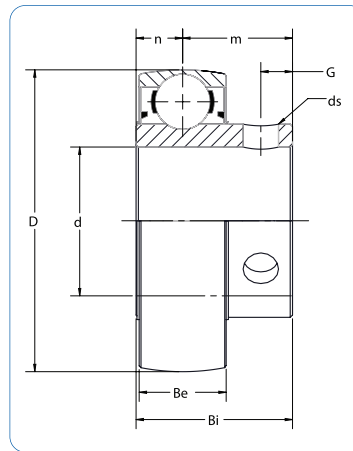


Unit No.	Shaft Dia.	Dimensions (in.)										Basic Load Rating (lbs.)		
		D	L	Bi	Be	n	m	W	K	G	ds	Dynamic	Static	Wt. LBS
HC 204-12	3/4	1.8504	1.7205	1.3465	0.6693	0.6732	0.6732	1.3110	0.5315	0.1969	1/4-28	2230	1390	.49
HC 205-14	7/8													.66
HC 205-15	15/16	2.0472	1.7480	1.3740	0.6693	0.6890	0.6850	1.5000	0.5315	0.1969	1/4-28	2420	1560	.64
HC 205-16	1													.60
HC 206-18	1 1/8													.93
HC 206-19	1 3/16	2.4409	1.9055	1.4370	0.7480	0.7205	0.7165	1.7520	0.6260	0.2362	5/16-24	3390	2250	.93
HC 206-20	1 1/4													.90
HC 207-20	1 1/4													1.57
HC 207-21	1 5/16													1.53
HC 207-22	1 3/8	2.8346	2.0118	1.4803	0.7874	0.7402	0.7402	2.1890	0.6890	0.2559	5/16-24	4470	3090	1.50
HC 207-23	1 7/16													1.37
HC 208-24	1 1/2	3.1496	2.2165	1.6850	0.8270	0.8425	0.8425	2.3740	0.7205	0.2559	5/16-24	5660	3990	1.92
HC 209-26	1 5/8													2.18
HC 209-27	1 11/16	3.3465	2.2165	1.6850	0.8661	0.8425	0.8425	2.5000	0.7205	0.2559	5/16-24	5660	3990	2.05
HC 209-28	1 3/4													1.98
HC 210-30	1 7/8													2.51
HC 210-31	1 15/16	3.5433	2.4685	1.9370	0.9449	0.9685	0.9685	2.7520	0.7205	0.2559	5/16-24	6080	4430	2.31

Relubrication Feature is Standard.

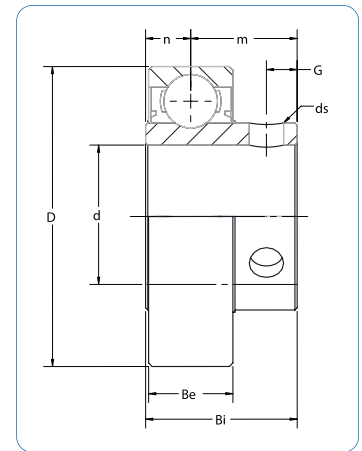
SB/CSB 200 Series

Insert Bearings



◀ SB

CSB ▶



Dimensions (in)

Basic Load Rating (lbs.)

Unit No.	Shaft Dia.	D	Bi	Be	n	m	G	ds	Dynamic.	Static	Wt. LBS
SB 202-10	5/8	0.5748	0.8661	0.4724	0.2362	0.6300	0.1772	10-32	2230	1390	.20
SB 204-12	3/4	1.8504	0.9840	0.5512	0.2756	0.7080	0.1772	1/4-28	2230	1390	.33
SB 205-14	7/8	2.0472	1.0630	0.5906	0.2953	0.7677	0.1969	1/4-28	2420	1560	.40
SB 205-15	15/16										.38
SB 205-16	1										.35
SB 206-18	1 1/8	2.4409	1.1811	0.6299	0.3150	0.8661	0.2170	1/4-28	3390	2250	.60
SB 206-19	1 3/16										.57
SB 206-20	1 1/4										.56
SB 207-20	1 1/4	2.8346	1.2598	0.6693	0.3346	0.9252	0.2362	5/16-24	4470	3090	.99
SB 207-21	1 5/16										.92
SB 207-22	1 3/8										.85
SB 207-23	1 7/16										.79
SB 208-24	1 1/2	3.1496	1.3386	0.7087	0.3543	0.9843	0.3150	5/16-24	5660	3990	1.29

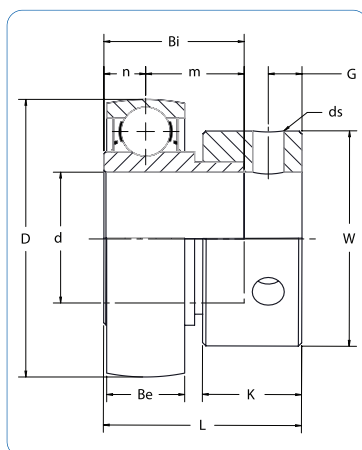
Relubrication Feature is Standard.

CSB 202-10	5/8	1.5748	0.8661	0.4724	0.2362	0.6300	0.1772	10-32	2230	1390	.20
CSB 204-12	3/4	1.8504	0.9840	0.5512	0.2756	0.7080	0.1772	1/4-28	2230	1390	.33
CSB 205-14	7/8	2.0472	1.0630	0.5906	0.2953	0.7677	0.1969	1/4-28	2420	1560	.40
CSB 205-15	15/16										.38
CSB 205-16	1										.35
CSB 206-18	1 1/8	2.4409	1.1811	0.6299	0.3150	0.8661	0.2170	1/4-28	3390	2250	.60
CSB 206-19	1 3/16										.57
CSB 206-20	1 1/4										.56
CSB 207-20	1 1/4	2.8346	1.2598	0.6693	0.3346	0.9252	0.2362	5/16-24	4470	3090	.99
CSB 207-21	1 5/16										.92
CSB 207-22	1 3/8										.85
CSB 207-23	1 7/16										.79
CSB 208-24	1 1/2	3.1496	1.3386	0.7087	0.3543	0.9843	0.3150	5/16-24	5660	3990	1.29

Non-Relubrication Feature is Standard

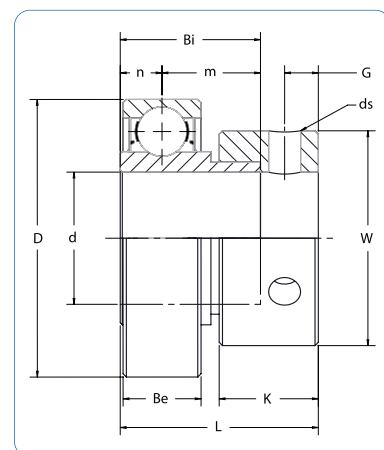
SA/CSA 200 Series

Insert Bearings



◀ SA

CSA ▶



Dimensions (in)

Basic Load Rating (lbs.)

Unit No.	Shaft Dia.	D	L	Bi	Be	n	m	W	K	G	ds	Dynamic	Static	Wt. LBS
SA 204-12	3/4	1.8504	1.2205	0.8465	0.5512	0.2756	0.5709	1.3110	0.5315	0.1969	1/4-28	2230	1390	.33
SA 205-14	7/8													.46
SA 205-15	15/16	2.0472	1.2205	0.8465	0.5906	0.2953	0.5572	1.5000	0.5315	0.1969	1/4-28	2420	1560	.42
SA 205-16	1													.40
SA 206-18	1 1/8													.73
SA 206-19	1 3/16	2.4409	1.4055	0.9370	0.6299	0.3150	0.6220	1.7520	0.6260	0.2362	5/16-24	3390	2250	.68
SA 206-20	1 1/4													.64
SA 207-20	1 1/4													1.23
SA 207-21	1 5/16													1.19
SA 207-22	1 3/8	2.8346	1.5315	1.0000	0.6693	0.3346	0.6654	2.1890	0.6890	0.2559	5/16-24	4470	3090	1.12
SA 207-23	1 7/16													1.06
SA 208-24	1 1/2	3.1496	1.7205	3.1496	0.7087	0.3543	0.8346	2.3740	0.7205	0.2559	5/16-24	5660	3990	1.50

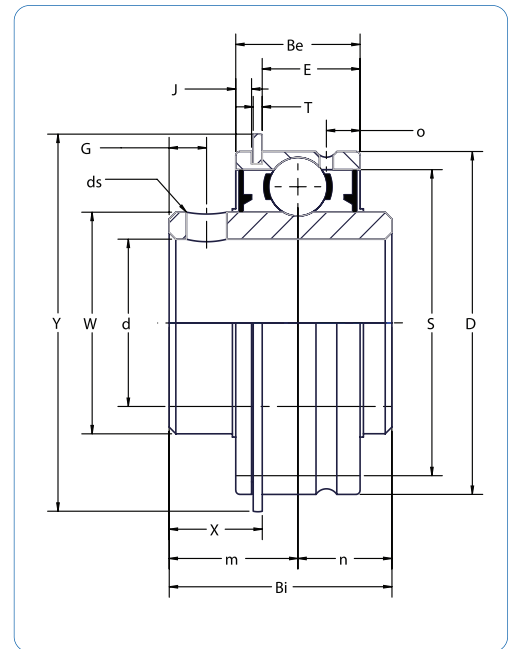
Relubrication Feature is Standard.

CSA 204-12	3/4	1.8504	1.2205	0.8465	0.5512	0.2756	0.5709	1.3110	0.5315	0.1969	1/4-28	2230	1390	.33
CSA 205-14	7/8													.46
CSA 205-15	15/16	2.0472	1.2205	0.8465	0.5906	0.2953	0.5572	1.5000	0.5315	0.1969	1/4-28	2420	1560	.42
CSA 205-16	1													.40
CSA 206-18	1 1/8													.73
CSA 206-19	1 3/16	2.4409	1.4055	0.9370	0.6299	0.3150	0.6220	1.7520	0.6260	0.2362	5/16-24	3390	2250	.68
CSA 206-20	1 1/4													.64
CSA 207-20	1 1/4													1.23
CSA 207-21	1 5/16													1.19
CSA 207-22	1 3/8	2.8346	1.5315	1.0000	0.6693	0.3346	0.6654	2.1890	0.6890	0.2559	5/16-24	4470	3090	1.12
CSA 207-23	1 7/16													1.06
CSA 208-24	1 1/2	3.1496	1.7205	3.1496	0.7087	0.3543	0.8346	2.3740	0.7205	0.2559	5/16-24	5660	3990	1.50

Non-Relubrication Feature is Standard

SER 200 Series

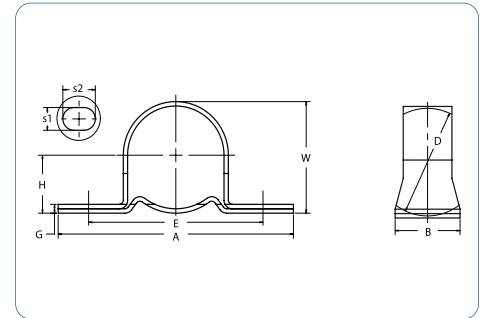
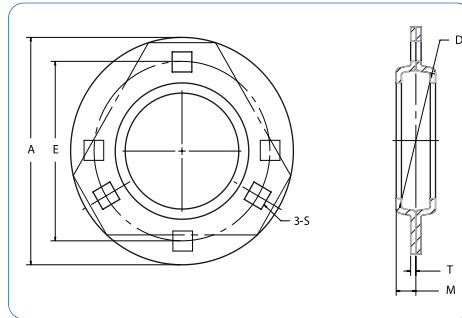
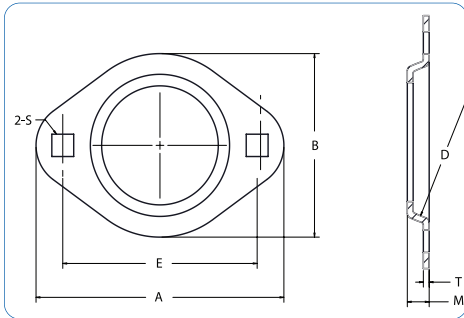
Insert Bearings



Unit No.	Shaft Dia.	Dimensions (in)														Load Rating (lbs.)		Wt. LBS
		D	Bi	Be	n	m	E	W	o	T	J	G	S	Y	X	Dynamic	Static	
SER 204-12	3/4	1.8504	1.2205	0.6260	0.4528	0.7677	.4366	1.1417	1.1575	0.0421	0.1402	0.1969	1.6252	2.0748	0.5957	2230	1410	.56
SER 205-14	7/8																	
SER 205-15	15/16	2.0472	1.3740	0.7520	0.5157	0.8583	0.6093	1.3750	0.2047	0.0421	0.0937	0.1969	1.8593	2.2795	0.6213	2420	1610	.68
SER 205-16	1																	
SER 206-18	1 1/8																	
SER 206-19	1 3/16	2.4409	1.5000	0.8740	0.6260	0.8740	0.6875	1.5937	0.2205	0.0650	0.1250	0.1969	2.1562	2.6654	0.6272	3390	2320	.93
SER 206-20	1 1/4																	
SER 207-20	1 1/4																	
SER 207-21	1 5/16	2.8346	1.6890	0.9376	0.6890	1.0000	0.7500	1.8593	0.2205	0.0650	0.1250	0.2559	2.5625	3.0945	0.7213	4470	3130	1.37
SER 207-22	1 3/8																	
SER 207-23	1 7/16																	
SER 208-24	1 1/2	3.1496	1.9370	1.0945	0.7480	1.1890	0.9062	2.0625	0.2520	0.0650	0.1250	0.3150	2.8281	3.4094	0.8307	5070	3640	2.00
SER 209-26	1 5/8																	
SER 209-27	1 11/16	3.3465	1.9370	1.0945	0.7480	1.1890	0.9062	2.3518	0.2520	0.0650	0.1250	0.3150	3.0625	3.6063	0.8307	5660	4150	2.30
SER 209-28	1 3/4																	
SER 210-30	1 7/8	3.5433	2.0315	1.1260	0.7480	1.2835	0.9062	2.4687	0.2953	0.0949	0.1250	0.3937	3.2187	3.7992	0.9386	6120	4650	2.43
SER 210-31	1 15/16																	
SER 211-32	2																	
SER 211-34	2 1/8	3.9370	2.1890	1.1890	0.8740	1.3150	0.9687	2.7187	0.2953	0.0949	0.1250	0.3937	3.5625	4.1929	0.9386	7500	5840	3.00
SER 211-35	2 3/16																	

Relubrication Feature is Standard.

Pressed Steel Pillow Blocks & Flanges



2-Bolt Flangette

Part Number	Shaft Size	A	B	E	M	2-S	T	D
40M-2	1/2 - 5/8	3 3/16	2 15/16	2 1/2	9/32	9/32	.083	40mm
47M-2	3/4	3 9/16	2 5/8	2 13/16	5/16	11/32	.083	47mm
52M-2	7/8 - 1	3 3/4	2 51/64	3	11/32	11/32	.083	52mm
62M-2	1 1/16 - 1 1/4S	4 7/16	3 5/16	3 9/16	11/32	13/32	.104	62mm
72M-2	1 1/4 - 1 7/16	4 15/16	3 11/16	3 15/16	7/16	13/32	.104	72mm

Optional Features: 1. Zinc Plated 2. Rubber Grommet

3-Bolt Flangette (Triangular)

Part Number	Shaft Size	A	E	M	3-S	T	D
40MM-3T	1/2 - 5/8	3 3/16	2 1/2	9/32	9/32	.075	40mm
47MM-3T	3/4	3 9/16	2 13/16	5/16	11/32	.083	47mm
52MM-3T	7/8 - 1	3 3/4	3	11/32	11/32	.083	52mm
62MM-3T	1 1/16 - 1 1/4S	4 7/16	3 9/16	11/32	13/32	.104	62mm
72MM-3T	1 1/4 - 1 7/16	4 13/16	3 15/16	3/8	13/32	.104	72mm

Optional Features: 1. Zinc Plated 2. Rubber Grommet

4-Bolt Flangette

80MM-4	1 1/2 - 1 9/16	5 13/16	4 11/16	13/32	17/32	.134	80mm
85MM-4	1 5/8 - 1 3/4	5 7/8	4 3/4	7/16	17/32	.134	85mm
90MM-4	1 7/8 - 2	6 1/8	5	7/16	17/32	.149	90mm
100MM-4	2 - 2 3/16	6 9/16	5 7/16	15/32	17/32	.149	100mm

Optional Features: 1. Zinc Plated 2. Relubricatable 3. Rubber Grommet

Pillow Block

Part Number	Shaft Size	A	B	E	G	H	S ₁	S ₂	D
40MPB-ST	1/2 - 5/8	3 5/8	1	2 11/16	.133	7/8	11/32	1/2	40mm
47MPB-ST	3/4	4 1/8	1	3	.178	1	13/32	1/2	47mm
52MPB-ST	7/8 - 1	4 1/2	1 1/8	3 3/8	.208	1 1/8	13/32	9/16	52mm
62MPB-ST	1 1/16 - 1 1/4S	4 7/8	1 1/8	3 3/4	.238	1 5/16	13/32	9/16	62mm
72MPB-ST	1 1/4 - 1 7/16	5 3/4	1 1/4	4 1/4	.238	1 9/16	17/32	3/4	72mm

Optional Features: 1. Zinc Plated 2. Snap-together Fit 3. Rubber Grommet

UC	=	Set Screw Locking – Wide inner Ring
SB	=	Set Screw Locking – Narrow inner Ring
CSB	=	Set Screw Locking Collar – Narrow inner Ring – Cylindrical Outer Ring
HC (NA)	=	Eccentric Locking Collar – Wide Inner Ring
SA	=	Eccentric Locking Collar – Narrow inner Ring
CSA	=	Eccentric Locking Collar – Narrow inner Ring – Cylindrical Outer Ring
SER	=	Set Screw Locking – Wide inner Ring + Snap Ring
P	=	Pillow Block Housing – Standard Shaft Height
AK	=	Pillow Block Housing – Low Shaft Height
PA	=	Pillow Block Housing – Tapped Base
F, FS	=	Four Block Flang Housing
FB	=	Tree Bolt Flange Bracket Housing
FL, FT	=	Standard Two Bolt Flange Housing
LF	=	Light Duty Two Bolt Flange Housing
FX	=	Ductile Tow Bolt Flange Housing
T	=	Take Up Housing (Wide Slot)

Interchange

Power Rite	Browning	Dodge	Fafnir	IPTCI	NTN	Peer	Seal Master
UCP	MPS2	P2B-SC	RASC	UCP	UCP	UCP	NP
SBP	–	–	SAS	SBP	–	FHSP	VP
SAP	VPE1	P2B-SXV	VAS	SAP	–	FHP	VP-E
HCP	VPE2	P2B-SXR	RASC	NAP	UELPL	HCP	–
UCAK	MPLS2	SCB	–	UCPL	UCPL	UCPL	NPL
SBAK	VPLS1	–	SAK	SBPL	ASPL	FHSLP	VPL
SAAK	VPLE1	–	VAK	SAPL	AELPL	FHLP	VPL-E
HCAK	VPLE2	SXRB	RAK	HCAK	UELPL	HCLP	–
UCPA	VTBS	–	–	UCPA	UCUP	UCPA	TB
UCF	VF4S2	F4B-SC	RCJC	UCF	UCF	UCF	SF
SBF	VF4S2	–	–	SBF	–	FHSF	VF
SAF	VF4E2	F4B-SVX	VCJ	SAF	–	FHF	VF-E
HCFS	VF4E2	–	RCJ	NANF	–	HCFS	VF-E
UCFB	–	–	–	UCFB	UCFH	UCFB	FB
UCFL	VF2S2	F2B-SC	RCJTC	UCFL	UCFL	UCFT	SFT
SBFL	VF2S2	–	SCJT	SBFL	–	FHSFT	VFT
SAFL	VF2E2	F2B-SXV	VCJT	SAFL	–	FHFT	VFT-E
HCFT	VF2E2	–	RCJT	NANFL	UELFLU	HCFTS	VFT-E
SBLF	–	–	–	SBLF	–	FHSLF	–
SALF	VF2E2	–	–	SALF	–	FHLF	VFT-E
SBFX	VF2S1	–	SFTD	SBLF-GH	–	FHSFX	LFT
SAFX	VF2E1	–	VFTD	SALF-GH	–	FHFX	LFT-E
UCT	MTWS	WSTV-SC	–	UCT	UCT	UCT	ST
SER	–	–	GC-KRRG-2	ER	UCS-DINR	SER	ER
UC	VS2	SC	GC-KRRB	UC	UC	UC	2-
SB	VS1	–	GYA-RRB	SB	AS	FHS	L-
CSB	–	–	GYA-RR	CSB	–	FHSR	SL-
SA	VE1	SXV	GRA-RRB	SA	AEL	FH	L-E
CSA	–	–	GRA-RR	CSA	AEL-N	FHR	SL-E
HC	VE2	SXR	G-KRRB	NA	UEL	HC	R-
SBF3X	–	–	–	SBRFB	–	FHSF3X	LF-16
SAF3X	–	–	VFD1	ASRFB	–	FHF3X	LF-16E
UCFC	–	FC-SC	–	UCFC	UCFC	UCFC	SFC-16

Technical Data

ALL Power Rite Insert Bearings are made of high quality 52100 vacuum de-gassed steel. Stainless steel inserts, nickel plated insert and inserts with black oxide finish are also available.

Two types of sealing are standard depending on the type of bearing selected. One type is a steel slinger with a synthetic rubber seal. The other is a synthetic rubber seal molded to a thick steel plate. Triple lip seal are also available. Triple lip seals are high torque seals made of synthetic rubber molded to a heavy metal surface. Triple lip seals are typically used where there are severe environmental conditions. Please contact one of our salespeople to discuss which sealing options are provided for the type of bearing you are looking for.

Power Rite housings are made of high quality cast or ductile iron depending on the specific model. Stainless steel, nickel plated, thermoplastic and pressed steel housings are also available.

Tightening Torque of Set Screws in Eccentric Locking Collars.

Bearing Number	Set screw size	Hex width	Tightening torque In-Lbs.
HC, SA, CSA			
201-205	1/4-28x1/4	1/8	77.9
201-205(mm)	M6xP1.0		77.9
206-210	5/16-24x5/16	5/32	156
206-210(mm)	M8xP1.0		156
211-212	3/8-24x3/8	3/16	273
211-212(mm)	M10xP1.25		273

Tightening Torque of Set Screws in Set Screw Locking Collars

Bearing Number	Set screw size	Hex width	Tightening torque In-Lbs.
UC, SER	SB,CSB		
201-206	201-206	1/4-28x1/4	77.9
201-206(mm)	201-206(mm)	M6xP1.0	77.9
207-209	207-209	5/16-24x5/16	156
207-209(mm)	207-209(mm)	M8xP1.0	156
210-213	210-213	3/8-24x3/8	273
210-213(mm)	210-213(mm)	M10xP1.25	273
214-218		7/16-20x7/16	428
214-218(mm)		M12xP1.5	428

Zerk Size and Grease Type

Bearing Number	Fitting Used	Type
202-218	1/4-28 UNF	Standard - Straight

Grease	Recommended Operating Temperature Range (F)	Thickener	Base Oil	Water Resistant
Standard Grease	-5 to +250	Lithium	Mineral	Yes

All information, data and dimension tables in this catalog have been carefully compiled and thoroughly checked. However, Power Rite assumes no liability to any company or person for damages, direct or indirect, to property or person, based on information contained in this publication. Power Rite reserves the right to change specifications and other information included in this catalog without notice.

Power Rite Products warrants that its bearing shall be free from defects in materials and workmanship for 90 days from the date of sale. This warranty is to the original purchaser only. This warranty will not apply to any bearing which has been improperly installed, misused, repaired or altered in any way, improperly maintained, subject to negligence or misapplication. Power Rite's sole obligation for any failure in its bearing is limited, at Power Rite's option, to replacement at no charge, or an extension of credit for the cost of the bearing, provided that the bearing is returned to Power Rite freight prepaid, and determined by Power Rite to be defective in material or workmanship.

This warranty is in lieu of all other warranties, expressed or implied, including any implied warranty of merchantability or fitness for a particular purpose and is also in lieu of all other obligations or liabilities on the part of Power Rite, including any obligations of liability arising from contract, tort, or otherwise for damages, whether direct or indirect or consequential. There are no other warranties, expressed or implied made by Power Rite except the warranty against defect in the material and workmanship set forth above and Power Rite neither assumes nor authorizes any other person or firm to assume for it any other obligation or liability in connection with its product

BEARINGS
CHAINS
SPROCKETS
SHEAVES
HUBS
BUSHINGS
SHAFT COLLARS
CASTINGS
STAMPINGS
MOTOR COMPONENTS
CUSTOM ENGINEERED COMPONENTS

Power Rite Products

Corporate Headquarters

625 Jersey Avenue, New Brunswick, NJ 08901

Toll Free 800-442-4405 • Tel 732-846-3399 • Fax 732-846-8866

sales@powerriteproducts.com • www.powerriteproducts.com