

+ GUIDE TO PPL HOUSED UNITS



As one of the world's leading manufacturers of rolling bearings, linear technology components and steering systems, we can be found on almost every continent – with production facilities, sales offices and technology centres – because our customers appreciate short decision-making channels, prompt deliveries and local service.



The NSK company

NSK commenced operations as the first Japanese manufacturer of rolling bearings back in 1916. Ever since, we have been continuously expanding and improving not only our product portfolio but also our range of services for various industrial sectors. In this context, we develop technologies in the fields of rolling bearings, linear systems, components for the automotive industry and mechatronic systems. Our research and production facilities in Europe, Americas and Asia are linked together in a global technology

network. Here we concentrate not only on the development of new technologies, but also on the continuous optimisation of quality – at every process stage.

Among other things, our research activities include product design, simulation applications using a variety of analytical systems and the development of different steels and lubricants for rolling bearings.

Partnership based on trust – and trust based on quality

Total Quality by NSK: The synergies of our global network of NSK Technology Centres. Just one example of how we meet our requirements for high quality.

NSK is one of the leading companies with a long tradition in patent applications for machine parts. In our worldwide research centres, we not only concentrate on the development of new technologies, but also on the continual

improvement of quality based on the integrated technology platform of tribology, material technology, analysis and mechatronics.

More about NSK at www.nskeurope.com or call us on +44 (0)1636 605123



Housed Bearing Solutions from PPL

A lot of time and technology goes into keeping things simple, and housed units are no exception. The PPL range has benefited from continuous development and innovation, developing unique solutions to help our customers deliver quality, longevity and ease of use. PPL housed bearings are flexible; they are capable of accommodating moderate misalignment and can be adapted to a huge number of applications using a range of inserts, housings and sealing solutions.

The reliability, simplicity and ease of assembly of items in the PPL range extends to all the variants included in this catalogue:

- › Wide range of problem solving solutions
- › Severe environment performance
- › Simple to fit
- › Easy to use

Mounting Housed Units

Ensure the Assembly area is clean and dry. The housed Unit should be kept in its packaging until it is ready for assembly.

- › Measure the journal where the bearing will fit. Check that the journal is in tolerance (h7 for normal applications h6 where high loads and speeds are present).
- › Relieve the set screws clear of the bore and slide the housed unit on to the shaft. Direct impact on the bearing insert or housing should be avoided.
- › Bolt the unit to the mounting plate in the case of pillow blocks or to the side wall in the case of flange units.
- › Repeat for the housed unit on the opposite side.
- › Position the shaft axially.
- › Ensure the bearing inserts are correctly aligned and if possible rotate the shaft by hand a number of times.
- › Alternately and evenly tighten the two inner ring set screws against the shaft.

Recommended tightening torque for set screws

- › M5 size 201 to 203 3.5 Newton metres
- › M6 size 204 to 206 5.5 Newton metres
- › M8 size 207 to 209 11.5 Newton metres
- › M10 size 210 to 213 22 Newton metres
- › M12 size 214 to 218 33 Newton metres

Sealing

All PPL units are supplied with single internal contact seals and flinger seals as standard. For additional protection in severely contaminated environments, these units can also be supplied with special triple lip seals. Suffix 'L3' Example: UCP210L3

PPL Housed Bearing Units

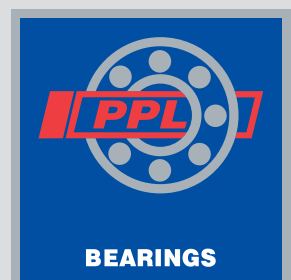
Below is a pillow block unit, but PPL offer a wide range of housed bearing units with various sealing options to suit the bearing application.



At a glance: advantages for you – and your customers

NSK is a member of the World Bearing Association (WBA), which has launched an initiative to combat fake bearings and provides information about the potential safety risks posed by counterfeit bearings.

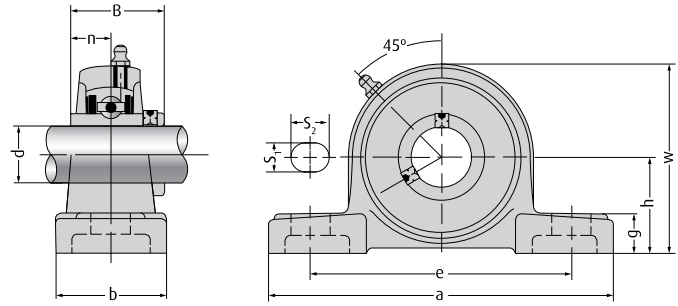
For more information please visit:
www.stopfakebearings.com



PPL Pillow Blocks

UCP2 (Normal-duty)

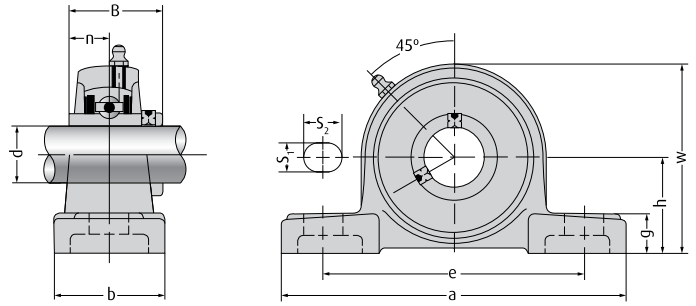
Unit No.	Dimensions (mm/inch)											Bolt Size (mm/inch)	Bearing No.	Housing No.	Weight (kg)
	d	h	a	e	b	s ₁	s ₂	g	w	B	n				
UCP201	12	30.2	127	95	38	13	19	14	62	31	12.7	M10	UC201	P203	0.69
UCP201-8	1/2	1-3/16	5	3-3/4	1-1/2	1/2	3/4	9/16	2-7/16	1.2205	0.5	3/8	UC201-8		0.69
UCP202	15	30.2	127	95	38	13	19	14	62	31	12.7	M10	UC202	P203	0.69
UCP202-9	9/16	1-3/16	5	3-3/4	1-1/2	1/2	3/4	9/16	2-7/16	1.2205	0.5	3/8	UC202-9		0.69
UCP202-10	5/8												UC202-10		0.69
UCP203	17	30.2	127	95	38	13	19	14	62	31	12.7	M10	UC203	P203	0.68
UCP203-11	11/16	1-3/16	5	3-3/4	1-1/2	1/2	3/4	9/16	2-7/16	1.2205	0.5	3/8	UC203-11		0.67
UCP204	20	33.3	127	95	38	13	19	14	65	31	12.7	M10	UC204	P204	0.66
UCP204-12	3/4	1-5/16	5	3-3/4	1-1/2	1/2	3/4	9/16	2-9/16	1.2205	0.5	3/8	UC204-12		0.66
UCP205	25	36.5	140	105	38	13	19	15	71	34.1	14.3	M10	UC205	P205	0.81
UCP205-13	13/16												UC205-13		0.85
UCP205-14	7/8	1-7/16	5-1/2	4-1/8	1/1/2	1/2	3/4	19/32	2-25/32	1.3425	0.563	3/8	UC205-14		0.83
UCP205-15	15/16												UC205-15		0.82
UCP205-16	1												UC205-16		0.81
UCP206	30	42.9	165	121	48	17	20	17	84	38.1	15.9	M14	UC206	P206	1.24
UCP206-17	1-1/16												UC206-17		1.27
UCP206-18	1-1/8	1-11/16	6-1/2	4-3/4	1-7/8	43/64	25/32	21/32	3-5/16	1.5	0.626	1/2	UC206-18		1.26
UCP206-19	1-3/16												UC206-19		1.24
UCP206-20	1-1/4												UC206-20		1.23
UCP207	35	47.6	167	127	48	17	20	18	93	42.9	17.5	M14	UC207	P207	1.58
UCP207-20	1-1/4												UC207-20		1.64
UCP207-21	1-5/16	1-7/8	6-9/16	5	1-7/8	43/64	25/32	45/64	3-21/32	1.689	0.689	1/2	UC207-21		1.61
UCP207-22	1-3/8												UC207-22		1.58
UCP207-23	1-7/16												UC207-23		1.55
UCP208	40	49.2	184	137	54	17	20	18	100	49.2	19	M14	UC208	P208	1.89
UCP208-24	1-1/2	1-15/16	7-1/4	5-13/32	2-1/8	43/64	25/32	45/64	3-15/16	1.937	0.748	1/2	UC208-24		1.93
UCP208-25	1-9/16												UC208-25		1.9
UCP209	45	54	190	146	54	17	20	20	106	49.2	19	M14	UC209	P209	2.14
UCP209-26	1-5/8												UC209-26		2.24
UCP209-27	1-11/16	2-1/8	7-15/32	5-3/4	2-1/8	43/64	25/32	25/32	4-11/64	1.937	0.748	1/2	UC209-27		2.2
UCP209-28	1-3/4												UC209-28		2.14
UCP210	50	57.2	206	159	60	20	23	21	113	51.6	19	M16	UC210	P210	2.66
UCP210-29	1-13/16												UC210-29		2.78
UCP210-30	1-7/8	2-1/4	8-1/8	6-1/4	2-3/8	25/32	29/32	53/64	4-29/64	2.0315	0.748	5/8	UC210-30		2.73
UCP210-31	1-15/16												UC210-31		2.68
UCP210-32	2												UC210-32		2.64
UCP211	55	63.5	219	171	60	20	23	23	125	55.6	22.2	M16	UC211	P211	3.31
UCP211-32	2												UC211-32		3.46
UCP211-33	2-1/16	2-1/2	8-5/8	6-47/64	2-3/8	25/32	29/32	29/32	4-59/64	2.189	0.874	5/8	UC211-33		3.4
UCP211-34	2-1/8												UC211-34		3.35
UCP211-35	2-3/16												UC211-35		3.29
UCP212	60	69.8	241	184	70	20	23	25	138	65.1	25.4	M16	UC212	P212	4.9
UCP212-36	2-1/4												UC212-36		5.03
UCP212-37	2-5/16	2-3/4	9-1/2	7-1/4	2-3/4	25/32	29/32	63/64	5-7/16	2.563	1	5/8	UC212-37		4.95
UCP212-38	2-3/8												UC212-38		4.88
UCP212-39	2-7/16												UC212-39		4.81
UCP213	65	76.2	265	203	70	25	28	27	150	65.1	25.4	M20	UC213	P213	5.15
UCP213-40	2-1/2	3	10-7/16	8	2-3/4	63/64	1-3/32	1-1/16	5-29/32	2.563	1	3/4	UC213-40		5.24
UCP213-41	2-9/16												UC213-41		5.15



Unit No.	Dimensions (mm/inch)											Bolt Size (mm/inch)	Bearing No.	Housing No.	Weight (kg)
	d	h	a	e	b	s ₁	s ₂	g	w	B	n				
UCP214	70	79.4	266	210	72	25	28	27	156	74.6	30.2	M20	UC214		6.2
UCP214-42	2-5/8												UC214-42	P214	6.41
UCP214-43	2-11/16	3-1/8	10-15/32	8-17/64	2-27/32	63/64	1-3/32	1-1/16	6-9/64	2.937	1.189	3/4	UC214-43		6.31
UCP214-44	2-3/4												UC214-44		6.21
UCP215	75	82.6	275	217	74	25	28	28	162	77.8	33.3	M20	UC215		7.16
UCP215-45	2-13/16												UC215-45	P215	7.41
UCP215-46	2-7/8	3-1/4	10-53/64	8-35/64	2-29/32	63/64	1-3/32	1-3/32	6-3/8	3.063	1.311	3/4	UC215-46		7.3
UCP215-47	2-15/16												UC215-47		7.19
UCP215-48	3												UC215-48		7.07
UCP216	80	88.9	292	232	78	25	28	30	174	82.6	33.3	M20	UC216		8.1
UCP216-49	3-1/16												UC216-49	P216	8.28
UCP216-50	3-1/8	3-1/2	11-1/2	9-1/8	3-1/16	63/64	1-3/32	1-3/16	6-27/32	3.252	1.311	3/4	UC216-50		8.15
UCP216-51	3-3/16												UC216-51		8.02
UCP217	85	95.2	310	247	83	25	28	32	185	85.7	34.1	M20	UC217		9.81
UCP217-52	3-1/4												UC217-52	P217	10.03
UCP217-53	3-5/16	3-3/4	12-13/64	9-23/32	3-17/64	63/64	1-3/32	1-1/4	7-9/32	3.374	1.343	3/4	UC217-53		9.89
UCP217-55	3-7/16												UC217-55		9.60
UCP218	90	101.6	327	262	88	27	30	33	198	96	39.7	M22	UC218		11.96
UCP218-56	3-1/2	4	12-7/8	10-5/16	3-15/32	1-1/16	1-3/16	1-19/64	7-51/64	3.795	1.563	7/8	UC218-56	P218	12.07

PPL Pillow Blocks

UCPX (Medium-duty)

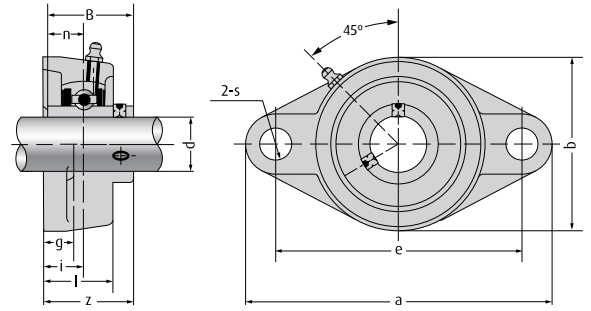


Unit No.	Dimensions (mm/inch)											Bolt Size (mm/inch)	Bearing No.	Housing No.	Weight (kg)
	d	h	a	e	b	s ₁	s ₂	g	w	B	n				
UCPX05	25	44.4	159	119	51	17	20	18	85	38.1	15.9	M14	UCX05	PX05	1.5
UCPX05-13	13/16												UCX05-13		
UCPX05-14	7/8	1-3/4	6-1/4	4-11/16	2	43/64	25/32	23/32	3-11/32	1.5	0.63	1/2	UCX05-14		
UCPX05-15	15/16												UCX05-15		
UCPX05-16	1												UCX05-16		
UCPX06	30	47.6	175	127	57	17	20	20	93	42.9	17.5	M14	UCX06	PX06	2
UCPX06-17	1-1/16												UCX06-17		
UCPX06-18	1-1/8	1-7/8	6-7/8	5	2-1/4	43/64	25/32	25/32	3-21/32	1.69	0.69	1/2	UCX06-18		
UCPX06-19	1-3/16												UCX06-19		
UCPX06-20	1-1/4												UCX06-20		
UCPX07	35	54	203	144	57	17	20	21	105	49.2	19	M14	UCX07	PX07	2.6
UCPX07-21	1-5/16												UCX07-21		
UCPX07-22	1-3/8	2-1/8	8	5-21/32	2-1/4	43/64	25/32	13/16	4-1/8	1.94	0.75	1/2	UCX07-22		
UCPX07-23	1-7/16												UCX07-23		
UCPX08	40	58.7	222	156	67	20	23	26	111	49.2	19	M16	UCX08		
UCPX08-24	1-1/2	2-5/16	8-3/4	6-5/32	2-5/8	25/32	29/32	1-1/32	4-3/8	1.94	0.75	5/8	UCX08-24		
UCPX08-25	1-9/16												UCX08-25		
UCPX09	45	58.7	222	156	67	20	23	26	116	51.6	19	M16	UCX09	PX09	3.3
UCPX09-26	1-5/8												UCX09-26		
UCPX09-27	1-11/16	2-5/16	8-3/4	6-5/32	2-5/8	25/32	29/32	1-1/32	4-9/16	2.03	0.75	5/8	UCX09-27		
UCPX09-28	1-3/4												UCX09-28		
UCPX09-29	1-13/16												UCX09-29		
UCPX10	50	63.5	241	171	73	20	23	27	126	55.6	22.2	M16	UCX10		
UCPX10-30	1-7/8												UCX10-30		
UCPX10-31	1-15/16	2-1/2	9-1/2	6-47/64	2-7/8	25/32	29/32	1-1/16	4-31/32	2.19	0.87	5/8	UCX10-31		
UCPX10-32	2												UCX10-32		
UCPX11	55	69.8	260	184	79	25	28	30	137	65.1	25.4	M20	UCX11	PX11	5.7
UCPX11-33	2-1/16												UCX11-33		
UCPX11-34	2-1/8												UCX11-34		
UCPX11-35	2-3/16	2-3/4	10-1/4	7-1/4	3-1/8	31/32	1-3/32	1-3/16	5-13/32	2.56	1	3/4	UCX11-35		
UCPX11-36	2-1/4												UCX11-36		
UCPX11-37	2-5/16												UCX11-37		
UCPX12	60	76.2	286	203	83	25	28	33	151	65.1	25.4	M20	UCX12		
UCPX12-38	2-3/8	3	11-1/4	8	3-9/32	31/32	1-3/32	1-5/16	5-15/16	2.56	1	3/4	UCX12-38		
UCPX12-39	2-7/16												UCX12-39		
UCPX13	65	76.2	286	203	83	25	28	33	154	74.6	30.2	M20	UCX13	PX13	7.6
UCPX13-40	2-1/2	3	11-1/4	8	3-9/32	63/64	1-3/32	1-5/16	6-1/16	2.94	1.19	3/4	UCX13-40		
UCPX13-41	2-9/16												UCX13-41		
UCPX14	70	88.9	330	229	89	27	30	35	170	77.8	33.3	M22	UCX14	PX14	9.9
UCPX14-42	2-5/8												UCX14-42		
UCPX14-43	2-11/16	3-1/2	13	9-1/32	3-1/2	1-1/16	1-3/16	1-3/8	6-11/16	3.06	1.31	7/8	UCX14-43		
UCPX14-44	2-3/4												UCX14-44		
UCPX15	75	88.9	330	229	89	27	30	35	175	82.6	33.3	M22	UCX15	PX15	11
UCPX15-45	2-13/16												UCX15-45		
UCPX15-46	2-7/8	3-1/2	13	9-1/32	3-1/2	1-1/16	1-3/16	1-3/8	6-7/8	3.25	1.31	7/8	UCX15-46		
UCPX15-47	2-15/16												UCX15-47		
UCPX15-48	3												UCX15-48		

Unit No.	Dimensions (mm/inch)											Bolt Size (mm/inch)	Bearing No.	Housing No.	Weight (kg)
	d	h	a	e	b	s ₁	s ₂	g	w	B	n				
UCPX16	80	101.6	381	283	102	27	30	40	194	85.7	34.1	M22	UCX16	PX16	15
UCPX16-49	3-1/16												UCX16-49		
UCPX16-50	3-1/8	4	15	11-5/32	4-1/32	1-1/16	1-3/16	1-9/16	7-5/8	3.37	1.34	7/8	UCX16-50		
UCPX16-51	3-3/16												UCX16-51		
UCPX16-52	3-1/4												UCX16-52		
UCPX17	85	101.6	381	283	102	27	30	40	200	96	39.7	M22	UCX17	PX17	16
UCPX17-53	3-5/16	4	15	11-5/32	4-1/32	1-1/16	1-3/16	1-9/16	7-7/8	3.78	1.56	7/8	UCX17-53		
UCPX17-55	3-7/16												UCX17-55		
UCPX18	90	101.6	381	283	111	27	30	40	206	104	42.9	M22	UCX18	PX18	17
UCPX18-56	3-1/2	4	15	11-5/32	4-3/8	1-1/16	1-3/16	1-37/64	8-7/64	4.09	1.69	7/8	UCX18-56		
UCPX20	100	127	432	337	121	33	36	45	244	117.5	49.2	M24	UCX20	PX20	30
UCPX20-64	4	5	17	13-9/32	4-3/4	1-5/16	1-27/64	1-25/32	9-39/64	4.63	1.9370	1	UCX20-64		

PPL Two Bolt Flange Units

UCFL2 (Normal-duty)



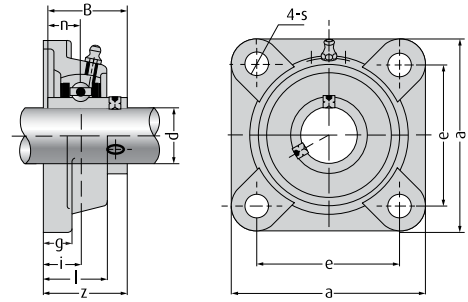
Unit No.	Dimensions (mm/inch)											Bolt Size (mm/inch)	Bearing No.	Housing No.	Weight (kg)
	d	a	e	i	g	l	s	b	z	B	n				
UCFL201	12	113	90	15	11	25.5	12	60	33.3	31	12.7	M10	UC201	FL204	0.45
UCFL201-8	1/2	4-7/16	3-35/64	19/32	7/16	1	15/32	2-3/8	1-5/16	1.2205	0.5	3/8	UC201-8		0.44
UCFL202	15	113	90	15	11	25.5	12	60	33.3	31	12.7	M10	UC202	FL204	0.44
UCFL202-9	9/16	4-7/16	3-35/64	19/32	7/16	1	15/32	2-3/8	1-5/16	1.2205	0.5	3/8	UC202-9		0.44
UCFL202-10	5/8												UC202-10		0.44
UCFL203	17	113	90	15	11	25.5	12	60	33.3	31	12.7	M10	UC203	FL204	0.43
UCFL203-11	11/16	4-7/16	3-35/64	19/32	7/16	1	15/32	2-3/8	1-5/16	1.2205	0.5	3/8	UC203-11		0.42
UCFL204	20	113	90	15	11	25.5	12	60	33.3	31	12.7	M10	UC204	FL204	0.41
UCFL204-12	3/4	4-7/16	3-35/64	19/32	7/16	1	15/32	2-3/8	1-5/16	1.2205	0.5	3/8	UC204-12		0.41
UCFL205	25	130	99	16	13	27	16	68	35.8	34.1	14.3	M14	UC205		0.58
UCFL205-13	13/16												UC205-13		0.62
UCFL205-14	7/8	5-1/8	3-57/64	5/8	1/2	1-1/16	5/8	2-11/16	1-13/32	1.3425	0.563	1/2	UC205-14	FL205	0.61
UCFL205-15	15/16												UC205-15		0.59
UCFL205-16	1												UC205-16		0.58
UCFL206	30	148	117	18	13	31	16	80	40.2	38.1	15.9	M14	UC206		0.86
UCFL206-17	1-1/16												UC206-17		0.89
UCFL206-18	1-1/8	5-13/16	4-39/64	45/64	1/2	1-7/32	5/8	3-5/32	1-19/32	1.5	0.626	1/2	UC206-18	FL206	0.88
UCFL206-19	1-3/16												UC206-19		0.86
UCFL206-20	1-1/4												UC206-20		0.85
UCFL207	35	161	130	19	14	34	16	90	44.4	42.9	17.5	M14	UC207		1.08
UCFL207-20	1-1/4												UC207-20		1.14
UCFL207-21	1-5/16	6-11/32	5-1/8	3/4	35/64	1-11/32	5/8	3-35/64	1-3/4	1.689	0.689	1/2	UC207-21	FL207	1.11
UCFL207-22	1-3/8												UC207-22		1.08
UCFL207-23	1-7/16												UC207-23		1.05
UCFL208	40	175	144	21	14	36	16	100	51.2	49.2	19	M14	UC208		1.44
UCFL208-24	1-1/2	6-7/8	5-43/64	53/64	35/64	1-13/32	5/8	3-15/16	2-1/64	1.937	0.748	1/2	UC208-24	FL208	1.48
UCFL208-25	1-9/16												UC208-25		1.45
UCFL209	45	188	148	22	15	38	19	108	52.2	49.2	19	M16	UC209		1.74
UCFL209-26	1-5/8												UC209-26	FL209	1.84
UCFL209-27	1-11/16	7-13/32	5-53/64	55/64	19/32	1-1/2	3/4	4-1/4	2-1/16	1.937	0.748	5/8	UC209-27		1.8
UCFL209-28	1-3/4												UC209-28		1.76
UCFL210	50	197	157	22	15	40	19	115	54.6	51.6	19	M16	UC210		2.1
UCFL210-29	1-13/16												UC210-29		2.22
UCFL210-30	1-7/8	7-3/4	6-3/16	55/64	19/32	1-37/64	3/4	4-17/32	2-5/32	2.0315	0.748	5/8	UC210-30	FL210	2.17
UCFL210-31	1-15/16												UC210-31		2.12
UCFL210-32	2												UC210-32		2.08
UCFL211	55	224	184	25	18	43	19	130	58.4	55.6	22.2	M16	UC211		2.91
UCFL211-32	2												UC211-32		3.06
UCFL211-33	2-1/16	8-13/16	7-1/4	63/64	23/32	1-11/16	3/4	5-1/8	2-5/16	2.189	0.874	5/8	UC211-33	FL211	3
UCFL211-34	2-1/8												UC211-34		2.95
UCFL211-35	2-3/16												UC211-35		2.89
UCFL212	60	250	202	29	18	48	23	140	68.7	65.1	25.4	M20	UC212		3.74
UCFL212-36	2-1/4												UC212-36		3.87
UCFL212-37	2-5/16	9-27/32	7-61/64	1-9/64	23/32	1-7/8	29/32	5-1/2	2-23/32	2.563	1	3/4	UC212-37	FL212	3.79
UCFL212-38	2-3/8												UC212-38		3.72
UCFL212-39	2-7/16												UC212-39		3.65
UCFL213	65	258	210	30	22	50	23	155	69.7	65.1	25.4	M20	UC213		4.57
UCFL213-40	2-1/2	10-5/32	8-17/64	1-3/16	7/8	1-31/32	29/32	6-3/32	2-3/4	2.563	1	3/4	UC213-40	FL213	4.66
UCFL213-41	2-9/16												UC213-41		4.57

Unit No.	Dimensions (mm/inch)											Bolt Size (mm/inch)	Bearing No.	Housing No.	Weight (kg)
	d	a	e	i	g	l	s	b	z	B	n				
UCFL214	70	265	216	31	22	54	23	160	75.4	74.6	30.2	M20	UC214		5.11
UCFL214-42	2-5/8	10-7/16	8-1/2	1-7/32	7/8	2-1/8	29/32	6-5/16	2-31/32	2.937	1.189	3/4	UC214-42	FL214	5.32
UCFL214-43	2-11/16												UC214-43		5.22
UCFL214-44	2-3/4												UC214-44		5.12
UCFL215	75												275		225
UCFL215-45	2-13/16	10-13/16	8-55/64	1-11/32	7/8	2-7/32	29/32	6-1/2	3-3/32	3.063	1.311	3/4	UC215-45	FL215	5.62
UCFL215-46	2-7/8												UC215-46		5.51
UCFL215-47	2-15/16												UC215-47		5.4
UCFL215-48	3												UC215-48		5.28
UCFL216	80	290	233	34	22	58	25	180	83.3	82.6	33.3	M22	UC216		7.2
UCFL216-49	3-1/16	11-13/32	9-11/64	1-11/32	7/8	2-9/32	63/64	7-3/32	3-9/32	3.252	1.311	7/8	UC216-49	FL216	7.38
UCFL216-50	3-1/8												UC216-50		7.25
UCFL216-51	3-1/16												UC216-51		7.12
UCFL217	85												305		248
UCFL217-52	3-1/4	12	9-49/64	1-27/64	15/16	2-15/32	63/64	7-15/32	3-7/16	3.374	1.343	7/8	UC217-52	FL217	8.83
UCFL217-53	3-5/16												UC217-53		8.69
UCFL217-55	3-7/16												UC217-55		8.4
UCFL218	90												320		265
UCFL218-56	3-1/2	12-19/32	10-7/16	1-37/64	15/16	2-11/16	63/64	8-1/16	3-25/32	3.7795	1.563	7/8	UC218-56	FL218	10.62

PPL Four Bolt Flange Units

UCF2 (Normal-duty)

Unit No.	Dimensions (mm/inch)										Bolt Size (mm/inch)	Bearing No.	Housing No.	Weight (kg)
	d	a	e	i	g	l	s	z	B	n				
UCF201	12	86	64	15	12	25.5	12	33.3	31	12.7	M10	UC201	F204	0.6
UCF201-8	1/2	3-3/8	2-33/64	19/32	15/32	1	15/32	1-5/16	1.2205	0.5	3/8	UC201-8		0.59
UCF202	15	86	64	15	12	25.5	12	33.3	31	12.7	M10	UC202	F204	0.59
UCF202-9	9/16	3-3/8	2-33/64	19/32	15/32	1	15/32	1-5/16	1.2205	0.5	3/8	UC202-9		0.59
UCF202-10	5/8											UC202-10		0.59
UCF203	17	86	64	15	12	25.5	12	33.3	31	12.7	M10	UC203	F204	0.58
UCF203-11	11/16	3-3/8	2-33/64	19/32	15/32	1	15/32	1-5/16	1.2205	0.5	3/8	UC203-11		0.57
UCF204	20	86	64	15	12	25.5	12	33.3	31	12.7	M10	UC204	F204	0.56
UCF204-12	3/4	3-3/8	2-33/64	19/32	15/32	1	15/32	1-5/16	1.2205	0.5	3/8	UC204-12		0.56
UCF205	25	95	70	16	14	27	12	35.8	34.1	14.3	M10	UC205	F205	0.8
UCF205-13	13/16											UC205-13		0.84
UCF205-14	7/8	3-3/4	2-3/4	5/8	35/64	1-1/16	15/32	1-13/32	1.3425	0.563	3/8	UC205-14		0.83
UCF205-15	15/16											UC205-15		0.81
UCF205-16	1											UC205-16		0.8
UCF206	30	108	83	18	14	31	12	40.2	38.1	15.9	M10	UC206	F206	1.12
UCF206-17	1-1/16											UC206-17		
UCF206-18	1-1/8	4-1/4	3-17/64	45/64	35/64	1-7/32	15/32	1-19/32	1.5	0.626	3/8	UC206-18		1.14
UCF206-19	1-3/16											UC206-19		1.12
UCF206-20	1-1/4											UC206-20		1.11
UCF207	35	117	92	19	16	34	14	44.4	42.9	17.5	M12	UC207	F207	1.46
UCF207-20	1-1/4											UC207-20		
UCF207-21	1-5/16	4-39/64	3-5/8	3/4	5/8	1-11/32	35/64	1-3/4	1.689	0.689	7/16	UC207-21		1.49
UCF207-22	1-3/8											UC207-22		1.46
UCF207-23	1-7/16											UC207-23		1.43
UCF208	40	130	102	21	16	36	16	51.2	49.2	19	M14	UC208	F208	1.84
UCF208-24	1-1/2	5-1/8	4-1/64	53/64	5/8	1-27/64	5/8	2-1/64	1.937	0.748	1/2	UC208-24		
UCF208-25	1-9/16											UC208-25		1.85
UCF209	45	137	105	22	18	38	16	52.2	49.2	19	M14	UC209	F209	2.15
UCF209-26	1-5/8	5-13/32	4-9/64	55/64	23/32	1-1/2	5/8	2-1/16	1.937	0.748	1/2	UC209-26		
UCF209-27	1-11/16											UC209-27		2.21
UCF209-28	1-3/4											UC209-28		2.17
UCF210	50	143	111	22	18	40	16	54.6	51.6	19	M14	UC210	F210	2.42
UCF210-29	1-13/16											UC210-29		
UCF210-30	1-7/8	5-5/8	4-3/8	5-5/64	23/32	1-9/16	5/8	2-5/32	2.0315	0.748	1/2	UC210-30		2.49
UCF210-31	1-15/16											UC210-31		2.44
UCF210-32	2											UC210-32		2.4
UCF211	55	162	130	25	20	43	19	58.4	55.6	22.2	M16	UC211	F211	3.31
UCF211-32	2											UC211-32		
UCF211-33	2-1/16	6-3/8	5-1/8	63/64	25/32	1-11/16	3/4	2-5/16	2.189	0.874	5/8	UC211-33		3.4
UCF211-34	2-1/8											UC211-34		3.35
UCF211-35	2-3/16											UC211-35		3.29
UCF212	60	175	143	29	20	48	19	68.7	65.1	25.4	M16	UC212	F212	4.28
UCF212-36	2-1/4											UC212-36		
UCF212-37	2-5/16	6-57/64	5-5/8	1-9/64	25/32	1-57/64	3/4	2-45/64	2.563	1	5/8	UC212-37		4.33
UCF212-38	2-3/8											UC212-38		4.26
UCF212-39	2-7/16											UC212-39		4.19
UCF213	65	187	149	30	22	50	19	69.7	65.1	25.4	M16	UC213	F213	4.99
UCF213-40	2-1/2	7-23/64	5-55/64	1-3/16	55/64	1-31/32	3/4	2-3/4	2.563	1	5/8	UC213-40		
UCF213-41	2-9/16											UC213-41		4.99



Unit No.	Dimensions (mm/inch)										Bolt Size (mm/inch)	Bearing No.	Housing No.	Weight (kg)
	d	a	e	i	g	l	s	z	B	n				
UCF214	70	193	152	31	22	54	19	75.4	74.6	30.2	M16	UC214		5.85
UCF214-42	2-5/8											UC214-42	F214	6.06
UCF214-43	2-11/16	7-19/32	5-63/64	1-7/32	55/64	2-1/8	3/4	2-31/32	2.937	1.189	5/8	UC214-43		5.96
UCF214-44	2-3/4											UC214-44		5.86
UCF215	75	200	159	34	22	56	19	78.5	77.8	33.3	M16	UC215		
UCF215-45	2-13/16											UC215-45	F215	7.16
UCF215-46	2-7/8	7-7/8	6-17/64	1-11/32	55/64	2-7/32	3/4	3-3/32	3.063	1.311	5/8	UC215-46		7.05
UCF215-47	2-15/16											UC215-47		6.94
UCF215-48	3											UC215-48		6.82
UCF216	80	208	165	34	22	58	23	83.3	82.6	33.3	M20	UC216		7.5
UCF216-49	3-1/16											UC216-49	F216	7.68
UCF216-50	3-1/8	8-3/16	6-1/2	1-11/32	55/64	2-9/32	29/32	3-9/32	3.252	1.311	3/4	UC216-50		7.55
UCF216-51	3-3/16											UC216-51		7.42
UCF217	85	220	175	36	24	63	23	87.6	85.7	34.1	M20	UC217		
UCF217-52	3-1/4											UC217-52	F217	9.88
UCF217-53	3-5/16	8-21/32	6-57/64	1-27/64	15/16	2-15/32	29/32	3-7/16	3.374	1.343	3/4	UC217-53		9.74
UCF217-55	3-7/16											UC217-55		9.45
UCF218	90	235	187	40	24	68	23	96.3	96	39.7	M20	UC218		12.06
UCF218-56	3-1/2	9-1/4	7-23/64	1-37/64	15/16	2-11/16	29/32	3-25/32	3.7795	1.563	3/4	UC218-56	F218	12.17

Notes



NSK Sales Offices – Europe, Middle East and Africa

UK

NSK UK Ltd.
Northern Road, Newark
Nottinghamshire NG24 2JF
Tel. +44 (0) 1636 605123
Fax +44 (0) 1636 643276
info-uk@nsk.com

Middle East

NSK Bearings Gulf Trading Co.
JAFZA View 19, Floor 24 Office 2/3
Jebel Ali Downtown,
PO Box 262163
Dubai, UAE
Tel. +971 (0) 4 804 8202
Fax +971 (0) 4 884 7227
info-me@nsk.com

South Africa

NSK South Africa (Pty) Ltd.
27 Galaxy Avenue
Linbro Business Park
Sandton 2146
Tel. +27 (011) 458 3600
Fax +27 (011) 458 3608
nsk-sa@nsk.com

France

NSK France S.A.S.
Quartier de l'Europe
2, rue Georges Guynemer
78283 Guyancourt Cedex
Tel. +33 (0) 1 30573939
Fax +33 (0) 1 30570001
info-fr@nsk.com

Nordic

NSK Europe Norwegian Branch NUF
Østre Kullerød 5
N-3241 Sandefjord
Tel. +47 33 293160
Fax +47 33 429002
info-n@nsk.com

Spain

NSK Spain, S.A.
C/ Tarragona, 161 Cuerdo Bajo
2ª Planta, 08014 Barcelona
Tel. +34 93 2892763
Fax +34 93 4335776
info-es@nsk.com

Germany, Austria, Switzerland, Benelux

NSK Deutschland GmbH
Harkortstraße 15
40880 Ratingen
Tel. +49 (0) 2102 4810
Fax +49 (0) 2102 4812290
info-de@nsk.com

Poland & CEE

NSK Polska Sp. z o.o.
Warsaw Branch
Ul. Migdałowa 4/73
02-796 Warszawa
Tel. +48 22 645 15 25
Fax +48 22 645 15 29
info-pl@nsk.com

Turkey

NSK Rulmanları Orta Doğu Tic. Ltd. Şti
19 Mayıs Mah. Atatürk Cad.
Ulya Engin İş Merkezi No: 68/3 Kat. 6
P.K.: 34736 - Kozyatağı - İstanbul
Tel. +90 216 4777111
Fax +90 216 4777174
turkey@nsk.com

Italy

NSK Italia S.p.A.
Via Garibaldi, 215
20024 Garbagnate
Milanese (MI)
Tel. +39 02 995 191
Fax +39 02 990 25 778
info-it@nsk.com

Russia

NSK Polska Sp. z o.o.
Russian Branch
Office I 703, Bldg 29,
18th Line of Vasilievskiy Ostrov,
Saint-Petersburg, 199178
Tel. +7 812 3325071
Fax +7 812 3325072
info-ru@nsk.com

Please also visit our website: www.nsk-europe.com

Global NSK: www.nsk.com

