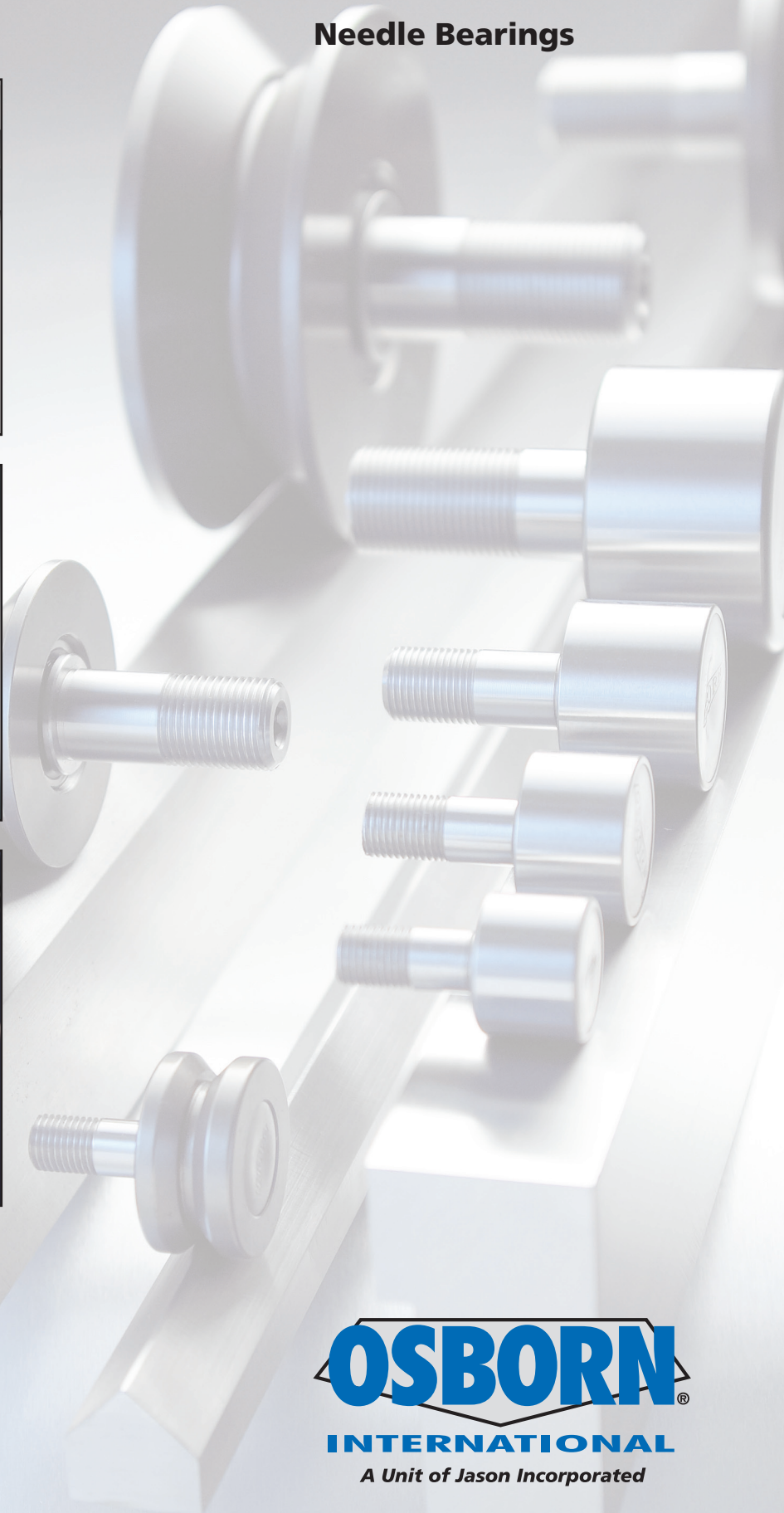
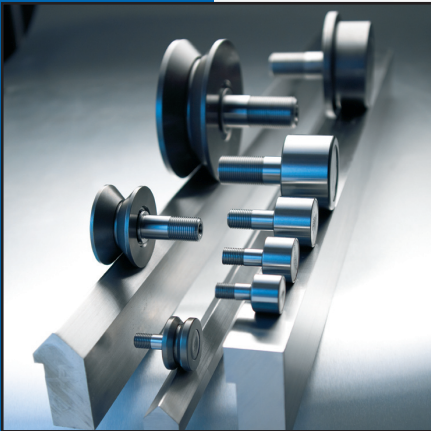
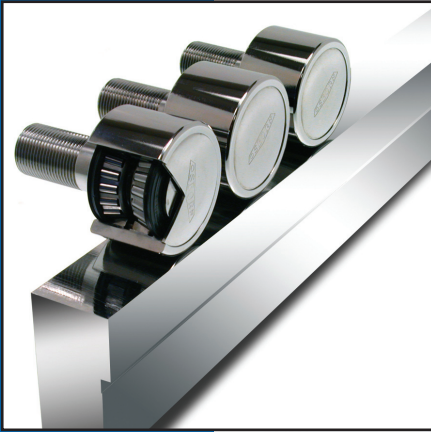


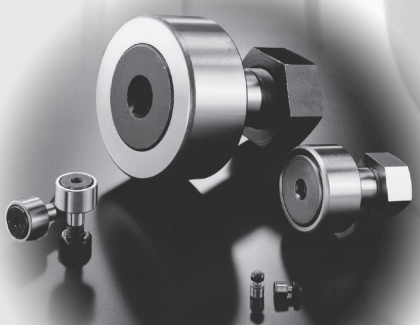
Load Runners®

Needle Bearings



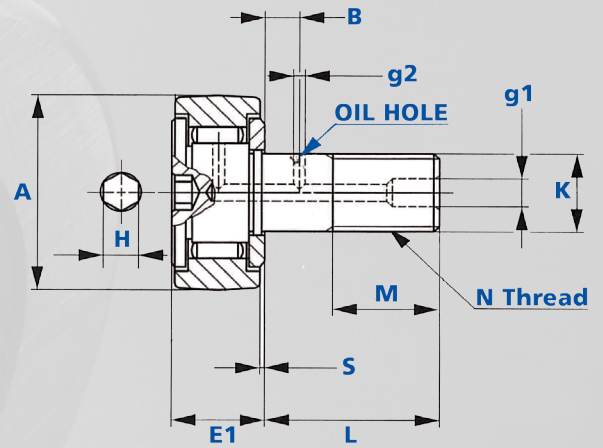
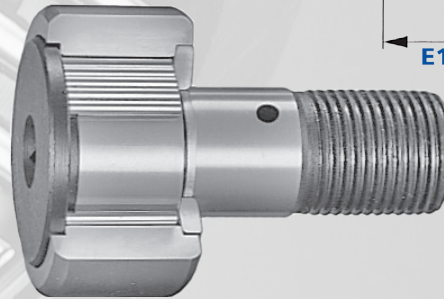
Part No.	Item No.	A	E1	K	L	M	N	S	H	g1	g2	B	
		Roller Dia.	Roller Width	Stud Dia.	Stud Length	Thread Length	Fine Thread	Shldr. Length	Hex Size	Fitting Diameter			
		+0.000 -0.001		+0.001 -0.000									
NCF1/2SB	90916	0.500	0.406	0.190	0.625	0.250	10-32	0.031	1/8	-	-	-	
NCF5/8SB	90905	0.625	0.468	0.250	0.750	0.313	1/4-28	0.031	1/8	-	-	-	
NCF3/4SB	90906	0.750	0.531	0.375	0.875	0.375	3/8-24	0.031	3/16	3/16	3/32	1/4	
NCF7/8SB	90907	0.875	0.531	0.375	0.875	0.375	3/8-24	0.031	3/16	3/16	3/32	1/4	
NCF1SB	90908	1.000	0.656	0.437	1.000	0.500	7/16-20	0.031	1/4	3/16	1/8	1/4	
NCF1-1/8SB	90934	1.125	0.656	0.437	1.000	0.500	7/16-20	0.031	1/4	3/16	1/8	1/4	
NCF1-1/4SB	90909	1.250	0.781	0.500	1.250	0.625	1/2-20	0.031	1/4	3/16	1/8	5/16	
NCF1-3/8SB	90910	1.375	0.781	0.500	1.250	0.625	1/2-20	0.031	1/4	3/16	1/8	5/16	
NCF1-1/2SB	90911	1.500	0.906	0.625	1.500	0.750	5/8-18	0.031	5/16	3/16	5/32	3/8	
NCF1-5/8SB	90935	1.625	0.906	0.625	1.500	0.750	5/8-18	0.031	5/16	3/16	5/32	3/8	
NCF1-3/4SB	90912	1.750	1.031	0.750	1.750	0.875	3/4-16	0.031	5/16	3/16	5/32	7/16	
NCF1-7/8SB	90936	1.875	1.031	0.750	1.750	0.875	3/4-16	0.031	5/16	3/16	5/32	7/16	
NCF2SB	90913	2.000	1.281	0.875	2.000	1.000	7/8-14	0.031	7/16	3/16	3/16	1/2	
NCF2-1/2SB	90914	2.500	1.531	1.000	2.250	1.125	1-14	0.031	1/2	3/16	3/16	9/16	
NCF3SB	90915	3.000	1.781	1.250	2.500	1.250	1 1/4-12	0.062	3/4	1/4	3/16	5/8	

Part No.	Item No.	A	E1	K	L	M	N	S	T	U	W	H	g1
		Roller Dia.	Roller Width	Stud Dia.	Stud Length	Thread Length	Fine Thread	Shldr. Length	Ecc. Dia.	Eccent. Length	Eccent.	Hex Size	Fitting Diameter
		+0.000 -0.001		+0.001 -0.000					+0.001 -0.001				
NCFE1/2SB	90938	0.500	0.406	0.190	0.625	0.375	10-32	0.031	0.253	0.250	0.010	1/8	-
NCFE5/8SB	90939	0.625	0.468	0.250	0.750	0.312	1/4-28	0.031	0.378	0.437	0.015	1/8	-
NCFE3/4SB	90940	0.750	0.531	0.375	0.875	0.375	3/8-24	0.031	0.503	0.500	0.015	3/16	3/16
NCFE7/8SB	90941	0.875	0.531	0.375	0.875	0.375	3/8-24	0.031	0.503	0.500	0.015	3/16	3/16
NCFE1SB	90942	1.000	0.656	0.437	1.000	0.500	7/16-20	0.031	0.628	0.500	0.030	1/4	3/16
NCFE1-1/4SB	90944	1.250	0.781	0.500	1.250	0.625	1/2-20	0.031	0.690	0.625	0.030	1/4	3/16
NCFE1-3/8SB	90945	1.375	0.781	0.500	1.250	0.625	1/2-20	0.031	0.690	0.625	0.030	1/4	3/16
NCFE1-1/2SB	90946	1.500	0.906	0.625	1.500	0.750	5/8-18	0.031	0.878	0.750	0.030	5/16	3/16
NCFE1-3/4SB	90948	1.750	1.031	0.750	1.750	0.875	3/4-16	0.031	1.003	0.875	0.030	5/16	3/16
NCFE2SB	90950	2.000	1.281	0.875	2.000	1.000	7/8-14	0.031	1.190	1.000	0.030	7/16	3/16
NCFE2-1/2SB	90951	2.500	1.531	1.000	2.250	1.125	1-14 NS	0.031	1.315	1.125	0.030	1/2	3/16
NCFE3SB	90952	3.000	1.781	1.250	2.500	1.250	1 1/4-12	0.062	1.503	1.250	0.030	3/4	1/4

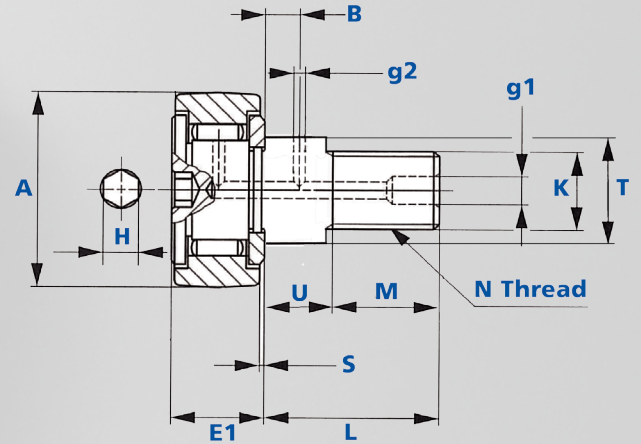
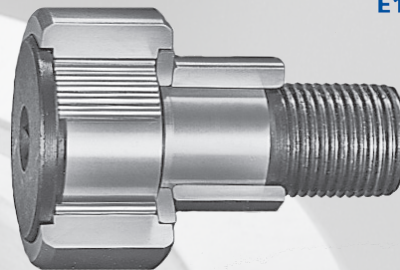


Part No.	Item No.	A	E1	E2	P	R
		Roller Dia.	Roller Width	Tread Width	Bore	Shoulder Diameter
		+0.000 -0.001	+0.0051 -0.0098	+0.000 -0.005	+0.0002 -0.0004	
NCFY3/4S	90917	0.750	0.5625	0.500	0.2500	0.567
NCFY7/8S	90918	0.875	0.5625	0.500	0.2500	0.567
NCFY1S	90919	1.000	0.6875	0.625	0.3125	0.772
NCFY1-1/4S	90920	1.250	0.8125	0.750	0.3750	0.984
NCFY1-1/2S	90921	1.500	0.9375	0.875	0.4375	1.134
NCFY1-3/4S	90922	1.750	1.0625	1.000	0.5000	1.287
NCFY2S	90923	2.000	1.3125	1.250	0.6250	1.417
NCFY2-1/4S	90924	2.250	1.3125	1.250	0.6250	1.417
NCFY2-1/2S	90925	2.500	1.5625	1.500	0.7500	1.705
NCFY3S	90926	3.000	1.8125	1.750	1.0000	2.125
NCFY4S	90927	4.000	2.3125	2.250	1.2500	2.797

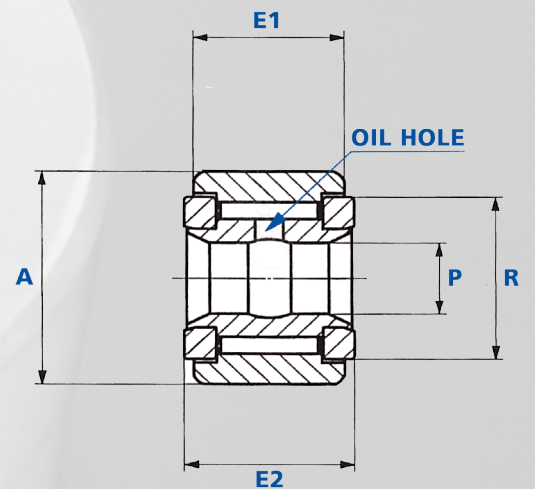
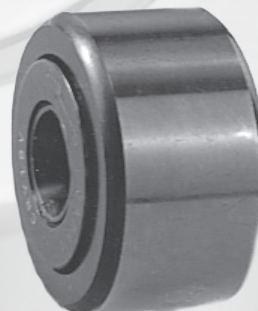
Part No.	Basic Dynamic Load Rating	Basic Static Load Rating	Maximum Tightening Torque
			ft-lbs
NCF1/2SB	1059	1216	1.0
NCF5/8SB	1425	1918	2.5
NCF3/4SB	1958	2765	8.0
NCF7/8SB	1958	2765	8.0
NCF1SB	2945	5103	12.8
NCF1-1/8SB	2945	5103	12.8
NCF1-1/4SB	5305	7126	20.4
NCF1-3/8SB	5305	7126	20.4
NCF1-1/2SB	6340	9014	41.1
NCF1-5/8SB	6340	9014	41.1
NCF1-3/4SB	7936	12500	73.8
NCF1-7/8SB	7936	12500	73.8
NCF2SB	10274	18120	119.5
NCF2-1/2SB	13803	26078	-
NCF3SB	17445	38667	368.8



Part No.	Basic Dynamic Load Rating	Basic Static Load Rating	Maximum Tightening Torque
			ft-lbs
NCFE1/2SB	958	1068	4.8
NCFE5/8SB	1311	1722	10.2
NCFE3/4SB	1958	2765	16.2
NCFE7/8SB	1958	2765	-
NCFE1SB	2945	5103	43.1
NCFE1-1/4SB	5305	7126	87.8
NCFE1-3/8SB	5305	7126	-
NCFE1-1/2SB	6340	9014	158.6
NCFE1-3/4SB	7936	12500	-
NCFE2SB	10274	18120	-
NCFE2-1/2SB	13803	26078	-
NCFE3SB	17445	38667	-



Part No.	Basic Dynamic Load Rating	Basic Static Load Rating
NCFY3/4S	1958	2765
NCFY7/8S	1958	2765
NCFY1S	2945	5103
NCFY1-1/4S	5305	7126
NCFY1-1/2S	6340	9014
NCFY1-3/4S	7936	12500
NCFY2S	10274	18120
NCFY2-1/4S	10274	18120
NCFY2-1/2S	13803	26078
NCFY3S	17445	38667
NCFY4S	31923	71264

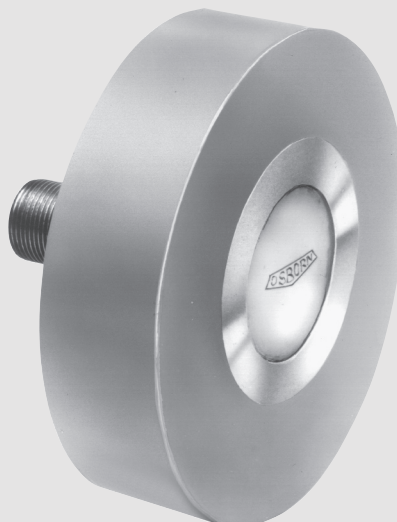
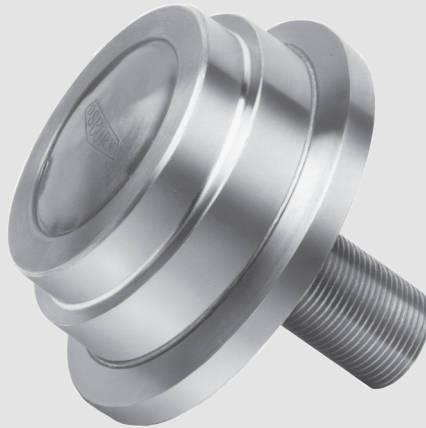


Load Runners

In addition to the standard Load Runners idler-rollers featured in our full line catalog, we offer custom tread profiles, studs and special features. A few examples include:

- Crowned profiles
- Solid lubricants
- Double-flange rollers
- Stainless steel treads, studs
- Special plating (zinc, chrome, etc.)
- Non-metallic tread materials (urethane, etc.)
- Special seals
- Special lubricants
- Provision for re-lubrication

Consult Osborn International with special features or requirements not listed here.



OSBORN[®]
INTERNATIONAL

A Unit of Jason Incorporated

5401 Hamilton Avenue
Cleveland, OH 44114

phone: 800-720-5248

fax: 216-361-1606

web: www.loadrunners.com

email: rollers@osborn.com

LITLRNB 0507 5K v2