

NB

NEW ITEM

SGL-HYF AND -HYE types

SLIDE GUIDE

EXTRA LONG BLOCK NOW AVAILABLE!



ISO9001/ISO14001



NIPPON BEARING CO., LTD.

NB

SLIDE GUIDE SGL type NEW Lineup

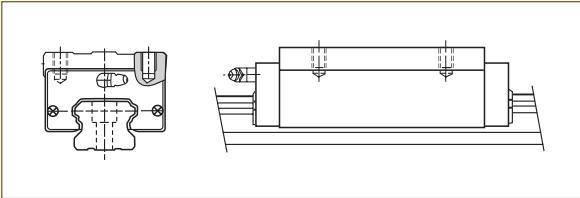
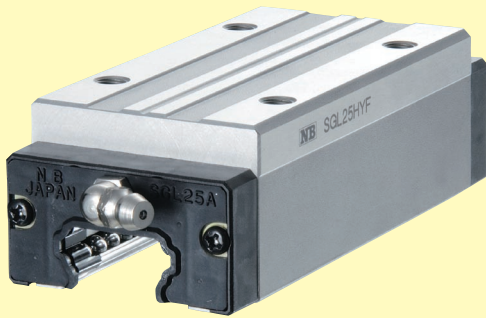
SGL-HYF and -HYE type

SGL-H SERIES NOW HAS AN EXTRA LONG BLOCK DESIGN FOR HIGHER LOAD CAPACITY AND MOMENT LOADS.

BLOCK TYPES

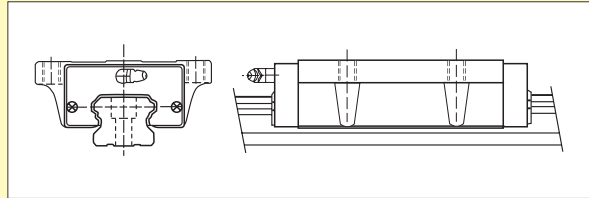
SGL-HYF type

P.3

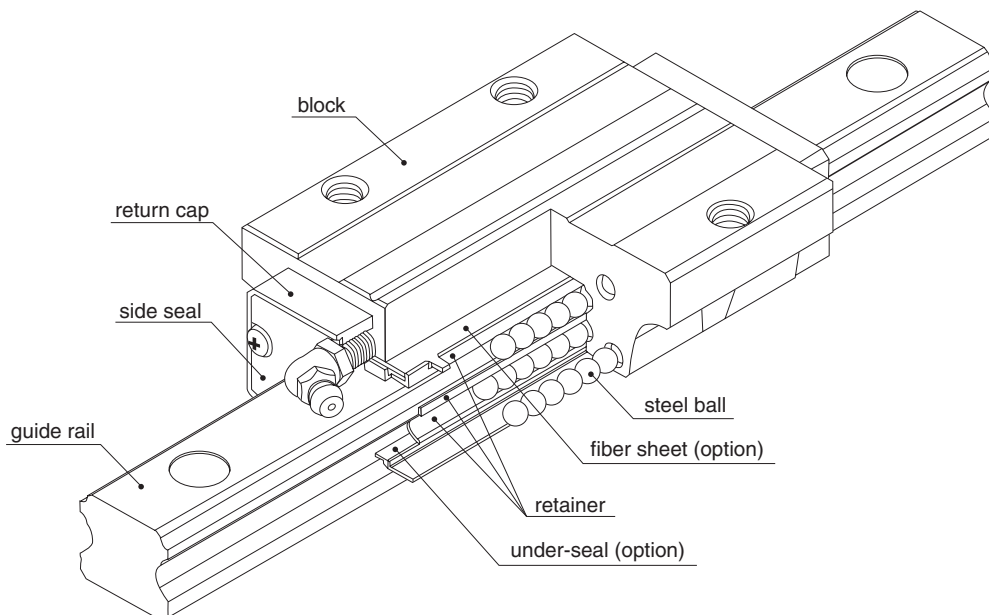


SGL-HYE type

P.5



STRUCTURE



ACCURACY

Three accuracy grades are available: normal-grade (no suffix), high-grade (H), and precision-grade (P).

Table 1 Accuracy

part number	SGL15,20			SGL25,30,35			SGL45		
	normal	high	precision	normal	high	precision	normal	high	precision
accuracy grade	normal	high	precision	normal	high	precision	normal	high	precision
accuracy symbol	none	H	P	none	H	P	none	H	P
allowable dimensional tolerance for height H	±0.1	±0.03	-0.03~0	±0.1	±0.04	-0.04~0	±0.1	±0.05	-0.05~0
paired difference for height H	0.02	0.01	0.006	0.02	0.015	0.007	0.03	0.015	0.007
allowable dimensional tolerance for width W	±0.1	±0.03	-0.03~0	±0.1	±0.04	-0.04~0	±0.1	±0.05	-0.05~0
paired difference for width W	0.02	0.01	0.006	0.03	0.015	0.007	0.03	0.02	0.01
Running parallelism of surface C to surface A Running parallelism of surface D to surface B	refer to Figure 1								

unit/mm

Figure 1 Motion Accuracy

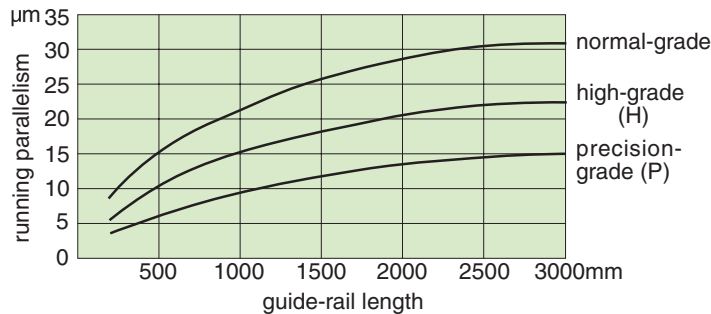
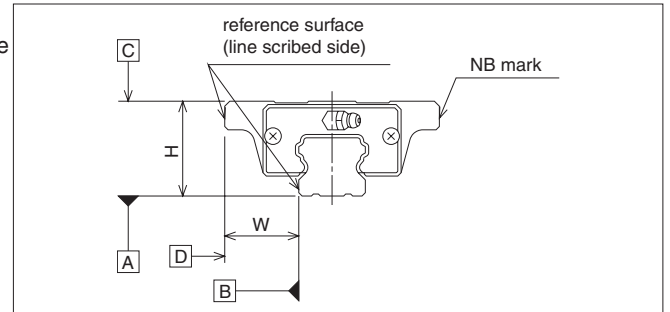


Figure 2 Accuracy



PRE-LOAD

SGL type slide guides are available with a standard pre-load (no suffix), light pre-load (T1), and medium pre-load (T2).

Table 2 Pre-load Symbol and Radial Clearance

pre-load category	standard	light	medium
pre-load symbol	none	T1	T2
SGL15	- 4~+2	-12~- 4	-
SGL20	- 5~+2	-14~- 5	-23~-14
SGL25	- 6~+3	-16~- 6	-26~-16
SGL30	- 7~+4	-19~- 7	-31~-19
SGL35	- 8~+4	-22~- 8	-35~-22
SGL45	-10~+5	-25~-10	-40~-25

Table 3 Operating Condition and Pre-Load

category	symbol	operating condition
standard	none	Minute vibration is applied. Precision motion is required. Moment in a given direction is applied.
light	T1	Light vibration is applied. Light combined load is applied. Moment is applied.
medium	T2	Shock/vibration is applied. Over-hang load is applied. Combined load is applied.

MOUNTING

As shown in Figure 3, the standard method of slide guide mounting is to bring the reference surface of the rail and/or block into contact with the shoulder on the mounting surface. The shape of the shoulder should be finished to no more than the value shown in Table 5, to prevent interfere with the corner of the rail or block.

Use a torque wrench to attach the rail with the set torque, to ensure the precision performances. The recommended torque values are shown in Table 4. Adjust the torque value as needed according to the operating conditions.

Table 4 Recommended Torque

bolt size	M3	M4	M5	M6	M8	M12
recommended torque	1.4	3.2	6.6	11.2	27.6	96.4

(When using alloy steel bolts)

Figure 3 Mounting Reference Surface Shapes

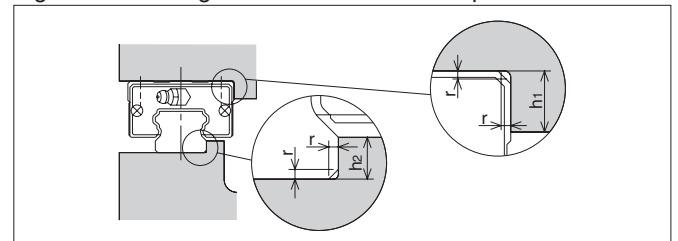


Table 5 Mounting Surface Dimensions

part number	h ₁	h ₂	r _{max}
SGL15	4	3.5	0.5
SGL20	5	5	0.5
SGL25	5	5.5	1
SGL30	6	7.5	1
SGL35	6	8	1
SGL45	8	8	1

SGL-HYF type



part number structure example **SGL 15 HYF B 2 T1 - 589 P / W2 FS LB F J - KGL**

SGL type

size

block style

seal

blank	With side-seals
B	With side seals + under-seals
BW	With double seals + under-seals
BS	B + scraper

number of blocks per rail

symbol for pre-load

blank	standard
T1	light
T2	medium

total length of rail

accuracy grade

blank	standard
H	high
P	precision

symbol for grease

blank	standard grease
KGL	lithium-based grease
KGU	urea-based grease
KGF	anti-fretting grease
GK	K-grease

with bellows

with rail mounting hole caps with low temperature black chrome treatment with Fiber Sheet
Fiber sheet comes only with standard grease.

symbol for number of rails

blank	single rail
W2	double rails
W3	triple rails

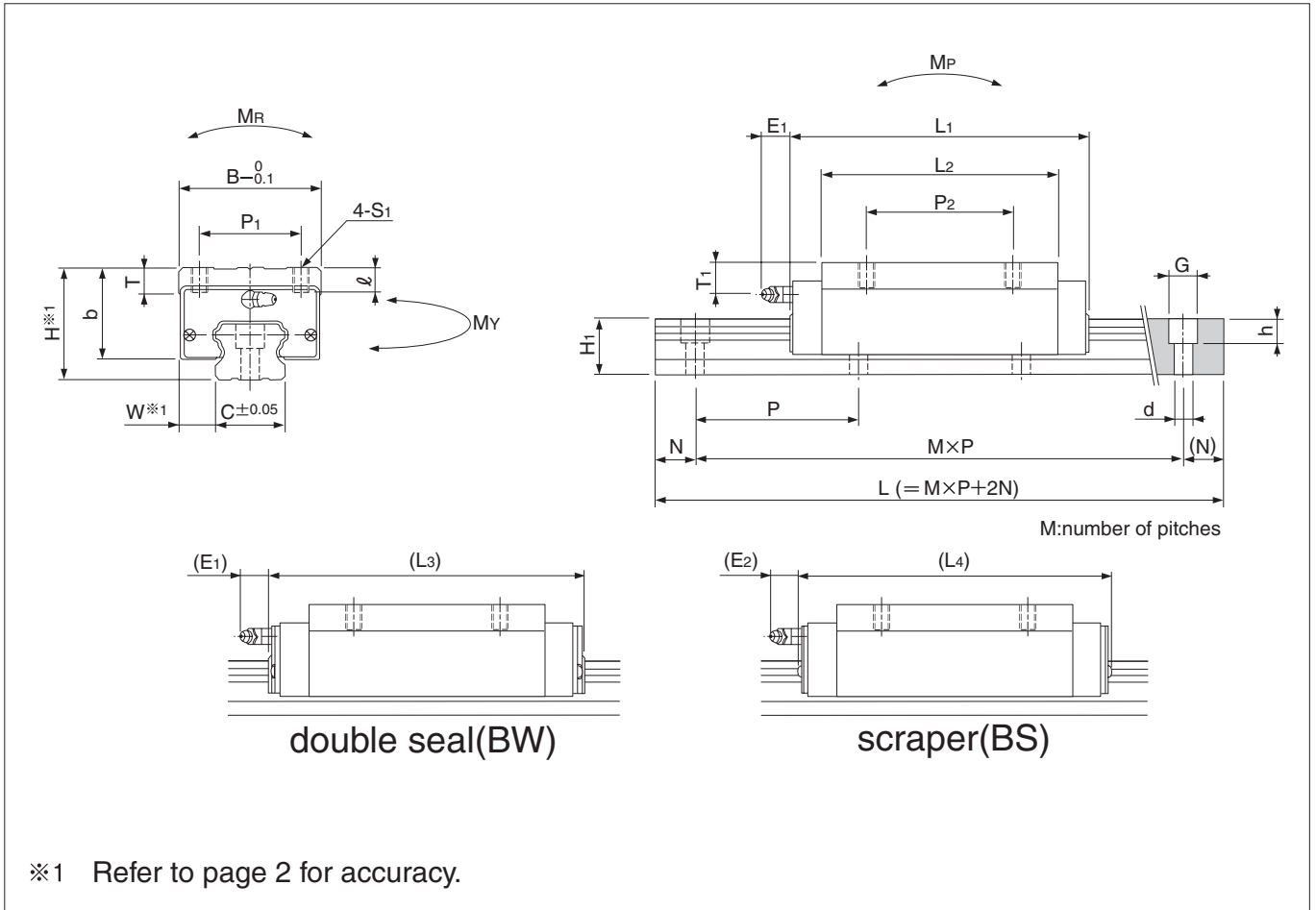
The symbol for the number of rails does not mean the number of rails ordered.

part number	assembly dimensions		block dimensions												
	H	W	B	L ₁	L ₂	L ₃	L ₄	P ₁	P ₂	S ₁	ℓ	T	b	E ₁	E ₂
	mm	mm	mm	mm	mm	mm	mm	mm	mm	mm	mm	mm	mm	mm	mm
SGL15HYF	28	9.5	34	79	61	82.5	85.6	26	26	M4	5	6	23.7	6	5.4
SGL20HYF	30	12	44	96	77.6	102.2	102.6	32	50	M5	6	9.5	24	12	11
SGL25HYF	40	12.5	48	109	88	115.4	116.2	35	50	M6	8	9	33		
SGL30HYF	45	16	60	129	101	137.6	136.6	40	60	M8	10	13	35.5		
SGL35HYF	55	18	70	147	116	155.6	154.6	50	72		12	13	45		
SGL45HYF	70	20.5	86	171	134	179.5	180	60	80	M10	17	15	60	15	15

part number	standard rail length															
	L mm															
SGL15	160	220	280	340	400	460	520	580	640	700	760	820	880	940	1,000	1,120
SGL20	220	280	340	400	460	520	580	640	700	760	820	880	940	1,000	1,120	1,240
SGL25	220	280	340	400	460	520	580	640	700	760	820	880	940	1,000	1,120	1,240
SGL30	280	360	440	520	600	680	760	840	920	1,000	1,080	1,160	1,240	1,320	1,400	1,480
SGL35	280	360	440	520	600	680	760	840	920	1,000	1,080	1,160	1,240	1,320	1,400	1,480
SGL45	570	675	780	885	990	1,095	1,200	1,305	1,410	1,515	1,620	1,725	1,830	1,935	2,040	2,145

Rails exceeding the maximum specified length may be fabricated if joints are used. Contact NB for assistance.

SLIDE GUIDE SGL

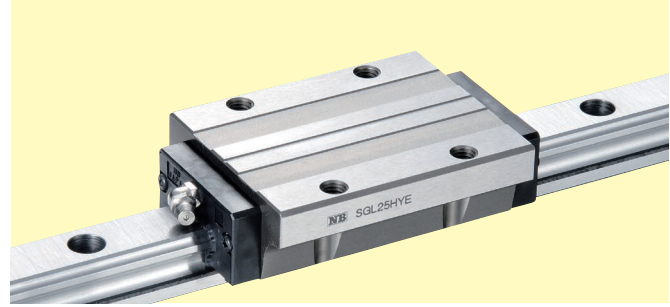


T ₁ mm	grease fitting	guide-rail dimensions					basic load rating		allowable static moment			mass		size
		H ₁ mm	C mm	d×G×h mm	N mm	P mm	dynamic C kN	static C ₀ kN	M _P N·m	M _Y N·m	M _R N·m	block kg	guide rail kg/m	
9	pressed fitting	13.5	15	4.5×7.5×5.3	20	60	14.6	25.6	238	238	200	0.3	1.3	15
8	B-M6F	16	20	6×9.5×8.5			23.9	40.2	467	467	432	0.5	2.1	20
13.5		20	23	7×11×9			32.8	54.5	723	723	655	0.9	3.0	25
12		24	28	9×14×12		44.6	73.8	1,144	1,144	1,074	1.3	4.6	30	
15.5		27.5	34			61.9	97.2	1,722	1,722	1,782	2.2	6.2	35	
20	B-PT1/8	36.5	45	14×20×17	22.5	105	91.4	134.9	2,681	2,681	3,082	4.0	10.5	45

1kN ≅ 102kgf 1N·m ≅ 0.102kgf·m

								maximum length mm
1,240	1,360	1,480						2,000
1,360	1,480	1,600	1,660	1,720	1,840	1,960	3,000	
1,360	1,480	1,600	1,660	1,720	1,840	1,960	3,000	
1,640	1,720	1,800	1,880	1,960				3,000
1,640	1,720	1,800	1,880	1,960				3,000
2,250	2,355	2,460	2,565	2,670	2,775	2,880	2,985	3,000

SGL-HYE type



part number structure example **SGL 15 HYE B 2 T1 - 589 P / W2 FS LB F J - KGL**

SGL type

size

block style

seal

blank	With side-seals
B	With side seals + under-seals
BW	With double seals + under-seals
BS	B + scraper

number of blocks per rail

symbol for pre-load

blank	standard
T1	light
T2	medium

total length of rail

accuracy grade

blank	standard
H	high
P	precision

symbol for grease

blank	standard grease
KGL	lithium-based grease
KGU	urea-based grease
KGF	anti-fretting grease
GK	K-grease

with bellows

with rail mounting hole caps

with low temperature black chrome treatment

with Fiber Sheet

Fiber sheet comes only with standard grease.

symbol for number of rails

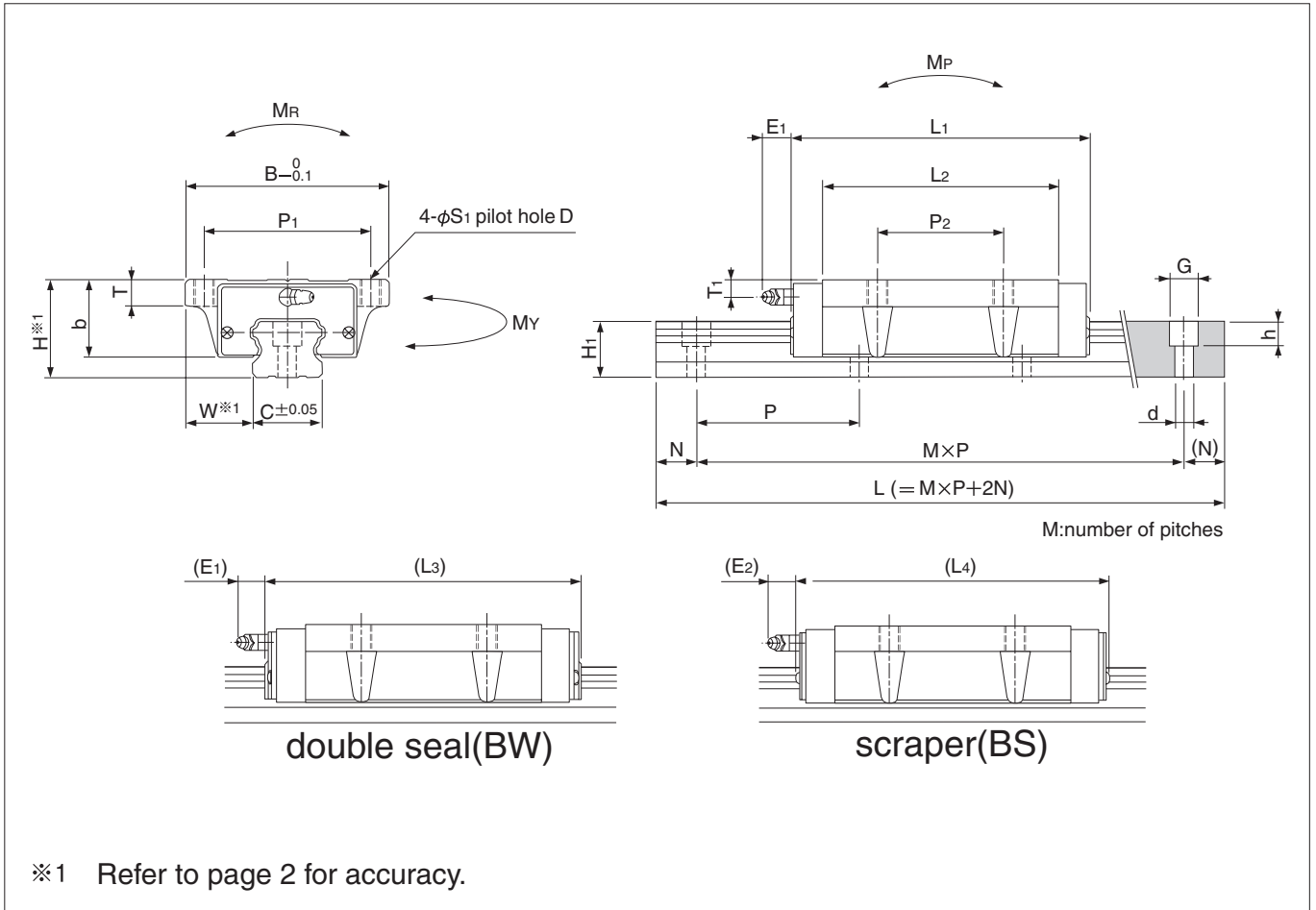
blank	single rail
W2	double rails
W3	triple rails

The symbol for the number of rails does not mean the number of rails ordered.

part number	assembly dimensions		block dimensions												
	H	W	B	L ₁	L ₂	L ₃	L ₄	P ₁	P ₂	S ₁	D	T	b	E ₁	E ₂
	mm	mm	mm	mm	mm	mm	mm	mm	mm	mm	mm	mm	mm	mm	mm
SGL15HYE	24	16	47	79	61	82.5	85.6	38	30	M5	4.4	7.5	19.7	6	5.4
SGL20HYE	30	21.5	63	96	77.6	102.2	102.6	53	40	M6	5.4	10.5	24	12	11
SGL25HYE	36	23.5	70	109	88	115.4	116.2	57	45	M8	6.8	12.5	29		
SGL30HYE	42	31	90	129	101	137.6	136.6	72	52	M10	8.5	10	32.5		
SGL35HYE	48	33	100	147	116	155.6	154.6	82	62			13	38		
SGL45HYE	60	37.5	120	171	134	179.5	180	100	80	M12	10.5	15	50	15	15

part number	standard rail length															
	L mm															
SGL15	160	220	280	340	400	460	520	580	640	700	760	820	880	940	1,000	1,120
SGL20	220	280	340	400	460	520	580	640	700	760	820	880	940	1,000	1,120	1,240
SGL25	220	280	340	400	460	520	580	640	700	760	820	880	940	1,000	1,120	1,240
SGL30	280	360	440	520	600	680	760	840	920	1,000	1,080	1,160	1,240	1,320	1,400	1,480
SGL35	280	360	440	520	600	680	760	840	920	1,000	1,080	1,160	1,240	1,320	1,400	1,480
SGL45	570	675	780	885	990	1,095	1,200	1,305	1,410	1,515	1,620	1,725	1,830	1,935	2,040	2,145

Rails exceeding the maximum specified length may be fabricated if joints are used. Contact NB for assistance.



T ₁ mm	grease fitting	guide-rail dimensions					basic load rating		allowable static moment			mass		size
		H ₁ mm	C mm	d×G×h mm	N mm	P mm	dynamic C kN	static C ₀ kN	M _P N·m	M _Y N·m	M _R N·m	block kg	guide rail kg/m	
5	pressed fitting	13.5	15	4.5×7.5×5.3	20	60	14.6	25.6	238	238	200	0.3	1.3	15
8	B-M6F	16	20	6×9.5×8.5			23.9	40.2	467	467	432	0.7	2.1	20
9.5		20	23	7×11×9			32.8	54.5	723	723	655	1.0	3.0	25
9		24	28	9×14×12		44.6	73.8	1,144	1,144	1,074	1.5	4.6	30	
8.5		27.5	34			61.9	97.2	1,722	1,722	1,782	2.2	6.2	35	
10	B-PT1/8	36.5	45	14×20×17	22.5	105	91.4	134.9	2,681	2,681	3,082	4.0	10.5	45

1kN ≅ 102kgf 1N·m ≅ 0.102kgf·m

	maximum length mm
1,240 1,360 1,480	2,000
1,360 1,480 1,600 1,660 1,720 1,840 1,960	3,000
1,360 1,480 1,600 1,660 1,720 1,840 1,960	3,000
1,640 1,720 1,800 1,880 1,960	3,000
1,640 1,720 1,800 1,880 1,960	3,000
2,250 2,355 2,460 2,565 2,670 2,775 2,880 2,985	3,000

NB SLIDE GUIDE LINEUP

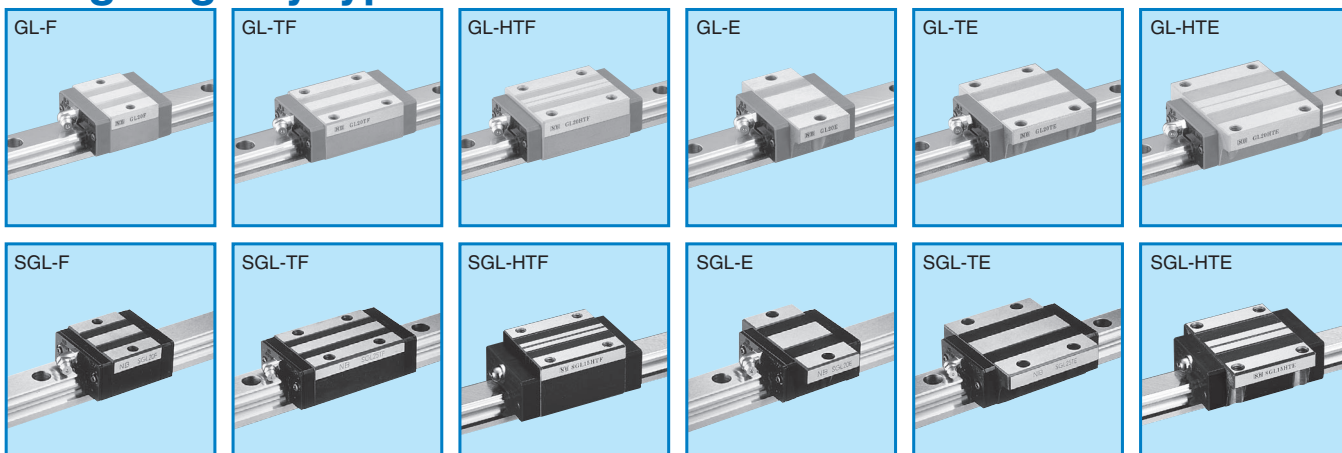
● miniature type (ball type)



● miniature type (roller type)



● high-rigidity type



● high-rigidity type (wide type)



● high-rigidity type (extra long type)



Contact NB for assistance.



NIPPON BEARING CO., LTD.

2833 Chiya, Ojya-city, Niigata-pref., 947-8503 JAPAN
 Phone:+81-258-82-0011 Fax:+81-258-81-1135
<http://www.nb-linear.co.jp>

NB Corporation of America

930 Muirfield Drive, Hanover Park, IL 60133
 Phone:(630)295-8880 Fax:(630)295-8881
 Toll Free:(800)521-2045

<http://www.nbcorporation.com>
 info@nbcorporation.com

Western Regional Office

2157 O'Toole Ave., Suite D, San Jose, CA 95131
 Phone:(408)435-1800 Fax:(408)435-1850
 Toll Free:(888)562-4175

Eastern Regional Office

52 First Street, Hackensack, NJ 07601
 Phone:(201)487-1441 Fax:(201)487-7107
 Toll Free:(800)981-8190

NB Europe B.V.

Boekweitstraat 21, 2153 GK Nieuw-Vennep, The Netherlands
 Phone:+31(0)252 463 200 Fax:+31(0)252 463 209
<http://www.nbeurope.com>
 info@nbeurope.com

No. 5620

First Edition:Jul.20,2007

Copyright©2007 Nippon Bearing Co.,Ltd.All rights reserved.