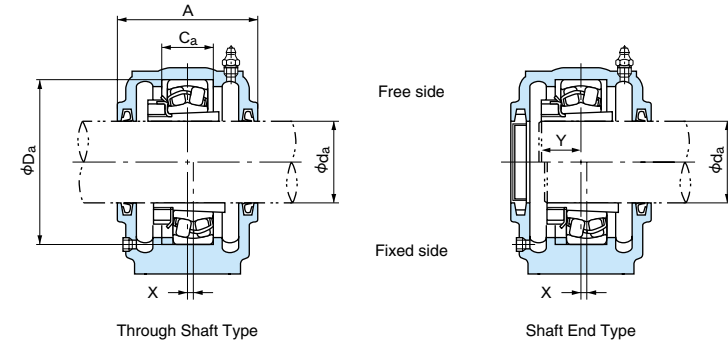
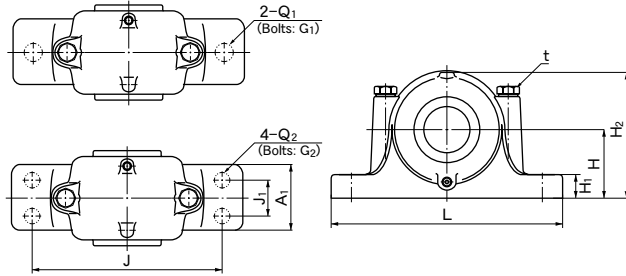


Plummer Block Housings

Flat Bottom Type SN5F, SN6F Series
for Bearing with Adapter Sleeve

Shaft Diameter : 20 ~ 60mm



1N=0.102kgf

| Shaft dia. da (mm) | Dimensions (mm) | | | | | | | | Bolt holes (Reference) | | | | t (Nominal) (Reference) | Mass (kg) (Reference) | Designations | | Applicable parts | | | | | | | | |
|--------------------------|-----------------|------------|-----|-----|----|----|-----|-------------|------------------------|----|-----------------|----|-------------------------------|-----------------------------|--------------|-----------------|-----------------------|-------------------|--------------------------------|------------------------------|-------------------|-------------|------------------------|--------|------------------|
| | Da (H8) | H (h13) | A | L | A1 | H1 | H2 | Ca (H13) | J | Q1 | G1 (Nominal) | J1 | | | Q2 | G2 (Nominal) | Through Shaft Type | Shaft End Type | Self-aligning ball bearings | Spherical roller bearings | Adapter sleeve | Oil seal | Locating ring | | Y (Reference) |
| | | | | | | | | | | | | | | | | | | | | | Designation | Q'ty | | | |
| 20 | 52 | 40 | 67 | 165 | 46 | 22 | 75 | 25 | 130 | 15 | M12 | 25 | 10 | M 8 | M 8 | 1.7 | SN505F | SN505FE | 1205K 2205K | — 22205EXK | H205X H305X | GS 5 | SR52×5 SR52×7 | 2 1 | 17 19 |
| | 62 | 50 | 80 | 185 | 52 | 22 | 90 | 34 | 150 | 15 | M12 | 25 | 12 | M10 | M 8 | 2.4 | SN605F | SN605FE | 1305K 2305K | 21305EK — | H305X H2305X | GS 5 | SR62×8.5 SR62×10 | 2 1 | 18 22 |
| 25 | 62 | 50 | 77 | 185 | 52 | 22 | 90 | 30 | 150 | 15 | M12 | 25 | 12 | M10 | M 8 | 2.5 | SN506F | SN506FE | 1206K 2206K | — 22206EXK | H206X H306X | GS 6 | SR62×7 SR62×10 | 2 1 | 18 20 |
| | 72 | 50 | 82 | 185 | 52 | 22 | 95 | 37 | 150 | 15 | M12 | 25 | 12 | M10 | M10 | 2.5 | SN606F | SN606FE | 1306K 2306K | 21306EK — | H306X H2306X | GS 6 | SR72×9 SR72×10 | 2 1 | 19 23 |
| 30 | 72 | 50 | 82 | 185 | 52 | 22 | 95 | 33 | 150 | 15 | M12 | 25 | 12 | M10 | M10 | 2.6 | SN507F | SN507FE | 1207K 2207K | — 22207EXK | H207X H307X | GS 7 | SR72×8 SR72×10 | 2 1 | 19 22 |
| | 80 | 60 | 90 | 205 | 60 | 25 | 110 | 41 | 170 | 15 | M12 | 30 | 12 | M10 | M10 | 3.8 | SN607F | SN607FE | 1307K 2307K | 21307EK — | H307X H2307X | GS 7 | SR80×10 SR80×10 | 2 1 | 21 26 |
| 35 | 80 | 60 | 85 | 205 | 60 | 25 | 110 | 33 | 170 | 15 | M12 | 30 | 12 | M10 | M10 | 4.0 | SN508F | SN508FE | 1208K 2208K | — 22208EXK | H208X H308X | GS 8 | SR80×7.5 SR80×10 | 2 1 | 21 23 |
| | 90 | 60 | 95 | 205 | 60 | 25 | 115 | 43 | 170 | 15 | M12 | 30 | 12 | M10 | M10 | 4.0 | SN608F | SN608FE | 1308K 2308K | 21308EK 22308EXK | H308X H2308X | GS 8 | SR90×10 SR90×10 | 2 1 | 23 28 |
| 40 | 85 | 60 | 85 | 205 | 60 | 25 | 112 | 31 | 170 | 15 | M12 | 30 | 12 | M10 | M10 | 4.4 | SN509F | SN509FE | 1209K 2209K | — 22209EXK | H209X H309X | GS 9 | SR85×6 SR85×8 | 2 1 | 22 24 |
| | 100 | 70 | 105 | 255 | 70 | 28 | 130 | 46 | 210 | 19 | M16 | 35 | 15 | M12 | M12 | 6.0 | SN609F | SN609FE | 1309K 2309K | 21309EK 22309EXK | H309X H2309X | GS 9 | SR100×10.5 SR100×10 | 2 1 | 25 31 |
| 45 | 90 | 60 | 90 | 205 | 60 | 25 | 115 | 33 | 170 | 15 | M12 | 30 | 12 | M10 | M10 | 4.7 | SN510F | SN510FE | 1210K 2210K | — 22210EXK | H210X H310X | GS10 | SR90×6.5 SR90×10 | 2 1 | 24 25 |
| | 110 | 70 | 115 | 255 | 70 | 30 | 135 | 50 | 210 | 19 | M16 | 35 | 15 | M12 | M12 | 6.5 | SN610F | SN610FE | 1310K 2310K | 21310EK 22310EXK | H310X H2310X | GS10 | SR110×11.5 SR110×10 | 2 1 | 27 34 |
| 50 | 100 | 70 | 95 | 255 | 70 | 28 | 130 | 33 | 210 | 19 | M16 | 35 | 15 | M12 | M12 | 6.3 | SN511F | SN511FE | 1211K 2211K | — 22211EXK | H211X H311X | GS11 | SR100×6 SR100×8 | 2 1 | 25 27 |
| | 120 | 80 | 120 | 275 | 80 | 30 | 150 | 53 | 230 | 19 | M16 | 40 | 15 | M12 | M12 | 8.5 | SN611F | SN611FE | 1311K 2311K | 21311EK 22311EXK | H311X H2311X | GS11 | SR120×12 SR120×10 | 2 1 | 29 36 |
| 55 | 110 | 70 | 105 | 255 | 70 | 30 | 135 | 38 | 210 | 19 | M16 | 35 | 15 | M12 | M12 | 6.9 | SN512F | SN512FE | 1212K 2212K | — 22212EXK | H212X H312X | GS12 | SR110×8 SR110×10 | 2 1 | 26 29 |
| | 130 | 80 | 125 | 280 | 80 | 30 | 155 | 56 | 230 | 19 | M16 | 40 | 15 | M12 | M12 | 9.0 | SN612F | SN612FE | 1312K 2312K | 21312EK 22312EXK | H312X H2312X | GS12 | SR130×12.5 SR130×10 | 2 1 | 31 39 |
| 60 | 120 | 80 | 110 | 275 | 80 | 30 | 150 | 43 | 230 | 19 | M16 | 40 | 15 | M12 | M12 | 7.0 | SN513F | SN513FE | 1213K 2213K | — 22213EXK | H213X H313X | GS13 | SR120×10 SR120×12 | 2 1 | 28 32 |
| | 140 | 95 | 130 | 315 | 90 | 32 | 175 | 58 | 260 | 24 | M20 | 50 | 19 | M16 | M16 | 13 | SN613F | SN613FE | 1313K 2313K | 21313EK 22313EXK | H313X H2313X | GS13 | SR140×12.5 SR140×10 | 2 1 | 33 40 |

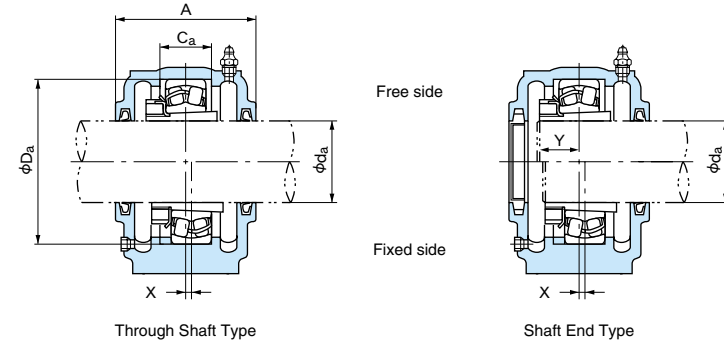
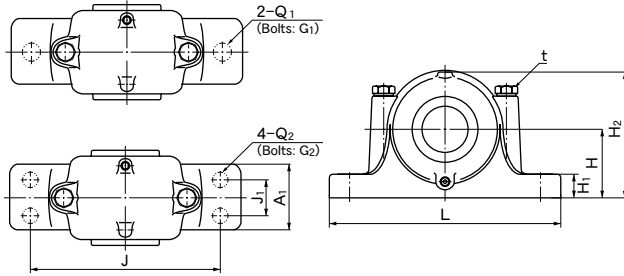
- Remarks (1): Plummer block housings are housings with oil seals, a plug and a grease nipple only.
To make a complete unit, please order the corresponding bearing, adapter sleeve and locating rings shown in the table additionally.
(2): The masses in the table do not include the bearing, adapter sleeve and locating rings but the bolts.
(3): H8, H13 and h13 in the table means tolerance classes specified in JIS B 0401.
(4): The tolerance of locating ring O.D. is h12, and 0 ~ -0.2 for the width.

- (5): When one locating ring is used for fixed-end, the offset (X dimension) of bearing center from the center of the plummer block housing is a half of the locating ring width.
(6): The threads for plugs are PT1/8. SN505 does not have a drain hole.
(7): ZF type oil seals are also available instead of GS type seals.
(8): Please specify number of bolt holes.
(9): The dimension Y indicates the distance from the bearing center to the outer side face of the nut.

Plummer Block Housings

Flat Bottom Type SN5F, SN6F Series
for Bearing with Adapter Sleeve

Shaft Diameter : 65 ~ 100mm



1N=0.102kgf

| Shaft dia. d _a (mm) | Dimensions (mm) | | | | | | | | Bolt holes (Reference) | | | | | t (Nominal) (Reference) | Mass (kg) (Reference) | Designations | | Applicable parts | | | | | | | |
|--------------------------------------|------------------------|------------|-----|-----|----------------|----------------|----------------|-------------------------|------------------------|----------------|-----------------------------|----------------|----------------|-------------------------------|-----------------------------|-----------------------------|--------------------|------------------|-----------------------------|---------------------------|-----------------|----------|----------------------------------|-------------|------------------|
| | D _a (H8) | H (h13) | A | L | A ₁ | H ₁ | H ₂ | C _a (H13) | J | Q ₁ | G ₁ (Nominal) | J ₁ | Q ₂ | | | G ₂ (Nominal) | Through Shaft Type | Shaft End Type | Self-aligning ball bearings | Spherical roller bearings | Adapter sleeve | Oil seal | Locating ring | | Y (Reference) |
| | | | | | | | | | | | | | | | | | Designation | Q'ty | | | | | | | |
| 65 | 130 | 80 | 115 | 280 | 80 | 30 | 155 | 41 | 230 | 19 | M16 | 40 | 15 | M12 | M12 | 8.8 | SN515F | SN515FE | 1215K 2215K | — 22215EXK | H215X H315X | GS15 | SR130×8 SR130×10 | 2 1 | 30 33 |
| | 160 | 100 | 140 | 345 | 100 | 35 | 195 | 65 | 290 | 24 | M20 | 50 | 19 | M16 | M16 | 16 | SN615F | SN615FE | 1315K 2315K | 22315EXK | H315X H2315X | GS15 | SR160×14 SR160×10 | 2 1 | 36 45 |
| 70 | 140 | 95 | 120 | 315 | 90 | 32 | 175 | 43 | 260 | 24 | M20 | 50 | 19 | M16 | M16 | 13 | SN516F | SN516FE | 1216K 2216K | — 22216EXK | H216X H316X | GS16 | SR140×8.5 SR140×10 | 2 1 | 32 36 |
| | 170 | 112 | 145 | 345 | 100 | 35 | 212 | 68 | 290 | 24 | M20 | 50 | 19 | M16 | M16 | 17 | SN616F | SN616FE | 1316K 2316K | 21316EK 22316EXK | H316X H2316X | GS16 | SR170×14.5 SR170×10 | 2 1 | 39 48 |
| 75 | 150 | 95 | 125 | 320 | 90 | 32 | 185 | 46 | 260 | 24 | M20 | 50 | 19 | M16 | M16 | 14 | SN517F | SN517FE | 1217K 2217K | — 22217EXK | H217X H317X | GS17 | SR150×9 SR150×10 | 2 1 | 34 38 |
| | 180 | 112 | 155 | 380 | 110 | 40 | 223 | 70 | 320 | 28 | M24 | 60 | 24 | M20 | M20 | 24 | SN617F | SN617FE | 1317K 2317K | 21317EK 22317EXK | H317X H2317X | GS17 | SR180×14.5 SR180×10 | 2 1 | 41 50 |
| 80 | 160 | 100 | 145 | 345 | 100 | 35 | 195 | 62.4 | 290 | 24 | M20 | 50 | 19 | M16 | M16 | 18 | SN518F | SN518FE | 1218K 2218K | — 22218EXK | H218X H318X | GS18 | SR160×16.2 SR160×11.2 | 2 2 | 35 40 |
| | 190 | 112 | 160 | 380 | 110 | 40 | 230 | 74 | 320 | 28 | M24 | 60 | 24 | M20 | M20 | 26 | SN618F | SN618FE | 1318K 2318K | 21318EK 22318EXK | H318X H2318X | GS18 | SR190×15.5 SR190×10 | 2 1 | 42 52 |
| 85 | 170 | 112 | 140 | 345 | 100 | 35 | 210 | 53 | 290 | 24 | M20 | 50 | 19 | M16 | M16 | 20 | SN519F | SN519FE | 1219K 2219K | — 22219EXK | H219X H319X | GS19 | SR170×10.5 SR170×10 | 2 1 | 37 43 |
| | 200 | 125 | 170 | 410 | 120 | 45 | 250 | 77 | 350 | 28 | M24 | 70 | 24 | M20 | M20 | 30 | SN619F | SN619FE | 1319K 2319K | 21319EK 22319EXK | H319X H2319X | GS19 | SR200×16 SR200×10 | 2 1 | 44 55 |
| 90 | 180 | 112 | 160 | 380 | 110 | 40 | 218 | 70.3 | 320 | 28 | M24 | 60 | 24 | M20 | M20 | 26 | SN520F | SN520FE | 1220K 2220K | — 22220EXK | H220X H320X | GS20 | SR180×18.1 SR180×12.1 | 2 2 | 39 45 |
| | 215 | 140 | 175 | 410 | 120 | 45 | 270 | 83 | 350 | 28 | M24 | 70 | 24 | M20 | M20 | 35 | SN620F | SN620FE | 1320K 2320K | 21320EK 22320EXK | H320X H2320X | GS20 | SR180×10 SR215×18 SR215×10 | 1 2 1 | 52 46 59 |
| 100 | 200 | 125 | 175 | 410 | 120 | 45 | 240 | 80 | 350 | 28 | M24 | 70 | 24 | M20 | M20 | 28 | SN522F | SN522FE | 1222K 2222K | — 22222EXK | H222X H322X | GS22 | SR200×21 SR200×13.5 | 2 2 | 42 50 |
| | 240 | 150 | 190 | 450 | 130 | 50 | 300 | 90 | 390 | 28 | M24 | 70 | 28 | M24 | M24 | 45 | SN622F | SN622FE | 1322K 2322K | 21322EK 22322EXK | H322X H2322X | GS22 | SR200×10 SR240×20 SR240×10 | 1 2 1 | 58 48 63 |

Remarks (1): Plummer block housings are housings with oil seals, a plug and a grease nipple only.

To make a complete unit, please order the corresponding bearing, adapter sleeve and locating rings shown in the table additionally.

(2): The masses in the table do not include the bearing, adapter sleeve and locating rings but the bolts.

(3): H8, H13 and h13 in the table means tolerance classes specified in JIS B 0401.

(4): The tolerance of locating ring O.D. is h12, and 0 ~ -0.2 for the width.

(5): Plummer block housings SN3028, SN3126, SN524, SN620 and larger are provided with eye bolts.

(6): When one locating ring is used for fixed-end, the offset (X dimension) of bearing center from the center of the plummer block housing is a half of the locating ring width.

(7): The threads for plugs are PT1/8 for SN519, SN616 and smaller, and PT1/4 for the others.

(8): ZF type oil seals are also available instead of GS type seals.

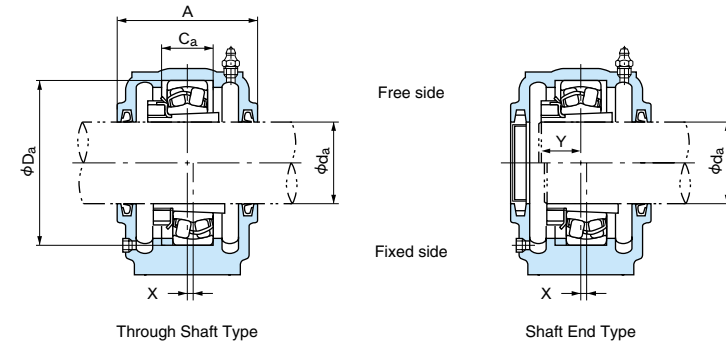
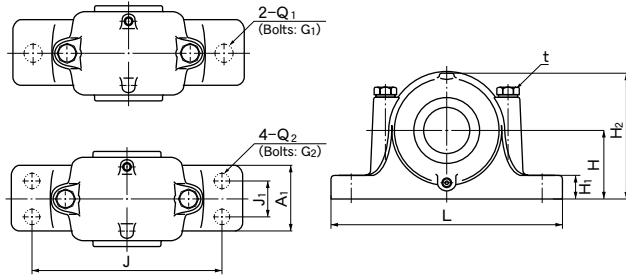
(9): Please specify number of bolt holes.

(10): The dimension Y indicates the distance from the bearing center to the outer side face of the nut.

Plummer Block Housings

Flat Bottom Type SN5F, SN6F Series
for Bearing with Adapter Sleeve

Shaft Diameter : 110 ~ 140mm



1N=0.102kgf

| Shaft dia. d _a (mm) | Dimensions (mm) | | | | | | | | Bolt holes (Reference) | | | | | t (Nominal) (Reference) | Mass (kg) (Reference) | Designations | | Applicable parts | | | | | Y (Reference) | |
|--------------------------------------|------------------------|------------|-----|-----|----------------|----------------|----------------|-------------------------|------------------------|----------------|-----------------------------|----------------|----------------|-------------------------------|-----------------------------|-----------------------------|--------------------|------------------|---------------------------|------------------|----------|------------------------|------------------|----------|
| | D _a (H8) | H (h13) | A | L | A ₁ | H ₁ | H ₂ | C _a (H13) | J | Q ₁ | G ₁ (Nominal) | J ₁ | Q ₂ | | | G ₂ (Nominal) | Through Shaft Type | Shaft End Type | Spherical roller bearings | Adapter sleeve | Oil seal | Locating ring | | |
| | | | | | | | | | | | | | | | | | | | | Designation | Q'ty | | | |
| 110 | 215 | 140 | 185 | 410 | 120 | 45 | 270 | 86 | 350 | 28 | M24 | 70 | 24 | M20 | M20 | 35 | SN524F | SN524FE | 22224EXK 23224EK | H3124X H2324X | GS24 | SR215×14 SR215×10 | 2 1 | 53 62 |
| | 260 | 160 | 200 | 530 | 160 | 60 | 320 | 96 | 450 | 35 | M30 | 90 | 28 | M24 | M24 | 63 | SN624F | SN624FE | 22324EK | H2324X | GS24 | SR260×10 | 1 | 67 |
| 115 | 230 | 150 | 190 | 445 | 130 | 50 | 290 | 90 | 380 | 28 | M24 | 70 | 28 | M24 | M24 | 42 | SN526F | SN526FE | 22226EXK 23226EK | H3126 H2326 | GS26 | SR230×13 SR230×10 | 2 1 | 57 65 |
| | 280 | 170 | 210 | 550 | 160 | 60 | 340 | 103 | 470 | 35 | M30 | 90 | 28 | M24 | M24 | 74 | SN626F | SN626FE | 22326EK | H2326 | GS26 | SR280×10 | 1 | 72 |
| 125 | 250 | 150 | 205 | 500 | 150 | 50 | 305 | 98 | 420 | 35 | M30 | 80 | 28 | M24 | M24 | 52 | SN528F | SN528FE | 22228EXK 23228EK | H3128 H2328 | GS28 | SR250×15 SR250×10 | 2 1 | 60 70 |
| | 300 | 180 | 235 | 610 | 170 | 65 | 365 | 112 | 520 | 35 | M30 | 100 | 28 | M24 | M30 | 92 | SN628F | SN628FE | 22328EK | H2328 | GS28 | SR300×10 | 1 | 77 |
| 135 | 270 | 160 | 220 | 530 | 160 | 60 | 325 | 106 | 450 | 35 | M30 | 90 | 28 | M24 | M24 | 61 | SN530F | SN530FE | 22230EK 23230EK | H3130 H2330 | GS30 | SR270×16.5 SR270×10 | 2 1 | 65 76 |
| | 320 | 190 | 245 | 650 | 180 | 65 | 385 | 118 | 560 | 35 | M30 | 110 | 28 | M24 | M30 | 120 | SN630F | SN630FE | 22330EK | H2330 | GS30 | SR320×10 | 1 | 82 |
| 140 | 290 | 170 | 235 | 550 | 160 | 60 | 345 | 114 | 470 | 35 | M30 | 90 | 28 | M24 | M24 | 68 | SN532F | SN532FE | 22232EK 23232EK | H3132 H2332 | GS32 | SR290×17 SR290×10 | 2 1 | 71 83 |
| | 340 | 200 | 255 | 680 | 190 | 70 | 405 | 124 | 580 | 42 | M36 | 110 | 35 | M30 | M30 | 140 | SN632F | SN632FE | 22332EK | H2332 | GS32 | SR340×10 | 1 | 88 |

- Remarks (1): Plummer block housings are housings with oil seals, a plug and a grease nipple only.
To make a complete unit, please order the corresponding bearing, adapter sleeve and locating rings shown in the table additionally.
- (2): The masses in the table do not include the bearing, adapter sleeve and locating rings but the bolts.
- (3): H8, H13 and h13 in the table means tolerance classes specified in JIS B 0401.
- (4): The tolerance of locating ring O.D. is h12, and 0 ~ -0.2 for the width.
- (5): Plummer block housings SN3028, SN3126, SN524, SN620 and larger are provided with eye bolts.
- (6): When one locating ring is used for fixed-end, the offset (X dimension) of bearing center from the center of the plummer block housing is a half of the locating ring width.
- (7): The threads for plugs are PT1/4.
- (8): ZF type oil seals are also available instead of GS type seals.
- (9): Please specify number of bolt holes.
- (10): The dimension Y indicates the distance from the bearing center to the outer side face of the nut.