

**NTN**<sup>®</sup>

# Sentinel™ Series



Stainless Units



Thermoplastic Units

CAT. No. 21NTNSSMC1



Nonfood Compounds  
(Category Code H1)



# What is Sentinel Series?

NTN's Sentinel Series is a premium line of corrosion-resistant products developed for the harsh conditions of the food & beverage industry. With available products ranging from deep groove ball bearings, bearing inserts and mounted units available in numerous combinations of housings, protective covers, grease and sealing options, Sentinel Series provides a family of food & beverage market solutions to improve overall equipment effectiveness, increase production and provide value.

## Key product characteristics

- Sentinel Series mounted bearing units are available in either solid-base reinforced thermoplastic or solid stainless-steel housing designs.
- Sentinel Series mounted bearing units are cap capable allowing you to add or remove covers depending on your application needs.
- Sentinel Series insert bearings are filled with FDA H1 food grade grease or NTN's H1 solid polymer lubricant.
- Sentinel Series is designed with food safety and overall equipment effectiveness in mind.

## Materials

### Inner/Outer Races & Balls

- 440C Stainless Steel

### Retainer/Cage

- 302 Stainless Steel

### Slinger and Seal

- 302 Stainless Steel
- Silicone Rubber

### Stainless Housing & Cover

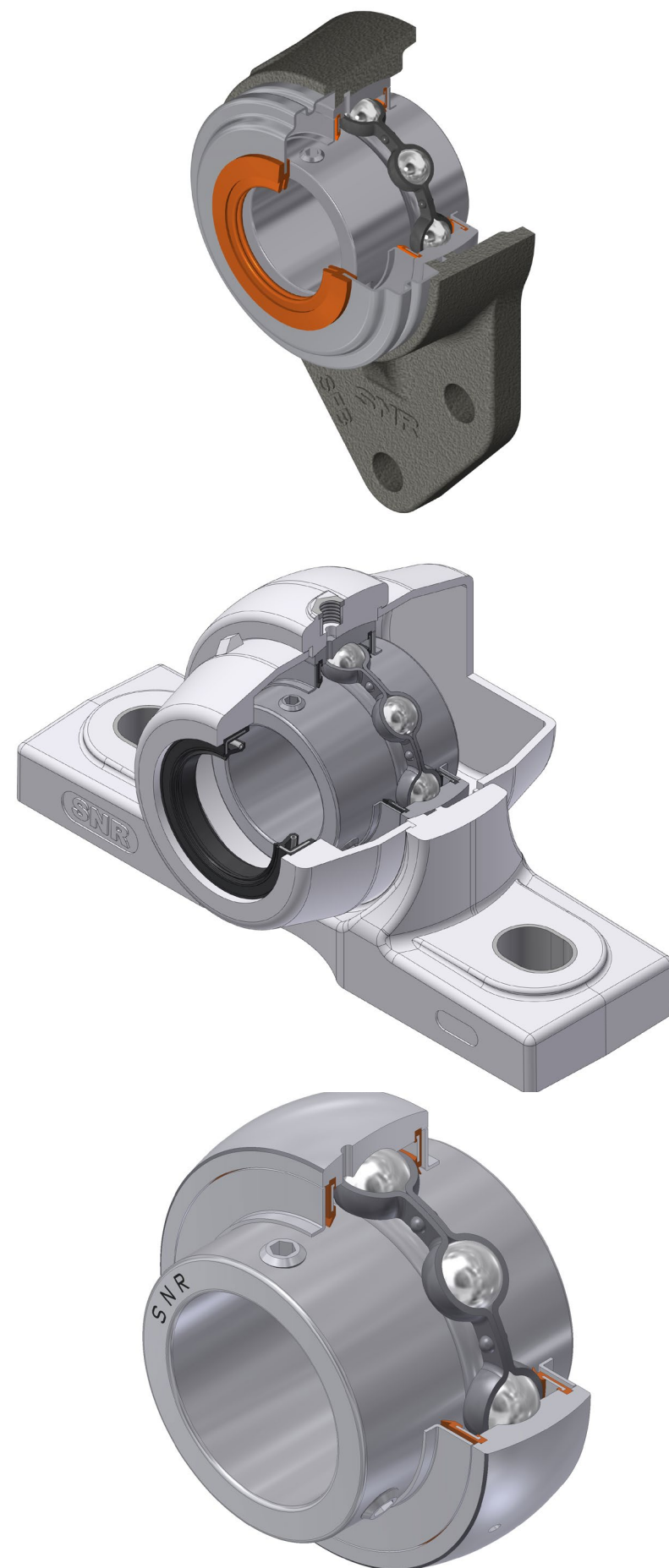
- 304 Stainless Steel

### Thermoplastic Housing & Cover

- PBT - Thermoplastic

### Greases

- H-1 Food-Grade Grease
- H-1 Solid Lubricant (FG1)





# Table of Contents

## NOMENCLATURE SYSTEM

BALL BEARING UNITS ..... 6

BALL BEARINGS ..... 7

## STAINLESS STEEL HOUSINGS

PILLOW BLOCK ..... 8-9

TAPPED BASE PILLOW BLOCK ..... 10-11

FOUR-BOLT FLANGE ..... 12-13

TWO-BOLT FLANGE ..... 14-15

THREE-BOLT FLANGE ..... 16-17

TAKE-UP ..... 18-19

## THERMOPLASTIC HOUSINGS

PILLOW BLOCK ..... 20-21

TAPPED BASE PILLOW BLOCK ..... 22-23

FOUR-BOLT FLANGE ..... 24-25

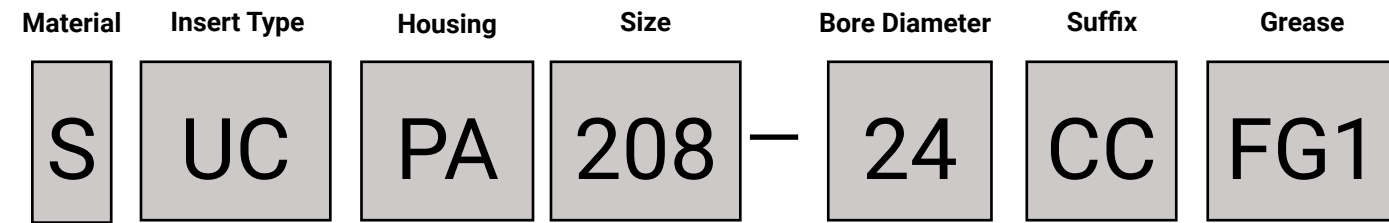
TWO-BOLT FLANGE ..... 26-27

THREE-BOLT FLANGE ..... 28-29



# Sentinel Series Nomenclature System

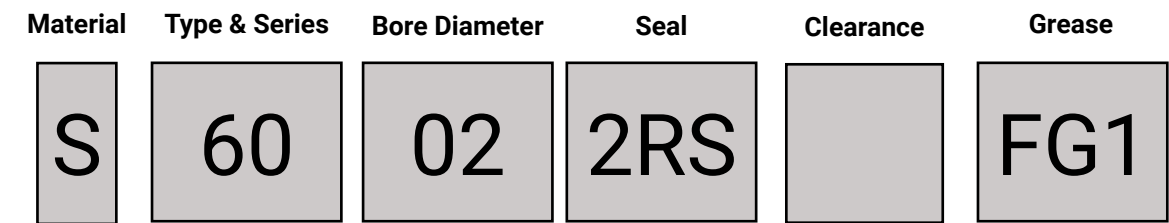
## Ball Bearing Units



- MATERIAL**  
S: Stainless steel  
Z: Clear zinc chromate
- INSERT TYPE**  
UC: Wide inner ring, set screw type w/slinger
- HOUSING**  
Stainless Steel  
P: Pillow block  
PA: Tapped-base pillow block  
FL: Two-bolt flange  
FB: Three-bolt bracket flange  
F: Four-bolt flange  
T: Take up unit  
  
Thermoplastic  
PPL: Pillow block  
TBL: Tapped-base pillow block  
NFL: Two-bolt flange  
FBL: Three-bolt flange bracket  
FPL: Four-bolt flange
- SIZE**  
2xx: Basic size
- BORE DIAMETER**  
XX: Bore diameter in 16ths of an inch (ex: 24/16 = 1.5")
- SUFFIX**  
CC: Closed cover †  
CO: Open cover †  
Blank: No cover  
† - 1 additional open cover included for pillow blocks
- GREASE**  
Blank: Food-grade grease  
FG1: Food-grade solid lube

# Sentinel Series Nomenclature System

## Ball Bearings



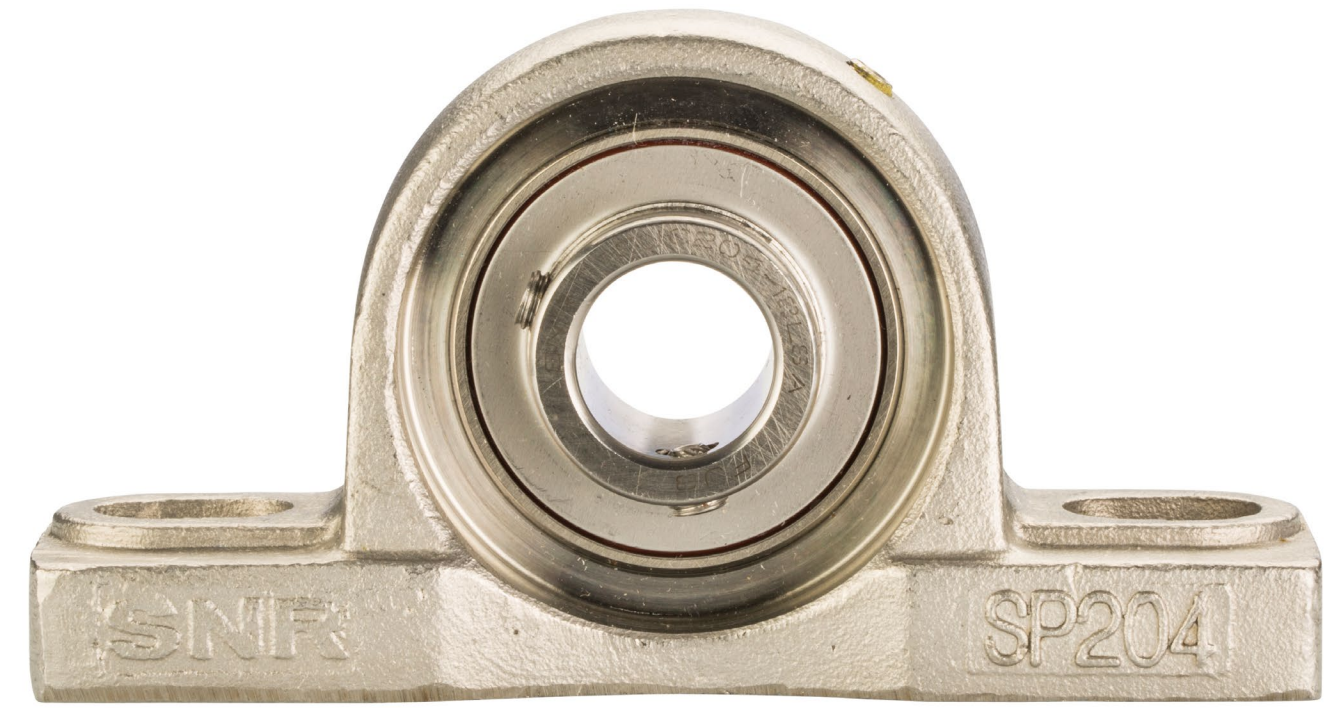
- MATERIAL**  
S: Stainless steel
- TYPE & SERIES**  
60: ISO 10 series deep groove ball bearing  
62: ISO 02 series deep groove ball bearing
- BORE DIAMETER**  
00: 10mm  
01: 12mm  
02: 15mm  
03: 17mm  
04+: # x 5 = bore diameter in mm
- SEALS**  
2RS: Contact seal with grooves
- CLEARANCE**  
No Designation: Normal clearance
- GREASE**  
No Designation: Standard food-grade grease (Kluber Paraliq GA 343 NSF H1)  
FG1: Food-grade solid lube (NSF H1 registered)



# SUCP - Stainless Steel Pillow Block



Base Industry Part Number and Bore	
Bore	Base IPN
1/2	SUCP201-08
5/8	SUCP202-10
17MM	SUCP203
20MM	SUCP204
3/4	SUCP204-12
25mm	SUCP205
1"	SUCP205-16
30MM	SUCP206
1-1/8	SUCP206-18
1-3/16	SUCP206-19
1-1/4	SUCP206-20
35MM	SUCP207
1-1/4	SUCP207-20
1-3/8	SUCP207-22
1-7/16	SUCP207-23
40MM	SUCP208
1-1/2	SUCP208-24
45MM	SUCP209
1-3/4	SUCP209-28
50MM	SUCP210
1-15/16	SUCP210-31
2	SUCP210-32
55MM	SUCP211
2	SUCP211-32
2-3/16	SUCP211-35
60MM	SUCP212
2-7/16	SUCP212-39



Series Interchanges				
DODGE	Regal	IPTCI	AMI	SKF/MRC
P2B-SCEZ-100-SHCR	SPS-S216	SUCSP205-16	MUCP205-16	SPB100SS

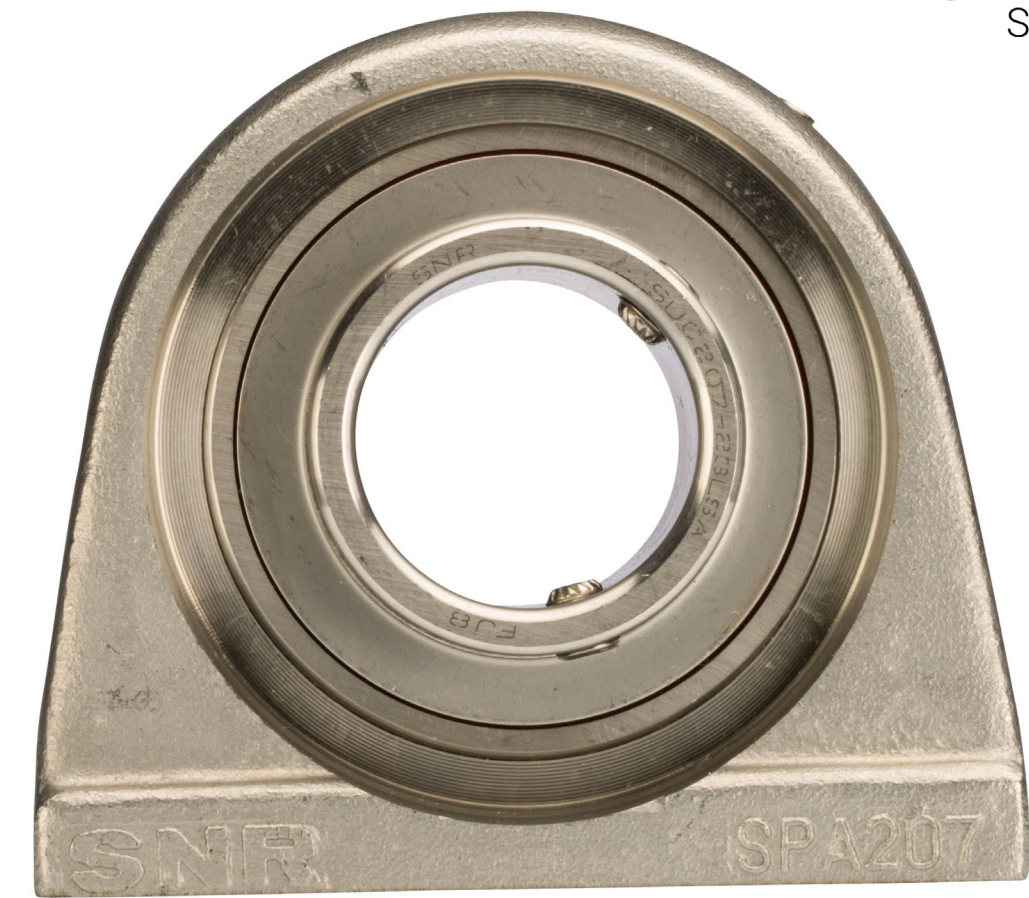
Base Industry Part Number Variations and Features											
IPN	Bearing Type	Bore	Insert Material	Housing Material	H1 Grease Type		IPN	Cap Capable (Y/N)	End Caps (Y/N)	# of End Caps	End Caps Description
SUCP205-16	Pillow Block Unit	1"	Stainless	Stainless	H1 Grease		SUCP205-16	Yes	N/A	N/A	N/A
SUCP205-16CC	Pillow Block Unit	1"	Stainless	Stainless	H1 Grease		SUCP205-16CC	Yes	Yes	2	1 open & 1 closed
SUCP205-16C0	Pillow Block Unit	1"	Stainless	Stainless	H1 Grease		SUCP205-16C0	Yes	Yes	2	2 open
SUCP205-16FG1	Pillow Block Unit	1"	Stainless	Stainless	H1 Solid Lube		SUCP205-16FG1	Yes	N/A	N/A	N/A
SUCP205-16CCFG1	Pillow Block Unit	1"	Stainless	Stainless	H1 Solid Lube		SUCP205-16CCFG1	Yes	Yes	2	1 open & 1 closed
SUCP205-16C0FG1	Pillow Block Unit	1"	Stainless	Stainless	H1 Solid Lube		SUCP205-16C0FG1	Yes	Yes	2	2 open



# SUCPA - Stainless Steel Tapped Base Pillow Block



Base Industry Part Number and Bore	
Bore	Base IPN
1/2	SUCPA201-08
5/8	SUCPA202-10
17MM	SUCPA203
20MM	SUCPA204
3/4	SUCPA204-12
25mm	SUCPA205
1"	SUCPA205-16
30MM	SUCPA206
1-1/8	SUCPA206-18
1-3/16	SUCPA206-19
1-1/4	SUCPA206-20
35MM	SUCPA207
1-1/4	SUCPA207-20
1-3/8	SUCPA207-22
1-7/16	SUCPA207-23
40MM	SUCPA208
1-1/2	SUCPA208-24
45MM	SUCPA209
1-3/4	SUCPA209-28
50MM	SUCPA210
1-15/16	SUCPA210-31
2	SUCPA210-32



Series Interchanges				
DODGE	Regal	IPTCI	AMI	SKF/MRC
TB-SCEZ-100-SHCR	STBS-S216	SUCSPA205-16	MUCTB205-16	STB100SS

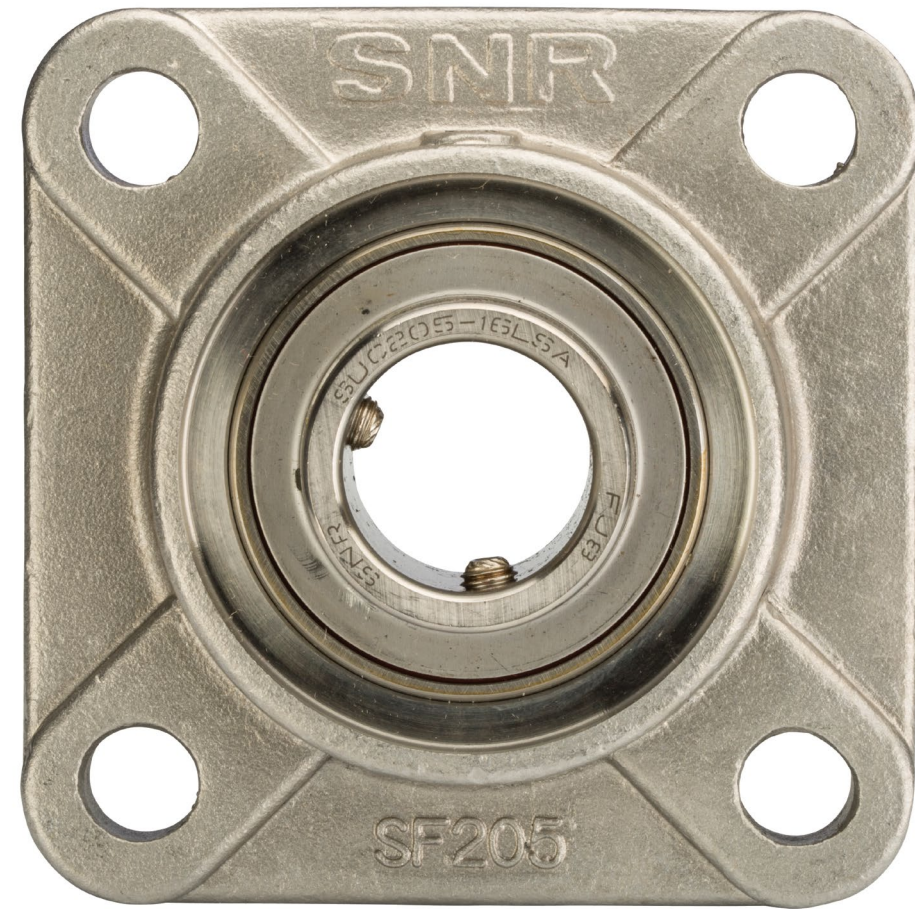
Base Industry Part Number Variations and Features											
IPN	Bearing Type	Bore	Insert Material	Housing Material		IPN	H1 Grease Type	Cap Capable (Y/N)	End Caps (Y/N)	# of End Caps	End Caps Description
SUCPA205-16	Tapped Base Pillow Block Unit	1"	Stainless	Stainless		SUCPA205-16	H1 Grease	Yes	N/A	N/A	N/A
SUCPA205-16CC	Tapped Base Pillow Block Unit	1"	Stainless	Stainless		SUCPA205-16CC	H1 Grease	Yes	Yes	2	1 open & 1 closed
SUCPA205-16C0	Tapped Base Pillow Block Unit	1"	Stainless	Stainless		SUCPA205-16C0	H1 Grease	Yes	Yes	2	2 open
SUCPA205-16FG1	Tapped Base Pillow Block Unit	1"	Stainless	Stainless		SUCPA205-16FG1	H1 Solid Lube	Yes	N/A	N/A	N/A
SUCPA205-16CCFG1	Tapped Base Pillow Block Unit	1"	Stainless	Stainless		SUCPA205-16CCFG1	H1 Solid Lube	Yes	Yes	2	1 open & 1 closed
SUCPA205-16C0FG1	Tapped Base Pillow Block Unit	1"	Stainless	Stainless		SUCPA205-16C0FG1	H1 Solid Lube	Yes	Yes	2	2 open



# SUCF - Stainless Steel Four-Bolt Flange



Base Industry Part Number and Bore	
Bore	Base IPN
1/2	SUCF201-08
5/8	SUCF202-10
17MM	SUCF203
20MM	SUCF204
3/4	SUCF204-12
25mm	SUCF205
1"	SUCF205-16
30MM	SUCF206
1-1/8	SUCF206-18
1-3/16	SUCF206-19
1-1/4	SUCF206-20
35MM	SUCF207
1-1/4	SUCF207-20
1-3/8	SUCF207-22
1-7/16	SUCF207-23
40MM	SUCF208
1-1/2	SUCF208-24
45MM	SUCF209
1-3/4	SUCF209-28
50MM	SUCF210
1-15/16	SUCF210-31
2	SUCF210-32
55MM	SUCF211
2	SUCF211-32
2-3/16	SUCF211-35
60MM	SUCF212
2-7/16	SUCF212-39



Series Interchanges				
DODGE	Regal	IPTCI	AMI	SKF/MRC
F4B-SCEZ-100-SHCR	SF4S-S216	SUCSF205-16	MUCF205-16	S24F100SS

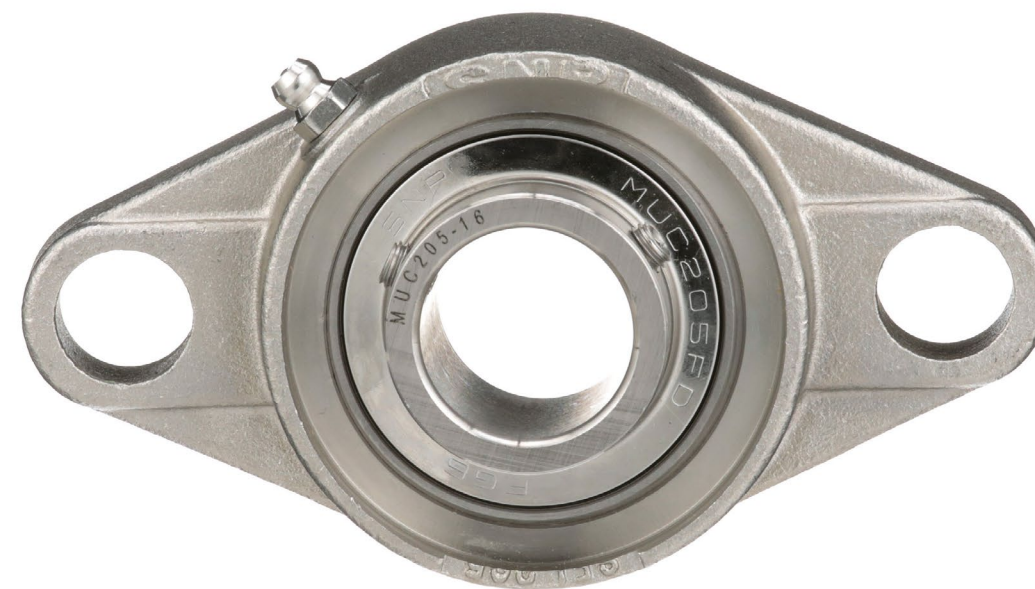
Base Industry Part Number Variations and Features											
IPN	Bearing Type	Bore	Insert Material	Housing Material	H1 Grease Type		IPN	Cap Capable (Y/N)	End Caps (Y/N)	# of End Caps	End Caps Description
SUCF205-16	4-Bolt Flange Unit	1"	Stainless	Stainless	H1 Grease		SUCF205-16	Yes	N/A	N/A	N/A
SUCF205-16CC	4-Bolt Flange Unit	1"	Stainless	Stainless	H1 Grease		SUCF205-16CC	Yes	Yes	1	1 closed
SUCF205-16C0	4-Bolt Flange Unit	1"	Stainless	Stainless	H1 Grease		SUCF205-16C0	Yes	Yes	1	1 open
SUCF205-16FG1	4-Bolt Flange Unit	1"	Stainless	Stainless	H1 Solid Lube		SUCF205-16FG1	Yes	N/A	N/A	N/A
SUCF205-16CCFG1	4-Bolt Flange Unit	1"	Stainless	Stainless	H1 Solid Lube		SUCF205-16CCFG1	Yes	Yes	1	1 closed
SUCF205-16C0FG1	4-Bolt Flange Unit	1"	Stainless	Stainless	H1 Solid Lube		SUCF205-16C0FG1	Yes	Yes	1	1 open



# SUCFL - Stainless Steel Two-Bolt Flange



Base Industry Part Number and Bore	
Bore	Base IPN
1/2	SUCFL201-08
5/8	SUCFL202-10
17MM	SUCFL203
20MM	SUCFL204
3/4	SUCFL204-12
25mm	SUCFL205
1"	SUCFL205-16
30MM	SUCFL206
1-1/8	SUCFL206-18
1-3/16	SUCFL206-19
1-1/4	SUCFL206-20
35MM	SUCFL207
1-1/4	SUCFL207-20
1-3/8	SUCFL207-22
1-7/16	SUCFL207-23
40MM	SUCFL208
1-1/2	SUCFL208-24
45MM	SUCFL209
1-3/4	SUCFL209-28
50MM	SUCFL210
1-15/16	SUCFL210-31
2	SUCFL210-32



Series Interchanges				
DODGE	Regal	IPTCI	AMI	SKF/MRC
F2B-SCEZ-100-SHCR	SF2S-S216	SUCSFL205-16	MUCFT205-16	S2F100SS

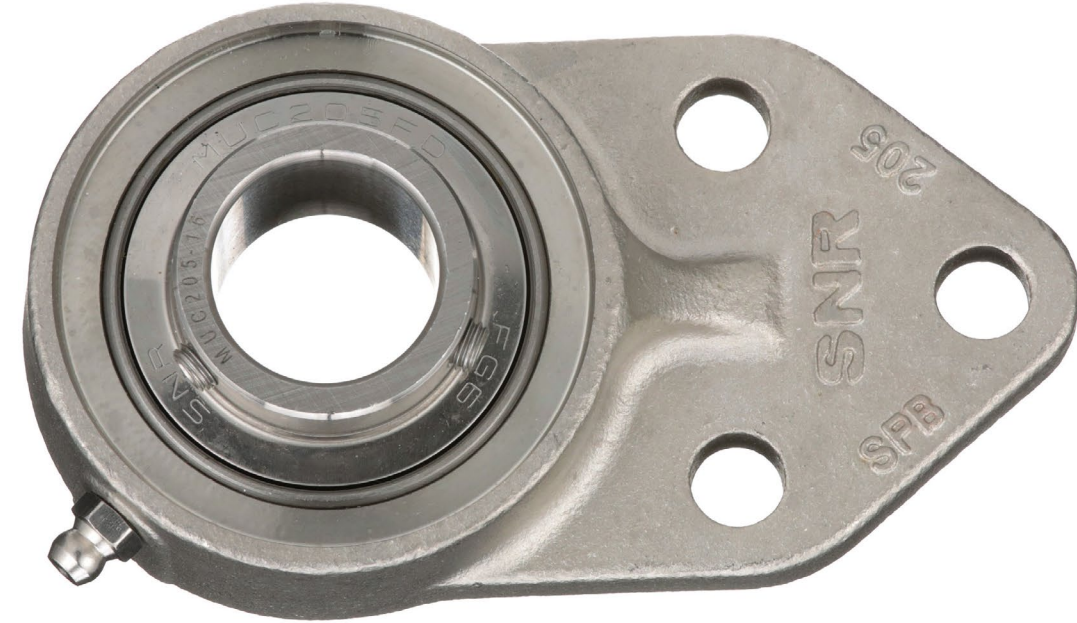
Base Industry Part Number Variations and Features											
IPN	Bearing Type	Bore	Insert Material	Housing Material	H1 Grease Type		IPN	Cap Capable (Y/N)	End Caps (Y/N)	# of End Caps	End Caps Description
SUCFL205-16	2-Bolt Flange Unit	1"	Stainless	Stainless	H1 Grease		SUCFL205-16	Yes	N/A	N/A	N/A
SUCFL205-16CC	2-Bolt Flange Unit	1"	Stainless	Stainless	H1 Grease		SUCFL205-16CC	Yes	Yes	1	1 closed
SUCFL205-16C0	2-Bolt Flange Unit	1"	Stainless	Stainless	H1 Grease		SUCFL205-16C0	Yes	Yes	1	1 open
SUCFL205-16FG1	2-Bolt Flange Unit	1"	Stainless	Stainless	H1 Solid Lube		SUCFL205-16FG1	Yes	N/A	N/A	N/A
SUCFL205-16CCFG1	2-Bolt Flange Unit	1"	Stainless	Stainless	H1 Solid Lube		SUCFL205-16CCFG1	Yes	Yes	1	1 closed
SUCFL205-16C0FG1	2-Bolt Flange Unit	1"	Stainless	Stainless	H1 Solid Lube		SUCFL205-16C0FG1	Yes	Yes	1	1 open



# SUCFB - Stainless Steel Three-Bolt Flange



Base Industry Part Number and Bore	
Bore	Base IPN
1/2	SUCFB201-08
5/8	SUCFB202-10
17MM	SUCFB203
20MM	SUCFB204
3/4	SUCFB204-12
25mm	SUCFB205
1"	SUCFB205-16
30MM	SUCFB206
1-1/8	SUCFB206-18
1-3/16	SUCFB206-19
1-1/4	SUCFB206-20
35MM	SUCFB207
1-1/4	SUCFB207-20
1-3/8	SUCFB207-22
1-7/16	SUCFB207-23
40MM	SUCFB208
1-1/2	SUCFB208-24
45MM	SUCFB209
1-3/4	SUCFB209-28
50MM	SUCFB210
1-15/16	SUCFB210-31
2	SUCFB210-32



Series Interchanges		
DODGE	IPTCI	AMI
FB-SCEZ-100-SHCR	SUCSFB205-16	MUCFB205-16

Base Industry Part Number Variations and Features											
IPN	Bearing Type	Bore	Insert Material	Housing Material	H1 Grease Type		IPN	Cap Capable (Y/N)	End Caps (Y/N)	# of End Caps	End Caps Description
SUCFB205-16	3-Bolt Flange Unit	1"	Stainless	Stainless	H1 Grease		SUCFB205-16	Yes	N/A	N/A	N/A
SUCFB205-16CC	3-Bolt Flange Unit	1"	Stainless	Stainless	H1 Grease		SUCFB205-16CC	Yes	Yes	1	1 closed
SUCFB205-16C0	3-Bolt Flange Unit	1"	Stainless	Stainless	H1 Grease		SUCFB205-16C0	Yes	Yes	1	1 open
SUCFB205-16FG1	3-Bolt Flange Unit	1"	Stainless	Stainless	H1 Solid Lube		SUCFB205-16FG1	Yes	N/A	N/A	N/A
SUCFB205-16CCFG1	3-Bolt Flange Unit	1"	Stainless	Stainless	H1 Solid Lube		SUCFB205-16CCFG1	Yes	Yes	1	1 closed
SUCFB205-16C0FG1	3-Bolt Flange Unit	1"	Stainless	Stainless	H1 Solid Lube		SUCFB205-16C0FG1	Yes	Yes	1	1 open



# SUCT - Stainless Steel Take Up Unit



Base Industry Part Number and Bore	
Bore	Base IPN
1/2	SUCT201-08
5/8	SUCT202-10
17MM	SUCT203
20MM	SUCT204
3/4	SUCT204-12
25mm	SUCT205
1"	SUCT205-16
30MM	SUCT206
1-1/8	SUCT206-18
1-3/16	SUCT206-19
1-1/4	SUCT206-20
35MM	SUCT207
1-1/4	SUCT207-20
1-3/8	SUCT207-22
1-7/16	SUCT207-23
40MM	SUCT208
1-1/2	SUCT208-24
45MM	SUCT209
1-3/4	SUCT209-28
50MM	SUCT210
1-15/16	SUCT210-31
2	SUCT210-32



Series Interchanges			
DODGE	IPTCI	AMI	SKF/MRC
WSTU-SCEZ-100-SHCR	SUCST205-16	MUCST205-16	CTW100SS

Base Industry Part Number Variations and Features											
IPN	Bearing Type	Bore	Insert Material	Housing Material	H1 Grease Type		IPN	Cap Capable (Y/N)	End Caps (Y/N)	# of End Caps	End Caps Description
SUCT205-16	Take-Up Unit	1"	Stainless	Stainless	H1 Grease		SUCT205-16	Yes	N/A	N/A	N/A
SUCT205-16CC	Take-Up Unit	1"	Stainless	Stainless	H1 Grease		SUCT205-16CC	Yes	Yes	2	1 open & 1 closed
SUCT205-16C0	Take-Up Unit	1"	Stainless	Stainless	H1 Grease		SUCT205-16C0	Yes	Yes	2	2 open
SUCT205-16FG1	Take-Up Unit	1"	Stainless	Stainless	H1 Solid Lube		SUCT205-16FG1	Yes	N/A	N/A	N/A
SUCT205-16CCFG1	Take-Up Unit	1"	Stainless	Stainless	H1 Solid Lube		SUCT205-16CCFG1	Yes	Yes	2	1 open & 1 closed
SUCT205-16C0FG1	Take-Up Unit	1"	Stainless	Stainless	H1 Solid Lube		SUCT205-16C0FG1	Yes	Yes	2	2 open



# SUCPPL - Thermoplastic Pillow Block



Base Industry Part Number and Bore	
Bore	Base IPN
1/2	SUCPPL201-08
5/8	SUCPPL202-10
17MM	SUCPPL203
20MM	SUCPPL204
3/4	SUCPPL204-12
25mm	SUCPPL205
1"	SUCPPL205-16
30MM	SUCPPL206
1-1/8	SUCPPL206-18
1-3/16	SUCPPL206-19
1-1/4	SUCPPL206-20
35MM	SUCPPL207
1-1/4	SUCPPL207-20
1-3/8	SUCPPL207-22
1-7/16	SUCPPL207-23
40MM	SUCPPL208
1-1/2	SUCPPL208-24



Series Interchanges				
DODGE	Regal	IPTCI	AMI	SKF/MRC
P2B-SCEZ-100-PCR	CPS-S216	SUCTP205-16	MUCPPL205-16	CPB100SSG

Base Industry Part Number Variations and Features											
IPN	Bearing Type	Bore	Insert Material	Housing Material	H1 Grease Type		IPN	Cap Capable (Y/N)	End Caps (Y/N)	# of End Caps	End Caps Description
SUCPPL205-16	Pillow Block Unit	1"	Stainless	Thermoplastic	H1 Grease		SUCPPL205-16	Yes	N/A	N/A	N/A
SUCPPL205-16CC	Pillow Block Unit	1"	Stainless	Thermoplastic	H1 Grease		SUCPPL205-16CC	Yes	Yes	2	1 open & 1 closed
SUCPPL205-16C0	Pillow Block Unit	1"	Stainless	Thermoplastic	H1 Grease		SUCPPL205-16C0	Yes	Yes	2	2 open
SUCPPL205-16FG1	Pillow Block Unit	1"	Stainless	Thermoplastic	H1 Solid Lube		SUCPPL205-16FG1	Yes	N/A	N/A	N/A
SUCPPL205-16CCFG1	Pillow Block Unit	1"	Stainless	Thermoplastic	H1 Solid Lube		SUCPPL205-16CCFG1	Yes	Yes	2	1 open & 1 closed
SUCPPL205-16C0FG1	Pillow Block Unit	1"	Stainless	Thermoplastic	H1 Solid Lube		SUCPPL205-16C0FG1	Yes	Yes	2	2 open



# SUCTBL - Thermoplastic Tapped Base Pillow Block



Base Industry Part Number and Bore	
Bore	Base IPN
1/2	SUCTBL201-08
5/8	SUCTBL202-10
17MM	SUCTBL203
20MM	SUCTBL204
3/4	SUCTBL204-12
25mm	SUCTBL205
1"	SUCTBL205-16
30MM	SUCTBL206
1-1/8	SUCTBL206-18
1-3/16	SUCTBL206-19
1-1/4	SUCTBL206-20
35MM	SUCTBL207
1-1/4	SUCTBL207-20
1-3/8	SUCTBL207-22
1-7/16	SUCTBL207-23
40MM	SUCTBL208
1-1/2	SUCTBL208-24



Series Interchanges				
DODGE	Regal	IPTCI	AMI	SKF/MRC
TB-SCEZ-100-PCR	CTBS-S216	SUCTPA205-16	MUCTBL205-16	CTB100SSG

Base Industry Part Number Variations and Features											
IPN	Bearing Type	Bore	Insert Material	Housing Material		IPN	H1 Grease Type	Cap Capable (Y/N)	End Caps (Y/N)	# of End Caps	End Caps Description
SUCTBL205-16	Tapped Base Pillow Block Unit	1"	Stainless	Thermoplastic		SUCTBL205-16	H1 Grease	Yes	N/A	N/A	N/A
SUCTBL205-16CC	Tapped Base Pillow Block Unit	1"	Stainless	Thermoplastic		SUCTBL205-16CC	H1 Grease	Yes	Yes	2	1 open & 1 closed
SUCTBL205-16C0	Tapped Base Pillow Block Unit	1"	Stainless	Thermoplastic		SUCTBL205-16C0	H1 Grease	Yes	Yes	2	2 open
SUCTBL205-16FG1	Tapped Base Pillow Block Unit	1"	Stainless	Thermoplastic		SUCTBL205-16FG1	H1 Solid Lube	Yes	N/A	N/A	N/A
SUCTBL205-16CCFG1	Tapped Base Pillow Block Unit	1"	Stainless	Thermoplastic		SUCTBL205-16CCFG1	H1 Solid Lube	Yes	Yes	2	1 open & 1 closed
SUCTBL205-16C0FG1	Tapped Base Pillow Block Unit	1"	Stainless	Thermoplastic		SUCTBL205-16C0FG1	H1 Solid Lube	Yes	Yes	2	2 open



# SUCFPL - Thermoplastic Four-Bolt Flange



Base Industry Part Number and Bore	
Bore	Base IPN
1/2	SUCFPL201-08
5/8	SUCFPL202-10
17MM	SUCFPL203
20MM	SUCFPL204
3/4	SUCFPL204-12
25mm	SUCFPL205
1"	SUCFPL205-16
30MM	SUCFPL206
1-1/8	SUCFPL206-18
1-3/16	SUCFPL206-19
1-1/4	SUCFPL206-20
35MM	SUCFPL207
1-1/4	SUCFPL207-20
1-3/8	SUCFPL207-22
1-7/16	SUCFPL207-23
40MM	SUCFPL208
1-1/2	SUCFPL208-24



Series Interchanges				
DODGE	Regal	IPTCI	AMI	SKF/MRC
F4B-SCEZ-100-PCR	CF4S-S216	SUCTF205-16	MUCFPL205-6	C4F100SSG

Base Industry Part Number Variations and Features											
IPN	Bearing Type	Bore	Insert Material	Housing Material	H1 Grease Type		IPN	Cap Capable (Y/N)	End Caps (Y/N)	# of End Caps	End Caps Description
SUCFPL205-16	4-Bolt Flange Unit	1"	Stainless	Thermoplastic	H1 Grease		SUCFPL205-16	Yes	N/A	N/A	N/A
SUCFPL205-16CC	4-Bolt Flange Unit	1"	Stainless	Thermoplastic	H1 Grease		SUCFPL205-16CC	Yes	Yes	1	1 closed
SUCFPL205-16C0	4-Bolt Flange Unit	1"	Stainless	Thermoplastic	H1 Grease		SUCFPL205-16C0	Yes	Yes	1	1 open
SUCFPL205-16FG1	4-Bolt Flange Unit	1"	Stainless	Thermoplastic	H1 Solid Lube		SUCFPL205-16FG1	Yes	N/A	N/A	N/A
SUCFPL205-16CCFG1	4-Bolt Flange Unit	1"	Stainless	Thermoplastic	H1 Solid Lube		SUCFPL205-16CCFG1	Yes	Yes	1	1 closed
SUCFPL205-16C0FG1	4-Bolt Flange Unit	1"	Stainless	Thermoplastic	H1 Solid Lube		SUCFPL205-16C0FG1	Yes	Yes	1	1 open

# SUCNFL - Thermoplastic Two-Bolt Flange



Base Industry Part Number and Bore	
Bore	Base IPN
1/2	SUCNFL201-08
5/8	SUCNFL202-10
17MM	SUCNFL203
20MM	SUCNFL204
3/4	SUCNFL204-12
25mm	SUCNFL205
1"	SUCNFL205-16
30MM	SUCNFL206
1-1/8	SUCNFL206-18
1-3/16	SUCNFL206-19
1-1/4	SUCNFL206-20
35MM	SUCNFL207
1-1/4	SUCNFL207-20
1-3/8	SUCNFL207-22
1-7/16	SUCNFL207-23
40MM	SUCNFL208
1-1/2	SUCNFL208-24



Series Interchanges				
DODGE	Regal	IPTCI	AMI	SKF/MRC
F2B-SCEZ-100-PCR	CF2S-S216	SUCTFL205-16	MUCNFL205-16	C2F100SSG

Base Industry Part Number Variations and Features											
IPN	Bearing Type	Bore	Insert Material	Housing Material	H1 Grease Type		IPN	Cap Capable (Y/N)	End Caps (Y/N)	# of End Caps	End Caps Description
SUCNFL205-16	2-Bolt Flange Unit	1"	Stainless	Thermoplastic	H1 Grease		SUCNFL205-16	Yes	N/A	N/A	N/A
SUCNFL205-16CC	2-Bolt Flange Unit	1"	Stainless	Thermoplastic	H1 Grease		SUCNFL205-16CC	Yes	Yes	1	1 closed
SUCNFL205-16C0	2-Bolt Flange Unit	1"	Stainless	Thermoplastic	H1 Grease		SUCNFL205-16C0	Yes	Yes	1	1 open
SUCNFL205-16FG1	2-Bolt Flange Unit	1"	Stainless	Thermoplastic	H1 Solid Lube		SUCNFL205-16FG1	Yes	N/A	N/A	N/A
SUCNFL205-16CCFG1	2-Bolt Flange Unit	1"	Stainless	Thermoplastic	H1 Solid Lube		SUCNFL205-16CCFG1	Yes	Yes	1	1 closed
SUCNFL205-16C0FG1	2-Bolt Flange Unit	1"	Stainless	Thermoplastic	H1 Solid Lube		SUCNFL205-16C0FG1	Yes	Yes	1	1 open



# SUCFBL - Thermoplastic Three-Bolt Flange



Base Industry Part Number and Bore	
Bore	Base IPN
1/2	SUCFBL201-08
5/8	SUCFBL202-10
17MM	SUCFBL203
20MM	SUCFBL204
3/4	SUCFBL204-12
25mm	SUCFBL205
1"	SUCFBL205-16
30MM	SUCFBL206
1-1/8	SUCFBL206-18
1-3/16	SUCFBL206-19
1-1/4	SUCFBL206-20
35MM	SUCFBL207
1-1/4	SUCFBL207-20
1-3/8	SUCFBL207-22
1-7/16	SUCFBL207-23
40MM	SUCFBL208
1-1/2	SUCFBL208-24



Series Interchanges				
DODGE	Regal	IPTCI	AMI	SKF/MRC
FB-SCEZ-100-PCR	CPS-S216	SUCTP205-16	MUCFBL205-16	CPB100SSG

Base Industry Part Number Variations and Features											
IPN	Bearing Type	Bore	Insert Material	Housing Material	H1 Grease Type		IPN	Cap Capable (Y/N)	End Caps (Y/N)	# of End Caps	End Caps Description
SUCFBL205-16	3-Bolt Flange Unit	1"	Stainless	Thermoplastic	H1 Grease		SUCFBL205-16	Yes	N/A	N/A	N/A
SUCFBL205-16CC	3-Bolt Flange Unit	1"	Stainless	Thermoplastic	H1 Grease		SUCFBL205-16CC	Yes	Yes	1	1 closed
SUCFBL205-16C0	3-Bolt Flange Unit	1"	Stainless	Thermoplastic	H1 Grease		SUCFBL205-16C0	Yes	Yes	1	1 open
SUCFBL205-16FG1	3-Bolt Flange Unit	1"	Stainless	Thermoplastic	H1 Solid Lube		SUCFBL205-16FG1	Yes	N/A	N/A	N/A
SUCFBL205-16CCFG1	3-Bolt Flange Unit	1"	Stainless	Thermoplastic	H1 Solid Lube		SUCFBL205-16CCFG1	Yes	Yes	1	1 closed
SUCFBL205-16C0FG1	3-Bolt Flange Unit	1"	Stainless	Thermoplastic	H1 Solid Lube		SUCFBL205-16C0FG1	Yes	Yes	1	1 open



Since 1918, NTN has been a trusted OE manufacturer of high-performing bearing products that increase productivity and efficiency.

- NTN has been the world's broad-line bearing manufacturer for nearly 100 years.
- NTN has the largest bearing manufacturing footprint in the United States.
- NTN is the largest supplier of American-made products to the construction and mining industries.
- NTN is a major supplier to over two-thirds of the world's "Fortune 500" manufacturing companies.
- More cars worldwide ride on NTN bearings and drivetrains than any other manufacturer's product.



◀ NTN was the first bearing manufacturer to be awarded the prestigious Deming Prize for recognition of its quality products and systems.



# Beyond Bearings

Training. Installation Support.  
Trouble-shooting. And more.

When you choose NTN, your team is equipped with all the necessary tools and resources to get the job done right. From installation to problem-solving, we'll be there with the hands-on support you need to take on your toughest challenges. This includes extra services such as:



## Technical Training Unit

On-site, mobile training unit offering specialized, hands-on instruction from NTN engineers



## Product Training School

Three days of in-depth instruction from NTN engineers at NTN headquarters  
([go.ntnamericas.com/trainingschool](http://go.ntnamericas.com/trainingschool))



## eKnowledge

WEB-BASED TRAINING PROGRAM

Six online product training modules covering different bearing types and nomenclature  
([www.ntnamericas.com/eknowledge](http://www.ntnamericas.com/eknowledge))



## NTN Bearing Finder

Customizable search tool featuring exhaustive data sets, comprehensive part interchanges and interactive CAD drawings  
([bearingfinder.ntnamericas.com](http://bearingfinder.ntnamericas.com))



Ready to get rolling? Contact us today for full details at  
1-800-323-2358 or [eng@ntnamerica.com](mailto:eng@ntnamerica.com).

# NTN<sup>®</sup>

NTN BEARING CORPORATION OF AMERICA • 1600 E. Bishop Court • Mount Prospect, IL 60056-7604, U.S.A.

Tel: 847-298-7500 • Fax: 847-294-1205 • [www.ntnamericas.com](http://www.ntnamericas.com)

NTN is a registered trademark of NTN Corporation. Osaka, Japan