



MILLER BEARING COMPANY, INC.

BEARING SPECIFICATIONS CATALOG

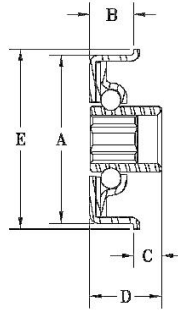
420 Portage Boulevard, Brimfield, OH 44240

Phone: 330.678.8844

Fax: 330.678.1765

Web: MillerBearing.com

Email: Sales@MillerBearing.com



Bearing Number	A	B	C	D	E	Bore	Load Rating
F-1272-4	1.272	11/32	7/32	9/16	1-3/8	0.255/0.252	47#
F-1272-4H	1.272	11/32	7/32	9/16	1-3/8	0.257/0.253 Hex	47#
F-1272-4HL	1.272	13/32	9/32	5/8	1-3/8	0.257/0.253 Hex	47#
F-1272-5	1.272	11/32	7/32	9/16	1-3/8	0.319/0.315	47#
F-1272-5H	1.272	11/32	7/32	9/16	1-3/8	0.322/0.317 Hex	47#
F-1272-5HL	1.272	13/32	9/32	5/8	1-3/8	0.322/0.317 Hex	47#

A: Dimension Tolerance = +0.010/-0.000

Bearing Number	A	B	C	D	E	Bore	Load Rating
F-1281-4	1.281	11/32	7/32	9/16	1-3/8	0.255/0.252	47#
F-1281-4H	1.281	11/32	7/32	9/16	1-3/8	0.257/0.253 Hex	47#
F-1281-4HL	1.281	13/32	9/32	5/8	1-3/8	0.257/0.253 Hex	47#
F-1281-5	1.281	11/32	7/32	9/16	1-3/8	0.319/0.315	47#
F-1281-5H	1.281	11/32	7/32	9/16	1-3/8	0.322/0.317 Hex	47#
F-1281-5HL	1.281	13/32	9/32	5/8	1-3/8	0.322/0.317 Hex	47#

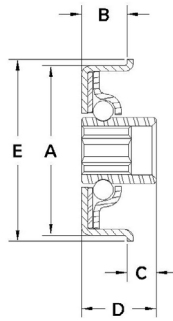
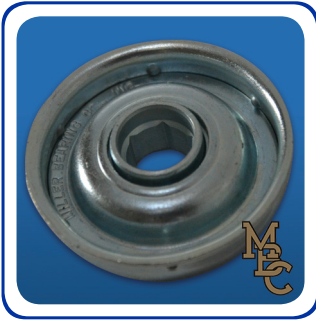
A: Dimension Tolerance = +0.010/-0.000

FEATURES

The bearings above have 11- 5/32" Diameter balls.

These bearings may be ordered with light oil or grease packed lubricant.

S added to the end of the part number designates an external rubber seal added to the front of the bearing.



Bearing Number	A	B	C	D	E	Bore	Load Rating
F-1625-7H	1.625	23/64	11/64	17/32	1-3/4	0.451/0.450 Hex	135#
F-1665-7H	1.665	23/64	11/64	17/32	1-25/32	0.451/0.450 Hex	135#
F-1701-4	1.701	23/64	11/64	17/32	1-27/32	0.258/0.253	135#
F-1701-5	1.701	23/64	11/64	17/32	1-27/32	0.319/0.315	135#
F-1701-5H	1.701	23/64	11/64	17/32	1-27/32	0.322/0.317 Hex	135#
F-1701-6	1.701	23/64	11/64	17/32	1-27/32	0.382/0.377	135#
F-1701-6H	1.701	23/64	11/64	17/32	1-27/32	0.384/0.382 Hex	135#
F-1701-7H	1.701	23/64	11/64	17/32	1-27/32	0.451/0.450 Hex	135#
F-1701-7HL	1.701	23/64	1/4	39/64	1-27/32	0.460/0.455 Hex	135#
F-1701-8	1.701	23/64	11/64	17/32	1-27/32	0.505/0.501	135#
F-1722-4	1.722	23/64	11/64	17/32	1-53/64	0.258/0.253	135#
F-1722-5	1.722	23/64	11/64	17/32	1-53/64	0.319/0.315	135#
F-1722-5H	1.722	23/64	11/64	17/32	1-53/64	0.322/0.317 Hex	135#
F-1722-7H	1.722	23/64	11/64	17/32	1-53/64	0.451/0.450 Hex	135#
F-1722-7H-1	1.722	23/64	9/32	43/64	1-53/64	0.451/0.450 Hex	135#
F-1775-4	1.775	23/64	11/64	17/32	1.900	0.258/0.253	135#
F-1775-5	1.775	23/64	11/64	17/32	1.900	0.319/0.315	135#
F-1775-5H	1.775	23/64	11/64	17/32	1.900	0.322/0.317 Hex	135#
F-1775-6	1.775	23/64	11/64	17/32	1.900	0.382/0.377	135#
F-1775-6H	1.775	23/64	11/64	17/32	1.900	0.384/0.382 Hex	135#
F-1775-7H	1.775	23/64	11/64	17/32	1.900	0.451/0.450 Hex	135#
F-1775-8	1.775	23/64	11/64	17/32	1.900	0.505/0.501	135#

A: Dimension Tolerance = +0.010/-0.000

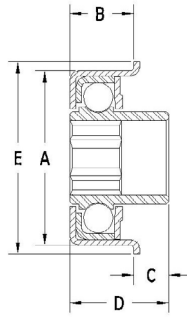
FEATURES

The bearings above have 11- 1/4" Diameter balls.

These bearings may be ordered with light oil or grease packed lubricant.

T added to the end of the part number designates a nylatron seal added to the front of the bearing.

* Bore dimensions are interchangeable throughout the above bearings.



Bearing Number	A	B	C	D	E	Bore	Load Rating
FC-1250-5	1.248	29/64	1/4	45/64	1-3/8	0.319/0.315	198#
FC-1250-5H	1.248	29/64	1/4	45/64	1-3/8	0.322/0.317 Hex	198#
FC-1250-7H	1.248	29/64	1/4	45/64	1-3/8	0.451/0.450 Hex	198#

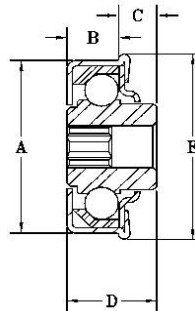
A: Dimension Tolerance = +0.010/-0.000

FEATURES

The bearings above have 12- 7/32" Diameter balls.

These bearings may be ordered with light oil or grease packed lubricant.

T added to the end of the part number designates a nylatron seal added to the front of the bearing.



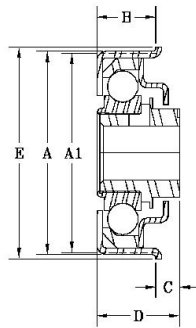
Bearing Number	A	B	C	D	E	Bore	Load Rating
MFC-1500-7H	1.500	7/16	5/16	3/4	1-5/8	0.451/0.450 Hex	248#

A: Dimension Tolerance = +0.010/-0.000

FEATURES

The bearing above has 11- 9/32" Diameter balls.

This bearing may be ordered with light oil or grease packed lubricant.



Bearing Number	A	A1	B	C	D	E	Bore	Load Rating
F-1710-7H	1.715	1.670	33/64	1/4	47/64	1.800	0.451/0.450 Hex	180#
FC-1710-7H	1.715	1.670	33/64	1/4	47/64	1.800	0.451/0.450 Hex	252#
FCR-1710-7H	1.715	1.670	33/64	1/4	47/64	1.800	0.451/0.450 Hex	304#
FH-1775-7H	1.775	N/A	35/64	7/32	49/64	1.900	0.451/0.450 Hex	180#
FC-1775-7H	1.775	N/A	35/64	7/32	49/64	1.900	0.451/0.450 Hex	252#
FCR-1775-7H	1.775	N/A	35/64	7/32	49/64	1.900	0.451/0.450 Hex	304#

A and A1: Dimension Tolerance = +0.010/-0.000

FEATURES

F & FH bearings have 12- 9/32” Diameter balls.

FC bearings have 13- 17/64” Diameter balls.

FCR or MFCR bearings have 8- 17/64” Diameter balls and a ball retainer for higher speed applications.

These bearings have a plastic insert which acts to quiet the bearing, also allowing it to be re-greased.

M at the beginning of the part number designates an all metal inner race.

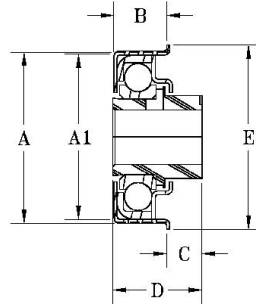
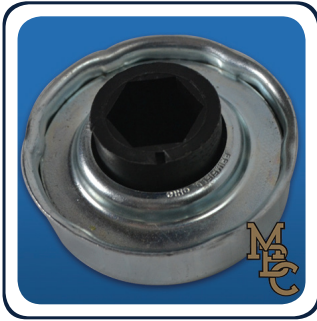
The unique rib feature (**1710 Series only**) is designed to help accommodate the variations in tubing I.D. tolerances.

These bearings may be ordered with light oil or grease packed lubricant.

S added to the end of the part number designates a felt seal added to the front of the bearing.

T added to the end of the part number designates a Teflon¹ seal added to the front of the bearing.

¹ Teflon is a trademark of DuPont



Bearing Number	A	A1	B	C	D	E	Bore	Load Rating
FC-2280-10H	2.280	2.250	23/32	15/32	1-3/16	2-7/16	0.640/0.635 Hex	425#
FC-2280-11H	2.280	2.250	23/32	15/32	1-3/16	2-7/16	0.703/0.698 Hex	425#
FC-2280-11HV	2.280	2.250	23/32	7/32	15/16	2-7/16	0.703/0.698 Hex	425#
MFC-2280-7H	2.280	2.250	23/32	15/32	1-3/16	2-7/16	0.451/0.450 Hex	425#
MFC-2280-7HV	2.280	2.250	23/32	7/32	15/16	2-7/16	0.451/0.450 Hex	425#
MFC-2280-8V	2.280	2.250	23/32	7/32	15/16	2-7/16	0.505/0.501	425#
MFC-2280-9H	2.280	2.250	23/32	15/32	1-3/16	2-7/16	0.573/0.571 Hex	425#
MFC-2280-10	2.280	2.250	23/32	15/32	1-3/16	2-7/16	0.629/0.627	425#
MFC-2280-10V	2.280	2.250	23/32	7/32	15/16	2-7/16	0.629/0.627	425#
MFC-2280-10H	2.280	2.250	23/32	15/32	1-3/16	2-7/16	0.640/0.635 Hex	425#
MFC-2280-10HV	2.280	2.250	23/32	7/32	15/16	2-7/16	0.640/0.635 Hex	425#
MFC-2280-11H	2.280	2.250	23/32	15/32	1-3/16	2-7/16	0.703/0.698 Hex	425#
MFC-2280-11HV	2.280	2.250	23/32	7/32	15/16	2-7/16	0.703/0.698 Hex	425#
MFC-2280-12	2.280	2.250	23/32	15/32	1-3/16	2-7/16	0.757/0.753	425#
MFC-2280-12V	2.280	2.250	23/32	7/32	15/16	2-7/16	0.757/0.753	425#
MFC-2280-12H	2.280	2.250	23/32	15/32	1-3/16	2-7/16	0.770/0.765 Hex	425#
MFC-2280-12HV	2.280	2.250	23/32	7/32	15/16	2-7/16	0.770/0.765 Hex	425#

A and A1: Dimension Tolerance = +0.010/-0.000

FEATURES

The bearings above have 13- 3/8" Diameter balls.

FC at the beginning of the part number designates a plastic insert which acts to quiet the bearing, also allowing it to be re-greased.

MFC designates an all metal inner race.

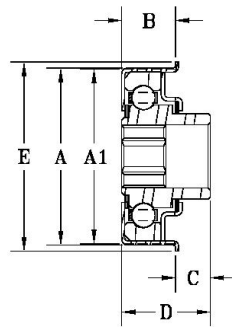
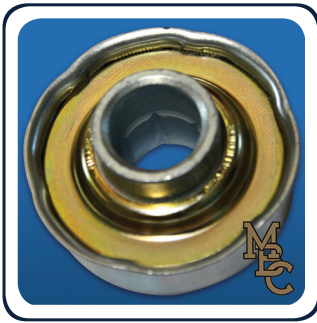
The unique rib feature is designed to help accommodate the variations in tubing I.D. tolerances.

S added to the end of the part number designates a felt seal added to the front of the bearing.

T added to the end of the part number designates a Teflon¹ seal added to the front of the bearing.

All of the above bearings are also available with a non-ribbed case which has a 2.265 **A** Dimension. Substitute **2280** with **2265** in the part number to specify this feature.

¹ Teflon is a trademark of DuPont



Bearing Number	A	A1	B	C	D	E	Bore	Load Rating
F-2511-10HSP	2.280	2.250	23/32	15/32	1-3/16	2-7/16	0.640/0.635 Hex	620#
F-2511-11HSP	2.280	2.250	23/32	15/32	1-3/16	2-7/16	0.703/0.698 Hex	620#
F-2511-11HVSP	2.280	2.250	23/32	7/32	15/16	2-7/16	0.703/0.698 Hex	620#
MF-2511-7HSP	2.280	2.250	23/32	15/32	1-3/16	2-7/16	0.451/0.450 Hex	620#
MF-2511-7HVSP	2.280	2.250	23/32	7/32	15/16	2-7/16	0.451/0.450 Hex	620#
MF-2511-10HSP	2.280	2.250	23/32	15/32	1-3/16	2-7/16	0.640/0.635 Hex	620#
MF-2511-10HVSP	2.280	2.250	23/32	7/32	15/16	2-7/16	0.640/0.635 Hex	620#
MF-2511-11HSP	2.280	2.250	23/32	15/32	1-3/16	2-7/16	0.703/0.698 Hex	620#
MF-2511-11HSTP	2.280	2.250	23/32	15/32	1-3/16	2-7/16	0.703/0.698 Hex	620#
MF-2511-11HVSP	2.280	2.250	23/32	7/32	15/16	2-7/16	0.703/0.698 Hex	620#
MF-2511-11HVSTP	2.280	2.250	23/32	7/32	15/16	2-7/16	0.703/0.698 Hex	620#

A and A1: Dimension Tolerance = +0.010/-0.000

FEATURES

The bearings above have 9- 5/16" Diameter balls and retainer.

The ball retainer spaces the balls and eliminates contact friction between the balls, allowing higher operating speed while significantly reducing the noise level of the conveyor system.

F designates a plastic insert which acts to quiet the bearing, also allowing it to be re-greased.

MF designates an all metal inner race.

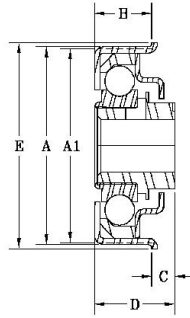
The unique rib feature is designed to help accommodate the variations in tubing I.D. tolerances.

These bearings may be ordered with light oil or grease packed lubricant.

SP These bearings come standard with a felt seal added to the front and a nylatron seal added to the back of the bearing.

T added to the end of the part number designates a Teflon¹ seal added to the front of the bearing.

¹ Teflon is a trademark of DuPont



Bearing Number	A	A1	B	C	D	E	Bore	Load Rating
F-1912-7HS	1.715	1.670	17/32	7/32	23/32	1.800	0.451/0.450 Hex	428#
F-1916-7HS	1.775	N/A	35/64	7/32	49/64	1.900	0.451/0.450 Hex	428#
MF-1912-7HS	1.715	1.670	17/32	7/32	23/32	1.800	0.451/0.450 Hex	428#
MF-1916-7HS	1.775	N/A	35/64	7/32	49/64	1.900	0.451/0.450 Hex	428#

A and A1: Dimension Tolerance = +0.010/-0.000

FEATURES

The bearings above have 8- 17/64" Diameter balls and retainer.

The ball retainer spaces the balls and eliminates contact friction between the balls, allowing higher operating speed, while significantly reducing the noise level of the conveyor system.

F designates a plastic insert which acts to quiet the bearing, also allowing it to be re-greased.

MF designates an all metal inner race.

The unique rib feature (**1912 Series only**) is designed to help accommodate the variations in tubing I.D. tolerances.

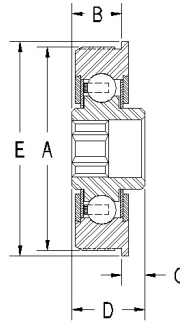
These bearings may be ordered with light oil or grease packed lubricant.

S These bearings come standard with a front felt seal.

T added to the end of the part number designates a Teflon¹ seal added to the front of the bearing.

P (1912 series only) added to the end of the part number designates a nylatron seal added to the back of the bearing.

¹ Teflon is a trademark of DuPont



Bearing Number	A	B	C	D	E	Bore	Load Rating
R-1125-4DS	1.125	13/32	11/32	9/16	No Flange	0.255/0.252	276#
R-1125-4HDS	1.125	13/32	11/32	9/16	No Flange	0.257/0.253 Hex	276#
R-1125-5DS	1.125	13/32	11/32	9/16	No Flange	0.319/0.315	276#
R-1125-5HDS	1.125	13/32	11/32	9/16	No Flange	0.322/0.317 Hex	276#
FR-1125-4DS	1.125	11/32	7/32	9/16	1.202	0.255/0.252	276#
FR-1125-4HDS	1.125	11/32	7/32	9/16	1.202	0.257/0.253 Hex	276#
FR-1125-5DS	1.125	11/32	7/32	9/16	1.202	0.319/0.315	276#
FR-1125-5HDS	1.125	11/32	7/32	9/16	1.202	0.322/0.317 Hex	276#
FR-1281-4DS	1.281	11/32	7/32	9/16	1.355	0.255/0.252	276#
FR-1281-4HDS	1.281	11/32	7/32	9/16	1.355	0.257/0.253 Hex	276#
FR-1281-5DS	1.281	11/32	7/32	9/16	1.355	0.319/0.315	276#
FR-1281-5HDS	1.281	11/32	7/32	9/16	1.355	0.322/0.317 Hex	276#

A Dimension tolerance = +0.010/-0.000, B and E Dimension tolerance = +0.010/-0.010

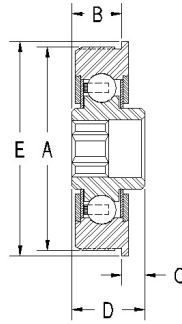
FEATURES

The bearings above have 7- 7/32" Diameter balls and retainer.

These bearings are produced with a 16 teeth per inch knurl on the outside body of the bearing, (**A** Dimension), to assist in the assembly of the roll.

These bearings may be ordered with light oil or grease packed lubricant.

DS following the part number designates a front and a back seal. The **DS** is standard on the **FR** Series.



Bearing Number	A	B	C	D	E	Bore	Load Rating
FR-1498-7HDS	1.498	0.422	19/64	23/32	1.600	0.451/0.450 Hex	302#
FR-1498-7HIDS	1.498	0.422	7/32	41/64	1.600	0.451/0.450 Hex	302#
FR-1498-7H-1DS	1.498	0.422	17/32	63/64	1.600	0.451/0.450 Hex	302#
FR-1498-7H-2DS	1.498	0.422	9/32	25/32	1.600	0.451/0.450 Hex	302#
FR-1524-7HDS	1.524	0.422	19/64	23/32	1.625	0.451/0.450 Hex	302#
FR-1524-7HIDS	1.524	0.422	7/32	41/64	1.625	0.451/0.450 Hex	302#
FR-1524-7H-1DS	1.524	0.422	17/32	63/64	1.625	0.451/0.450 Hex	302#
FR-1524-7H-2DS	1.524	0.422	9/32	25/32	1.625	0.451/0.450 Hex	302#

A Dimension tolerance = +0.010/-0.000, B and E Dimension tolerance = +0.010/-0.010

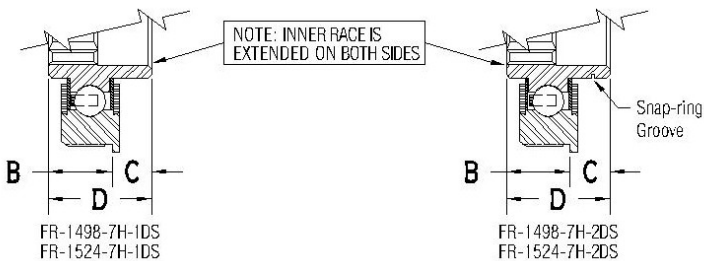
FEATURES

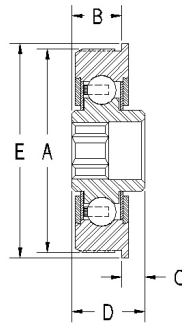
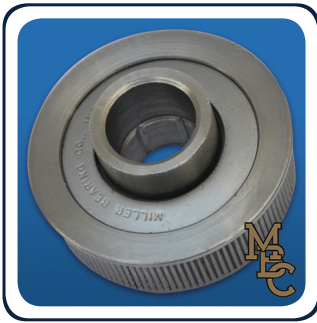
The bearings above have 8- 7/32" Diameter balls and retainer.

These bearings are produced with a 16 teeth per inch knurl on the outside body of the bearing, (A Dimension), to assist in the assembly of the roll.

These bearings may be ordered with light oil or grease packed lubricant.

DS following the part number designates a front and a back seal. The **DS** is standard on the **FR** Series.





Bearing Number	A	B	C	D	E	Bore	Load Rating
FR-1598-5DS	1.598	0.422	7/32	43/64	1.700	0.319/0.315	428#
FR-1598-5HDS	1.598	0.422	7/32	43/64	1.700	0.322/0.317 Hex	428#
FR-1598-7HDS	1.598	0.422	7/32	43/64	1.700	0.451/0.450 Hex	428#
FR-1598-7H-1DS	1.598	0.422	11/32	15/16	1.700	0.451/0.450 Hex	428#
FR-1598-7HEDS	1.598	0.422	3/16	41/64	1.700	0.451/0.450 Hex	428#
FR-1598-7HFDS	1.598	0.422	19/64	23/32	1.700	0.451/0.450 Hex	428#
FR-1598-8DS	1.598	0.422	7/32	43/64	1.700	0.508/0.503	428#
FR-1625-5DS	1.625	0.422	7/32	43/64	1.740	0.319/0.315	428#
FR-1625-5HDS	1.625	0.422	7/32	43/64	1.740	0.322/0.317 Hex	428#
FR-1625-7HDS	1.625	0.422	7/32	43/64	1.740	0.451/0.450 Hex	428#
FR-1625-7H-1DS	1.625	0.422	11/32	15/16	1.740	0.451/0.450 Hex	428#
FR-1625-7HEDS	1.625	0.422	3/16	41/64	1.740	0.451/0.450 Hex	428#
FR-1625-7HFDS	1.625	0.422	19/64	23/32	1.740	0.451/0.450 Hex	428#
FR-1625-8DS	1.625	0.422	7/32	43/64	1.740	0.508/0.503	428#

A Dimension tolerance = +0.010/-0.000, B and E Dimension tolerance = +0.010/-0.010

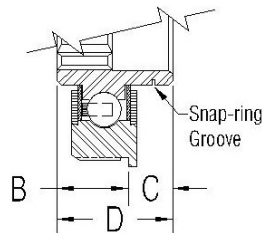
FEATURES

The bearings above have 8- 17/64” Diameter balls and retainer.

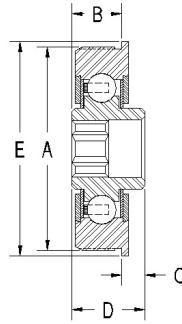
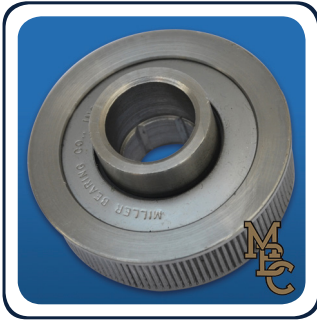
These bearings are produced with a 16 teeth per inch knurl on the outside body of the bearing, (A Dimension), to assist in the assembly of the roll.

These bearings may be ordered with light oil or grease packed lubricant.

DS following the part number designates a front and a back seal. The **DS** is standard on the **FR** Series.



NOTE: INNER RACE IS EXTENDED ON BOTH SIDES OF FR-XXXX-7H-1DS ONLY



Bearing Number	A	B	C	D	E	Bore	Load Rating
FR-1665-5DS**	1.665	0.422	7/32	43/64	1.770	0.317/0.315	428#
FR-1665-5HDS**	1.665	0.422	7/32	43/64	1.770	0.322/0.317 Hex	428#
FR-1665-7HDS	1.665	0.422	7/32	43/64	1.770	0.451/0.450 Hex	428#
FR-1665-7H-1DS	1.665	0.422	11/32	15/16	1.770	0.451/0.450 Hex	428#
FR-1665-7HEDS	1.665	0.422	3/16	41/64	1.770	0.451/0.450 Hex	428#
FR-1665-7HFDS**	1.665	0.422	19/64	23/32	1.770	0.451/0.450 Hex	428#
FR-1665-8DS	1.665	0.422	7/32	43/64	1.770	0.508/0.503	428#
FR-1707-5DS**	1.707	0.422	7/32	43/64	1.812	0.317/0.315	428#
FR-1707-5HDS**	1.707	0.422	7/32	43/64	1.812	0.322/0.317 Hex	428#
FR-1707-7HDS	1.707	0.422	7/32	43/64	1.812	0.451/0.450 Hex	428#
FR-1707-7H-1DS	1.707	0.422	11/32	15/16	1.812	0.451/0.450 Hex	428#
FR-1707-7HEDS	1.707	0.422	3/16	41/64	1.812	0.451/0.450 Hex	428#
FR-1707-7HFDS**	1.707	0.422	19/64	23/32	1.812	0.451/0.450 Hex	428#
FR-1707-8DS	1.707	0.422	7/32	43/64	1.812	0.508/0.503	428#

A Dimension tolerance = +0.010/-0.000, B and E Dimension tolerance = +0.010/-0.010

FEATURES

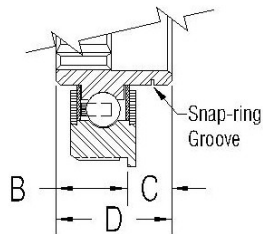
The bearings above have 8- 17/64” Diameter balls and retainer.

These bearings are produced with a 16 teeth per inch knurl on the outside body of the bearing, (A Dimension), to assist in the assembly of the roll.

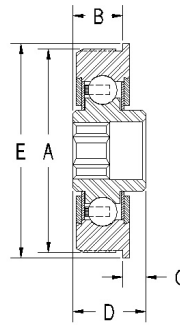
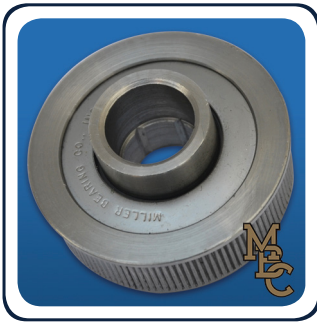
These bearings may be ordered with light oil or grease packed lubricant.

DS following the part number designates a front and a back seal. The **DS** is standard on the **FR** Series.

**** Stainless Steel is special order only – Call for quote**



NOTE: INNER RACE IS EXTENDED ON BOTH SIDES OF FR-XXXX-7H-1DS ONLY



Bearing Number	A	B	C	D	E	Bore	Load Rating
FR-1775-7HDS	1.775	0.422	7/32	43/64	1.880	0.451/0.450 Hex	428#
FR-1775-7H-1DS	1.775	0.422	11/32	15/16	1.880	0.451/0.450 Hex	428#
FR-1775-7HEDS	1.775	0.422	3/16	41/64	1.880	0.451/0.450 Hex	428#
FR-1775-7HFDS	1.775	0.422	19/64	23/32	1.880	0.451/0.450 Hex	428#
FR-1875-7HDS	1.875	0.422	7/32	43/64	1.980	0.451/0.450 Hex	428#
FR-1875-7H-1DS	1.875	0.422	11/32	15/16	1.980	0.451/0.450 Hex	428#
FR-1875-7HEDS	1.875	0.422	3/16	41/64	1.980	0.451/0.450 Hex	428#
FR-1875-7HFDS	1.875	0.422	19/64	23/32	1.980	0.451/0.450 Hex	428#
FR-2265-10HDS**	2.265	0.718	0.468	1.187	2.435	0.640/0.635 Hex	1050#
FR-2265-11HDS**	2.265	0.718	0.468	1.187	2.435	0.703/0.698 Hex	1050#
FR-2265-11HVDS**	2.265	0.718	0.218	0.937	2.435	0.703/0.698 Hex	1050#
FR-2280-10HDS	2.280	0.718	0.468	1.187	2.435	0.640/0.635 Hex	1050#
FR-2280-11HDS	2.280	0.718	0.468	1.187	2.435	0.703/0.698 Hex	1050#
FR-2280-11HVDS	2.280	0.718	0.218	0.937	2.435	0.703/0.698 Hex	1050#

A Dimension tolerance = +0.010/-0.000, B and E Dimension tolerance = +0.010/-0.010

FEATURES

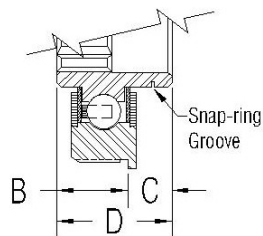
The bearings above have 8- 17/64” Diameter balls and retainer.

These bearings are produced with a 16 teeth per inch knurl on the outside body of the bearing, (A Dimension), to assist in the assembly of the roll.

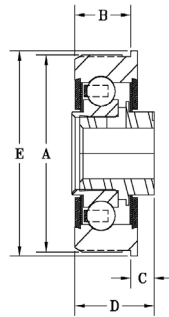
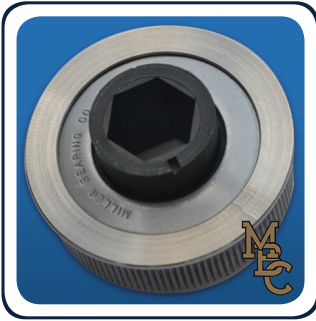
These bearings may be ordered with light oil or grease packed lubricant.

DS following the part number designates a front and a back seal. The **DS** is standard on the **FR** Series.

**** Stainless Steel is special order only – Call for quote**



NOTE: INNER RACE IS EXTENDED ON BOTH SIDES OF FR-XXXX-7H-1DS ONLY



Bearing Number	A	B	C	D	E	Bore	Load Rating
FR-1775-7HRDS*	1.775	0.522	0.218	0.765	1.880	0.451/0.450 Hex	428#
FR-2265-10HRDS**	2.265	0.718	0.468	1.187	2.435	0.640/0.635 Hex	1050#
FR-2265-11HRDS**	2.265	0.718	0.468	1.187	2.435	0.703/0.698 Hex	1050#
FR-2265-11HVRDS**	2.265	0.718	0.218	0.937	2.435	0.703/0.698 Hex	1050#
FR-2280-10HRDS	2.280	0.718	0.468	1.187	2.435	0.640/0.635 Hex	1050#
FR-2280-11HRDS	2.280	0.718	0.468	1.187	2.435	0.703/0.698 Hex	1050#
FR-2280-11HVRDS	2.280	0.718	0.218	0.937	2.435	0.703/0.698 Hex	1050#

A Dimension tolerance = +0.010/-0.000. B, C, D and E Dimension tolerance = +0.010/-0.010

FEATURES

The bearings above have 8- 17/64” Diameter balls and retainer.

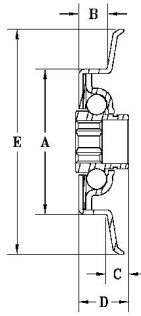
These bearings are produced with a 16 teeth per inch knurl on the outside body of the bearing, (**A** Dimension), to assist in the assembly of the roll.

These bearings may be ordered with light oil or grease packed lubricant.

DS following the part number designates a front and a back seal. The **DS** is standard on the **FR** Series.

* Not available in Carbon Steel

** Stainless Steel is special order only—Call for quote



Bearing Number	A	B	C	D	E	Bore	Load Rating
LF-1775-7H	1.775	23/64	5/16	43/64	2-3/4	0.451/0.450 Hex	135#

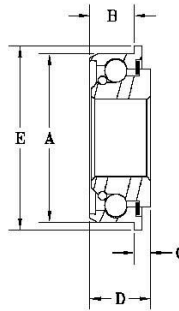
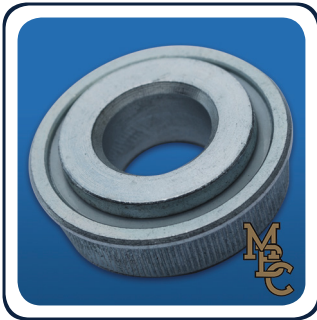
A Dimension tolerance = +0.010/-0.000.

FEATURES

The bearing above has 11- 1/4" Diameter balls.

This bearing may be ordered with light oil or grease packed lubricant.

T added to the end of the part number designates a nylatron seal added to the front of the bearing.



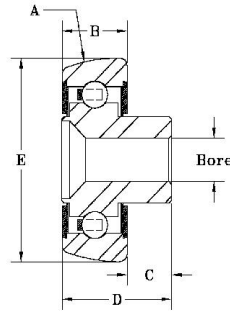
Bearing Number	A	B	C	D	E	Bore	Load Rating
WF-1375-7H	1.380	3/8	1/8	1/2	1-1/2	7/16 Hex	196#
WF-1375-8	1.380	3/8	1/8	1/2	1-1/2	1/2	196#
WF-1375-10	1.380	3/8	1/8	1/2	1-1/2	5/8	196#
WF-1375-12	1.380	3/8	1/8	1/2	1-1/2	3/4	196#

A and B Dimension tolerance = +0.005/-0.005

FEATURES

The bearings above have 18- 3/16" Diameter balls.

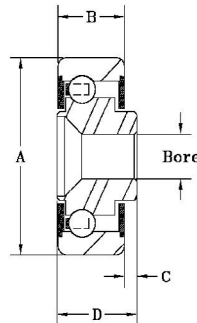
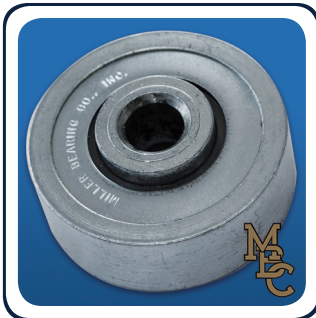
These bearings come standard with a seal on the front and a metal shield on the back.



Bearing Number	A	B	C	D	E	Bore	Load Rating
R-2375-8C	1.906 Radius	25/32	17/32	1-21/64	2.365	0.508/0.504	1050#
R-2375-8CV	1.906 Radius	25/32	5/32	15/16	2.365	0.508/0.504	1050#

FEATURES

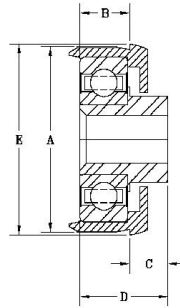
The bearings above have 9- 5/16" Diameter balls and retainer.
 These bearings may be ordered dry, with light oil or grease packed lubricant.
 These bearings come standard with an internal nylatron seal added to each side of the bearing.



Bearing Number	A	B	C	D	Bore	Load Rating
R-2250-8	2.230	25/32	17/32	1-21/64	0.508/0.504	1050#
R-2250-8V	2.230	25/32	5/32	15/16	0.508/0.504	1050#

FEATURES

The bearings above have 9- 5/16" Diameter balls and retainer.
 These bearings may be ordered dry, with light oil or grease packed lubricant.
 These bearings come standard with an internal nylatron seal added to each side of the bearing.



Bearing Number	A	B	C	D	E	Bore	Load Rating
PF-1775-7H	1.775	0.490	3/8	0.865	1.825	0.455/0.450 Hex	1000#

A Dimension tolerance = +0.010/-0.000

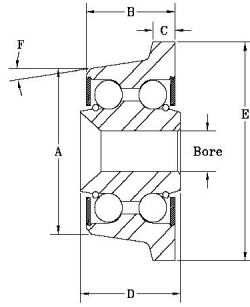
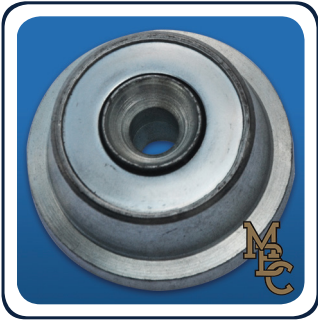
FEATURES

The bearing above has 8- 17/64" Diameter balls and retainer.

This bearing is a precision ABEC-1 rated 6203 bearing, pressed into our specially designed housing.

The precision bearing combined with our plastic insert gives maximum noise reduction to the conveyor system.

This bearing comes grease packed and dust shielded.

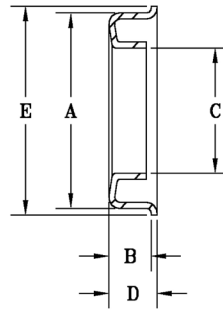


Bearing Number	A	B	C	D	E	F	Bore	Load Rating
DWF-1800-7	1.800	1.000	0.250	1.125	2.370	8°	0.451/0.437	1000#

A Dimension tolerance = +0.010/-0.000

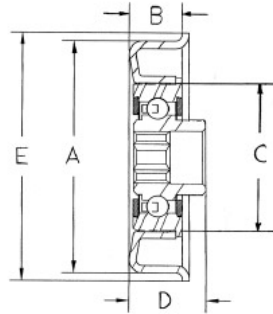
FEATURES

The bearing above has two rows of 12- 15/16” Diameter balls.
 This bearing may be ordered dry, with light oil or grease packed lubricant.



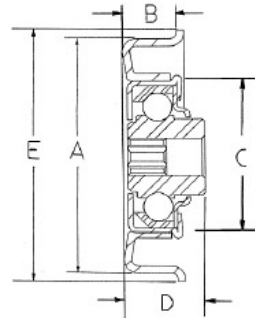
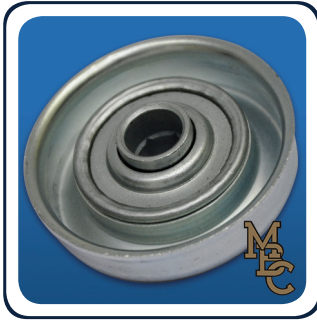
Endcup Number	A	B	C	D	E
F-2340EC	2.330	0.528	1.500/1.495	0.598	2.500

FR-1498 (see pg.9) with Endcup



Endcup Number	A	B	C	D	E	Bore	Load Rating
FR-2340EC-7HDS	2.330	0.528	1.500/1.495	23/32	2.500	0.451/0.450 Hex	302#
FR-2340EC-7HIDS	2.330	0.528	1.500/1.495	41/64	2.500	0.451/0.450 Hex	302#
FR-2340EC-7H-1DS	2.330	0.528	1.500/1.495	63/64	2.500	0.451/0.450 Hex	302#
FR-2340EC-7H-2DS	2.330	0.528	1.500/1.495	25/32	2.500	0.451/0.450 Hex	302#

MFC-1500 (see pg.3) with Endcup



Endcup Number	A	B	C	D	E	Bore	Load Rating
MFC-2340EC-7H	2.330	0.528	1.500/1.495	3/4	2.500	0.451/0.450 Hex	248#



WARRANTY

All Miller Bearing Company, Inc. products are warranted to be free from defects in materials and workmanship. The manufacturer's obligation under this is limited to the replacement of any Miller Bearing Company manufactured bearing product which proves to be defective within six months of the original date of purchase. Miller Bearing Company assumes no responsibility for contingent or consequential damage resulting from the use of its products.

This guarantee is in lieu of all warranties expressed or implied.