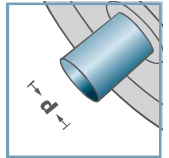


RL-0.280		
Type	D	B
RL-0.280	28,0	7,6
Other dimensions on request!		

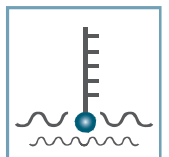
- ☛ Capsule: Steel, Zinc Plated
- ☛ Bearing Shell: Steel
- ☛ Ball: Steel
- ☛ Inner Race
  - ☛ Steel: C=10daN
  - ☛ Plastic: C=7daN; 0° - 80°

**RL-0.280**

**d** [mm]  
10; 12; 12,8



**C** [daN]  
7; 10



**T** [°C]  
0° - 80°



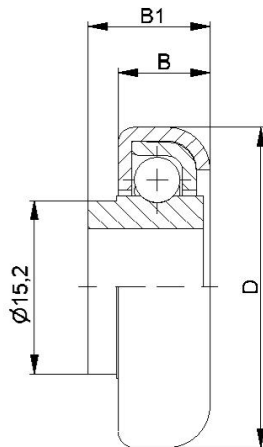
-



**Carton** [pcs.]

500

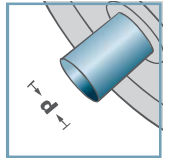
# Radial Ball Bearings

**RL-0.280 with collar**

Type	D	B	B1
RL-0.280 m.B.	28,0	7,6	10,0

**Other dimensions on request!**

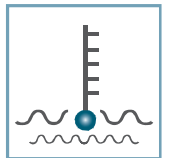
- ☛ Capsule: Steel, Zinc Plated
- ☛ Bearing Shell: Steel
- ☛ Ball, Steel
- ☛ Inner Race
  - ☛ Steel: C=10daN
  - ☛ Plastic: C=7daN; 0° - 80°

**RL-0.280**

10; 12



**C** [daN]  
7; 10



**T** [°C]  
0° - 80°



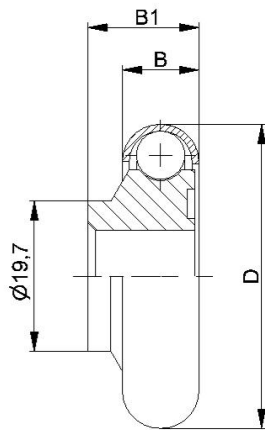
-



**Carton** [pcs.]

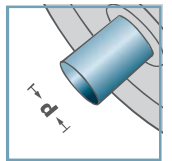
500

# Radial Ball Bearings



RL-0.400			
Type	D	B	B1
RL-0.400	40,0	10,0	14,5
Other dimensions on request!			

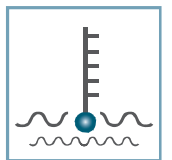
- ☛ Capsule: Steel, Zinc Plated
- ☛ Ball: Steel
- ☛ Inner Race: Plastic

**RL-0.400**

**d** [mm]  
12



**C** [daN]  
7



**T** [°C]  
0° - 80°



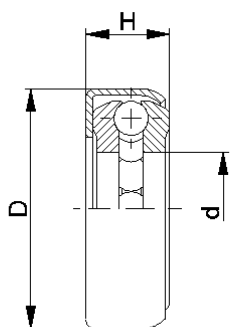
-



**Carton** [pcs.]

250

# Radial Ball Bearings



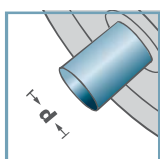
LL-				
Type	d	D	H	Load Rating C [daN]
LL-1.073	7,2	15,0	7,0	20
LL-1.082	8,2	15,8	6,85	20
LL-1.083	8,3	17,5	6,2	20
LL-1.093	9,3	17,5	6,2	20
LL-1.103	10,3	17,5	6,2	22

**Other dimensions on request!**

- ☛ Capsule: Steel
- ☛ Ball Race: Steel, hardened
- ☛ Ball: Steel



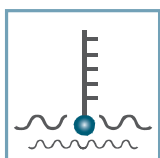
**LL-**



**d** [mm]  
7; 8; 9; 10



**C** [daN]  
20; 22



**T** [°C]  
-



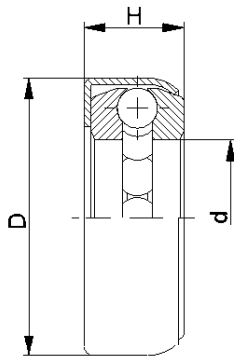
-



**Carton** [pcs.]

500

# Pressed Thrust Bearings

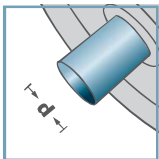


LL-				
Type	d	D	H	Load Rating C [daN]
LL-1.113	11,3	20,0	7,0	22
LL-1.123	12,3	22,0	8,0	22
LL-1.133	13,3	22,0	8,0	22
LL-1.141	14,15	22,0	7,7	22
Other dimensions on request!				

- ☛ Capsule: Steel
- ☛ Ball Race: Steel, hardened
- ☛ Ball: Steel



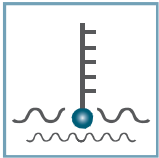
LL-



**d** [mm]  
11; 12; 13; 14



**C** [daN]  
22



**T** [°C]  
-



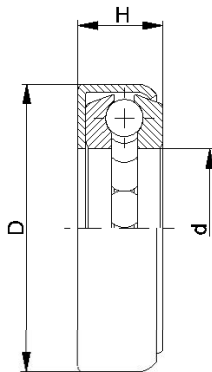
-



**Carton** [pcs.]

ø11: 500  
ø12: 250  
ø13: 250  
ø14: 250

# Pressed Thrust Bearings

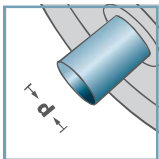


LL-				
Type	d	D	H	Load Rating C [daN]
LL-1.143	14,3	25,0	8,5	22
LL-1.163	16,4	27,0	9,0	24
LL-1.201	20,1	36,6	10,8	24
Other dimensions on request!				

- ☛ Capsule: Steel
- ☛ Ball Race: Steel, hardened
- ☛ Ball: Steel



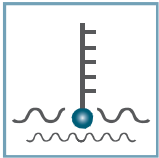
LL-



d [mm]  
14; 16; 20



C [daN]  
22; 24



T [°C]  
-



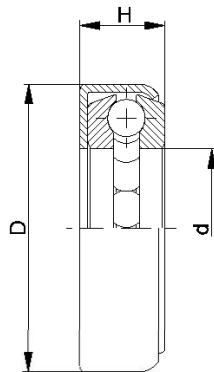
-



Carton [pcs.]




ø14: 200  
ø16: 200  
ø20: 350

# Pressed Thrust Bearings



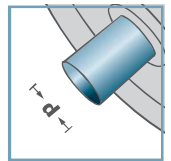
LL-				
Type	d	D	H	Load Rating C [daN]
LL-1.203	20,4	33,0	10,0	26
LL-1.223	22,4	43,5	12,0	26
LL-1.233	23,4	43,5	12,0	26
LL-1.243	24,4	43,5	12,0	26
LL-1.253	25,4	43,5	12,0	26
LL-1.263	26,4	43,5	12,0	26

#### Other dimensions on request!

-  Capsule: Steel
-  Ball Race: Steel, hardened
-  Ball: Steel



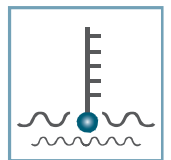
#### LL-



**d** [mm]  
20; 22; 23;  
24; 25; 26



**C** [daN]  
26



**T** [°C]  
-



-



**Carton** [pcs.]

ø20:	100
ø22:	50
ø23:	50
ø24:	50
ø25:	50
ø26:	50

# Pressed Thrust Bearings