

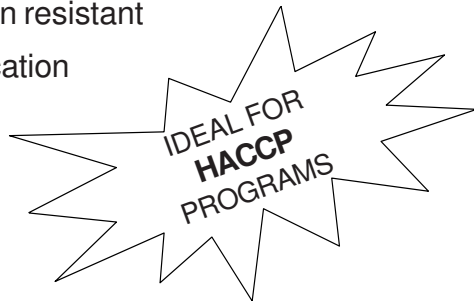


# ALL-ROUND<sup>®</sup> SOLUTION<sup>®</sup> MOUNTED BEARINGS



## Cast polymer bearing housings with All-Round<sup>®</sup> Supreme bearings

- Sanitary, easy to clean
- Corrosion resistant
- No lubrication
- Available in all styles and most sizes
- Interchanges with industry-standard bearings
- Non-magnetic



edtcorp.com  
edtsales@edtcorp.com

**EDT CORP**  
1006-J NE 146th Street  
Vancouver, WA 98685

PHONE 360-574-7294  
FAX 360-574-3834

# ALL-ROUND® SOLUTION®



## FEATURES AND BENEFITS:

- Sanitary and easy to clean.
- All mounting surfaces smooth and flat.
- Neutral gray housings and stainless bearing compliment all equipment.
- Full line of styles and sizes.
- Polymer housing withstand up to three times bearing load.
- Permanent unit. Very cost effective. Reusable many times.
- Only the flanged polymer bearing need to be replaced: Refer to Red Section F regarding ALL-ROUND® bearings.



3-piece ALL-ROUND® bearing



Arbor for polymer flanged bearing installation

## COST OF OWNERSHIP

### EDT "Solution® Bearings" versus ball bearings

### Mounted Ball Bearing Nickel plated two bolt, 1" bore

### All-Round® Solution® QB2GC9-1

	<u>1st Year</u>	<u>2nd Year</u>	<u>1st Year</u>	<u>2nd Year</u>
A. Price of bearing	\$ 50.00	\$ 50.00	\$ 144.00	\$ 27.00
B. Installation labor (1 hour @ \$30/hour*)	+ 30.00	+ 30.00	+ 30.00	+ 30.00
C. Number of bearing cycles per year (6 mo. use + 2/yr.)	x 2	x 2	x 1	x 1
D. Lubrication cycles/yr. (2 times/week @ \$1/cycle*)	+ 104.00	+ 104.00	+ -0-	+ -0-
<b>COST OF OWNERSHIP</b>	<b>\$ 264.00</b>	<b>\$ 264.00</b>	<b>\$ 174.00</b>	<b>\$ 57.00</b>

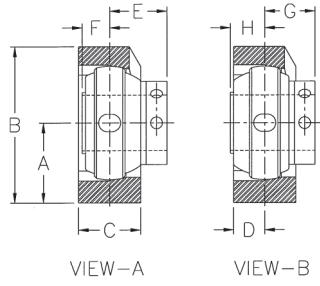
Formula: (A + B) x (C) + (D) = Annual cost of bearing

\*Includes wages, benefits, equipment, lubricant, cleanup, disposal, general administrative overhead. Does not include cost of machine downtime, product contamination, collateral damage, overtime and other costs of unscheduled delays caused by bearing failure.

For polymer housings see Section D (GRAY)  
For All-Round® Bearings see Section F (RED)

# ALL-ROUND® SOLUTION® MOUNTED TAPPED BASE PILLOW BLOCKS

Polymer housing with All-Round® Supreme Bearing



Mounting pattern interchanges with:

- |            |        |
|------------|--------|
| Dodge      | TB-SC  |
| MB         | TBC25  |
| Sealmaster | TB     |
| MRC        | CTB    |
| Hub City   | TPB250 |
| Linkbelt   | PT3    |



For optional bearing materials see page F-3 (RED)

MOUNTED SET P/N	Shaft Diameter		A	B	C	D	E	F	G	H	Wt. in lbs.	Replacement Polymer Flanged Bearing
	GROUP (RING)		in.	in.	in.	in.	in.	in.	in.	in.		
	mm	in.	mm	mm	mm	mm	mm	mm	mm	mm		
<b>QB9GA9-</b>	A (203)	1/2	1-5/16	2-1/2	1-5/16	21/32	63/64	3/8	25/32	9/16	.8	QBBUAO-A
12		9/16	33.3	63.5	33.3	16.7	25.0	9.5	19.8	14.3		
15		5/8										
17	11/16											
<b>QB9GB9-</b>	B (204)	1/2	1-5/16	2-5/8	1-7/16	23/32	63/64	1/2	59/64	9/16	.9	QBBUBO-B
12		9/16	33.3	66.7	36.5	18.3	25.0	12.7	23.4	14.3		
15		5/8										
17	11/16											
20	3/4											
13/16												
<b>QB9GC9-</b>	C (205)	13/16	1-7/16	2-15/16	1-7/16	23/32	1-3/64	1/2	59/64	5/8	1.0	QBBUCO-C
7/8		36.5	74.6	36.5	18.3	26.6	12.7	23.4	15.9			
15/16												
1												
<b>QB9GD9-</b>	D (206)	1	1-11/16	3-3/8	1-5/8	13/16	1-19/64	35/64	1-5/64	3/4	1.5	QBBUDO-D
1-1/16		42.9	85.7	41.3	20.6	32.9	13.9	27.4	19.1			
1-1/8												
1-3/16												
1-1/4												
<b>QB9GE9-</b>	E (207)	1-3/16	1-7/8	3-7/8	1-3/4	7/8	1-31/64	9/16	1-7/64	15/16	2.4	QBBUEO-E
1-1/4		47.6	98.4	44.5	22.2	37.7	14.3	28.2	23.8			
1-5/16												
1-3/8												
1-7/16												
<b>QB9GF9-</b>	F (208)	1-7/16	1-15/16	4-1/8	1-7/8	15/16	1-37/64	21/32	1-17/64	31/32	3.2	QBBUFO-F
1-1/2		49.2	104.8	47.6	23.8	40.1	16.7	32.1	24.6			
1-9/16												
1-5/8												
<b>QB9GG9-</b>	G (209)	1-1/2	2-1/8	4-3/8	2	1	1-41/64	21/32	1-17/64	1-1/32	3.8	QBBUGO-G
1-5/8		54.0	111.1	50.8	25.4	41.7	16.7	32.1	26.2			
1-11/16												
1-3/4												
<b>QB9GH9-</b>	H (210)	1-11/16	2-1/4	4-3/4	2-1/8	1-1/16	1-41/64	21/32	1-17/64	1-1/32	4.4	QBBUHO-H
1-3/4		57.2	120.7	54.0	27.0	41.7	16.7	32.1	26.2			
1-13/16												
1-7/8												
1-15/16												
2												
<b>QB9GI9-</b>	I (211)	1-15/16	2-1/4	4-7/8	2-5/16	1-5/32	1-51/64	11/16	1-19/64	1-3/16		QBBUIO-I
2		57.2	123.8	58.7	29.4	45.6	17.5	32.9	30.2			
2-1/16												
2-1/8												
2-3/16												
2-1/4												
<b>QF9GJ9-</b>	J (212)	2-3/16	2-3/4	5-3/4	2-7/16	1-7/32	2-1/16	23/32	1-21/64	1-13/32		QFBUJO-J
2-1/4		69.9	146.1	61.9	31.0	51.2	18.3	33.7	35.7			
2-5/16												
2-3/8												
2-7/16												
<b>QF9GK9-</b>	K (214)	2-7/16	3	6-3/8	2-1/2	1-1/4	2-7/64	13/16	1-39/64	1-5/16		QFBUKO-K
2-1/2		76.2	161.9	63.5	31.8	53.6	20.6	40.9	33.3			
2-5/8												
2-11/16												
2-3/4												
<b>QF9GL9-</b>	L (215)	2-11/16	3-1/2	7	2-7/8	1-7/16	2-3/64	7/8	1-43/64	1-1/4		QFBULO-L
2-3/4		88.9	177.8	73.0	36.5	52.0	22.2	42.5	31.8			
2-13/16												
2-7/8												
2-15/16												
3												

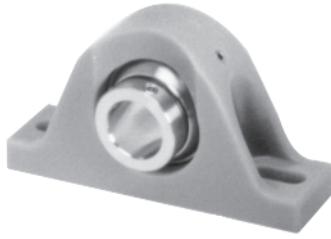
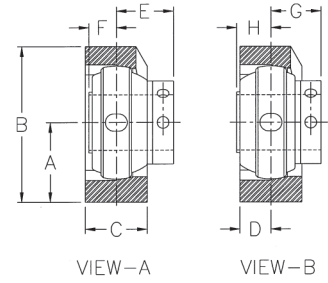
For housing dimensions .....see page D-3 (GREY)  
For All-Round® Bearings .....see page F-4 (RED)

# ALL-ROUND® SOLUTION® MOUNTED PILLOW BLOCKS - LOW BACKING HEIGHT

Polymer housing with All-Round® Supreme Bearing

With few exceptions, 10G mounting pattern interchanges with:

Dodge	P2B-SCB, -SXB
Fafnir	RAK, VAK
Sealmaster	NPL
Hub City	PB220, PB250
MB	CL-25



For optional bearing materials see page F-3 (RED)

MOUNTED SET P/N	Shaft Diameter		A	B	C	D	E	F	G	H	Wt. in lbs.	Replacement Polymer Flanged Bearing
	GROUP (RING)	mm	in.	in.	in.	in.	in.	in.	in.	in.		
QB10GA9-		1/2	--	--	--	--	--	--	--	--		QBBUAO-A
A (203)	12	9/16										
	15	5/8										
	17	11/16										
QB10GB9-		1/2	1-1/4	2-5/8	1-3/8	11/16	63/64	1/2	59/64	9/16	.9	QBBUBO-B
B (204)	12	9/16	31.8	66.7	34.9	17.5	25.0	12.7	23.4	14.3		
	15	5/8										
	17	11/16										
	20	13/16										
QB10GC9-		13/16	1-5/16	2-13/16	1-1/2	3/4	1-3/64	1/2	59/64	5/8	1.0	QBBUCO-C
C (205)	25	7/8	33.3	71.4	38.1	19.1	26.6	12.7	23.4	15.9		
		15/16										
		1										
QB10GD9-		1	1-9/16	3-5/16	1-3/4	7/8	1-19/64	35/64	1-5/64	3/4	1.7	QBBUDO-D
D (206)	30	1-1/16	39.7	84.1	44.5	22.2	32.9	13.9	27.4	19.1		
		1-1/8										
		1-3/16										
		1-1/4										
QB10GE9-		1-3/16	1-13/16	3-3/4	1-3/4	7/8	1-31/64	9/16	1-7/64	15/16	2.5	QBBUEO-E
E (207)	35	1-1/4	46.0	95.2	44.5	22.2	37.7	14.3	28.2	23.8		
		1-5/16										
		1-3/8										
		1-7/16										
QB10GF9-		1-7/16	1-15/16	4-1/16	1-15/16	31/32	1-37/64	21/32	1-17/64	31/32	3.4	QBBUFO-F
F (208)	40	1-1/2	49.2	103.2	49.2	24.6	40.1	16.7	32.1	24.6		
		1-1/2										
		1-9/16										
		1-5/8										
QB10GG9-		1-1/2	2-1/16	4-1/4	2	1	1-41/64	21/32	1-17/64	1-1/32	3.9	QBBUGO-G
G (209)	45	1-5/8	52.4	108.0	50.8	25.4	41.7	16.7	32.1	26.2		
		1-11/16										
		1-3/4										
		1-13/16										
		1-7/8										
		1-15/16										
		2										
QB10GI9-		1-15/16	2-7/16	5-1/16	2-3/8	1-3/16	1-51/64	11/16	1-19/64	1-3/16	5.6	QBBUIO-I
I (211)	55	2	61.9	128.6	60.3	30.2	45.6	17.5	32.9	30.2		
		2-1/16										
		2-1/8										
		2-3/16										
		2-1/4										
QF10GJ9-		2-3/16	2-11/16	5-9/16	2-1/2	1-1/4	2-1/16	23/32	1-21/64	1-13/32	7.0	QFBUJO-J
J (212)	60	2-1/4	68.3	141.3	63.5	31.8	51.2	18.3	33.7	35.7		
		2-5/16										
		2-3/8										
		2-7/16										
QF10GK9-		2-7/16	3-1/8	6-5/16	2-3/4	1-3/8	2-7/64	13/16	1-39/64	1-5/16		QFBUKO-K
K (214)	70	2-1/2	79.4	160.3	69.9	34.9	53.6	20.6	40.9	33.3		
		2-5/8										
		2-11/16										
		2-3/4										
QF10GL9-		2-11/16	3-1/4	6-9/16	2-7/8	1-7/16	2-3/64	7/8	1-43/64	1-1/4	10.2	QFBULO-L
L (215)	75	2-3/4	82.5	166.7	73.0	36.5	52.0	22.2	42.5	31.8		
		2-13/16										
		2-7/8										
		2-15/16										
		3										

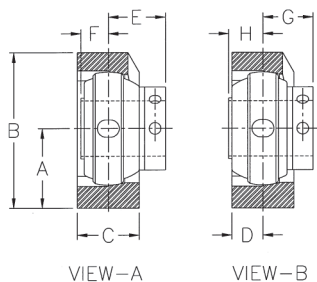
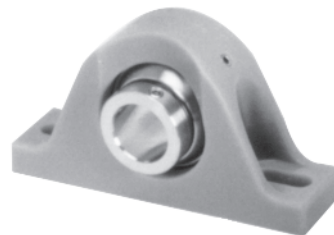
For HOUSING Dimensions .....see page D-4 (GREY)  
 For ALL-ROUND® Bearings .....see page F-4 (RED)

# ALL-ROUND® SOLUTION® MOUNTED PILLOW BLOCKS - STANDARD BACKING HEIGHT

## Polymer housing with All-Round® Supreme Bearing

With few exceptions, 1G- mounting pattern interchanges with:

Dodge	P2B-SC, -SCM
Fafnir	RAS, RASC
MB	C-25, C-35
Sealmaster	NP
MRC	CPB
Hub City	PB221, PB251
Linkbelt	P3-, KP-, KLP-S200
AMI	PPL



For optional bearing materials see page F-3 (RED)

MOUNTED SET P/N	Shaft Diameter		A	B	C	D	E	F	G	H	Wt. in lbs.	Replacement Polymer Flanged Bearing
	GROUP (RING)	mm	in.	in.	in.	in.	in.	in.	in.	in.		
<b>QB1GA9-</b> A (203)	12 15 17	1/2 9/16 5/8 11/16	1-1/16 27.0	2-1/4 57.2	1-1/4 31.8	5/8 15.9	63/64 25.0	3/8 9.5	25/32 19.8	9/16 14.3	.7	QBBUAO-A
<b>QB1GB9-</b> B (204)	12 15 17 20	1/2 9/16 5/8 11/16 3/4 13/16	1-5/16 33.3	2-11/16 68.3	1-3/8 34.9	11/16 17.5	63/64 25.0	1/2 12.7	59/64 23.4	9/16 14.3	.9	QBBUBO-B
<b>QB1GC9-</b> C (205)	25	13/16 7/8 15/16 1	1-7/16 36.5	2-15/16 74.6	1-1/2 38.1	3/4 19.1	1-3/64 26.6	1/2 12.7	59/64 23.4	5/8 15.9	1.1	QBBUCO-C
<b>QB1GD9-</b> D (206)	30	1 1-1/16 1-1/8 1-3/16 1-1/4	1-11/16 42.9	3-3/8 85.7	1-3/4 44.5	7/8 22.2	1-19/64 32.9	35/64 13.9	1-5/64 27.4	3/4 19.1	1.7	QBBUDO-D
<b>QB1GE9-</b> E (207)	35	1-3/16 1-1/4 1-5/16 1-3/8 1-7/16	1-7/8 47.6	3-7/8 98.4	1-3/4 44.5	7/8 22.2	1-31/64 37.7	9/16 14.3	1-7/64 28.2	15/16 23.8	2.5	QBBUEO-E
<b>QB1GF9-</b> F (208)	40	1-7/16 1-1/2 1-9/16 1-5/8	2-1/8 54.0	4-5/16 109.5	1-15/16 49.2	31/32 24.6	1-37/64 40.1	21/32 16.7	1-17/64 32.1	31/32 24.6	3.4	QBBUFO-F
<b>QB1GG9-</b> G (209)	45	1-1/2 1-5/8 1-11/16 1-3/4	2-1/8 54.0	4-3/8 111.1	2 50.8	1 25.4	1-41/64 41.7	21/32 16.7	1-17/64 32.1	1-1/32 26.2	3.9	QBBUGO-G
<b>QB1GH9-</b> H (210)	50	1-11/16 1-3/4 1-13/16 1-7/8 1-15/16 2	2-1/4 57.2	4-5/8 117.5	2-1/4 57.2	1-1/8 28.6	1-41/64 41.7	21/32 16.7	1-17/64 32.1	1-1/32 26.2	4.2	QBBUHO-H
<b>QB1GI9-</b> I (211)	55	1-15/16 2 2-1/16 2-1/8 2-3/16 2-1/4	2-1/2 63.5	5-1/8 130.2	2-3/8 60.3	1-3/16 30.2	1-51/64 45.6	11/16 17.5	1-19/64 32.9	1-3/16 30.2	5.6	QBBUIO-I
<b>QF1GJ9-</b> J (212)	60	2-3/16 2-1/4 2-5/16 2-3/8 2-7/16	2-3/4 69.9	5-1/2 139.7	2-1/2 63.5	1-1/4 31.8	2-1/16 51.2	23/32 18.3	1-21/64 33.7	1-13/32 35.7	7.0	QFBUJO-J
<b>QF1GK9-</b> K (214)	70	2-7/16 2-1/2 2-5/8 2-11/16 2-3/4	3 76.2	6-1/4 158.7	2-3/4 69.9	1-3/8 34.9	2-7/64 53.6	13/16 20.6	1-39/64 40.9	1-5/16 33.3	9.8	QFBUKO-K
<b>QF1GL9-</b> L (215)	75	2-11/16 2-3/4 2-13/16 2-7/8 2-15/16 3	3-1/2 88.9	6-7/8 174.6	2-7/8 73.0	1-7/16 36.5	2-3/64 52.0	7/8 22.2	1-43/64 42.5	1-1/4 31.8	10.2	QFBULO-L

For housing dimensions .....see page D-5 (GREY)  
For All-Round® Bearings .....see page F-4 (RED)

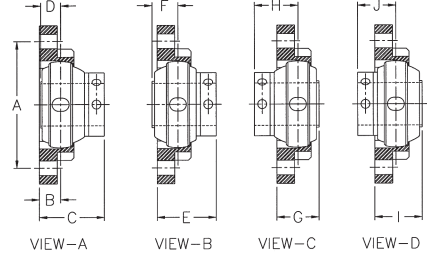
# ALL-ROUND® SOLUTION® MOUNTED SMALL TWO-BOLT FLANGE BEARINGS

Polymer housing with All-Round® Supreme Bearing



Mounting pattern interchanges with:

Dodge	LFT-SC
Fafnir	RAT
MB	FBS2-25
Hub City	FB160
Linkbelt	FX



For optional bearing materials see page F-3 (RED)

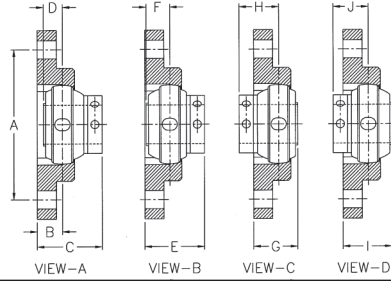
MOUNTED SET P/N	Shaft Diameter		A	B	C	D	E	F	G	H	I	J	Wt. in lbs.	Replacement Polymer Flanged Bearing
	GROUP (RING)	mm	in.	in.	in.	in.	in.	in.	in.	in.	in.	in.		
<b>QB6GA9-</b> A (203)	12 15 17	1/2 9/16 5/8 11/16	2-1/2 63.5	27/64 10.7	1-25/64 35.3	3/8 9.5	1-27/32 31.0	9/16 14.3	51/64 20.2	63/64 25.0	63/64 25.0	25/32 19.8	.6	QBBUAO-A
<b>QB6GB9-</b> B (204)	12 15 17 20	1/2 9/16 5/8 11/16 3/4 13/16	2-13/16 71.4	1/2 12.7	1-31/64 37.7	1/2 12.7	1-27/64 36.1	9/16 14.3	1 25.4	63/64 25.0	1-1/16 27.0	59/64 23.4	.7	QBBUBO-B
<b>QB6GC9-</b> C (205)	25	13/16 7/8 15/16 1	3 76.2	1/2 12.7	1-35/64 39.3	1/2 12.7	1-27/64 36.1	5/8 15.9	1 25.4	1-3/64 26.6	1-1/8 28.6	59/64 23.4	.8	QBBUCO-C
<b>QB6GD9-</b> D (206)	30	1 1-1/16 1-1/8 1-3/16 1-1/4	3-9/16 90.5	9/16 14.3	1-55/64 47.2	35/64 13.9	1-41/64 41.7	3/4 19.1	1-7/64 28.2	1-19/64 32.9	1-21/64 33.7	1-5/64 27.4	1.3	QBBUDO-D
<b>QB6GE9-</b> E (207)	35	1-3/16 1-1/4 1-5/16 1-3/8 1-7/16	3-15/16 100.0	9/16 14.3	2-1/32 51.6	9/16 14.3	1-43/64 42.5	15/16 23.8	1-1/8 28.6	1-31/64 37.7	1-1/2 38.1	1-7/64 28.2	1.7	QBBUEO-E

Round bolt holes are standard.  
Square bolt holes are available - if required, please call for price and lead time.

For housing dimensions .....see page D-6 (GREY)  
For All-Round® Bearings .....see page F-4 (RED)

# ALL-ROUND® SOLUTION® MOUNTED TWO-BOLT FLANGE BEARINGS

Polymer housing with All-Round® Supreme Bearing



Mounting pattern interchanges with:

Dodge	F2B-SC, -SCM, -VSC
Fafnir	RCJT
Sealmaster	SFT
MRC	C2F
MB	FC2-25, FC2-35
Hub City	FB230, FB260
Linkbelt	FX3-, KFX-, KLFX-S200
AMI	NFL



For optional bearing materials see page F-3 (RED)

MOUNTED SET P/N	Shaft Diameter		A	B	C	D	E	F	G	H	I	J	Wt. in lbs.	Replacement Polymer Flanged Bearing
	GROUP (RING)	mm	in.	in.	in.	in.	in.	in.	in.	in.	in.	in.		
<b>QB2GA9-</b> A (203)	12 15 17	1/2 9/16 5/8 11/16	3 76.2	37/64 14.7	1-9/16 39.7	3/8 9.5	1-23/64 34.5	9/16 14.3	61/64 24.2	63/64 25.0	1-9/64 29.0	25/32 19.8	.5	QBBUAO-A
<b>QB2GB9-</b> B (204)	12 15 17 20	1/2 9/16 5/8 11/16 3/4 13/16	3-17/32 89.7	19/32 15.1	1-37/64 40.1	1/2 12.7	1-33/64 38.5	9/16 14.3	1-3/32 27.8	63/64 25.0	1-5/32 29.4	59/64 23.4	.8	QBBUBO-B
<b>QB2GC9-</b> C (205)	25	13/16 7/8 15/16 1	3-57/64 98.8	21/32 16.7	1-45/64 43.3	1/2 12.7	1-37/64 40.1	5/8 15.9	1-5/32 29.4	1-3/64 26.6	1-9/32 32.5	59/64 23.4	.9	QBBUCO-C
<b>QB2GD9-</b> D (206)	30	1 1-1/16 1-1/8 1-3/16 1-1/4	4-19/32 116.7	43/64 17.1	1-31/32 35.7	35/64 13.9	1-3/4 44.5	3/4 19.1	1-7/32 31.0	1-19/64 32.9	1-7/16 36.5	1-5/64 27.4	1.5	QBBUDO-D
<b>QB2GE9-</b> E (207)	35	1-3/16 1-1/4 1-5/16 1-3/8 1-7/16	5-1/8 130.2	53/64 21.0	2-5/16 58.7	9/16 14.3	1-15/16 49.2	15/16 23.8	1-25/64 35.3	1-31/64 37.7	1-49/64 44.8	1-7/64 28.2	1.9	QBBUEO-E
<b>QB2GF9-</b> F (208)	40	1-7/16 1-1/2 1-9/16 1-5/8	5-21/32 143.7	27/32 21.4	2-27/64 61.5	21/32 16.7	2-7/64 53.6	31/32 24.6	1-1/2 38.1	1-37/64 40.1	1-13/16 46.0	1-17/64 32.1	3.1	QBBUFO-F
<b>QB2GG9-</b> G (209)	45	1-1/2 1-5/8 1-11/16 1-3/4	5-27/32 148.4	27/32 21.4	2-31/64 63.1	21/32 16.7	2-7/64 53.6	1-1/32 26.2	1-1/2 38.1	1-41/64 41.7	1-7/8 47.6	1-17/64 32.1	3.5	QBBUGO-G
<b>QB2GH9-</b> H (210)	50	1-11/16 1-3/4 1-13/16 1-7/8 1-15/16 2	6-3/16 157.2	27/32 21.4	2-31/64 63.1	21/32 16.7	2-7/64 53.6	1-1/32 26.2	1-1/2 38.1	1-41/64 41.7	1-7/8 47.6	1-17/64 32.1	4.0	QBBUHO-H
<b>QB2GI9-</b> I (211)	55	1-15/16 2 2-1/16 2-1/8 2-3/16 2-1/4	7-1/4 184.2	31/32 24.6	2-49/64 70.2	11/16 17.5	2-17/64 57.5	1-3/16 30.2	1-21/32 42.1	1-51/64 45.6	2-5/32 54.8	1-19/64 32.9	5.6	QBBUIO-I
<b>QF2GJ9-</b> J (212)	60	2-3/16 2-1/4 2-5/16 2-3/8 2-7/16	7-61/64 202.0	1-7/64 28.2	3-1/8 79.4	23/32 18.3	2-7/16 61.9	1-13/32 35.7	1-53/64 46.4	2-1/16 51.2	2-33/64 63.9	1-21/64 33.7	6.8	QFBUJO-J
<b>QF2GK9-</b> K (214)	70	2-7/16 2-1/2 2-5/8 2-11/16 2-3/4	8-5/16 211.1	1-9/32 32.5	3-25/64 86.1	13/16 20.6	2-57/64 73.4	1-5/16 33.3	2-3/32 53.2	2-7/64 53.6	2-19/32 65.9	1-39/64 40.9		QFBUKO-K
<b>QF2GL9-</b> L (215)	75	2-11/16 2-3/4 2-13/16 2-7/8 2-15/16 3	8-1/2 215.9	1-13/32 35.7	3-29/64 87.7	7/8 22.2	3-5/64 78.2	1-1/4 31.8	2-9/32 57.9	2-3/64 52.0	2-21/32 67.5	1-43/64 42.5	9.1	QFBULO-L

For housing dimensions .....see page D-7 (GREY)  
For All-Round® Bearings .....see page F-4 (RED)

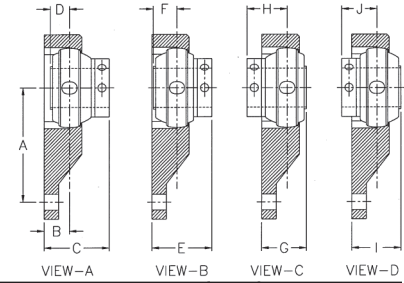
# ALL-ROUND® SOLUTION® MOUNTED THREE-BOLT EXTENSION FLANGE BEARINGS

Polymer housing with All-Round® Supreme Bearing



Mounting pattern interchanges with:

- |            |       |
|------------|-------|
| Dodge      | FB-SC |
| Sealmaster | FB    |
| MRC        | C3F   |
| MB         | MFB   |
| Linkbelt   | FB3   |



For optional bearing materials see page F-3 (RED)

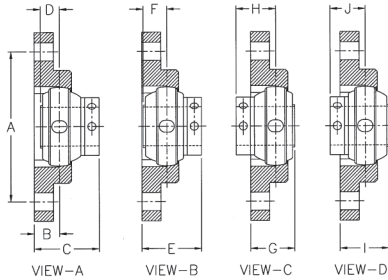
MOUNTED SET P/N GROUP (RING)	Shaft Diameter		A	B	C	D	E	F	G	H	I	J	Wt. in lbs.	Replacement Polymer Flanged Bearing
	mm	in.	in. mm	in. mm	in. mm	in. mm	in. mm	in. mm	in. mm	in. mm	in. mm	in. mm		
QB3GA9- A (203)	12	1/2	2-3/16	37/64	1-9/16	3/8	1-23/64	9/16	61/64	63/64	1-9/64	25/32	.5	QBBUAO-A
	15	9/16	55.5	14.7	39.7	9.5	34.5	14.3	24.2	25.0	29.0	19.8		
	17	5/8												
QB3GB9- B (204)	12	1/2	2-9/16	19/32	1-37/64	1/2	1-33/64	9/16	1-3/32	63/64	1-5/32	59/64	.7	QBBUBO-B
	15	9/16	65.1	15.1	40.1	12.7	38.5	14.3	27.8	25.0	29.4	23.4		
	17	5/8												
QB3GC9- C (205)	15	13/16	2-15/16	21/32	1-45/64	1/2	1-37/64	5/8	1-5/32	1-3/64	1-9/32	59/64	1.0	QBBUCO-C
	17	7/8	74.6	16.7	43.3	12.7	40.1	15.9	29.4	26.6	32.5	23.4		
	20	15/16												
QB3GD9- D (206)	17	1	3-5/16	43/64	1-31/32	35/64	1-3/4	3/4	1-7/32	1-19/64	1-7/16	1-5/64	1.7	QBBUDO-D
	30	1-1/16	84.1	17.1	35.7	13.9	44.5	19.1	31.0	32.9	36.5	27.4		
		1-1/8												
QB3GE9- E (207)	35	1-3/16	3-5/8	53/64	2-5/16	9/16	1-15/16	15/16	1-25/64	1-31/64	1-49/64	1-7/64	2.4	QBBUEO-E
		1-1/4	92.1	21.0	58.7	14.3	49.2	23.8	35.3	37.7	44.8	28.2		
		1-5/16												
QB3GF9- F (208)	40	1-7/16	3-15/16	27/32	2-27/64	21/32	2-7/64	31/32	1-1/2	1-37/64	1-13/16	1-17/64	3.1	QBBUFO-F
		1-1/2	100.0	21.4	61.5	16.7	53.6	24.6	38.1	40.1	46.0	32.1		
		1-9/16												
QB3GG9- G (209)	45	1-1/2	4-1/4	27/32	2-31/64	21/32	2-7/64	1-1/32	1-1/2	1-41/64	1-7/8	1-17/64	3.1	QBBUGO-G
		1-5/8	108.0	21.4	63.1	16.7	53.6	26.2	38.1	41.7	47.6	32.1		
		1-11/16												
QB3GH9- H (210)	50	1-11/16	4-9/16	27/32	2-31/64	21/32	2-7/64	1-1/32	1-1/2	1-41/64	1-7/8	1-17/64	4.1	QBBUHO-H
		1-3/4	115.9	21.4	63.1	16.7	53.6	26.2	38.1	41.7	47.6	32.1		
		1-13/16												
QB3GI9- I (211)	55	1-15/16	4-7/8	31/32	2-49/64	11/16	2-17/64	1-3/16	1-21/32	1-51/64	2-5/32	1-19/64	5.6	QBBUIO-I
		2	123.8	24.6	70.2	17.5	57.5	30.2	42.1	45.6	54.8	32.9		
		2-1/16												
QF3GJ9- J (212)	60	2-3/16	5-3/8	1-7/64	3-1/8	23/32	2-7/16	1-13/32	1-53/64	2-1/16	2-33/64	1-21/64	7.0	QFBUJO-J
		2-1/4	136.5	28.2	79.4	18.3	61.9	35.7	46.4	51.2	63.9	33.7		
		2-5/16												
QF3GK9- K (214)	70	2-7/16	6-1/8	1-9/32	3-25/64	13/16	2-57/64	1-5/16	2-3/32	2-7/64	2-19/32	1-39/64	7.0	QFBUKO-K
		2-1/2	155.6	32.5	86.1	20.6	73.4	33.3	53.2	53.6	65.9	40.9		
		2-5/8												
QF3GL9- L (215)	75	2-11/16	6-5/8	1-13/32	3-29/64	7/8	3-5/64	1-1/4	2-9/32	2-3/64	2-21/32	1-43/64	7.0	QFBULO-L
		2-3/4	168.3	35.7	87.7	22.2	78.2	31.8	57.9	52.0	67.5	42.5		
		2-13/16												

For housing dimensions .....see page D-8 (GREY)  
For All-Round® Bearings .....see page F-4 (RED)



# ALL-ROUND® SOLUTION® MOUNTED FOUR-BOLT FLANGE BEARINGS

## Polymer housing with All-Round® Supreme Bearing



Mounting pattern interchanges with:

Dodge	FB4-SC, -SCM, -VSC
Fafnir	RCJ
Sealmaster	SF
Hub City	CF4
MRC	C4F
MB	FC4-25, -35
AMI	FPL
Linkbelt	F3-, KF-, KFL-S200



For optional bearing materials see page F-3 (RED)

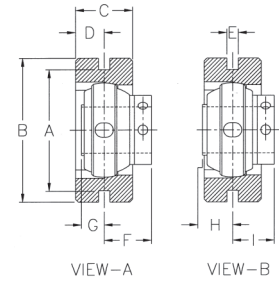
MOUNTED SET P/N	Shaft Diameter		A	B	C	D	E	F	G	H	I	J	Wt. in lbs.	Replacement Polymer Flanged Bearing
	GROUP (RING)	mm	in.	in.	in.	in.	in.	in.	in.	in.	in.	in.		
<b>QB4GA9-</b>	A (203)	1/2	2-1/8	37/64	1-9/16	3/8	1-23/64	9/16	61/64	63/64	1-9/64	25/32	.6	QBBUAO-A
		9/16	54.0	14.7	39.7	9.5	34.5	14.3	24.2	25.0	29.0	19.8		
		5/8												
	11/16													
<b>QB4GB9-</b>	B (204)	1/2	2-1/2	19/32	1-37/64	1/2	1-33/64	9/16	1-3/32	63/64	1-5/32	59/64	.8	QBBUBO-B
		9/16	63.5	15.1	40.1	12.7	38.5	14.3	27.8	25.0	29.4	23.4		
		5/8												
	11/16													
	3/4													
	13/16													
<b>QB4GC9-</b>	C (205)	7/8	2-3/4	21/32	1-45/64	1/2	1-37/64	5/8	1-5/32	1-3/64	1-9/32	59/64	1.0	QBBUCO-C
		15/16	69.9	16.7	43.3	12.7	40.1	15.9	29.4	26.6	32.5	23.4		
		1												
<b>QB4GD9-</b>	D (206)	1	3-1/4	43/64	1-31/32	35/64	1-3/4	3/4	1-7/32	1-19/64	1-7/16	1-5/64	1.7	QBBUDO-D
		1-1/16	82.6	17.1	35.7	13.9	44.5	19.1	31.0	32.9	36.5	27.4		
		1-1/8												
	1-3/16													
	1-1/4													
<b>QB4GE9-</b>	E (207)	1-3/16	3-5/8	53/64	2-5/16	9/16	1-15/16	15/16	1-25/64	1-31/64	1-49/64	1-7/64	2.4	QBBUEO-E
		1-1/4	92.1	21.0	58.7	14.3	49.2	23.8	35.3	37.7	44.8	28.2		
		1-5/16												
	1-3/8													
	1-7/16													
<b>QB4GF9-</b>	F (208)	1-7/16	4	27/32	2-27/64	21/32	2-7/64	31/32	1-1/2	1-37/64	1-13/16	1-17/64	3.2	QBBUFO-F
		1-1/2	101.6	21.4	61.5	16.7	53.6	24.6	38.1	40.1	46.0	32.1		
		1-9/16												
	1-5/8													
<b>QB4GG9-</b>	G (209)	1-1/2	4-1/8	27/32	2-31/64	21/32	2-7/64	1-1/32	1-1/2	1-41/64	1-7/8	1-17/64	3.8	QBBUGO-G
		1-5/8	104.8	21.4	63.1	16.7	53.6	26.2	38.1	41.7	47.6	32.1		
		1-11/16												
	1-3/4													
<b>QB4GH9-</b>	H (210)	1-11/16	4-3/8	27/32	2-31/64	21/32	2-7/64	1-1/32	1-1/2	1-41/64	1-7/8	1-17/64	4.0	QBBUHO-H
		1-3/4	111.1	21.4	63.1	16.7	53.6	26.2	38.1	41.7	47.6	32.1		
		1-13/16												
	1-7/8													
	1-15/16													
	2													
<b>QB4GI9-</b>	I (211)	1-15/16	5-1/8	31/32	2-49/64	11/16	2-17/64	1-3/16	1-21/32	1-51/64	2-5/32	1-19/64	5.0	QBBUIO-I
		2	130.2	24.6	70.2	17.5	57.5	30.2	42.1	45.6	54.8	32.9		
		2-1/16												
	2-1/8													
	2-3/16													
	2-1/4													
<b>QF4GJ9-</b>	J (212)	2-3/16	5-5/8	1-7/64	3-1/8	23/32	2-7/16	1-13/32	1-53/64	2-1/16	2-33/64	1-21/64	7.0	QFBUJO-J
		2-1/4	142.9	28.2	79.4	18.3	61.9	35.7	46.4	51.2	63.9	33.7		
		2-5/16												
	2-3/8													
	2-7/16													
<b>QF4GK9-</b>	K (214)	2-7/16	5-7/8	1-9/32	3-25/64	13/16	2-57/64	1-5/16	2-3/32	2-7/64	2-19/32	1-39/64	9.2	QFBUKO-K
		2-1/2	149.2	32.5	86.1	20.6	73.4	33.3	53.2	53.6	65.9	40.9		
		2-5/8												
	2-11/16													
	2-3/4													
<b>QF4GL9-</b>	L (215)	2-11/16	6	1-13/32	3-29/64	7/8	3-5/64	1-1/4	2-9/32	2-3/64	2-21/32	1-43/64	9.5	QFBULO-L
		2-3/4	152.4	35.7	87.7	22.2	78.2	31.8	57.9	52.0	67.5	42.5		
		2-13/16												
	2-7/8													
	2-15/16													
	3													

For housing dimensions .....see page D-9 (GREY)  
For All-Round® Bearings .....see page F-4 (RED)

# ALL-ROUND® SOLUTION® MOUNTED NARROW SLOT TAKE-UP BEARINGS

Polymer housing with All-Round® Supreme Bearing

Mounting pattern interchanges with:  
 Dodge NSTU-SC, -SCM, -VSC  
 Hub City TU



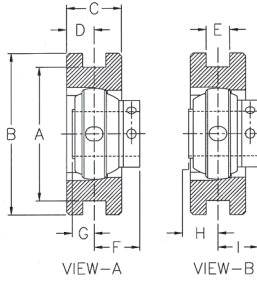
For optional bearing materials see page F-3 (RED)

MOUNTED SET P/N	Shaft Diameter		A	B	C	D	E	F	G	H	I	Wt. in lbs.	Replacement Polymer Flanged Bearing
	GROUP (RING)	mm	in.	in.	in.	in.	in.	in.	in.	in.	in.		
<b>QB5GA9-</b>	A (203)	12	1/2	2	2-1/2	1	1/2	1/4	63/64	3/8	9/16	25/32	QBBUAO-A
		15	9/16	50.8	63.5	25.4	12.7	6.4	25.0	9.5	14.3	19.8	
		17	5/8										
<b>QB5GB9-</b>	B (204)	12	1/2	2-5/8	3-1/8	1-3/8	11/16	1/4	63/64	1/2	9/16	59/64	QBBUBO-B
		15	9/16	66.7	79.4	34.9	17.5	6.4	25.0	12.7	14.3	23.4	
		17	5/8										
<b>QB5GC9-</b>	C (205)	17	13/16	2-5/8	3-1/8	1-3/8	11/16	1/4	1-3/64	1/2	5/8	59/64	QBBUCO-C
		20	7/8	66.7	79.4	34.9	17.5	6.4	26.6	12.7	15.9	23.4	
		25	15/16										
<b>QB5GD9-</b>	D (206)	30	1	3-1/2	4-1/8	1-3/8	11/16	1/4	1-19/64	35/64	3/4	1-5/64	QBBUDO-D
			1-1/16	88.9	104.8	34.9	17.5	6.4	32.9	13.9	19.1	27.4	
			1-1/8										
<b>QB5GE9-</b>	E (207)	35	1-3/16	3-1/2	4-1/8	1-3/8	11/16	1/4	1-31/64	9/16	15/16	1-7/64	QBBUEO-E
			1-1/4	88.9	104.8	34.9	17.5	6.4	37.7	14.3	23.8	28.2	
			1-5/16										
<b>QB5GF9-</b>	F (208)	40	1-7/16	4	4-3/4	1-5/8	13/16	5/16	1-37/64	21/32	31/32	1-17/64	QBBUFO-F
			1-1/2	101.6	120.7	41.3	20.6	7.9	40.1	16.7	24.6	32.1	
			1-9/16										
<b>QB5GG9-</b>	G (209)	45	1-1/2	4	4-3/4	1-5/8	13/16	5/16	1-41/64	21/32	1-1/32	1-17/64	QBBUGO-G
			1-5/8	101.6	120.7	41.3	20.6	7.9	41.7	16.7	26.2	32.1	
			1-11/16										
<b>QB5GH9-</b>	H (210)	50	1-11/16	4	4-3/4	1-5/8	13/16	5/16	1-41/64	21/32	1-1/32	1-17/64	QBBUHO-H
			1-3/4	101.6	120.7	41.3	20.6	7.9	41.7	16.7	26.2	32.1	
			1-13/16										
<b>QB5GI9-</b>	I (211)	55	1-15/16	4-7/16	5-3/8	1-3/4	7/8	5/16	1-51/64	11/16	1-3/16	1-19/64	QBBUIO-I
			2	112.7	136.1	44.5	22.2	7.9	45.6	17.5	30.2	32.9	
			2-1/16										
<b>QF5GJ9-</b>	J (212)	60	2-3/16	4-15/16	5-3/4	1-3/4	7/8	5/16	2-1/16	23/32	1-13/32	1-21/64	QFBUJO-J
			2-1/4	125.4	146.1	44.5	22.2	7.9	51.2	18.3	35.7	33.7	
			2-5/16										
<b>QF5GK9-</b>	K (214)	70	2-7/16	5-1/2	6-3/8	2	1	3/8	2-7/64	13/16	1-5/16	1-39/64	QFBUKO-K
			2-1/2	139.7	161.9	50.8	25.4	9.5	53.6	20.6	33.3	40.9	
			2-5/8										
<b>QF5GL9-</b>	L (215)	75	2-11/16	5-7/8	6-3/4	2	1	3/8	2-3/64	7/8	1-1/4	1-43/64	QFBULO-L
			2-3/4	149.2	171.5	50.8	25.4	9.5	52.0	22.2	31.8	42.5	
			2-13/16										

For housing dimensions .....see page D-10 (GREY)  
 For All-Round® Bearings .... see page F-4 (RED)

# ALL-ROUND® SOLUTION® MOUNTED WIDE SLOT TAKE-UP BEARINGS

Polymer housing with All-Round® Supreme Bearing



Mounting pattern interchanges with:  
 Dodge WSTU-SC, -SCM, -VSC  
 Fafnir RTU  
 Sealmaster ST  
 AMI TPL  
 Hub City WSTU-220, -250

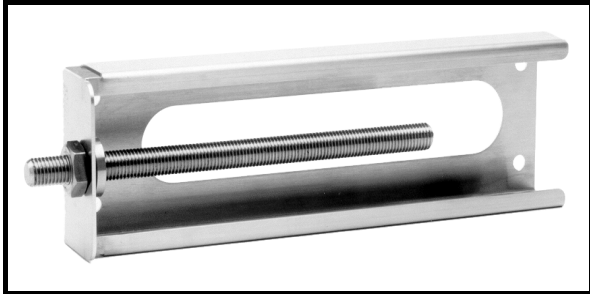


For optional bearing materials see page F-3 (RED)

MOUNTED SET P/N	Shaft Diameter		A	B	C	D	E	F	G	H	I	Wt. in lbs.	Replacement Polymer Flanged Bearing
	GROUP (RING)	mm	in.	in.	in.	in.	in.	in.	in.	in.	in.		
<b>QB7GA9-</b> A (203)	12 15 17	1/2 9/16 5/8 11/16	2-1/2 63.5	3 76.2	1-1/8 28.6	9/16 14.3	13/32 10.3	63/64 25.0	3/8 9.5	9/16 14.3	25/32 19.8		QBBUAO-A
<b>QB7GB9-</b> B (204)	12 15 17 20	1/2 9/16 5/8 11/16 3/4 13/16	3 76.2	3-5/8 92.1	1-3/8 34.9	11/16 17.5	17/32 13.5	63/64 25.0	1/2 12.7	9/16 14.3	59/64 23.4	1.0	QBBUBO-B
<b>QB7GC9-</b> C (205)	25	13/16 7/8 15/16 1	3 76.2	3-5/8 92.1	1-3/8 34.9	11/16 17.5	17/32 13.5	1-3/64 26.6	1/2 12.7	5/8 15.9	59/64 23.4	1.2	QBBUCO-C
<b>QB7GD9-</b> D (206)	30	1 1-1/16 1-1/8 1-3/16 1-1/4	3-1/2 88.9	4-1/8 104.8	1-5/8 41.3	13/16 20.6	17/32 13.5	1-19/64 32.9	35/64 13.9	3/4 19.1	1-5/64 27.4	1.9	QBBUDO-D
<b>QB7GE9-</b> E (207)	35	1-3/16 1-1/4 1-5/16 1-3/8 1-7/16	3-1/2 88.9	4-1/8 104.8	1-5/8 41.3	13/16 20.6	17/32 13.5	1-31/64 37.7	9/16 14.3	15/16 23.8	1-7/64 28.2	2.4	QBBUEO-E
<b>QB7GF9-</b> F (208)	40	1-7/16 1-1/2 1-9/16 1-5/8	4 101.6	4-1/2 114.3	1-15/16 49.2	31/32 24.6	11/16 17.5	1-37/64 40.1	21/32 16.7	31/32 24.6	1-17/64 32.1	3.6	QBBUFO-F
<b>QB7GG9-</b> G (209)	45	1-1/2 1-5/8 1-11/16 1-3/4	4 101.6	4-5/8 117.5	1-15/16 49.2	31/32 24.6	11/16 17.5	1-41/64 41.7	21/32 16.7	1-1/32 26.2	1-17/64 32.1	4.2	QBBUGO-G
<b>QB7GH9-</b> H (210)	50	1-11/16 1-3/4 1-13/16 1-7/8 1-15/16 2	4 101.6	4-3/4 120.7	1-15/16 49.2	31/32 24.6	11/16 17.5	1-41/64 41.7	21/32 16.7	1-1/32 26.2	1-17/64 32.1	4.4	QBBUHO-H
<b>QB7GI9-</b> I (211)	55	1-15/16 2 2-1/16 2-1/8 2-3/16 2-1/4	5-1/8 130.2	5-7/8 149.2	2-1/2 63.5	1-1/4 31.8	1-1/16 27.0	1-51/64 45.6	11/16 17.5	1-3/16 30.2	1-19/64 32.9	7.1	QBBUIO-I
<b>QF7GJ9-</b> J (212)	60	2-3/16 2-1/4 2-5/16 2-3/8 2-7/16	5-1/8 130.2	5-7/8 149.2	2-1/2 63.5	1-1/4 31.8	1-1/16 27.0	2-1/16 51.2	23/32 18.3	1-13/32 35.7	1-21/64 33.7	7.6	QFBUJO-J
<b>QF7GK9-</b> K (214)	70	2-7/16 2-1/2 2-5/8 2-11/16 2-3/4	5-15/16 150.8	6-11/16 169.9	2-3/4 69.9	1-3/8 34.9	1-1/16 27.0	2-7/64 53.6	13/16 20.6	1-5/16 33.3	1-39/64 40.9		QFBUKO-K
<b>QF7GL9-</b> L (215)	75	2-11/16 2-3/4 2-13/16 2-7/8 2-15/16 3	5-15/16 150.8	6-11/16 169.9	2-3/4 69.9	1-3/8 34.9	1-1/16 27.0	2-3/64 52.0	7/8 22.2	1-1/4 31.8	1-43/64 42.5	10.9	QFBULO-L

For housing dimensions ....see page D-11 (GREY)  
 For All-Round® Bearings ...see page F-4 (RED)

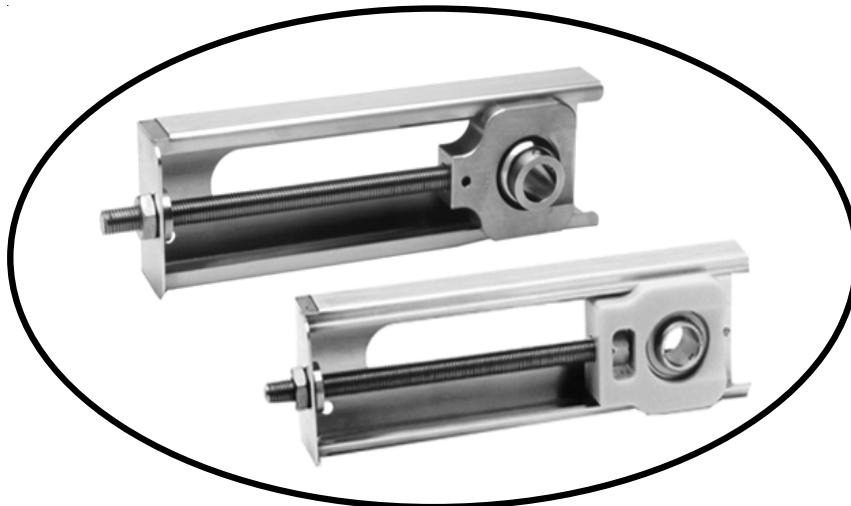
# Stainless Steel Take-up Frames in stock at EDT



- Corrosion Resistant
- Industry interchangeable
- Wide and narrow slot
- Sanitary
- Bolt on / weld on



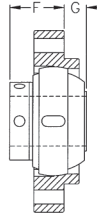
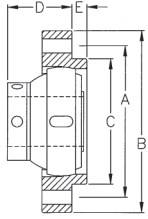
See Section S / Light Blue for additional information



Use with EDT polymer or stainless mounted take-up assemblies  
or bearings from any other manufacturer

# ALL-ROUND® SOLUTION® MOUNTED PILOTED FLANGE BEARING

## Polymer housing with All-Round® Supreme Bearing



VIEW-A

VIEW-B

Mounting pattern interchanges with:

- MB PFC4-25, PFC4-35
- Hub City FC350
- Dodge FC-SC♦, FC-SCM
- Sealmaster SFC, MFC
- Fafnir RFC



P/N GROUP (RING)	Shaft Diameter		A	B	C	D	E	F	G	Wt. in lbs.	Replacement Polymer Flanged Bearing
	in.		in.	in.	in.	in.	in.	in.	in.		
			mm	mm	mm	mm	mm	mm	mm		
<b>QB24GC9-</b> C (205) 2.047 52	25	13/16 7/8 15/16 1	3-5/8 92.1	4-3/8 111.1	3 76.2	1-25/64 35.3	3/8 9.5	1-3/16 30.1	3/8 9.5	1.3	QBBUCO-C
<b>QB24GD9-</b> D (206) 2.441 62		1 1-1/16 1-1/8 1-3/16 1-1/4	3-5/8 92.1	4-3/8 111.1	3 76.2	1-41/64 41.6	3/8 9.5	1-27/64 36.1	13/32 10.3	1.7	QBBUDO-D
<b>QB24GE9-</b> E (207) 2.835 72	35	1-3/16 1-1/4 1-5/16 1-3/8 1-7/16	4-1/8 104.8	5 127.0	3-3/8 85.7	1-53/64 46.4	3/8 9.5	1-29/64 36.9	19/32 15.1	2.4	QBBUEO-E
<b>QB24GF9-</b> F (208) 3.150 80		1-7/16 1-1/2 1-9/16 1-5/8	4-3/8 111.1	5-1/4 133.4	3-5/8 92.1	1-15/16 49.2	7/16 11.1	1-39/64 40.9	5/8 15.9	3.3	QBBUFO-F
<b>QB24GG9-</b> G (209) 3.346 85	45	1-1/2 1-5/8 1-11/16 1-3/4	4-3/8 111.1	5-1/4 133.4	3-5/8 92.1	1-63/64 50.4	7/16 11.1	1-39/64 40.9	11/16 17.4	3.5	QBBUGO-G
<b>*QB24GG/DSC9-♦</b> G (209) 3.346 85		1-1/2 1-5/8 1-11/16 1-3/4	4-3/4 120.65	5-3/4 146.1	4 101.6	1-63/64 50.4	7/16 11.1	1-39/64 40.9	11/16 17.4	3.7	QBBUGO-G
<b>QB24GH9-</b> H (210) 3.543 90	50	1-11/16 1-3/4 1-13/16 1-7/8 1-15/16 2	5-1/8 130.2	6-1/8 155.6	4-1/4 108.0	1-7/8 47.6	5/8 15.9	1-39/64 40.9	51/64 20.2	4.1	QBBUHO-H
<b>QB24GI9-</b> I (211) 3.937 100		1-15/16 2 2-1/16 2-1/8 2-3/16 2-1/4	5-3/8 136.5	6-3/8 161.9	4-1/2 114.3	1-63/64 50.4	5/8 15.9	1-31/64 37.7	1 25.4	5.35	QBBUIO-I
<b>QB24GJ9-</b> J (212) 4.331 110	60	2-3/16 2-1/4 2-5/16 2-3/8 2-7/16	6 152.4	7-1/8 180.9	5 127.0	2-7/32 56.3	7/8 22.2	1-33/64 38.5	1-7/32 31.0		QBBUKO-K
<b>QB24GK9-</b> K (214) 4.921 125		2-7/16 2-1/2 2-5/8 2-11/16 2-3/4	6-1/2 165.1	7-5/8 193.7	5-1/2 132.1	2-35/64 64.7	1 25.4	2-3/64 52.0	7/8 22.2	8.6	QFBUJO-J
<b>QB24GL9-</b> L (215) 5.118 130	75	2-11/16 2-3/4 2-13/16 2-7/8 2-15/16 3	7-1/2 190.5	8-3/4 222.2	6-3/8 161.9	2-11/64 55.1	1-1/8 28.6	1-51/64 45.6	1-1/8 28.5	9.7	QFBULO-L
<b>QB24GM9-</b> M (216) 5.118 140		2-3/4 2-15/16 3 3-1/8 3-3/16	7-1/2 190.5	8-3/4 222.2	6-3/8 161.9	2-25/64 60.7	1-1/8 28.6	1-13/16 46.0	1-11/32 34.1	12.1	QFBUMO-M

For housing dimensions ...see page D-13 (GREY)  
For All-Round® Bearings ...see page F-4 (RED)

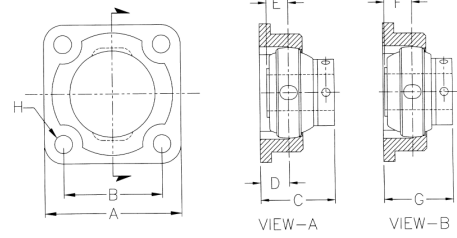
# ALL-ROUND® SOLUTION® MOUNTED FOUR BOLT

Polymer housing with All-Round® Supreme Bearing



Mounting pattern interchanges with:

Dodge F4B-LMB  
Dodge F4B-BO

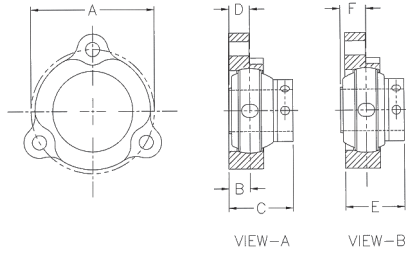


MOUNTED SET P/N	Shaft Diameter		A	B	C	D	E	F	G	H	I	Wt in lbs.	Replacement Polymer Bearing
	GROUP (RING)	mm	in	in mm	in mm	in mm	in mm	in mm	in mm	in mm	in mm		
<b>QB4GC-019-x</b>													
C 205	25	13/16 7/8 15/16 1	2-1/4 57.2	3-1/8 79.4	1-11/16 43	21/32 16.7	1/2 12.6	5/8 15.8	1-9/16 39.8	13/32 10.3		1.7	QBBUCO-C
<b>QB4GD-019-x</b>													
D 206	30	1 1-1/16 1-1/8 1-3/16 1-1/4											QBBUDO-D

For housing dimensions ....see page D-14 (GREY)  
For All-Round® Bearings .....see page F-4 (RED)

# ALL-ROUND® SOLUTION® MOUNTED THREE BOLT FLANGE HOUSINGS

Polymer housing with All-Round® Supreme Bearing



Mounting pattern interchanges with:  
 Dodge SC LF: LF-SC-  
 Fafnir RFD, RFDR  
 Hub City FB100-, FB110-  
 Sealmaster LF-, LF-\_E



Mounted Set P/N Group (Ring) ID	Shaft Diameter		A	B	C	D	E	F	Housing P/N	Wt. in lbs.	Replacement Polymer Fanged Bearing
	mm	inches	in. mm	in. mm	in. mm	in. mm	in. mm	in. mm			
<b>QB22GA9-x</b> A (203)	12	1/2	2.39	13/32 10.4	1-25/64 35.2	3/8 9.5	1-13/64 30.4	9/16 14.3	<b>22GA-01</b>	0.8	QBBUAO-A
	15	9/16	60.7								
	17	5/8	2.50								
<b>QB22GB9-x</b> B (204)	12	1/2	2-13/16 71.4	29/64 11.5	1-3/16 30.2	1/2 12.7	1-3.8 34.9	9/16 14.3	<b>22GB</b>	0.8	QBBUBO-B
	15	9/16									
	17	5/8									
	20	11/16									
<b>QB22GC9-x</b> C (205)	12	1/2	3 76.2	33/64 13.1	1-35/64 39.3	1/2 12.7	1-7/16 36.5	5/8 15.9	<b>22GC</b>	0.8	QBBUCO-C
	15	9/16									
	17	5/8									
<b>QB22GD9-x</b> D (206)	12	1/2	3-9/16 90.5	37/64 14.7	1-55/64 47.3	35/64 13.9	1-1/64 41.7	3/4 19.1	<b>22GD</b>	0.8	QBBUDO-D
	15	9/16									
	17	5/8									
	20	11/16									
<b>QB22GE9-x</b> E (207)	12	1/2	3-15/16 100.0	11/16 17.5	2-5/32 54.8	9/16 14.3	1-25/32 45.2	15/16 23.8	<b>22GE</b>	1.9	QBBUEO-E
	15	9/16									
	17	5/8									
	19	11/16									
	20	3/4									
<b>QB22GF9-x</b> F (208)	12	1/2	4-11/16 119.1			21/32 16.7		31/32 24.6	<b>22GF</b>	0.8	QBBUFO-F
	15	9/16									
	17	5/8									
	19	11/16									
<b>QB22GG9-x</b> G (209)	12	1/2	4-3/4 120.7			21/32 16.7		1-1/32 26.2	<b>22GG</b>	0.8	QBBUGO-G
	15	9/16									
	17	5/8									
	19	11/16									
<b>QB22GH9-x</b> H (210)	12	1/2	5 127.0			21/32 16.7		1-1/32 26.2	<b>22GH</b>	0.8	QBBUHO-H
	15	9/16									
	17	5/8									
	19	11/16									
	20	3/4									

Round bolt holes are standard.  
 Square bolt holes are available - if required, please call for price and lead time.

For housing dimensions .....see page D-15 (GREY)  
 For All-Round® Bearings .....see page F-4 (RED)

# ENGINEERING NOTES