

SELECTION/DIMENSIONS



Type E, Type K, DOUBLE-INTERLOCK and TAF

DODGE[®] MOUNTED BEARINGS APPLICATION DATA SHEET

Instructions: Complete all applicable information and mail or Fax to DODGE at P.O. Box 499, Greenville, SC 29620, Attn: Engineering, Fax 864-2317

Company _____ DIST. USER OEM Date _____
Address _____
Name _____ Phone _____ Fax _____
Type of Equipment (sketch drive on separate sheet) _____

Service Conditions:

Shaft Speed: Normal _____ Maximum _____
Loads: Radial _____ Thrust _____ Shock (frequency) _____
Shaft Size: _____ Shaft Tolerance (specify if not commercial) _____
Duty Cycle: Hours/Day _____ Days/Week _____ Weeks/Year _____

Environment:

Ambient Temperature: Summer _____ °F Winter _____ °F
External Heat: Source of Heat _____
Temperature _____ °F Distance from Bearing _____
Air: Clean _____ Contaminated _____ Contamination Type _____
Gas: Clean _____ Contaminated _____ Contamination Type _____
Liquid: Type _____ Concentration _____
Other: (Including washdowns) _____

Experience: (If applicable)

Type of Bearing Currently Used: _____
Life Realized _____ Type of Failure _____

Other Pertinent Data

L-10 Hours Required: _____

Dimensional Restrictions: Centerline Height _____
Bolt Pattern _____
Other _____

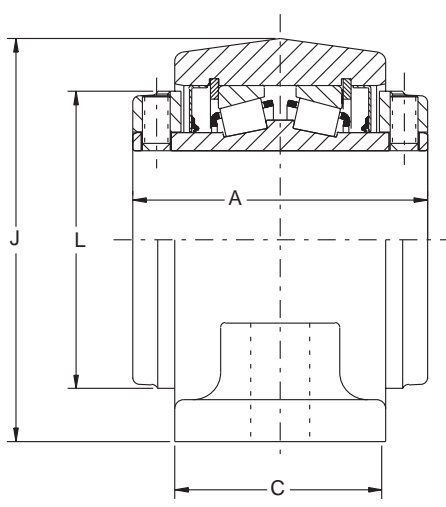
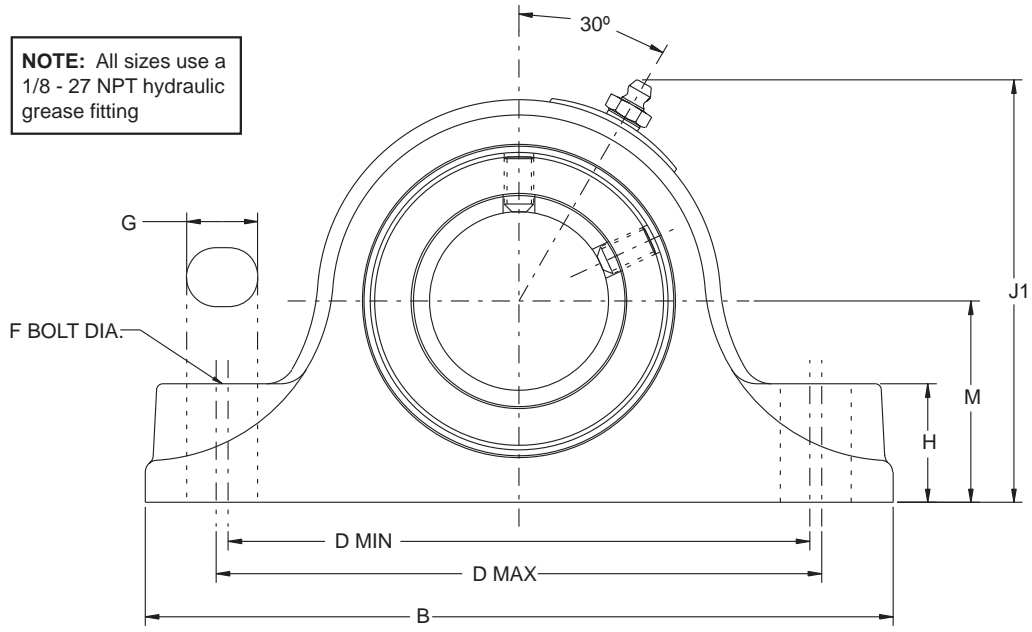
FEATURES/BENEFITS PAGE B6-2	NOMENCLATURE PAGE B6-4	SELECTION PAGE B6-5	SELECTION/DIMENSIONS PAGE B6-8
--------------------------------	---------------------------	------------------------	-----------------------------------

SELECTION/DIMENSIONS

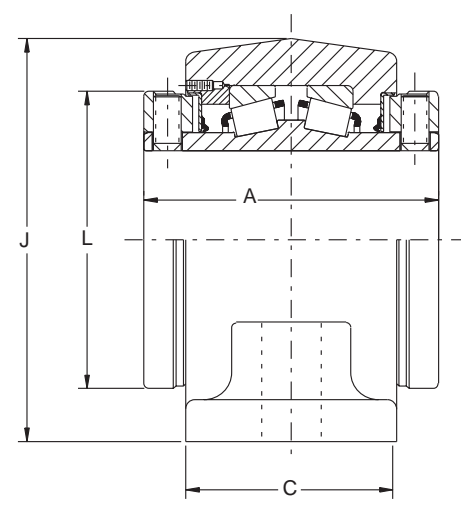


Type E Pillow Block - Inch 2-BOLT BASE

NOTE: All sizes use a 1/8 - 27 NPT hydraulic grease fitting



1-3/16" THRU 3" CONSTRUCTION



3-3/16" THRU 3-1/2" CONSTRUCTION

D-LOK

Type E Family

Specialty Tapered

S-2000

UNISPHERE II

FEATURES/BENEFITS PAGE B6-2	NOMENCLATURE PAGE B6-4	SELECTION PAGE B6-5	SELECTION/DIMENSIONS PAGE B6-8
--------------------------------	---------------------------	------------------------	-----------------------------------

SELECTION/DIMENSIONS



Type E Pillow Block - Inch 2-BOLT BASE

GRAY IRON			
SHAFT SIZE INCHES #	PART NUMBER	PART NAME	WEIGHT LBS (APPROX)
1-3/16	023000	P2B-E-103R	4
1-1/4	023001	P2B-E-104R	4
1-3/8	023002	P2B-E-106R	7
1-7/16	023003	P2B-E-107R	7
1-1/2	023004	P2B-E-108R	10
1-5/8	023005	P2B-E-110R	10
1-11/16	023006	P2B-E-111R	10
1-3/4	023007	P2B-E-112R	12
1-7/8	023008	P2B-E-114R	12
1-15/16	023009	P2B-E-115R	12
2	023010	P2B-E-200R	12
2-3/16	023011	P2B-E-203R	15
2-1/4	023012	P2B-E-204R	21
2-7/16	023013	P2B-E-207R	20
2-1/2	023014	P2B-E-208R	20
2-11/16	023015	P2B-E-211R	29
2-3/4	023016	P2B-E-212R	28
2-15/16	023017	P2B-E-215R	27
3	023018	P2B-E-300R	27
3-3/16	023019	P2B-E-303R	48
3-1/4	023020	P2B-E-304R	47
3-7/16	023021	P2B-E-307R	46
3-1/2	023022	P2B-E-308R	45

Consult DODGE For Sizes Not Listed

CAST STEEL			
SHAFT SIZE INCHES #	PART NUMBER	PART NAME	WEIGHT LBS
1-3/16	023047	SP2B-E-103R	4
1-1/4	023048	SP2B-E-104R	4
1-3/8	023049	SP2B-E-106R	7
1-7/16	023050	SP2B-E-107R	7
1-1/2	023051	SP2B-E-108R	10
1-5/8	023052	SP2B-E-110R	10
1-11/16	023053	SP2B-E-111R	10
1-3/4	023054	SP2B-E-112R	11
1-7/8	023055	SP2B-E-114R	11
1-15/16	023056	SP2B-E-115R	11
2	023057	SP2B-E-200R	11
2-3/16	023058	SP2B-E-203R	14
2-1/4	023059	SP2B-E-204R	19
2-7/16	023060	SP2B-E-207R	19
2-1/2	023061	SP2B-E-208R	19
2-11/16	023062	SP2B-E-211R	26
2-3/4	023063	SP2B-E-212R	26
2-15/16	023064	SP2B-E-215R	26
3	023065	SP2B-E-300R	26
3-3/16	023066	SP2B-E-303R	44
3-1/4	023067	SP2B-E-304R	44
3-7/16	023068	SP2B-E-307R	44
3-1/2	023069	SP2B-E-308R	44

Consult DODGE For Sizes Not Listed

SHAFT SIZE (Inches)	A	B	C	D		F BOLT DIA	G	H	J	J1	L	M												
				MIN	MAX																			
1-3/16	2-3/4	6	1-7/8	4-3/4	4-13/16	1/2	19/32	7/8	3	3-9/32	2-1/4	1-1/2												
1-1/4																								
1-3/8	3	7-3/8	2-1/8	5-5/8	5-7/8	1/2	3/4	1-1/8	3-3/4	4	2-3/4	1-7/8												
1-7/16																								
1-1/2	3-3/8	7-7/8	2-3/8	6-1/8	6-3/8	1/2	3/4	1-1/4	4-1/4	4-15/32	3-3/16	2-1/8												
1-5/8																								
1-11/16																								
1-3/4																								
1-7/8	3-1/2	8-7/8	2-1/2	6-7/8	7-1/8	5/8	7/8	1-5/16	4-1/2	4-11/16	3-7/16	2-1/4												
1-15/16																								
2																								
2-3/16	3-3/4	9-5/8	2-5/8	7-5/8	7-7/8	5/8	7/8	1-1/2	5	5-11/64	3-3/4	2-1/2												
2-1/4																								
2-7/16													4	10-1/2	2-7/8	8-3/8	8-5/8	5/8	7/8	1-5/8	5-1/2	5-5/8	4-1/16	2-3/4
2-1/2																								
2-11/16	4-1/2	12	3	9-5/16	9-11/16	3/4	1	1-7/8	6-1/4	6-11/32	4-23/32	3-1/8												
2-3/4																								
2-15/16																								
3																								
3-3/16	5	14	3-1/2	10-13/16	11-3/16	7/8	1-3/16	2-1/4	7-1/2	7-1/2	5-1/2	3-3/4												
3-1/4																								
3-7/16																								
3-1/2																								

NOTE: All sizes use a 1/8-27 NPT hydraulic grease fitting

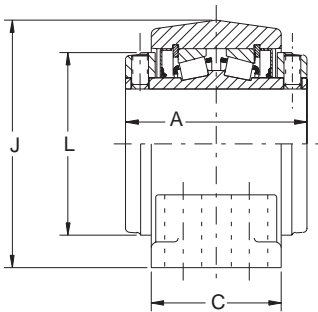
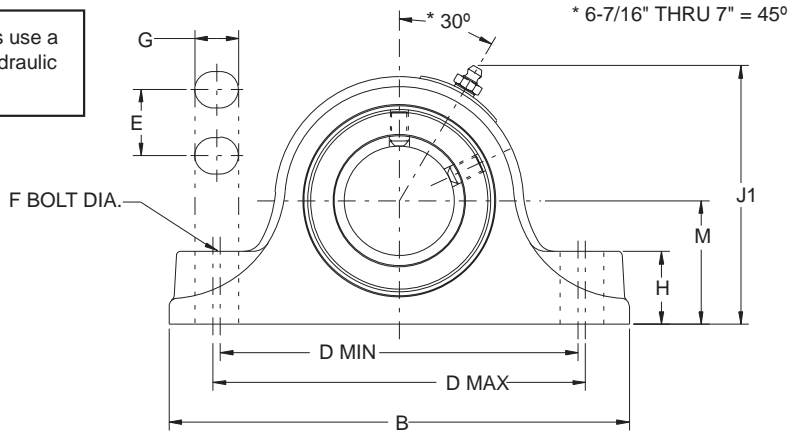
FEATURES/BENEFITS PAGE B6-2	NOMENCLATURE PAGE B6-4	SELECTION PAGE B6-5	SELECTION/DIMENSIONS PAGE B6-8
--------------------------------	---------------------------	------------------------	-----------------------------------

SELECTION/DIMENSIONS

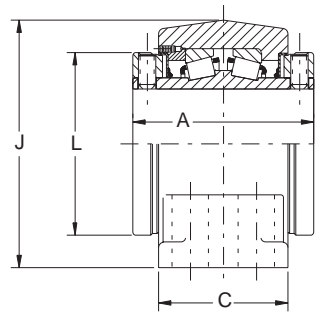


Type E Pillow Block - Inch 4-BOLT BASE

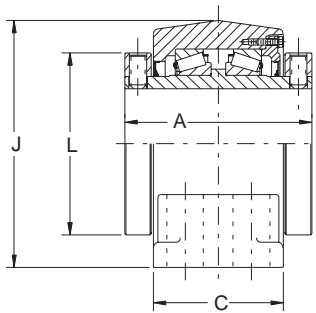
NOTE: All sizes use a 1/8 - 27 NPT hydraulic grease fitting



2-1/4" THRU 3" CONSTRUCTION



3-3/16" THRU 5" CONSTRUCTION



5-7/16" THRU 7" CONSTRUCTION

FEATURES/BENEFITS
PAGE B6-2

NOMENCLATURE
PAGE B6-4

SELECTION
PAGE B6-5

SELECTION/DIMENSIONS
PAGE B6-8

SELECTION/DIMENSIONS



Type E Pillow Block - Inch 4-BOLT BASE

GRAY IRON			
SHAFT SIZE INCHES #	PART NUMBER	PART NAME	WEIGHT LBS (APPROX)
2-1/4	023023	P4B-E-204R	20
2-7/16	023024	P4B-E-207R	20
2-1/2	023025	P4B-E-208R	19
2-11/16	023026	P4B-E-211R	30
2-3/4	023027	P4B-E-212R	28
2-15/16	023028	P4B-E-215R	28
3	023029	P4B-E-300R	28
3-3/16	023030	P4B-E-303R	47
3-1/4	023031	P4B-E-304R	47
3-7/16	023032	P4B-E-307R	46
3-1/2	023033	P4B-E-308R	45
3-15/16	023690	P4B-E-315R	69
4	023691	P4B-E-400R	69
4-7/16	023692	P4B-E-407R	85
4-1/2	023693	P4B-E-408R	85
4-15/16	023694	P4B-E-415R	134
5	023695	P4B-E-500R	133
5-7/16	023040	P4B-E-507R	230
5-15/16	023041	P4B-E-515R	250
6	023042	P4B-E-600R	245
6-7/16	023043	P4B-E-607R	356
6-1/2	023044	P4B-E-608R	350
6-15/16	023045	P4B-E-615R	340
7	023046	P4B-E-700R	335

Consult DODGE For Sizes Not Listed

CAST STEEL			
SHAFT SIZE INCHES #	PART NUMBER	PART NAME	WEIGHT LBS
2-1/4	-----	-----	-----
2-7/16	-----	-----	-----
2-1/2	-----	-----	-----
2-11/16	-----	-----	-----
2-3/4	-----	-----	-----
2-15/16	-----	-----	-----
3	-----	-----	-----
3-3/16	-----	-----	-----
3-1/4	-----	-----	-----
3-7/16	-----	-----	-----
3-1/2	-----	-----	-----
3-15/16	023070	SP4B-E-315R	65
4	023071	SP4B-E-400R	65
4-7/16	023072	SP4B-E-407R	81
4-1/2	023073	SP4B-E-408R	81
4-15/16	023074	SP4B-E-415R	132
5	023075	SP4B-E-500R	132
5-7/16	-----	-----	-----
5-15/16	-----	-----	-----
6	-----	-----	-----
6-7/16	-----	-----	-----
6-1/2	-----	-----	-----
6-15/16	-----	-----	-----
7	-----	-----	-----

Consult DODGE For Sizes Not Listed

SHAFT SIZE INCHES	A	B	C*	D		E	F BOLT DIA	G	H	J1	J	L	M
				MIN	MAX								
2-1/4	4	10-1/2	3-1/2	8-5/16	8-11/16	1-7/8	5/8	7/8	1-5/8	5-1/2	5-5/8	4-1/16	2-3/4
2-7/16													
2-1/2													
2-11/16	4-1/2	12	4	9-3/16	9-13/16	2-1/8	5/8	1	1-7/8	6-1/4	6-11/32	4-23/32	3-1/8
2-3/4													
2-15/16													
3													
3-3/16	5	13-1/2	4-1/2	10-3/4	11-1/4	2-3/8	3/4	1-3/16	2-1/4	7-1/2	7-1/2	5-1/2	3-3/4
3-1/4													
3-7/16													
3-1/2													
3-15/16	6-1/4	15-1/4	4-1/2	12-1/4	12-3/4	2-1/4	3/4	1-1/8	2-7/16	8-1/2	8-7/16	6	4-1/4
4													
4-7/16													
4-1/2	6-3/4	16-5/8	4-5/8	13-1/4	13-3/4	2-1/2	3/4	1-1/8	2-3/4	9-3/8	9-9/32	6-29/64	4-3/4
4-15/16													
5													
5-7/16	9	22	6-1/4	15-1/4	15-3/4	2-7/8	7/8	1-1/4	3	10-7/8	10-11/16	7-29/64	5-1/2
5-15/16													
6													
6-7/16													
6-1/2	10-1/2	26	7-1/8	21-1/4	23-1/4	4-5/8	1	2	3-11/16	14-15/16	----	11-3/8	7-1/2
6-15/16													
7													

NOTE: All sizes use a 1/8-27 NPT hydraulic grease fitting

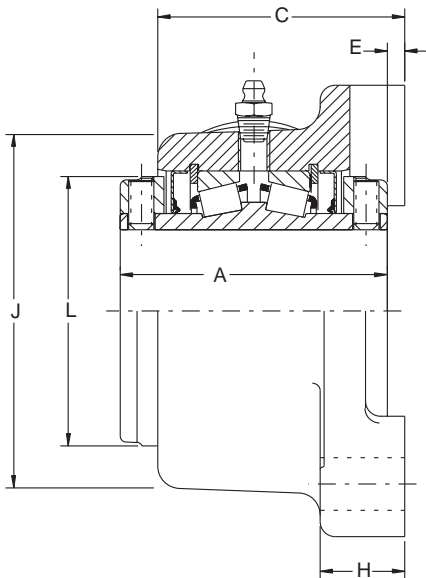
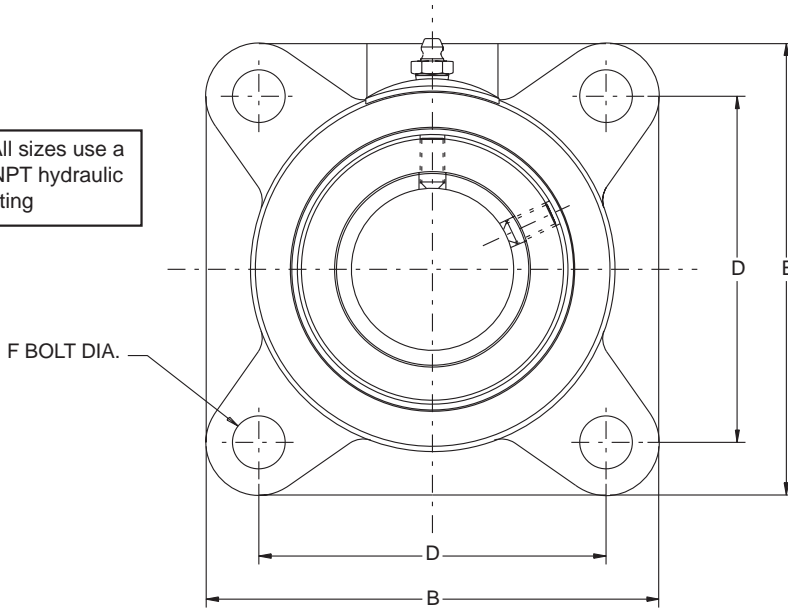
FEATURES/BENEFITS PAGE B6-2	NOMENCLATURE PAGE B6-4	SELECTION PAGE B6-5	SELECTION/DIMENSIONS PAGE B6-8
--------------------------------	---------------------------	------------------------	-----------------------------------

SELECTION/DIMENSIONS

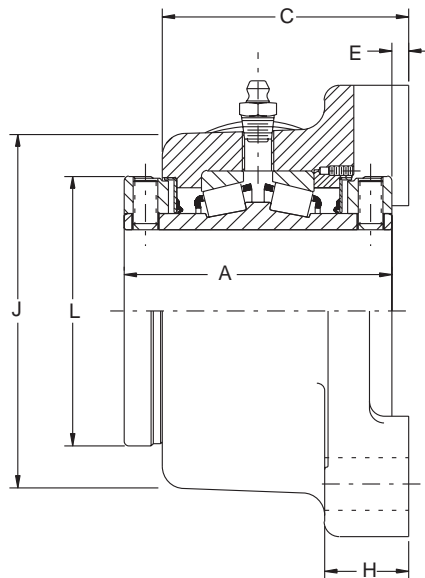


Type E Flange Bearing - Inch 4-BOLT BASE

NOTE: All sizes use a 1/8 - 27 NPT hydraulic grease fitting



1-3/16" THRU 3" CONSTRUCTION



3-3/16" THRU 4-1/2" CONSTRUCTION

FEATURES/BENEFITS
PAGE B6-2

NOMENCLATURE
PAGE B6-4

SELECTION
PAGE B6-5

SELECTION/DIMENSIONS
PAGE B6-8

SELECTION/DIMENSIONS



Type E Flange Bearing - Inch 4-BOLT BASE

GRAY IRON			
SHAFT SIZE INCHES #	PART NUMBER	PART NAME	WEIGHT LBS (APPROX)
1-3/16	023093	F4B-E-103R	4
1-1/4	023094	F4B-E-104R	4
1-3/8	023095	F4B-E-106R	7
1-7/16	023096	F4B-E-107R	7
1-1/2	023097	F4B-E-108R	11
1-5/8	023098	F4B-E-110R	11
1-11/16	023099	F4B-E-111R	11
1-3/4	023100	F4B-E-112R	12
1-7/8	023101	F4B-E-114R	12
1-15/16	023102	F4B-E-115R	12
2	023103	F4B-E-200R	12
2-3/16	023104	F4B-E-203R	15
2-1/4	023105	F4B-E-204R	21
2-7/16	023106	F4B-E-207R	20
2-1/2	023107	F4B-E-208R	19
2-11/16	023108	F4B-E-211R	28
2-3/4	023109	F4B-E-212R	28
2-15/16	023110	F4B-E-215R	27
3	023111	F4B-E-300R	26
3-3/16	023112	F4B-E-303R	52
3-1/4	023113	F4B-E-304R	51
3-7/16	023114	F4B-E-307R	50
3-1/2	023115	F4B-E-308R	50
3-15/16	023116	F4B-E-315R	75
4	023117	F4B-E-400R	75
4-7/16	023118	F4B-E-407R	90
4-1/2	023119	F4B-E-408R	90

Consult DODGE For Sizes Not Listed.

SHAFT SIZE INCHES	A	B	C	D	E	F BOLT	H	J	L
1-3/16	2-3/4	3-3/4	2-11/32	2-7/8	1/16	3/8	1	2-15/16	2-1/4
1-1/4									
1-3/8	3	4-5/8	2-19/32	3-1/2	1/16	1/2	1-1/16	3-1/2	2-3/4
1-7/16									
1-1/2	3-3/8	5-3/8	2-31/32	4-1/8	1/8	1/2	1-3/16	4-3/16	3-3/16
1-5/8									
1-11/16									
1-3/4	3-1/2	5-5/8	3-3/32	4-3/8	1/8	1/2	1-3/16	4-7/16	3-7/16
1-7/8									
1-15/16									
2									
2-3/16	3-3/4	6-1/4	3-9/32	4-7/8	1/8	5/8	1-3/8	4-7/8	3-3/4
2-1/4									
2-7/16	4	6-7/8	3-9/16	5-3/8	3/16	5/8	1-1/2	5-5/16	4-1/16
2-1/2									
2-11/16	4-1/2	7-3/4	3-15/16	6	3/16	3/4	1-5/8	6	4-23/32
2-3/4									
2-15/16									
3									
3-3/16	5	9-1/4	4-1/2	7	1/4	3/4	1-7/8	7-1/4	5-1/2
3-1/4									
3-7/16									
3-1/2									
3-15/16	6-1/4	10-1/4	5-5/8	7-3/4	1/4	7/8	2-1/8	8-1/4	6
4									
4-7/16	6-3/4	10-7/8	5-15/16	8-3/4	11/32	7/8	2-7/16	8-3/4	6-29/64
4-1/2									

NOTE: All sizes use a 1/8-27 NPT hydraulic grease fitting

FEATURES/BENEFITS PAGE B6-2	NOMENCLATURE PAGE B6-4	SELECTION PAGE B6-5	SELECTION/DIMENSIONS PAGE B6-8
--------------------------------	---------------------------	------------------------	-----------------------------------

SELECTION/DIMENSIONS



Type E Piloted Flange

D-LOK

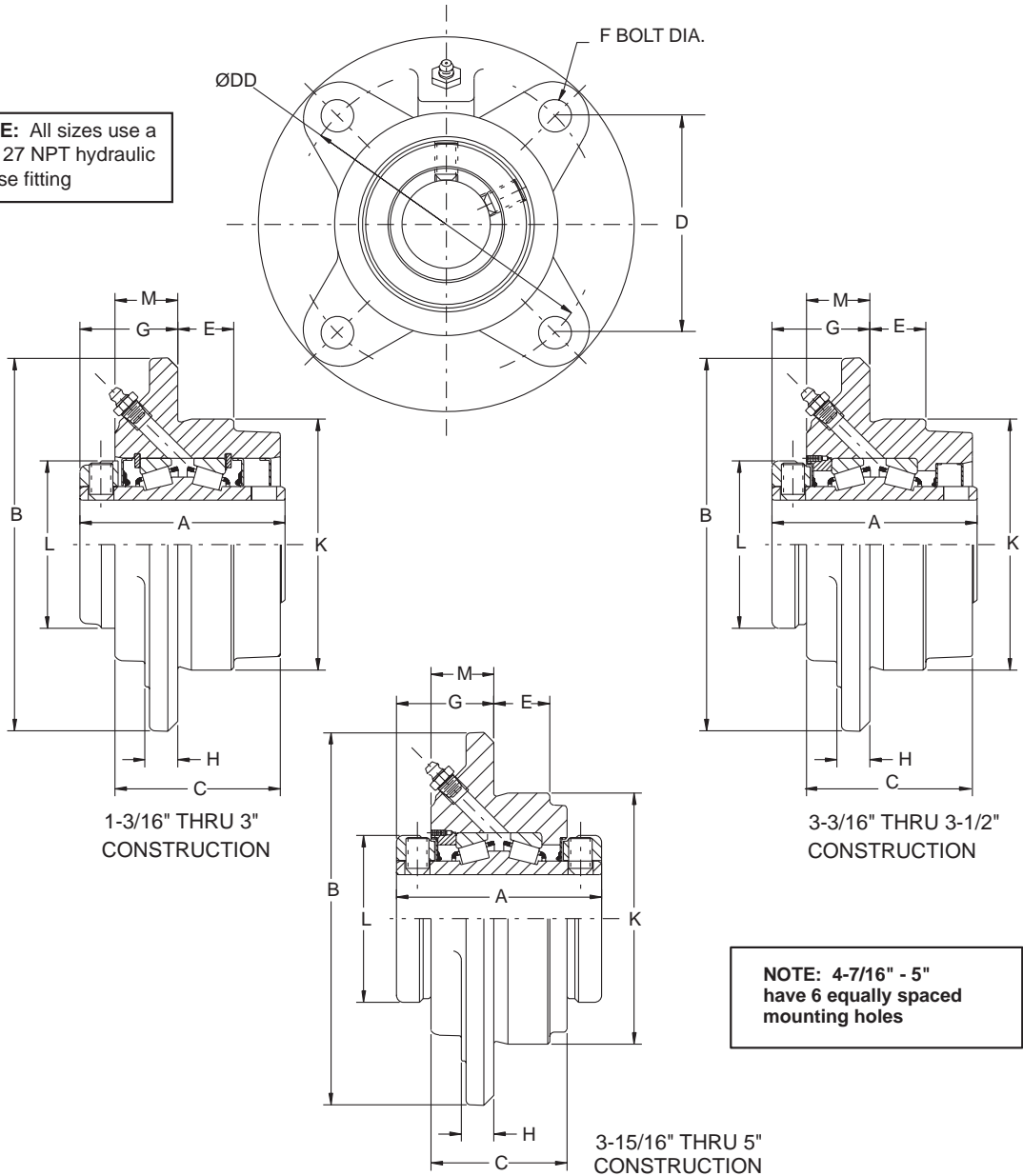
Type E Family

Specialty Tapered

S-2000

UNISPHERE II

NOTE: All sizes use a 1/8 - 27 NPT hydraulic grease fitting



NOTE: 4-7/16" - 5" have 6 equally spaced mounting holes

FEATURES/BENEFITS PAGE B6-2	NOMENCLATURE PAGE B6-4	SELECTION PAGE B6-5	SELECTION/DIMENSIONS PAGE B6-8
--------------------------------	---------------------------	------------------------	-----------------------------------

SELECTION/DIMENSIONS



Type E Piloted Flange

GRAY IRON			
SHAFT SIZE INCHES #	PART NUMBER	PART NAME	WEIGHT LBS (APPROX)
1-3/16	023120	FC-E-103R	5
1-1/4	023121	FC-E-104R	5
1-3/8	023122	FC-E-106R	7
1-7/16	023123	FC-E-107R	6
1-1/2	023124	FC-E-108R	10
1-5/8	023125	FC-E-110R	9
1-11/16	023126	FC-E-111R	9
1-3/4	023127	FC-E-112R	11
1-7/8	023128	FC-E-114R	10
1-15/16	023129	FC-E-115R	10
2	023130	FC-E-200R	10
2-3/16	023131	FC-E-203R	14
2-1/4	023132	FC-E-204R	18
2-7/16	023133	FC-E-207R	18
2-1/2	023134	FC-E-208R	17
2-11/16	023135	FC-E-211R	27
2-3/4	023136	FC-E-212R	27
2-15/16	023137	FC-E-215R	25
3	023138	FC-E-300R	25
3-3/16	023139	FC-E-303R	44
3-1/4	023140	FC-E-304R	44
3-7/16	023141	FC-E-307R	43
3-1/2	023142	FC-E-308R	42
3-15/16	023143	FC-E-315R	59
4	023144	FC-E-400R	58
4-7/16 ##	023145	FC-E-407R	110
4-1/2 ##	023146	FC-E-408R	110
4-15/16 ##	023147	FC-E-415R	130
5 ##	023148	FC-E-500R	130

Consult DODGE For Sizes Not Listed.

SHAFT SIZE INCHES	A	B	C	D	ØDD	E	F BOLT#	G	H	K**	L	M
1-3/16	2-3/4	5	2-7/32	2.92	4-1/8	3/4	3/8	1-5/16	7/16	3-3/8	2-1/4	27/32
1-1/4												
1-3/8	3	5-1/4	2-15/32	3.09	4-3/8	7/8	3/8	1-1/2	1/2	3-5/8	2-3/4	1-1/32
1-7/16												
1-1/2	3-3/8	6-1/8	2-25/32	3.62	5-1/8	1-1/16	7/16	1-9/16	1/2	4-1/4	3-3/16	1-1/32
1-5/8												
1-11/16												
1-3/4	3-1/2	6-3/8	2-29/32	3.80	5-3/8	1-3/16	7/16	1-9/16	9/16	4-1/2	3-7/16	1-1/32
1-7/8												
1-15/16												
2												
2-3/16	3-3/4	7-1/8	3-3/32	4.24	6	1-3/16	1/2	1-11/16	9/16	5	3-3/4	1-3/32
2-1/4												
2-7/16	4	7-5/8	3-5/16	4.60	6-1/2	1-5/16	1/2	1-13/16	5/8	5-1/2	4-1/16	1-3/16
2-1/2												
2-11/16	4-1/2	8-3/4	3-11/16	5.30	7-1/2	1-1/2	5/8	2	3/4	6-3/8	4-23/32	1-1/4
2-3/4												
2-15/16												
3												
3-3/16	5	10-1/4	4-3/16	6.10	8-5/8	1-1/4	3/4	2-7/16	15/16	7-3/8	5-1/2	1-11/16
3-1/4												
3-7/16												
3-1/2												
3-15/16	6-1/4	10-7/8	4-1/2	6.63	9-3/8	1-1/2	3/4	2-11/16	1	8-1/8	6	1-13/16
4												
4-7/16	6-3/4	13-1/2	4-5/8	##	11-3/4	1-1/2	3/4##	3	1	10-1/4	6-29/64	1-15/16
4-1/2												
4-15/16	7-1/4	14-3/4	5-1/16	##	12-3/4	1-3/4	7/8##	2-31/32	1-1/4	11	7-29/64	1-7/8
5												

* 1-3/16 To 3-1/2 - One Collar
3-15/16 To 5, - Two Collars

(6) BOTS EQUALLY SPACED
** +.000 -.002

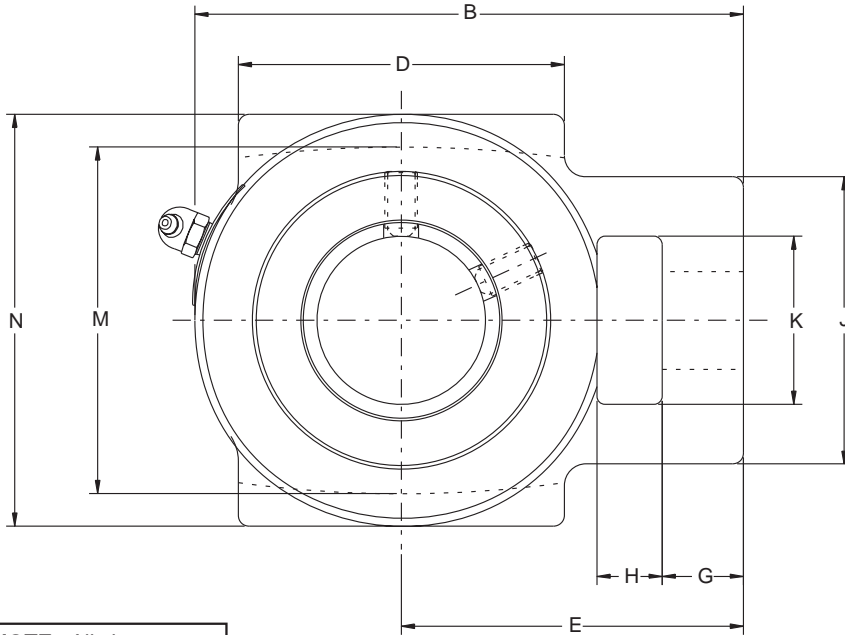
NOTE: All sizes use a 1/8-27 NPT hydraulic grease fitting

FEATURES/BENEFITS PAGE B6-2	NOMENCLATURE PAGE B6-4	SELECTION PAGE B6-5	SELECTION/DIMENSIONS PAGE B6-8
--------------------------------	---------------------------	------------------------	-----------------------------------

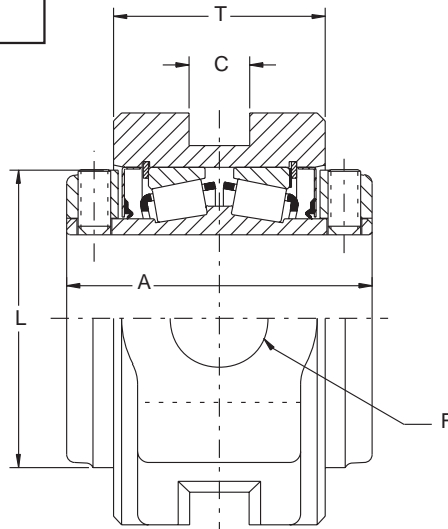
SELECTION/DIMENSIONS



Type E Wide Slot Take-Up Unit



NOTE: All sizes use a 1/8 - 27 NPT hydraulic grease fitting



1-3/8" THRU 3" CONSTRUCTION

D-LOK

Type E Family

Specialty Tapered

S-2000

UNISPHERE II

FEATURES/BENEFITS PAGE B6-2	NOMENCLATURE PAGE B6-4	SELECTION PAGE B6-5	SELECTION/DIMENSIONS PAGE B6-8
--------------------------------	---------------------------	------------------------	-----------------------------------

SELECTION/DIMENSIONS



Type E Wide Slot Take-Up Unit

GRAY IRON				
SHAFT SIZE # Inches	PART NUMBER	PART NAME	WEIGHT LBS (APPROX)	FRAME Δ
1-3/8	023076	WSTU-E-106R	8	CP308
1-7/16	023077	WSTU-E-107R	8	
1-1/2	023078	WSTU-E-108R	10	CP400
1-5/8	023079	WSTU-E-110R	10	
1-11/16	023080	WSTU-E-111R	10	
1-3/4	023081	WSTU-E-112R	12	CP400
1-7/8	023082	WSTU-E-114R	12	
1-15/16	023083	WSTU-E-115R	12	
2	023084	WSTU-E-200R	12	
2-3/16	023085	WSTU-E-203R	16	CP408
2-1/4	023086	WSTU-E-204R	21	CP502
2-7/16	023087	WSTU-E-207R	21	
2-1/2	023088	WSTU-E-208R	21	
2-11/16	023089	WSTU-E-211R	30	CP515
2-3/4	023090	WSTU-E-212R	30	
2-15/16	023091	WSTU-E-215R	30	
3	023092	WSTU-E-300R	30	

Consult DODGE For Sizes Not Listed.

Δ See page B15-20 for CP Take-Up Frame

SHAFT SIZE INCHES	A	B	C	D	E	F SCREW DIA	G	H	J	K	L	M	N	T
1-3/8 1-7/16	3	5-3/32	17/32	2-3/4	3-7/32	3/4	11/16	5/8	2-7/16	1-7/16	2-3/4	3-1/2	4-1/8	2-1/16
1-1/2 1-5/8 1-11/16	3-3/8	6	11/16	3-1/4	3-13/16	1	15/16	3/4	3-5/16	1-15/16	3-3/16	4	4-3/4	2-5/16
1-3/4 1-7/8 1-15/16 2	3-1/2	6-5/16	11/16	3-3/4	3-15/16	1	15/16	3/4	3-5/16	1-15/16	3-7/16	4	4-3/4	2-7/16
2-3/16	3-3/4	7-1/8	13/16	3-3/4	4-5/8	1-1/8	1	1-1/4	3-7/8	2-1/4	3-3/4	4-1/2	5-1/4	2-9/16
2-1/4 2-7/16 2-1/2	4	7-13/16	1-1/16	4-1/2	5-1/16	1-1/4	1-1/16	1-1/4	4-1/4	2-1/2	4-1/16	5-1/8	6	2-3/4
2-11/16 2-3/4 2-15/16 3	4-1/2	9-1/8	1-13/16	4-3/4	5-7/8	1-1/2	1-1/8	1-1/2	4-7/8	2-3/4	4-23/32	5-15/16	6-3/4	3

NOTE: All sizes use a 1/8-27 NPT hydraulic grease fitting

FEATURES/BENEFITS PAGE B6-2	NOMENCLATURE PAGE B6-4	SELECTION PAGE B6-5	SELECTION/DIMENSIONS PAGE B6-8
--------------------------------	---------------------------	------------------------	-----------------------------------



SELECTION/DIMENSIONS



Type E TP Take-Up Bearing - Inch

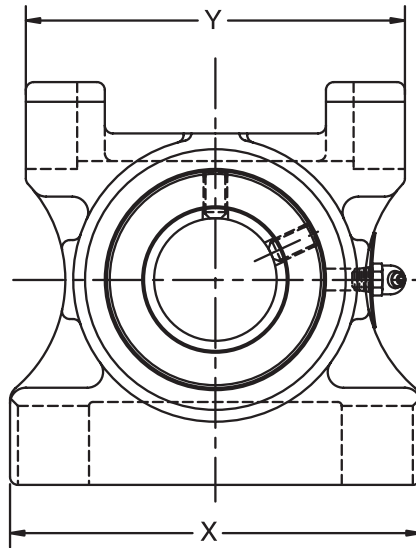
D-LOK

Type E Family

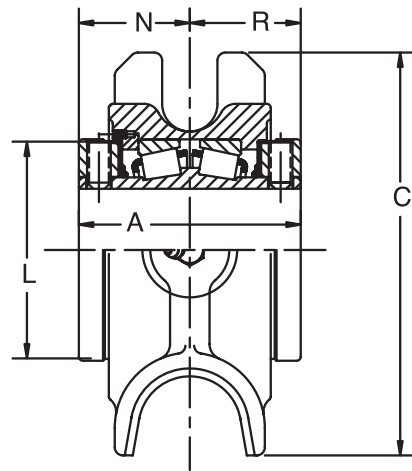
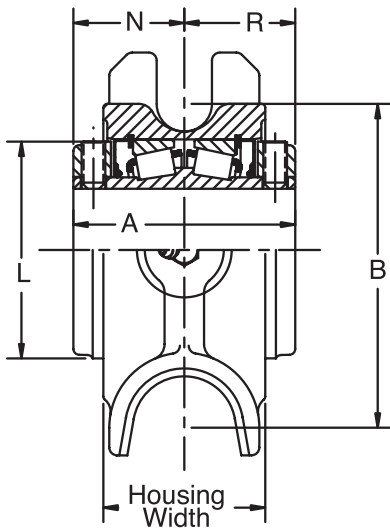
Specialty Tapered

S-2000

UNISPHERE II



NOTE: All sizes use a 1/8 - 27 NPT hydraulic grease fitting



FEATURES/BENEFITS PAGE B6-2	NOMENCLATURE PAGE B6-4	SELECTION PAGE B6-5	SELECTION/DIMENSIONS PAGE B6-8
--------------------------------	---------------------------	------------------------	-----------------------------------

SELECTION/DIMENSIONS



Type E TP Take-Up Bearing - Inch

GRAY IRON				
SHAFT SIZE INCHES #	PART NUMBER	PART NAME	WEIGHT LBS (APPROX)	FRAME SIZE REF.
1-3/4	023149	TP-E-112R	14	TP10
1-7/8	023150	TP-E-114R	14	TP10
1-15/16	023151	TP-E-115R	14	TP10
2	023152	TP-E-200R	14	TP10
2-3/16	023153	TP-E-203R	16	TP20
2-1/4	023154	TP-E-204R	21	TP30
2-7/16	023155	TP-E-207R	21	TP30
2-1/2	023156	TP-E-208R	21	TP30
2-11/16	023157	TP-E-211R	29	TP40
2-3/4	023158	TP-E-212R	29	TP40
2-15/16	023159	TP-E-215R	29	TP40
3	023160	TP-E-300R	29	TP40
3-3/16	023161	TP-E-303R	43	TP50
3-1/4	023162	TP-E-304R	43	TP50
3-7/16	023163	TP-E-307R	42	TP50
3-1/2	023164	TP-E-308R	42	TP50
3-15/16	023165	TP-E-315R	62	TP60
4	023166	TP-E-400R	62	TP60

Consult DODGE For Sizes Not Listed.

Shaft Size	A	B	C	L	N	Housing Width	X	Y
1-3/4 1-7/8 1-15/16 2	3-1/2	5-3/16	6-3/8	3-7/16	1-3/4	2-9/16	6-1/2	6
2-3/16	3-3/4	5-13/16	6-7/8	3-3/4	1-7/8	2-9/16	6-3/4	7
2-1/4 2-7/16 2-1/2	4	6-1/4	7-7/16	4-1/16	2	3	7-1/2	7
2-11/16 2-3/4 2-15/16 3	4-1/2	7-3/16	8-5/16	4-23/32	2-1/4	3	8-1/2	8
3-3/16 3-1/4 3-7/16 3-1/2	5	8-5/16	9-5/8	5-1/2	2-1/2	3-3/4	9-1/2	9
3-15/16 4	6-1/4	9-1/16	11	6	3-1/8	4-3/4	11	10-1/2

NOTE: All sizes use a 1/8-27 NPT hydraulic grease fitting

FEATURES/BENEFITS PAGE B6-2	NOMENCLATURE PAGE B6-4	SELECTION PAGE B6-5	SELECTION/DIMENSIONS PAGE B6-8
--------------------------------	---------------------------	------------------------	-----------------------------------

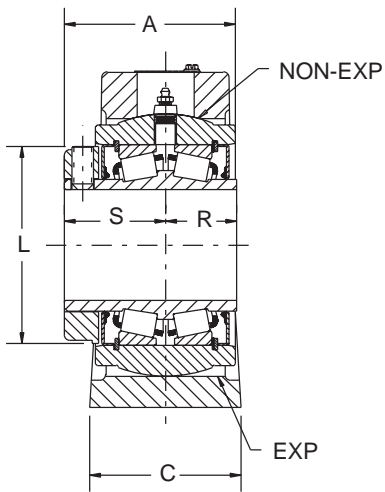
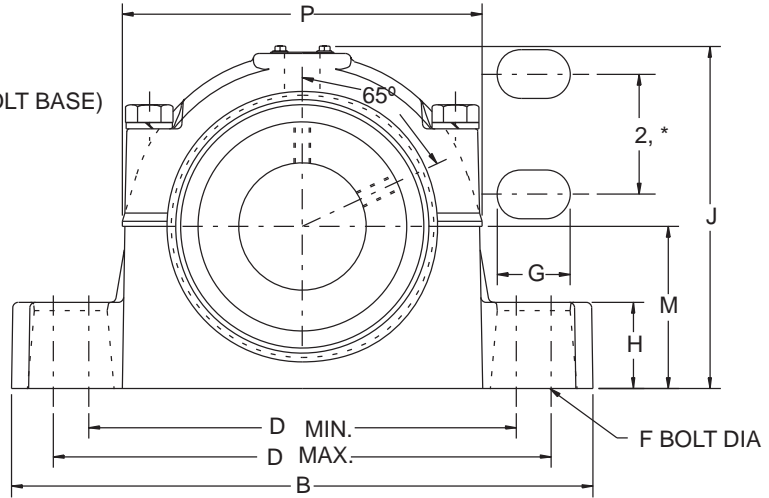
SELECTION/DIMENSIONS



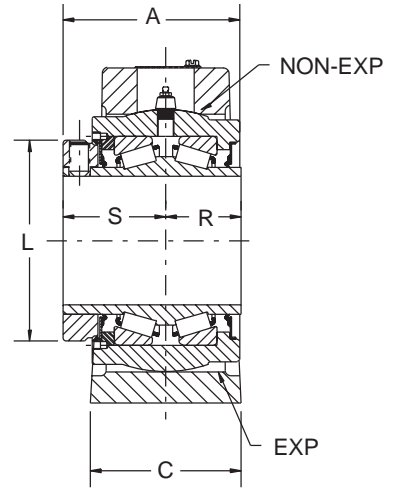
Type K Pillow Block 2 & 4 BOLT BASE - INCH*

- * 1-3/16 THRU 3-1/2 (2 BOLT BASE)
- * 3-15/16 (4 BOLT BASE)

NOTE: All sizes use a 1/8 - 27 NPT hydraulic grease fitting



1-3/16" THRU 3"
CONSTRUCTION



3-3/16" THRU 3-15/16"
CONSTRUCTION

D-LOK

Type E Family

Specialty Tapered

S-2000

UNISPHERE II

FEATURES/BENEFITS PAGE B6-2	NOMENCLATURE PAGE B6-4	SELECTION PAGE B6-5	SELECTION/DIMENSIONS PAGE B6-8
--------------------------------	---------------------------	------------------------	-----------------------------------

SELECTION/DIMENSIONS



Type K Pillow Block 2 & 4 BOLT BASE - INCH*

GRAY IRON NON-EXPANSION			
SHAFT SIZE INCHES #	PART NUMBER	PART NAME	WEIGHT LBS (APPROX)
1-3/16	023167	P2B-K-103R	9
1-1/4	023168	P2B-K-104R	9
1-7/16	023170	P2B-K-107R	11
1-1/2	023171	P2B-K-108R	15
1-5/8	023172	P2B-K-110R	14
1-11/16	023173	P2B-K-111R	14
1-3/4	023174	P2B-K-112R	20
1-15/16	023175	P2B-K-115R	19
2	023176	P2B-K-200R	19
2-3/16	023177	P2B-K-203R	24
2-1/4	023178	P2B-K-204R	28
2-7/16	023179	P2B-K-207R	28
2-1/2	023180	P2B-K-208R	28
2-11/16	023181	P2B-K-211R	40
2-3/4	023182	P2B-K-212R	40
2-15/16	023183	P2B-K-215R	39
3	023184	P2B-K-300R	39
3-7/16	023186	P2B-K-307R	67
3-1/2	023187	P2B-K-308R	66
3-15/16 ▲	023188	P4B-K-315R	106

Non-Expansion Furnished Unless Otherwise Specified
Consult DODGE For Sizes Not Listed

GRAY IRON EXPANSION			
SHAFT SIZE INCHES #	PART NUMBER	PART NAME	WEIGHT LBS (APPROX)
1-3/16	023189	P2B-K-103RE	9
1-1/4	023190	P2B-K-104RE	9
1-7/16	023192	P2B-K-107RE	11
1-1/2	023193	P2B-K-108RE	15
1-5/8	023194	P2B-K-110RE	14
1-11/16	023195	P2B-K-111RE	14
1-3/4	023196	P2B-K-112RE	20
1-15/16	023197	P2B-K-115RE	19
2	023198	P2B-K-200RE	19
2-3/16	023199	P2B-K-203RE	24
2-1/4	023200	P2B-K-204RE	28
2-7/16	023201	P2B-K-207RE	28
2-1/2	023200	P2B-K-208RE	28
2-11/16	023203	P2B-K-211RE	40
2-3/4	023204	P2B-K-212RE	40
2-15/16	023205	P2B-K-215RE	39
3	023206	P2B-K-300RE	39
3-7/16	023208	P2B-K-307RE	67
3-1/2	023209	P2B-K-308RE	66
3-15/16 ▲	023210	P4B-K-315RE	106

Consult DODGE For Sizes Not Listed

SHAFT SIZE INCHES	A	B	C	D		F BOLT DIA	G	H	J	L	M	P	R	S	EXP*
				MIN.	MAX.										
1-3/16															
1-1/4	2-9/32	7-1/2	1-7/8	6	6-3/8	3/8	11/16	1	4-17/32	2-1/4	2-1/8	5	1	1-3/8	3/32
1-3/8															
1-7/16	2-35/64	8	2-3/16	6-1/4	6-5/8	1/2	3/4	1-1/4	5-15/64	2-3/4	2-3/8	5-33/64	1-1/32	1-1/2	3/32
1-1/2															
1-5/8	2-53/64	9	2-3/8	6-7/8	7-5/8	1/2	1	1-3/8	5-3/4	3-3/16	2-5/8	5-13/16	1-9/16	1-11/16	3/32
1-11/16															
1-3/4															
1-15/16	2-61/64	10	2-17/32	7-3/8	8-7/16	5/8	1-19/64	1-1/2	6-17/64	3-7/16	2-7/8	6-23/64	1-13/64	1-3/4	9/32
2															
2-3/16	3-5/32	11	2-21/32	8-1/16	9-1/4	5/8	1-21/64	1-1/2	6-33/64	3-3/4	3	6-61/64	1-1/4	1-7/8	9/32
2-1/4															
2-7/16	3-11/32	12	2-13/16	9-1/4	10-1/4	5/8	1-17/64	1-3/4	7-1/32	4-1/16	3-1/4	7-3/8	1-5/16	2	9/32
2-1/2															
2-11/16															
2-3/4	3-25/32	13-7/16	2-15/16	9-7/8	11-1/2	3/4	1-11/16	2	7-59/64	4-23/32	3-3/4	8-5/16	1-7/16	2-1/4	9/32
2-15/16															
3															
3-3/16															
3-7/16	4-17/64	16	3-7/16	12-13/16	13-13/16	7/8	1-1/2	2-1/4	9-27/64	5-1/2	4-1/2	10-3/32	1-11/16	2-1/2	9/32
3-1/2															
3-15/16▲	5-13/32	17-7/16	4-3/4	13-1/8	14-3/4	3/4	1-45/64	2-3/4	10-27/64	6	5	10-45/64	2-1/8	3-1/8	11/32

*Exp-Total Expansion Divided Equally On Both Sides Of Bearing (Expansion Bearings Only)

NOTE: All sizes use a 1/8-27 NPT hydraulic grease fitting

▲ 4 Bolt Base (See Page For Bolts Spacing)

Dowel Hole Locations For Precision Positioning - See Page -

FEATURES/BENEFITS PAGE B6-2	NOMENCLATURE PAGE B6-4	SELECTION PAGE B6-5	SELECTION/DIMENSIONS PAGE B6-8
--------------------------------	---------------------------	------------------------	-----------------------------------

SELECTION/DIMENSIONS



Type K Flange Bearing - Inch

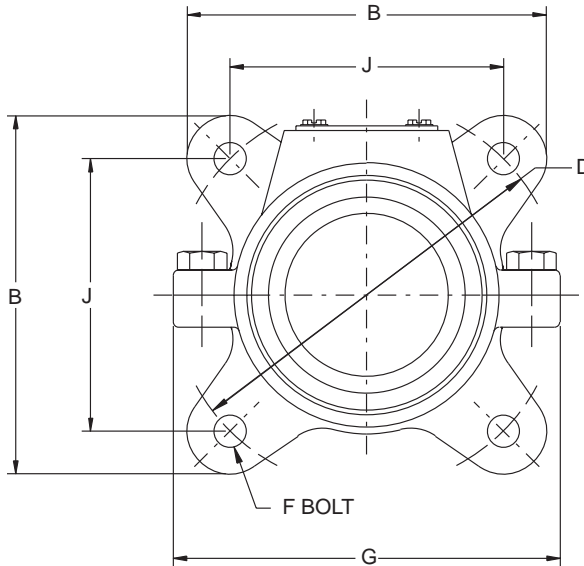
D-LOK

Type E Family

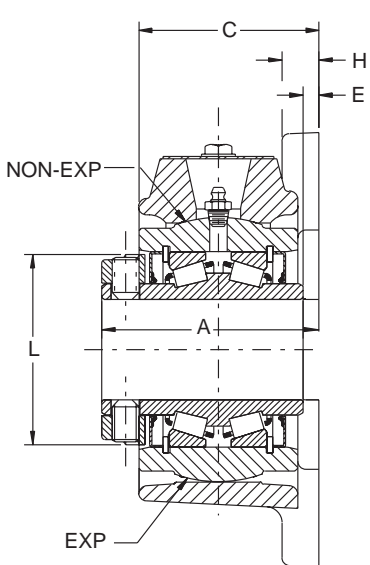
Specialty Tapered

S-2000

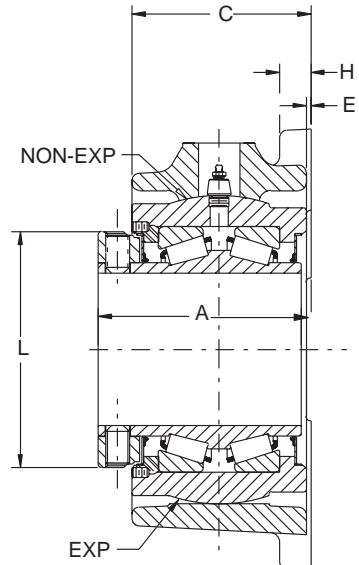
UNISPHERE II



NOTE: All sizes use a 1/8 - 27 NPT hydraulic grease fitting



1-3/16" THRU 3" INTERNAL CONSTRUCTION



3-3/16" THRU 3-15/16" INTERNAL CONSTRUCTION

FEATURES/BENEFITS PAGE B6-2	NOMENCLATURE PAGE B6-4	SELECTION PAGE B6-5	SELECTION/DIMENSIONS PAGE B6-8
--------------------------------	---------------------------	------------------------	-----------------------------------

SELECTION/DIMENSIONS



Type K Flange Bearing - Inch

DUCTILE IRON - NON-EXPANSION			
SHAFT SIZE INCHES #	PART NUMBER	PART NAME	WEIGHT LBS (APPROX)
1-1/4	023212	F4B-K-104R	6
1-7/16	023214	F4B-K-107R	7
1-1/2	023215	F4B-K-108R	12
1-15/16	023219	F4B-K-115R	14
2	023220	F4B-K-200R	14
2-3/16	023221	F4B-K-203R	17
2-7/16	023223	F4B-K-207R	20
2-1/2	023224	F4B-K-208R	20
2-15/16	023227	F4B-K-215R	24
3	023228	F4B-K-300R	24
3-7/16	023230	F4B-K-307R	45
3-15/16	023232	F4B-K-315R	72

Non-Expansion Furnished Unless Otherwise Specified

Consult DODGE For Sizes Not Listed.

DUCTILE IRON - EXPANSION			
SHAFT SIZE INCHES #	PART NUMBER	PART NAME	WEIGHT LBS (APPROX)
1-1/4	023234	F4B-K-104RE	6
1-7/16	023236	F4B-K-107RE	7
1-1/2	023237	F4B-K-108RE	12
1-15/16	023241	F4B-K-115RE	14
2	023242	F4B-K-200RE	14
2-3/16	023243	F4B-K-203RE	17
2-7/16	023245	F4B-K-207RE	20
2-1/2	023246	F4B-K-208RE	20
2-15/16	023249	F4B-K-215RE	24
3	023250	F4B-K-300RE	24
3-7/16	023252	F4B-K-307RE	45
3-15/16	023254	F4B-K-315RE	72

Consult DODGE For Sizes Not Listed.

SHAFT SIZE INCHES	A	B	C	D	E	F Bolt Dia.	G	H	J	L	EXP*
1-3/16											
1-1/4	2-9/16	5-3/16	2-1/8	5-21/32	3/16	3/8	5-1/4	7/16	4	2-1/4	9/32
1-3/8											
1-7/16	2-11/16	5-3/4	2-1/8	6-1/4	5/32	1/2	5-3/4	1/2	4-27/64	2-3/4	3/16
1-1/2											
1-5/8	3	6-1/8	2-7/16	6-3/4	5/32	1/2	6-3/4	1/2	4-25/32	3-3/16	3/16
1-11/16											
1-3/4											
1-15/16	3-1/8	6-7/8	2-9/16	7-1/2	5/32	5/8	7-1/4	9/16	5-5/16	3-7/16	3/16
2											
2-3/16	3-5/16	7-3/16	2-23/32	8	5/32	5/8	7-13/16	9/16	5-21/32	3-3/4	3/16
2-1/4											
2-7/16	3-9/16	7-5/8	2-59/64	8-1/2	1/4	5/8	8-9/16	5/8	6	4-1/16	5/16
2-1/2											
2-11/16											
2-3/4											
2-15/16	4	8-7/8	3-11/32	9-3/4	1/4	3/4	9-1/2	11/16	6-57/64	4-23/32	5/16
3											
3-3/16											
3-7/16	4-1/2	10-1/4	3-23/32	11-1/2	1/4	7/8	11-3/8	3/4	8-1/8	5-1/2	5/16
3-1/2											
3-15/16	5-1/2	11-7/16	4-5/8	13	1/8	1	12-7/8	13/16	9-3/16	6	5/16

* ExpTotal Expansion Divided Equally On Both Sides Of Bearing (Expansion Bearings Only)

NOTE: All sizes use a 1/8-27 NPT hydraulic grease fitting

FEATURES/BENEFITS PAGE B6-2	NOMENCLATURE PAGE B6-4	SELECTION PAGE B6-5	SELECTION/DIMENSIONS PAGE B6-8
--------------------------------	---------------------------	------------------------	-----------------------------------

SELECTION/DIMENSIONS



Type K Units - Inch

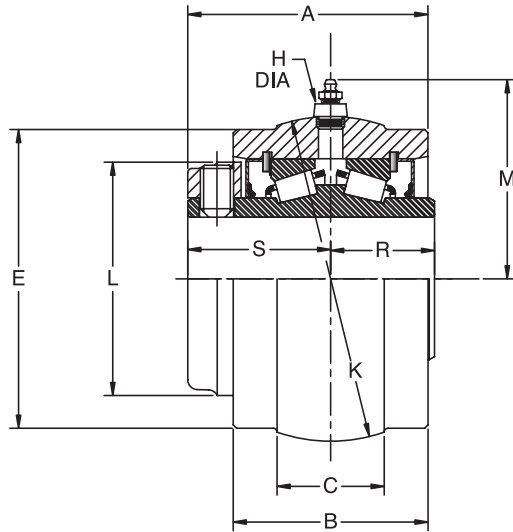
D-LOK

Type E Family

Specialty Tapered

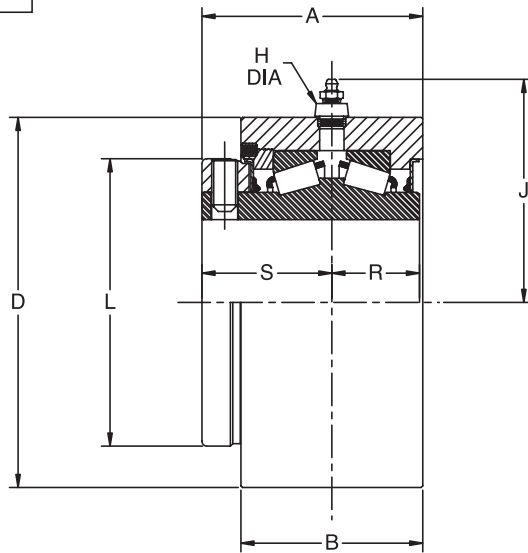
S-2000

UNISPHERE II



S-1 UNIT
1-3/16" THRU 3" CONSTRUCTION

NOTE: All sizes use a 1/8 - 27 NPT hydraulic grease fitting



B-1 UNIT
3-3/16" THRU 3-15/16" CONSTRUCTION

FEATURES/BENEFITS PAGE B6-2	NOMENCLATURE PAGE B6-4	SELECTION PAGE B6-5	SELECTION/DIMENSIONS PAGE B6-8
--------------------------------	---------------------------	------------------------	-----------------------------------

SELECTION/DIMENSIONS



Type K Units - Inch

TYPE S-1 UNITS -- GRAY IRON			
SHAFT SIZE INCHES #	PART NUMBER	PART NAME	WEIGHT LBS (APPROX)
1-3/16	023271	S1U-K-103R	3
1-1/4	023272	S1U-K-104R	3
1-3/8	023273	S1U-K-106R	4
1-7/16	023274	S1U-K-107R	4
1-1/2	023275	S1U-K-108R	5
1-5/8	023276	S1U-K-110R	5
1-11/16	023277	S1U-K-111R	5
1-3/4	023278	S1U-K-112R	7
1-15/16	023279	S1U-K-115R	7
2	023280	S1U-K-200R	7
2-3/16	023281	S1U-K-203R	9
2-1/4	023282	S1U-K-204R	11
2-7/16	023283	S1U-K-207R	11
2-1/2	023284	S1U-K-208R	11
2-11/16	023285	S1U-K-211R	15
2-3/4	023286	S1U-K-212R	15
2-15/16	023287	S1U-K-215R	15
3	023288	S1U-K-300R	15
3-3/16	023289	S1U-K-303R	28
3-7/16	023290	S1U-K-307R	28
3-1/2	023291	S1U-K-308R	28
3-15/16	023292	S1U-K-315R	40

Consult DODGE For Sizes Not Listed.

TYPE B-1 UNITS -- GRAY IRON			
SHAFT SIZE INCHES #	PART NUMBER	PART NAME	WEIGHT LBS (APPROX)
1-3/16	-----	B1U-K-103R	3
1-1/4	-----	B1U-K-104R	3
1-3/8	023293	B1U-K-106R	4
1-7/16	023294	B1U-K-107R	4
1-1/2	023295	B1U-K-108R	5
1-5/8	023296	B1U-K-110R	5
1-11/16	023297	B1U-K-111R	5
1-3/4	023298	B1U-K-112R	7
1-15/16	023299	B1U-K-115R	7
2	023300	B1U-K-200R	7
2-3/16	023301	B1U-K-203R	9
2-1/4	023302	B1U-K-204R	11
2-7/16	023303	B1U-K-207R	11
2-1/2	023304	B1U-K-208R	11
2-11/16	023305	B1U-K-211R	15
2-3/4	023306	B1U-K-212R	15
2-15/16	023307	B1U-K-215R	15
3	023308	B1U-K-300R	15
3-3/16	023309	B1U-K-303R	28
3-7/16	023310	B1U-K-307R	28
3-1/2	023311	B1U-K-308R	28
3-15/16	023312	B1U-K-315R	40

Consult DODGE For Sizes Not Listed.

SHAFT SIZE INCHES	A	B	C	D *	E%		H	J	K **	L	M	R	S
					MACHINE SIDE	CAST SIDE							
1-3/16													
1-1/4	2-5/16	1-7/8	1-1/32	----	2.813	3-1/8	7/16	----	3.125	2-1/4	2-1/32	1	1-3/8
1-3/8													
1-7/16	2-17/32	2-1/16	1-5/32	3-7/16	3.250	3-5/16	11/16	2-5/8	3.625	2-3/4	2-5/8	1-1/32	1-1/2
1-1/2													
1-5/8	2-27/32	2-5/16	1-3/16	3-15/16	3.750	3-13/16	11/16	2-7/8	4.125	3-3/16	2-13/16	1-5/32	1-11/16
1-11/16													
1-3/4													
1-15/16	2-31/32	2-7/16	1-1/2	4-1/4	4.125	4-3/16	11/16	3	4.562	3-7/16	3-1/16	1-13/64	1-3/4
2													
2-3/16	3-5/32	2-9/16	1-9/16	4-5/8	4.500	4-9/16	11/16	3-1/4	5.000	3-3/4	3-1/4	1-1/4	1-7/8
2-1/4													
2-7/16	3-3/8	2-3/4	1-7/16	5	4.812	4-7/8	11/16	3-7/16	5.186	4-1/16	3-3/8	1-5/16	2
2-1/2													
2-11/16													
2-3/4	3-3/4	3	1-7/8	5-7/8	5.563	5-5/8	11/16	3-7/8	6.061	4-23/32	3-13/16	1-7/16	2-1/4
2-15/16													
3													
3-3/16													
3-7/16	4-1/4	3-1/2	2	7-1/8	6.813	6-7/8	11/16	4-1/2	7.373	5-1/2	4-1/2	1-11/16	2-1/2
3-1/2													
3-15/16	5-3/8	4-1/2	2-3/8	7-7/8	7.438	7-1/2	15/16	5-1/2	7.997	6	5-5/32	2-1/8	3-1/8

* +.000 -.002,"

** +.000 -.001 SIZES 1-3/16 THRU 3,"

±.0005, SIZES 3-3/16 THRU 3-15/16,"

ALL DIMENSIONS SHOWN IN INCHES

% Machined side of unit is on collar side only.

NOTE: All sizes use a 1/8-27 NPT hydraulic grease fitting

FEATURES/BENEFITS PAGE B6-2	NOMENCLATURE PAGE B6-4	SELECTION PAGE B6-5	SELECTION/DIMENSIONS PAGE B6-8
--------------------------------	---------------------------	------------------------	-----------------------------------



SELECTION/DIMENSIONS



Type K Wide Slot Take-Up Unit - Inch

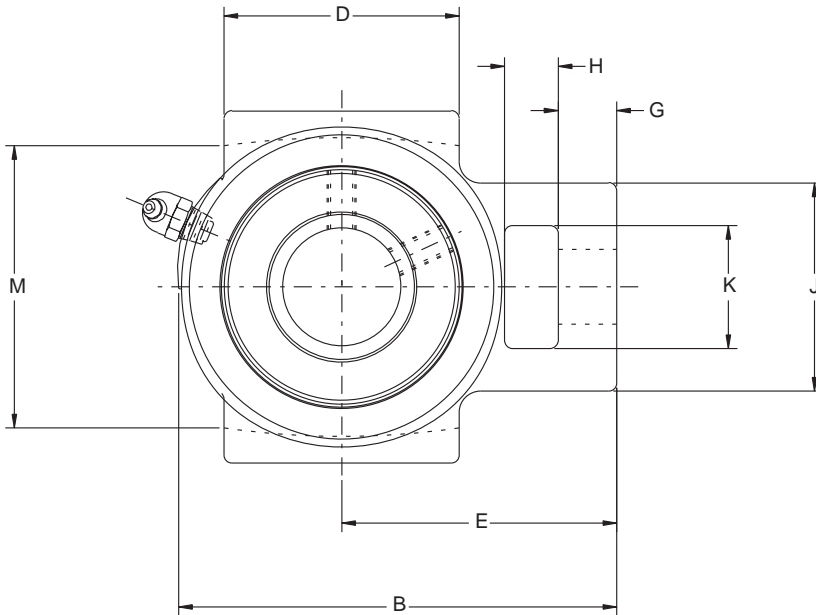
D-LOK

Type E Family

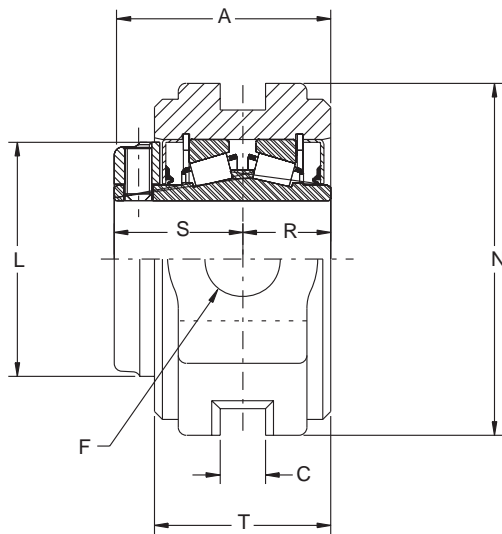
Specialty Tapered

S-2000

UNISPHERE II



NOTE: All sizes use a 1/8 - 27 NPT hydraulic grease fitting



1-3/8" THRU 3" CONSTRUCTION

FEATURES/BENEFITS PAGE B6-2	NOMENCLATURE PAGE B6-4	SELECTION PAGE B6-5	SELECTION/DIMENSIONS PAGE B6-8
--------------------------------	---------------------------	------------------------	-----------------------------------

SELECTION/DIMENSIONS



Type K Wide Slot Take-Up Unit - Inch

GRAY IRON				
SHAFT SIZE INCHES #	PART NUMBER	PART NAME	WEIGHT LBS (APPROX)	CP FRAME SIZE
1-7/16	023256	WSTU-K-107R	8	CP308
1-15/16	023261	WSTU-K-115R	11	CP400
2-3/16	023263	WSTU-K-203R	15	CP408
2-7/16	023265	WSTU-K-207R	20	CP502
2-1/2	023266	WSTU-K-208R	20	
2-15/16	023269	WSTU-K-215R	28	CP515
3	023270	WSTU-K-300R	28	

Consult DODGE For Sizes Not Listed.

SHAFT SIZE Inches	A	B	C	D	E	F SCREW DIA	G	H	J	K	L	M	N	R	S	T
1-7/16	2-17/32	5-3/32	17/32	2-3/4	3-7/32	3/4	11/16	5/8	2-7/16	1-7/16	2-3/4	3-1/2	4-1/8	1-1/32	1-1/2	2-1/16
1-15/16	2-31/32	6-5/16	11/16	3-3/4	3-15/16	1	15/16	3/4	3-5/16	1-15/16	3-7/16	4	4-3/4	1-13/64	1-3/4	2-7/16
2-3/16	3-5/32	7-1/8	13/16	3-3/4	4-5/8	1-1/8	1	1-1/4	3-7/8	2-1/4	3-3/4	4-1/2	5-1/4	1-1/4	1-7/8	2-9/16
2-7/16	3-3/8	7-13/16	1-1/16	4-1/2	5-1/16	1-1/2	1-1/16	1-1/4	4-1/4	2-1/2	4-1/16	5-1/8	6	1-5/16	2	2-3/4
2-1/2																
2-15/16 3	3-3/4	9-1/8	1-13/16	4-3/4	5-7/8	1-1/2	1-3/8	1-1/2	4-7/8	2-3/4	4-23/32	5-15/16	6-3/4	1-7/16	2-1/4	3

NOTE: All sizes use a 1/8-27 NPT hydraulic grease fitting

FEATURES/BENEFITS PAGE B6-2	NOMENCLATURE PAGE B6-4	SELECTION PAGE B6-5	SELECTION/DIMENSIONS PAGE B6-8
--------------------------------	---------------------------	------------------------	-----------------------------------

SELECTION/DIMENSIONS



Type K TP Take-Up Bearing - Inch

D-LOK

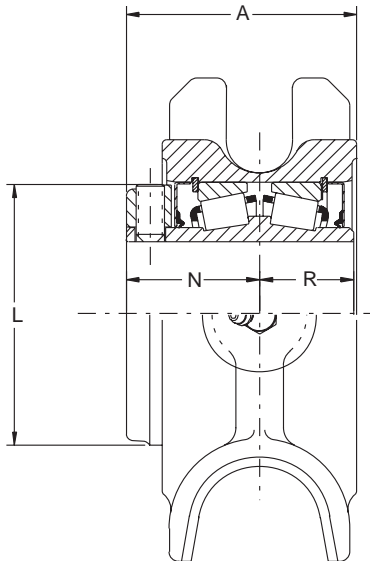
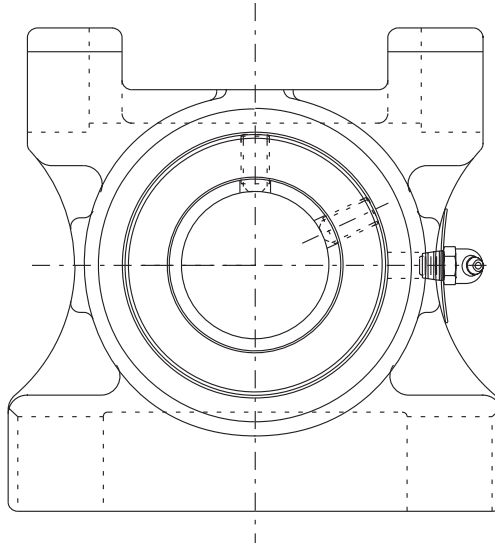
Type E Family

Specialty Tapered

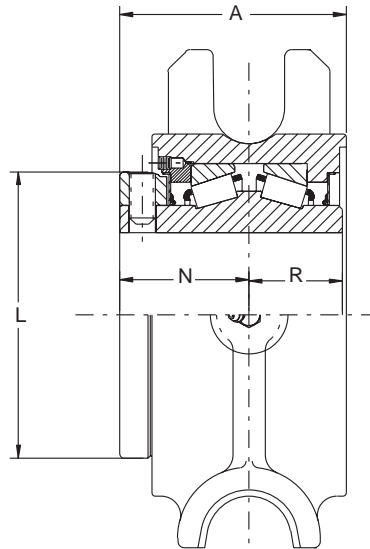
S-2000

UNISPHERE II

NOTE: All sizes use a 1/8 - 27 NPT hydraulic grease fitting



1-3/16" THRU 3" INTERNAL CONSTRUCTION



3-3/16" THRU 3-15/16" INTERNAL CONSTRUCTION

FEATURES/BENEFITS PAGE B6-2	NOMENCLATURE PAGE B6-4	SELECTION PAGE B6-5	SELECTION/DIMENSIONS PAGE B6-8
--------------------------------	---------------------------	------------------------	-----------------------------------

SELECTION/DIMENSIONS



Type K TP Take-Up Bearing - Inch

GRAY IRON			
SHAFT SIZE INCHES #	PART NUMBER	PART NAME	WEIGHT LBS (APPROX)
1-15/16	023314	TP-K-115R	13
2-3/16	023316	TP-K-203R	16
2-7/16	023318	TP-K-207R	20
2-15/16	023322	TP-K-215R	27
3-7/16	023325	TP-K-307R	40
3-15/16	023327	TP-K-315R	59

Consult DODGE For Sizes Not Listed.

SHAFT SIZE INCHES	FRAME SIZE REF.	A	L	N	R
1-15/16	TP10	3-1/32	3-7/16	1-3/4	1-7/32
2-3/16	TP20	3-3/16	3-3/4	1-7/8	1-1/4
2-7/16	TP30	3-1/2	4-1/16	2	1-5/16
2-15/16	TP40	3-3/4	4-23/32	2-1/4	1-7/16
3-7/16	TP50	4-9/32	5-1/2	2-13/32	1-25/32
3-15/16	TP60	5-1/2	6	3-1/8	2-1/8

NOTE: All sizes use a 1/8-27 NPT hydraulic grease fitting

D-LOK

Type E Family

Speciality Tapered

S-2000

UNISPHERE II

FEATURES/BENEFITS PAGE B6-2	NOMENCLATURE PAGE B6-4	SELECTION PAGE B6-5	SELECTION/DIMENSIONS PAGE B6-8
--------------------------------	---------------------------	------------------------	-----------------------------------

SELECTION/DIMENSIONS



DOUBLE-INTERLOCK Pillow Block - Inch 2-BOLT BASE

D-LOK

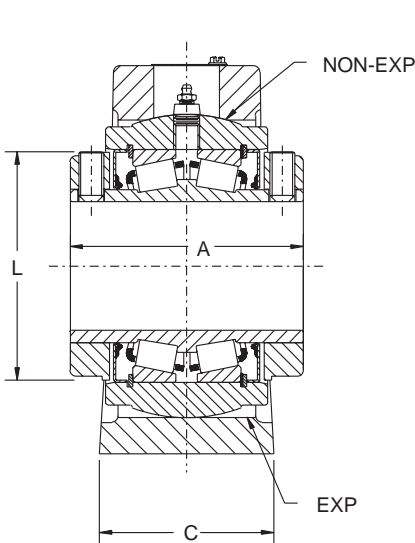
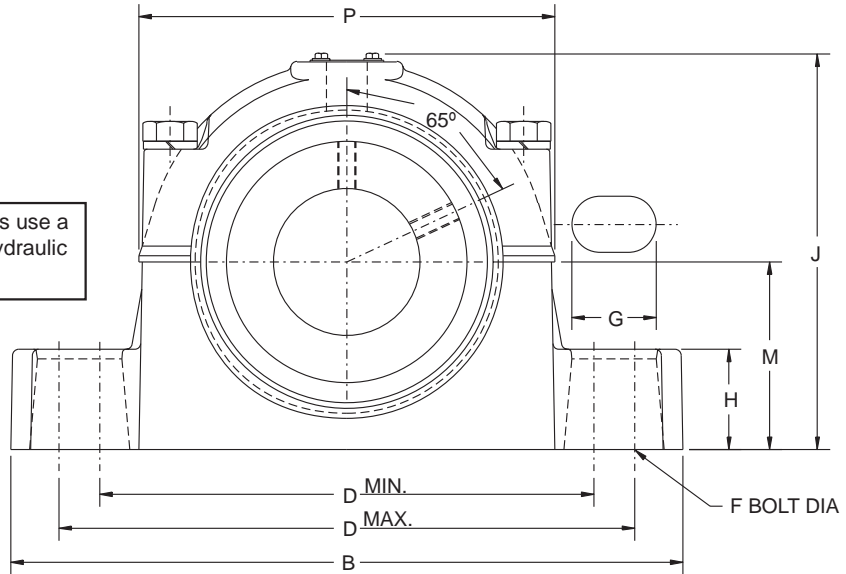
Type E Family

Specialty Tapered

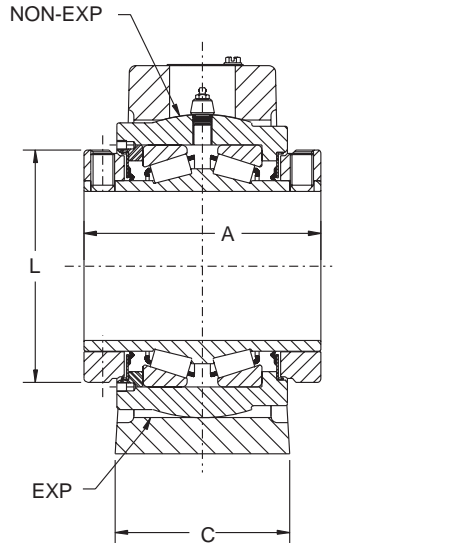
S-2000

UNISPHERE II

NOTE: All sizes use a 1/8 - 27 NPT hydraulic grease fitting



1-3/16" THRU 3" CONSTRUCTION



3-3/16" THRU 3-1/2" CONSTRUCTION

FEATURES/BENEFITS PAGE B6-2	NOMENCLATURE PAGE B6-4	SELECTION PAGE B6-5	SELECTION/DIMENSIONS PAGE B6-8
--------------------------------	---------------------------	------------------------	-----------------------------------

SELECTION/DIMENSIONS



DOUBLE-INTERLOCK Pillow Block - Inch 2-BOLT BASE

GRAY IRON NON-EXPANSION					
SHAFT SIZE INCHES#	SHAFT SIZE SYMBOL	PILLOW BLOCK ASSY	HOUSING ONLY	BEARING INNER UNIT	PIL. BLK. WT., APRX LBS
1-1/4	104	023329	056130	023508	9
1-3/8	106	023330	056132	023509	11
1-7/16	107	023331	056132	023510	11
1-1/2	108	023332	056134	023511	15
1-5/8	110	023333	056134	023512	15
1-11/16	111	023334	056134	023513	15
1-3/4	112	023335	056136	023514	18
1-15/16	115	023337	056136	023516	17
2	200	023338	056136	023517	17
2-3/16	203	023339	056138	023518	25
2-1/4	204	023340	056140	023519	29
2-7/16	207	023341	056140	023520	26
2-1/2	208	023342	056140	023521	26
2-11/16	211	023343	056142	023522	41
2-3/4	212	023344	056142	023523	41
2-15/16	215	023345	056142	023524	40
3	300	023346	056142	023525	40
3-3/16	303	023347	056144	023526	67
3-7/16	307	023349	056144	023528	66
3-1/2	308	023350	056144	023529	66

Description = P2B-DI-207R For 2-7/16" Size

Consult DODGE For Sizes Not Listed.

Non-Expansion Furnished Unless Otherwise Specified

GRAY IRON EXPANSION					
SHAFT SIZE INCHES#	SHAFT SIZE SYMBOL	PILLOW BLOCK ASSY	HOUSING ONLY	BEARING INNER UNIT	PIL. BLK. WT., APRX LBS
1-1/4	104	023376	056100	023508	9
1-3/8	106	023377	056102	023509	11
1-7/16	107	023378	056102	023510	11
1-1/2	108	023379	056104	023511	15
1-5/8	110	023380	056104	023512	15
1-11/16	111	023381	056104	023513	15
1-3/4	112	023382	056106	023514	18
1-15/16	115	023384	056106	023516	17
2	200	023385	056106	023517	17
2-3/16	203	023386	056108	023518	22
2-1/4	204	023387	056110	023519	29
2-7/16	207	023388	056110	023520	26
2-1/2	208	023389	056110	023521	26
2-11/16	211	023390	056112	023522	42
2-3/4	212	023391	056112	023523	42
2-15/16	215	023392	056112	023524	41
3	300	023393	056112	023525	41
3-3/16	303	023394	056114	023526	69
3-7/16	307	023396	056114	023528	68
3-1/2	308	023397	056114	023529	68

Description = P2B-DI-207RE For 2-7/16" Size

Consult DODGE For Sizes Not Listed.

SHAFT SIZE INCHES	A	B	C	D		F BOLT DIA.	G	H	J	L	M	P	EXP*
				MIN.	MAX.								
1-1/4	2-3/4	7-1/2	1-7/8	6	6-3/8	3/8	43/64	1	4-17/32	2-1/4	2-1/8	5	3/32
1-3/8	3	8	2-3/16	6-1/4	6-5/8	1/2	3/4	1-1/4	5-15/64	2-3/4	2-3/8	5-33/64	3/32
1-7/16													
1-1/2	3-3/8	9	2-3/8	6-7/8	7-5/8	1/2	1	1-3/8	5-3/4	3-3/16	2-5/8	5-13/16	3/32
1-5/8													
1-11/16													
1-3/4	3-1/2	10	2-17/32	7-3/8	8-7/16	5/8	1-19/64	1-1/2	6-17/64	3-7/16	2-7/8	6-23/64	9/32
1-15/16													
2	3-3/4	11	2-21/32	8-1/16	9-1/4	5/8	1-21/64	1-1/2	6-33/34	3-3/4	3	6-31/32	9/32
2-3/16													
2-1/4													
2-7/16	4	12	2-13/16	9-17/64	10-1/4	5/8	1-17/64	1-3/4	7-1/32	4-1/16	3-1/4	7-3/8	9/32
2-1/2													
2-11/16													
2-3/4	4-1/2	13-7/16	2-15/16	9-7/8	11-1/2	3/4	1-11/16	2	7-59/64	4-23/32	3-3/4	8-5/16	9/32
2-15/16													
3													
3-3/16	5	16	3-7/16	12-13/16	13-13/16	7/8	1-1/2	2-1/4	9-27/64	5-1/2	4-1/2	10-3/32	9/32
3-7/16													
3-1/2													

* EXP - Total Expansion Divided Equally On Both Sides Of Bearing (Expansion Bearings Only)

Dowel Hole Locations For Precision Positioning - See Page -

NOTE: All sizes use a 1/8-27 NPT hydraulic grease fitting

FEATURES/BENEFITS PAGE B6-2	NOMENCLATURE PAGE B6-4	SELECTION PAGE B6-5	SELECTION/DIMENSIONS PAGE B6-8
--------------------------------	---------------------------	------------------------	-----------------------------------

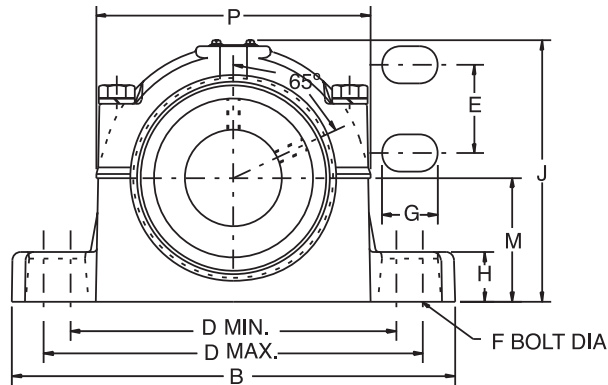


SELECTION/DIMENSIONS

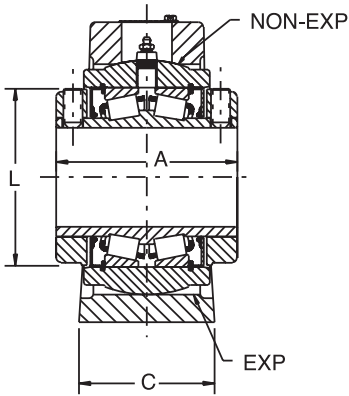


DOUBLE-INTERLOCK Pillow Block - Inch 4-BOLT BASE

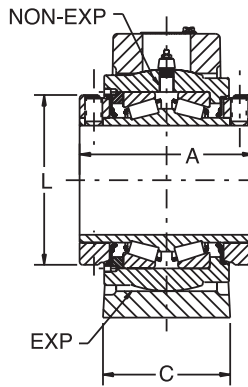
NOTE: All sizes use a 1/8 - 27 NPT hydraulic grease fitting



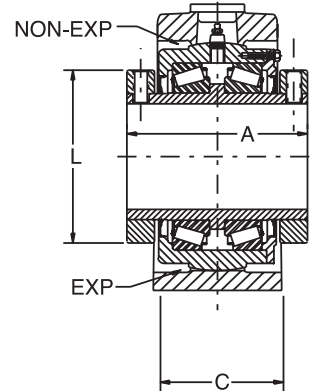
2-7/16" THRU 5"
CONSTRUCTION



2-7/16" THRU 3"
CONSTRUCTION



3-7/16" THRU 5"
CONSTRUCTION



5-7/16" THRU 5-15/16"
CONSTRUCTION

FEATURES/BENEFITS
PAGE B6-2

NOMENCLATURE
PAGE B6-4

SELECTION
PAGE B6-5

SELECTION/DIMENSIONS
PAGE B6-8

SELECTION/DIMENSIONS



DOUBLE-INTERLOCK Pillow Block - Inch 4-BOLT BASE

GRAY IRON NON EXPANSION					
SHAFT SIZE INCHES#	SHAFT SIZE SYMBOL	PILLOW BLOCK ASSY	HOUSING ONLY	BEARING INNER UNIT	PIL. BLK. WT., APRX LBS
2-7/16	207	023352	060745	023520	28
2-1/2	208	023353	060745	023521	28
2-11/16	211	023354	060747	023522	38
2-15/16	215	023356	060747	023524	38
3	300	023357	060747	023525	38
3-7/16	307	023360	060749	023528	69
3-1/2	308	023361	060749	023529	69
3-15/16	315	023362	060751	023530	109
4	400	023363	060751	023531	109
4-7/16	407	023364	060753	023532	139
4-1/2	408	023365	060753	023533	135
4-15/16	415	023366	060755	023534	183
5	500	023367	060755	023535	181
5-7/16	507	023368	060579	023536	310
5-15/16	515	023369	060579	023537	299

GRAY IRON EXPANSION					
SHAFT SIZE INCHES#	SHAFT SIZE SYMBOL	PILLOW BLOCK ASSY	HOUSING ONLY	BEARING INNER UNIT	PIL. BLK. WT., APRX LBS
2-7/16	207	023399	060746	023520	28
2-1/2	208	023400	060746	023521	28
2-11/16	211	023401	060748	023522	38
2-15/16	215	023403	060748	023524	38
3	300	023404	060748	023525	38
3-7/16	307	023407	060750	023528	69
3-1/2	308	023408	060750	023529	69
3-15/16	315	023409	060752	023530	110
4	400	023410	060752	023531	110
4-7/16	407	023411	060754	023532	139
4-1/2	408	023412	060754	023533	135
4-15/16	415	023413	060756	023534	181
5	500	023414	060756	023535	179
5-7/16	507	023415	060578	023536	310
5-15/16	515	023416	060578	023537	299

Non-Expansion Furnished Unless Otherwise Specified

Consult DODGE For Sizes Not Listed.

SHAFT SIZE INCHES	A	B	C	D		E	F BOLT DIA	G	H	J	L	M	P	EXP*
				MIN.	MAX.									
2-7/16	4	12	3-3/8	9-17/64	10-1/4	1-3/4	1/2	1-1/16	1-3/4	7-1/32	4-1/16	3-1/4	7-3/8	9/32
2-1/2				9-7/8	11-1/2									
2-11/16	4-1/2	13-7/16	3-1/2	9-7/8	11-1/2	1-7/8	5/8	1-9/16	2	7-59/64	4-23/32	3-3/4	8-5/16	9/32
2-15/16														
3	5	16	4	12-13/16	13-13/16	2	3/4	1-29/64	2-1/4	9-27/64	5-1/2	4-1/2	10-3/32	9/32
3-7/16														
3-1/2	6-3/4	19	4-5/8	14-3/8	16-1/4	2-1/4	3/4	1-13/16	3	11-37/64	6-29/64	5-3/4	12-29/64	11/32
3-15/16														
4	9	23-11/16	6-1/4	19	20-5/8	3	1	1-15/16	3-1/2	14-19/32	9-3/8	7-1/8	15-1/8	1/2
4-7/16														
4-1/2	7-1/4	20-1/2	5-1/8	15-1/2	18-1/16	2-1/2	7/8	2-9/32	3-1/4	12-53/64	7-29/64	6-1/4	13-23/64	11/32
4-15/16														
5	9	23-11/16	6-1/4	19	20-5/8	3	1	1-15/16	3-1/2	14-19/32	9-3/8	7-1/8	15-1/8	1/2
5-7/16														
5-15/16	9	23-11/16	6-1/4	19	20-5/8	3	1	1-15/16	3-1/2	14-19/32	9-3/8	7-1/8	15-1/8	1/2

*EXP - Total Expansion Divided Equally On Both Sides Of Bearing (Expansion Bearings Only) **NOTE:** All sizes use a 1/8-27 NPT hydraulic grease fitting
Dowel Hole Locations For Precision Positioning - See Page -

FEATURES/BENEFITS PAGE B6-2	NOMENCLATURE PAGE B6-4	SELECTION PAGE B6-5	SELECTION/DIMENSIONS PAGE B6-8
--------------------------------	---------------------------	------------------------	-----------------------------------

SELECTION/DIMENSIONS



DOUBLE-INTERLOCK Flange Bearing - Inch

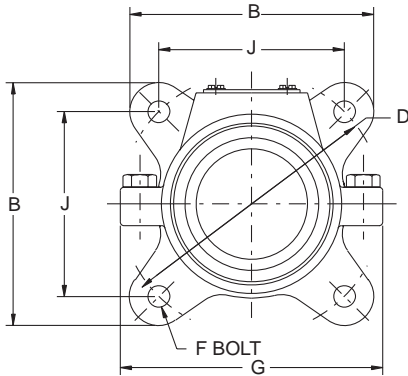
D-LOK

Type E Family

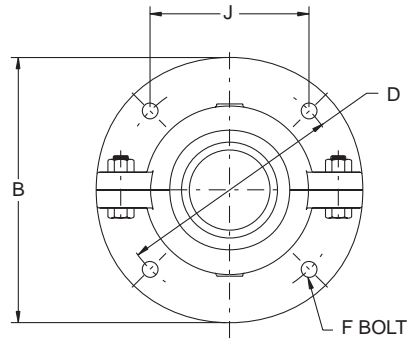
Specialty Tapered

S-2000

UNISPHERE II

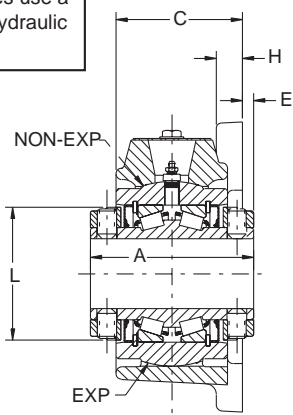


1-3/16" THRU 4" EXTERNAL CONSTRUCTION

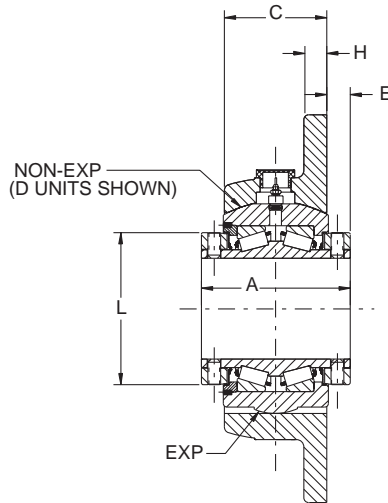


4-7/16" THRU 5" EXTERNAL CONSTRUCTION

NOTE: All sizes use a 1/8 - 27 NPT hydraulic grease fitting



1-3/16" THRU 3" INTERNAL CONSTRUCTION



3-3/16" THRU 5" INTERNAL CONSTRUCTION OF UNIT

* 4-7/16", 4-1/2", 4-15/16" & 5"
NON-EXPANSION HOUSINGS USE THE D UNIT
ALL OTHER HOUSING EXPANSION & NON-EXPANSION USE THE S1 UNIT

FEATURES/BENEFITS PAGE B6-2	NOMENCLATURE PAGE B6-4	SELECTION PAGE B6-5	SELECTION/DIMENSIONS PAGE B6-8
--------------------------------	---------------------------	------------------------	-----------------------------------

SELECTION/DIMENSIONS



DOUBLE-INTERLOCK Flange Bearing - Inch

DUCTILE IRON NON-EXPANSION			
SHAFT SIZE INCHES #	PART NUMBER	PART NAME	WEIGHT LBS (APPROX)
1-7/16	023425	F4B-DI-107R	9
1-15/16	023431	F4B-DI-115R	15
2	023432	F4B-DI-200R	15
2-3/16	023433	F4B-DI-203R	19
2-7/16	023435	F4B-DI-207R	22
2-1/2	023436	F4B-DI-208R	22
2-15/16	023439	F4B-DI-215R	32
3	023440	F4B-DI-300R	31
3-7/16	023443	F4B-DI-307R	53
3-15/16	023445	F4B-DI-315R	82
4-7/16 ◊	023447	F4B-DI-407R	158
4-1/2 ◊	023448	F4B-DI-408R	158
4-15/16 ◊	023449	F4B-DI-415R	220

DUCTILE IRON EXPANSION			
SHAFT SIZE INCHES #	PART NUMBER	PART NAME	WEIGHT LBS (APPROX)
1-7/16	023454	F4B-DI-107RE	9
1-15/16	023460	F4B-DI-115RE	15
2	023461	F4B-DI-200RE	15
2-3/16	023462	F4B-DI-203RE	19
2-7/16	023464	F4B-DI-207RE	22
2-1/2	023465	F4B-DI-208RE	22
2-15/16	023468	F4B-DI-215RE	32
3	023469	F4B-DI-300RE	31
3-7/16	023472	F4B-DI-307RE	53
3-15/16	023474	F4B-DI-315RE	82
4-7/16 ◊	023476	F4B-DI-407RE	158
4-1/2 ◊	023477	F4B-DI-408RE	158
4-15/16 ◊	023478	F4B-DI-415RE	220

Non-Expansion Furnished Unless Otherwise Specified

Consult DODGE For Sizes Not Listed.

◊ 4-7/16" - 5" Housings Are Made Of Cast Iron

SHAFT SIZE INCHES	A	B	C	D	E	F Bolt Dia.	G	H	J	L
1-7/16	3	5-3/4	2-1/8	6-1/4	5/16	1/2	5-3/4	1/2	4-27/64	2-3/4
1-15/16	3-1/2	6-7/8	2-9/16	7-1/2	3/8	5/8	7-1/4	9/16	5-5/16	3-7/16
2	3-3/4	7-3/16	2-23/32	8	7/16	5/8	7-13/16	9/16	5-21/32	3-3/4
2-3/16	4	7-5/8	2-15/16	8-1/2	7/16	5/8	8-9/16	5/8	6	4-1/16
2-7/16	4-1/2	8-7/8	3-11/32	9-3/4	1/2	3/4	9-1/2	11/16	6-57/64	4-23/32
2-1/2	5	10-1/4	3-23/32	11-1/2	1/2	7/8	11-3/8	3/4	8-1/8	5-1/2
2-15/16	6-1/4	11-7/16	4-5/8	13	3/4	1	12-7/8	13/16	9-3/16	6
3	6-3/4	17-3/4	4-5/8	15	1-1/16	1	-----	1	10-39/64	6-29/64
3-7/16	7-1/4	19	5	16	1-1/8	1-1/8	-----	1-1/8	11-5/16	7-29/64
3-15/16										
4-7/16										
4-1/2										
4-15/16										

NOTE: All sizes use a 1/8-27 NPT hydraulic grease fitting

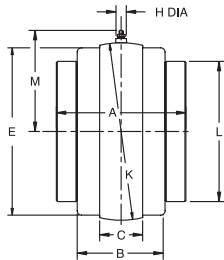
FEATURES/BENEFITS PAGE B6-2	NOMENCLATURE PAGE B6-4	SELECTION PAGE B6-5	SELECTION/DIMENSIONS PAGE B6-8
--------------------------------	---------------------------	------------------------	-----------------------------------



SELECTION/DIMENSIONS



DOUBLE-INTERLOCK Units - Inch



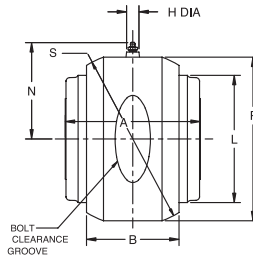
S-1 UNIT

Pillow Block

S-1 units are used in expansion and non-expansion pillow block housings

Flange

S-1 unit is used in expansion flange housings and non-expansion flange housings for 1-3/16 - 4"

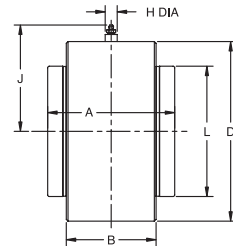


D UNIT

Flange

D units are used in non-expansion flange housings

- 4-7/16 - 5" bore size
- Formerly used in DOUBLE-INTERLOCK non-expansion flange bearing and pillow blocks thru 5 bore size prior to '78



B-1 UNIT

B-1 units can only be used in a customer manufactured housing and are often mounted in machines where bored holes can be provided. B-1 units can be used either as a non-expansion or expansion bearing by providing a suitable means of locating the unit axially. B-1 units will handle slight misalignment requirements. Shaft must be supported by another unit or bearing. For mounting in rotating wheels the Type C

B-1 units is preferred or consult the factory.

SHAFT SIZE INCHES	A	B	C	σ D	E		H	J	K	L	M	N	P	S
					MACH. SIDE	CAST SIDE								
1-3/16 1-1/4	2-3/4	1-7/8	1-1/32	3	2.813	2-9/32	**	2.42	3.125 •	2-1/4	2.03	---	---	---
1-3/8 1-7/16	3	2-1/16	1-5/32	3-7/16	3.250	3-5/16	11/16	2.54	3.625 •	2-3/4	2.64	2-7/8	3-5/8	3.844 •
1-1/2 1-5/8 1-11/16	3-3/8	2-5/16	1-3/16	3-15/16	3.750	3-13/16	11/16	2.79	4.125 •	3-3/16	2.89	3-1/8	4-3/32	4.344 •
1-3/4 1-7/8 1-15/16 2	3-1/2	2-7/16	1-1/2	4-1/4	4.125	4-3/16	11/16	2.95	4.562 •	3-7/16	3.10	3-1/4	4-7/16	4.656 •
2-3/16 2-1/4 2-7/16 2-1/2	3-3/4	2-9/16	1-9/16	45/8	4.500	4-5/8	11/16	3.13	5.000 •	3-3/4	3.32	3-7/16	4-23/32	5.000 •
2-11/16 2-3/4 2-15/16 3	4-1/2	3	1-7/8	5-7/8	5.563	5-5/8	11/16	3.76	6.061 •	4-23/32	3.85	4	5-13/16	6.094 •
3-3/16 3-1/4 3-7/16 3-1/2	5	3-1/2	2	7-1/8	6.813	6-7/8	11/16	4.38	7.373#	5-1/2	4.51	4-11/16	7-7/32	7.500 ^
3-15/16 4	6-1/4	4-1/2	2-3/8	7-7/8	7.438	7-1/2	*	5.48	7.997#	6	5.16	5-1/8	8-1/8	8.375 ^
4-7/16 4-1/2	6-3/4	4-5/8	2-3/8	8-3/4	8.313	8-3/8	*	5.91	8.872#	6-29/64	5.60	5-1/2	8-7/8	9.125 ^
4-15/16 5	7-1/4	5-1/8	2-7/8	10-1/8	9.563	9-5/8	*	6.6	10.184#	7-29/64	6.26	6-3/16	10-1/4	10.500 ^
5-7/16 5-15/16 6	9	6-1/16	2-7/8	---	11.188	11-3/16	15/16	---	11.874	9-3/8	7.10	---	---	---
6-7/16 6-1/2 6-15/16 7	10-1/2	7-1/8	3	---	13.25	13-1/4	15/16	---	14.248	11-3/8	8.29	---	---	---

* 11/16" DIA ON D UNITS; 15/16" ON S-1 UNITS AND 3/4 HEX ON B-1 UNITS

** 11/16" DIA ON B-1 UNITS; 7/16" DIA ON S-1 UNITS

• +.000 TO .001"
±.0005"

σ +.000 TO -.002"
+.000 TO -.003"

FEATURES/BENEFITS PAGE B6-2	NOMENCLATURE PAGE B6-4	SELECTION PAGE B6-5	SELECTION/DIMENSIONS PAGE B6-8
--------------------------------	---------------------------	------------------------	-----------------------------------

SELECTION/DIMENSIONS



DOUBLE-INTERLOCK Units - Inch

"S-1" UNITS -- GRAY IRON 1-3/16" thru 3"			
SHAFT SIZE INCHES #	PART NUMBER	PART NAME	WEIGHT LBS (APPROX)
1-3/16	023507	S1U-DI-103R	3
1-1/4	023508	S1U-DI-104R	4
1-3/8	023509	S1U-DI-106R	5
1-7/16	023510	S1U-DI-107R	5
1-1/2	023511	S1U-DI-108R	7
1-5/8	023512	S1U-DI-110R	7
1-11/16	023513	S1U-DI-111R	7
1-3/4	023514	S1U-DI-112R	8
1-7/8	023515	S1U-DI-114R	8
1-15/16	023516	S1U-DI-115R	8
2	023517	S1U-DI-200R	8
2-3/16	023518	S1U-DI-203R	10
2-1/4	023519	S1U-DI-204R	12
2-7/16	023520	S1U-DI-207R	11
2-1/2	023521	S1U-DI-208R	11
2-11/16	023522	S1U-DI-211R	18
2-3/4	023523	S1U-DI-212R	17
2-15/16	023524	S1U-DI-215R	17
3	023525	S1U-DI-300R	17

Consult DODGE For Sizes Not Listed.

"D" UNITS -- GRAY IRON			
SHAFT SIZE INCHES #	PART NUMBER	PART NAME	WEIGHT LBS (APPROX)
1-3/16	-----	DU-DI-103R	-----
1-1/4	-----	DU-DI-104R	-----
1-3/8	023480	DU-DI-106R	5
1-7/16	023481	DU-DI-107R	5
1-1/2	023482	DU-DI-108R	8
1-5/8	023483	DU-DI-110R	7
1-11/16	023484	DU-DI-111R	7
1-3/4	023485	DU-DI-112R	8
1-7/8	023486	DU-DI-114R	8
1-15/16	023487	DU-DI-115R	8
2	023488	DU-DI-200R	8
2-3/16	023489	DU-DI-203R	9
2-1/4	023490	DU-DI-204R	12
2-7/16	023491	DU-DI-207R	12
2-1/2	023492	DU-DI-208R	12
2-11/16	023493	DU-DI-211R	18
2-3/4	023494	DU-DI-212R	17
2-15/16	023495	DU-DI-215R	16
3	023496	DU-DI-300R	16
3-3/16	023497	DU-DI-303R	32
3-1/4	023498	DU-DI-304R	31
3-7/16	023499	DU-DI-307R	30
3-1/2	023500	DU-DI-308R	29
3-15/16	023501	DU-DI-315R	46
4	023502	DU-DI-400R	43
4-7/16	023503	DU-DI-407R	57
4 1/2	023504	DU-DI-408R	64
4-15/16	023505	DU-DI-415R	85
5	023506	DU-DI-500R	85

Consult DODGE For Sizes Not Listed.

"S-1" UNITS -- GRAY IRON 3-3/16" thru 7"			
SHAFT SIZE INCHES #	PART NUMBER	PART NAME	WEIGHT LBS (APPROX)
3-3/16	023526	S1U-DI-303R	34
3-1/4	023527	S1U-DI-304R	31
3-7/16	023528	S1U-DI-307R	31
3-1/2	023529	S1U-DI-308R	31
3-15/16	023530	S1U-DI-315R	43
4	023531	S1U-DI-400R	43
4-7/16	023532	S1U-DI-407R	57
4-1/2	023533	S1U-DI-408R	64
4-15/16	023534	S1U-DI-415R	82
5	023535	S1U-DI-500R	82
5-7/16	023536	S1U-DI-507R	159
5-15/16	023537	S1U-DI-515R	135
6	023538	S1U-DI-600R	128
6-7/16	023539	S1U-DI-607R	187
6-1/2	023540	S1U-DI-608R	182
6-15/16	023541	S1U-DI-615R	180
7	023542	S1U-DI-700R	178

Consult DODGE For Sizes Not Listed.

"B-1" UNITS -- GRAY IRON			
SHAFT SIZE INCHES #	PART NUMBER	PART NAME	WEIGHT LBS (APPROX)
1-3/16	023543	BIU-DI-103R	3
1-3/8	023545	BIU-DI-106R	5
1-7/16	023546	BIU-DI-107R	5
1-1/2	023547	BIU-DI-108R	6
1-5/8	023548	BIU-DI-110R	6
1-3/4	023550	BIU-DI-112R	8
1-15/16	023552	BIU-DI-115R	8
2	023553	BIU-DI-200R	7
2-3/16	023554	BIU-DI-203R	9
2-7/16	023556	BIU-DI-207R	12
2-1/2	023557	BIU-DI-208R	11
2-11/16	023558	BIU-DI-211R	17
2-3/4	023559	BIU-DI-212R	17
2-15/16	023560	BIU-DI-215R	17
3	023561	BIU-DI-300R	17
3-7/16	023564	BIU-DI-307R	30
3-1/2	023565	BIU-DI-308R	30
3-15/16	023566	BIU-DI-315R	45
4	023567	BIU-DI-400R	44
4-7/16	023568	BIU-DI-407R	58
4 1/2	023569	BIU-DI-408R	64
4-15/16	023570	BIU-DI-415R	87
5	023571	BIU-DI-500R	86

Consult DODGE For Sizes Not Listed.

NOTE: All sizes use a 1/8-27 NPT hydraulic grease fitting

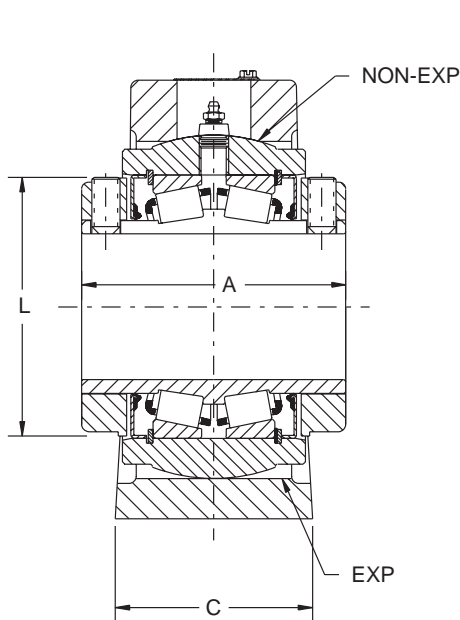
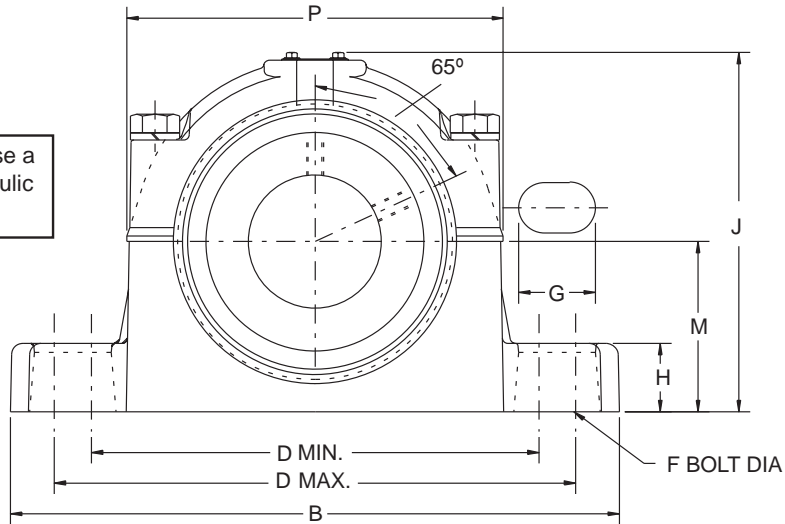
FEATURES/BENEFITS PAGE B6-2	NOMENCLATURE PAGE B6-4	SELECTION PAGE B6-5	SELECTION/DIMENSIONS PAGE B6-8
--------------------------------	---------------------------	------------------------	-----------------------------------

SELECTION/DIMENSIONS

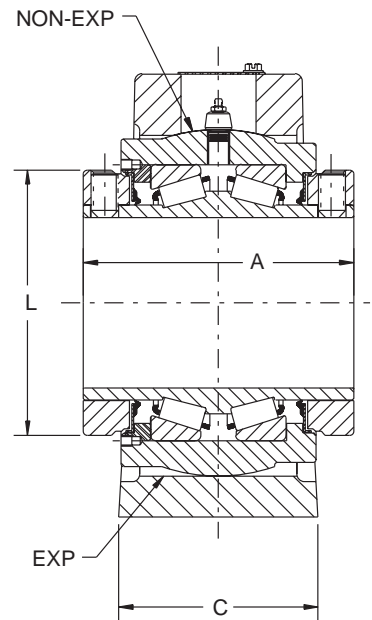


TAF Pillow Block - Inch 2-BOLT BASE

NOTE: All sizes use a 1/8 - 27 NPT hydraulic grease fitting



1-7/16" THRU 3" CONSTRUCTION



3-7/16" THRU 3-1/2" CONSTRUCTION

FEATURES/BENEFITS
PAGE B6-2

NOMENCLATURE
PAGE B6-4

SELECTION
PAGE B6-5

SELECTION/DIMENSIONS
PAGE B6-8

SELECTION/DIMENSIONS



TAF Pillow Block - Inch 2-BOLT BASE

GRAY IRON NON-EXPANSION						
SHAFT SIZE INCHES #	SHAFT SIZE SYMBOL	SAF HOUSING NUMBER	PILLOW BLOCK ASSY	HOUSING ONLY	BEARING INNER UNIT	PIL. BLK. WT. APRX LBS
1-7/16	107	509	037580	037540	037632	12
1-11/16	111	510	037581	037541	037633	15
1-15/16	115	511	037582	037542	037634	17
2-3/16	203	513	037583	037543	037635	25
2-7/16	207	515	037584	037544	037636	30
2-1/2	208		037585	037544	037637	30
2-11/16	211	516	037586	037545	037638	38
2-3/4	212		037587	037545	037639	38
2-15/16	215	517	037588	037546	037640	45
3	300		037589	037546	037641	44
3-7/16	307	520	037590	037547	037642	71
3-1/2	308		037591	037547	037643	70

GRAY IRON EXPANSION						
SHAFT SIZE INCHES #	SHAFT SIZE SYMBOL	SAF HOUSING NUMBER	PILLOW BLOCK ASSY	HOUSING ONLY	BEARING INNER UNIT	PIL. BLK. WT. APRX LBS
1-7/16	107	509	037592	037555	037632	12
1-11/16	111	510	037593	037556	037633	15
1-15/16	115	511	037594	037557	037634	17
2-3/16	203	513	037595	037558	037635	25
2-7/16	207	515	037596	037559	037636	30
2-1/2	208		037597	037559	037637	30
2-11/16	211	516	037598	037560	037638	38
2-3/4	212		037599	037560	037639	38
2-15/16	215	517	037600	037561	037640	45
3	300		037601	037561	037641	44
3-7/16	307	520	037602	037562	037642	71
3-1/2	308		037603	037562	037643	70

Non-Expansion Furnished Unless Otherwise Specified.

Consult DODGE For Sizes Not Shown

SHAFT SIZE INCHES	SAF SERIES	A	B	C	D		F BOLT DIA	G	H	J	L	M	P	EXP*
					MIN.	MAX.								
1-7/16	509	3	8-1/4	2-3/16	6-1/4	7	1/2	15/16	7/8	5-7/64	2-3/4	2-1/4	5-33/64	3/32
1-11/16	510	3-3/8	8-1/4	2-3/8	6-1/2	7	1/2	7/8	1-1/32	5-5/8	3-3/16	2-1/2	5-13/16	3/32
1-15/16	511	3-1/2	9-5/8	2-3/4	7-3/8	8-1/4	5/8	1-13/64	1-1/32	6-9/64	3-7/16	2-3/4	6-23/64	9/32
2-3/16	513	3-3/4	11	3-1/4	8-21/32	9-1/2	5/8	1-7/16	1-1/32	6-33/64	3-3/4	3	6-61/64	9/32
2-7/16	515	4	11-1/8	3-1/8	8-5/8	9-5/8	5/8	1-17/64	1-1/4	7-1/32	4-1/16	3-1/4	7-3/8	9/32
2-1/2														
2-11/16	516	4-1/2	12-19/32	3-1/2	9-7/8	11	3/4	1-7/16	1	7-43/64	4-23/32	3-1/2	8-5/16	9/32
2-3/4														
2-15/16	517	4-1/2	12-19/32	3-1/2	9-7/8	11	3/4	1-7/16	1-1/4	7-59/64	4-23/32	3-3/4	8-5/16	9/32
3														
3-7/16	520	5	15-3/8	4-11/32	11-13/16	13-1/8	7/8	1-21/32	1-21/32	9-27/64	5-1/2	4-1/2	10-3/32	9/32
3-1/2														

*EXP Total Expansion Divided Equally On Both Sides Of Bearing (Expansion Bearing Only).

NOTE: All sizes use a 1/8-27 NPT hydraulic grease fitting

FEATURES/BENEFITS PAGE B6-2	NOMENCLATURE PAGE B6-4	SELECTION PAGE B6-5	SELECTION/DIMENSIONS PAGE B6-8
--------------------------------	---------------------------	------------------------	-----------------------------------

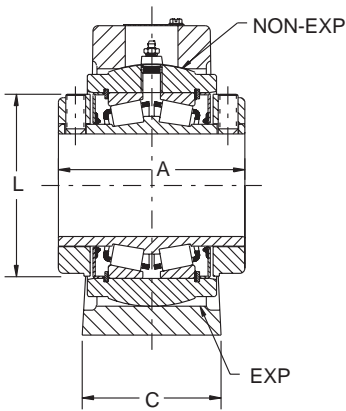
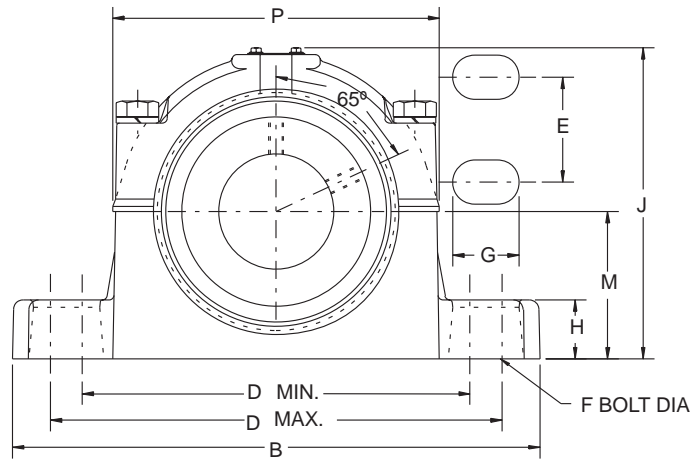


SELECTION/DIMENSIONS

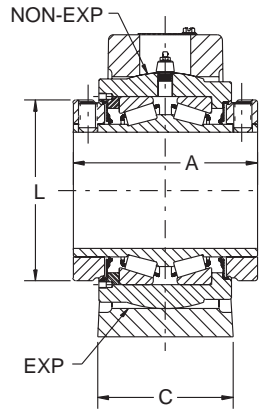


TAF Pillow Block - Inch 4-BOLT BASE

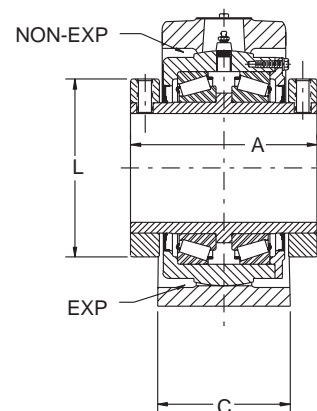
NOTE: All sizes use a 1/8 - 27 NPT hydraulic grease fitting



2-7/16" THRU 3"
CONSTRUCTION



3-7/16" THRU 5"
CONSTRUCTION



5-7/16" THRU 7"
CONSTRUCTION

FEATURES/BENEFITS
PAGE B6-2

NOMENCLATURE
PAGE B6-4

SELECTION
PAGE B6-5

SELECTION/DIMENSIONS
PAGE B6-8

SELECTION/DIMENSIONS



TAF Pillow Block - Inch 4-BOLT BASE

GRAY IRON NON-EXPANSION						
SHAFT SIZE INCHES #	SHAFT SIZE SYMBOL	SAF HOUSING NUMBER	PILLOW BLOCK ASSY	HOUSING ONLY	BEARING INNER UNIT	PIL. BLK. WT. APRX LBS
2-7/16	207	515	037604	037548	037636	30
2-1/2	208	515	037605	037548	037637	30
2-11/16	211	516	037606	037549	037638	38
2-3/4	212	516	037607	037549	037639	38
2-15/16	215	517	037608	037550	037640	45
3	300	517	037609	037550	037641	44
3-7/16	307	520	037610	037551	037642	71
3-1/2	308	520	037611	037551	037643	70
3-15/16	315	522	037612	037552	037644	110
4	400	522	037613	037552	037645	110
4-7/16	407	526	037614	037553	037646	140
4-1/2	408	526	037615	037553	037647	140
4-15/16	415	528	037616	037554	037648	180
5	500	528	037617	037554	037649	180
5-7/16	507	532	023584	042628	023610	300
5-15/16	515	534	023585	042630	023611	300
6	600	534	023586	042630	023612	300
6-7/16	607	536	023587	042632	023613	510
6-1/2	608	536	023588	042632	023614	510
6-15/16	615	538	023589	042634	023615	520
7	700	538	023590	042634	023616	0520

GRAY IRON EXPANSION						
SHAFT SIZE INCHES #	SHAFT SIZE SYMBOL	SAF HOUSING NUMBER	PILLOW BLOCK ASSY	HOUSING ONLY	BEARING INNER UNIT	PIL. BLK. WT. APRX LBS
2-7/16	207	515	037618	037563	037636	30
2-1/2	208	515	037619	037563	037637	30
2-11/16	211	516	037620	037564	037638	38
2-3/4	212	516	037621	037564	037639	38
2-15/16	215	517	037622	037565	037640	45
3	300	517	037623	037565	037641	44
3-7/16	307	520	037624	037566	037642	71
3-1/2	308	520	037625	037566	037643	70
3-15/16	315	522	037626	037567	037644	110
4	400	522	037627	037567	037645	110
4-7/16	407	526	037628	037568	037646	140
4-1/2	408	526	037629	037568	037647	140
4-15/16	415	528	037630	037569	037648	180
5	500	528	037631	037569	037649	180
5-7/16	507	532	023603*	042627*	023610	300
5-15/16	515	534	023604*	042629*	023611	300
6	600	534	023605*	042629*	023612	300
6-7/16	607	536	023606*	042631*	023613	510
6-1/2	608	536	023607*	042631*	023614	510
6-15/16	615	538	023608*	042633*	023615	520
7	700	538	023609*	042633*	023616	520

Non-Expansion Furnished Unless Otherwise Specified
Consult DODGE For Sizes Not Shown

SHAFT SIZE	SAF SERIES	A	B	C	D		E	F BOLT DIA	G	H	J	L	M	P	EXP*
					MIN.	MAX.									
2-7/16	515	4	11-1/8	3-1/8	8-5/8	9-5/8	1-7/8	1/2	1-1/8	1-1/4	7-1/32	4-1/16	3-1/4	7-3/8	9/32
2-1/2					8-5/8	9-5/8	1-7/8	1/2	1-1/8	1-1/4	7-1/32	4-1/16	3-1/4	7-3/8	9/32
2-11/16	516	4-1/2	12-19/32	3-1/2	9-7/8	11	2-1/8	5/8	1-21/64	1	7-43/64	4-23/32	3-1/2	8-5/16	9/32
2-3/4					9-7/8	11	2-1/8	5/8	1-21/64	1	7-43/64	4-23/32	3-1/2	8-5/16	9/32
2-15/16	517	4-1/2	12-19/32	3-1/2	9-7/8	11	2-1/8	5/8	1-21/64	1-1/4	7-59/64	4-23/32	3-3/4	8-5/16	9/32
3					9-7/8	11	2-1/8	5/8	1-21/64	1-1/4	7-59/64	4-23/32	3-3/4	8-5/16	9/32
3-7/16	520	5	15-3/8	4-11/32	11-5/8	13-1/8	2-3/8	3/4	1-5/8	1-21/32	9-27/64	5-1/2	4-1/2	10-3/32	9/32
3-1/2					11-5/8	13-1/8	2-3/8	3/4	1-5/8	1-21/32	9-27/64	5-1/2	4-1/2	10-3/32	9/32
3-15/16	522	6-1/4	16-1/2	4-3/4	12-19/32	14-1/2	2-3/4	3/4	1-53/64	1-25/32	10-23/64	6	4-15/16	10-45/64	11/32
4					12-19/32	14-1/2	2-3/4	3/4	1-53/64	1-25/32	10-23/64	6	4-15/16	10-45/64	11/32
4-7/16	526	6-3/4	18-3/8	5-1/8	14-1/2	16	3-1/4	7/8	1-3/4	2-1/16	11-53/64	6-29/64	6	12-29/64	11/32
4-1/2					14-1/2	16	3-1/4	7/8	1-3/4	2-1/16	11-53/64	6-29/64	6	12-29/64	11/32
4-15/16	528	7-1/4	19-45/64	5-7/8	15-5/8	17-3/8	3-3/8	1	2	2-1/16	12-37/64	7-29/64	6	13-23/64	11/32
5					15-5/8	17-3/8	3-3/8	1	2	2-1/16	12-37/64	7-29/64	6	13-23/64	11/32
5-7/16	532	9	21- 21/32	6-1/4	17-5/8	19-1/4	3-3/4	1	1-59/64	2-11/32	14	9-3/8	6-11/16	15-1/8	13/32
5-15/16					17-5/8	19-1/4	3-3/4	1	1-59/64	2-11/32	14	9-3/8	6-11/16	15-1/8	13/32
6	534	9	24-3/4	6-3/4	19	21-5/8	4-1/4	1	2-7/16	2-7/8	14-3/8	9-3/8	7-1/16	15-1/8	13/32
6-7/16					19	21-5/8	4-1/4	1	2-7/16	2-7/8	14-3/8	9-3/8	7-1/16	15-1/8	13/32
6-1/2	536	10-1/2	26-3/4	7-1/8	21	23-5/8	4-5/8	1	2-7/16	3	16-3/16	11-3/8	7-1/2	18-5/16	13/32
6-15/16					21	23-5/8	4-5/8	1	2-7/16	3	16-3/16	11-3/8	7-1/2	18-5/16	13/32
7	538	10-1/2	28	7-1/2	21-5/8	24-3/8	4-1/2	1-1/4	2-3/4	3-1/8	16-9/16	11-3/8	7-7/8	18-5/16	13/32
7					21-5/8	24-3/8	4-1/2	1-1/4	2-3/4	3-1/8	16-9/16	11-3/8	7-7/8	18-5/16	13/32

*EXP - Total Expansion Divided Equally On Both Sides Of Bearing (Expansion Bearings Only)

Note: All sizes use a 1/8-27 NPT hydraulic grease fitting

FEATURES/BENEFITS PAGE B6-2	NOMENCLATURE PAGE B6-4	SELECTION PAGE B6-5	SELECTION/DIMENSIONS PAGE B6-8
--------------------------------	---------------------------	------------------------	-----------------------------------

SELECTION/DIMENSIONS



TAF Units - Inch

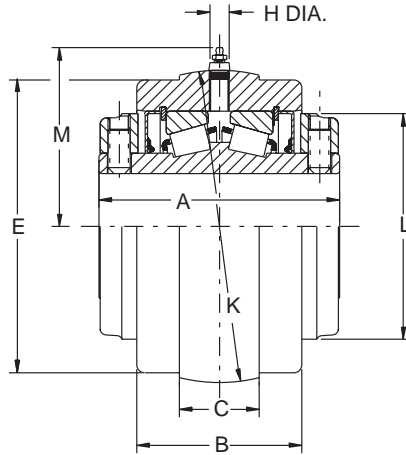
D-LOK

Type E Family

Specialty Tapered

S-2000

UNISPHERE II

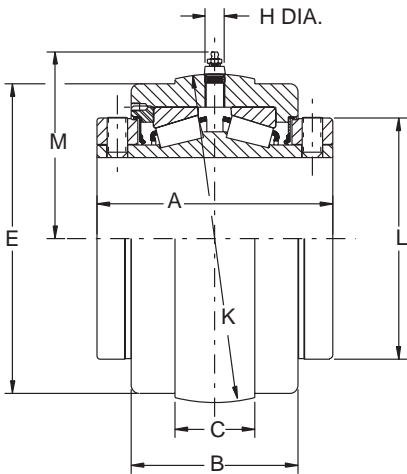


NOTE: All sizes use a 1/8 - 27 NPT hydraulic grease fitting

TAF S1 Unit Is Used In All Expansion And Non-Expansion TAF Housings

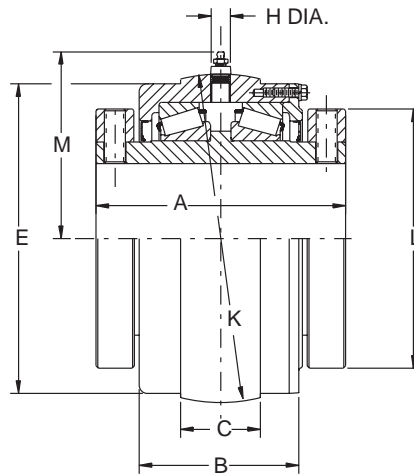
S-1 UNIT

1-7/16" THRU 3" CONSTRUCTION



S-1 UNIT

3-3/16" THRU 5" CONSTRUCTION



S-1 UNIT

5-7/16" THRU 7" CONSTRUCTION

FEATURES/BENEFITS PAGE B6-2	NOMENCLATURE PAGE B6-4	SELECTION PAGE B6-5	SELECTION/DIMENSIONS PAGE B6-8
--------------------------------	---------------------------	------------------------	-----------------------------------

SELECTION/DIMENSIONS



TAF Units - Inch

"S-1" UNITS - GRAY IRON			
SHAFT SIZE # INCHES	PART NUMBER	PART NAME	WEIGHT LBS (APPROX)
1-7/16	037632	S1U509-TAF-107	5
1-11/16	037633	S1U510-TAF-111	7
1-15/16	037634	S1U511-TAF-115	8
2-3/16	037635	S1U513-TAF-203	9
2-7/16	037636	S1U515-TAF-207	11
2- 1/2	037637	S1U515-TAF-208	11
2-11/16	037638	S1U516-TAF-211	18
2-3/4	037639	S1U516-TAF-212	17
2-15/16	037640	S1U517-TAF-215	17
3	037641	S1U517-TAF-300	17
3-7/16	037642	S1U520-TAF-307	31
3-1/2	037643	S1U520-TAF-307	31
3-15/16	037644	S1U522-TAF-315	43
4	037645	S1U522-TAF-400	43
4-7/16	037646	S1U526-TAF-407	57
4-1/2	037647	S1U526-TAF-408	68
4-15/16	037648	S1U528-TAF-415	82
5	037649	S1U528-TAF-500	82
5-7/16	023610	S1U-TAF-507R	155
5-15/16	023611	S1U-TAF-515R	143
6	023612	S1U-TAF-600R	138
6-7/16	023613	S1U-TAF-607R	187
6-1/2	023614	S1U-TAF-608R	182
6-15/16	023615	S1U-TAF-615R	180
7	023616	S1U-TAF-700R	178

NOTE: TAF inserts below 5-7/16" are not interchangeable with TAF-XT housings, with shafts of 5" or less, order DOUBLE-INTERLOCK S-1 units on Page B6-50

SHAFT SIZE INCHES	A	B	C	E		H	K	L	M
				MACH. SIDE	CAST SIDE				
1-7/16	3	2-1/16	1-5/32	3.250	3.31	3/4	3.595 •	2-3/4	2-1/2
1-11/16	3-3/8	2-5/16	1-3/16	3.750	3.81	3/4	4.095 •	3-3/16	2-7/8
1-15/16	3-1/2	2-7/16	1-1/2	4.125	4.18	3/4	4.502 •	3-7/16	2-3/4
2-3/16	3-3/4	2-9/16	1-9/16	4.500	4.56	3/4	4.940 •	3-3/4	2-61/64
2-7/16	4	2-3/4	1-7/16	4.812	4.87	3/4	5.156 •	4-1/16	3-3/8
2- 1/2									
2-15/16	4-1/2	3	1-7/8	5.563	5.63	3/4	6.001 •	4-23/32	3-7/8
3									
3-7/16	5	3-1/2	2-3/16	6.813	6.88	3/4	7.313 *	5-1/2	4-1/2
3-1/2									
3-15/16	6-1/4	4-1/2	2-19/32	7.438	7.40	15/16	7.937 *	6	5-1/8
4									
4-7/16	6-3/4	4-5/8	2-9/16	8.313	8.32	15/16	8.812 *	6-29/64	5-1/2
4-1/2									
4-15/16	7-1/4	5-1/8	3-1/8	9.563	9.54	15/16	10.124 *	7-29/64	6-3/16
5									
5-7/16	9	5-7/8	2-9/16	11.190	11.19	15/16	11.563 ^	9-3/8	6-29/32
5-15/16									
6									
6-7/16	10-1/2	7-1/8	3	13.250	13.25	15/16	13.748 ^	11-3/8	8
6-1/2									
6-15/16									
7									

• +.000,-.001"

^ .000,-.003"

* +.0005

Consult DODGE For Sizes Not Listed

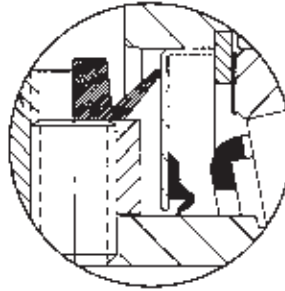
FEATURES/BENEFITS PAGE B6-2	NOMENCLATURE PAGE B6-4	SELECTION PAGE B6-5	SELECTION/DIMENSIONS PAGE B6-8
--------------------------------	---------------------------	------------------------	-----------------------------------

SELECTION/DIMENSIONS

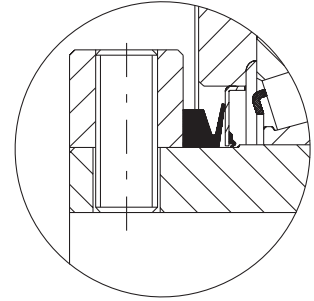


Type E / Type K / DOUBLE-INTERLOCK /TAF E-TECT SEAL KITS

SHAFT SIZE INCHES	KIT PART NUMBER
1-3/16 TO 1-1/4	037650*
1-3/8 TO 1-7/16	037651*
1-1/2 TO 1-11/16	037652*
1-3/4 TO 2	037653*
2-3/16	037654*
2-1/4 TO 2-1/2	037655*
2-11/16 TO 3	037656*
3-3/16 TO 3-1/2	037657*
3-15/16 TO 4	037658*
4-7/16 TO 4-1/2	037659*
4-15/16 TO 5	037660*
5-7/16 TO 6	037673**
6-7/16 TO 7	037674**



1-3/16 THRU 5"



5-7/16 THRU 7"

* Kit includes one collar, set screws and seal

** Kit for 5-7/16" consists of a modified v-ring seal. This seal can only be used with bearings produced after September 1995

D-LOK

Type E Family

Specialty Tapered

S-2000

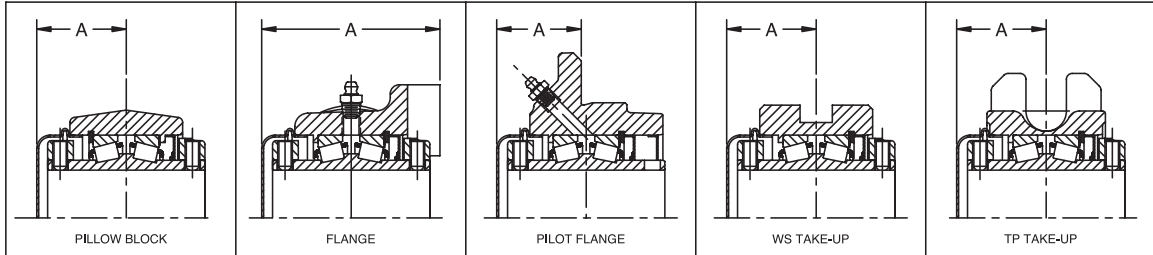
UNISPHERE II

FEATURES/BENEFITS PAGE B6-2	NOMENCLATURE PAGE B6-4	SELECTION PAGE B6-5	SELECTION/DIMENSIONS PAGE B6-8
--------------------------------	---------------------------	------------------------	-----------------------------------

SELECTION/DIMENSIONS



Type E TYPE E END CLOSURE KITS - INCH



** Seal must be removed before installing the end cover

SHAFT SIZE Δ Inches	KIT* PART NO.	"A" DIMENSION (INCH)				
		PILLOW BLOCK	FLANGE	PILOT FLANGE	WS TAKE-UP	TP TAKE-UP
1-3/16 TO 1-1/4	023795	1-9/16	2-31/32	1-15/32	----	----
1-3/8 TO 1-7/16	023796	1-11/32	3-7/32	1-21/32	1-21/32	----
1-1/2 TO 1-11/16	023797	1-57/64	3-43/64	1-47/64	1-55/64	----
1-3/4 TO 2	023798	1-61/64	3-51/64	1-47/64	1-59/64	1-63/64
2-3/16	023799	2-3/32	4-1/16	1-7/8	2-1/16	2-1/16
2-1/4 TO 2-1/2	023800	2-1/4	4-3/8	2	2-3/16	2-5/16
2-11/16 TO 3	023801	2-7/16	4-7/8	2-3/16	2-7/16	2-7/16

Δ - Consult DODGE For Sizes Not Listed.

* - Kit Includes End Closure And Special Collar.

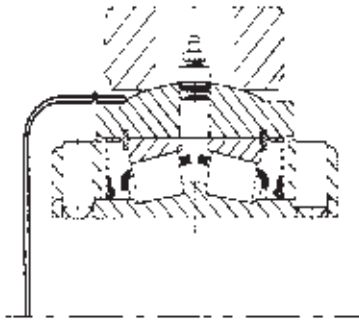
FEATURES/BENEFITS PAGE B6-2	NOMENCLATURE PAGE B6-4	SELECTION PAGE B6-5	SELECTION/DIMENSIONS PAGE B6-8
--------------------------------	---------------------------	------------------------	-----------------------------------

SELECTION/DIMENSIONS



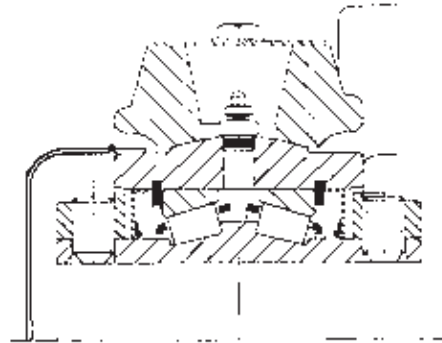
Type K, DOUBLE-INTERLOCK and TAF End Covers

- A -



DOUBLE-INTERLOCK SHOWN
K, D-1 & TAF

- A -



DOUBLE-INTERLOCK SHOWN
K & DI

SHAFT SIZE INCHES	PART NUMBER	"A" DIMENSION	
		PILLOW BLOCK	FLANGE BEARING
1-3/8 TO 1-7/16	037681	1-21/32	2-27/32
1-1/2 TO 1-11/16	037682	1-55/64	3-11/64
1-3/4 TO 2	037683	1-59/64	3-19/64
2-3/16	037684	2-1/16	3-1/2
2-1/4 TO 2-1/2	037685	2-3/16	3-3/4
2-11/16 TO 3	037686	2-7/16	4-3/16
3-3/16 TO 3-1/2	037687	2-11/16	4-15/16
3-5/16 TO 4	037688	3-5/16	5-13/16
4-7/16 TO 4-1/2	037689	3-9/16	5-7/8
4-15/16 TO 5	037690	3-13/16	6-5/16

END CLOSURE MOUNTS ON MACHINED OD SIDE OF S-1 UNIT

FEATURES/BENEFITS
PAGE B6-2

NOMENCLATURE
PAGE B6-4

SELECTION
PAGE B6-5

SELECTION/DIMENSIONS
PAGE B6-8