

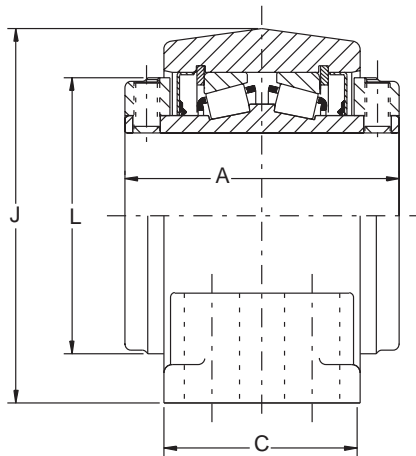
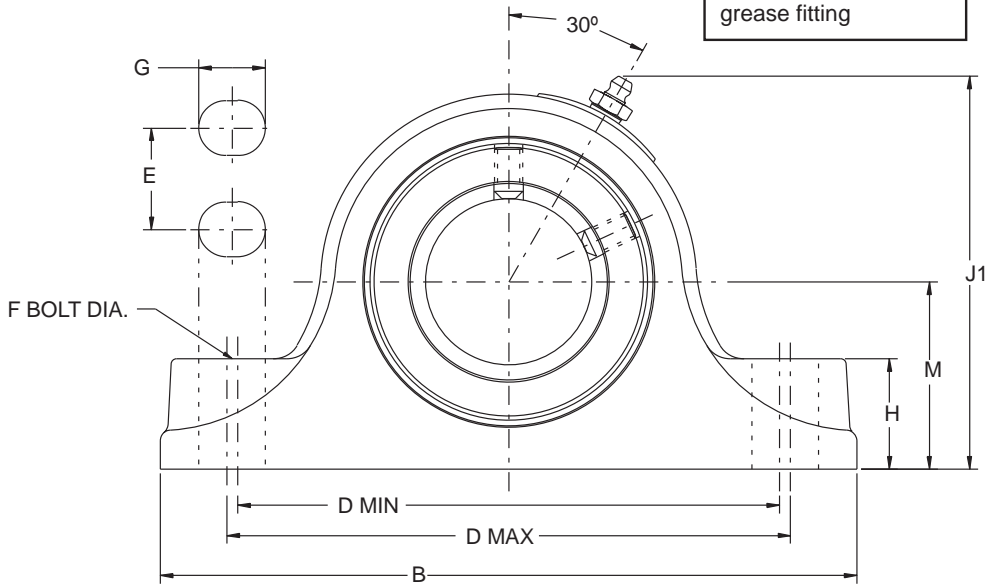


SELECTION/DIMENSIONS

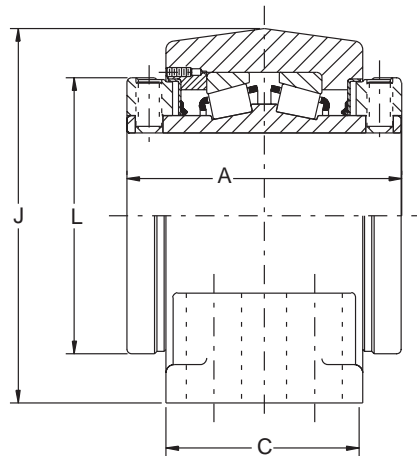


Type E - Plummer Block - Metric 2 & 4 BOLT BASE

NOTE: All sizes use a 1/8 - 27 NPT hydraulic grease fitting



35mm THRU 75mm CONSTRUCTION



80mm THRU 125mm CONSTRUCTION

D-LOK

Type E Family

Specialty Tapered

S-2000

UNISPHERE II

FEATURES/BENEFITS PAGE B6-2	NOMENCLATURE PAGE B6-4	SELECTION PAGE B6-5	SELECTION/DIMENSIONS PAGE B6-8
--------------------------------	---------------------------	------------------------	-----------------------------------

SELECTION/DIMENSIONS



Type E - Plummer Block - Metric

TYPE E PLUMMER BLOCKS, 2-BOLT

SHAFT SIZE (mm)	PART NUMBER	PART NAME	WEIGHT LBS. (APPROX.)
35mm	023620	P2B-E-035MR	7
40mm	023621	P2B-E-040MR	10
45mm	023622	P2B-E-045MR	12
50mm	023623	P2B-E-050MR	12
55mm	023624	P2B-E-055MR	15
60mm	023625	P2B-E-060MR	20
65mm	023626	P2B-E-065MR	20
70mm	023627	P2B-E-070MR	29
75mm	023628	P2B-E-075MR	27
80mm	023629	P2B-E-080MR	49
85mm	023630	P2B-E-085MR	47
90mm	023631	P2B-E-090MR	45

TYPE E PLUMMER BLOCKS, 4-BOLT

SHAFT SIZE (mm)	PART NUMBER	PART NAME	WEIGHT LBS. (APPROX.)
100mm	023632	P4B-E-100MR	69
110mm	023633	P4B-E-110MR	85
115mm	023634	P4B-E-115MR	91
125mm	023635	P4B-E-125MR	136
135mm	023636	P4B-E-135MR	245
140mm	023637	P4B-E-140MR	240
150mm	023638	P4B-E-150MR	235
160mm	023639	P4B-E-160MR	355
170mm	023640	P4B-E-170MR	345
180mm	023641	P4B-E-180MR	345

TYPE E PLUMMER BLOCKS, 2-BOLT BASE

SHAFT SIZE (mm)	A	B	C	D		F Bolts	G	H	J1	L	M
				Min.	Max.						
35mm	76.2	187.0	54.0	142.8	149.2	M12	19	29	101.6	70	47.6
40mm	85.7	200.0	60.0	155.5	161.9	M12	19	32	113.5	81	54.0
45mm	88.9	225.0	64.0	174.6	181.0	M16	22	33	119	87	57.2
50mm											
55mm	95.3	244.0	67.0	193.7	200.0	M16	22	38	131.4	95	63.5
60mm	101.6	267.0	73.0	212.7	219.0	M16	22	41	142.8	103	69.9
65mm											
70mm	114.3	305.0	76.0	236.5	246.0	M20	27	48	161.1	120	79.4
75mm											
80mm	127.0	356.0	89.0	274.6	284.2	M20	30	57	190.5	139.7	95.3
85mm											
90mm											

TYPE E PLUMMER BLOCKS, 4-BOLT BASE

SHAFT SIZE (mm)	A	B	C	D		E	F Bolts	G	H	J1	L	M
				Min.	Max.							
100mm	158.8	387	114	311.2	323.9	57.2	M20	28	62	216	152.4	108.0
110mm	171.5	422	117	336.6	349.3	63.5	M20	28	70	238	164	120.7
115mm												
125mm	184.2	470	130	387.4	400.0	73.0	M24	32	76	276	189	139.7
135mm	228.6	559	159	441.3	485.8	95.3	M24	51	83	335	238	169.9
140mm												
150mm												
160mm	266.7	660	181	539.8	590.6	117.5	M24	51	94	379	289	190.5
170mm												
180mm												

FEATURES/BENEFITS PAGE B6-2	NOMENCLATURE PAGE B6-4	SELECTION PAGE B6-5	SELECTION/DIMENSIONS PAGE B6-8
--------------------------------	---------------------------	------------------------	-----------------------------------



SELECTION/DIMENSIONS



DOUBLE-INTERLOCK - Metric

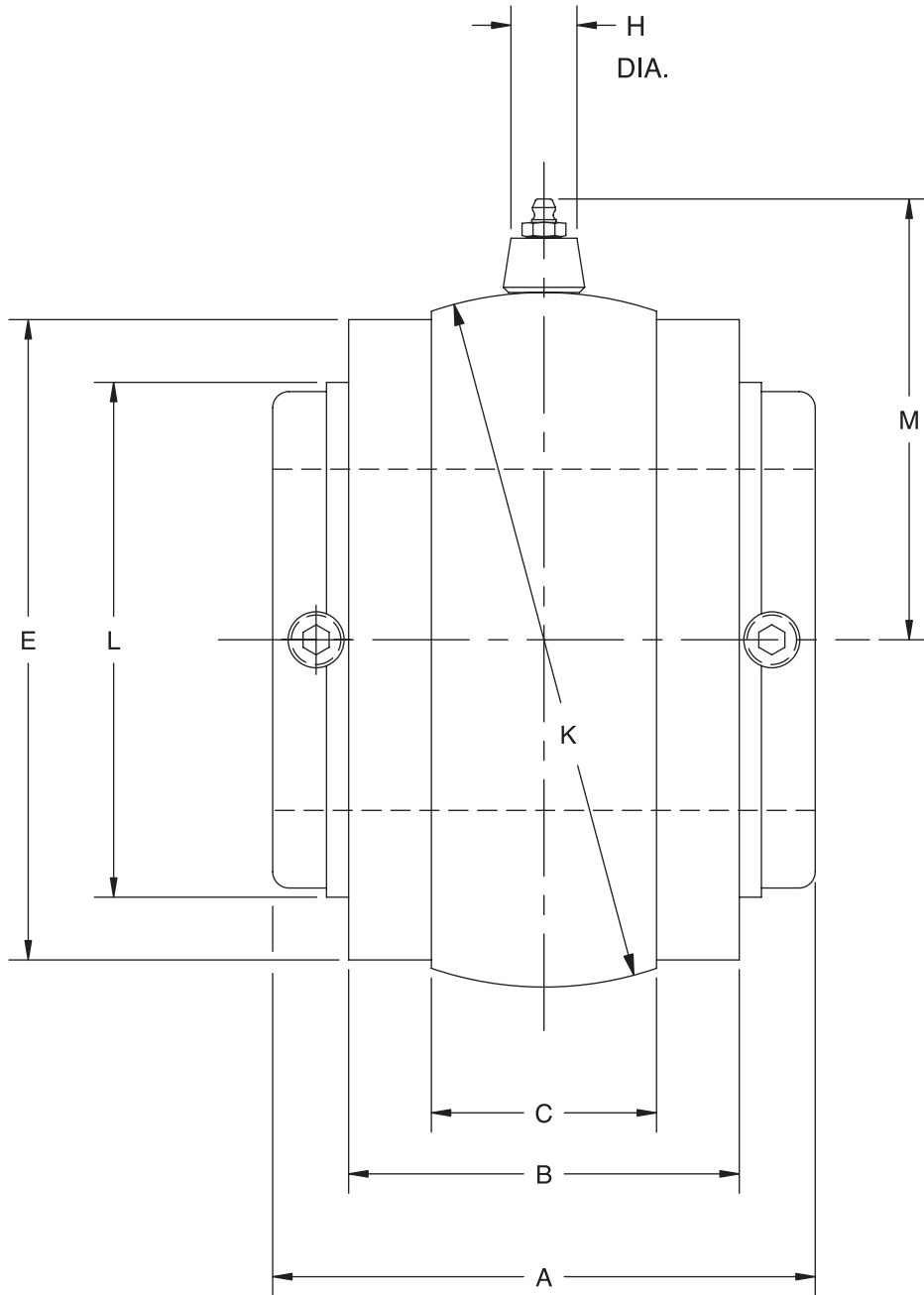
D-LOK

Type E Family

Specialty Tapered

S-2000

UNISPHERE II



FEATURES/BENEFITS PAGE B6-2	NOMENCLATURE PAGE B6-4	SELECTION PAGE B6-5	SELECTION/DIMENSIONS PAGE B6-8
--------------------------------	---------------------------	------------------------	-----------------------------------

SELECTION/DIMENSIONS



DOUBLE-INTERLOCK - Metric

METRIC DOUBLE INTERLOCK "S-1" UNITS - FRAY IRON			
SHAFT SIZE #	PART NUMBER	PART NAME	WEIGHT LBS (APPROX)
35mm	023700	S1U-DI-035M	5
40mm	023701	S1U-DI-040M	6
45mm	023702	S1U-DI-045M	8
50mm	023703	S1U-DI-050M	8
55mm	023704	S1U-DI-055M	10
60mm	023705	S1U-DI-060M	11
65mm	023706	S1U-DI-065M	10
70mm	023707	S1U-D9-070M	17
75mm	023708	S1U-DI-075M	17
80mm	023709	S1U-DI-080M	33
85mm	023710	S1U-DI-085M	32
90mm	023711	S1U-DI-090M	31
100mm	023712	S1U-DI-100M	42
110mm	023713	S1U-DI-110M	55
115mm	023714	S1U-DI-115M	71
125mm	023715	S1U-DI-125M	85

For housing references see the following pages: Pillow Blocks (B6-22 - B6-25) Flange Bearings (B6-26 - B6-29)

SHAFT SIZE (mm)	A	B	C	E		H DIA	K	L	M
				MACH SIZE	CAST SIZE				
35mm	3.00	2.063	1.156	3.250	3-5/16	0.688	3.625*	2.750	2.640
40mm	3.375	2.313	1.188	3.750	3-13/16	.0688	4.125*	3.188	2.890
45mm	3.500	2.875	1.500	4.125	4-3/16	0.688	4.562*	3.438	3.100
50mm									
55mm	3.750	2.563	1.563	4.500	4-5/8	0.688	5.000*	3.750	3.320
60mm	4.000	2.750	1.438	4.812	4-7/8	0.688	5.186*	4.063	3.410
65mm									
70mm	4.500	3.000	1.875	5.563	5-5/8	0.688	6.061*	4.719	3.850
75mm									
80mm	5.000	3.500	2.00	6.813	6-7/8	0.688	7.373#	5.531	4.510
85mm									
90mm									
100mm	6.250	4.500	2.375	7.438	7-1/2	0.313	7.997#	6.125	5.160
110mm	6.750	4.625	2.375	8.313	8-3/8	0.313	8.872#	6.438	5.600
115mm									
125mm	7.250	5.125	2.875	9.563	9-5/8	0.313	10.184#	7.438	6.260

ALL DIMENSIONS ARE SHOWN IN INCHES

* +.000 to -.001"
+/- .0005"

FEATURES/BENEFITS PAGE B6-2	NOMENCLATURE PAGE B6-4	SELECTION PAGE B6-5	SELECTION/DIMENSIONS PAGE B6-8
--------------------------------	---------------------------	------------------------	-----------------------------------

NOTES



D-LOK

Type E Family

Specialty Tapered

S-2000

UNISPHERE II

FEATURES/BENEFITS PAGE B5-2	NOMENCLATURE PAGE B5-4	SELECTION PAGE B5-5	SELECTION/DIMENSIONS PAGE B5-8
--------------------------------	---------------------------	------------------------	-----------------------------------