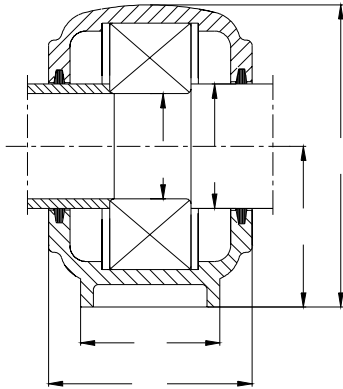




TABLE - 16

**SN 31 plummer block housings
for spherical roller bearings with ADAPTER SLEEVE
for plain cylindrical shafts
Shaft dia 100-140 mm**

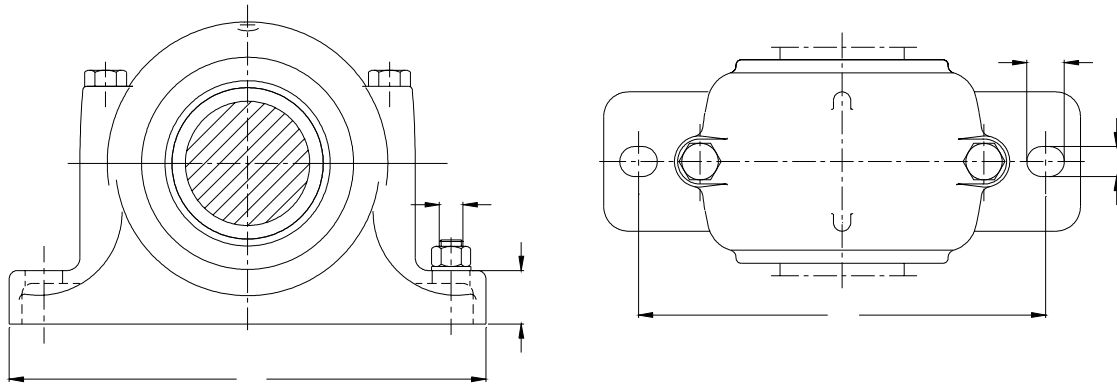


Material	C.I. FG 260 - IS 210, 1993
Mfg. Standard	IS 14347 - 1996 ; ISO 113 - 1994
Seal	Felt
Lubrication	Grease
Type	Horizontal Split Type
Application	Combined features of SNA and SNH type give this housing improved design and allow increased load carrying capacity
Options Available	a) 4 Foundation Bolt Hole Base. b) Additional V-ring seal c) Labyrinth seal d) End cover for closed end type e) Solid base for heavy load application. f) Material : Cast steel g) Drain plug

Shaft diameter d_a	Housing Dimensions												Approx Weight	Designation of Housing
	A	A ₁	A ₂	A ₃	H	H ₁	H ₂	J	L	N	N ₁	T		
mm	mm												kg	
100	150	110	100	75	215	112	40	320	390	36	28	24	20.0	SN 3122
110	160	120	110	80	239	125	45	350	420	36	28	24	24.5	SN 3124
115	170	120	110	80	260	140	45	350	420	36	28	24	30.5	SN 3126
125	175	130	115	85	286	150	45	380	460	36	28	24	40.7	SN 3128
135	205	150	145	100	305	150	50	420	500	48	35	30	50.0	SN 3130
140	220	160	150	105	346	160	60	450	530	48	35	30	71.5	SN 3132

SN31 Housings are also available for

- (a) Spherical roller bearing with adapter sleeve for stepped cylindrical shaft.
- (b) Spherical roller bearing with withdrawal sleeve for stepped cylindrical shaft.
- (c) Spherical roller bearings for stepped cylindrical shaft.
- (d) With labyrinth ring, abutment ring & spacer sleeve.



Shaft diameter d_a b_a	Appropriate bearing	adapter sleeve	locating ring No. & designation	Separate components		Grease quantity initial fill (recommended) kg	
				Felt strip	V-ring		
mm	–			–			
100	48	23122 CCK/W33	H 3122	1-FRB 10/180	FS 460	V-100 A	0.50
110	52	23124 CCK/W33	H 3124	1-FRB 10/200	FS 460	V-110 A	0.80
115	54	23126 CCK/W33	H 3126	1-FRB 10/210	FS 460	V-110 A	0.90
125	57	23128 CCK/W33	H 3128	1-FRB 10/225	FS 510	V-130 A	1.10
135	66	23130 CCK/W33	H 3130	1-FRB 10/250	FS 510	V-130 A	1.40
140	72	23132 CCK/W33	H 3132	1-FRB 10/270	FS 680	V-140 A	1.90

- Note: 1. Housing is supplied with 1/8" BSP grease nipple on top.
2. For located type, order locating ring ('FRB') separately.
3. Refer Table III and V for selecting alternative material and seal in case of higher load condition.